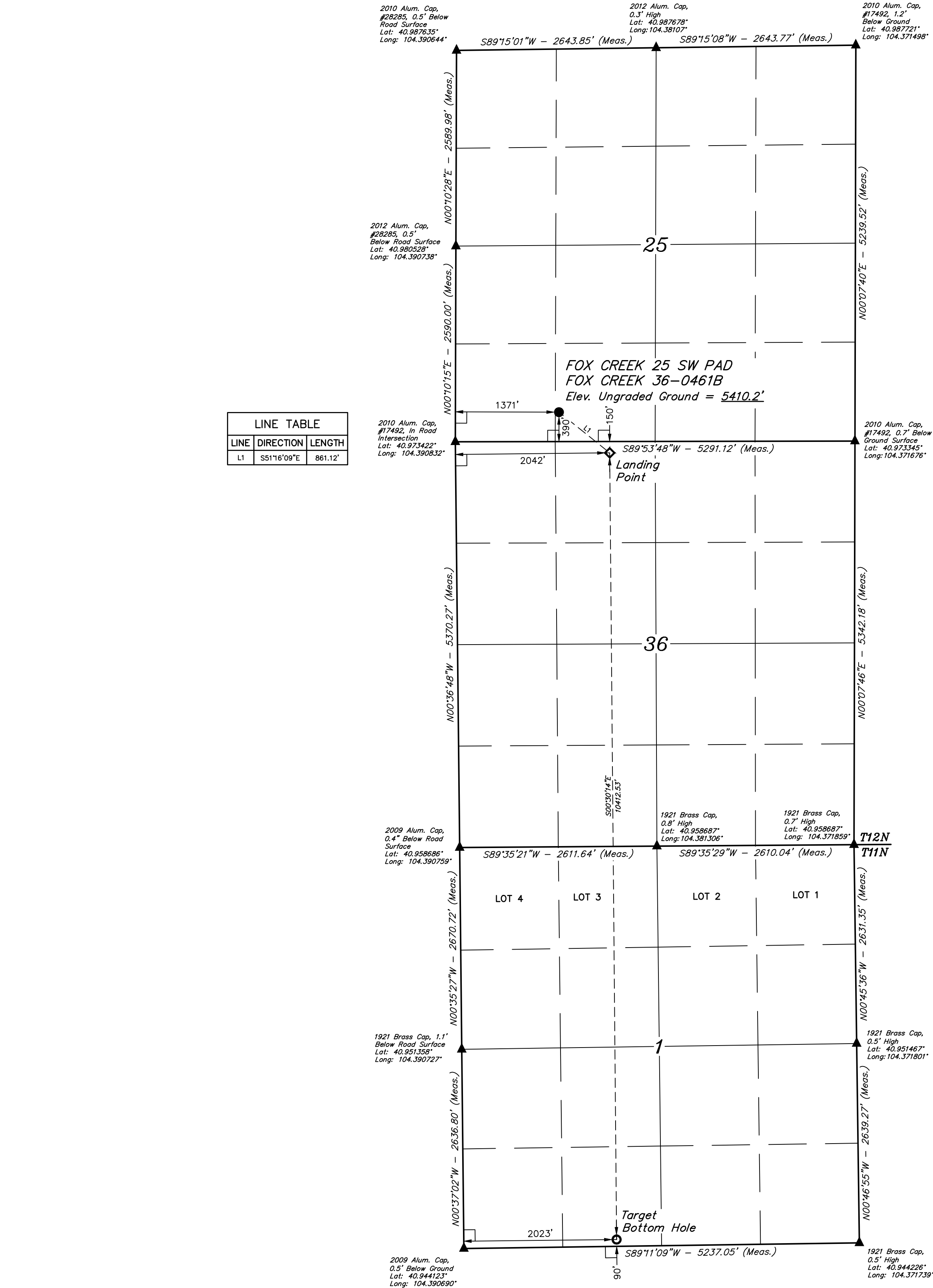



LEGEND:

- 90° SYMBOL
PROPOSED WELLHEAD.
LANDING POINT.
TARGET BOTTOM HOLE.
SECTION CORNERS LOCATED. (NAD 83)

T12N, R63W, 6th P.M.



PDOP = 1.9		
NAD 83 (SURFACE LOCATION)	NAD 83 (LANDING POINT)	NAD 83 (TARGET BOTTOM HOLE)
LATITUDE = 40°58'28.10" (40.974472°)	LATITUDE = 40°58'22.73" (40.972981°)	LATITUDE = 40°56'39.88" (40.944410°)
LONGITUDE = 104°23'09.08" (104.385855°)	LONGITUDE = 104°23'00.37" (104.383437°)	LONGITUDE = 104°23'00.14" (104.383371°)
NAD 27 (SURFACE LOCATION)	NAD 27 (LANDING POINT)	NAD 27 (TARGET BOTTOM HOLE)
LATITUDE = 40°58'28.16" (40.974489°)	LATITUDE = 40°58'22.79" (40.972998°)	LATITUDE = 40°56'39.94" (40.944427°)
LONGITUDE = 104°23'07.24" (104.385343°)	LONGITUDE = 104°22'58.53" (104.382925°)	LONGITUDE = 104°22'58.30" (104.382860°)
STATE PLANE NAD 83 (CO. NORTH)	STATE PLANE NAD 83 (CO. NORTH)	STATE PLANE NAD 83 (CO. NORTH)
N: 1599788.36' E: 3307663.18'	N: 1599253.44' E: 3308337.75'	N: 1588844.37' E: 3308486.97'
STATE PLANE NAD 27 (CO. NORTH)	STATE PLANE NAD 27 (CO. NORTH)	STATE PLANE NAD 27 (CO. NORTH)
N: 599785.94' E: 2307812.66'	N: 599251.03' E: 2308487.22'	N: 588842.15' E: 2308636.37'

TRANSVERSE MERCATOR PROJECTION WITH
A CENTRAL MERIDIAN OF W105°00'00".

BASIS OF ELEVATION
OPUS SOLUTION GENERATED NAVD 88

UELS, LLC
Corporate Office * 85 South 200 East
Vernal, UT 84078 * (435) 789-1017

UINTAH
ENGINEERING & LAND SURVEYING



CERTIFICATE OF RECORDING

THIS IS TO CERTIFY THAT THE ABOVE DESCRIBED SURVEY WAS MADE BY ME OR UNDER MY SUPERVISION AND THAT THE SAME ARE TRUE AND CORRECT TO THE BEST OF MY KNOWLEDGE AND BELIEF.

REGISTERED LAND SURVEYOR
REGISTRATION NO. 28285
STATE OF COLORADO

18

HIGHPOINT OPERATING CORPORATION
FOX CREEK 25 SW PAD
FOX CREEK 36-0461B
SE 1/4 SW 1/4, SECTION 25, T12N, R63W, 6th P.M.
WELD COUNTY, COLORADO

SURVEYED BY	RYAN WILLIAMS	08-16-18	SCALE
DRAWN BY	A.P.	08-23-18	1" = 1000'

WELL LOCATION PLAT