



PROJECT DETAILS: Weld County, CO NAD 83

Geodetic System: US State Plane 1983  
Datum: North American Datum 1983  
Ellipsoid: GRS 1980  
Zone: Colorado Northern Zone  
System Datum: Mean Sea Level  
Local North: True

Project: Weld County, CO NAD 83  
Site: Fox Creek 25 SW Pad  
Well: Fox Creek 25-6401B  
Wellbore: OH  
Design: Plan 1



Azimuths to True North  
Magnetic North: 8.28°

Magnetic Field  
Strength: 52808.0snT  
Dip Angle: 67.28°  
Date: 10/17/2018  
Model: HDGM



Plan: Plan 1 (Fox Creek 25-6401B/OH)

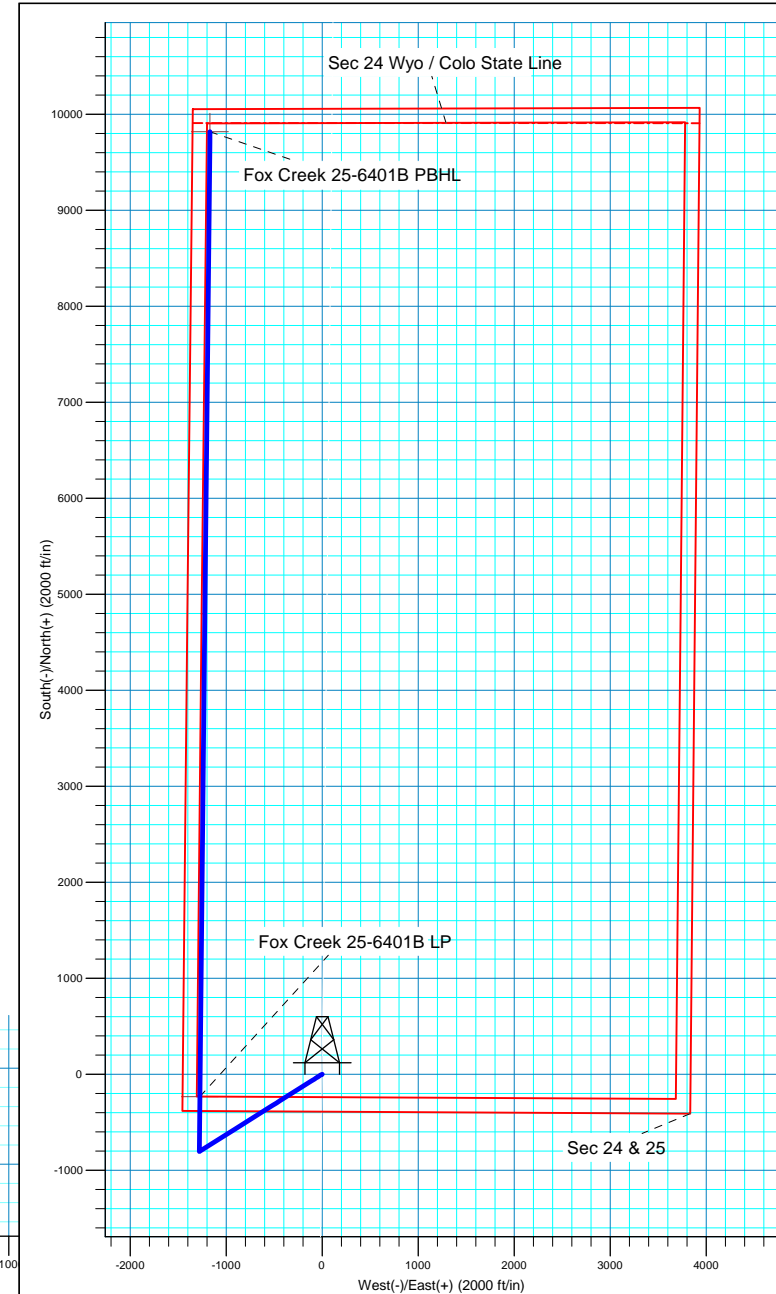
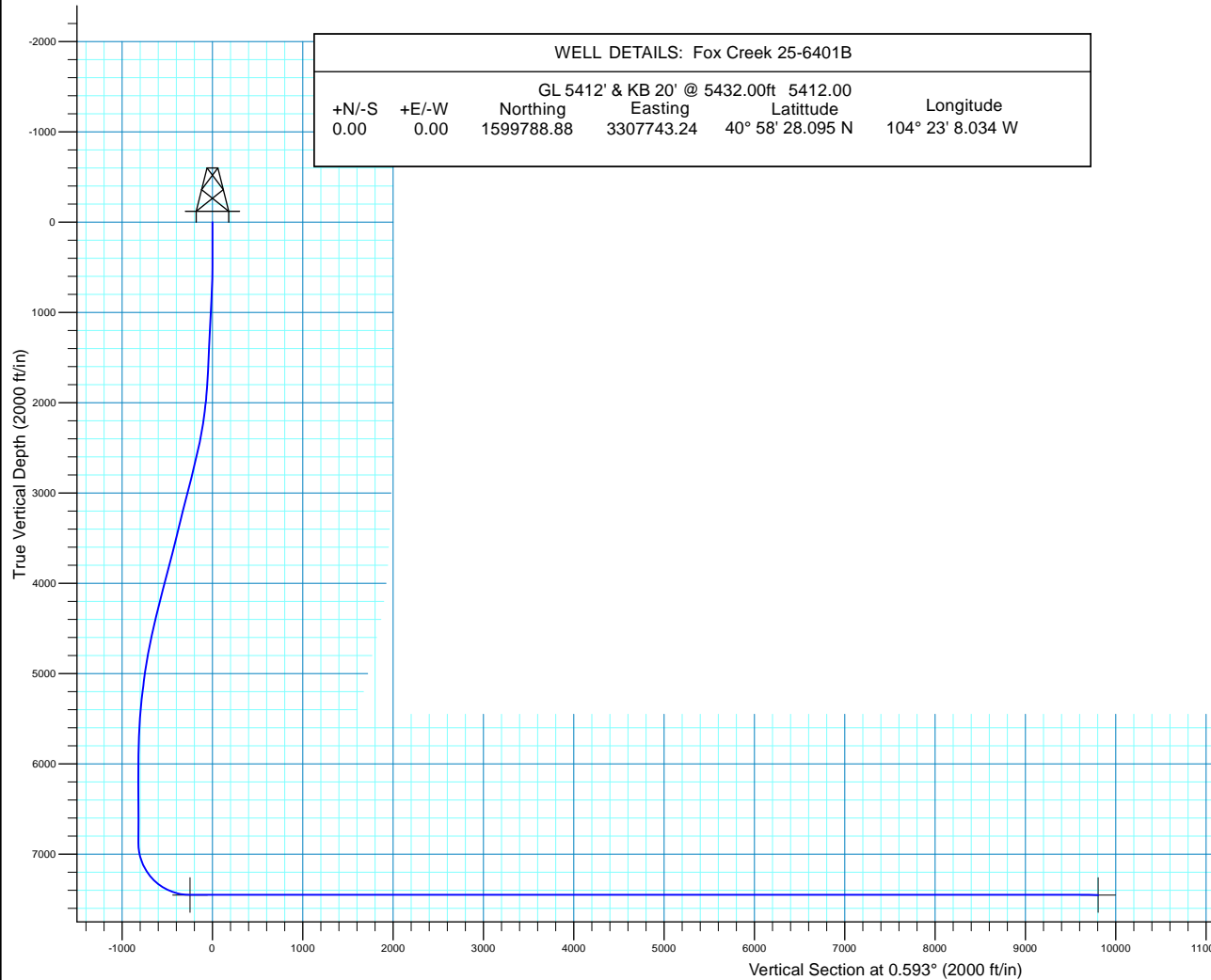
Created By: Seth Burstad

#### SECTION DETAILS

MD	Inc	Azi	TVD	+N/-S	+E/-W	Dleg	TFace	VSect
0.00	0.00	0.000	0.00	0.00	0.00	0.00	0.00	0.00
500.00	0.00	0.000	500.00	0.00	0.00	0.00	0.00	0.00
750.00	5.00	237.779	749.68	-5.81	-9.22	2.00	237.78	-5.91
1703.95	5.00	237.779	1700.00	-50.14	-79.56	0.00	0.00	-50.96
2703.98	25.00	237.779	2661.06	-187.45	-297.42	2.00	0.00	-190.52
4602.48	25.00	237.779	4381.68	-615.26	-976.22	0.00	0.00	-625.33
6269.19	0.00	0.000	5996.00	-806.08	-1279.00	1.50	180.00	-819.27
7152.23	0.00	0.000	6879.04	-806.08	-1279.00	0.00	0.00	-819.27
8052.23	90.00	0.593	7452.00	-233.15	-1273.07	10.00	0.59	-246.32
18103.02	90.00	0.593	7452.00	9817.10	-1169.03	0.00	0.00	9804.48

#### WELL DETAILS: Fox Creek 25-6401B

GL 5412' & KB 20' @ 5432.00ft 5412.00  
+N/-S +E/-W Northing Easting Latitude Longitude  
0.00 0.00 1599788.88 3307743.24 40° 58' 28.095 N 104° 23' 8.034 W





# HighPoint Resources

Weld County, CO NAD 83  
Fox Creek 25 SW Pad  
Fox Creek 25-6401B

OH

Plan: Plan 1

## Standard Planning Report

17 October, 2018



<b>Database:</b>	Casper District	<b>Local Co-ordinate Reference:</b>	Well Fox Creek 25-6401B
<b>Company:</b>	HighPoint Resources	<b>TVD Reference:</b>	GL 5412' & KB 20' @ 5432.00ft
<b>Project:</b>	Weld County, CO NAD 83	<b>MD Reference:</b>	GL 5412' & KB 20' @ 5432.00ft
<b>Site:</b>	Fox Creek 25 SW Pad	<b>North Reference:</b>	True
<b>Well:</b>	Fox Creek 25-6401B	<b>Survey Calculation Method:</b>	Minimum Curvature
<b>Wellbore:</b>	OH		
<b>Design:</b>	Plan 1		

<b>Project</b>	Weld County, CO NAD 83		
<b>Map System:</b>	US State Plane 1983	<b>System Datum:</b>	Mean Sea Level
<b>Geo Datum:</b>	North American Datum 1983		
<b>Map Zone:</b>	Colorado Northern Zone		

Site		Fox Creek 25 SW Pad, Site Center : Fox Creek 25-6104B			
Site Position:		Northing:	1,599,789.47 usft	Latitude:	40° 58' 28.092 N
From:	Lat/Long	Easting:	3,307,818.08 usft	Longitude:	104° 23' 7.058 W
Position Uncertainty:	0.00 ft	Slot Radius:	13.200 in	Grid Convergence:	0.72 °

Well	Fox Creek 25-6401B, 390' FSL 1451' FWL Sec 25 T12N R63W					
Well Position	+N/-S	0.35 ft	Northing:	1,599,788.87 usft	Latitude:	40° 58' 28.095 N
	+E/-W	-74.84 ft	Easting:	3,307,743.25 usft	Longitude:	104° 23' 8.034 W
Position Uncertainty		0.00 ft	Wellhead Elevation:	0.00 ft	Ground Level:	5,412.00 ft

<b>Wellbore</b>	OH				
<b>Magnetics</b>	<b>Model Name</b>	<b>Sample Date</b>	<b>Declination (°)</b>	<b>Dip Angle (°)</b>	<b>Field Strength (nT)</b>
	HDGM	10/17/2018	8.28	67.28	52,808

<b>Design</b>	Plan 1			
<b>Audit Notes:</b>				
<b>Version:</b>	<b>Phase:</b>	PLAN	<b>Tie On Depth:</b>	0.00
<b>Vertical Section:</b>	<b>Depth From (TVD) (ft)</b>	<b>+N/-S (ft)</b>	<b>+E/-W (ft)</b>	<b>Direction (°)</b>
	0.00	0.00	0.00	0.593

<b>Plan Sections</b>										
Measured Depth (ft)	Inclination (°)	Azimuth (°)	Vertical Depth (ft)	+N/-S (ft)	+E/-W (ft)	Dogleg Rate (°/100ft)	Build Rate (°/100ft)	Turn Rate (°/100ft)	TFO (°)	Target
0.00	0.00	0.000	0.00	0.00	0.00	0.00	0.00	0.00	0.00	
500.00	0.00	0.000	500.00	0.00	0.00	0.00	0.00	0.00	0.00	
750.00	5.00	237.779	749.68	-5.81	-9.22	2.00	2.00	0.00	237.78	
1,703.95	5.00	237.779	1,700.00	-50.14	-79.56	0.00	0.00	0.00	0.00	
2,703.98	25.00	237.779	2,661.06	-187.45	-297.42	2.00	2.00	0.00	0.00	
4,602.48	25.00	237.779	4,381.68	-615.26	-976.22	0.00	0.00	0.00	0.00	
6,269.19	0.00	0.000	5,996.00	-806.08	-1,279.00	1.50	-1.50	0.00	180.00	
7,152.23	0.00	0.000	6,879.04	-806.08	-1,279.00	0.00	0.00	0.00	0.00	
8,052.23	90.00	0.593	7,452.00	-233.15	-1,273.07	10.00	10.00	0.07	0.59	
18,103.02	90.00	0.593	7,452.00	9,817.10	-1,169.03	0.00	0.00	0.00	0.00	Fox Creek 25-6401B

<b>Database:</b>	Casper District	<b>Local Co-ordinate Reference:</b>	Well Fox Creek 25-6401B
<b>Company:</b>	HighPoint Resources	<b>TVD Reference:</b>	GL 5412' & KB 20' @ 5432.00ft
<b>Project:</b>	Weld County, CO NAD 83	<b>MD Reference:</b>	GL 5412' & KB 20' @ 5432.00ft
<b>Site:</b>	Fox Creek 25 SW Pad	<b>North Reference:</b>	True
<b>Well:</b>	Fox Creek 25-6401B	<b>Survey Calculation Method:</b>	Minimum Curvature
<b>Wellbore:</b>	OH		
<b>Design:</b>	Plan 1		

Planned Survey									
Measured Depth (ft)	Inclination (°)	Azimuth (°)	Vertical Depth (ft)	+N/-S (ft)	+E/-W (ft)	Vertical Section (ft)	Dogleg Rate (°/100ft)	Build Rate (°/100ft)	Turn Rate (°/100ft)
0.00	0.00	0.000	0.00	0.00	0.00	0.00	0.00	0.00	0.00
100.00	0.00	0.000	100.00	0.00	0.00	0.00	0.00	0.00	0.00
200.00	0.00	0.000	200.00	0.00	0.00	0.00	0.00	0.00	0.00
300.00	0.00	0.000	300.00	0.00	0.00	0.00	0.00	0.00	0.00
400.00	0.00	0.000	400.00	0.00	0.00	0.00	0.00	0.00	0.00
500.00	0.00	0.000	500.00	0.00	0.00	0.00	0.00	0.00	0.00
Start Build 2.00									
600.00	2.00	237.779	599.98	-0.93	-1.48	-0.95	2.00	2.00	0.00
700.00	4.00	237.779	699.84	-3.72	-5.90	-3.78	2.00	2.00	0.00
750.00	5.00	237.779	749.68	-5.81	-9.22	-5.91	2.00	2.00	0.00
Start 953.95 hold at 750.00 MD									
800.00	5.00	237.779	799.49	-8.14	-12.91	-8.27	0.00	0.00	0.00
900.00	5.00	237.779	899.11	-12.78	-20.28	-12.99	0.00	0.00	0.00
1,000.00	5.00	237.779	998.73	-17.43	-27.66	-17.72	0.00	0.00	0.00
1,100.00	5.00	237.779	1,098.35	-22.08	-35.03	-22.44	0.00	0.00	0.00
1,200.00	5.00	237.779	1,197.97	-26.72	-42.40	-27.16	0.00	0.00	0.00
1,300.00	5.00	237.779	1,297.59	-31.37	-49.78	-31.88	0.00	0.00	0.00
1,400.00	5.00	237.779	1,397.21	-36.02	-57.15	-36.61	0.00	0.00	0.00
1,500.00	5.00	237.779	1,496.83	-40.67	-64.52	-41.33	0.00	0.00	0.00
1,600.00	5.00	237.779	1,596.45	-45.31	-71.90	-46.05	0.00	0.00	0.00
1,700.00	5.00	237.779	1,696.07	-49.96	-79.27	-50.78	0.00	0.00	0.00
1,703.95	5.00	237.779	1,700.00	-50.14	-79.56	-50.96	0.00	0.00	0.00
Start DLS 2.00 TFO 0.00									
1,800.00	6.92	237.779	1,795.53	-55.46	-88.00	-56.37	2.00	2.00	0.00
1,900.00	8.92	237.779	1,894.57	-62.81	-99.66	-63.84	2.00	2.00	0.00
2,000.00	10.92	237.779	1,993.07	-71.99	-114.23	-73.17	2.00	2.00	0.00
2,100.00	12.92	237.779	2,090.91	-83.01	-131.71	-84.37	2.00	2.00	0.00
2,200.00	14.92	237.779	2,187.97	-95.83	-152.06	-97.40	2.00	2.00	0.00
2,300.00	16.92	237.779	2,284.12	-110.46	-175.26	-112.27	2.00	2.00	0.00
2,400.00	18.92	237.779	2,379.27	-126.86	-201.29	-128.94	2.00	2.00	0.00
2,500.00	20.92	237.779	2,473.28	-145.03	-230.12	-147.40	2.00	2.00	0.00
2,600.00	22.92	237.779	2,566.04	-164.93	-261.70	-167.63	2.00	2.00	0.00
2,700.00	24.92	237.779	2,657.45	-186.55	-296.00	-189.61	2.00	2.00	0.00
2,703.98	25.00	237.779	2,661.06	-187.45	-297.42	-190.52	2.00	2.00	0.00
Start 1898.50 hold at 2703.98 MD									
2,800.00	25.00	237.779	2,748.08	-209.09	-331.75	-212.51	0.00	0.00	0.00
2,900.00	25.00	237.779	2,838.71	-231.62	-367.51	-235.41	0.00	0.00	0.00
3,000.00	25.00	237.779	2,929.34	-254.15	-403.26	-258.31	0.00	0.00	0.00
3,100.00	25.00	237.779	3,019.97	-276.69	-439.02	-281.22	0.00	0.00	0.00
3,200.00	25.00	237.779	3,110.60	-299.22	-474.77	-304.12	0.00	0.00	0.00
3,300.00	25.00	237.779	3,201.23	-321.76	-510.53	-327.02	0.00	0.00	0.00
3,400.00	25.00	237.779	3,291.86	-344.29	-546.28	-349.92	0.00	0.00	0.00
3,500.00	25.00	237.779	3,382.49	-366.82	-582.03	-372.83	0.00	0.00	0.00
3,600.00	25.00	237.779	3,473.12	-389.36	-617.79	-395.73	0.00	0.00	0.00
3,700.00	25.00	237.779	3,563.75	-411.89	-653.54	-418.63	0.00	0.00	0.00
3,800.00	25.00	237.779	3,654.39	-434.42	-689.30	-441.54	0.00	0.00	0.00
3,900.00	25.00	237.779	3,745.02	-456.96	-725.05	-464.44	0.00	0.00	0.00
4,000.00	25.00	237.779	3,835.65	-479.49	-760.81	-487.34	0.00	0.00	0.00
4,100.00	25.00	237.779	3,926.28	-502.03	-796.56	-510.24	0.00	0.00	0.00
4,200.00	25.00	237.779	4,016.91	-524.56	-832.31	-533.15	0.00	0.00	0.00
4,300.00	25.00	237.779	4,107.54	-547.09	-868.07	-556.05	0.00	0.00	0.00
4,400.00	25.00	237.779	4,198.17	-569.63	-903.82	-578.95	0.00	0.00	0.00
4,500.00	25.00	237.779	4,288.80	-592.16	-939.58	-601.85	0.00	0.00	0.00
4,600.00	25.00	237.779	4,379.43	-614.70	-975.33	-624.76	0.00	0.00	0.00

<b>Database:</b>	Casper District	<b>Local Co-ordinate Reference:</b>	Well Fox Creek 25-6401B
<b>Company:</b>	HighPoint Resources	<b>TVD Reference:</b>	GL 5412' & KB 20' @ 5432.00ft
<b>Project:</b>	Weld County, CO NAD 83	<b>MD Reference:</b>	GL 5412' & KB 20' @ 5432.00ft
<b>Site:</b>	Fox Creek 25 SW Pad	<b>North Reference:</b>	True
<b>Well:</b>	Fox Creek 25-6401B	<b>Survey Calculation Method:</b>	Minimum Curvature
<b>Wellbore:</b>	OH		
<b>Design:</b>	Plan 1		

Planned Survey									
Measured Depth (ft)	Inclination (°)	Azimuth (°)	Vertical Depth (ft)	+N/-S (ft)	+E/-W (ft)	Vertical Section (ft)	Dogleg Rate (°/100ft)	Build Rate (°/100ft)	Turn Rate (°/100ft)
4,602.48	25.00	237.779	4,381.68	-615.26	-976.22	-625.33	0.00	0.00	0.00
<b>Start Drop -1.50</b>									
4,700.00	23.54	237.779	4,470.57	-636.63	-1,010.13	-647.05	1.50	-1.50	0.00
4,800.00	22.04	237.779	4,562.77	-657.28	-1,042.89	-668.03	1.50	-1.50	0.00
4,900.00	20.54	237.779	4,655.94	-676.63	-1,073.61	-687.71	1.50	-1.50	0.00
5,000.00	19.04	237.779	4,750.03	-694.68	-1,102.25	-706.05	1.50	-1.50	0.00
5,100.00	17.54	237.779	4,844.98	-711.41	-1,128.79	-723.06	1.50	-1.50	0.00
5,200.00	16.04	237.779	4,940.71	-726.81	-1,153.23	-738.71	1.50	-1.50	0.00
5,300.00	14.54	237.779	5,037.17	-740.87	-1,175.53	-753.00	1.50	-1.50	0.00
5,400.00	13.04	237.779	5,134.29	-753.58	-1,195.70	-765.91	1.50	-1.50	0.00
5,500.00	11.54	237.779	5,232.00	-764.93	-1,213.70	-777.45	1.50	-1.50	0.00
5,600.00	10.04	237.779	5,330.23	-774.90	-1,229.53	-787.59	1.50	-1.50	0.00
5,700.00	8.54	237.779	5,428.91	-783.51	-1,243.19	-796.33	1.50	-1.50	0.00
5,800.00	7.04	237.779	5,527.99	-790.73	-1,254.65	-803.68	1.50	-1.50	0.00
5,900.00	5.54	237.779	5,627.38	-796.57	-1,263.92	-809.61	1.50	-1.50	0.00
6,000.00	4.04	237.779	5,727.03	-801.02	-1,270.98	-814.14	1.50	-1.50	0.00
6,100.00	2.54	237.779	5,826.86	-804.08	-1,275.83	-817.24	1.50	-1.50	0.00
6,200.00	1.04	237.779	5,926.81	-805.75	-1,278.47	-818.93	1.50	-1.50	0.00
6,269.19	0.00	0.000	5,996.00	-806.08	-1,279.00	-819.27	1.50	-1.50	0.00
<b>Start 883.04 hold at 6269.19 MD</b>									
6,300.00	0.00	0.000	6,026.81	-806.08	-1,279.00	-819.27	0.00	0.00	0.00
6,400.00	0.00	0.000	6,126.81	-806.08	-1,279.00	-819.27	0.00	0.00	0.00
6,500.00	0.00	0.000	6,226.81	-806.08	-1,279.00	-819.27	0.00	0.00	0.00
6,600.00	0.00	0.000	6,326.81	-806.08	-1,279.00	-819.27	0.00	0.00	0.00
6,700.00	0.00	0.000	6,426.81	-806.08	-1,279.00	-819.27	0.00	0.00	0.00
6,800.00	0.00	0.000	6,526.81	-806.08	-1,279.00	-819.27	0.00	0.00	0.00
6,900.00	0.00	0.000	6,626.81	-806.08	-1,279.00	-819.27	0.00	0.00	0.00
7,000.00	0.00	0.000	6,726.81	-806.08	-1,279.00	-819.27	0.00	0.00	0.00
7,100.00	0.00	0.000	6,826.81	-806.08	-1,279.00	-819.27	0.00	0.00	0.00
7,152.23	0.00	0.000	6,879.04	-806.08	-1,279.00	-819.27	0.00	0.00	0.00
<b>Start DLS 10.00 TFO 0.59</b>									
7,200.00	4.78	0.593	6,926.75	-804.09	-1,278.98	-817.28	10.00	10.00	0.00
7,300.00	14.78	0.593	7,025.17	-787.13	-1,278.80	-800.32	10.00	10.00	0.00
7,400.00	24.78	0.593	7,119.16	-753.34	-1,278.45	-766.53	10.00	10.00	0.00
7,500.00	34.78	0.593	7,205.84	-703.74	-1,277.94	-716.93	10.00	10.00	0.00
7,600.00	44.78	0.593	7,282.60	-639.85	-1,277.28	-653.03	10.00	10.00	0.00
7,700.00	54.78	0.593	7,347.10	-563.60	-1,276.49	-576.78	10.00	10.00	0.00
7,800.00	64.78	0.593	7,397.37	-477.30	-1,275.60	-490.48	10.00	10.00	0.00
7,900.00	74.78	0.593	7,431.89	-383.59	-1,274.63	-396.76	10.00	10.00	0.00
8,000.00	84.78	0.593	7,449.62	-285.31	-1,273.61	-298.48	10.00	10.00	0.00
8,052.23	90.00	0.593	7,452.00	-233.15	-1,273.07	-246.32	10.00	10.00	0.00
<b>Start 10050.78 hold at 8052.23 MD</b>									
8,100.00	90.00	0.593	7,452.00	-185.39	-1,272.57	-198.55	0.00	0.00	0.00
8,200.00	90.00	0.593	7,452.00	-85.39	-1,271.54	-98.55	0.00	0.00	0.00
8,300.00	90.00	0.593	7,452.00	14.60	-1,270.50	1.45	0.00	0.00	0.00
8,400.00	90.00	0.593	7,452.00	114.60	-1,269.47	101.45	0.00	0.00	0.00
8,500.00	90.00	0.593	7,452.00	214.59	-1,268.43	201.45	0.00	0.00	0.00
8,600.00	90.00	0.593	7,452.00	314.58	-1,267.40	301.45	0.00	0.00	0.00
8,700.00	90.00	0.593	7,452.00	414.58	-1,266.36	401.45	0.00	0.00	0.00
8,800.00	90.00	0.593	7,452.00	514.57	-1,265.33	501.45	0.00	0.00	0.00
8,900.00	90.00	0.593	7,452.00	614.57	-1,264.29	601.45	0.00	0.00	0.00
9,000.00	90.00	0.593	7,452.00	714.56	-1,263.26	701.45	0.00	0.00	0.00
9,100.00	90.00	0.593	7,452.00	814.56	-1,262.22	801.45	0.00	0.00	0.00

<b>Database:</b>	Casper District	<b>Local Co-ordinate Reference:</b>	Well Fox Creek 25-6401B
<b>Company:</b>	HighPoint Resources	<b>TVD Reference:</b>	GL 5412' & KB 20' @ 5432.00ft
<b>Project:</b>	Weld County, CO NAD 83	<b>MD Reference:</b>	GL 5412' & KB 20' @ 5432.00ft
<b>Site:</b>	Fox Creek 25 SW Pad	<b>North Reference:</b>	True
<b>Well:</b>	Fox Creek 25-6401B	<b>Survey Calculation Method:</b>	Minimum Curvature
<b>Wellbore:</b>	OH		
<b>Design:</b>	Plan 1		

Planned Survey									
Measured Depth (ft)	Inclination (°)	Azimuth (°)	Vertical Depth (ft)	+N/-S (ft)	+E/-W (ft)	Vertical Section (ft)	Dogleg Rate (°/100ft)	Build Rate (°/100ft)	Turn Rate (°/100ft)
9,200.00	90.00	0.593	7,452.00	914.55	-1,261.19	901.45	0.00	0.00	0.00
9,300.00	90.00	0.593	7,452.00	1,014.55	-1,260.15	1,001.45	0.00	0.00	0.00
9,400.00	90.00	0.593	7,452.00	1,114.54	-1,259.12	1,101.45	0.00	0.00	0.00
9,500.00	90.00	0.593	7,452.00	1,214.54	-1,258.08	1,201.45	0.00	0.00	0.00
9,600.00	90.00	0.593	7,452.00	1,314.53	-1,257.05	1,301.45	0.00	0.00	0.00
9,700.00	90.00	0.593	7,452.00	1,414.53	-1,256.01	1,401.45	0.00	0.00	0.00
9,800.00	90.00	0.593	7,452.00	1,514.52	-1,254.98	1,501.45	0.00	0.00	0.00
9,900.00	90.00	0.593	7,452.00	1,614.52	-1,253.94	1,601.45	0.00	0.00	0.00
10,000.00	90.00	0.593	7,452.00	1,714.51	-1,252.91	1,701.45	0.00	0.00	0.00
10,100.00	90.00	0.593	7,452.00	1,814.50	-1,251.87	1,801.45	0.00	0.00	0.00
10,200.00	90.00	0.593	7,452.00	1,914.50	-1,250.84	1,901.45	0.00	0.00	0.00
10,300.00	90.00	0.593	7,452.00	2,014.49	-1,249.80	2,001.45	0.00	0.00	0.00
10,400.00	90.00	0.593	7,452.00	2,114.49	-1,248.77	2,101.45	0.00	0.00	0.00
10,500.00	90.00	0.593	7,452.00	2,214.48	-1,247.73	2,201.45	0.00	0.00	0.00
10,600.00	90.00	0.593	7,452.00	2,314.48	-1,246.70	2,301.45	0.00	0.00	0.00
10,700.00	90.00	0.593	7,452.00	2,414.47	-1,245.66	2,401.45	0.00	0.00	0.00
10,800.00	90.00	0.593	7,452.00	2,514.47	-1,244.63	2,501.45	0.00	0.00	0.00
10,900.00	90.00	0.593	7,452.00	2,614.46	-1,243.59	2,601.45	0.00	0.00	0.00
11,000.00	90.00	0.593	7,452.00	2,714.46	-1,242.56	2,701.45	0.00	0.00	0.00
11,100.00	90.00	0.593	7,452.00	2,814.45	-1,241.52	2,801.45	0.00	0.00	0.00
11,200.00	90.00	0.593	7,452.00	2,914.45	-1,240.49	2,901.45	0.00	0.00	0.00
11,300.00	90.00	0.593	7,452.00	3,014.44	-1,239.45	3,001.45	0.00	0.00	0.00
11,400.00	90.00	0.593	7,452.00	3,114.43	-1,238.41	3,101.45	0.00	0.00	0.00
11,500.00	90.00	0.593	7,452.00	3,214.43	-1,237.38	3,201.45	0.00	0.00	0.00
11,600.00	90.00	0.593	7,452.00	3,314.42	-1,236.34	3,301.45	0.00	0.00	0.00
11,700.00	90.00	0.593	7,452.00	3,414.42	-1,235.31	3,401.45	0.00	0.00	0.00
11,800.00	90.00	0.593	7,452.00	3,514.41	-1,234.27	3,501.45	0.00	0.00	0.00
11,900.00	90.00	0.593	7,452.00	3,614.41	-1,233.24	3,601.45	0.00	0.00	0.00
12,000.00	90.00	0.593	7,452.00	3,714.40	-1,232.20	3,701.45	0.00	0.00	0.00
12,100.00	90.00	0.593	7,452.00	3,814.40	-1,231.17	3,801.45	0.00	0.00	0.00
12,200.00	90.00	0.593	7,452.00	3,914.39	-1,230.13	3,901.45	0.00	0.00	0.00
12,300.00	90.00	0.593	7,452.00	4,014.39	-1,229.10	4,001.45	0.00	0.00	0.00
12,400.00	90.00	0.593	7,452.00	4,114.38	-1,228.06	4,101.45	0.00	0.00	0.00
12,500.00	90.00	0.593	7,452.00	4,214.38	-1,227.03	4,201.45	0.00	0.00	0.00
12,600.00	90.00	0.593	7,452.00	4,314.37	-1,225.99	4,301.45	0.00	0.00	0.00
12,700.00	90.00	0.593	7,452.00	4,414.37	-1,224.96	4,401.45	0.00	0.00	0.00
12,800.00	90.00	0.593	7,452.00	4,514.36	-1,223.92	4,501.45	0.00	0.00	0.00
12,900.00	90.00	0.593	7,452.00	4,614.35	-1,222.89	4,601.45	0.00	0.00	0.00
13,000.00	90.00	0.593	7,452.00	4,714.35	-1,221.85	4,701.45	0.00	0.00	0.00
13,100.00	90.00	0.593	7,452.00	4,814.34	-1,220.82	4,801.45	0.00	0.00	0.00
13,200.00	90.00	0.593	7,452.00	4,914.34	-1,219.78	4,901.45	0.00	0.00	0.00
13,300.00	90.00	0.593	7,452.00	5,014.33	-1,218.75	5,001.45	0.00	0.00	0.00
13,400.00	90.00	0.593	7,452.00	5,114.33	-1,217.71	5,101.45	0.00	0.00	0.00
13,500.00	90.00	0.593	7,452.00	5,214.32	-1,216.68	5,201.45	0.00	0.00	0.00
13,600.00	90.00	0.593	7,452.00	5,314.32	-1,215.64	5,301.45	0.00	0.00	0.00
13,700.00	90.00	0.593	7,452.00	5,414.31	-1,214.61	5,401.45	0.00	0.00	0.00
13,800.00	90.00	0.593	7,452.00	5,514.31	-1,213.57	5,501.45	0.00	0.00	0.00
13,900.00	90.00	0.593	7,452.00	5,614.30	-1,212.54	5,601.45	0.00	0.00	0.00
14,000.00	90.00	0.593	7,452.00	5,714.30	-1,211.50	5,701.45	0.00	0.00	0.00
14,100.00	90.00	0.593	7,452.00	5,814.29	-1,210.47	5,801.45	0.00	0.00	0.00
14,200.00	90.00	0.593	7,452.00	5,914.28	-1,209.43	5,901.45	0.00	0.00	0.00
14,300.00	90.00	0.593	7,452.00	6,014.28	-1,208.40	6,001.45	0.00	0.00	0.00
14,400.00	90.00	0.593	7,452.00	6,114.27	-1,207.36	6,101.45	0.00	0.00	0.00
14,500.00	90.00	0.593	7,452.00	6,214.27	-1,206.33	6,201.45	0.00	0.00	0.00

<b>Database:</b>	Casper District	<b>Local Co-ordinate Reference:</b>	Well Fox Creek 25-6401B
<b>Company:</b>	HighPoint Resources	<b>TVD Reference:</b>	GL 5412' & KB 20' @ 5432.00ft
<b>Project:</b>	Weld County, CO NAD 83	<b>MD Reference:</b>	GL 5412' & KB 20' @ 5432.00ft
<b>Site:</b>	Fox Creek 25 SW Pad	<b>North Reference:</b>	True
<b>Well:</b>	Fox Creek 25-6401B	<b>Survey Calculation Method:</b>	Minimum Curvature
<b>Wellbore:</b>	OH		
<b>Design:</b>	Plan 1		

Planned Survey									
Measured Depth (ft)	Inclination (°)	Azimuth (°)	Vertical Depth (ft)	+N/-S (ft)	+E/-W (ft)	Vertical Section (ft)	Dogleg Rate (°/100ft)	Build Rate (°/100ft)	Turn Rate (°/100ft)
14,600.00	90.00	0.593	7,452.00	6,314.26	-1,205.29	6,301.45	0.00	0.00	0.00
14,700.00	90.00	0.593	7,452.00	6,414.26	-1,204.26	6,401.45	0.00	0.00	0.00
14,800.00	90.00	0.593	7,452.00	6,514.25	-1,203.22	6,501.45	0.00	0.00	0.00
14,900.00	90.00	0.593	7,452.00	6,614.25	-1,202.19	6,601.45	0.00	0.00	0.00
15,000.00	90.00	0.593	7,452.00	6,714.24	-1,201.15	6,701.45	0.00	0.00	0.00
15,100.00	90.00	0.593	7,452.00	6,814.24	-1,200.11	6,801.45	0.00	0.00	0.00
15,200.00	90.00	0.593	7,452.00	6,914.23	-1,199.08	6,901.45	0.00	0.00	0.00
15,300.00	90.00	0.593	7,452.00	7,014.23	-1,198.04	7,001.45	0.00	0.00	0.00
15,400.00	90.00	0.593	7,452.00	7,114.22	-1,197.01	7,101.45	0.00	0.00	0.00
15,500.00	90.00	0.593	7,452.00	7,214.22	-1,195.97	7,201.45	0.00	0.00	0.00
15,600.00	90.00	0.593	7,452.00	7,314.21	-1,194.94	7,301.45	0.00	0.00	0.00
15,700.00	90.00	0.593	7,452.00	7,414.20	-1,193.90	7,401.45	0.00	0.00	0.00
15,800.00	90.00	0.593	7,452.00	7,514.20	-1,192.87	7,501.45	0.00	0.00	0.00
15,900.00	90.00	0.593	7,452.00	7,614.19	-1,191.83	7,601.45	0.00	0.00	0.00
16,000.00	90.00	0.593	7,452.00	7,714.19	-1,190.80	7,701.45	0.00	0.00	0.00
16,100.00	90.00	0.593	7,452.00	7,814.18	-1,189.76	7,801.45	0.00	0.00	0.00
16,200.00	90.00	0.593	7,452.00	7,914.18	-1,188.73	7,901.45	0.00	0.00	0.00
16,300.00	90.00	0.593	7,452.00	8,014.17	-1,187.69	8,001.45	0.00	0.00	0.00
16,400.00	90.00	0.593	7,452.00	8,114.17	-1,186.66	8,101.45	0.00	0.00	0.00
16,500.00	90.00	0.593	7,452.00	8,214.16	-1,185.62	8,201.45	0.00	0.00	0.00
16,600.00	90.00	0.593	7,452.00	8,314.16	-1,184.59	8,301.45	0.00	0.00	0.00
16,700.00	90.00	0.593	7,452.00	8,414.15	-1,183.55	8,401.45	0.00	0.00	0.00
16,800.00	90.00	0.593	7,452.00	8,514.15	-1,182.52	8,501.45	0.00	0.00	0.00
16,900.00	90.00	0.593	7,452.00	8,614.14	-1,181.48	8,601.45	0.00	0.00	0.00
17,000.00	90.00	0.593	7,452.00	8,714.13	-1,180.45	8,701.45	0.00	0.00	0.00
17,100.00	90.00	0.593	7,452.00	8,814.13	-1,179.41	8,801.45	0.00	0.00	0.00
17,200.00	90.00	0.593	7,452.00	8,914.12	-1,178.38	8,901.45	0.00	0.00	0.00
17,300.00	90.00	0.593	7,452.00	9,014.12	-1,177.34	9,001.45	0.00	0.00	0.00
17,400.00	90.00	0.593	7,452.00	9,114.11	-1,176.31	9,101.45	0.00	0.00	0.00
17,500.00	90.00	0.593	7,452.00	9,214.11	-1,175.27	9,201.45	0.00	0.00	0.00
17,600.00	90.00	0.593	7,452.00	9,314.10	-1,174.24	9,301.45	0.00	0.00	0.00
17,700.00	90.00	0.593	7,452.00	9,414.10	-1,173.20	9,401.45	0.00	0.00	0.00
17,800.00	90.00	0.593	7,452.00	9,514.09	-1,172.17	9,501.45	0.00	0.00	0.00
17,900.00	90.00	0.593	7,452.00	9,614.09	-1,171.13	9,601.45	0.00	0.00	0.00
18,000.00	90.00	0.593	7,452.00	9,714.08	-1,170.10	9,701.45	0.00	0.00	0.00
18,100.00	90.00	0.593	7,452.00	9,814.08	-1,169.06	9,801.45	0.00	0.00	0.00
18,103.02	90.00	0.593	7,452.00	9,817.09	-1,169.03	9,804.47	0.00	0.00	0.00
TD at 18103.02									

Design Targets									
Target Name	Dip Angle (°)	Dip Dir. (°)	TVD (ft)	+N/-S (ft)	+E/-W (ft)	Northing (usft)	Easting (usft)	Latitude	Longitude
- hit/miss target									
- Shape									
Fox Creek 25-6401B LP - plan hits target center - Point	0.00	0.000	7,452.00	-233.14	-1,273.07	1,599,539.75	3,306,473.21	40° 58' 25.792 N	104° 23' 24.630 W
Fox Creek 25-6401B PB - plan hits target center - Point	0.00	0.000	7,452.00	9,817.10	-1,169.03	1,609,590.48	3,306,450.94	41° 0' 5.090 N	104° 23' 23.280 W

<b>Database:</b>	Casper District	<b>Local Co-ordinate Reference:</b>	Well Fox Creek 25-6401B
<b>Company:</b>	HighPoint Resources	<b>TVD Reference:</b>	GL 5412' & KB 20' @ 5432.00ft
<b>Project:</b>	Weld County, CO NAD 83	<b>MD Reference:</b>	GL 5412' & KB 20' @ 5432.00ft
<b>Site:</b>	Fox Creek 25 SW Pad	<b>North Reference:</b>	True
<b>Well:</b>	Fox Creek 25-6401B	<b>Survey Calculation Method:</b>	Minimum Curvature
<b>Wellbore:</b>	OH		
<b>Design:</b>	Plan 1		

Plan Annotations				
Measured Depth (ft)	Vertical Depth (ft)	Local Coordinates		Comment
		+N/-S (ft)	+E/-W (ft)	
500.00	500.00	0.00	0.00	Start Build 2.00
750.00	749.68	-5.81	-9.22	Start 953.95 hold at 750.00 MD
1,703.95	1,700.00	-50.14	-79.56	Start DLS 2.00 TFO 0.00
2,703.98	2,661.06	-187.45	-297.42	Start 1898.50 hold at 2703.98 MD
4,602.48	4,381.68	-615.26	-976.22	Start Drop -1.50
6,269.19	5,996.00	-806.08	-1,279.00	Start 883.04 hold at 6269.19 MD
7,152.23	6,879.04	-806.08	-1,279.00	Start DLS 10.00 TFO 0.59
8,052.23	7,452.00	-233.15	-1,273.07	Start 10050.78 hold at 8052.23 MD
18,103.02	7,452.00	9,817.09	-1,169.03	TD at 18103.02