



PROJECT DETAILS: Weld County, CO NAD 83

Geodetic System: US State Plane 1983
Datum: North American Datum 1983
Ellipsoid: GRS 1980
Zone: Colorado Northern Zone
System Datum: Mean Sea Level
Local North: True

Project: Weld County, CO NAD 83
Site: Fox Creek 25 SW Pad
Well: Fox Creek 25-6302B
Wellbore: OH
Design: Plan 1



Azimuths to True North
Magnetic North: 8.28°

Magnetic Field
Strength: 52808.6snT
Dip Angle: 67.28°
Date: 10/17/2018
Model: HDGM



Plan: Plan 1 (Fox Creek 25-6302B/OH)

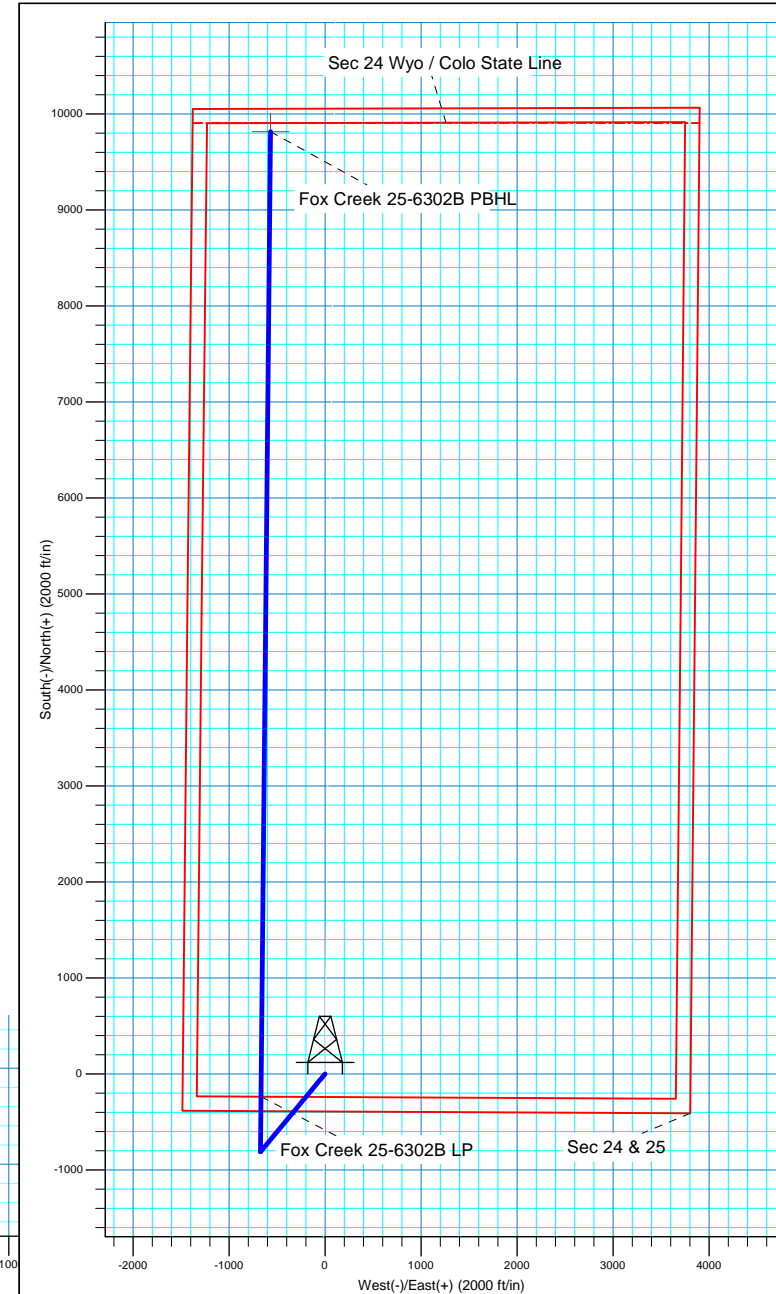
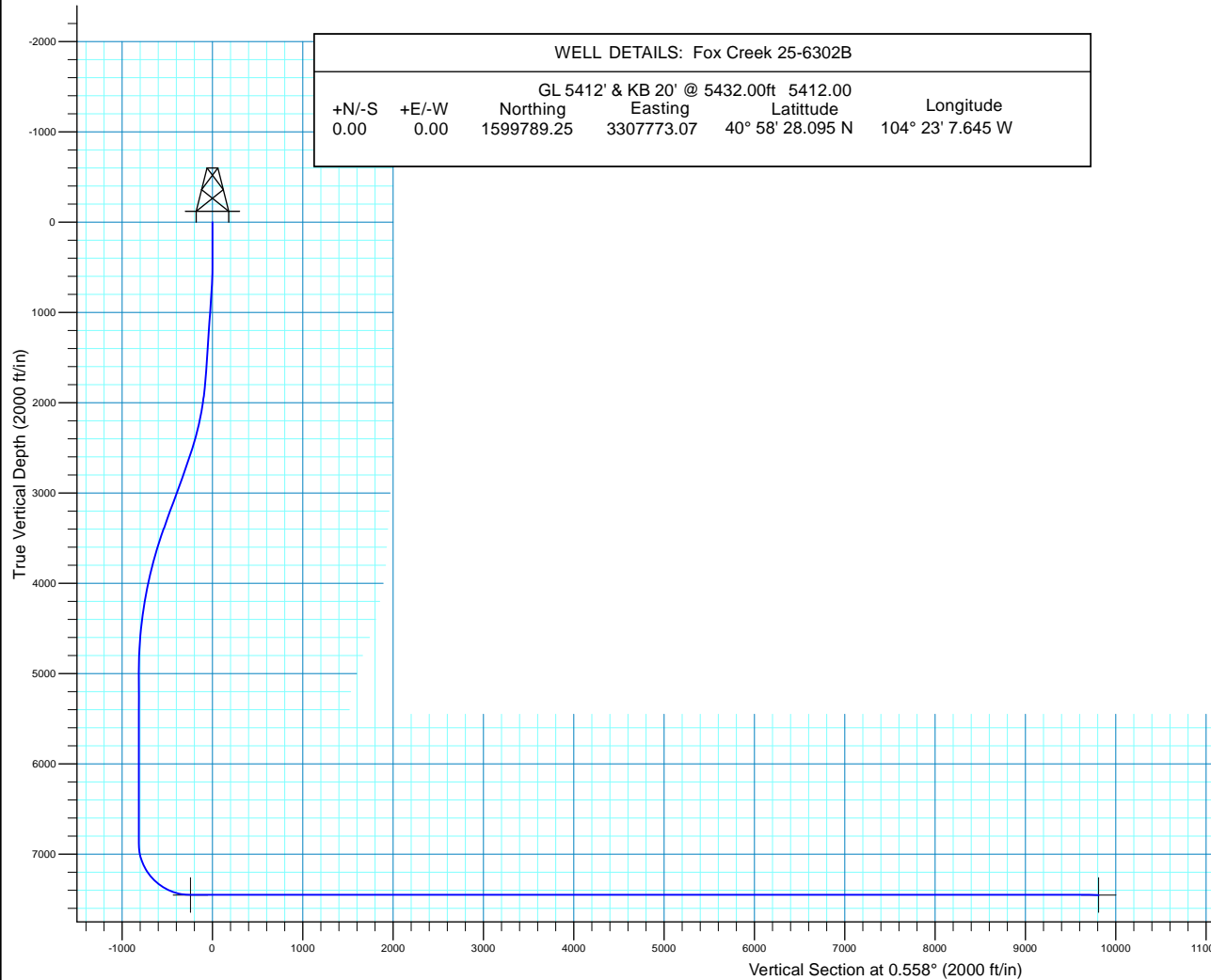
Created By: Seth Burstad

SECTION DETAILS

MD	Inc	Azi	TVD	+N/-S	+E/-W	Dleg	TFace	VSect
0.00	0.00	0.000	0.00	0.00	0.00	0.00	0.00	0.00
500.00	0.00	0.000	500.00	0.00	0.00	0.00	0.00	0.00
750.00	5.00	219.676	749.68	-8.39	-6.96	2.00	219.68	-8.46
1703.95	5.00	219.676	1700.00	-72.38	-60.04	0.00	0.00	-72.96
2704.10	25.00	219.676	2661.16	-270.62	-224.49	2.00	0.00	-272.80
3513.30	25.00	219.676	3394.54	-533.87	-442.85	0.00	0.00	-538.16
5180.17	0.00	0.000	5009.00	-809.38	-671.39	1.50	180.00	-815.88
7050.21	0.00	0.000	6879.04	-809.38	-671.39	0.00	0.00	-815.88
7950.21	90.00	0.558	7452.00	-236.45	-665.81	10.00	0.56	-242.92
18004.21	90.00	0.558	7452.00	9817.08	-567.81	0.00	0.00	9811.08

WELL DETAILS: Fox Creek 25-6302B

GL 5412' & KB 20' @ 5432.00ft 5412.00
+N/-S +E/-W Northing Easting Latitude Longitude
0.00 0.00 1599789.25 3307773.07 40° 58' 28.095 N 104° 23' 7.645 W





HighPoint Resources

Weld County, CO NAD 83
Fox Creek 25 SW Pad
Fox Creek 25-6302B

OH

Plan: Plan 1

Standard Planning Report

17 October, 2018



Database:	Casper District	Local Co-ordinate Reference:	Well Fox Creek 25-6302B
Company:	HighPoint Resources	TVD Reference:	GL 5412' & KB 20' @ 5432.00ft
Project:	Weld County, CO NAD 83	MD Reference:	GL 5412' & KB 20' @ 5432.00ft
Site:	Fox Creek 25 SW Pad	North Reference:	True
Well:	Fox Creek 25-6302B	Survey Calculation Method:	Minimum Curvature
Wellbore:	OH		
Design:	Plan 1		

Project	Weld County, CO NAD 83		
Map System:	US State Plane 1983	System Datum:	Mean Sea Level
Geo Datum:	North American Datum 1983		
Map Zone:	Colorado Northern Zone		

Site		Fox Creek 25 SW Pad, Site Center : Fox Creek 25-6104B			
Site Position:		Northing:	1,599,789.47 usft	Latitude:	40° 58' 28.092 N
From:	Lat/Long	Easting:	3,307,818.08 usft	Longitude:	104° 23' 7.058 W
Position Uncertainty:	0.00 ft	Slot Radius:	13.200 in	Grid Convergence:	0.72 °

Well	Fox Creek 25-6302B, 390' FSL 1481' FWL Sec 25 T12N R63W					
Well Position	+N/-S	0.35 ft	Northing:	1,599,789.25 usft	Latitude:	40° 58' 28.095 N
	+E/-W	-45.01 ft	Easting:	3,307,773.07 usft	Longitude:	104° 23' 7.645 W
Position Uncertainty		0.00 ft	Wellhead Elevation:	0.00 ft	Ground Level:	5,412.00 ft

Wellbore	OH				
Magnetics	Model Name	Sample Date	Declination (°)	Dip Angle (°)	Field Strength (nT)
	HDGM	10/17/2018	8.28	67.28	52,809

Design	Plan 1			
Audit Notes:				
Version:	Phase:	PLAN	Tie On Depth:	0.00
Vertical Section:	Depth From (TVD) (ft)	+N/-S (ft)	+E/-W (ft)	Direction (°)
	0.00	0.00	0.00	0.558

Plan Sections										
Measured Depth (ft)	Inclination (°)	Azimuth (°)	Vertical Depth (ft)	+N/-S (ft)	+E/-W (ft)	Dogleg Rate (°/100ft)	Build Rate (°/100ft)	Turn Rate (°/100ft)	TFO (°)	Target
0.00	0.00	0.000	0.00	0.00	0.00	0.00	0.00	0.00	0.00	
500.00	0.00	0.000	500.00	0.00	0.00	0.00	0.00	0.00	0.00	
750.00	5.00	219.676	749.68	-8.39	-6.96	2.00	2.00	0.00	219.68	
1,703.95	5.00	219.676	1,700.00	-72.38	-60.04	0.00	0.00	0.00	0.00	
2,704.10	25.00	219.676	2,661.16	-270.62	-224.49	2.00	2.00	0.00	0.00	
3,513.30	25.00	219.676	3,394.54	-533.87	-442.85	0.00	0.00	0.00	0.00	
5,180.17	0.00	0.000	5,009.00	-809.38	-671.39	1.50	-1.50	0.00	180.00	
7,050.21	0.00	0.000	6,879.04	-809.38	-671.39	0.00	0.00	0.00	0.00	
7,950.21	90.00	0.558	7,452.00	-236.45	-665.81	10.00	10.00	0.06	0.56	
18,004.21	90.00	0.558	7,452.00	9,817.08	-567.81	0.00	0.00	0.00	0.00	Fox Creek 25-6302B

Database:	Casper District	Local Co-ordinate Reference:	Well Fox Creek 25-6302B
Company:	HighPoint Resources	TVD Reference:	GL 5412' & KB 20' @ 5432.00ft
Project:	Weld County, CO NAD 83	MD Reference:	GL 5412' & KB 20' @ 5432.00ft
Site:	Fox Creek 25 SW Pad	North Reference:	True
Well:	Fox Creek 25-6302B	Survey Calculation Method:	Minimum Curvature
Wellbore:	OH		
Design:	Plan 1		

Planned Survey									
Measured Depth (ft)	Inclination (°)	Azimuth (°)	Vertical Depth (ft)	+N/-S (ft)	+E/-W (ft)	Vertical Section (ft)	Dogleg Rate (°/100ft)	Build Rate (°/100ft)	Turn Rate (°/100ft)
0.00	0.00	0.000	0.00	0.00	0.00	0.00	0.00	0.00	0.00
100.00	0.00	0.000	100.00	0.00	0.00	0.00	0.00	0.00	0.00
200.00	0.00	0.000	200.00	0.00	0.00	0.00	0.00	0.00	0.00
300.00	0.00	0.000	300.00	0.00	0.00	0.00	0.00	0.00	0.00
400.00	0.00	0.000	400.00	0.00	0.00	0.00	0.00	0.00	0.00
500.00	0.00	0.000	500.00	0.00	0.00	0.00	0.00	0.00	0.00
Start Build 2.00									
600.00	2.00	219.676	599.98	-1.34	-1.11	-1.35	2.00	2.00	0.00
700.00	4.00	219.676	699.84	-5.37	-4.46	-5.41	2.00	2.00	0.00
750.00	5.00	219.676	749.68	-8.39	-6.96	-8.46	2.00	2.00	0.00
Start 953.95 hold at 750.00 MD									
800.00	5.00	219.676	799.49	-11.74	-9.74	-11.84	0.00	0.00	0.00
900.00	5.00	219.676	899.11	-18.45	-15.31	-18.60	0.00	0.00	0.00
1,000.00	5.00	219.676	998.73	-25.16	-20.87	-25.36	0.00	0.00	0.00
1,100.00	5.00	219.676	1,098.35	-31.87	-26.44	-32.12	0.00	0.00	0.00
1,200.00	5.00	219.676	1,197.97	-38.58	-32.00	-38.89	0.00	0.00	0.00
1,300.00	5.00	219.676	1,297.59	-45.28	-37.56	-45.65	0.00	0.00	0.00
1,400.00	5.00	219.676	1,397.21	-51.99	-43.13	-52.41	0.00	0.00	0.00
1,500.00	5.00	219.676	1,496.83	-58.70	-48.69	-59.17	0.00	0.00	0.00
1,600.00	5.00	219.676	1,596.45	-65.41	-54.26	-65.93	0.00	0.00	0.00
1,700.00	5.00	219.676	1,696.07	-72.12	-59.82	-72.70	0.00	0.00	0.00
1,703.95	5.00	219.676	1,700.00	-72.38	-60.04	-72.96	0.00	0.00	0.00
Start DLS 2.00 TFO 0.00									
1,800.00	6.92	219.676	1,795.53	-80.06	-66.41	-80.70	2.00	2.00	0.00
1,900.00	8.92	219.676	1,894.57	-90.66	-75.21	-91.39	2.00	2.00	0.00
2,000.00	10.92	219.676	1,993.07	-103.92	-86.21	-104.76	2.00	2.00	0.00
2,100.00	12.92	219.676	2,090.91	-119.82	-99.39	-120.78	2.00	2.00	0.00
2,200.00	14.92	219.676	2,187.97	-138.34	-114.75	-139.45	2.00	2.00	0.00
2,300.00	16.92	219.676	2,284.12	-159.45	-132.27	-160.73	2.00	2.00	0.00
2,400.00	18.92	219.676	2,379.27	-183.13	-151.91	-184.60	2.00	2.00	0.00
2,500.00	20.92	219.676	2,473.28	-209.36	-173.66	-211.04	2.00	2.00	0.00
2,600.00	22.92	219.676	2,566.04	-238.09	-197.50	-240.00	2.00	2.00	0.00
2,700.00	24.92	219.676	2,657.45	-269.29	-223.38	-271.46	2.00	2.00	0.00
2,704.10	25.00	219.676	2,661.16	-270.62	-224.49	-272.80	2.00	2.00	0.00
Start 809.21 hold at 2704.10 MD									
2,800.00	25.00	219.676	2,748.08	-301.82	-250.37	-304.25	0.00	0.00	0.00
2,900.00	25.00	219.676	2,838.71	-334.35	-277.35	-337.04	0.00	0.00	0.00
3,000.00	25.00	219.676	2,929.34	-366.89	-304.34	-369.83	0.00	0.00	0.00
3,100.00	25.00	219.676	3,019.97	-399.42	-331.32	-402.62	0.00	0.00	0.00
3,200.00	25.00	219.676	3,110.59	-431.95	-358.31	-435.42	0.00	0.00	0.00
3,300.00	25.00	219.676	3,201.22	-464.48	-385.29	-468.21	0.00	0.00	0.00
3,400.00	25.00	219.676	3,291.85	-497.01	-412.28	-501.00	0.00	0.00	0.00
3,500.00	25.00	219.676	3,382.48	-529.54	-439.26	-533.79	0.00	0.00	0.00
3,513.30	25.00	219.676	3,394.54	-533.87	-442.85	-538.16	0.00	0.00	0.00
Start Drop -1.50									
3,600.00	23.70	219.676	3,473.52	-561.38	-465.67	-565.89	1.50	-1.50	0.00
3,700.00	22.20	219.676	3,565.60	-591.40	-490.57	-596.15	1.50	-1.50	0.00
3,800.00	20.70	219.676	3,658.67	-619.55	-513.92	-624.52	1.50	-1.50	0.00
3,900.00	19.20	219.676	3,752.66	-645.81	-535.71	-651.00	1.50	-1.50	0.00
4,000.00	17.70	219.676	3,847.52	-670.17	-555.91	-675.55	1.50	-1.50	0.00
4,100.00	16.20	219.676	3,943.17	-692.61	-574.53	-698.17	1.50	-1.50	0.00
4,200.00	14.70	219.676	4,039.55	-713.12	-591.54	-718.84	1.50	-1.50	0.00
4,300.00	13.20	219.676	4,136.60	-731.67	-606.93	-737.55	1.50	-1.50	0.00
4,400.00	11.70	219.676	4,234.24	-748.27	-620.70	-754.28	1.50	-1.50	0.00

Database:	Casper District	Local Co-ordinate Reference:	Well Fox Creek 25-6302B
Company:	HighPoint Resources	TVD Reference:	GL 5412' & KB 20' @ 5432.00ft
Project:	Weld County, CO NAD 83	MD Reference:	GL 5412' & KB 20' @ 5432.00ft
Site:	Fox Creek 25 SW Pad	North Reference:	True
Well:	Fox Creek 25-6302B	Survey Calculation Method:	Minimum Curvature
Wellbore:	OH		
Design:	Plan 1		

Planned Survey									
Measured Depth (ft)	Inclination (°)	Azimuth (°)	Vertical Depth (ft)	+N/-S (ft)	+E/-W (ft)	Vertical Section (ft)	Dogleg Rate (°/100ft)	Build Rate (°/100ft)	Turn Rate (°/100ft)
4,500.00	10.20	219.676	4,332.42	-762.89	-632.83	-769.02	1.50	-1.50	0.00
4,600.00	8.70	219.676	4,431.06	-775.53	-643.31	-781.76	1.50	-1.50	0.00
4,700.00	7.20	219.676	4,530.10	-786.18	-652.15	-792.50	1.50	-1.50	0.00
4,800.00	5.70	219.676	4,629.46	-794.83	-659.32	-801.21	1.50	-1.50	0.00
4,900.00	4.20	219.676	4,729.08	-801.48	-664.83	-807.91	1.50	-1.50	0.00
5,000.00	2.70	219.676	4,828.90	-806.11	-668.68	-812.58	1.50	-1.50	0.00
5,100.00	1.20	219.676	4,928.84	-808.73	-670.85	-815.23	1.50	-1.50	0.00
5,180.17	0.00	0.000	5,009.00	-809.38	-671.39	-815.88	1.50	-1.50	175.04
Start 1870.04 hold at 5180.17 MD									
5,200.00	0.00	0.000	5,028.83	-809.38	-671.39	-815.88	0.00	0.00	0.00
5,300.00	0.00	0.000	5,128.83	-809.38	-671.39	-815.88	0.00	0.00	0.00
5,400.00	0.00	0.000	5,228.83	-809.38	-671.39	-815.88	0.00	0.00	0.00
5,500.00	0.00	0.000	5,328.83	-809.38	-671.39	-815.88	0.00	0.00	0.00
5,600.00	0.00	0.000	5,428.83	-809.38	-671.39	-815.88	0.00	0.00	0.00
5,700.00	0.00	0.000	5,528.83	-809.38	-671.39	-815.88	0.00	0.00	0.00
5,800.00	0.00	0.000	5,628.83	-809.38	-671.39	-815.88	0.00	0.00	0.00
5,900.00	0.00	0.000	5,728.83	-809.38	-671.39	-815.88	0.00	0.00	0.00
6,000.00	0.00	0.000	5,828.83	-809.38	-671.39	-815.88	0.00	0.00	0.00
6,100.00	0.00	0.000	5,928.83	-809.38	-671.39	-815.88	0.00	0.00	0.00
6,200.00	0.00	0.000	6,028.83	-809.38	-671.39	-815.88	0.00	0.00	0.00
6,300.00	0.00	0.000	6,128.83	-809.38	-671.39	-815.88	0.00	0.00	0.00
6,400.00	0.00	0.000	6,228.83	-809.38	-671.39	-815.88	0.00	0.00	0.00
6,500.00	0.00	0.000	6,328.83	-809.38	-671.39	-815.88	0.00	0.00	0.00
6,600.00	0.00	0.000	6,428.83	-809.38	-671.39	-815.88	0.00	0.00	0.00
6,700.00	0.00	0.000	6,528.83	-809.38	-671.39	-815.88	0.00	0.00	0.00
6,800.00	0.00	0.000	6,628.83	-809.38	-671.39	-815.88	0.00	0.00	0.00
6,900.00	0.00	0.000	6,728.83	-809.38	-671.39	-815.88	0.00	0.00	0.00
7,000.00	0.00	0.000	6,828.83	-809.38	-671.39	-815.88	0.00	0.00	0.00
7,050.21	0.00	0.000	6,879.04	-809.38	-671.39	-815.88	0.00	0.00	0.00
Start DLS 10.00 TFO 0.56									
7,100.00	4.98	0.558	6,928.77	-807.22	-671.37	-813.72	10.00	10.00	0.00
7,200.00	14.98	0.558	7,027.13	-789.91	-671.20	-796.41	10.00	10.00	0.00
7,300.00	24.98	0.558	7,120.99	-755.79	-670.87	-762.29	10.00	10.00	0.00
7,400.00	34.98	0.558	7,207.50	-705.89	-670.38	-712.38	10.00	10.00	0.00
7,500.00	44.98	0.558	7,284.03	-641.72	-669.76	-648.21	10.00	10.00	0.00
7,600.00	54.98	0.558	7,348.26	-565.24	-669.01	-571.73	10.00	10.00	0.00
7,700.00	64.98	0.558	7,398.23	-478.77	-668.17	-485.25	10.00	10.00	0.00
7,800.00	74.98	0.558	7,432.42	-384.94	-667.25	-391.42	10.00	10.00	0.00
7,900.00	84.98	0.558	7,449.80	-286.59	-666.29	-293.07	10.00	10.00	0.00
7,950.21	90.00	0.558	7,452.00	-236.45	-665.81	-242.92	10.00	10.00	0.00
Start 10054.00 hold at 7950.21 MD									
8,000.00	90.00	0.558	7,452.00	-186.66	-665.32	-193.13	0.00	0.00	0.00
8,100.00	90.00	0.558	7,452.00	-86.67	-664.35	-93.13	0.00	0.00	0.00
8,200.00	90.00	0.558	7,452.00	13.33	-663.37	6.87	0.00	0.00	0.00
8,300.00	90.00	0.558	7,452.00	113.33	-662.40	106.87	0.00	0.00	0.00
8,400.00	90.00	0.558	7,452.00	213.32	-661.42	206.87	0.00	0.00	0.00
8,500.00	90.00	0.558	7,452.00	313.32	-660.45	306.87	0.00	0.00	0.00
8,600.00	90.00	0.558	7,452.00	413.31	-659.47	406.87	0.00	0.00	0.00
8,700.00	90.00	0.558	7,452.00	513.31	-658.50	506.87	0.00	0.00	0.00
8,800.00	90.00	0.558	7,452.00	613.30	-657.52	606.87	0.00	0.00	0.00
8,900.00	90.00	0.558	7,452.00	713.30	-656.55	706.87	0.00	0.00	0.00
9,000.00	90.00	0.558	7,452.00	813.29	-655.57	806.87	0.00	0.00	0.00
9,100.00	90.00	0.558	7,452.00	913.29	-654.60	906.87	0.00	0.00	0.00

Database:	Casper District	Local Co-ordinate Reference:	Well Fox Creek 25-6302B
Company:	HighPoint Resources	TVD Reference:	GL 5412' & KB 20' @ 5432.00ft
Project:	Weld County, CO NAD 83	MD Reference:	GL 5412' & KB 20' @ 5432.00ft
Site:	Fox Creek 25 SW Pad	North Reference:	True
Well:	Fox Creek 25-6302B	Survey Calculation Method:	Minimum Curvature
Wellbore:	OH		
Design:	Plan 1		

Planned Survey									
Measured Depth (ft)	Inclination (°)	Azimuth (°)	Vertical Depth (ft)	+N/-S (ft)	+E/-W (ft)	Vertical Section (ft)	Dogleg Rate (°/100ft)	Build Rate (°/100ft)	Turn Rate (°/100ft)
9,200.00	90.00	0.558	7,452.00	1,013.28	-653.62	1,006.87	0.00	0.00	0.00
9,300.00	90.00	0.558	7,452.00	1,113.28	-652.65	1,106.87	0.00	0.00	0.00
9,400.00	90.00	0.558	7,452.00	1,213.27	-651.68	1,206.87	0.00	0.00	0.00
9,500.00	90.00	0.558	7,452.00	1,313.27	-650.70	1,306.87	0.00	0.00	0.00
9,600.00	90.00	0.558	7,452.00	1,413.26	-649.73	1,406.87	0.00	0.00	0.00
9,700.00	90.00	0.558	7,452.00	1,513.26	-648.75	1,506.87	0.00	0.00	0.00
9,800.00	90.00	0.558	7,452.00	1,613.25	-647.78	1,606.87	0.00	0.00	0.00
9,900.00	90.00	0.558	7,452.00	1,713.25	-646.80	1,706.87	0.00	0.00	0.00
10,000.00	90.00	0.558	7,452.00	1,813.24	-645.83	1,806.87	0.00	0.00	0.00
10,100.00	90.00	0.558	7,452.00	1,913.24	-644.85	1,906.87	0.00	0.00	0.00
10,200.00	90.00	0.558	7,452.00	2,013.24	-643.88	2,006.87	0.00	0.00	0.00
10,300.00	90.00	0.558	7,452.00	2,113.23	-642.90	2,106.87	0.00	0.00	0.00
10,400.00	90.00	0.558	7,452.00	2,213.23	-641.93	2,206.87	0.00	0.00	0.00
10,500.00	90.00	0.558	7,452.00	2,313.22	-640.95	2,306.87	0.00	0.00	0.00
10,600.00	90.00	0.558	7,452.00	2,413.22	-639.98	2,406.87	0.00	0.00	0.00
10,700.00	90.00	0.558	7,452.00	2,513.21	-639.00	2,506.87	0.00	0.00	0.00
10,800.00	90.00	0.558	7,452.00	2,613.21	-638.03	2,606.87	0.00	0.00	0.00
10,900.00	90.00	0.558	7,452.00	2,713.20	-637.06	2,706.87	0.00	0.00	0.00
11,000.00	90.00	0.558	7,452.00	2,813.20	-636.08	2,806.87	0.00	0.00	0.00
11,100.00	90.00	0.558	7,452.00	2,913.19	-635.11	2,906.87	0.00	0.00	0.00
11,200.00	90.00	0.558	7,452.00	3,013.19	-634.13	3,006.87	0.00	0.00	0.00
11,300.00	90.00	0.558	7,452.00	3,113.18	-633.16	3,106.87	0.00	0.00	0.00
11,400.00	90.00	0.558	7,452.00	3,213.18	-632.18	3,206.87	0.00	0.00	0.00
11,500.00	90.00	0.558	7,452.00	3,313.17	-631.21	3,306.87	0.00	0.00	0.00
11,600.00	90.00	0.558	7,452.00	3,413.17	-630.23	3,406.87	0.00	0.00	0.00
11,700.00	90.00	0.558	7,452.00	3,513.16	-629.26	3,506.87	0.00	0.00	0.00
11,800.00	90.00	0.558	7,452.00	3,613.16	-628.28	3,606.87	0.00	0.00	0.00
11,900.00	90.00	0.558	7,452.00	3,713.15	-627.31	3,706.87	0.00	0.00	0.00
12,000.00	90.00	0.558	7,452.00	3,813.15	-626.33	3,806.87	0.00	0.00	0.00
12,100.00	90.00	0.558	7,452.00	3,913.14	-625.36	3,906.87	0.00	0.00	0.00
12,200.00	90.00	0.558	7,452.00	4,013.14	-624.39	4,006.87	0.00	0.00	0.00
12,300.00	90.00	0.558	7,452.00	4,113.14	-623.41	4,106.87	0.00	0.00	0.00
12,400.00	90.00	0.558	7,452.00	4,213.13	-622.44	4,206.87	0.00	0.00	0.00
12,500.00	90.00	0.558	7,452.00	4,313.13	-621.46	4,306.87	0.00	0.00	0.00
12,600.00	90.00	0.558	7,452.00	4,413.12	-620.49	4,406.87	0.00	0.00	0.00
12,700.00	90.00	0.558	7,452.00	4,513.12	-619.51	4,506.87	0.00	0.00	0.00
12,800.00	90.00	0.558	7,452.00	4,613.11	-618.54	4,606.87	0.00	0.00	0.00
12,900.00	90.00	0.558	7,452.00	4,713.11	-617.56	4,706.87	0.00	0.00	0.00
13,000.00	90.00	0.558	7,452.00	4,813.10	-616.59	4,806.87	0.00	0.00	0.00
13,100.00	90.00	0.558	7,452.00	4,913.10	-615.61	4,906.87	0.00	0.00	0.00
13,200.00	90.00	0.558	7,452.00	5,013.09	-614.64	5,006.87	0.00	0.00	0.00
13,300.00	90.00	0.558	7,452.00	5,113.09	-613.66	5,106.87	0.00	0.00	0.00
13,400.00	90.00	0.558	7,452.00	5,213.08	-612.69	5,206.87	0.00	0.00	0.00
13,500.00	90.00	0.558	7,452.00	5,313.08	-611.71	5,306.87	0.00	0.00	0.00
13,600.00	90.00	0.558	7,452.00	5,413.07	-610.74	5,406.87	0.00	0.00	0.00
13,700.00	90.00	0.558	7,452.00	5,513.07	-609.77	5,506.87	0.00	0.00	0.00
13,800.00	90.00	0.558	7,452.00	5,613.06	-608.79	5,606.87	0.00	0.00	0.00
13,900.00	90.00	0.558	7,452.00	5,713.06	-607.82	5,706.87	0.00	0.00	0.00
14,000.00	90.00	0.558	7,452.00	5,813.05	-606.84	5,806.87	0.00	0.00	0.00
14,100.00	90.00	0.558	7,452.00	5,913.05	-605.87	5,906.87	0.00	0.00	0.00
14,200.00	90.00	0.558	7,452.00	6,013.05	-604.89	6,006.87	0.00	0.00	0.00
14,300.00	90.00	0.558	7,452.00	6,113.04	-603.92	6,106.87	0.00	0.00	0.00
14,400.00	90.00	0.558	7,452.00	6,213.04	-602.94	6,206.87	0.00	0.00	0.00
14,500.00	90.00	0.558	7,452.00	6,313.03	-601.97	6,306.87	0.00	0.00	0.00

Database:	Casper District	Local Co-ordinate Reference:	Well Fox Creek 25-6302B
Company:	HighPoint Resources	TVD Reference:	GL 5412' & KB 20' @ 5432.00ft
Project:	Weld County, CO NAD 83	MD Reference:	GL 5412' & KB 20' @ 5432.00ft
Site:	Fox Creek 25 SW Pad	North Reference:	True
Well:	Fox Creek 25-6302B	Survey Calculation Method:	Minimum Curvature
Wellbore:	OH		
Design:	Plan 1		

Planned Survey									
Measured Depth (ft)	Inclination (°)	Azimuth (°)	Vertical Depth (ft)	+N/-S (ft)	+E/-W (ft)	Vertical Section (ft)	Dogleg Rate (°/100ft)	Build Rate (°/100ft)	Turn Rate (°/100ft)
14,600.00	90.00	0.558	7,452.00	6,413.03	-600.99	6,406.87	0.00	0.00	0.00
14,700.00	90.00	0.558	7,452.00	6,513.02	-600.02	6,506.87	0.00	0.00	0.00
14,800.00	90.00	0.558	7,452.00	6,613.02	-599.04	6,606.87	0.00	0.00	0.00
14,900.00	90.00	0.558	7,452.00	6,713.01	-598.07	6,706.87	0.00	0.00	0.00
15,000.00	90.00	0.558	7,452.00	6,813.01	-597.09	6,806.87	0.00	0.00	0.00
15,100.00	90.00	0.558	7,452.00	6,913.00	-596.12	6,906.87	0.00	0.00	0.00
15,200.00	90.00	0.558	7,452.00	7,013.00	-595.15	7,006.87	0.00	0.00	0.00
15,300.00	90.00	0.558	7,452.00	7,112.99	-594.17	7,106.87	0.00	0.00	0.00
15,400.00	90.00	0.558	7,452.00	7,212.99	-593.20	7,206.87	0.00	0.00	0.00
15,500.00	90.00	0.558	7,452.00	7,312.98	-592.22	7,306.87	0.00	0.00	0.00
15,600.00	90.00	0.558	7,452.00	7,412.98	-591.25	7,406.87	0.00	0.00	0.00
15,700.00	90.00	0.558	7,452.00	7,512.97	-590.27	7,506.87	0.00	0.00	0.00
15,800.00	90.00	0.558	7,452.00	7,612.97	-589.30	7,606.87	0.00	0.00	0.00
15,900.00	90.00	0.558	7,452.00	7,712.96	-588.32	7,706.87	0.00	0.00	0.00
16,000.00	90.00	0.558	7,452.00	7,812.96	-587.35	7,806.87	0.00	0.00	0.00
16,100.00	90.00	0.558	7,452.00	7,912.96	-586.37	7,906.87	0.00	0.00	0.00
16,200.00	90.00	0.558	7,452.00	8,012.95	-585.40	8,006.87	0.00	0.00	0.00
16,300.00	90.00	0.558	7,452.00	8,112.95	-584.42	8,106.87	0.00	0.00	0.00
16,400.00	90.00	0.558	7,452.00	8,212.94	-583.45	8,206.87	0.00	0.00	0.00
16,500.00	90.00	0.558	7,452.00	8,312.94	-582.48	8,306.87	0.00	0.00	0.00
16,600.00	90.00	0.558	7,452.00	8,412.93	-581.50	8,406.87	0.00	0.00	0.00
16,700.00	90.00	0.558	7,452.00	8,512.93	-580.53	8,506.87	0.00	0.00	0.00
16,800.00	90.00	0.558	7,452.00	8,612.92	-579.55	8,606.87	0.00	0.00	0.00
16,900.00	90.00	0.558	7,452.00	8,712.92	-578.58	8,706.87	0.00	0.00	0.00
17,000.00	90.00	0.558	7,452.00	8,812.91	-577.60	8,806.87	0.00	0.00	0.00
17,100.00	90.00	0.558	7,452.00	8,912.91	-576.63	8,906.87	0.00	0.00	0.00
17,200.00	90.00	0.558	7,452.00	9,012.90	-575.65	9,006.87	0.00	0.00	0.00
17,300.00	90.00	0.558	7,452.00	9,112.90	-574.68	9,106.87	0.00	0.00	0.00
17,400.00	90.00	0.558	7,452.00	9,212.89	-573.70	9,206.87	0.00	0.00	0.00
17,500.00	90.00	0.558	7,452.00	9,312.89	-572.73	9,306.87	0.00	0.00	0.00
17,600.00	90.00	0.558	7,452.00	9,412.88	-571.75	9,406.87	0.00	0.00	0.00
17,700.00	90.00	0.558	7,452.00	9,512.88	-570.78	9,506.87	0.00	0.00	0.00
17,800.00	90.00	0.558	7,452.00	9,612.87	-569.80	9,606.87	0.00	0.00	0.00
17,900.00	90.00	0.558	7,452.00	9,712.87	-568.83	9,706.87	0.00	0.00	0.00
18,000.00	90.00	0.558	7,452.00	9,812.86	-567.86	9,806.87	0.00	0.00	0.00
18,004.21	90.00	0.558	7,452.00	9,817.07	-567.81	9,811.08	0.00	0.00	0.00
TD at 18004.21									

Design Targets									
Target Name	Dip Angle (°)	Dip Dir. (°)	TVD (ft)	+N/-S (ft)	+E/-W (ft)	Northing (usft)	Easting (usft)	Latitude	Longitude
- hit/miss target									
- Shape									
Fox Creek 25-6302B LP - plan hits target center - Point	0.00	0.000	7,452.00	-236.45	-665.81	1,599,544.45	3,307,110.29	40° 58' 25.759 N	104° 23' 16.325 W
Fox Creek 25-6302B PB - plan hits target center - Point	0.00	0.000	7,452.00	9,817.08	-567.81	1,609,598.39	3,307,081.92	41° 0' 5.090 N	104° 23' 15.050 W

Database:	Casper District	Local Co-ordinate Reference:	Well Fox Creek 25-6302B
Company:	HighPoint Resources	TVD Reference:	GL 5412' & KB 20' @ 5432.00ft
Project:	Weld County, CO NAD 83	MD Reference:	GL 5412' & KB 20' @ 5432.00ft
Site:	Fox Creek 25 SW Pad	North Reference:	True
Well:	Fox Creek 25-6302B	Survey Calculation Method:	Minimum Curvature
Wellbore:	OH		
Design:	Plan 1		

Plan Annotations				
Measured Depth (ft)	Vertical Depth (ft)	Local Coordinates		Comment
		+N/-S (ft)	+E/-W (ft)	
500.00	500.00	0.00	0.00	Start Build 2.00
750.00	749.68	-8.39	-6.96	Start 953.95 hold at 750.00 MD
1,703.95	1,700.00	-72.38	-60.04	Start DLS 2.00 TFO 0.00
2,704.10	2,661.16	-270.62	-224.49	Start 809.21 hold at 2704.10 MD
3,513.30	3,394.54	-533.87	-442.85	Start Drop -1.50
5,180.17	5,009.00	-809.38	-671.39	Start 1870.04 hold at 5180.17 MD
7,050.21	6,879.04	-809.38	-671.39	Start DLS 10.00 TFO 0.56
7,950.21	7,452.00	-236.45	-665.81	Start 10054.00 hold at 7950.21 MD
18,004.21	7,452.00	9,817.07	-567.81	TD at 18004.21