

GEARHART

CEMENT BOND WITH
NUCLEAR LOG

FILING NO.

COMPANY CHANDLER & ASSOCIATES

WELL FORK UNIT 9-10-2-2

FIELD FORK UNIT

COUNTY RIO BLANCO STATE COLORADO

LOCATION NE/SE

SEC. 10 TWP. 25S RGE. 102W

OTHER SERVICES:

PERFORATE

PERMANENT DATUM: G.L. ELEV. 6568

LOG MEASURED FROM K.B. 12 FT. ABOVE PERM. DATUM

DILLING MEASURED FROM K.B.

ELEV. K.B. 6580

D.F. 6568

Date 7-22-81

Run No. 0ne Type Fluid in Hole KCL Water

Depth-Driller 3236 Dens. Max. Rec. Temp.

Depth-Logger 3148 Est. Cement Top 2250

Btm. Log Interval 3142 Equip. Location 6033 29-078

Top Log Interval 2910 Recorded By Barryl Cowley

Open Hole Size 7 7/8 Witnessed By Mr. Reese

CASING REC. Size 8 5/8 Wt/Ft Grade Type Joint Top Bottom

Surface String 8 5/8 Surface Surface 185

Prot. String 5 1/2 Surface T.D.

Prod. String 5 1/2 Surface T.D.

Liner

PRIMARY CEMENTING DATA

STRING Surface Protection Production Liner

Vol. of cement

Type of cement

Additive

Additive by %

Retarder

Retarder by %

Wt. of slurry

Water loss

Drill. mud type

Drilling mud wt.

COMPRESSIVE STRENGTH (p.s.i.) Curing Temp.)

Time Elapsed	Surface	Protective	Production	Liner
24 hrs.		°F	°F	°F
48 hrs.		°F	°F	°F
72 hrs.		°F	°F	°F

PRIMARY CEMENTING PROCEDURE

Bond Equipment Data

Hour - date	Hours from start of operation	Run No.	Type standoff	Rubber
Started pumping cement			Logging speed	30' /min.
Plug on bottom			Sig. Sen.	20
Release pressure			Out. Sen.	220
Start Cement Bond Log			T-R Sapcing	3 ft.
Finish Cement Bond Log			Tool Type	Comb.

Preceding fluid _____ Volume _____ bbls. Pipe reciprocated during Pumping: Yes _____ No _____
Returns: Full _____ Partial _____ None _____ Pipe reciprocated after plug down: Yes _____ min., No _____

GAMMA-RAY

Depths

AMPLITUDE CURVE

BONDING INCREASES

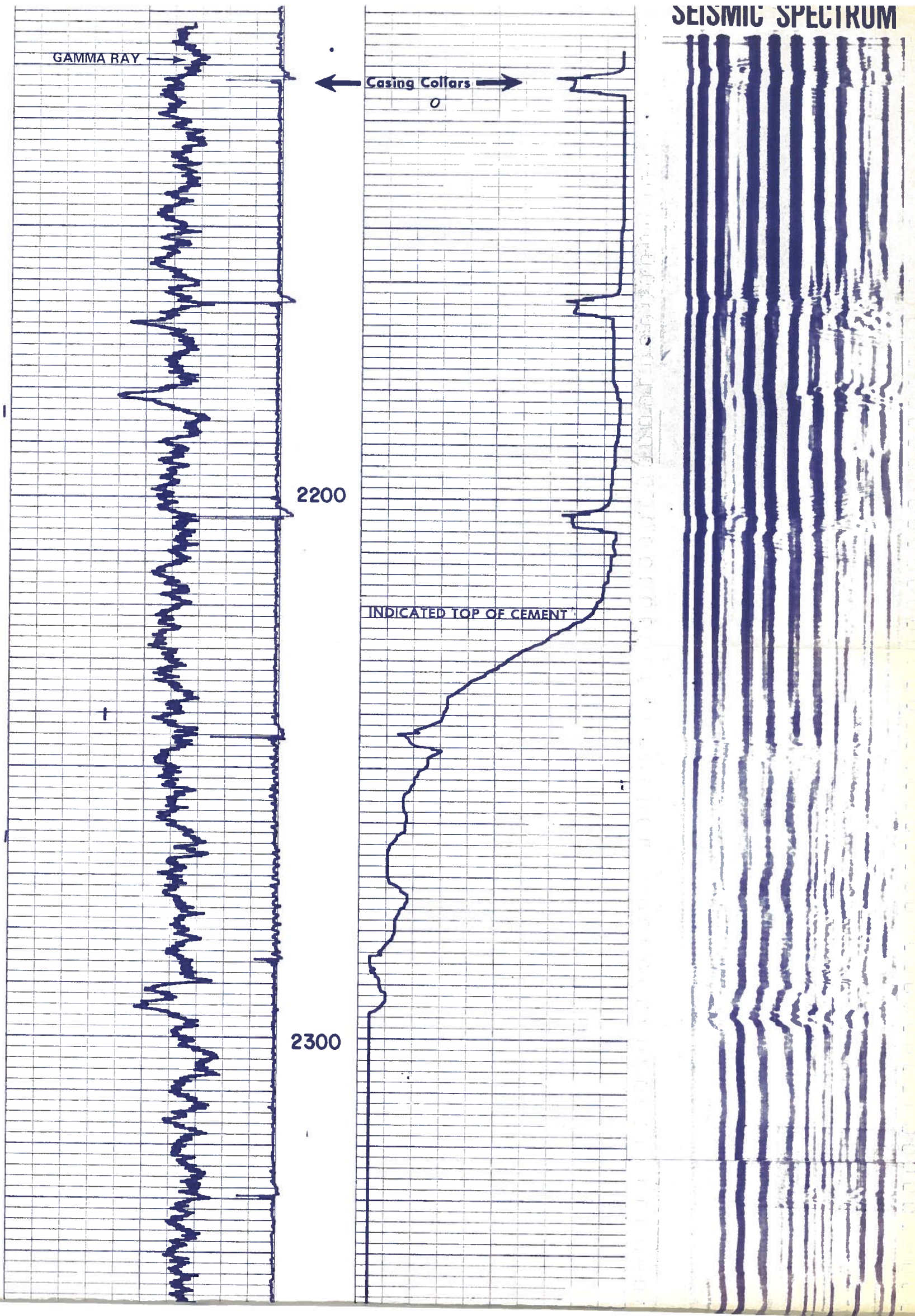
SEISMIC SPECTRUM

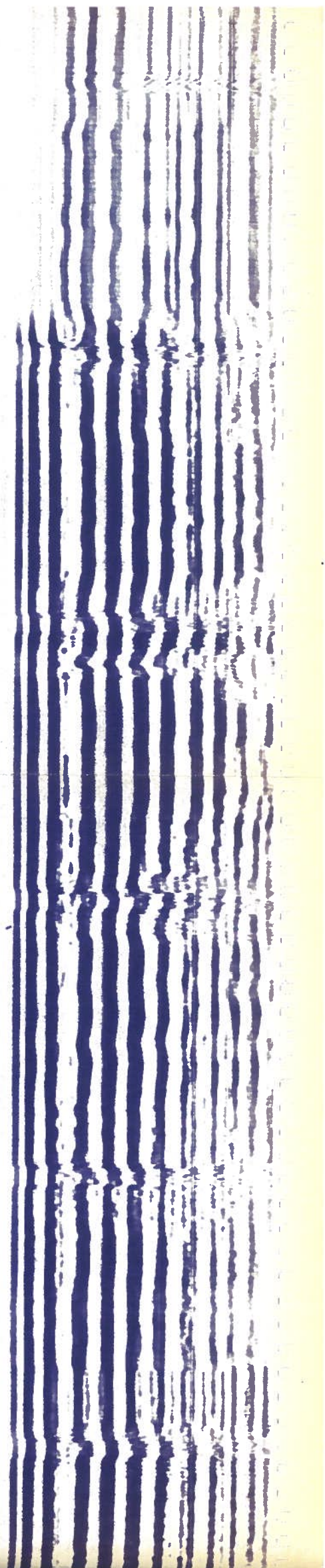
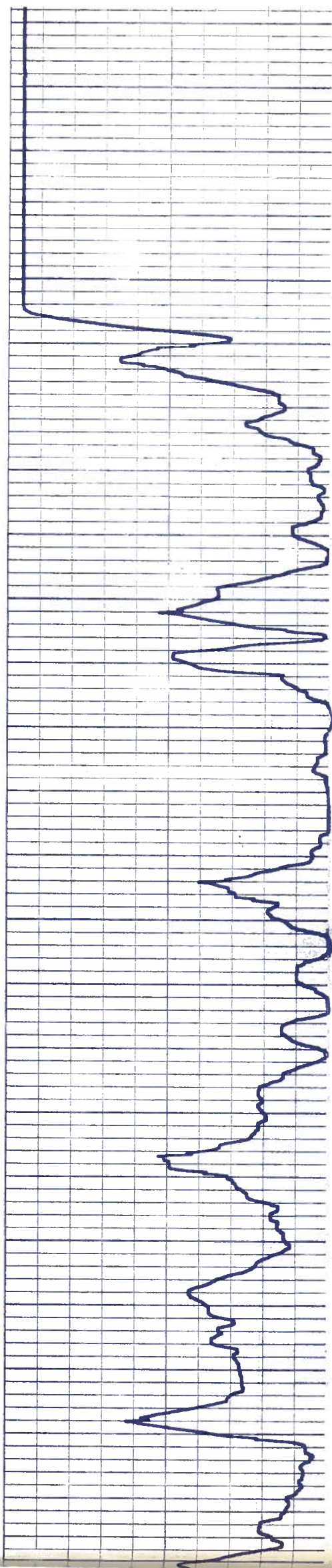
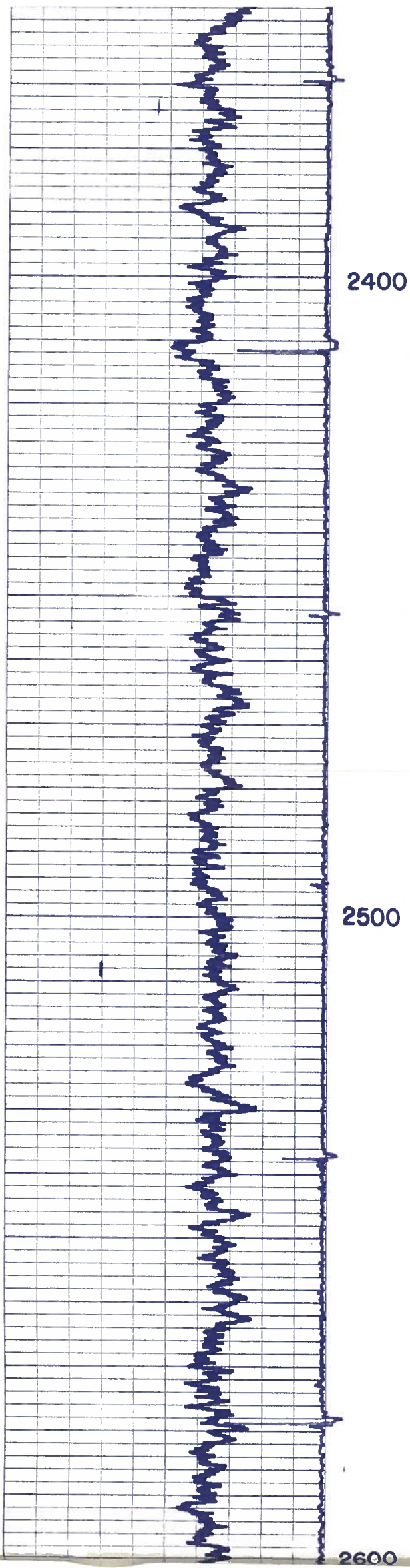
Collar Log

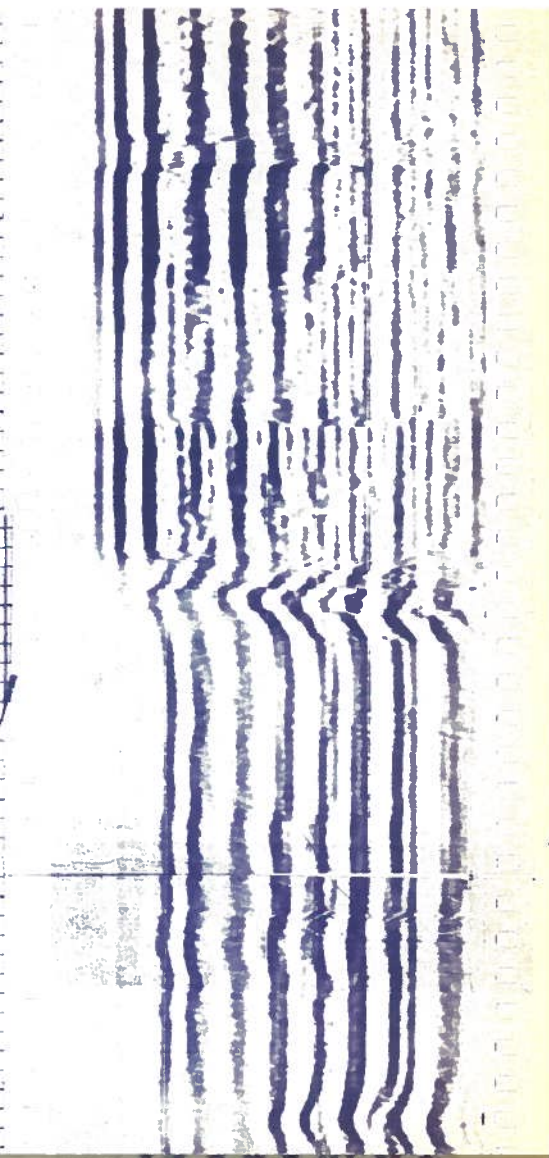
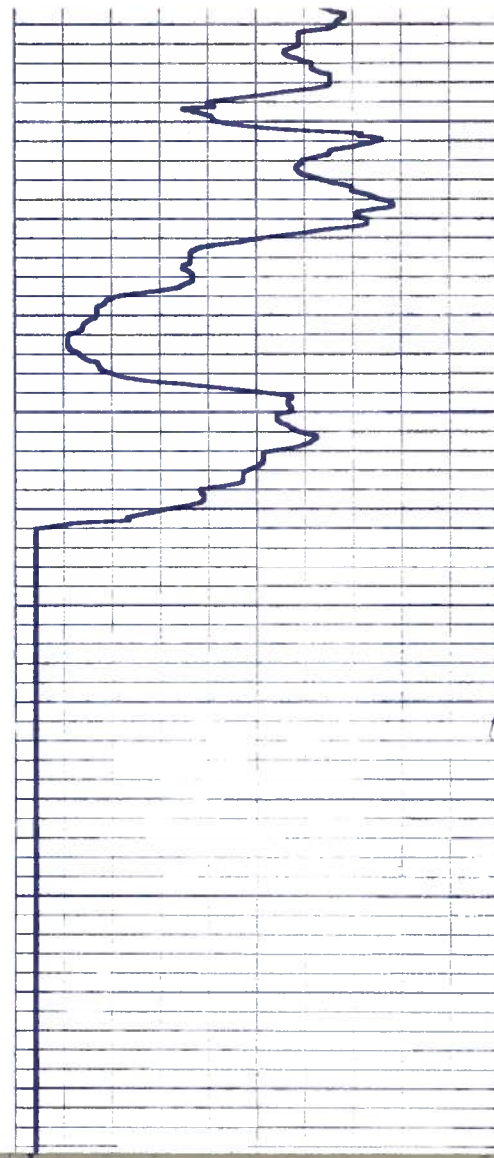
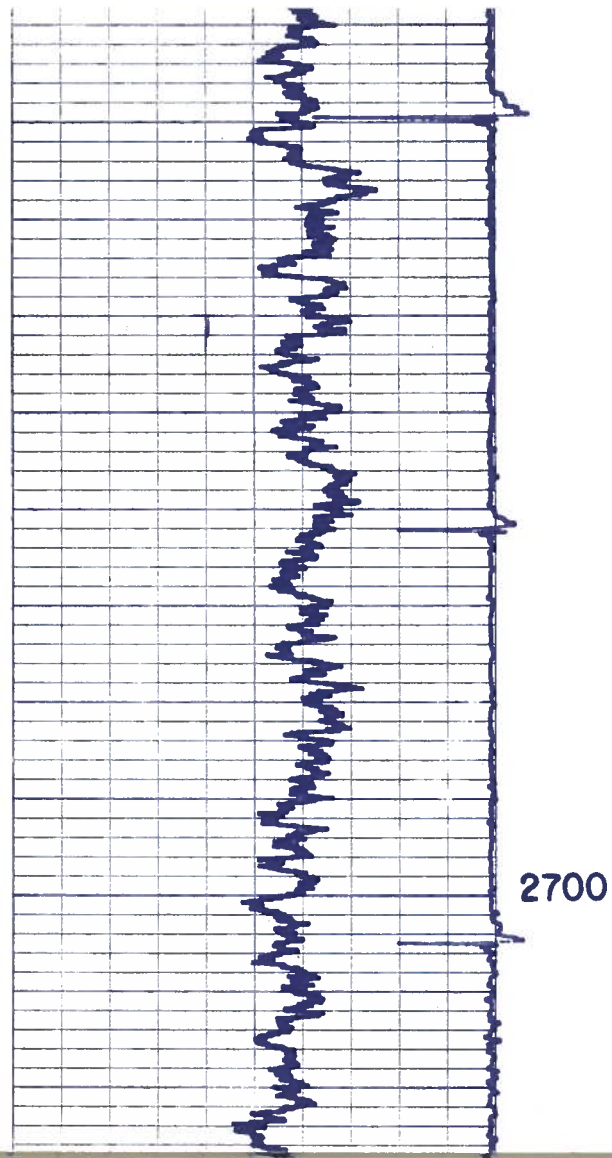
0 MILLIVOLTS 50 0 MICRO SECONDS 1000

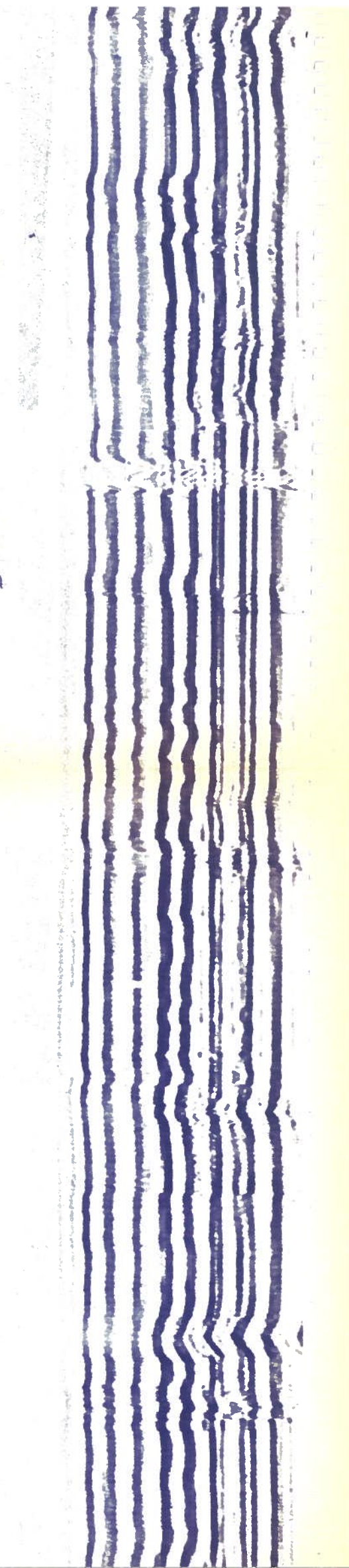
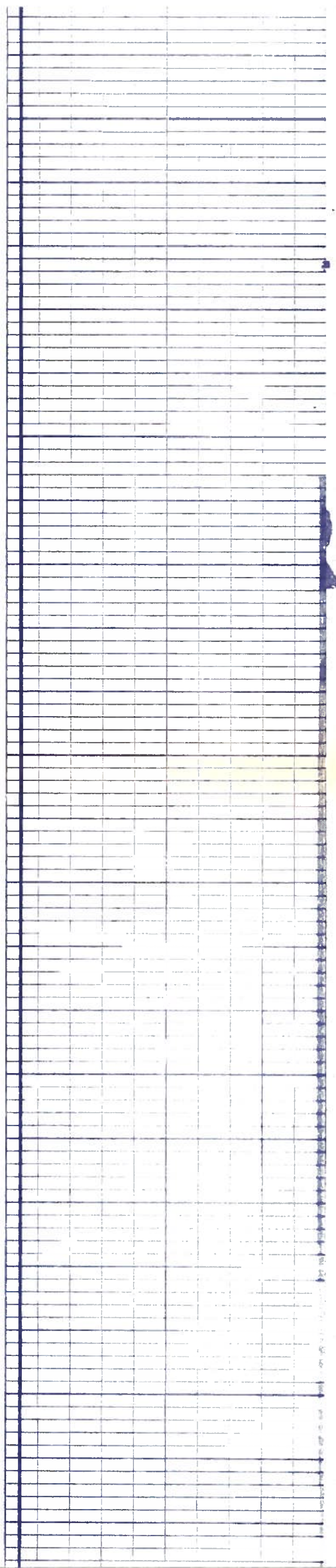
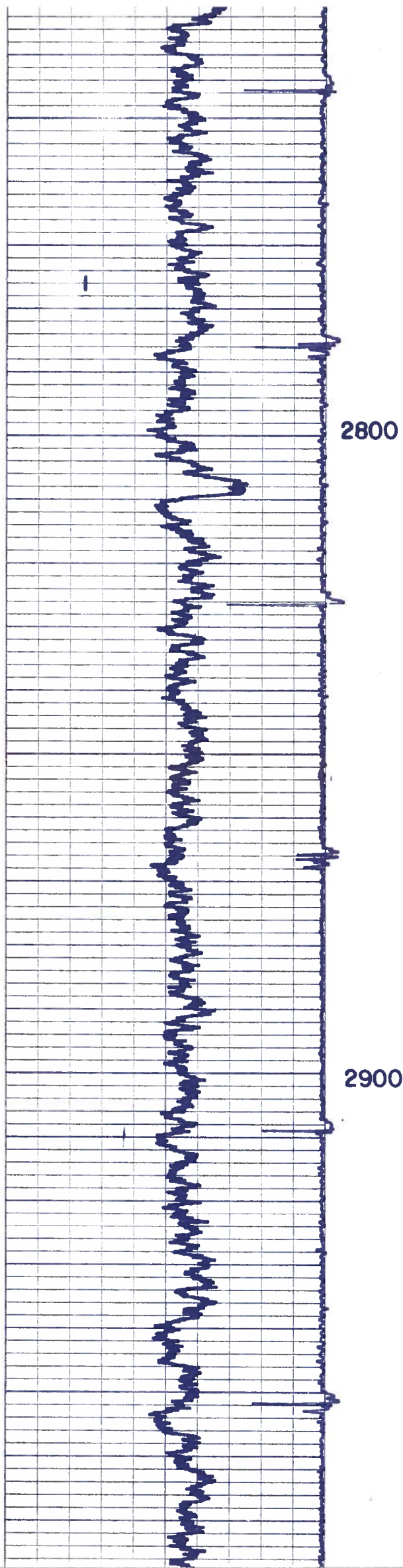
100% Bonding 0%

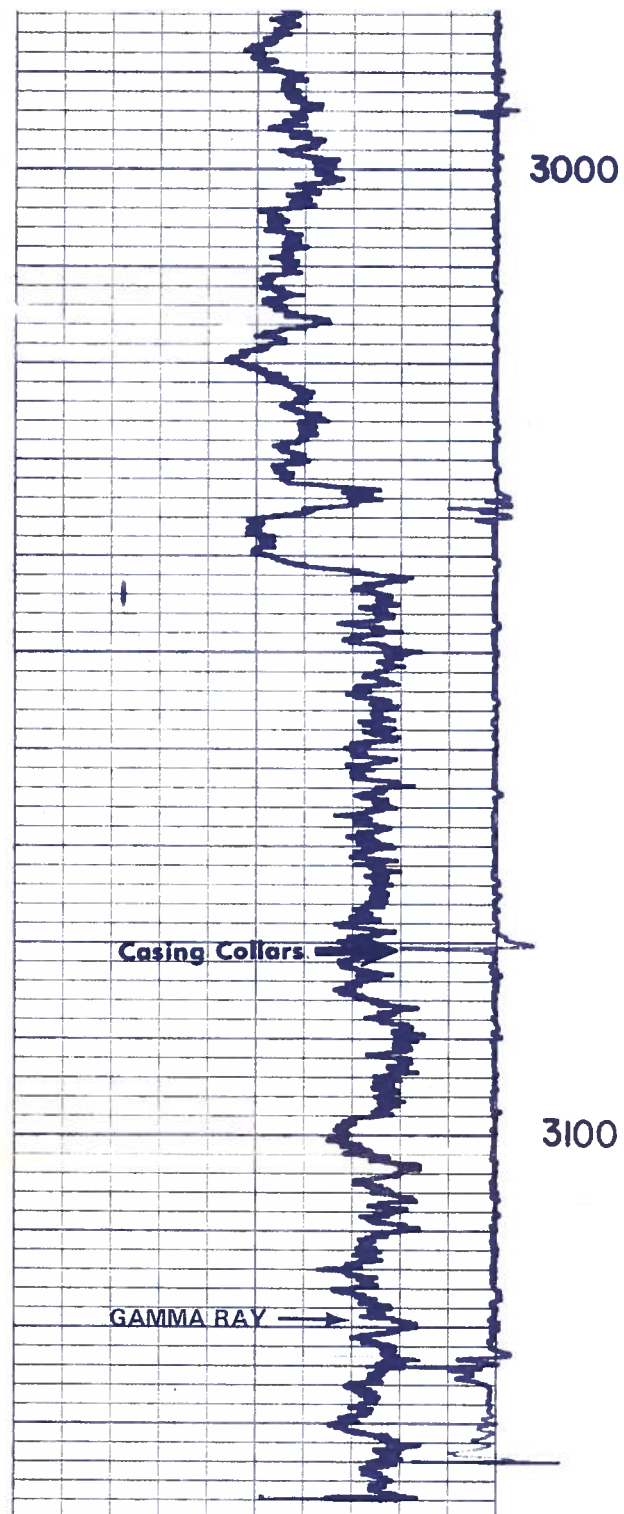
2100





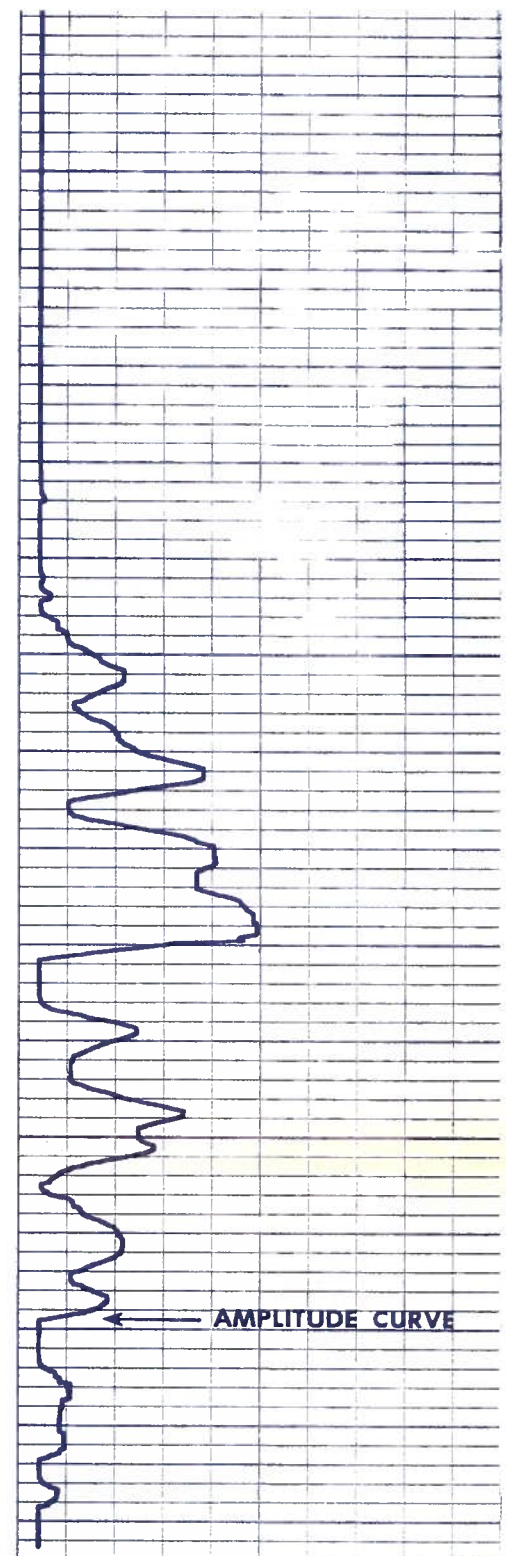
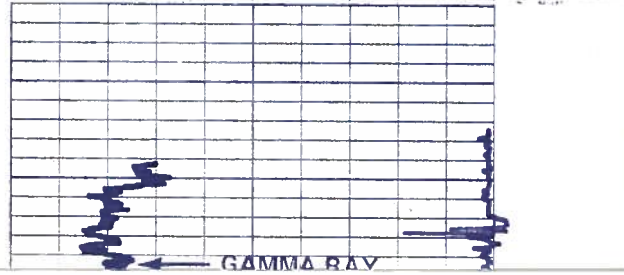




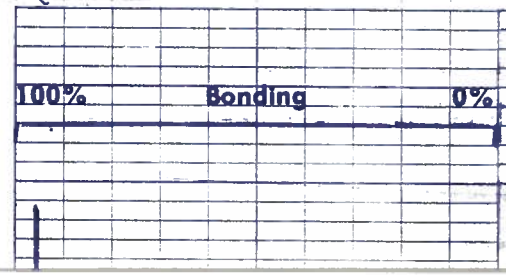


RD 3142
TD 3148

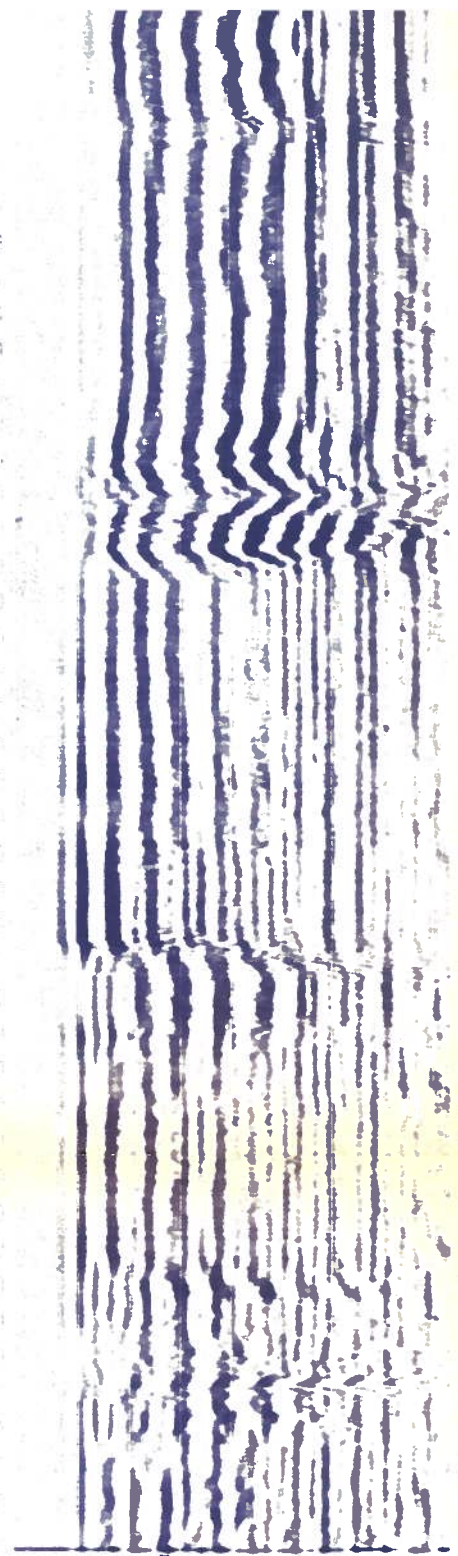
REPEAT SECTION



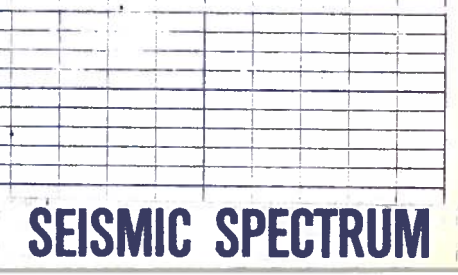
100% Bonding 0%



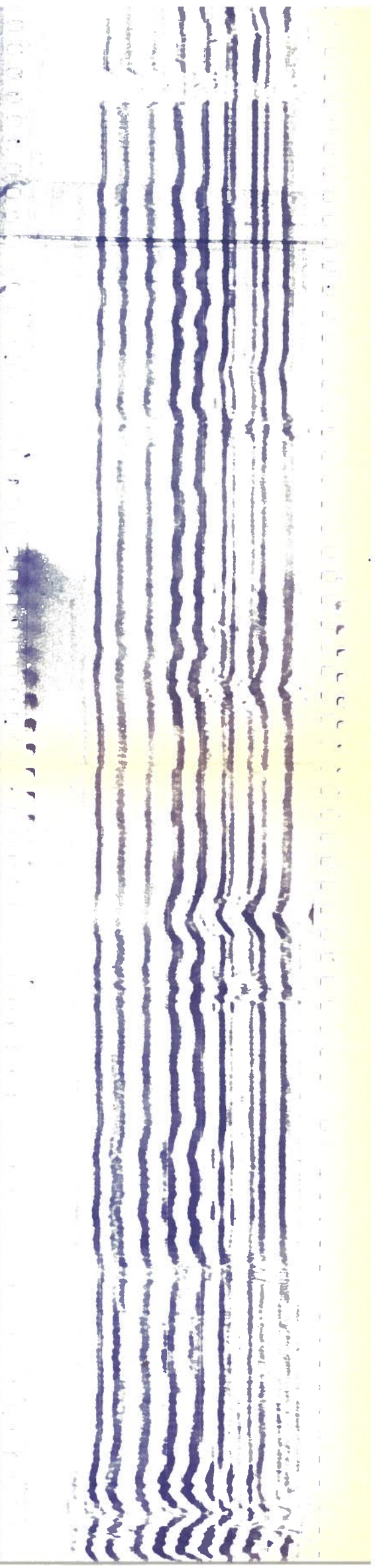
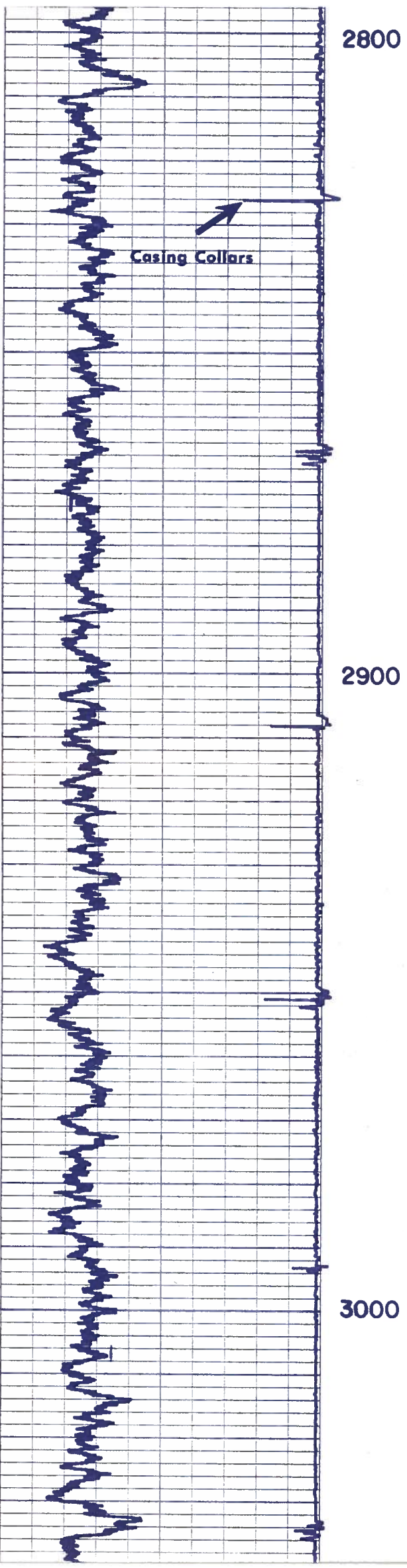
100% Bonding 0%

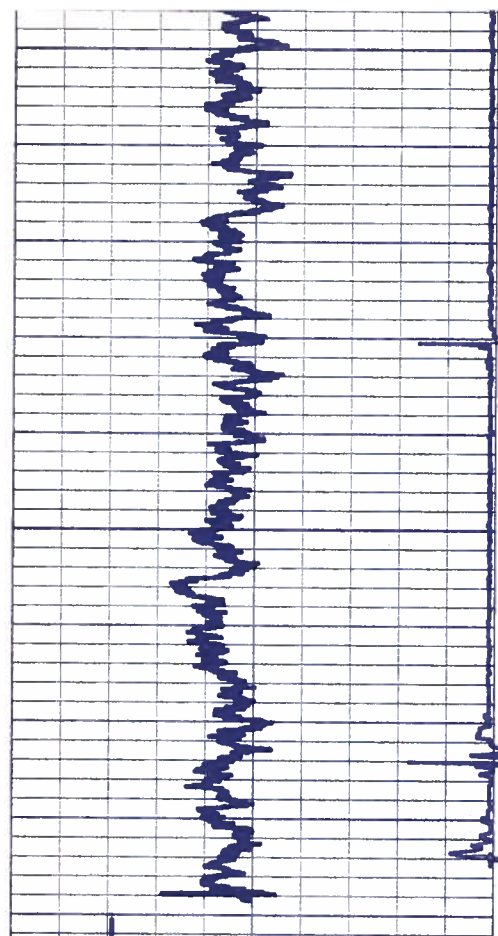


SEISMIC SPECTRUM



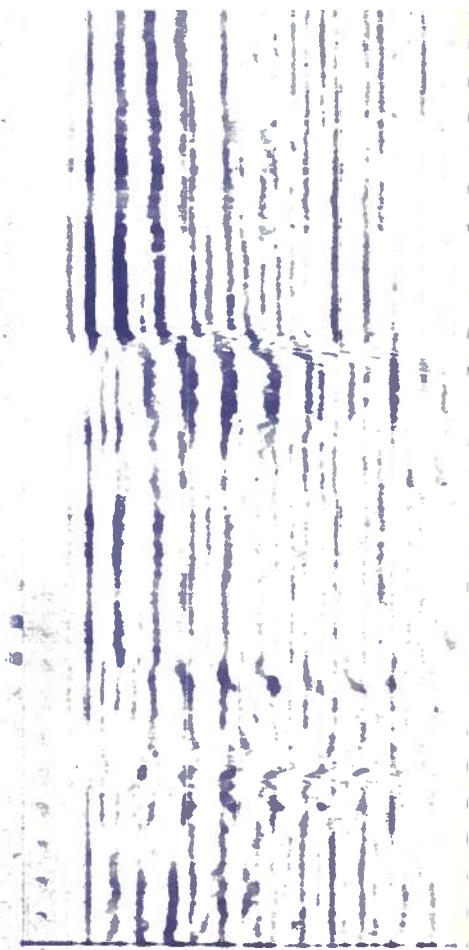
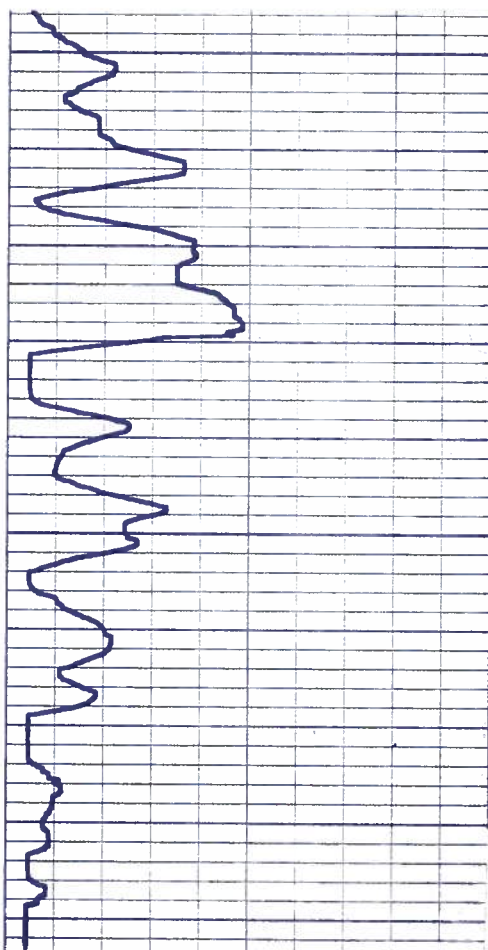
SEISMIC SPECTRUM





3100

R D 3142
T D 3148



PEN SPACING CHECK

GAMMA RAY

COLLAR LOG

100% Bonding 0%

AMPLITUDE

CALIBRATION

0% Bonding →

← 100% Bonding

CALIBRATION SIGNAL

Span Adjust →

