

LEGEND:

- └─┘ = 90° SYMBOL  
● = PROPOSED WELLHEAD.  
◆ = LANDING POINT.  
○ = TARGET BOTTOM HOLE.  
▲ = SECTION CORNERS LOCATED. (NAD 83)

2011 Alum. Cap,  
#9954, 0.8' Below  
Ground  
Lat: 41.002061°  
Long: 104.390443°

2011 Alum. Cap,  
#9954, State Line  
Lat: 41.001661°  
Long: 104.390448°

2010 Alum. Cap,  
#28285, 0.5' Below  
Road Surface  
Lat: 40.987635°  
Long: 104.390644°

2012 Alum. Cap,  
#28285, 0.5' Below  
Road Surface  
Lat: 40.980528°  
Long: 104.390738°

2010 Alum. Cap,  
#17492, In Road  
Intersection  
Lat: 40.973422°  
Long: 104.390832°

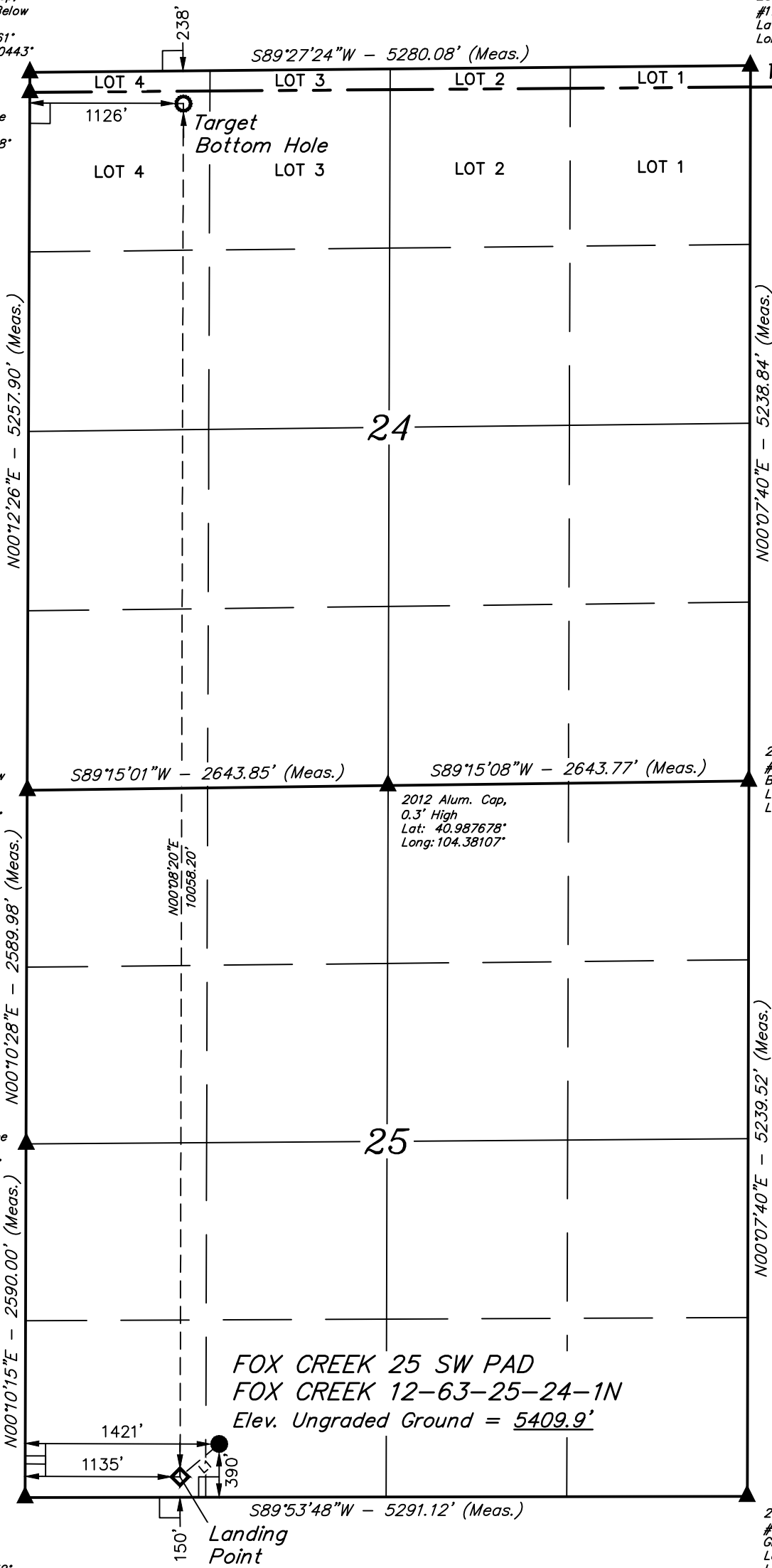
2009 Alum. Cap,  
#17492, 0.4' High  
Lat: 41.002096°  
Long: 104.371319°

Wyoming  
Colorado State Line

2010 Alum. Cap,  
#17492, 1.2' Below  
Ground  
Lat: 40.987721°  
Long: 104.371498°

2010 Alum. Cap,  
#17492, 0.7' Below  
Ground Surface  
Lat: 40.973345°  
Long: 104.371676°

T12N, R63W, 6th P.M.



LINE TABLE		
LINE	DIRECTION	LENGTH
L1	S49°59'11"W	374.04'

FOX CREEK 25 SW PAD  
FOX CREEK 12-63-25-24-1N  
Elev. Ungraded Ground = 5409.9'

PDOP = 1.6



NAD 83 (SURFACE LOCATION)	NAD 83 (LANDING POINT)	NAD 83 (TARGET BOTTOM HOLE)
LATITUDE = 40°58'28.10" (40.974472°)	LATITUDE = 40°58'25.74" (40.973817°)	LATITUDE = 41°00'05.09" (41.001415°)
LONGITUDE = 104°23'08.43" (104.385674°)	LONGITUDE = 104°23'12.18" (104.386717°)	LONGITUDE = 104°23'10.94" (104.386373°)
NAD 27 (SURFACE LOCATION)	NAD 27 (LANDING POINT)	NAD 27 (TARGET BOTTOM HOLE)
LATITUDE = 40°58'28.16" (40.974489°)	LATITUDE = 40°58'25.80" (40.973834°)	LATITUDE = 41°00'05.15" (41.001432°)
LONGITUDE = 104°23'06.58" (104.385162°)	LONGITUDE = 104°23'10.34" (104.386205°)	LONGITUDE = 104°23'09.10" (104.385861°)
STATE PLANE NAD 83 (CO. NORTH)	STATE PLANE NAD 83 (CO. NORTH)	STATE PLANE NAD 83 (CO. NORTH)
N: 1599788.73' E: 3307713.17'	N: 1599546.71' E: 3307428.10'	N: 1609602.62' E: 3307396.80'
STATE PLANE NAD 27 (CO. NORTH)	STATE PLANE NAD 27 (CO. NORTH)	STATE PLANE NAD 27 (CO. NORTH)
N: 599786.30' E: 2307862.64'	N: 599544.29' E: 2307577.57'	N: 609600.02' E: 2307546.33'

**BASIS OF BEARINGS**  
TRANSVERSE MERCATOR PROJECTION WITH  
A CENTRAL MERIDIAN OF W105°00'00".

**BASIS OF ELEVATION**  
OPUS SOLUTION GENERATED NAVD 88



UELS, LLC  
Corporate Office \* 85 South 200 East  
Vernal, UT 84078 \* (435) 789-1017



CERTIFICATE OF SURVEY  
THIS IS TO CERTIFY THAT THE ABOVE PLAT WAS PREPARED FROM FIELD  
NOTES OF ACTUAL SURVEYS MADE BY ME OR UNDER MY SUPERVISION,  
AND THAT THE SAME ARE TRUE AND CORRECT TO THE BEST OF MY  
KNOWLEDGE AND BELIEF.



REV: 1 10-17-18 S.S. (CORRECT WELL NAME)

**HIGHPOINT OPERATING CORPORATION**

**FOX CREEK 25 SW PAD**  
**FOX CREEK 12-63-25-24-1N**  
**SE 1/4 SW 1/4, SECTION 25, T12N, R63W, 6th P.M.**  
**WELD COUNTY, COLORADO**

SURVEYED BY	RYAN WILLIAMS	08-16-18	SCALE
DRAWN BY	A.P.	08-23-18	1" = 1000'

**WELL LOCATION PLAT**