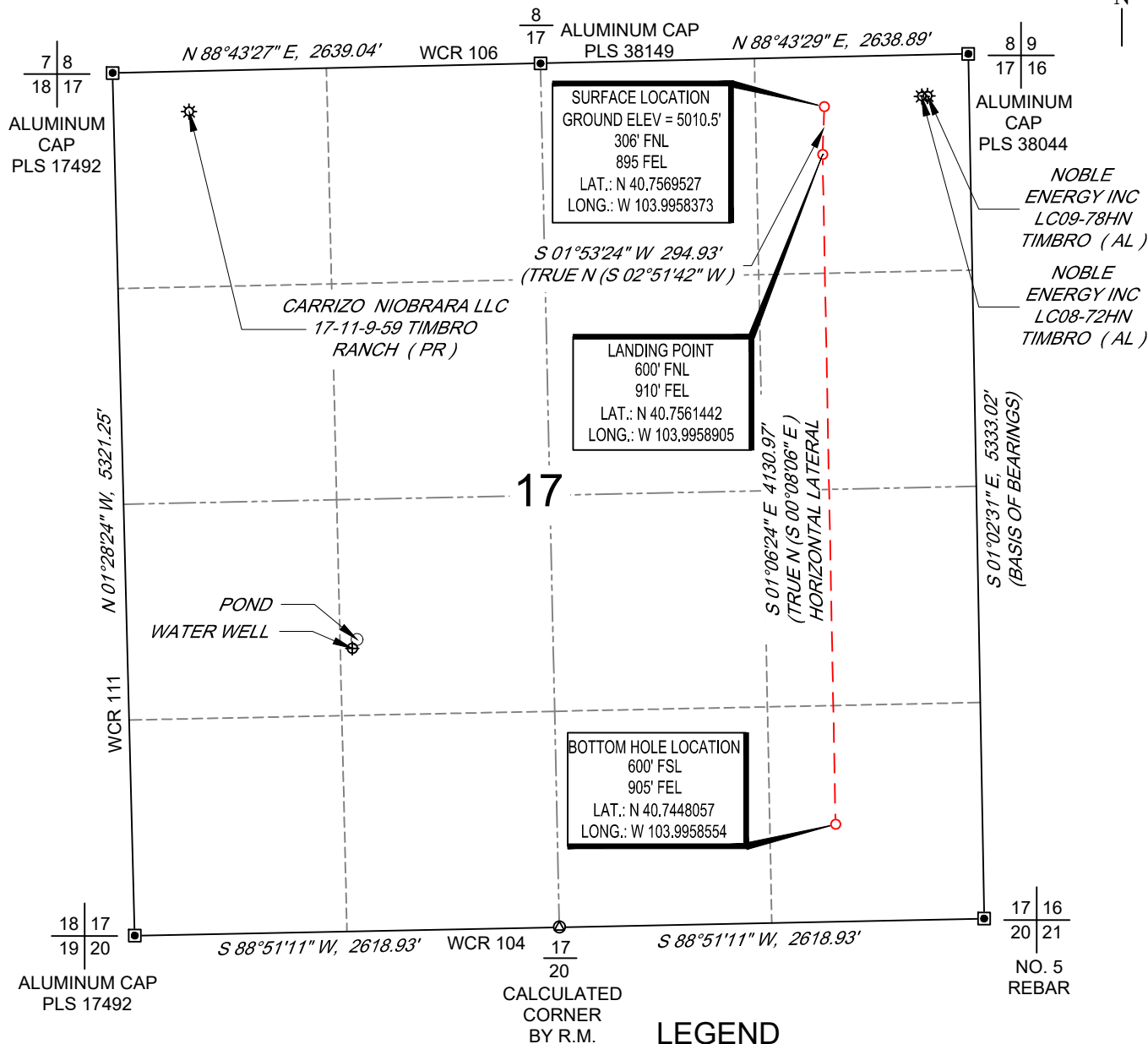


SCALE: 1" = 1000'
0' 500' 1000'

WELL LOCATION MAP

SHL NE/4 NE/4, SECTION 17, TOWNSHIP 9-N, RANGE 59-W
LP NE/4 NE/4, SECTION 17, TOWNSHIP 9-N, RANGE 59-W
BHL SE/4 SE/4, SECTION 17, TOWNSHIP 9-N, RANGE 59-W
WELD COUNTY, COLORADO



LEGEND

✱ WELLHEAD
⊕ WATER WELL

NOTES

1. Horizontal (NAD 83) and vertical (NAVD 88) datum is based on the Trimble VRS Network or OPUS Solution.
2. All directions, distances, and dimensions shown hereon are based on coordinates from the "Colorado coordinate system of 1983 north zone" (article 52 of title 38, C.R.S.).
3. All section line dimensions shown hereon are based on field measurements of existing monuments and/or physical evidence found in the field unless otherwise indicated.
4. Physical features shown hereon are for graphical representation only.
5. See Form 2A, if applicable for visible improvements within 500' of wellhead.
6. Distances to nearest section lines are measured perpendicularly.
7. This is not a land survey plat.

PDOP Reading: 1.5 Instrument Operator: **Brent Garcia**
Date Surveyed: **03/20/2018**

SURVEYOR'S STATEMENT

The undersigned hereby states that the well location shown hereon was staked on the ground based on existing monumentation and/or physical evidence found in the field and is correct to the best of my knowledge, information and belief.



VERDAD RESOURCES
TIMBRO 1717-13H
JOB NO: 116051

JLS	03/30/2018	REVISION:	
SHEET :	1 OF 1	INT	DATE
FILE:LO_TIMBRO_1717_13H			