

# **VERDAD RESOURCES**

**WATTENBERG FIELD**

**9N-59W-01 TIMBRO 0101 PAD**

**TIMBRO 0101-03H**

**Wellbore #1**

**Plan: Design #1**

## **Standard Planning Report**

**21 May, 2019**

Project: WATTENBERG FIELD  
Site: 9N-59W-01 TIMBRO 0101 PAD  
Well: TIMBRO 0101-03H  
Wellbore: Wellbore #1  
Design: Design #1

# VERDAD RESOURCES

## CASING DETAILS

TVD	MD	Name	Size
1700.00	1758.59	9 5/8"	9-5/8

## SECTION DETAILS

MD	Inc	Azi	TVD	+N/-S	+E/-W	Dleg	TFace	VSect	Target
0.00	0.00	0.00	0.00	0.00	0.00	0.00	0.00	0.00	
260.00	0.00	0.00	260.00	0.00	0.00	0.00	0.00	0.00	
1415.00	23.10	290.15	1383.96	79.12	-215.64	2.00	290.15	-82.54	
5754.04	23.10	290.15	5375.11	665.55	-1813.81	0.00	0.00	-694.28	
6844.11	90.00	179.09	6050.00	31.09	-2072.34	9.00	-109.51	-64.00	
11552.90	90.00	179.09	6050.00	-4677.10	-1997.16	0.00	0.00	4644.79	TIMBRO 0101-03H_BHL

## WELLBORE TARGET DETAILS (LAT/LONG)

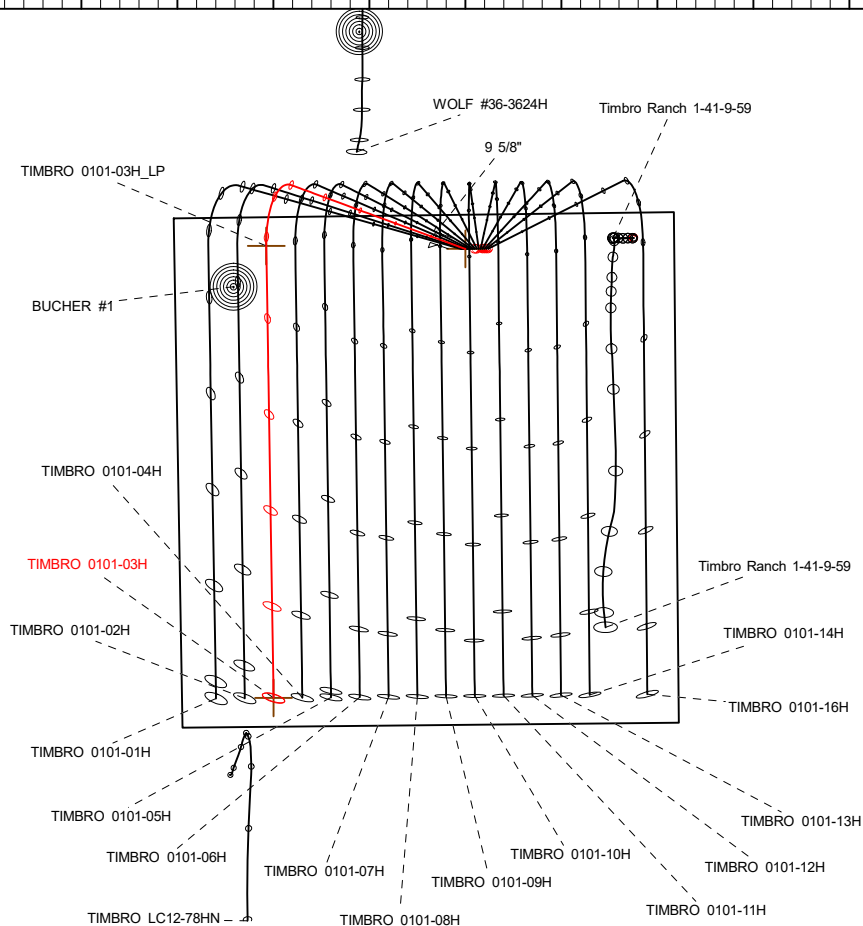
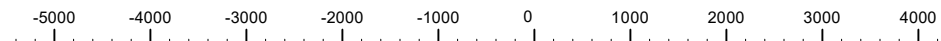
Name	TVD	+N/-S	+E/-W	Latitude	Longitude
TIMBRO 0101-03H_SHL	0.00	0.00	0.00	40.786475	-103.925181
TIMBRO 0101-03H_BHL	6050.00	-4677.10	-1997.16	40.773638	-103.932392

SHL  
356' FNL  
2177' FEL

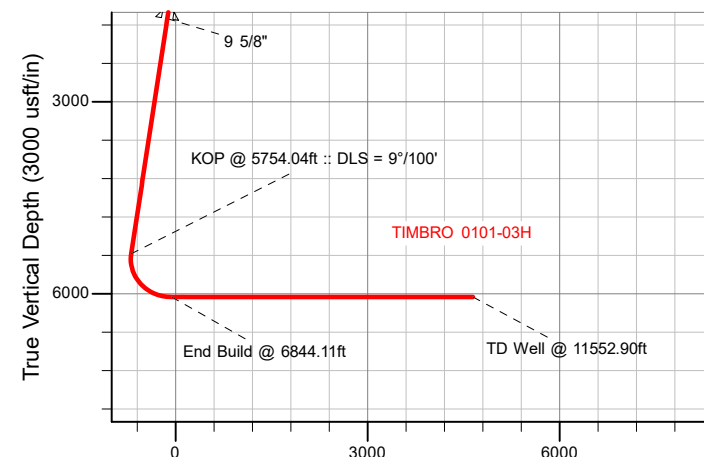
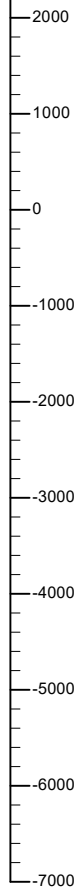
LP  
300' FNL  
955' FWL

BHL  
300' FSL  
950' FWL

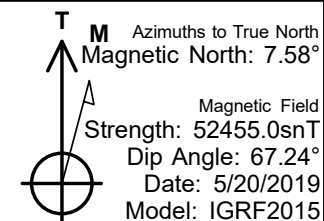
West(-)/East(+) (2000 usft/in)



South(-)/North(+) (2000 usft/in)



Vertical Section at 179.09° (3000 usft/in)



## WELL DETAILS: TIMBRO 0101-03H

GL = 4945'

RKB = 24' @ 4969.00usft (RIG)

Plan: Design #1 (TIMBRO 0101-03H/Wellbore #1)

Date: 5/21/2019

# Hewlett-Packard

## Planning Report

<b>Database:</b>	EDM 5000.14 Single User Db	<b>Local Co-ordinate Reference:</b>	Well TIMBRO 0101-03H
<b>Company:</b>	VERDAD RESOURCES	<b>TVD Reference:</b>	RKB = 24' @ 4969.00usft (RIG)
<b>Project:</b>	WATTENBERG FIELD	<b>MD Reference:</b>	RKB = 24' @ 4969.00usft (RIG)
<b>Site:</b>	9N-59W-01 TIMBRO 0101 PAD	<b>North Reference:</b>	True
<b>Well:</b>	TIMBRO 0101-03H	<b>Survey Calculation Method:</b>	Minimum Curvature
<b>Wellbore:</b>	Wellbore #1		
<b>Design:</b>	Design #1		

<b>Project</b>	WATTENBERG FIELD		
<b>Map System:</b>	US State Plane 1983	<b>System Datum:</b>	Mean Sea Level
<b>Geo Datum:</b>	North American Datum 1983		
<b>Map Zone:</b>	Colorado Northern Zone		

<b>Site</b>	9N-59W-01 TIMBRO 0101 PAD			
<b>Site Position:</b>		<b>Northing:</b>	1,533,230.40 usft	<b>Latitude:</b> 40.786474
<b>From:</b>	Lat/Long	<b>Easting:</b>	3,436,039.96 usft	<b>Longitude:</b> -103.925326
<b>Position Uncertainty:</b>	0.00 usft	<b>Slot Radius:</b>	13-3/16 "	<b>Grid Convergence:</b> 1.02 °

<b>Well</b>	TIMBRO 0101-03H			
<b>Well Position</b>	<b>+N/-S</b>	0.47 usft	<b>Northing:</b>	1,533,231.58 usft
	<b>+E/-W</b>	39.99 usft	<b>Easting:</b>	3,436,079.93 usft
<b>Position Uncertainty</b>	3.28 usft	<b>Wellhead Elevation:</b>		<b>Ground Level:</b> 4,945.00 usft

<b>Wellbore</b>	Wellbore #1				
<b>Magnetics</b>	<b>Model Name</b>	<b>Sample Date</b>	<b>Declination (°)</b>	<b>Dip Angle (°)</b>	<b>Field Strength (nT)</b>
	IGRF2015	5/20/2019	7.58	67.24	52,454.96246785

<b>Design</b>	Design #1			
<b>Audit Notes:</b>				
<b>Version:</b>	<b>Phase:</b>	PLAN	<b>Tie On Depth:</b>	0.00
<b>Vertical Section:</b>	<b>Depth From (TVD) (usft)</b>	<b>+N/-S (usft)</b>	<b>+E/-W (usft)</b>	<b>Direction (°)</b>
	0.00	0.00	0.00	179.09

<b>Plan Survey Tool Program</b>	<b>Date</b>	5/21/2019		
<b>Depth From (usft)</b>	<b>Depth To (usft)</b>	<b>Survey (Wellbore)</b>	<b>Tool Name</b>	<b>Remarks</b>
1	0.00	1,700.00	Design #1 (Wellbore #1)	ISCWSA REV 2 MWD Fixed:v2:standard declination
2	1,700.00	11,552.90	Design #1 (Wellbore #1)	ISCWSA REV 2 MWD Fixed:v2:standard declination

<b>Plan Sections</b>										
<b>Measured Depth (usft)</b>	<b>Inclination (°)</b>	<b>Azimuth (°)</b>	<b>Vertical Depth (usft)</b>	<b>+N/-S (usft)</b>	<b>+E/-W (usft)</b>	<b>Dogleg Rate (°/100usft)</b>	<b>Build Rate (°/100usft)</b>	<b>Turn Rate (°/100usft)</b>	<b>TFO (°)</b>	<b>Target</b>
0.00	0.00	0.00	0.00	0.00	0.00	0.00	0.00	0.00	0.00	
260.00	0.00	0.00	260.00	0.00	0.00	0.00	0.00	0.00	0.00	
1,415.00	23.10	290.15	1,383.96	79.12	-215.64	2.00	2.00	0.00	290.15	
5,754.04	23.10	290.15	5,375.11	665.55	-1,813.81	0.00	0.00	0.00	0.00	
6,844.11	90.00	179.09	6,050.00	31.09	-2,072.34	9.00	6.14	-10.19	-109.51	
11,552.90	90.00	179.09	6,050.00	-4,677.10	-1,997.16	0.00	0.00	0.00	0.00	TIMBRO 0101-03H_E

# Hewlett-Packard

## Planning Report

<b>Database:</b>	EDM 5000.14 Single User Db	<b>Local Co-ordinate Reference:</b>	Well TIMBRO 0101-03H
<b>Company:</b>	VERDAD RESOURCES	<b>TVD Reference:</b>	RKB = 24' @ 4969.00usft (RIG)
<b>Project:</b>	WATTENBERG FIELD	<b>MD Reference:</b>	RKB = 24' @ 4969.00usft (RIG)
<b>Site:</b>	9N-59W-01 TIMBRO 0101 PAD	<b>North Reference:</b>	True
<b>Well:</b>	TIMBRO 0101-03H	<b>Survey Calculation Method:</b>	Minimum Curvature
<b>Wellbore:</b>	Wellbore #1		
<b>Design:</b>	Design #1		

Planned Survey									
Measured Depth (usft)	Inclination (°)	Azimuth (°)	Vertical Depth (usft)	+N/-S (usft)	+E/-W (usft)	Vertical Section (usft)	Dogleg Rate (°/100usft)	Build Rate (°/100usft)	Turn Rate (°/100usft)
0.00	0.00	0.00	0.00	0.00	0.00	0.00	0.00	0.00	0.00
100.00	0.00	0.00	100.00	0.00	0.00	0.00	0.00	0.00	0.00
200.00	0.00	0.00	200.00	0.00	0.00	0.00	0.00	0.00	0.00
260.00	0.00	0.00	260.00	0.00	0.00	0.00	0.00	0.00	0.00
Begin Nudge @ 260.00ft									
300.00	0.80	290.15	300.00	0.10	-0.26	-0.10	2.00	2.00	0.00
400.00	2.80	290.15	399.94	1.18	-3.21	-1.23	2.00	2.00	0.00
500.00	4.80	290.15	499.72	3.46	-9.43	-3.61	2.00	2.00	0.00
600.00	6.80	290.15	599.20	6.94	-18.92	-7.24	2.00	2.00	0.00
700.00	8.80	290.15	698.27	11.62	-31.66	-12.12	2.00	2.00	0.00
800.00	10.80	290.15	796.81	17.48	-47.64	-18.23	2.00	2.00	0.00
900.00	12.80	290.15	894.69	24.52	-66.83	-25.58	2.00	2.00	0.00
1,000.00	14.80	290.15	991.80	32.74	-89.23	-34.15	2.00	2.00	0.00
1,100.00	16.80	290.15	1,088.02	42.12	-114.79	-43.94	2.00	2.00	0.00
1,200.00	18.80	290.15	1,183.22	52.65	-143.48	-54.92	2.00	2.00	0.00
1,300.00	20.80	290.15	1,277.31	64.32	-175.28	-67.09	2.00	2.00	0.00
1,400.00	22.80	290.15	1,370.15	77.11	-210.14	-80.44	2.00	2.00	0.00
1,415.00	23.10	290.15	1,383.96	79.12	-215.64	-82.54	2.00	2.00	0.00
Hold Tangent @ 1415.00ft									
1,500.00	23.10	290.15	1,462.15	90.61	-246.94	-94.52	0.00	0.00	0.00
1,600.00	23.10	290.15	1,554.13	104.13	-283.78	-108.62	0.00	0.00	0.00
1,700.00	23.10	290.15	1,646.11	117.64	-320.61	-122.72	0.00	0.00	0.00
1,758.59	23.10	290.15	1,700.00	125.56	-342.19	-130.98	0.00	0.00	0.00
9 5/8"									
1,800.00	23.10	290.15	1,738.09	131.16	-357.44	-136.82	0.00	0.00	0.00
1,900.00	23.10	290.15	1,830.08	144.67	-394.27	-150.92	0.00	0.00	0.00
2,000.00	23.10	290.15	1,922.06	158.19	-431.11	-165.02	0.00	0.00	0.00
2,100.00	23.10	290.15	2,014.04	171.70	-467.94	-179.11	0.00	0.00	0.00
2,200.00	23.10	290.15	2,106.02	185.22	-504.77	-193.21	0.00	0.00	0.00
2,300.00	23.10	290.15	2,198.01	198.73	-541.60	-207.31	0.00	0.00	0.00
2,400.00	23.10	290.15	2,289.99	212.25	-578.43	-221.41	0.00	0.00	0.00
2,500.00	23.10	290.15	2,381.97	225.76	-615.27	-235.51	0.00	0.00	0.00
2,600.00	23.10	290.15	2,473.95	239.28	-652.10	-249.61	0.00	0.00	0.00
2,700.00	23.10	290.15	2,565.93	252.80	-688.93	-263.70	0.00	0.00	0.00
2,800.00	23.10	290.15	2,657.92	266.31	-725.76	-277.80	0.00	0.00	0.00
2,900.00	23.10	290.15	2,749.90	279.83	-762.60	-291.90	0.00	0.00	0.00
3,000.00	23.10	290.15	2,841.88	293.34	-799.43	-306.00	0.00	0.00	0.00
3,100.00	23.10	290.15	2,933.86	306.86	-836.26	-320.10	0.00	0.00	0.00
3,200.00	23.10	290.15	3,025.84	320.37	-873.09	-334.20	0.00	0.00	0.00
3,300.00	23.10	290.15	3,117.83	333.89	-909.93	-348.30	0.00	0.00	0.00
3,400.00	23.10	290.15	3,209.81	347.40	-946.76	-362.39	0.00	0.00	0.00
3,500.00	23.10	290.15	3,301.79	360.92	-983.59	-376.49	0.00	0.00	0.00
3,600.00	23.10	290.15	3,393.77	374.43	-1,020.42	-390.59	0.00	0.00	0.00
3,700.00	23.10	290.15	3,485.76	387.95	-1,057.26	-404.69	0.00	0.00	0.00
3,800.00	23.10	290.15	3,577.74	401.46	-1,094.09	-418.79	0.00	0.00	0.00
3,900.00	23.10	290.15	3,669.72	414.98	-1,130.92	-432.89	0.00	0.00	0.00
4,000.00	23.10	290.15	3,761.70	428.49	-1,167.75	-446.98	0.00	0.00	0.00
4,100.00	23.10	290.15	3,853.68	442.01	-1,204.59	-461.08	0.00	0.00	0.00
4,200.00	23.10	290.15	3,945.67	455.52	-1,241.42	-475.18	0.00	0.00	0.00
4,300.00	23.10	290.15	4,037.65	469.04	-1,278.25	-489.28	0.00	0.00	0.00
4,400.00	23.10	290.15	4,129.63	482.55	-1,315.08	-503.38	0.00	0.00	0.00
4,500.00	23.10	290.15	4,221.61	496.07	-1,351.91	-517.48	0.00	0.00	0.00
4,600.00	23.10	290.15	4,313.59	509.58	-1,388.75	-531.58	0.00	0.00	0.00

# Hewlett-Packard

## Planning Report

<b>Database:</b>	EDM 5000.14 Single User Db	<b>Local Co-ordinate Reference:</b>	Well TIMBRO 0101-03H
<b>Company:</b>	VERDAD RESOURCES	<b>TVD Reference:</b>	RKB = 24' @ 4969.00usft (RIG)
<b>Project:</b>	WATTENBERG FIELD	<b>MD Reference:</b>	RKB = 24' @ 4969.00usft (RIG)
<b>Site:</b>	9N-59W-01 TIMBRO 0101 PAD	<b>North Reference:</b>	True
<b>Well:</b>	TIMBRO 0101-03H	<b>Survey Calculation Method:</b>	Minimum Curvature
<b>Wellbore:</b>	Wellbore #1		
<b>Design:</b>	Design #1		

Planned Survey									
Measured Depth (usft)	Inclination (°)	Azimuth (°)	Vertical Depth (usft)	+N/-S (usft)	+E/-W (usft)	Vertical Section (usft)	Dogleg Rate (°/100usft)	Build Rate (°/100usft)	Turn Rate (°/100usft)
4,700.00	23.10	290.15	4,405.58	523.10	-1,425.58	-545.67	0.00	0.00	0.00
4,800.00	23.10	290.15	4,497.56	536.61	-1,462.41	-559.77	0.00	0.00	0.00
4,900.00	23.10	290.15	4,589.54	550.13	-1,499.24	-573.87	0.00	0.00	0.00
5,000.00	23.10	290.15	4,681.52	563.64	-1,536.08	-587.97	0.00	0.00	0.00
5,100.00	23.10	290.15	4,773.51	577.16	-1,572.91	-602.07	0.00	0.00	0.00
5,200.00	23.10	290.15	4,865.49	590.68	-1,609.74	-616.17	0.00	0.00	0.00
5,300.00	23.10	290.15	4,957.47	604.19	-1,646.57	-630.26	0.00	0.00	0.00
5,400.00	23.10	290.15	5,049.45	617.71	-1,683.41	-644.36	0.00	0.00	0.00
5,500.00	23.10	290.15	5,141.43	631.22	-1,720.24	-658.46	0.00	0.00	0.00
5,600.00	23.10	290.15	5,233.42	644.74	-1,757.07	-672.56	0.00	0.00	0.00
5,700.00	23.10	290.15	5,325.40	658.25	-1,793.90	-686.66	0.00	0.00	0.00
5,754.04	23.10	290.15	5,375.11	665.55	-1,813.81	-694.28	0.00	0.00	0.00
KOP @ 5754.04ft :: DLS = 9°/100'									
5,800.00	22.05	279.71	5,417.56	670.12	-1,830.78	-699.11	9.00	-2.29	-22.71
5,900.00	22.25	255.70	5,510.37	668.60	-1,867.70	-698.18	9.00	0.20	-24.02
6,000.00	25.66	235.04	5,601.91	651.49	-1,903.87	-681.64	9.00	3.41	-20.66
6,100.00	31.23	220.11	5,689.91	619.18	-1,938.39	-649.89	9.00	5.58	-14.93
6,200.00	38.03	209.67	5,772.22	572.49	-1,970.40	-603.71	9.00	6.80	-10.43
6,300.00	45.50	202.11	5,846.80	512.56	-1,999.14	-544.25	9.00	7.47	-7.56
6,400.00	53.36	196.31	5,911.82	440.87	-2,023.88	-472.96	9.00	7.85	-5.80
6,500.00	61.44	191.60	5,965.68	359.18	-2,044.01	-391.60	9.00	8.08	-4.71
6,600.00	69.66	187.57	6,007.05	269.51	-2,059.05	-302.17	9.00	8.22	-4.03
6,700.00	77.96	183.95	6,034.91	174.05	-2,068.62	-206.88	9.00	8.30	-3.62
6,800.00	86.31	180.56	6,048.58	75.17	-2,072.48	-108.07	9.00	8.35	-3.40
6,844.11	90.00	179.09	6,050.00	31.09	-2,072.34	-64.00	9.00	8.36	-3.33
End Build @ 6844.11ft									
6,900.00	90.00	179.09	6,050.00	-24.79	-2,071.45	-8.11	0.00	0.00	0.00
7,000.00	90.00	179.09	6,050.00	-124.78	-2,069.85	91.89	0.00	0.00	0.00
7,100.00	90.00	179.09	6,050.00	-224.77	-2,068.26	191.89	0.00	0.00	0.00
7,200.00	90.00	179.09	6,050.00	-324.75	-2,066.66	291.89	0.00	0.00	0.00
7,300.00	90.00	179.09	6,050.00	-424.74	-2,065.06	391.89	0.00	0.00	0.00
7,400.00	90.00	179.09	6,050.00	-524.73	-2,063.47	491.89	0.00	0.00	0.00
7,500.00	90.00	179.09	6,050.00	-624.72	-2,061.87	591.89	0.00	0.00	0.00
7,600.00	90.00	179.09	6,050.00	-724.70	-2,060.27	691.89	0.00	0.00	0.00
7,700.00	90.00	179.09	6,050.00	-824.69	-2,058.68	791.89	0.00	0.00	0.00
7,800.00	90.00	179.09	6,050.00	-924.68	-2,057.08	891.89	0.00	0.00	0.00
7,900.00	90.00	179.09	6,050.00	-1,024.66	-2,055.48	991.89	0.00	0.00	0.00
8,000.00	90.00	179.09	6,050.00	-1,124.65	-2,053.89	1,091.89	0.00	0.00	0.00
8,100.00	90.00	179.09	6,050.00	-1,224.64	-2,052.29	1,191.89	0.00	0.00	0.00
8,200.00	90.00	179.09	6,050.00	-1,324.63	-2,050.69	1,291.89	0.00	0.00	0.00
8,300.00	90.00	179.09	6,050.00	-1,424.61	-2,049.10	1,391.89	0.00	0.00	0.00
8,400.00	90.00	179.09	6,050.00	-1,524.60	-2,047.50	1,491.89	0.00	0.00	0.00
8,500.00	90.00	179.09	6,050.00	-1,624.59	-2,045.90	1,591.89	0.00	0.00	0.00
8,600.00	90.00	179.09	6,050.00	-1,724.58	-2,044.31	1,691.89	0.00	0.00	0.00
8,700.00	90.00	179.09	6,050.00	-1,824.56	-2,042.71	1,791.89	0.00	0.00	0.00
8,800.00	90.00	179.09	6,050.00	-1,924.55	-2,041.11	1,891.89	0.00	0.00	0.00
8,900.00	90.00	179.09	6,050.00	-2,024.54	-2,039.52	1,991.89	0.00	0.00	0.00
9,000.00	90.00	179.09	6,050.00	-2,124.52	-2,037.92	2,091.89	0.00	0.00	0.00
9,100.00	90.00	179.09	6,050.00	-2,224.51	-2,036.32	2,191.89	0.00	0.00	0.00
9,200.00	90.00	179.09	6,050.00	-2,324.50	-2,034.73	2,291.89	0.00	0.00	0.00
9,300.00	90.00	179.09	6,050.00	-2,424.49	-2,033.13	2,391.89	0.00	0.00	0.00
9,400.00	90.00	179.09	6,050.00	-2,524.47	-2,031.53	2,491.89	0.00	0.00	0.00
9,500.00	90.00	179.09	6,050.00	-2,624.46	-2,029.94	2,591.89	0.00	0.00	0.00
9,600.00	90.00	179.09	6,050.00	-2,724.45	-2,028.34	2,691.89	0.00	0.00	0.00

# Hewlett-Packard

## Planning Report

<b>Database:</b>	EDM 5000.14 Single User Db	<b>Local Co-ordinate Reference:</b>	Well TIMBRO 0101-03H
<b>Company:</b>	VERDAD RESOURCES	<b>TVD Reference:</b>	RKB = 24' @ 4969.00usft (RIG)
<b>Project:</b>	WATTENBERG FIELD	<b>MD Reference:</b>	RKB = 24' @ 4969.00usft (RIG)
<b>Site:</b>	9N-59W-01 TIMBRO 0101 PAD	<b>North Reference:</b>	True
<b>Well:</b>	TIMBRO 0101-03H	<b>Survey Calculation Method:</b>	Minimum Curvature
<b>Wellbore:</b>	Wellbore #1		
<b>Design:</b>	Design #1		

Planned Survey										
Measured Depth (usft)	Inclination (°)	Azimuth (°)	Vertical Depth (usft)	+N/-S (usft)	+E/-W (usft)	Vertical Section (usft)	Dogleg Rate (°/100usft)	Build Rate (°/100usft)	Turn Rate (°/100usft)	
9,700.00	90.00	179.09	6,050.00	-2,824.43	-2,026.74	2,791.89	0.00	0.00	0.00	
9,800.00	90.00	179.09	6,050.00	-2,924.42	-2,025.15	2,891.89	0.00	0.00	0.00	
9,900.00	90.00	179.09	6,050.00	-3,024.41	-2,023.55	2,991.89	0.00	0.00	0.00	
10,000.00	90.00	179.09	6,050.00	-3,124.40	-2,021.95	3,091.89	0.00	0.00	0.00	
10,100.00	90.00	179.09	6,050.00	-3,224.38	-2,020.36	3,191.89	0.00	0.00	0.00	
10,200.00	90.00	179.09	6,050.00	-3,324.37	-2,018.76	3,291.89	0.00	0.00	0.00	
10,300.00	90.00	179.09	6,050.00	-3,424.36	-2,017.16	3,391.89	0.00	0.00	0.00	
10,400.00	90.00	179.09	6,050.00	-3,524.35	-2,015.57	3,491.89	0.00	0.00	0.00	
10,500.00	90.00	179.09	6,050.00	-3,624.33	-2,013.97	3,591.89	0.00	0.00	0.00	
10,600.00	90.00	179.09	6,050.00	-3,724.32	-2,012.37	3,691.89	0.00	0.00	0.00	
10,700.00	90.00	179.09	6,050.00	-3,824.31	-2,010.78	3,791.89	0.00	0.00	0.00	
10,800.00	90.00	179.09	6,050.00	-3,924.29	-2,009.18	3,891.89	0.00	0.00	0.00	
10,900.00	90.00	179.09	6,050.00	-4,024.28	-2,007.58	3,991.89	0.00	0.00	0.00	
11,000.00	90.00	179.09	6,050.00	-4,124.27	-2,005.99	4,091.89	0.00	0.00	0.00	
11,100.00	90.00	179.09	6,050.00	-4,224.26	-2,004.39	4,191.89	0.00	0.00	0.00	
11,200.00	90.00	179.09	6,050.00	-4,324.24	-2,002.79	4,291.89	0.00	0.00	0.00	
11,300.00	90.00	179.09	6,050.00	-4,424.23	-2,001.20	4,391.89	0.00	0.00	0.00	
11,400.00	90.00	179.09	6,050.00	-4,524.22	-1,999.60	4,491.89	0.00	0.00	0.00	
11,500.00	90.00	179.09	6,050.00	-4,624.21	-1,998.00	4,591.89	0.00	0.00	0.00	
11,552.90	90.00	179.09	6,050.00	-4,677.10	-1,997.16	4,644.79	0.00	0.00	0.00	
TD Well @ 11552.90ft										

Casing Points					
Measured Depth (usft)	Vertical Depth (usft)	Name	Casing Diameter (")	Hole Diameter (")	
1,758.59	1,700.00	9 5/8"	9-5/8	13-1/2	

Plan Annotations					
Measured Depth (usft)	Vertical Depth (usft)	Local Coordinates			
		+N/-S (usft)	+E/-W (usft)	Comment	
260.00	260.00	0.00	0.00	Begin Nudge @ 260.00ft	
1,415.00	1,383.96	79.12	-215.64	Hold Tangent @ 1415.00ft	
5,754.04	5,375.11	665.55	-1,813.81	KOP @ 5754.04ft :: DLS = 9°/100'	
6,844.11	6,050.00	31.09	-2,072.34	End Build @ 6844.11ft	
11,552.90	6,050.00	-4,677.10	-1,997.16	TD Well @ 11552.90ft	