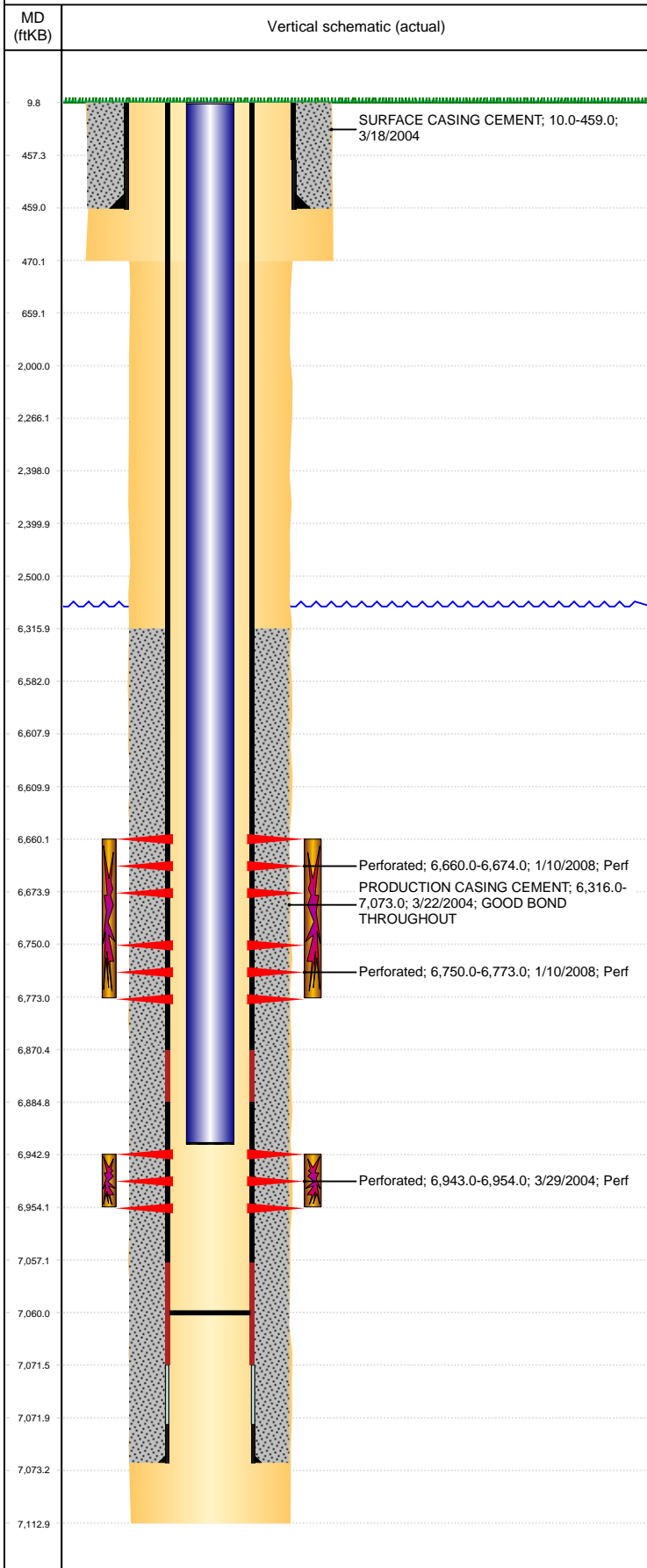


Well Name: WILMOTH C05-06

VERTICAL, ORIGINAL HOLE, 7/18/2019 1:11:05 PM



Well Header									
API 05-123-22051		Business Unit DJ BASIN			District 15		Well Config VERTICAL		
KB - GL / MSL (ft... 10.00		Spud Date 3/18/2004		P & A Date		Well Production Status PR			SoRT No
Comment 2008' TBG STRING - UNCLEAR AS TO WHAT WAS REALLY RAN IN THE HOLE - KEPT WHAT THE FIELD ENTERED DURING THE NIO RECOMPLETE.									
Surface Location (Congressional)									
Qtr 3 SE	Qtr 4 NW	Section 5	Twنشp 4	Twنشp... N	Range 64	Rng E... W	Actual Latitude (°) 40.34316425	Actual Longitude (°) -104.57656831	
Wellbore Sections									
Section Des			Size (in)			Act Top, MD (ftKB)		Act Btm, MD (ftKB)	
Surface			12 1/4			10		470	
Production			7 7/8			470		7,113	
Casing Strings									
Csg Des			Run Date		OD (in)	Wt/Len (lb/ft)	Grade	Top, MD (ftKB)	MD (ftKB)
Surface			3/18/2004		8 5/8	24.00	J-55	10.0	459.0
Production			3/22/2004		4 1/2	11.60	M-80	10.0	7,073.0
Cement									
Des					Start Date		Top (ftKB)		Btm (ftKB)
SURFACE CASING CEMENT					3/18/2004		10.0		459.0
PRODUCTION CASING CEMENT					3/22/2004		6,316.0		7,073.0
Zone Statuses									
Zone Name		Status Date	Status	Fluid Type	Job				Prod Method
CODELL		1/9/2008	SI		RECOMPLETION, 1/8/2008 06:00				
CODELL		3/4/2008	PR	Gas	RECOMPLETION, 1/8/2008 06:00				
NIOBRARA		1/26/2008	PR	Gas	RECOMPLETION, 1/8/2008 06:00				
NIOBRARA		3/4/2008	PR	Gas	RECOMPLETION, 1/8/2008 06:00				
Perforation Data									
Linked Zone			Bnch/Stg	Entered Shot Total	Top (ftKB)		Btm (ftKB)		Date
NIOBRARA, ORIGINAL HOLE			A	56	6,660.00		6,674.00		1/10/2008
NIOBRARA, ORIGINAL HOLE			B	92	6,750.00		6,773.00		1/10/2008
CODELL, ORIGINAL HOLE				44	6,943.00		6,954.00		3/29/2004
Stimulation Intervals									
Zone					Start Date		Top (ftKB)		Btm (ftKB)
NIOBRARA, ORIGINAL HOLE					1/23/2008		6,660.0		6,773.0
CODELL, ORIGINAL HOLE					4/2/2004		6,943.0		6,954.0
Other In Hole									
Run Date		Des				OD (in)	Top (ftKB)		Btm (ftKB)
4/16/2018		Plunger Lift				1 7/8			
Logs									
Date		Type					Top, MD (ftKB)		Btm, MD (ftKB)
3/22/2004		COMPENSATED DENSITY					459.0		7,075.0
3/22/2004		INDUCTION					459.0		7,095.0
3/29/2004		CBL/CCL/GR					6,180.0		7,046.0
6/10/2016		GYRO					0.0		6,850.0
Plug Back Total Depths									
Date		Type			Com				Depth (ftKB)
1/9/2008		SAND PLUG			C/O SAND PLUG TO 6823' AND ROLL HOLE CLEAN.				6,823.0
2/26/2008		FILL			CLEAN OUT SAND PLUG				7,060.0