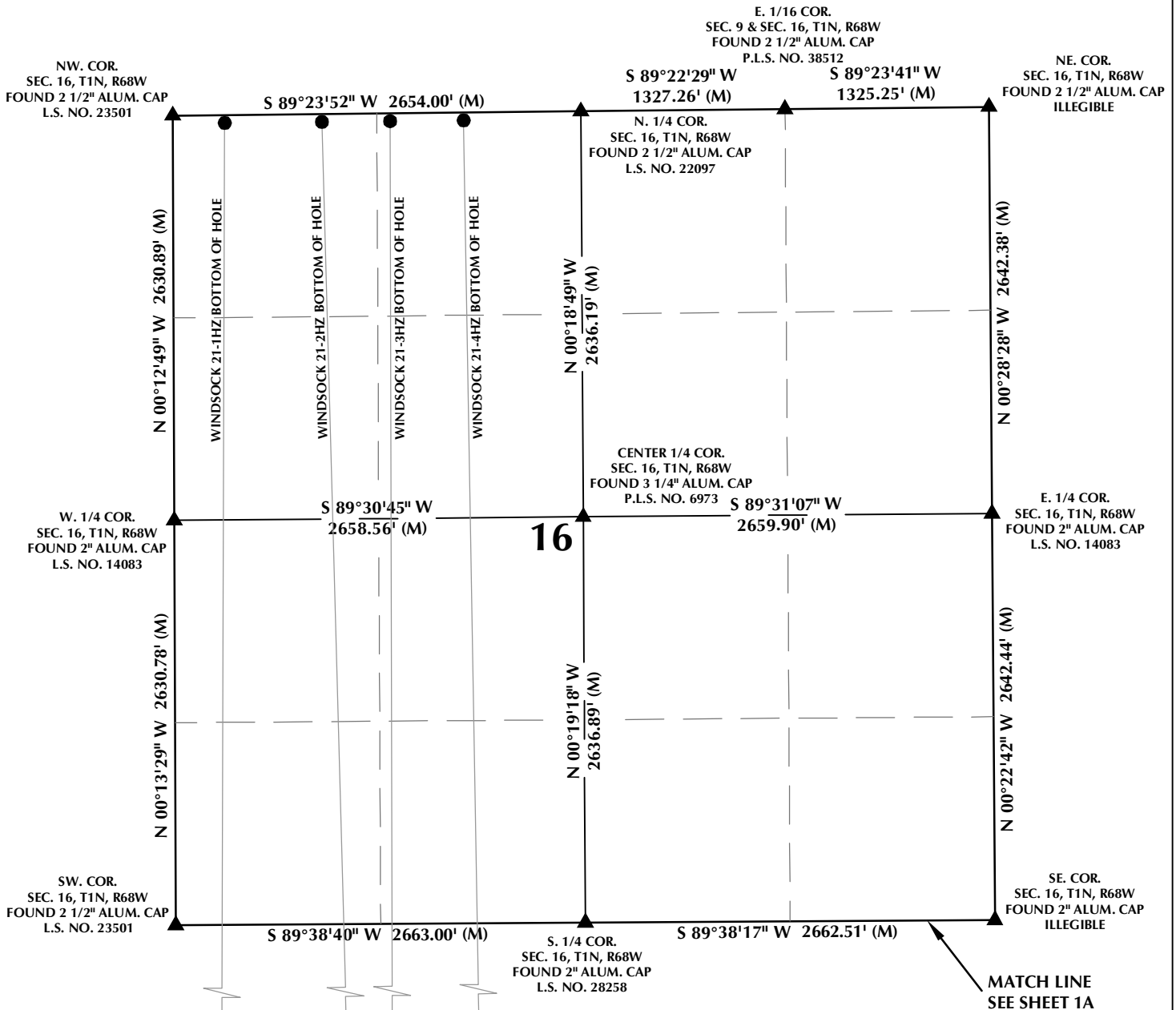


\\ANADARKO\2015\2015 64 DEARMIN T1N R68W 21\PLATS\WINDSOCK\WINDSOCK 15-21HZ MW.dwg, 3/12/2019 10:22:50 AM, Randy

MULTI-WELL PLAN SECTION 16, T1N, R68W



WELL NOTES:

WINDSOCK 21-1HZ
SURFACE: 370' FSL, 2374' FEL (SEC. 21)
BOTTOM HOLE: 50' FNL, 337' FWL (SEC. 16)

WINDSOCK 21-2HZ
SURFACE: 359' FSL, 2364' FEL (SEC. 21)
BOTTOM HOLE: 50' FNL, 969' FWL (SEC. 16)

WINDSOCK 21-3HZ
SURFACE: 349' FSL, 2353' FEL (SEC. 21)
BOTTOM HOLE: 50' FNL, 1413' FWL (SEC. 16)

WINDSOCK 21-4HZ
SURFACE: 338' FSL, 2343' FEL (SEC. 21)
BOTTOM HOLE: 50' FNL, 1891' FWL (SEC. 16)

WINDSOCK 21-5HZ
SURFACE: 327' FSL, 2332' FEL (SEC. 21)
BOTTOM HOLE: 50' FNL, 2470' FWL (SEC. 21)

WINDSOCK 21-6HZ
SURFACE: 316' FSL, 2322' FEL (SEC. 21)
BOTTOM HOLE: 50' FNL, 2412' FEL (SEC. 21)

WINDSOCK 21-7HZ
SURFACE: 306' FSL, 2311' FEL (SEC. 21)
BOTTOM HOLE: 50' FNL, 1938' FEL (SEC. 21)

WINDSOCK 21-8HZ
SURFACE: 295' FSL, 2301' FEL (SEC. 21)
BOTTOM HOLE: 90' FNL, 248' FEL (SEC. 21)

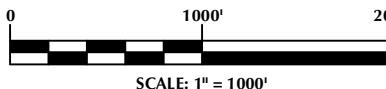
WINDSOCK 21-9HZ
SURFACE: 284' FSL, 2290' FEL (SEC. 21)
BOTTOM HOLE: 50' FNL, 1586' FEL (SEC. 21)

WINDSOCK 21-10HZ
SURFACE: 274' FSL, 2280' FEL (SEC. 21)
BOTTOM HOLE: 70' FNL, 670' FEL (SEC. 21)

WINDSOCK 21-11HZ
SURFACE: 263' FSL, 2269' FEL (SEC. 21)
BOTTOM HOLE: 55' FNL, 1083' FEL (SEC. 21)

NOTES:

- ▲ INDICATES SECTION CORNER.
- INDICATES CALCULATED CORNER.
- BASIS OF BEARING DERIVED FROM COLORADO COORDINATE SYSTEM OF 1983 NORTH ZONE.
- ALL MEASURED DISTANCES ARE GRID.
- COMBINED SCALE FACTOR: .99971980 CALCULATED FROM THE NW CORNER OF SECTION 21, T1N, R68W.
- WELL FOOTAGES ARE MEASURED AT RIGHT ANGLES TO THE SECTION LINES.



WELL PAD - WINDSOCK 15-21HZ

MULTI-WELL PLAN
WINDSOCK 21-1HZ,
WINDSOCK 21-2HZ, WINDSOCK 21-3HZ,
WINDSOCK 21-4HZ, WINDSOCK 21-5HZ,
WINDSOCK 21-6HZ, WINDSOCK 21-7HZ,
WINDSOCK 21-8HZ, WINDSOCK 21-9HZ,
WINDSOCK 21-10HZ & WINDSOCK 21-11HZ
LOCATED IN SECTIONS 16, 21 & 28
T1N, R68W, 6TH P.M.
WELD COUNTY, COLORADO

**Kerr-McGee Oil &
Gas Onshore L.P.**
1099 18th Street
Denver, Colorado 80202



CONSULTING, LLC

SHERIDAN OFFICE
1095 Saberton Avenue
Sheridan, Wyoming 82801
Phone 307-674-0609

LOVELAND OFFICE
6706 North Franklin Avenue
Loveland, Colorado 80538
Phone 970-776-4331

DRAFTED BY:	LMO	CHECKED BY:	RKF	SHEET NO:
DATE DRAFTED:	3/12/19	DATE SURVEYED:	11/14/18	1B
REVISED:		FILE NAME:	15-64	1B OF 1