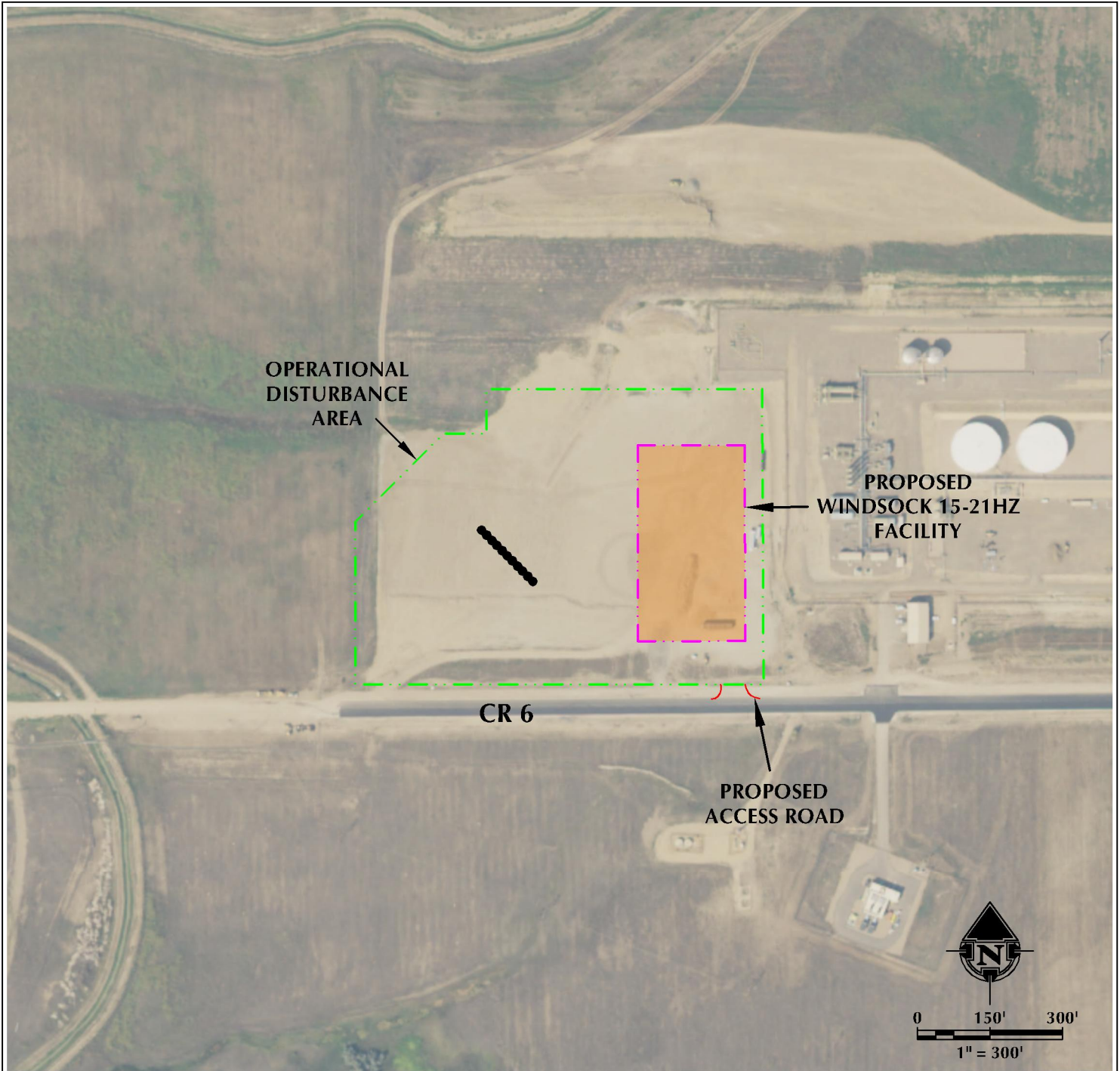


WINDSOCK 15-21HZ ACCESS MAP

SW1/4 SE1/4 SECTION 21, TOWNSHIP 1 NORTH, RANGE 68 WEST, 6TH P.M.



LEGEND

- PROPOSED WELL
- ACCESS
- PROPOSED FACILITY
- DISTURBANCE AREA

INTERSECTION OF
ACCESS ROAD AND CR 6

LATITUDE: 40.029418°

LONGITUDE: -105.005742°



609 CONSULTING, LLC
LOVELAND OFFICE
6706 North Franklin Avenue
Loveland, Colorado 80538
Phone: 970-776-4331

SHERIDAN OFFICE
1095 Saberton Avenue
Sheridan, Wyoming 82801
Phone: 307-674-0609

DATE SURVEYED: 11/14/18
DATE: 3/12/19
DRAFTER: DJD
REVISED:

DATA SOURCES:
- AERIAL COURTESY OF ESRI, INC.

PREPARED FOR:
Kerr-McGee Oil & Gas Onshore L.P.