

Inspection Photos

Loc#439603

Operator: Sandridge

Inspection Number: 692401145

Inspection Date: 6/27/19



COLORADO
Oil & Gas Conservation
Commission
Department of Natural Resources



Photo#1:
View to North over most recent expansion of
Location.



Photo#2:
View from recent expansion to South

June 27, 2019



Inspection Photos: Sandridge Gregory Loc#439603



Photo#3:
Weir retaining stormwater at north end of site.



Photo#4:
Unconsolidated stockpile with no BMPs employed.

June 27, 2019



COLORADO
Oil & Gas Conservation
Commission
Department of Natural Resources

Inspection Photos: Sandridge Gregory Loc#439603



Photo#5:
No sediment controls at culvert installation.



Photo#6:
No sediment controls at culvert installation.

June 27, 2019



Photo#7:
Silt fence failed.



Photo#8:
Silt fence failing.

June 27, 2019

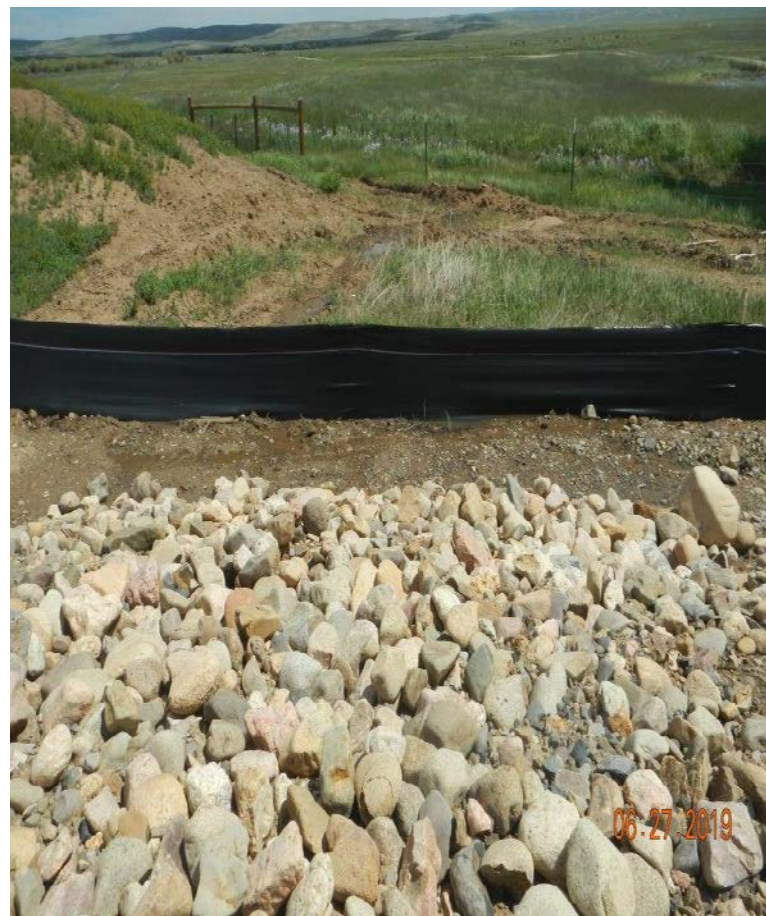


COLORADO
Oil & Gas Conservation
Commission
Department of Natural Resources

Inspection Photos: Sandridge Gregory Loc#439603



Photo#9:
View over Weir at North end of site into Location.



Photo#10:
View over top of Weir to outside of Location; where stormwater would discharge into silt fence; no outlet.

June 27, 2019



COLORADO
Oil & Gas Conservation
Commission
Department of Natural Resources

Inspection Photos: Sandridge Gregory Loc#439603



Photo#11:
Weir at South end of site.



Photo#12:
View to discharge area of South weir. Note no
perimeter control, sediment run-off.

June 27, 2019



COLORADO
Oil & Gas Conservation
Commission
Department of Natural Resources

Inspection Photos: Sandridge Gregory Loc#439603



Photo#13:
Ponding and degradation of site.



Photo#14:
Stormwater ponding shown in Photo #13,
weir(Photo#11) position indicated with arrow.

June 27, 2019



Photo#15:
Berms are weedy & would benefit from Interim Reclamation.

June 27, 2019



Photo#16:
Berms are weedy & would benefit from Interim Reclamation.