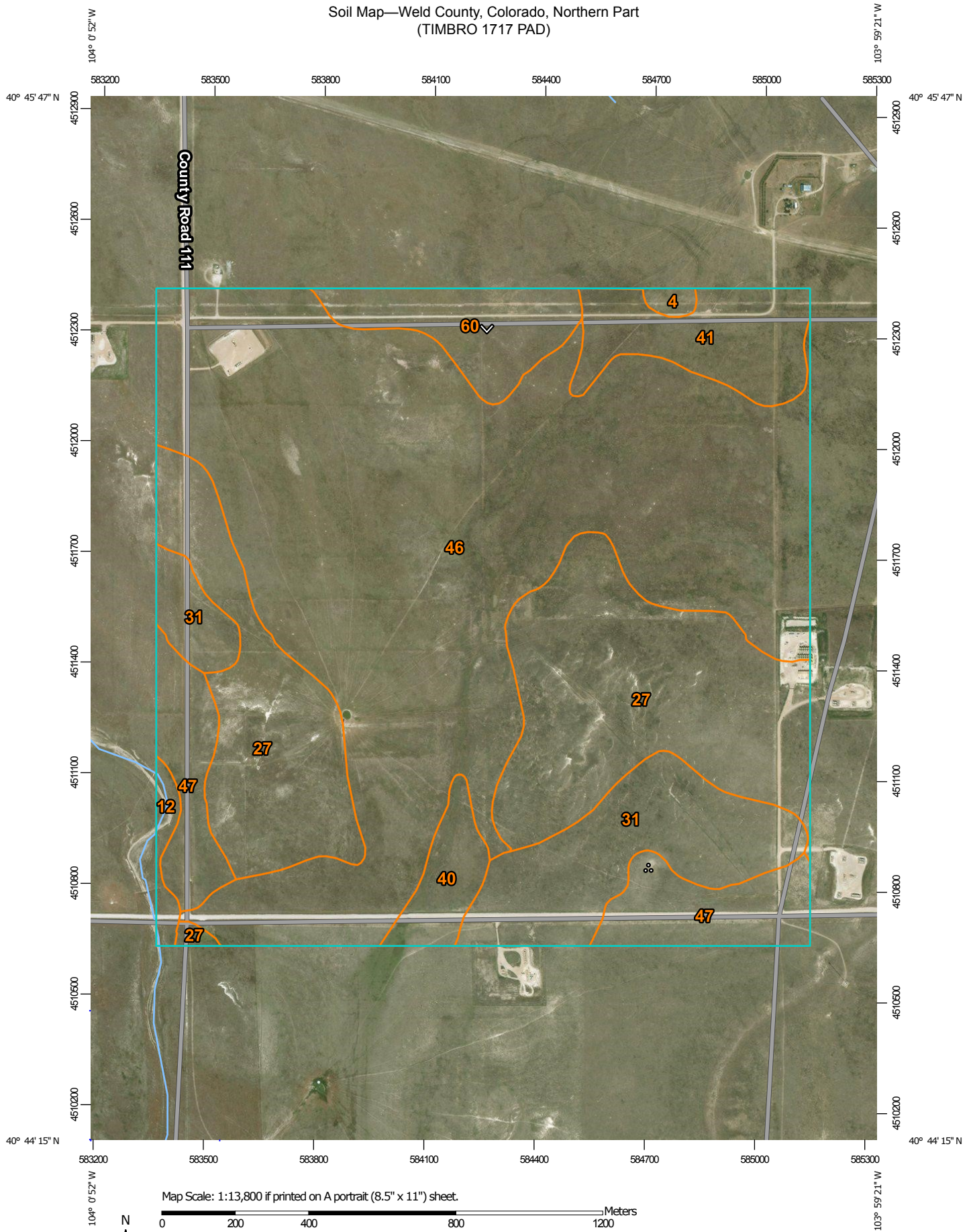


# Soil Map—Weld County, Colorado, Northern Part (TIMBRO 1717 PAD)



Map Scale: 1:13,800 if printed on A portrait (8.5" x 11") sheet.



Map projection: Web Mercator Corner coordinates: WGS84 Edge tics: UTM Zone 13N WGS84



**Natural Resources  
Conservation Service**

Web Soil Survey  
National Cooperative Soil Survey

5/15/2018  
Page 1 of 3

## Map Unit Legend

Map Unit Symbol	Map Unit Name	Acres in AOI	Percent of AOI
4	Ascalon fine sandy loam, 0 to 6 percent slopes	2.4	0.3%
12	Bankard loamy fine sand, 0 to 3 percent slopes	5.6	0.7%
27	Epping silt loam, 0 to 9 percent slopes	180.0	22.9%
31	Kim-Mitchell complex, 0 to 6 percent slopes	71.0	9.0%
40	Nunn loam, 0 to 6 percent slopes	15.7	2.0%
41	Nunn clay loam, 0 to 6 percent slopes	35.4	4.5%
46	Otero sandy loam, 0 to 3 percent slopes	396.5	50.4%
47	Otero sandy loam, 3 to 9 percent slopes	50.0	6.4%
60	Shingle clay loam, 0 to 9 percent slopes	30.0	3.8%
<b>Totals for Area of Interest</b>		<b>786.6</b>	<b>100.0%</b>

## Weld County, Colorado, Northern Part

### 41—Nunn clay loam, 0 to 6 percent slopes

#### Map Unit Setting

*National map unit symbol:* 2tlpp

*Elevation:* 4,560 to 6,080 feet

*Mean annual precipitation:* 13 to 17 inches

*Mean annual air temperature:* 50 to 54 degrees F

*Frost-free period:* 135 to 160 days

*Farmland classification:* Prime farmland if irrigated

#### Map Unit Composition

*Nunn and similar soils:* 85 percent

*Minor components:* 15 percent

*Estimates are based on observations, descriptions, and transects of the mapunit.*

#### Description of Nunn

##### Setting

*Landform:* Terraces

*Landform position (three-dimensional):* Tread

*Down-slope shape:* Linear

*Across-slope shape:* Linear

*Parent material:* Pleistocene aged alluvium and/or eolian deposits

##### Typical profile

*Ap - 0 to 6 inches:* clay loam

*Bt1 - 6 to 10 inches:* clay loam

*Bt2 - 10 to 26 inches:* clay loam

*Btk - 26 to 31 inches:* clay loam

*Bk - 31 to 80 inches:* clay loam

##### Properties and qualities

*Slope:* 0 to 6 percent

*Depth to restrictive feature:* More than 80 inches

*Natural drainage class:* Well drained

*Runoff class:* Medium

*Capacity of the most limiting layer to transmit water (Ksat):*

Moderately low to moderately high (0.06 to 0.20 in/hr)

*Depth to water table:* More than 80 inches

*Frequency of flooding:* None

*Frequency of ponding:* None

*Calcium carbonate, maximum in profile:* 5 percent

*Salinity, maximum in profile:* Nonsaline (0.1 to 1.0 mmhos/cm)

*Available water storage in profile:* High (about 9.0 inches)

##### Interpretive groups

*Land capability classification (irrigated):* 3e

*Land capability classification (nonirrigated):* 4e

*Hydrologic Soil Group:* C

*Ecological site:* Clayey Plains (R067BY042CO)  
*Hydric soil rating:* No

### **Minor Components**

#### **Manzanst**

*Percent of map unit:* 10 percent  
*Landform:* Terraces  
*Landform position (three-dimensional):* Tread  
*Down-slope shape:* Linear  
*Across-slope shape:* Linear  
*Ecological site:* Clayey Plains (R067BY042CO)  
*Hydric soil rating:* No

#### **Avar**

*Percent of map unit:* 5 percent  
*Landform:* Swales on terraces, swales on terraces  
*Landform position (three-dimensional):* Tread  
*Down-slope shape:* Concave, linear  
*Across-slope shape:* Concave, linear  
*Ecological site:* Salt Flat (R067BY033CO)  
*Hydric soil rating:* No

## **Data Source Information**

Soil Survey Area: Weld County, Colorado, Northern Part  
Survey Area Data: Version 12, Oct 10, 2017

## Weld County, Colorado, Northern Part

### 46—Otero sandy loam, 0 to 3 percent slopes

#### Map Unit Setting

*National map unit symbol:* 3600

*Elevation:* 4,500 to 5,500 feet

*Mean annual precipitation:* 12 to 15 inches

*Mean annual air temperature:* 48 to 52 degrees F

*Frost-free period:* 130 to 180 days

*Farmland classification:* Not prime farmland

#### Map Unit Composition

*Otero and similar soils:* 85 percent

*Minor components:* 15 percent

*Estimates are based on observations, descriptions, and transects of the mapunit.*

#### Description of Otero

##### Setting

*Landform:* Alluvial fans, plains

*Down-slope shape:* Linear

*Across-slope shape:* Linear

*Parent material:* Calcareous loamy alluvium

##### Typical profile

*H1 - 0 to 5 inches:* sandy loam

*H2 - 5 to 60 inches:* sandy loam, fine sandy loam

*H2 - 5 to 60 inches:*

##### Properties and qualities

*Slope:* 0 to 3 percent

*Depth to restrictive feature:* More than 80 inches

*Natural drainage class:* Well drained

*Runoff class:* Very low

*Capacity of the most limiting layer to transmit water (Ksat):*

Moderately high to high (0.57 to 5.95 in/hr)

*Depth to water table:* More than 80 inches

*Frequency of flooding:* None

*Frequency of ponding:* None

*Calcium carbonate, maximum in profile:* 10 percent

*Salinity, maximum in profile:* Nonsaline to slightly saline (0.0 to 4.0 mmhos/cm)

*Available water storage in profile:* Very high (about 14.8 inches)

##### Interpretive groups

*Land capability classification (irrigated):* None specified

*Land capability classification (nonirrigated):* 4e

*Hydrologic Soil Group:* A

*Ecological site:* Sandy Plains (R067BY024CO)

*Hydric soil rating:* No



### **Minor Components**

#### **Stoneham**

*Percent of map unit:* 5 percent

*Hydric soil rating:* No

#### **Bushman**

*Percent of map unit:* 4 percent

*Hydric soil rating:* No

#### **Kim**

*Percent of map unit:* 3 percent

*Hydric soil rating:* No

#### **Mitchell**

*Percent of map unit:* 3 percent

*Hydric soil rating:* No

## **Data Source Information**

Soil Survey Area: Weld County, Colorado, Northern Part

Survey Area Data: Version 12, Oct 10, 2017