

**Inspection Photos**  
**Location Name: Jolley-66S91W 21NENW**  
**Location ID: #335514**  
**Inspection Date: July 11, 2019**



**Photo #1 – Facility sign.**



**Photo #2 – View of wellheads from southeast.**





**Inspection Photos**  
**Location Name: Jolley-66S91W 21NENW**  
**Location ID: #335514**  
**Inspection Date: July 11, 2019**



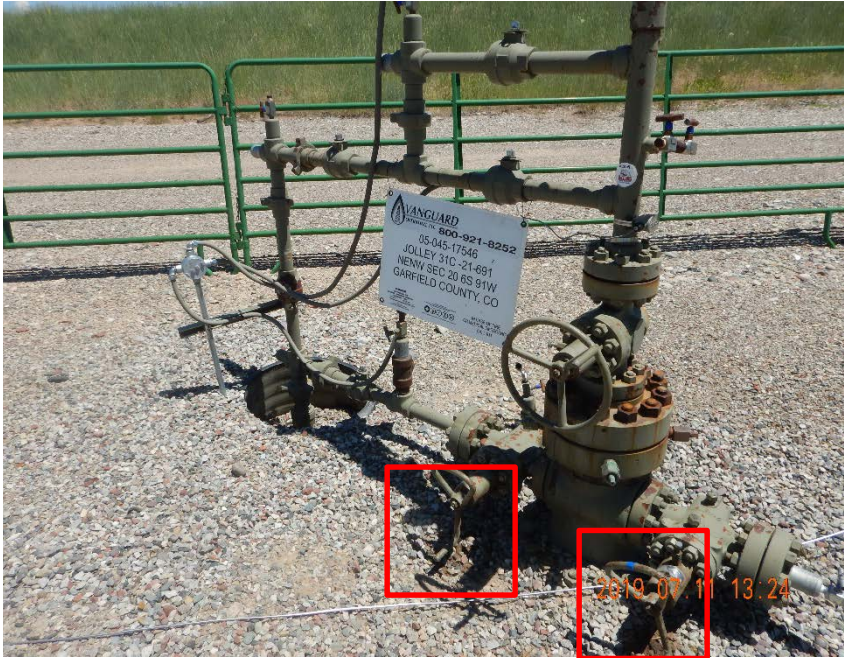
**Photo #3 – Jolley 31B-21-691 wellhead. Note localized accumulation of oil-stained material beneath valve.**



**Photo #4 - Jolley 21B-21-691 wellhead. Note localized accumulation of oil-stained material beneath valve.**



**Inspection Photos**  
**Location Name: Jolley-66S91W 21NENW**  
**Location ID: #335514**  
**Inspection Date: July 11, 2019**



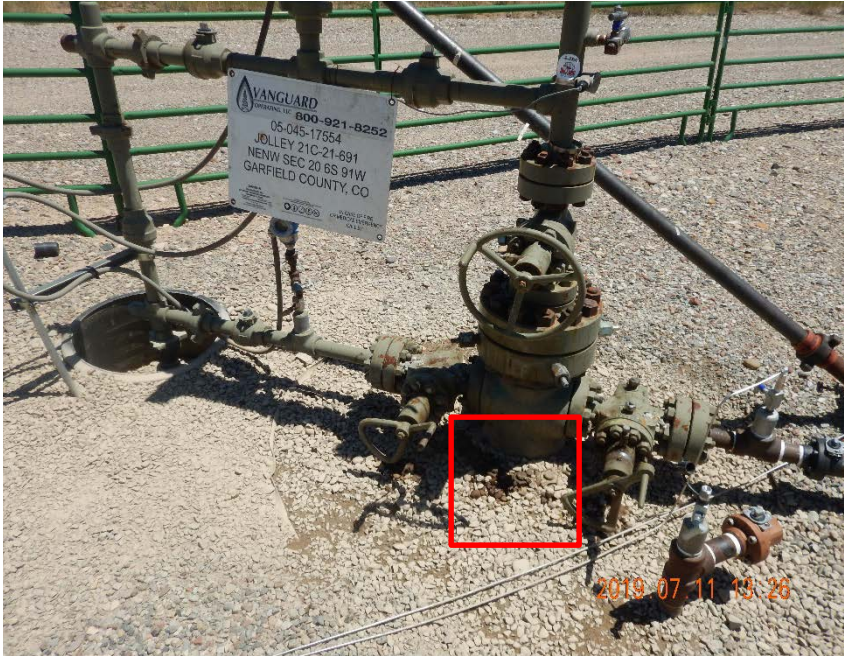
**Photo #5 - Jolley 31C-21-691 wellhead. Note localized accumulation of oil-stained material beneath valves.**



**Photo #6 - Jolley 31D-21-691 wellhead. Note localized accumulation of oil-stained material beneath wellhead.**



**Inspection Photos**  
**Location Name: Jolley-66S91W 21NENW**  
**Location ID: #335514**  
**Inspection Date: July 11, 2019**



**Photo #7 - Jolley 21C-21-691 wellhead. Note localized accumulation of oil-stained material beneath wellhead.**

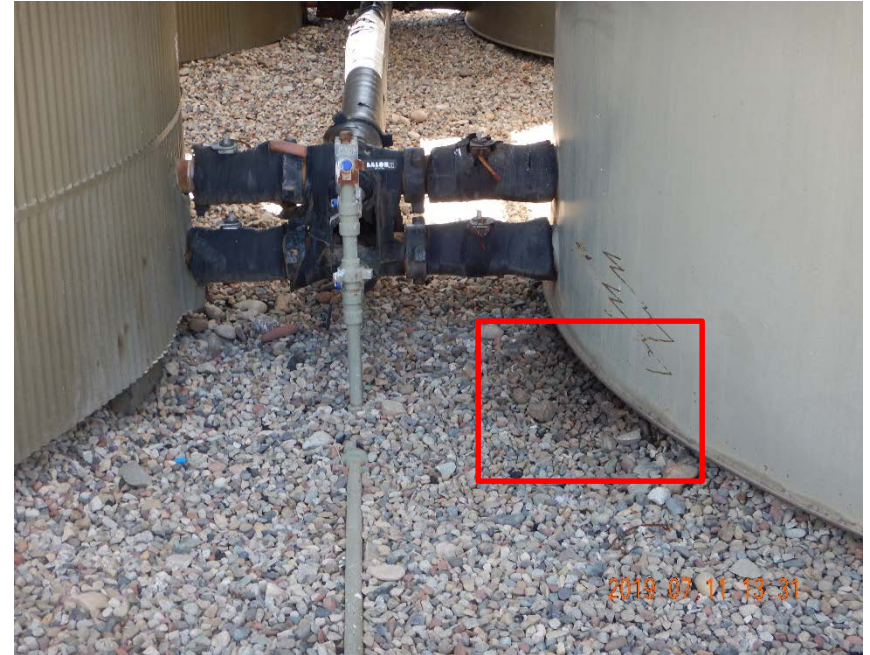


**Photo #8 – View of tank battery in southwest corner of pad (from north).**

**Inspection Photos**  
**Location Name: Jolley-66S91W 21NENW**  
**Location ID: #335514**  
**Inspection Date: July 11, 2019**



**Photo #9 – Localized accumulation of oil-stained material beneath valve on southwest condensate/produced water AST.**



**Photo #10 - Localized accumulation of oil-stained material beneath south side of northeast condensate/produced water AST.**



**Inspection Photos**  
**Location Name: Jolley-66S91W 21NENW**  
**Location ID: #335514**  
**Inspection Date: July 11, 2019**



**Photo #11 – Cardboard boxes stored inside of tank battery secondary containment.**



**Photo #12 – Metal pole stored inside of tank battery secondary containment.**

**Inspection Photos**  
**Location Name: Jolley-66S91W 21NENW**  
**Location ID: #335514**  
**Inspection Date: July 11, 2019**



**Photo #13 – Unidentified red fluid and staining inside north side of tank battery secondary containment.**



**Photo #14 – Red staining on truck loadout containment device indicates previous fluid level.**



**Inspection Photos**  
**Location Name: Jolley-66S91W 21NENW**  
**Location ID: #335514**  
**Inspection Date: July 11, 2019**



**Photo #15 – Unidentified red fluid inside of truck loadout containment device.**



**Photo #16 – Red fluid accumulation at northwest corner of tank battery secondary containment, note staining level on liner.**