

Inspection Photos

Loc#446527

Operator: Sandridge

Inspection Number: 692401144

Inspection Date: 6/27/19



COLORADO
Oil & Gas Conservation
Commission
Department of Natural Resources



Photo#1:
Overview of Location to Northeast.

June 27, 2019



COLORADO
Oil & Gas Conservation
Commission
Department of Natural Resources

Inspection Photos: Sandridge Pintail Loc#446527



Photo#2:

Desirable vegetation is establishing on top of Cut, along topsoil berm; though Canada thistle (Noxious Weed) is also established (in foreground).

June 27, 2019



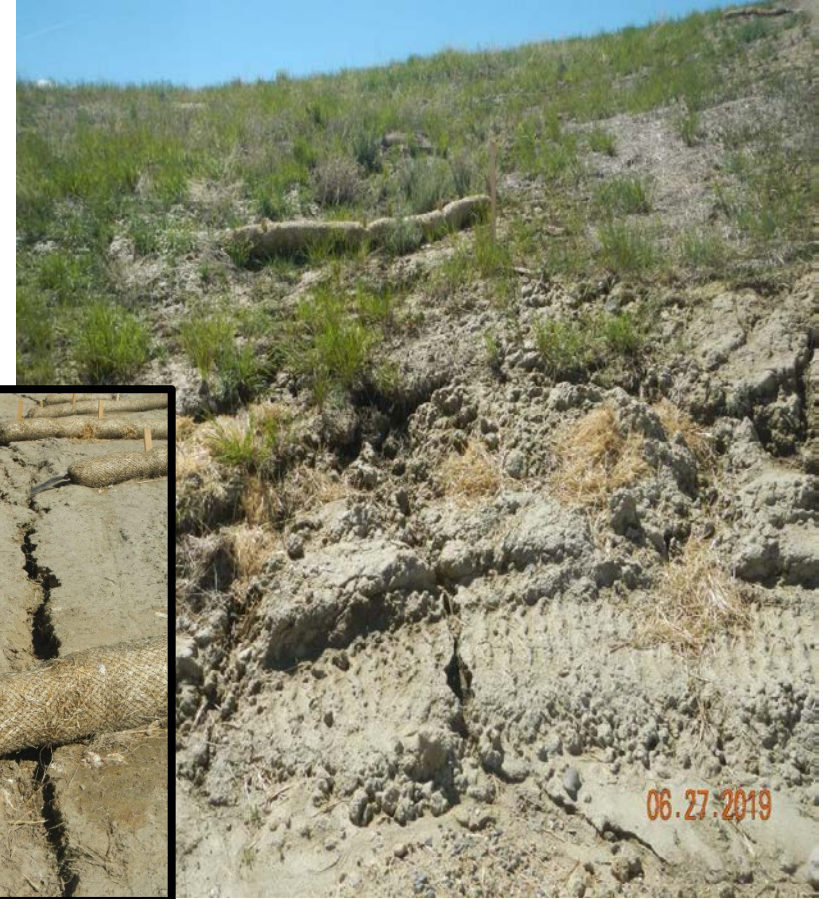
COLORADO
Oil & Gas Conservation
Commission
Department of Natural Resources



Photo#3:

Erosion initiating on Southwest corner of Cut slope.

Inspection Photos: Sandridge Pintail Loc#446527



Photo#4:
BMPS have failed; erosion occurring on Southeast corner of cut slope. Note undercutting of improperly seated wattles.

Photo#5:
BMPS have failed; erosion occurring on Southeast corner of cut slope.

June 27, 2019



COLORADO
Oil & Gas Conservation
Commission
Department of Natural Resources

Inspection Photos: Sandridge Pintail Loc#446527



Photo#6:
Sediment run-on, degradation of site still occurring behind equipment in Southeast corner.



Photo#7:
Sediment run-on, degradation of site still occurring behind equipment in Southeast corner.

June 27, 2019



Photo#8:
Weir installed at Northwest corner retaining Stormwater.

June 27, 2019



COLORADO
Oil & Gas Conservation
Commission
Department of Natural Resources

Inspection Photos: Sandridge Pintail Loc#446527



Photo#9:
Washout at Northeast corner of fill slope; from
top of slope.



Photo#10:
Washout at Northeast corner of fill slope; from
base of slope to top.

June 27, 2019