

Inspection Photos

07/10/2019

Operator: FOUNDATION ENERGY
MANAGEMENT LLC - 10112

Location ID: 330865
Weld County, CO

Aaron Trujillo
NE Reclamation Specialist
COGCC

Inspection Photos

Operator Name: FOUNDATION ENERGY MANAGEMENT LLC - 10112

Location ID: 330865



Photo 1: Photo taken from the well. Photo shows pump unit has been removed.



Photo 2: Photo taken from the location, facing north. Photos 2-4 provide an overview of the location from north, east, to southeast. Photos show equipment has been removed.

Inspection Photos

Operator Name: FOUNDATION ENERGY MANAGEMENT LLC - 10112

Location ID: 330865



Photo 3: See comments under photo 2.



Photo 4: See comments under photo 2.



COLORADO
Oil & Gas Conservation
Commission
Department of Natural Resources

Inspection Photos

Operator Name: FOUNDATION ENERGY MANAGEMENT LLC - 10112

Location ID: 330865

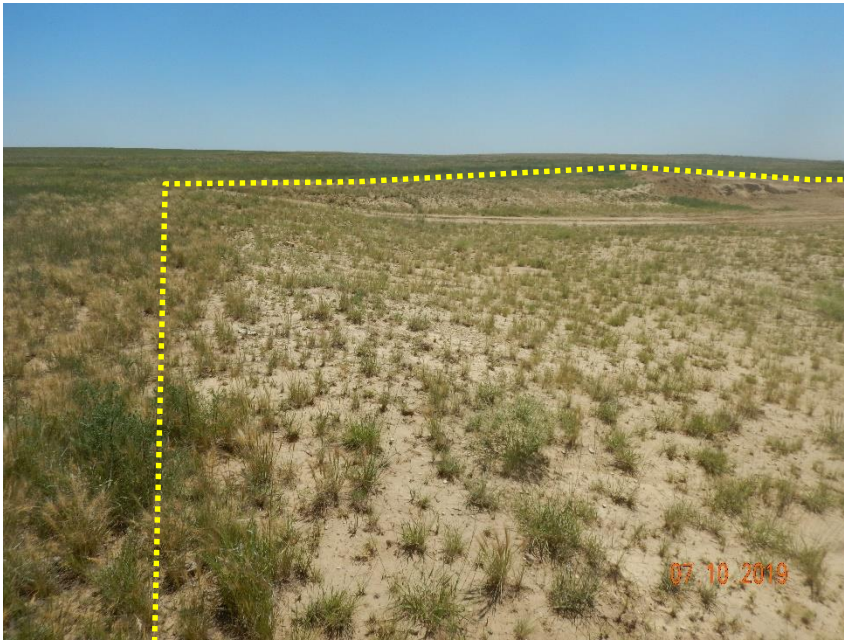


Photo 5: Photo taken from the north end of the location, facing east. Photos 5-8 provide an overview of the location from east, southeast, southwest to west. Previous inspections required operator to comply with 1003 and conduct interim reclamation on areas not needed for production. Photos show interim reclamation has not been conducted in accordance with Rule 1003.b. Yellow line shows approximate perimeter of the pad.

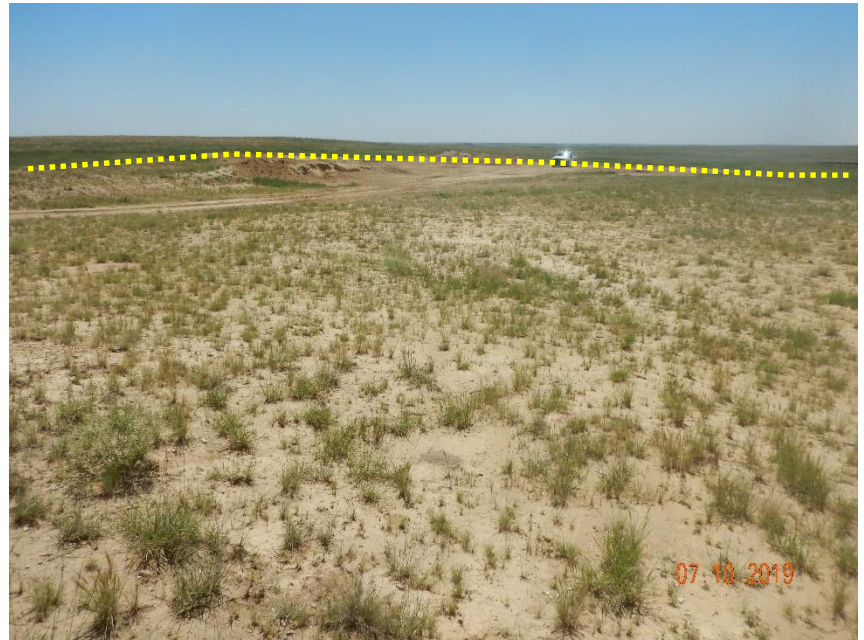


Photo 6: See comments under photo 5

Inspection Photos

Operator Name: FOUNDATION ENERGY MANAGEMENT LLC - 10112

Location ID: 330865

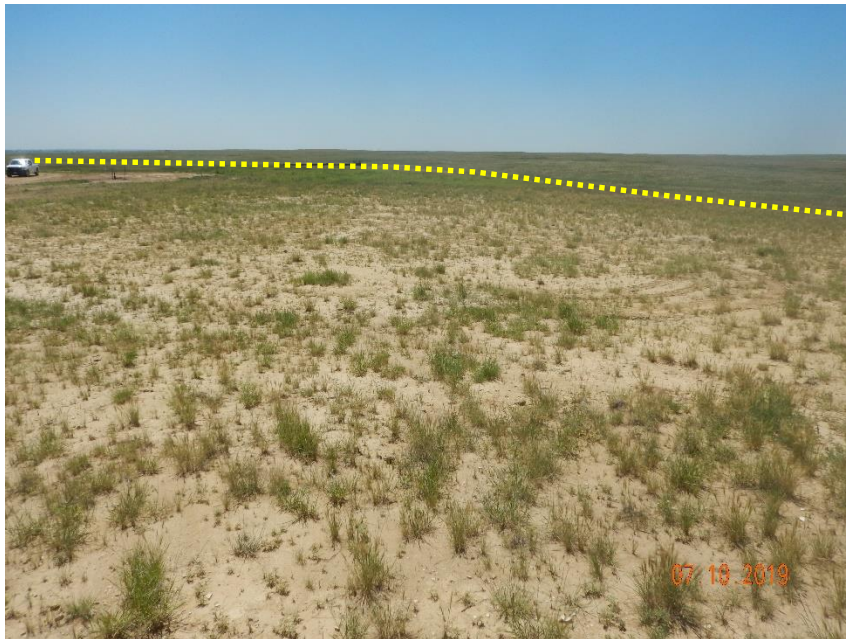


Photo 7: See comments under photo 5

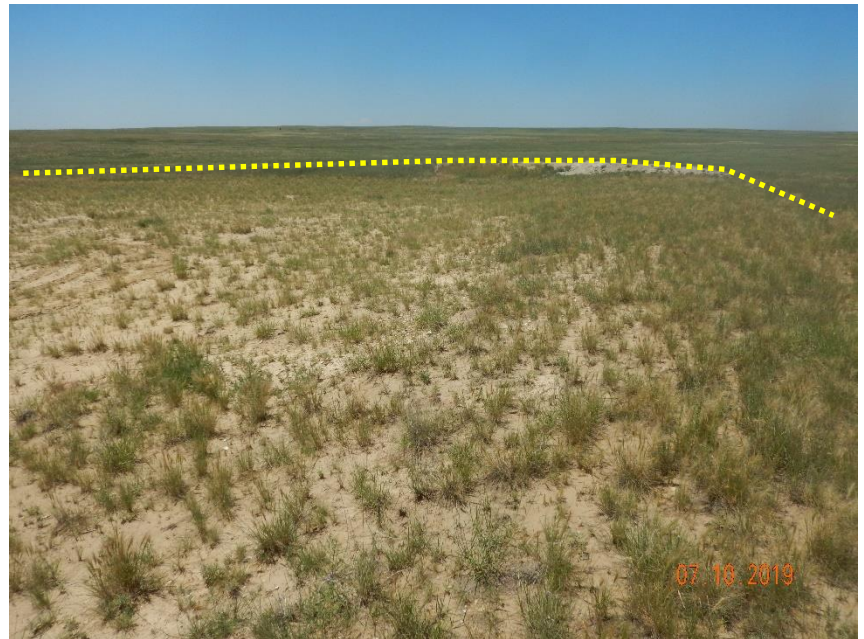


Photo 8: See comments under photo 5

Inspection Photos

Operator Name: FOUNDATION ENERGY MANAGEMENT LLC - 10112

Location ID: 330865

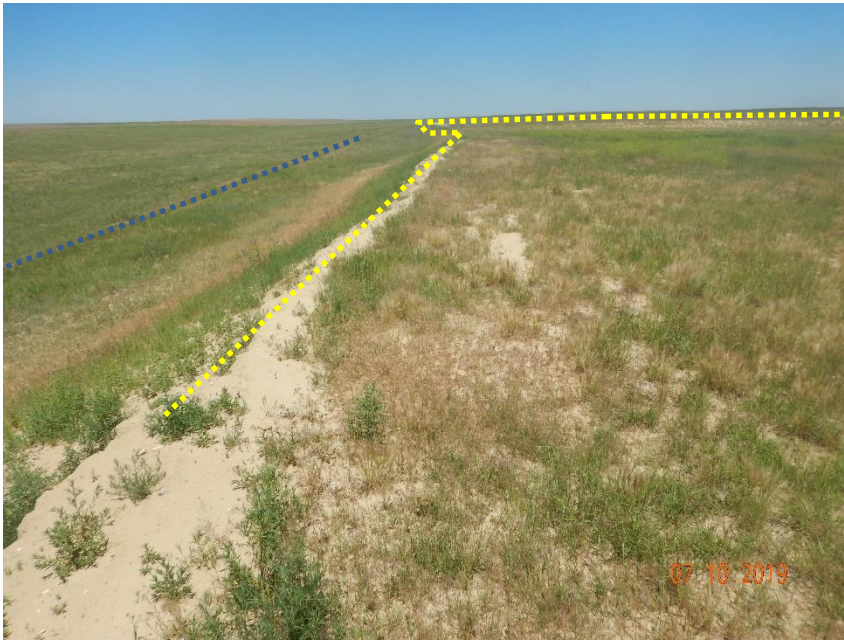


Photo 9: Photo taken from the southeast corner of the pad, facing north. See comments under photo 5. Blue line represents perimeter ditch.



Photo 10: Photo taken from the southeast corner of the pad, facing northeast. See comments under photo 5. Blue line represents perimeter ditch.

Inspection Photos

Operator Name: FOUNDATION ENERGY MANAGEMENT LLC - 10112

Location ID: 330865

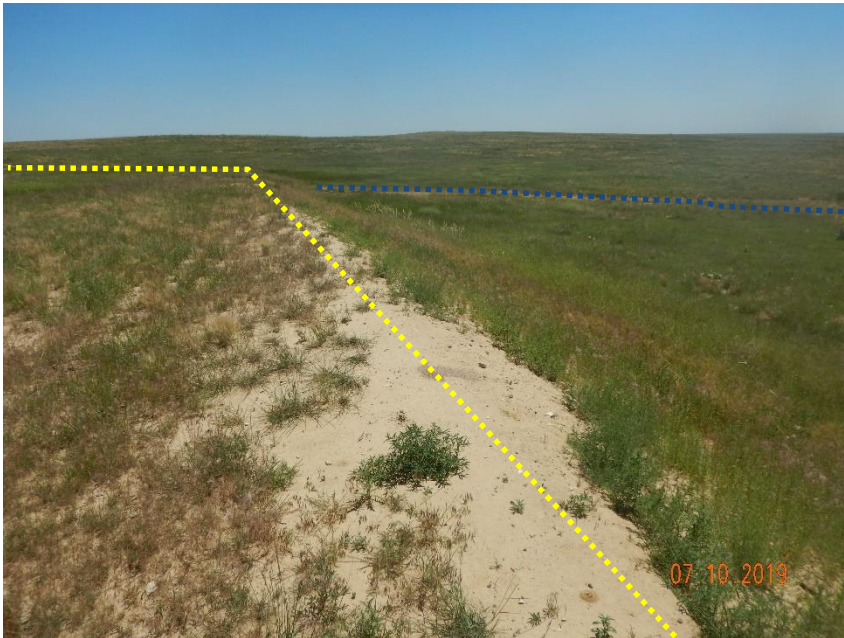


Photo 11: Photo taken from the southwest corner of the location, facing south

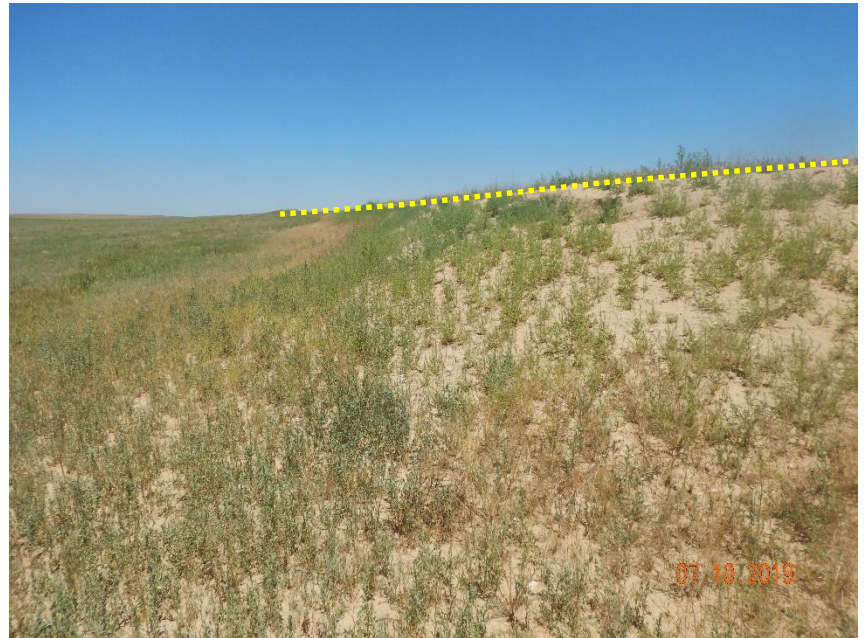


Photo 12: Photo taken from the southwest corner of the location, facing northeast. Previous inspections documented slopes on location remain predominantly bare and exposed soil, or vegetated by undesirable weedy plant species, stormwater and erosion degradation evident. Slopes remains bare and erosion degradation remains evident.

Inspection Photos

Operator Name: FOUNDATION ENERGY MANAGEMENT LLC - 10112

Location ID: 330865



Photo 17: Photo taken from the south end of the location, facing east. Previous inspections documented erosion degradation on the location and required operator to implement BMPs in accordance with 1002.f. Photo shows erosion degradation remains, no BMPs have been installed or maintained.



Photo 18: Photo taken from the south end of the location, facing east. Previous inspections documented erosion degradation on the location and required operator to implement BMPs in accordance with 1002.f. Photo shows erosion degradation remains, no BMPs have been installed or maintained.

Inspection Photos

Operator Name: FOUNDATION ENERGY MANAGEMENT LLC - 10112

Location ID: 330865



Photo 19: Photo taken from the west end of the location. Photo shows vegetation on location is predominantly undesirable weedy plant species such as Kochia, Russian thistle, Puncture vine, tumble mustard, etc...



Photo 20: Photo taken from the south end of the location. Photo shows vegetation on location is predominantly undesirable weedy plant species such as Kochia, Russian thistle, Puncture vine, tumble mustard, etc...



Inspection Photos
Operator: FOUNDATION ENERGY MANAGEMENT LLC - 10112
Location ID: 330865

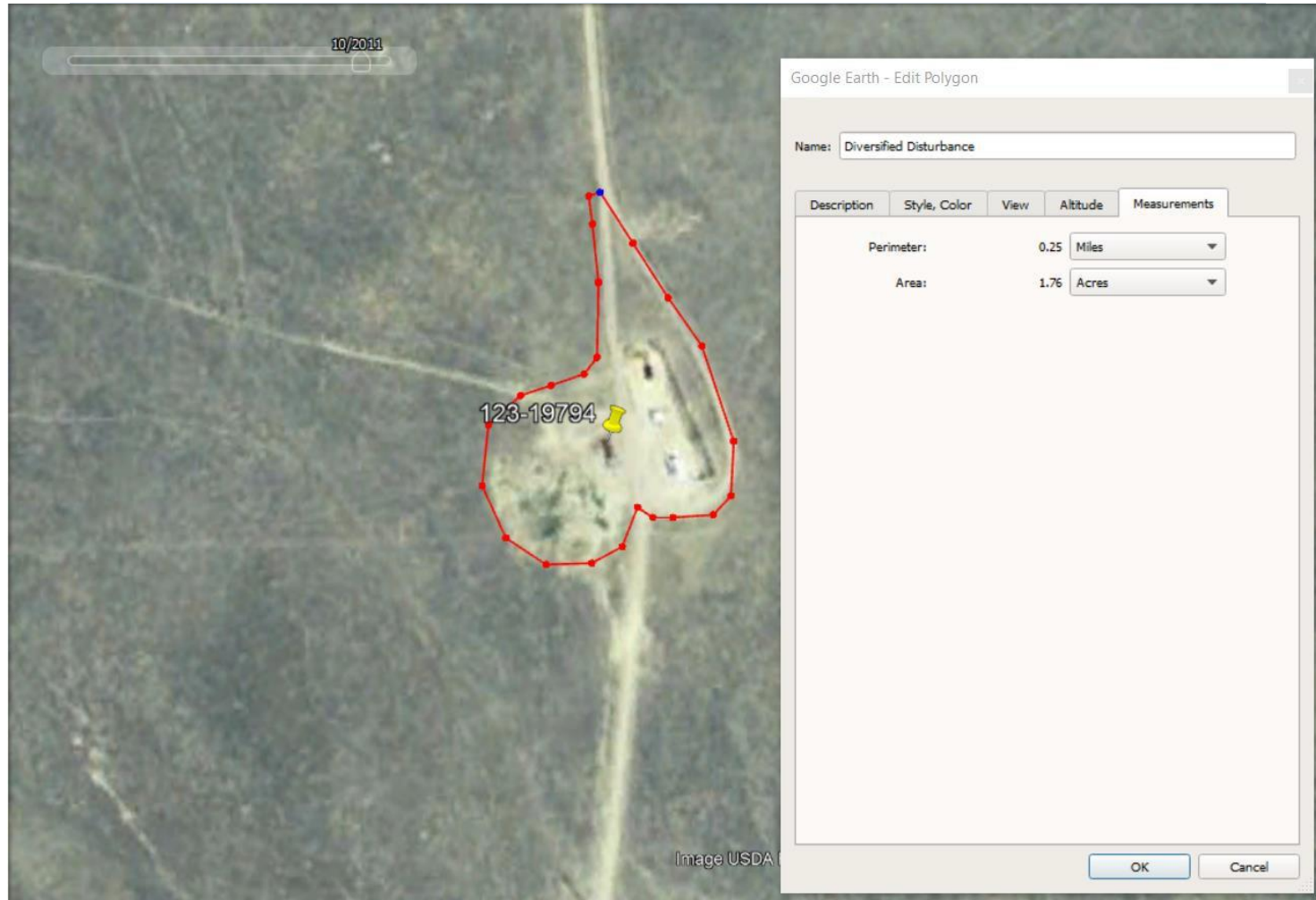


Photo 21: 2011 Aerial imagery. Location under the operation of Diversified Operating at time of image. Photo shows disturbance area to be ~1.76 acres

Inspection Photos
Operator: FOUNDATION ENERGY MANAGEMENT LLC - 10112
Location ID: 330865

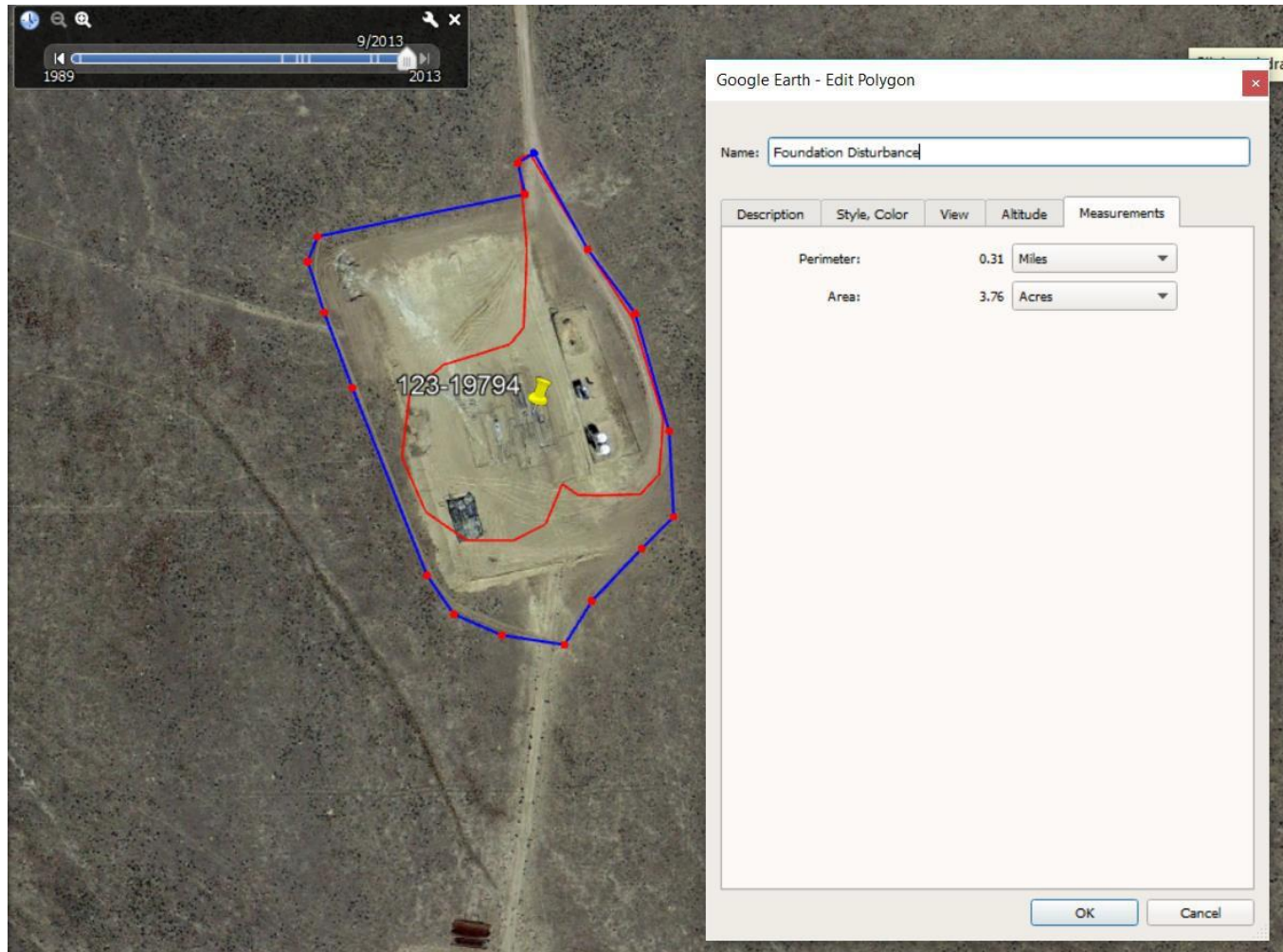


Photo 22: 2013 Aerial imagery. Location transferred ownership from Diversified to Foundation Energy in 2012. Photo shows Foundation expanded the disturbance of the location to its current size of ~3.76 acres. Location disturbance area, and areas not needed for production were not reclaimed in accordance with 1003.b.