

Inspection Photos

07/10/2019

Operator: PCR OPERATING LLC - 10657

Location ID: 313705

Morgan County, CO

Aaron Trujillo

NE Reclamation Specialist

COGCC



Inspection Photos
Operator Name: PCR OPERATING LLC - 10657
Location ID: 313705



Photo 1: Photo taken from the south end of the location/disturbance area, facing northwest. Photo provides an overview of the location



Photo 2: Photo taken from the south end of the location/disturbance area, facing north. Photo provides an overview of the location

Inspection Photos
Operator Name: PCR OPERATING LLC - 10657
Location ID: 313705

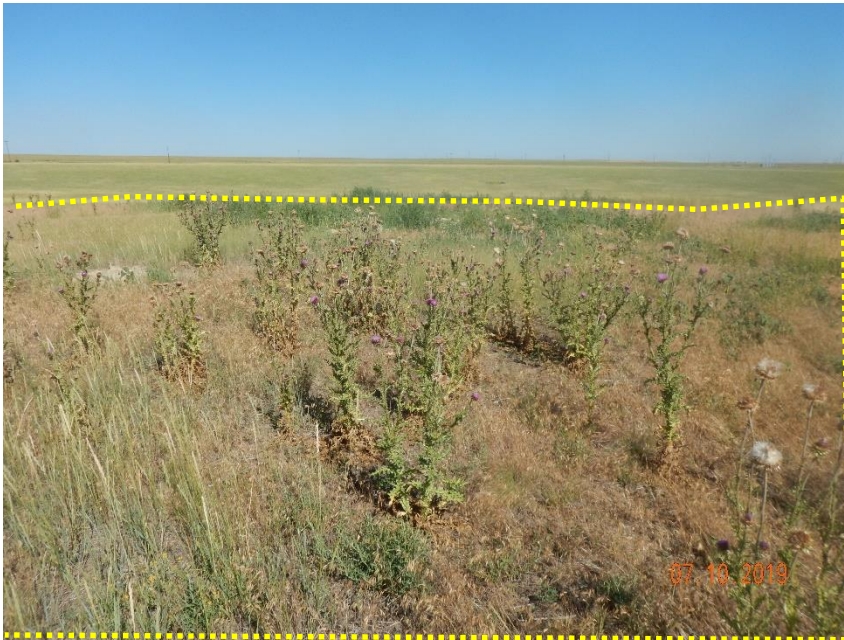


Photo 3: Photo taken from the southeast end of the location/disturbance area, facing west. Photo shows noxious weeds (Musk thistle) remains on location.



Photo 4: Photo shows well area where concrete pump base was location. Photo shows area remains bare soil or predominantly undesirable weedy plant species. Unable to find evidence that seeding/revegetation activities have been conducted and stabilization controls implemented to stabilize the seeded soil per 1000 series rules and corrective action over the location/disturbance area.

Inspection Photos
Operator Name: PCR OPERATING LLC - 10657
Location ID: 313705

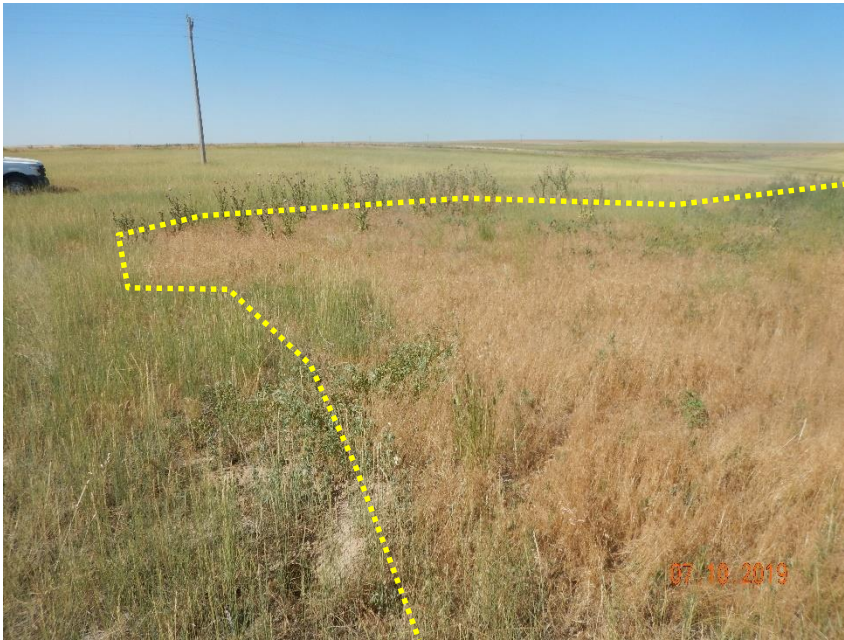


Photo 5: Photo taken from the east end of the location/disturbance area, facing southwest. Photos 5-7 provide an overview of the location/disturbance area from southwest, west, northwest to west. Photos show location/disturbance area remains predominantly undesirable weedy plants species such as Cheatgrass, Musk Thistle, Canada thistle, and Kochia. Unable to find evidence that seeding/revegetation activities have been conducted and stabilization controls implemented to stabilize the seeded soil per 1000 series rules and corrective action over the location/disturbance area.



Photo 6: See comments under photo 5.

Inspection Photos
Operator Name: PCR OPERATING LLC - 10657
Location ID: 313705



Photo 7: See comments under photo 5.



Photo 8: Photo taken from the adjacent reference area. Photo shows vegetation over the reference. Species observed predominantly Crested Wheatgrass.

Inspection Photos
Operator Name: PCR OPERATING LLC - 10657
Location ID: 313705

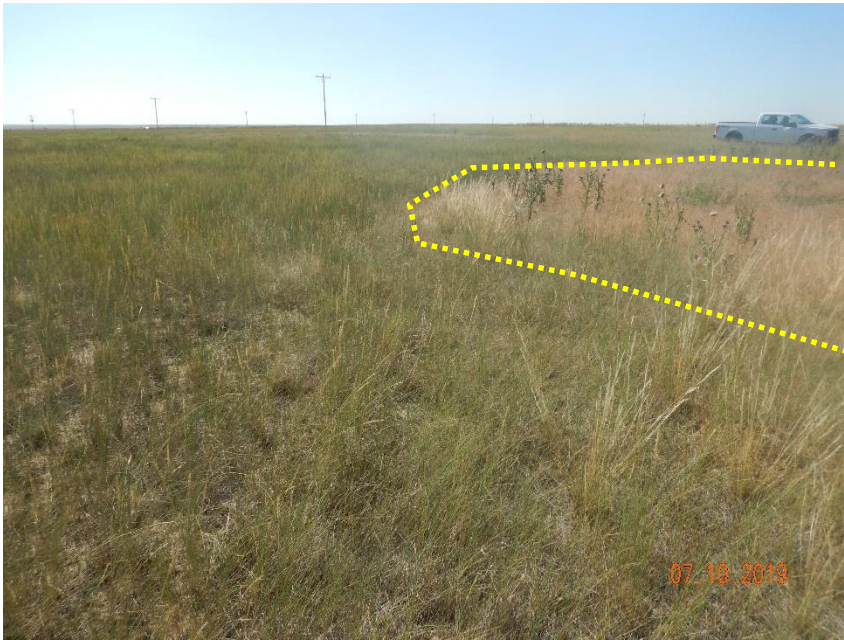


Photo 9: Photo taken from the northeast end of the location/disturbance area, facing southeast. Photos 9-12 provide an overview of the location/disturbance area from southeast, south, southwest, to west. Photos show location/disturbance area remains predominantly undesirable weedy plants species such as Cheatgrass, Musk Thistle, Canada thistle, and Kochia. Unable to find evidence that seeding/revegetation activities have been conducted and stabilization controls implemented to stabilize the seeded soil per 1000 series rules and corrective action over the location/disturbance area.

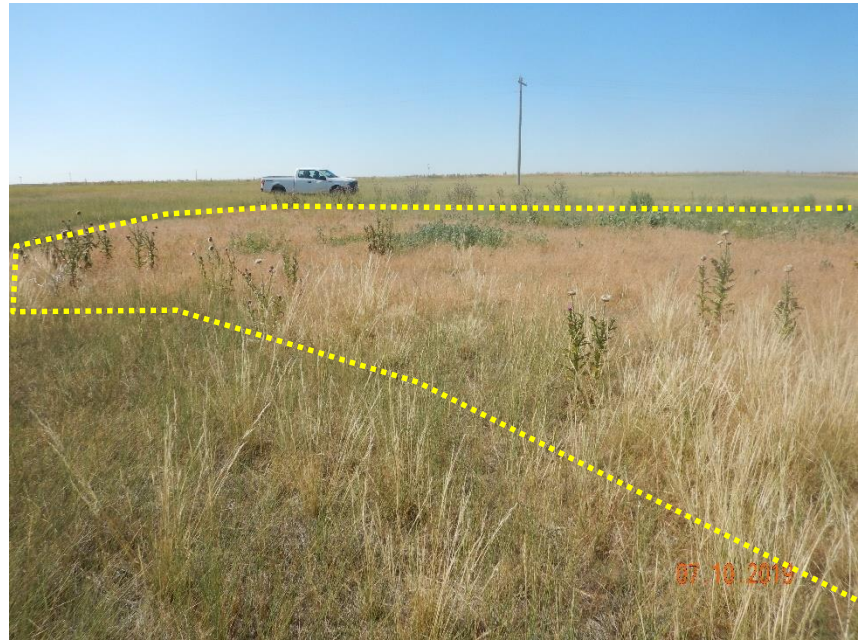


Photo 10: See comments under photo 9.

Inspection Photos
Operator Name: PCR OPERATING LLC - 10657
Location ID: 313705



Photo 11: See comments under photo 9.



Photo 12: See comments under photo 9.

Inspection Photos
Operator Name: PCR OPERATING LLC - 10657
Location ID: 313705



Photo 13: Photo taken from the location. Photo shows Scotch thistle that has matured and dispersed seeds.



Photo 14: Photo of Canada thistle on location.