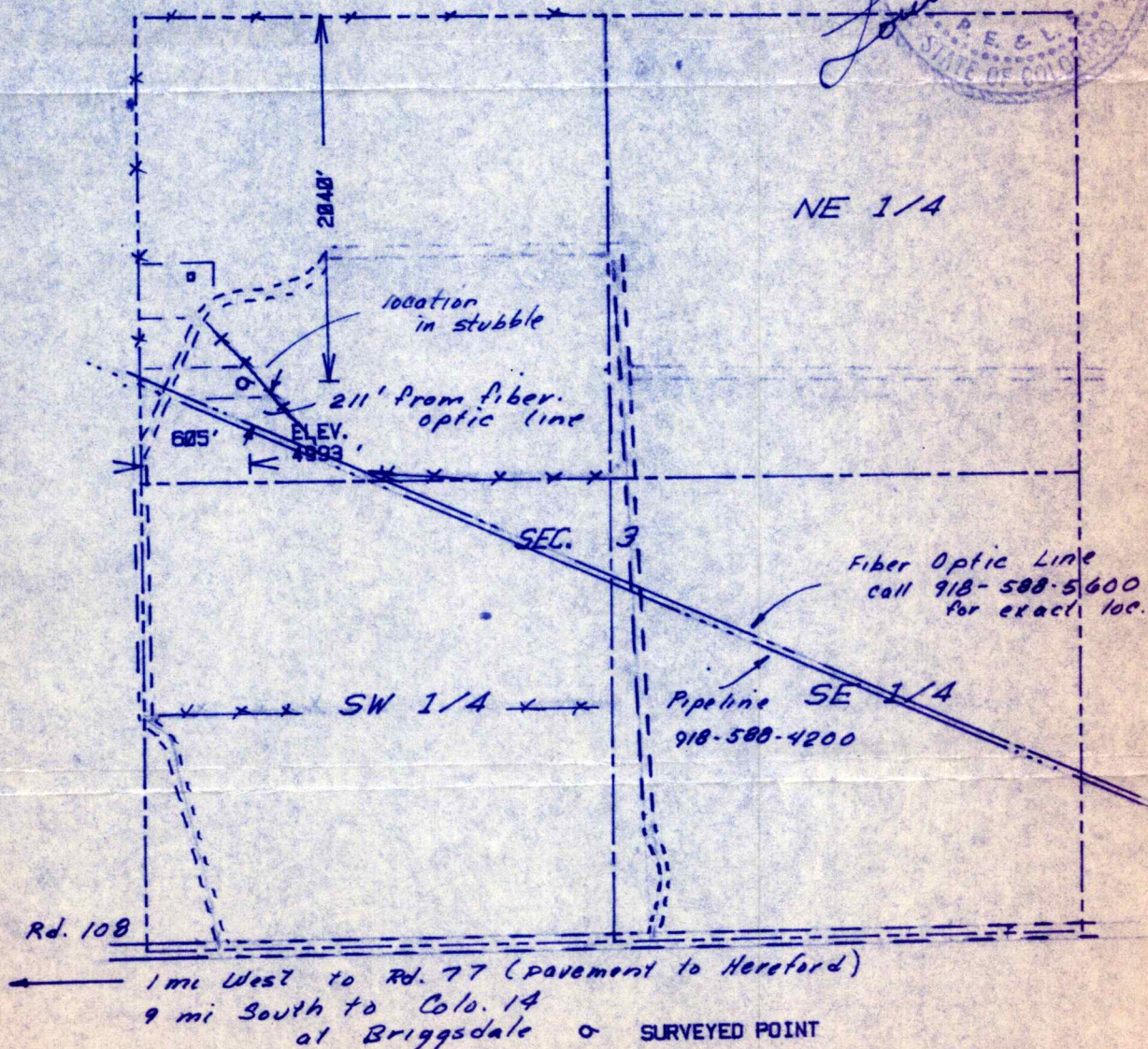
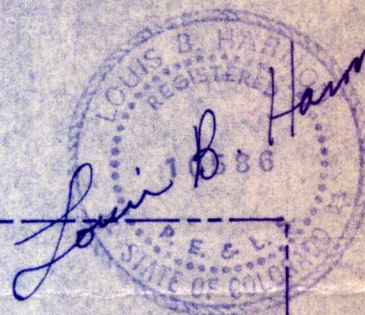


RECEIVED

DEC 22 1988

COLD OIL & GAS CONS. COMM.

THE ACCOMPANYING PLAT IS AN ACCURATE REPRESENTATION SHOWING THE LOCATION OF A PROPOSED WELL. THIS LOCATION MAY BE DESCRIBED AS A POINT 2040 FEET SOUTH OF THE NORTH LINE, AND 605 FEET EAST OF THE WEST LINE OF SECTION 3, TOWNSHIP 9 N RANGE 62 W OF THE 6th P.M., WELD COUNTY, CO. THE SURFACE ELEVATION AT THIS POINT IS 4993 FEET m.s.l.

BEST IMAGE
AVAILABLE

SCALE - 1"=1000'

SURVEYED POINT

REFERENCE STAKE (0' N, 690' W)

NW 1/4 SEC. 3, T 9 N, R 62 W

ARMON

ENGINEERING

SERVICES

CLARK #3-1

FELMONT OIL CORP

WELD CO., CO 20 DEC. 1988

8270-101

98/69

(10)