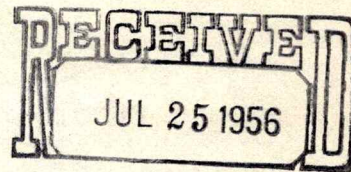
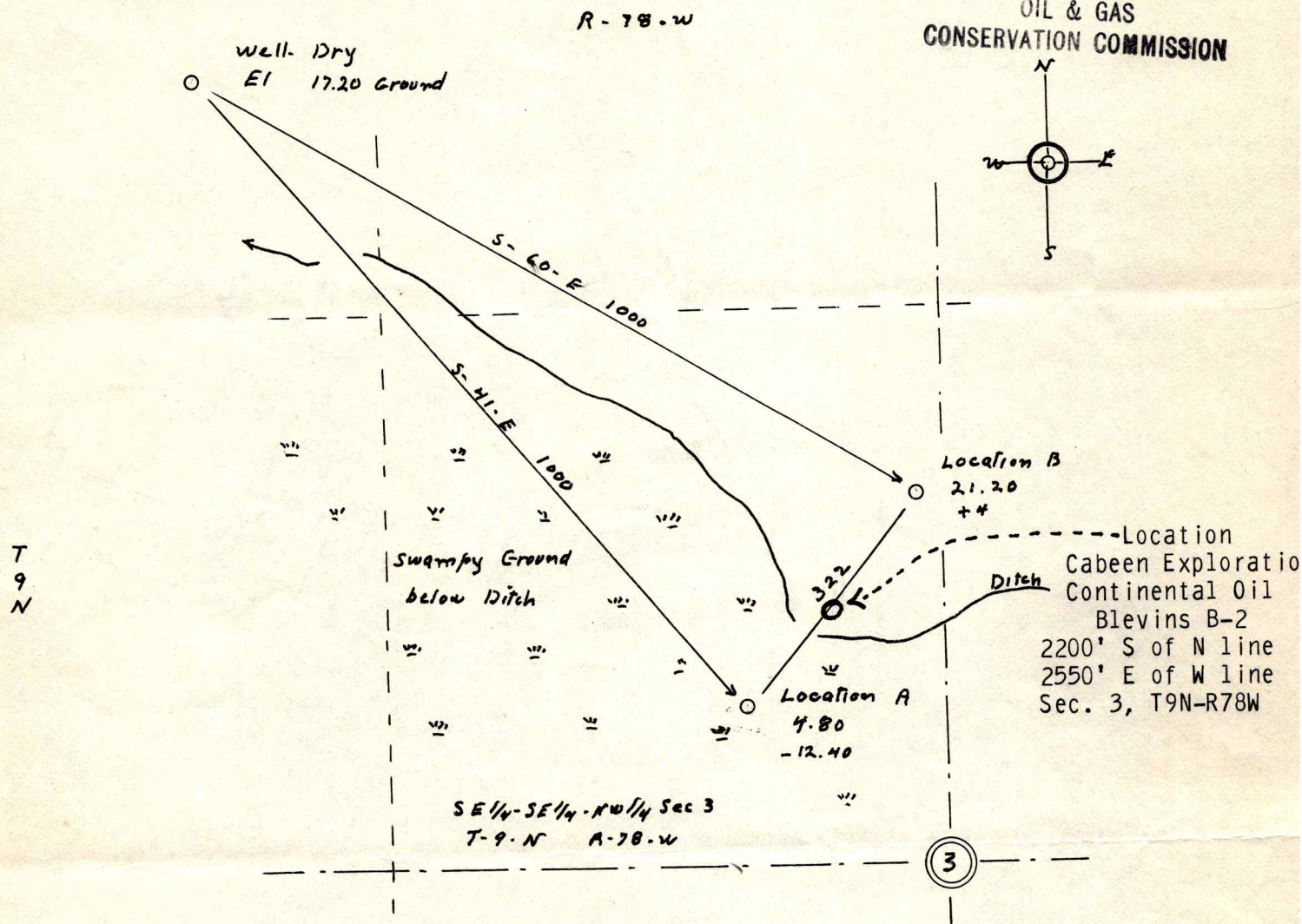




00260206

F. DE LYNDON

JACKSON COUNTY SURVEYOR  
COALMONT, COLORADOOIL & GAS  
CONSERVATION COMMISSION


WELL LOCATIONS .. CABEEN EXPLORATION CORP. .. JACKSON COUNTY COLORADO.

Sketch map of location first given "A" and alternate location "B" located in the SE 1/4, SE 1/4, NW 1/4, Sec 3, T-9-N, R-78-West of the 6th PM.

Location A .. S-41°-E 1000 feet from last well.  
 From west line section 3 ... 2400 feet  
 " north " " 3 ... 2450 "  
 Elevation in reference to last well ... 4.80 or minus 12.40 feet.

Location B .. S-60°-E 1000 feet from last well.  
 From west line section 3 ... 2600 feet  
 " north " " 3 ... 2200 "  
 Elevation in reference to last well ... 21.20 or plus 4 feet.

Survey July 12, 1956

  
 F. de Lyndon