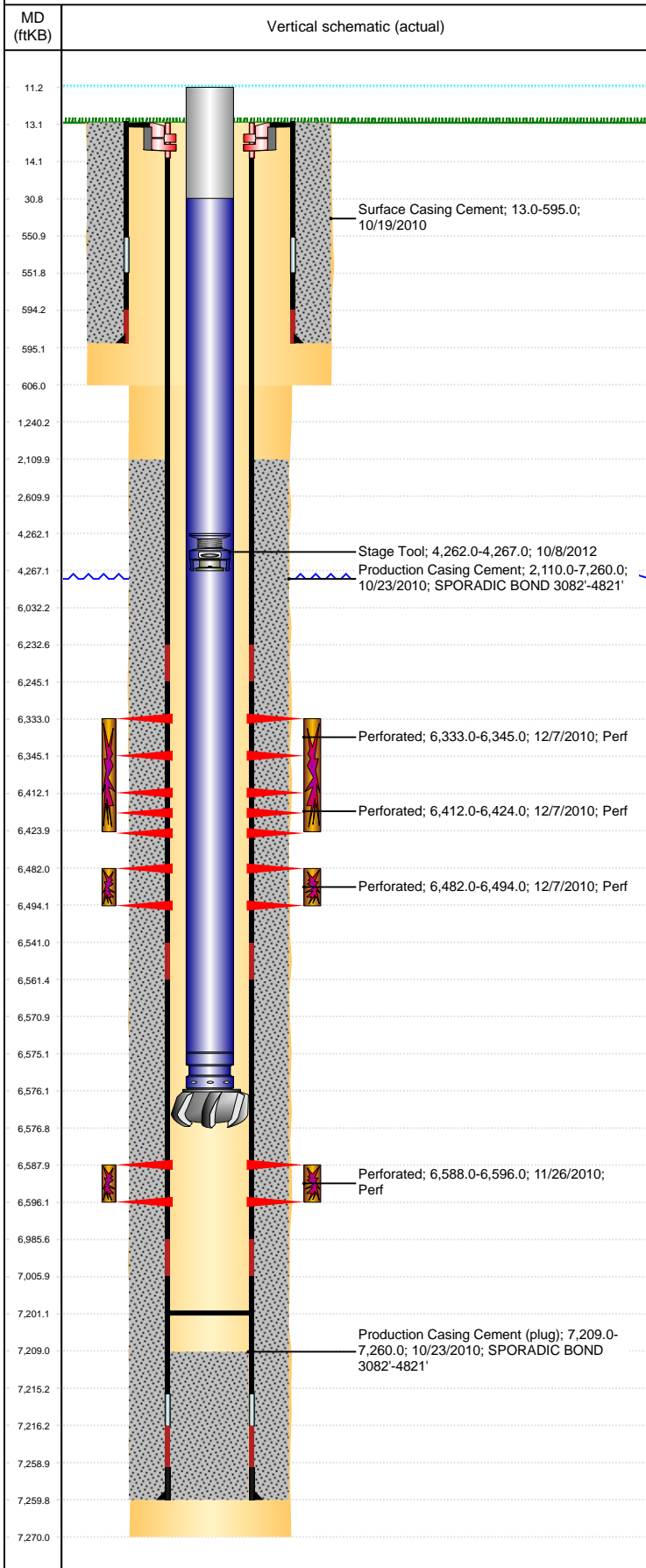


Well Name: 70 RANCH USX BB27-02

VERTICAL, ORIGINAL HOLE, 7/2/2019 4:10:53 PM



Well Header										
API 05-123-30851			Business Unit DJ BASIN			District 15		Well Config VERTICAL		
KB - GL / MSL (ft... 13.00		Spud Date 10/19/2010		P & A Date		Well Production Status PR			SoRT No	
Comment										
Surface Location (Congressional)										
Qtr 3 NW	Qtr 4 NE	Section 27	Twnshp 5	Twsh... N	Range 63	Rng E... W	Actual Latitude (°) 40.37595880		Actual Longitude (°) -104.41894544	
Wellbore Sections										
Section Des			Size (in)			Act Top, MD (ftKB)		Act Btm, MD (ftKB)		
SURFACE			12 1/4			13		606		
PRODUCTION			7 7/8			606		7,270		
Casing Strings										
Csg Des			Run Date		OD (in)	Wt/Len (lb/ft)	Grade	Top, MD (ftKB)	MD (ftKB)	
Surface			10/19/2010		8 5/8	24.00	J-55	13.0	595.0	
Production			10/23/2010		4 1/2	11.60	M-80	13.0	7,260.0	
Cement										
Des					Start Date		Top (ftKB)		Btm (ftKB)	
Surface Casing Cement					10/19/2010		13.0		595.0	
Production Casing Cement					10/23/2010		2,110.0		7,260.0	
Zone Statuses										
Zone Name		Status Date	Status	Fluid Type	Job				Prod Method	
CODELL		12/9/2010	PR		DRILLING/COMPLETION - ORIGINAL, 10/19/201...					
NIOBRARA		12/9/2010	PR		DRILLING/COMPLETION - ORIGINAL, 10/19/201...					
Perforation Data										
Linked Zone			Bnch/Stg	Entered Shot Total	Top (ftKB)		Btm (ftKB)		Date	
NIOBRARA, ORIGINAL HOLE			A	24	6,333.00		6,345.00		12/7/2010	
NIOBRARA, ORIGINAL HOLE			B	24	6,412.00		6,424.00		12/7/2010	
NIOBRARA, ORIGINAL HOLE			C	24	6,482.00		6,494.00		12/7/2010	
CODELL, ORIGINAL HOLE			1	32	6,588.00		6,596.00		11/26/2010	
Stimulation Intervals										
Zone					Start Date		Top (ftKB)		Btm (ftKB)	
NIOBRARA, ORIGINAL HOLE					12/7/2010		6,333.0		6,424.0	
NIOBRARA, ORIGINAL HOLE					12/7/2010		6,482.0		6,494.0	
CODELL, ORIGINAL HOLE					12/7/2010		6,588.0		6,596.0	
Other In Hole										
Run Date		Des				OD (in)	Top (ftKB)		Btm (ftKB)	
10/8/2012		Stage Tool				2	4,262.0		4,267.0	
4/11/2017		Plunger Lift				1 7/8				
Logs										
Date		Type					Top, MD (ftKB)		Btm, MD (ftKB)	
10/22/2010		Caliper/Comp. Density/Neutron/GR/SP/ML					2,500.0		7,251.0	
10/22/2010		DIL/GR/SP/Caliper					595.0		7,271.0	
10/27/2010		CBL/CCL/GR/VDL					1,900.0		7,209.0	
Plug Back Total Depths										
Date		Type			Com				Depth (ftKB)	
10/27/2010		FILL			DEPTH LOGGER				7,209.0	
12/30/2010		PLUG REMNANTS			DRILL 2 CFTP'S W/ CUTRITE BIT AND N2. CHASE PLUGS D...				7,201.0	