

2" = 100' TVD

COMPANY : HIGHPOINT RESOURCES									
WELL : ANSCHUTZ EQUUS FARMS 5-61-35-3340B									
FIELD : WATTENBERG									
COUNTY : WELD									
STATE : COLORADO									
COUNTRY : U.S.A.									
UWI : 05-123-49226									
WELL LOCATION						OTHER SERVICES			
LAT:40°21'17.030"N LONG:104°11'12.170"W						NAD83			
N:1374779.19 ft E:3365994.64 ft									
SEC:34 TWP:5N RANGE:61W									
DEPTH REF. : RKB						DIRECTIONAL			
REF. HEIGHT : 16.500 ft						ROP			
GROUND LEVEL : 4479.600 ft						G.L. to MEAN SEA LEVEL			
BOREHOLE RECORD						DEVIATION RECORD			
HOLE SIZE in	FROM ft	TO ft	INCLINATION deg	FROM ft	TO ft				
13.5	0	1011	0-8	0	1159				
6.5	1011	6228	8-21	1159	2502				
6.5	6228	15968	21-10	2502	3172				
			10-2	3172	5187				
			2-90	5187	15968				
CASING RECORD									
CASING SIZE in	FROM ft	TO ft							
9.625	0	1011							
7	1011	6228							
DRILLING CO.:CADE									
RIG: 24									
LWD UNIT NO.:KIT MUD PUDISTRICT: CASPER, CASPER									
SPUD DATE: 04/18/2019									
LWD START DATE: 05/01/2019 DEPTH: 1011 ft									
LWD END DATE: 05/07/2019 DEPTH: 15968 ft									
TOTAL DEPTH: 15968 ft									

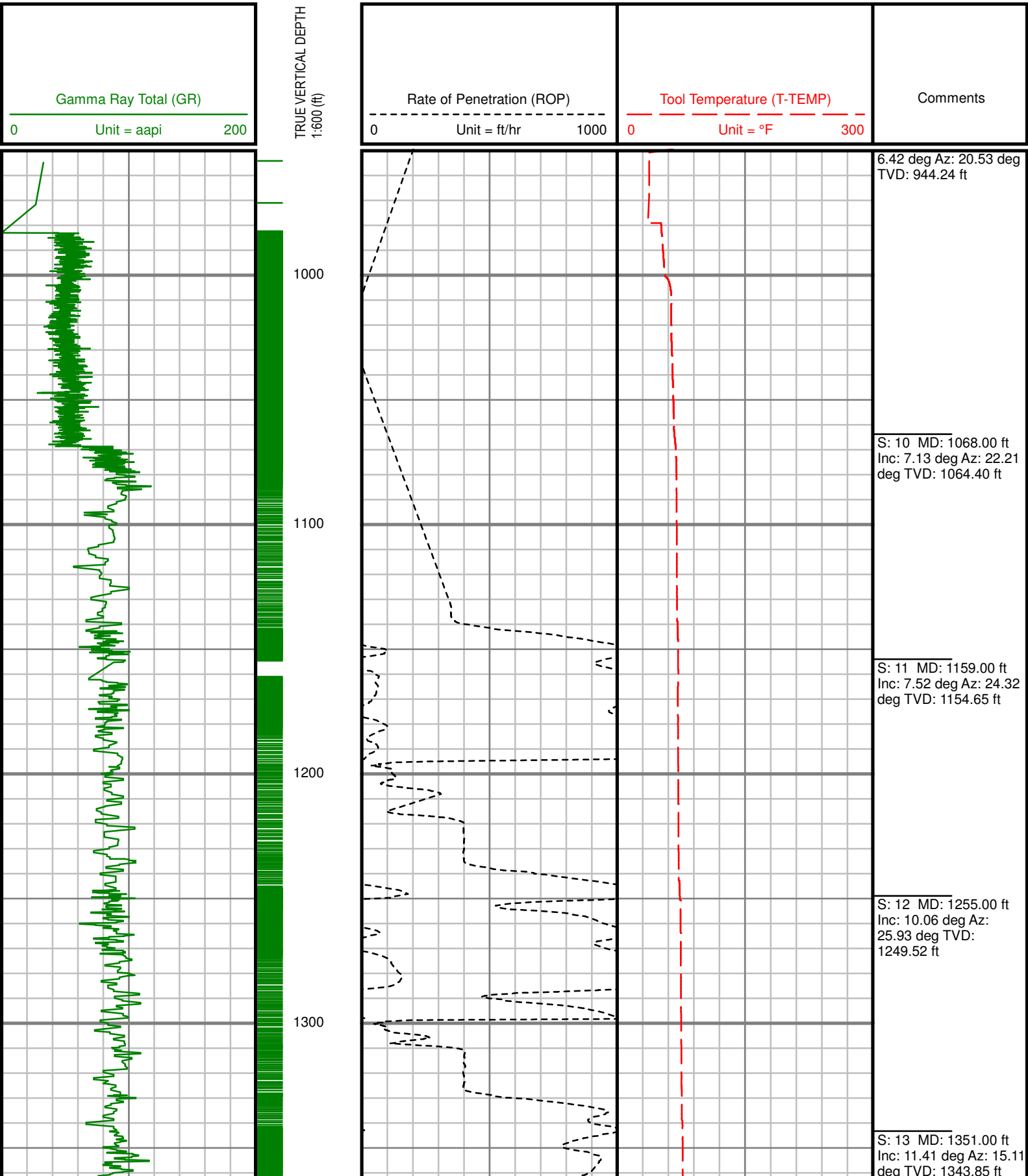
Run Data						
RUN NUMBER	1	2	3	4		
START DATE	04/18/2019	04/19/2019	05/01/2019	05/03/2019		
START TIME	12:00	11:00	05:00	06:40		
END DATE	04/19/2019	04/19/2019	05/02/2019	05/07/2019		
END TIME	11:00	14:15	14:00	02:40		
DEPTH IN (ft)	0	1011	1011	6244		
DEPTH OUT (ft)	1011	1011	6244	15968		
LOG TOP (ft)	-	-	958	6191		
LOG BOTTOM (ft)	-	-	6191	15968		
HOLE SIZE (in)	13.5	6.5	6.5	4.25		
MUD DATA @ (ft)	1719	1719	1719	15645		
MUD TYPE	WATER-BASED	WATER-BASED	WATER-BASED	WATER-BASED		
DENSITY (lb / gal)	9.1	9.1	9.1	9		
VISCOSITY (s / qt)	33	33	33	31		
pH	8.7	8.7	8.7	9.4		
FLUID LOSS (cm3 / 30)	N/A	N/A	N/A	N/A		
SALINITY (mg/L)	650	650	650	750		
Rm (ohmm @ deg F)	N/A	N/A	N/A	N/A		
Rmf (ohmm @ deg F)	N/A	N/A	N/A	N/A		
MAX TEMP (deg F)	282	86	151	324		
Rm @ MAX TEMP (ohmm)	N/A	N/A	N/A	N/A		
LWD ENGINEER #1	A. FARQUHAR	A. FARQUHAR	A. FARQUHAR	A. FARQUHAR		
LWD ENGINEER #2	M. SUTTER	M. SUTTER	M. SUTTER	M. SUTTER		
LWD ENGINEER #3	-	-	-	-		
LOG WITNESS #1	-	-	-	-		
LOG WITNESS #2	-	-	-	-		

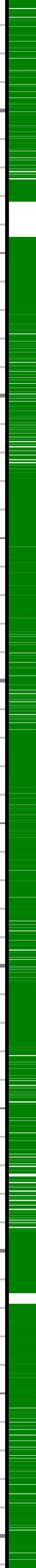
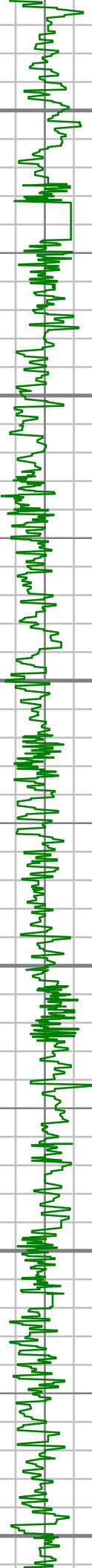
Remarks
HIGHPOINT RESOURCES AFE# 20359D
SCIENTIFIC DRILLING INTERNATIONAL JOB# OP.018267
ALL REFERENCES IN THE DEPTH TRACK ARE AT BIT DEPTH.
ALL DATA IS MEMORY DATA UNLESS STATED OTHERWISE.
FLAT AVERAGE FILTER OF 1.00 FT APPLIED TO RATE OF PENETRATION CURVE
RUN #1: MWD / DIRECTIONAL ONLY RUN
SENSORS S/N: PULSER = 128-405 / CONT = 151 / MWD EYE = 6713
BIT TO SENSOR OFFSETS: SURVEY = 57.43 FT.
RUN #2: MWD / DIRECTIONAL ONLY RUN
SENSORS S/N: PULSER = 128-287 / CONT = 303 / MWD EYE = 1757
BIT TO SENSOR OFFSETS: SURVEY = 62.5 FT.
RUN #3: MWD / GAMMA RAY LOGGING RUN
SENSORS S/N: PULSER = 128-377 / CONT = 163 / MWD EYE = 1035 / GAMMA RAY = 1341
BIT TO SENSOR OFFSETS: SURVEY = 57.43 FT. / GAMMA RAY = 53.43 FT.
RUN #4: MWD / GAMMA RAY LOGGING RUN
SENSORS S/N: PULSER = 78-322 / CONT = 303 / MWD EYE = 146 / GAMMA RAY = 1070
BIT TO SENSOR OFFSETS: SURVEY = 54.89 FT. / GAMMA RAY = 50.89 FT.
MNEMONICS LIST:
GR = GAMMA RAY TOTAL

[illegible]

All interpretations are opinions based on inferences from electrical or other measurements and we cannot, and do not guarantee the accuracy or correctness of any interpretations, and we shall not, except in the case of gross or willful negligence on our part, be liable or responsible for any loss, costs, damages or expenses incurred or sustained by anyone resulting from any interpretation made by any of our officers, agents or employees. These interpretations are also subject to our general terms and conditions as set out in our current price schedule.

HIGHPOINT RESOURCES
ANSCHUTZ EQUUS FARMS 05-61-35-3340B
WATTENBERG FIELD
WELD COUNTY, COLORADO
05-123-49226





1400

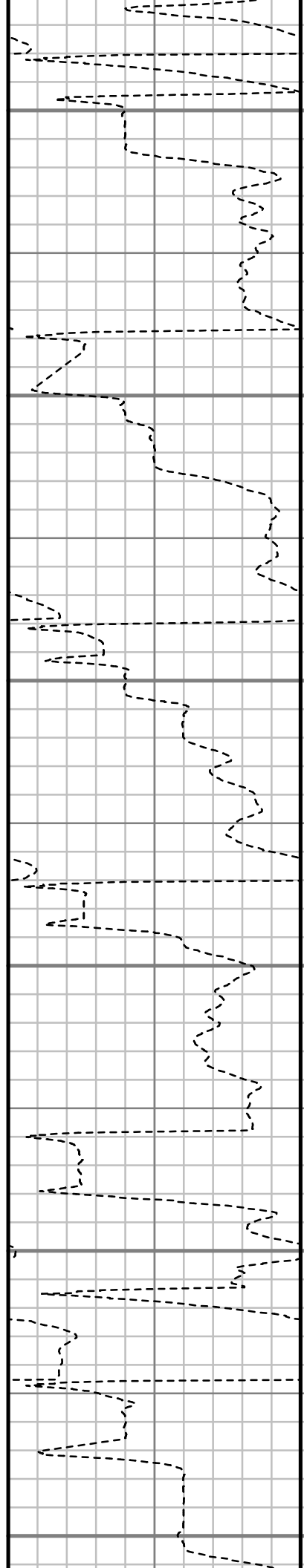
1500

1600

1700

1800

1900



S: 14 MD: 1447.00 ft
Inc: 10.27 deg Az:
13.13 deg TVD:
1438.13 ft

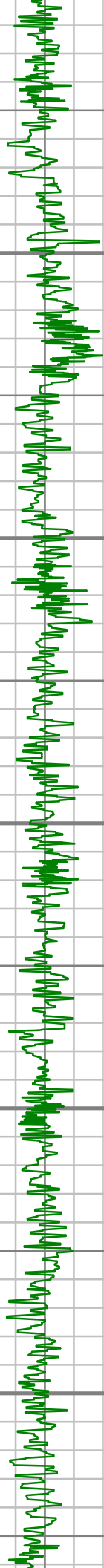
S: 15 MD: 1543.00 ft
Inc: 10.06 deg Az:
12.19 deg TVD:
1532.62 ft

S: 16 MD: 1639.00 ft
Inc: 11.51 deg Az:
12.17 deg TVD:
1626.93 ft

S: 17 MD: 1735.00 ft
Inc: 13.23 deg Az:
10.16 deg TVD:
1720.69 ft

S: 18 MD: 1830.00 ft
Inc: 17.03 deg Az:
11.04 deg TVD:
1812.38 ft

S: 19 MD: 1926.00 ft
Inc: 22.12 deg Az:
10.00 deg TVD:
1912.38 ft



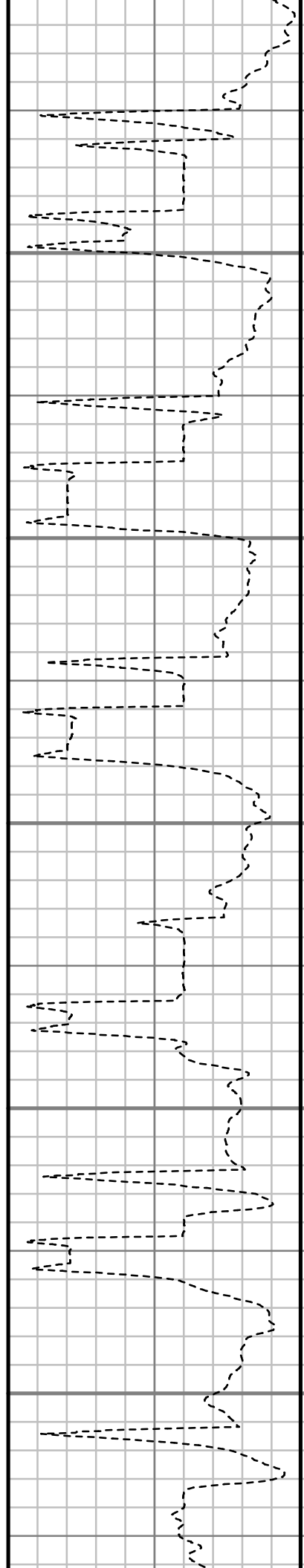
2000

2100

2200

2300

2400



Inc: 20.19 deg Az: 9.29
deg TVD: 1903.35 ft

S: 20 MD: 2022.00 ft
Inc: 20.43 deg Az: 7.47
deg TVD: 1993.38 ft

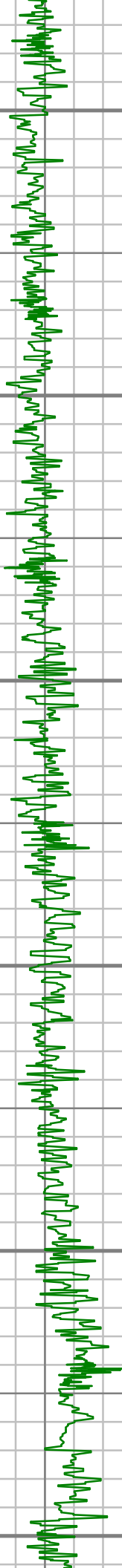
S: 21 MD: 2118.00 ft
Inc: 18.93 deg Az:
11.93 deg TVD:
2083.78 ft

S: 22 MD: 2214.00 ft
Inc: 18.92 deg Az:
22.00 deg TVD:
2174.62 ft

S: 23 MD: 2310.00 ft
Inc: 19.59 deg Az:
23.68 deg TVD:
2265.24 ft

S: 24 MD: 2406.00 ft
Inc: 20.98 deg Az:
18.27 deg TVD:
2355.30 ft

S: 25 MD: 2502.00 ft
Inc: 20.92 deg Az:
14.92 deg TVD:



2500

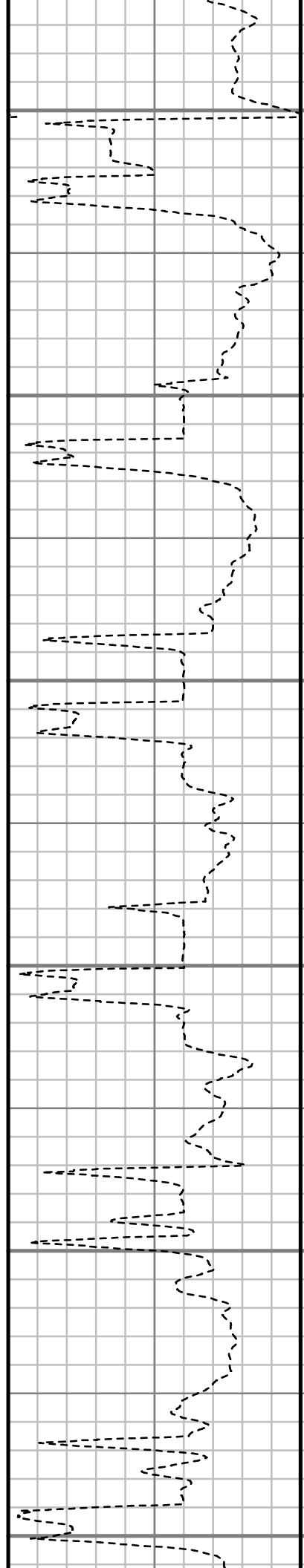
2600

2700

2800

2900

3000



Inc: 17.32 deg TVD:
2444.95 ft

S: 26 MD: 2597.00 ft
Inc: 18.88 deg Az:
15.60 deg TVD:
2534.27 ft

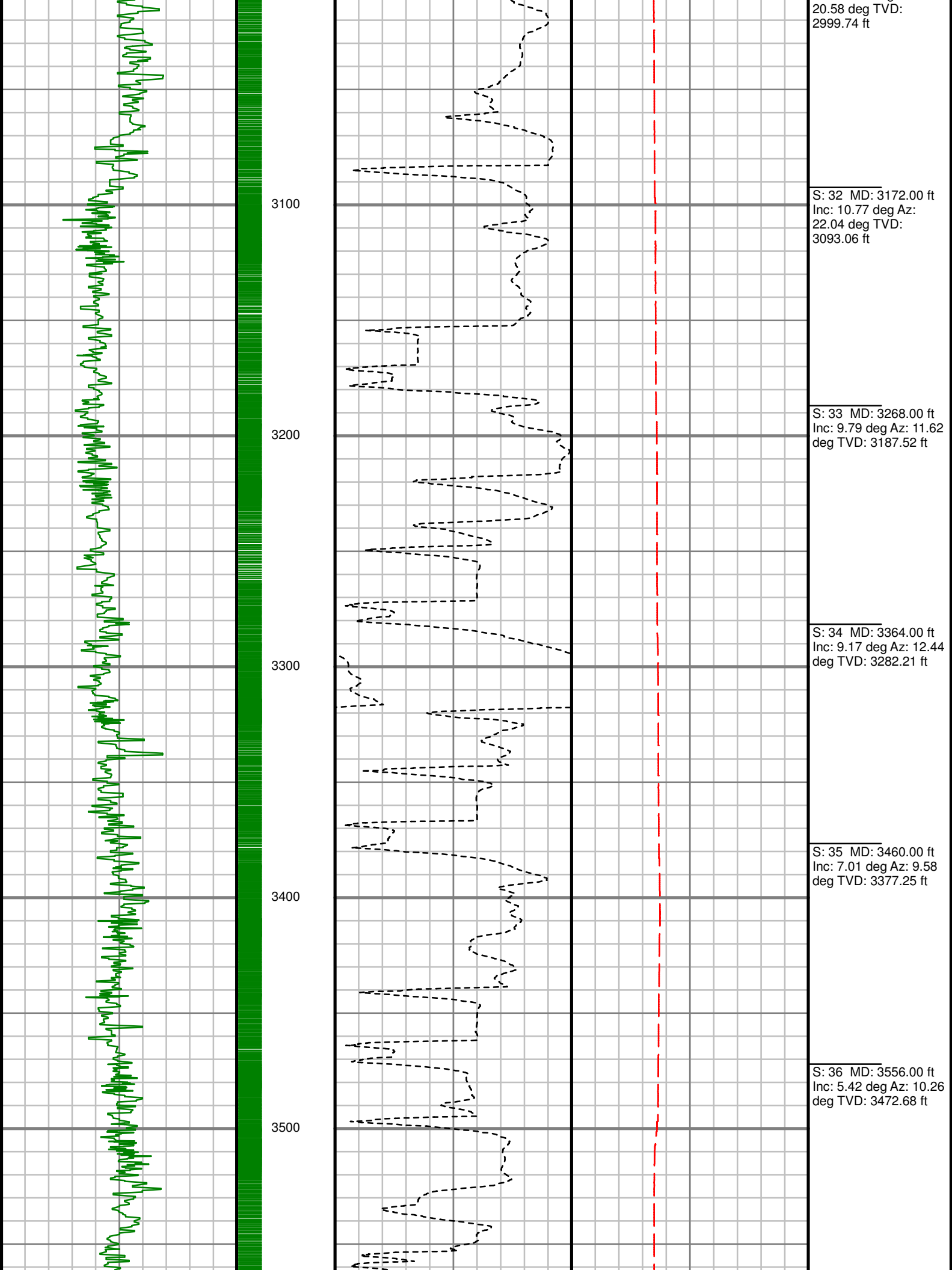
S: 27 MD: 2693.00 ft
Inc: 17.30 deg Az:
14.44 deg TVD:
2625.52 ft

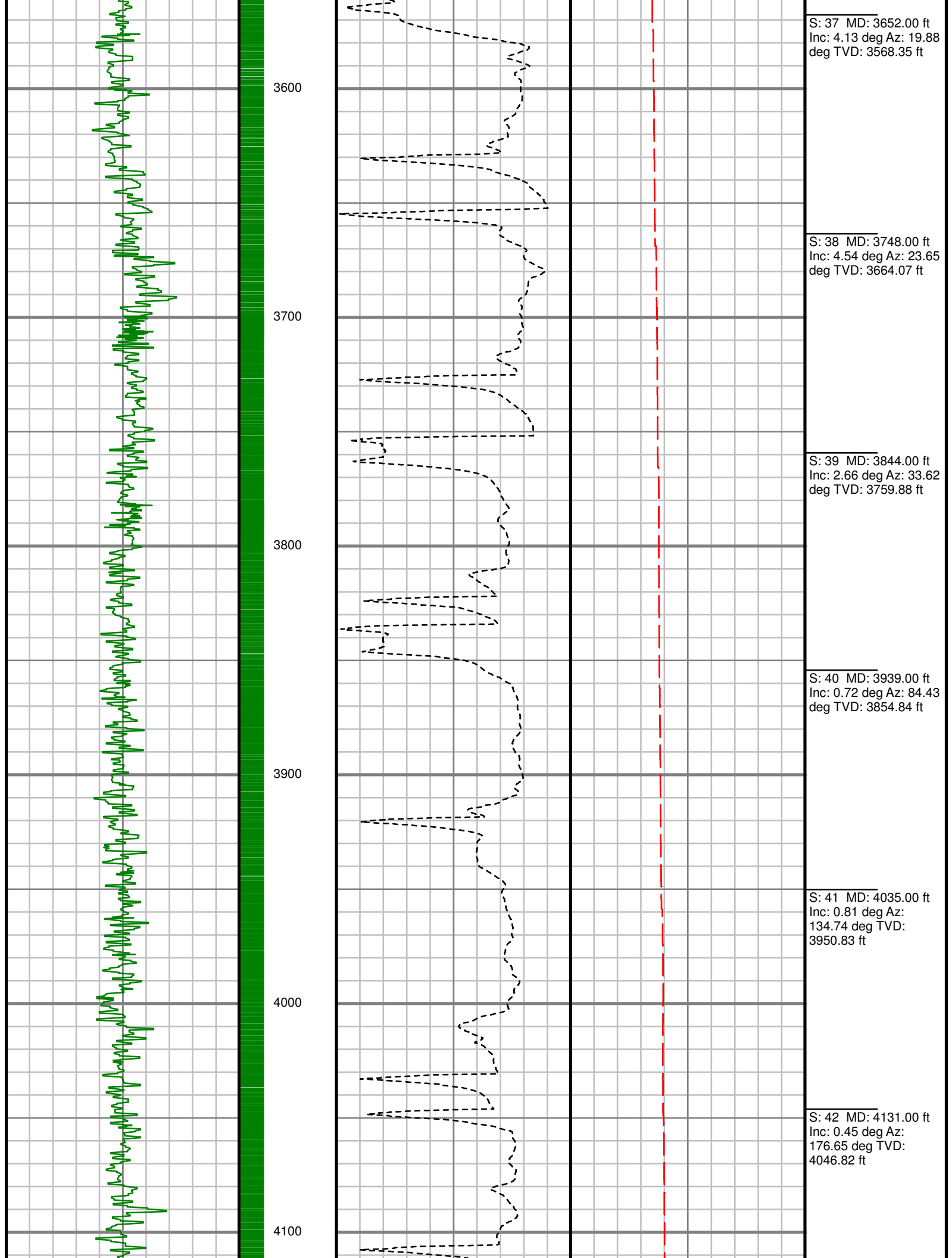
S: 28 MD: 2789.00 ft
Inc: 14.39 deg Az:
13.13 deg TVD:
2717.87 ft

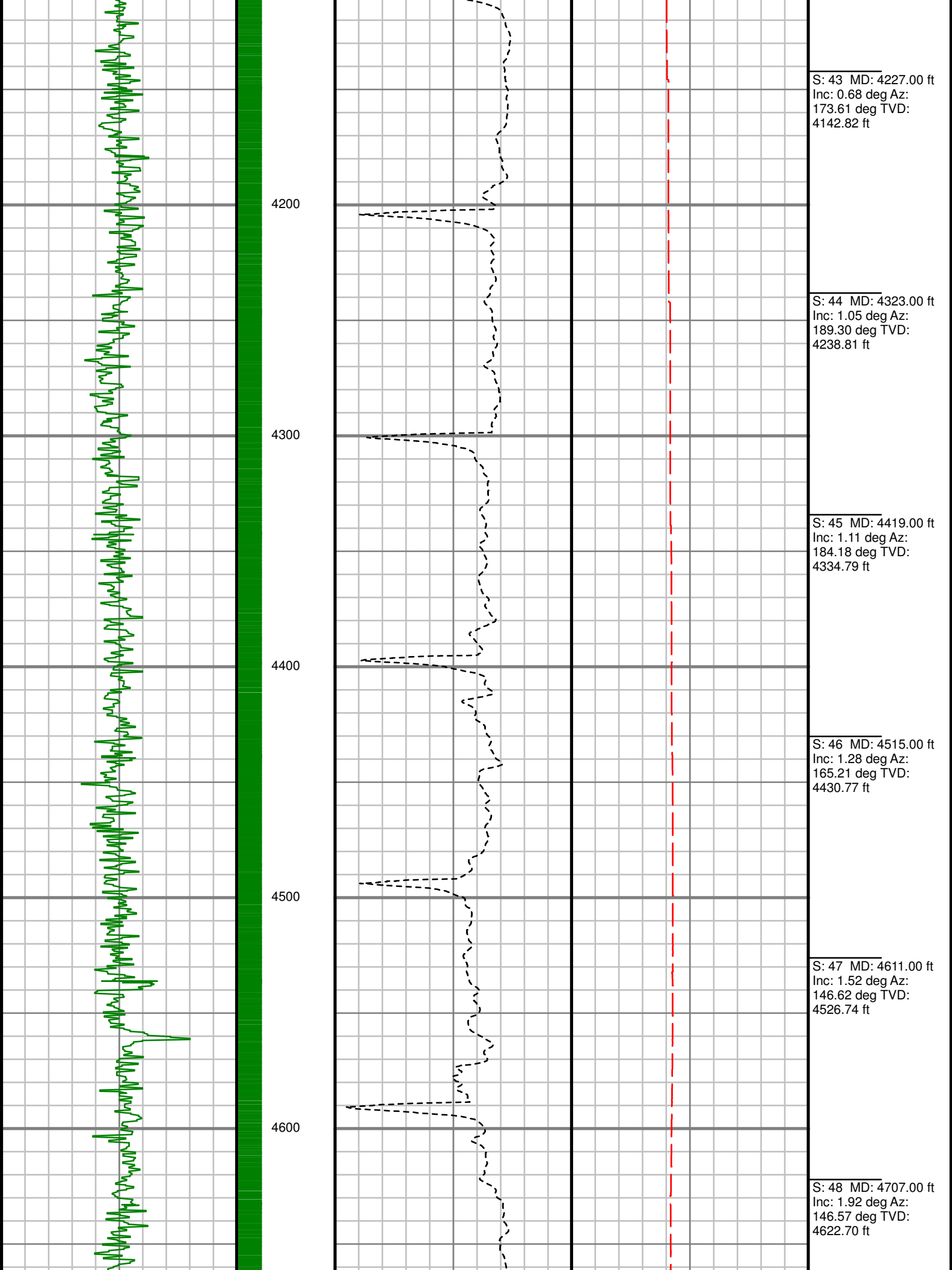
S: 29 MD: 2885.00 ft
Inc: 12.00 deg Az:
18.06 deg TVD:
2811.33 ft

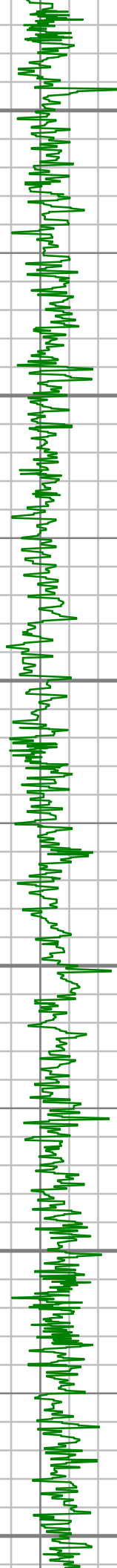
S: 30 MD: 2981.00 ft
Inc: 10.75 deg Az:
14.72 deg TVD:
2905.44 ft

S: 31 MD: 3077.00 ft
Inc: 10.86 deg Az:









4700

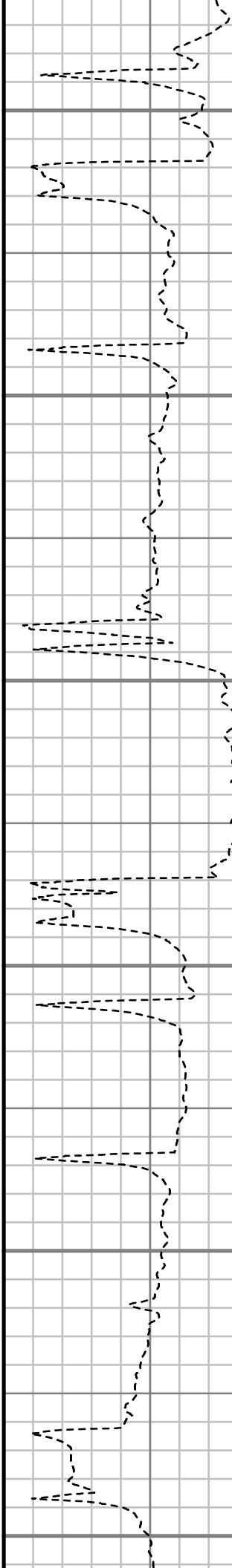
4800

4900

5000

5100

5200



S: 49 MD: 4803.00 ft
Inc: 0.88 deg Az: 99.31
deg TVD: 4718.67 ft

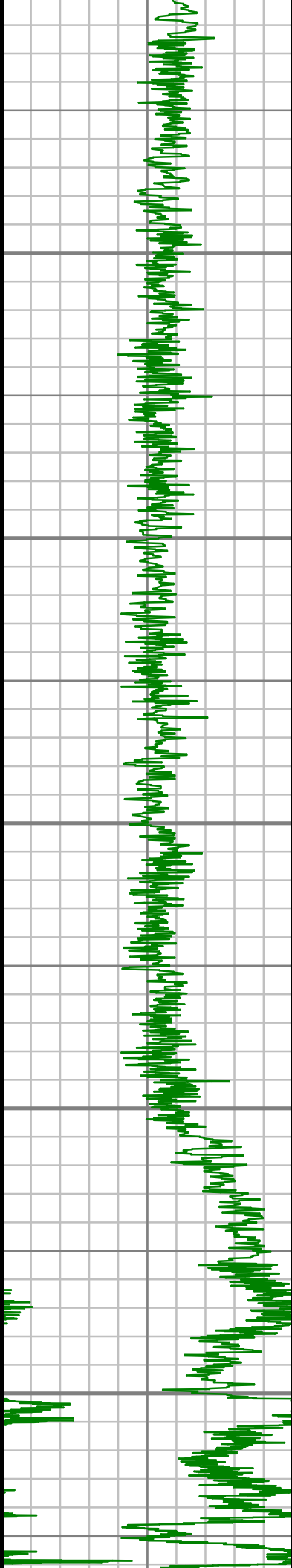
S: 50 MD: 4899.00 ft
Inc: 0.55 deg Az: 79.16
deg TVD: 4814.66 ft

S: 51 MD: 4995.00 ft
Inc: 0.59 deg Az: 123.02 deg TVD:
4910.66 ft

S: 52 MD: 5091.00 ft
Inc: 1.13 deg Az: 315.82 deg TVD:
5006.66 ft

S: 53 MD: 5187.00 ft
Inc: 0.42 deg Az: 320.18 deg TVD:
5102.65 ft

S: 54 MD: 5283.00 ft
Inc: 2.66 deg Az: 86.25



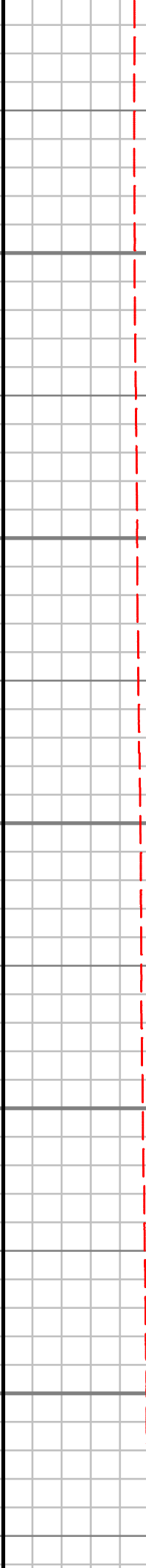
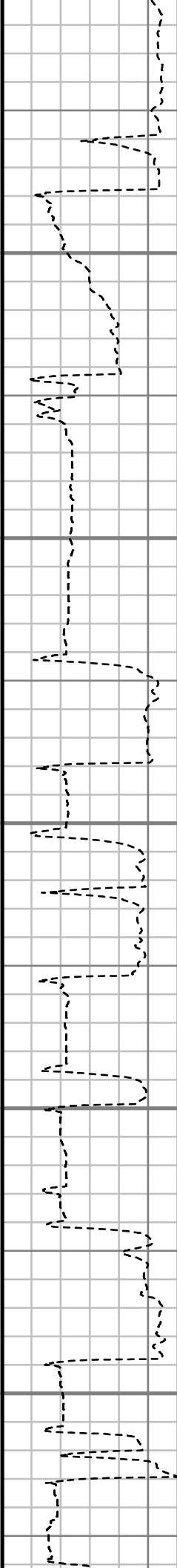
5300

5400

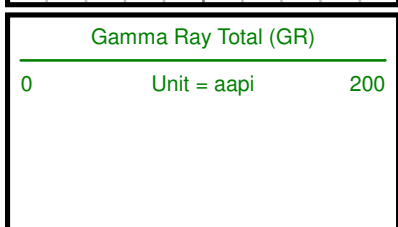
5500

5600

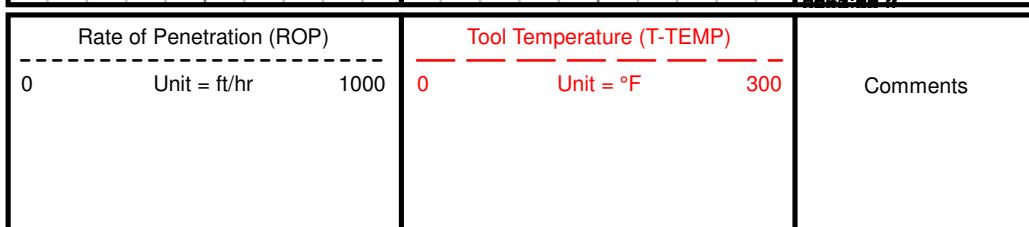
5700



deg TVD: 5198.61 ft	
<hr/>	
S: 55	MD: 5379.00 ft Inc: 5.99 deg Az: 70.77 deg TVD: 5294.33 ft
<hr/>	
S: 56	MD: 5475.00 ft Inc: 22.67 deg Az: 81.77 deg TVD: 5387.03 ft
<hr/>	
S: 57	MD: 5570.00 ft Inc: 32.43 deg Az: 83.32 deg TVD: 5471.16 ft
<hr/>	
S: 58	MD: 5666.00 ft Inc: 35.18 deg Az: 82.58 deg TVD: 5550.92 ft
<hr/>	
S: 59	MD: 5762.00 ft Inc: 47.51 deg Az: 88.59 deg TVD: 5622.88 ft
<hr/>	
S: 60	MD: 5858.00 ft Inc: 50.84 deg Az: 89.87 deg TVD: 5685.63 ft
<hr/>	
S: 61	MD: 5954.00 ft Inc: 62.42 deg Az: 90.42 deg TVD: 5738.35 ft



TRUE VERTICAL DEPTH
1:600 (ft)



SURVEY REPORT

ANSCHUTZ EQUUS FARMS 5-61-35-3340B

COMPUTED SURVEYS

CUSTOMER HIGHPOINT RESOURCES
PROJECT ANSCHUTZ EQUUS FARMS
5-61-35-3340B
FIELD WATTENBERG

WELL INFORMATION

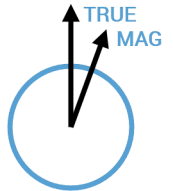
Lat/Long 40° 21' 17.03" N, 104° 11' 12.17" W
Northing 1,374,779.19 ft
Easting 3,365,994.64 ft
UWI 05-123-49226

MAP INFORMATION

North Reference True North
Grid Correction
System US State Plane 1983
Datum North American Datum 1983 (GRS 1980)
Map Zone Colorado North: 0501

VERTICAL SECTION REFERENCE

+N/-S 0 ft
+E/-W 0 ft
Proposal Direction 89.83°
Calculation Method Minimum Curvature



GEOMAGNETIC REFERENCE INFORMATION

Local Gravity: 999.110 mG [computed]

MD	MODEL	DATE	DECLINATION	MAG TO TRUE
0-15912 ft	HDGM2018	17 Apr 2019	8.08°	add 8.08°

WELL NOTES

OPERATORS

A FARQUHAR, A. FARQUHAR, M BAILY, M SUTTER, M. BAILY, M. SUTTER

MD	Inc	Azim	TVD	VS	+N/-S	+E/-W	DLS
ft	deg	deg	ft	ft	ft	ft	°/100ft
0.00	0.00	0.00	0.00	0.00	0.00	0.00	Invalid
242.00	0.58	227.59	242.00	-0.91	-0.83	-0.90	0.24
334.00	0.65	38.76	333.99	-0.92	-0.73	-0.92	1.33
426.00	2.11	23.91	425.97	0.10	1.22	0.09	1.62
546.00	4.51	22.44	545.76	2.81	7.61	2.79	2.01
610.00	5.48	18.40	609.51	4.76	12.83	4.72	1.60
702.00	6.85	22.34	700.98	8.25	22.07	8.19	1.56
793.00	6.90	18.76	791.33	12.10	32.27	12.01	0.47
885.00	6.90	16.95	882.66	15.52	42.78	15.39	0.24
947.00	6.42	20.53	944.24	17.84	49.59	17.70	1.02
1068.00	7.13	22.21	1064.40	23.09	62.88	22.91	0.60
1159.00	7.52	24.32	1154.65	27.71	73.53	27.49	0.52
1255.00	10.06	25.93	1249.52	34.01	86.80	33.75	2.66
1351.00	11.41	15.11	1343.85	40.20	103.51	39.89	2.52
1447.00	10.27	13.13	1438.13	44.67	121.01	44.31	1.24
1543.00	10.06	12.19	1532.62	48.43	137.54	48.03	0.28
1639.00	11.51	12.17	1626.93	52.27	155.10	51.81	1.52
1735.00	13.23	10.16	1720.69	56.29	175.28	55.77	1.84
1830.00	17.03	11.04	1812.38	60.95	199.64	60.35	4.01
1926.00	20.19	9.29	1903.35	66.40	229.80	65.72	3.35

MD ft	Inc deg	Azim deg	TVD ft	VS ft	+N/-S ft	+E/-W ft	DLS °/100ft
2022.00	20.43	7.47	1993.38	71.36	262.77	70.58	0.70
2118.00	18.93	11.93	2083.78	76.85	294.61	75.97	2.21
2214.00	18.92	22.00	2174.62	85.99	324.29	85.03	3.40
2310.00	19.59	23.68	2265.24	98.37	353.46	97.32	0.91
2406.00	20.98	18.27	2355.30	110.31	384.53	109.17	2.43
2502.00	20.92	14.92	2444.95	120.22	417.41	118.98	1.25
2597.00	18.88	15.60	2534.27	128.81	448.62	127.48	2.16
2693.00	17.30	14.44	2625.52	136.63	477.40	135.22	1.69
2789.00	14.39	13.13	2717.87	142.98	502.85	141.49	3.06
2885.00	12.00	18.06	2811.33	148.85	523.95	147.29	2.75
2981.00	10.75	14.72	2905.44	154.27	542.09	152.66	1.47
3077.00	10.86	20.58	2999.74	159.77	559.22	158.12	1.15
3172.00	10.77	22.04	3093.06	166.30	575.83	164.60	0.30
3268.00	9.79	11.62	3187.52	171.36	592.14	169.61	2.19
3364.00	9.17	12.44	3282.21	174.70	607.61	172.90	0.65
3460.00	7.01	9.58	3377.25	177.37	620.86	175.52	2.29
3556.00	5.42	10.26	3472.68	179.18	631.10	177.31	1.66
3652.00	4.13	19.88	3568.35	181.19	638.82	179.29	1.58
3748.00	4.54	23.65	3664.07	183.91	645.55	181.99	0.51
3844.00	2.66	33.62	3759.88	186.68	650.89	184.75	2.06

MD ft	Inc deg	Azim deg	TVD ft	VS ft	+N/-S ft	+E/-W ft	DLS °/100ft
3939.00	0.72	84.43	3854.84	188.50	652.78	186.56	2.39
4035.00	0.81	134.74	3950.83	189.58	652.36	187.64	0.68
4131.00	0.45	176.65	4046.82	190.08	651.51	188.15	0.59
4227.00	0.68	173.61	4142.82	190.16	650.57	188.23	0.24
4323.00	1.05	189.30	4238.81	190.08	649.14	188.16	0.45
4419.00	1.11	184.18	4334.79	189.87	647.34	187.95	0.12
4515.00	1.28	165.21	4430.77	190.07	645.38	188.15	0.44
4611.00	1.52	146.62	4526.74	191.03	643.28	189.13	0.53
4707.00	1.92	146.57	4622.70	192.61	640.88	190.71	0.41
4803.00	0.88	99.31	4718.67	194.22	639.42	192.32	1.53
4899.00	0.55	79.16	4814.66	195.40	639.39	193.51	0.43
4995.00	0.59	123.02	4910.66	196.27	639.21	194.37	0.44
5091.00	1.13	315.82	5006.66	196.02	639.62	194.13	1.78
5187.00	0.42	320.18	5102.65	195.14	640.56	193.24	0.74
5283.00	2.66	86.25	5198.61	197.14	640.98	195.24	3.05
5379.00	5.99	70.77	5294.33	204.09	642.78	202.19	3.64
5475.00	22.67	81.77	5387.03	227.31	647.10	225.39	17.53
5570.00	32.43	83.32	5471.16	270.85	652.70	268.91	10.30
5666.00	35.18	82.58	5550.92	323.86	659.26	321.91	2.90
5762.00	47.51	88.59	5622.88	386.96	663.73	384.99	13.48

MD ft	Inc deg	Azim deg	TVD ft	VS ft	+N/-S ft	+E/-W ft	DLS °/100ft
5858.00	50.84	89.87	5685.63	459.58	664.69	457.61	3.61
5954.00	62.42	90.42	5738.35	539.62	664.46	537.65	12.07
6050.00	72.44	92.00	5775.15	628.12	662.55	626.16	10.55
6146.00	76.92	92.75	5800.51	720.59	658.71	718.64	4.72
6184.00	78.53	92.01	5808.59	757.69	657.17	755.74	4.66
6335.00	85.93	92.96	5828.99	907.03	650.68	905.11	4.94
6380.00	85.73	92.07	5832.26	951.86	648.71	949.94	2.02
6431.00	88.02	91.32	5835.03	1002.76	647.20	1000.84	4.71
6476.00	88.69	90.23	5836.32	1047.73	646.60	1045.82	2.86
6527.00	89.50	90.57	5837.13	1098.72	646.24	1096.81	1.71
6622.00	90.13	90.33	5837.44	1193.72	645.50	1191.81	0.72
6718.00	90.24	89.72	5837.13	1289.72	645.46	1287.81	0.64
6814.00	90.40	90.01	5836.59	1385.71	645.68	1383.80	0.35
6910.00	90.81	90.55	5835.58	1481.70	645.21	1479.80	0.70
7006.00	90.91	90.44	5834.15	1577.69	644.38	1575.78	0.16
7102.00	91.58	90.70	5832.06	1673.66	643.43	1671.75	0.75
7198.00	91.01	89.42	5829.89	1769.63	643.34	1767.73	1.46
7294.00	88.79	88.38	5830.06	1865.61	645.19	1863.70	2.55
7389.00	90.20	89.76	5830.90	1960.59	646.73	1958.68	2.08
7486.00	89.33	87.13	5831.30	2057.55	649.36	2055.64	2.85

MD ft	Inc deg	Azim deg	TVD ft	VS ft	+N/-S ft	+E/-W ft	DLS °/100ft
7581.00	89.56	88.12	5832.22	2152.48	653.29	2150.55	1.07
7677.00	89.73	89.93	5832.81	2248.46	654.92	2246.53	1.90
7773.00	89.29	89.15	5833.62	2344.46	655.69	2342.52	0.94
7869.00	88.02	88.07	5835.87	2440.40	658.02	2438.46	1.74
7964.00	88.82	89.75	5838.49	2535.35	659.82	2533.41	1.95
8060.00	90.74	91.05	5838.85	2631.34	659.15	2629.40	2.41
8156.00	90.07	90.64	5838.18	2727.32	657.74	2725.38	0.82
8252.00	90.00	89.92	5838.12	2823.32	657.28	2821.38	0.75
8348.00	91.38	90.42	5836.97	2919.31	656.99	2917.37	1.53
8443.00	90.94	89.69	5835.05	3014.29	656.90	3012.35	0.90
8539.00	90.57	89.91	5833.78	3110.28	657.24	3108.34	0.44
8635.00	89.87	89.89	5833.42	3206.28	657.41	3204.34	0.73
8731.00	90.24	90.34	5833.33	3302.28	657.22	3300.34	0.61
8827.00	89.50	90.21	5833.56	3398.27	656.76	3396.34	0.78
8923.00	89.87	90.29	5834.09	3494.27	656.34	3492.33	0.39
9019.00	89.83	90.25	5834.35	3590.26	655.89	3588.33	0.06
9115.00	89.87	90.43	5834.60	3686.26	655.31	3684.33	0.20
9211.00	89.97	90.37	5834.74	3782.25	654.64	3780.33	0.12
9307.00	90.10	89.12	5834.68	3878.25	655.06	3876.33	1.31
9403.00	90.24	88.38	5834.40	3974.23	657.15	3972.30	0.79

MD ft	Inc deg	Azim deg	TVD ft	VS ft	+N/-S ft	+E/-W ft	DLS °/100ft
9499.00	90.54	89.61	5833.76	4070.22	658.84	4068.28	1.32
9595.00	90.24	88.72	5833.11	4166.21	660.24	4164.27	0.97
9691.00	91.71	88.74	5831.47	4262.18	662.36	4260.23	1.54
9786.00	90.17	90.40	5829.91	4357.16	663.07	4355.21	2.39
9882.00	89.56	89.46	5830.14	4453.15	663.19	4451.21	1.16
9978.00	88.69	89.76	5831.60	4549.14	663.84	4547.19	0.96
10074.00	89.83	89.66	5832.84	4645.13	664.32	4643.18	1.19
10170.00	89.06	90.23	5833.77	4741.13	664.41	4739.18	1.00
10266.00	87.98	90.80	5836.25	4837.08	663.55	4835.14	1.27
10362.00	89.43	89.76	5838.42	4933.05	663.07	4931.11	1.86
10458.00	90.00	90.52	5838.89	5029.05	662.84	5027.11	0.98
10554.00	91.04	90.22	5838.02	5125.04	662.22	5123.10	1.13
10646.00	89.70	90.97	5837.43	5217.03	661.27	5215.09	1.67
10738.00	90.94	90.30	5836.92	5309.01	660.25	5307.08	1.53
10830.00	90.60	90.17	5835.68	5401.00	659.87	5399.07	0.39
10922.00	89.80	92.59	5835.35	5492.96	657.66	5491.03	2.77
11014.00	89.90	93.08	5835.60	5584.84	653.11	5582.92	0.54
11106.00	90.44	92.43	5835.33	5676.71	648.69	5674.81	0.92
11167.00	89.36	90.82	5835.44	5737.68	646.97	5735.79	3.17
11198.00	90.27	89.57	5835.54	5768.68	646.86	5766.79	4.97

MD ft	Inc deg	Azim deg	TVD ft	VS ft	+N/-S ft	+E/-W ft	DLS °/100ft
11290.00	89.60	90.63	5835.64	5860.68	646.70	5858.78	1.36
11381.00	90.00	91.38	5835.96	5951.66	645.11	5949.77	0.94
11473.00	90.00	88.01	5835.96	6043.64	645.60	6041.75	3.66
11565.00	89.80	88.01	5836.13	6135.60	648.79	6133.70	0.22
11657.00	89.53	88.80	5836.66	6227.57	651.35	6225.66	0.91
11753.00	90.60	89.21	5836.55	6323.55	653.02	6321.64	1.20
11848.00	90.00	88.06	5836.05	6418.53	655.28	6416.61	1.38
11944.00	89.87	90.15	5836.16	6514.52	656.78	6512.60	2.18
12040.00	89.06	88.92	5837.06	6610.51	657.57	6608.59	1.53
12136.00	90.54	90.95	5837.40	6706.50	657.67	6704.58	2.62
12232.00	91.21	90.27	5835.94	6802.48	656.65	6800.56	1.00
12328.00	90.07	89.84	5834.87	6898.47	656.57	6896.55	1.27
12424.00	91.07	88.91	5833.91	6994.46	657.62	6992.54	1.43
12520.00	91.24	87.64	5831.97	7090.40	660.52	7088.47	1.34
12616.00	91.28	90.38	5829.86	7186.36	662.18	7184.43	2.86
12712.00	92.08	88.99	5827.05	7282.32	662.70	7280.38	1.67
12807.00	89.50	90.15	5825.75	7377.30	663.41	7375.36	2.98
12903.00	90.00	88.62	5826.17	7473.29	664.44	7471.35	1.68
12999.00	89.90	87.85	5826.25	7569.25	667.39	7567.30	0.81
13095.00	89.73	90.58	5826.56	7665.24	668.70	7663.29	2.85

MD ft	Inc deg	Azim deg	TVD ft	VS ft	+N/-S ft	+E/-W ft	DLS °/100ft
13191.00	89.36	90.79	5827.32	7761.22	667.56	7759.28	0.44
13287.00	88.86	92.66	5828.81	7857.15	664.67	7855.22	2.02
13321.00	88.99	92.09	5829.45	7891.11	663.27	7889.18	1.71
13383.00	88.49	91.90	5830.81	7953.06	661.11	7951.13	0.87
13479.00	89.06	89.21	5832.86	8049.02	660.18	8047.09	2.86
13575.00	89.29	90.99	5834.24	8145.00	660.01	8143.08	1.87
13671.00	87.21	90.26	5837.17	8240.94	658.97	8239.02	2.30
13734.00	86.54	90.42	5840.60	8303.85	658.59	8301.93	1.10
13766.00	88.59	90.42	5841.96	8335.81	658.35	8333.90	6.42
13862.00	89.40	90.68	5843.64	8431.79	657.43	8429.88	0.88
13958.00	90.00	90.72	5844.15	8527.78	656.27	8525.87	0.63
14054.00	91.74	89.79	5842.69	8623.76	655.84	8621.85	2.06
14150.00	90.77	89.78	5840.58	8719.73	656.20	8717.83	1.01
14246.00	90.50	89.15	5839.51	8815.73	657.09	8813.81	0.71
14342.00	91.28	88.67	5838.02	8911.70	658.91	8909.79	0.95
14438.00	91.31	88.06	5835.85	9007.64	661.65	9005.72	0.64
14534.00	90.94	88.93	5833.97	9103.60	664.18	9101.67	0.98
14630.00	91.04	88.80	5832.31	9199.57	666.08	9197.63	0.17
14726.00	90.87	88.72	5830.71	9295.54	668.16	9293.60	0.19
14822.00	88.52	89.10	5831.22	9391.52	669.99	9389.57	2.48

MD ft	Inc deg	Azim deg	TVD ft	VS ft	+N/-S ft	+E/-W ft	DLS °/100ft
14918.00	89.90	91.24	5832.54	9487.50	669.70	9485.56	2.65
15014.00	89.73	90.41	5832.85	9583.49	668.31	9581.54	0.89
15110.00	89.97	89.23	5833.10	9679.48	668.62	9677.54	1.25
15206.00	90.27	89.28	5832.91	9775.48	669.88	9773.53	0.32
15301.00	90.47	87.66	5832.29	9870.45	672.42	9868.49	1.71
15397.00	90.54	88.55	5831.45	9966.40	675.59	9964.44	0.93
15493.00	91.48	88.63	5829.76	10062.36	677.95	10060.39	0.99
15589.00	92.65	88.81	5826.30	10158.28	680.09	10156.30	1.24
15685.00	90.54	90.90	5823.63	10254.23	680.33	10252.26	3.09
15781.00	91.37	89.90	5822.03	10350.21	679.67	10348.24	1.36
15877.00	92.22	90.29	5819.02	10446.16	679.51	10444.19	0.97
15912.00	92.55	89.61	5817.57	10481.13	679.54	10479.16	2.16

2" = 100' TVD