



## Survey Certification

7327 West Barton Road  
Casper, WY 82604  
(307)-472-6621 Fax (307) 472-5439

Operator	HighPoint Resources
Well Name & No.	Anschutz Equus Farms 5-61-35-3340B
API #	05-123-49226
County & State	Weld County, CO
SDI Job #	OP.018035 / OP.018267
Rig	Cade 24
Survey Date	7-May-2019

I, Seth M. Burstad, having personal knowledge of all the facts, hereby certify that the attached directional survey run from a measured depth of 0 feet to a measured depth of 15912 feet is true and correct as determined from all available records.

*Seth M. Burstad*

Signature

7-May-2019

Date

### Seth M. Burstad

Rockies Region Well Planner  
Scientific Drilling - Rocky Mountain District



Project: Weld County, CO NAD 83  
Site: Anschutz Equus Farms Fed 5-61-34 NESE Pad  
Well: Anschutz Equus Farms 5-61-35-3340B  
Wellbore: OH  
Design: OH



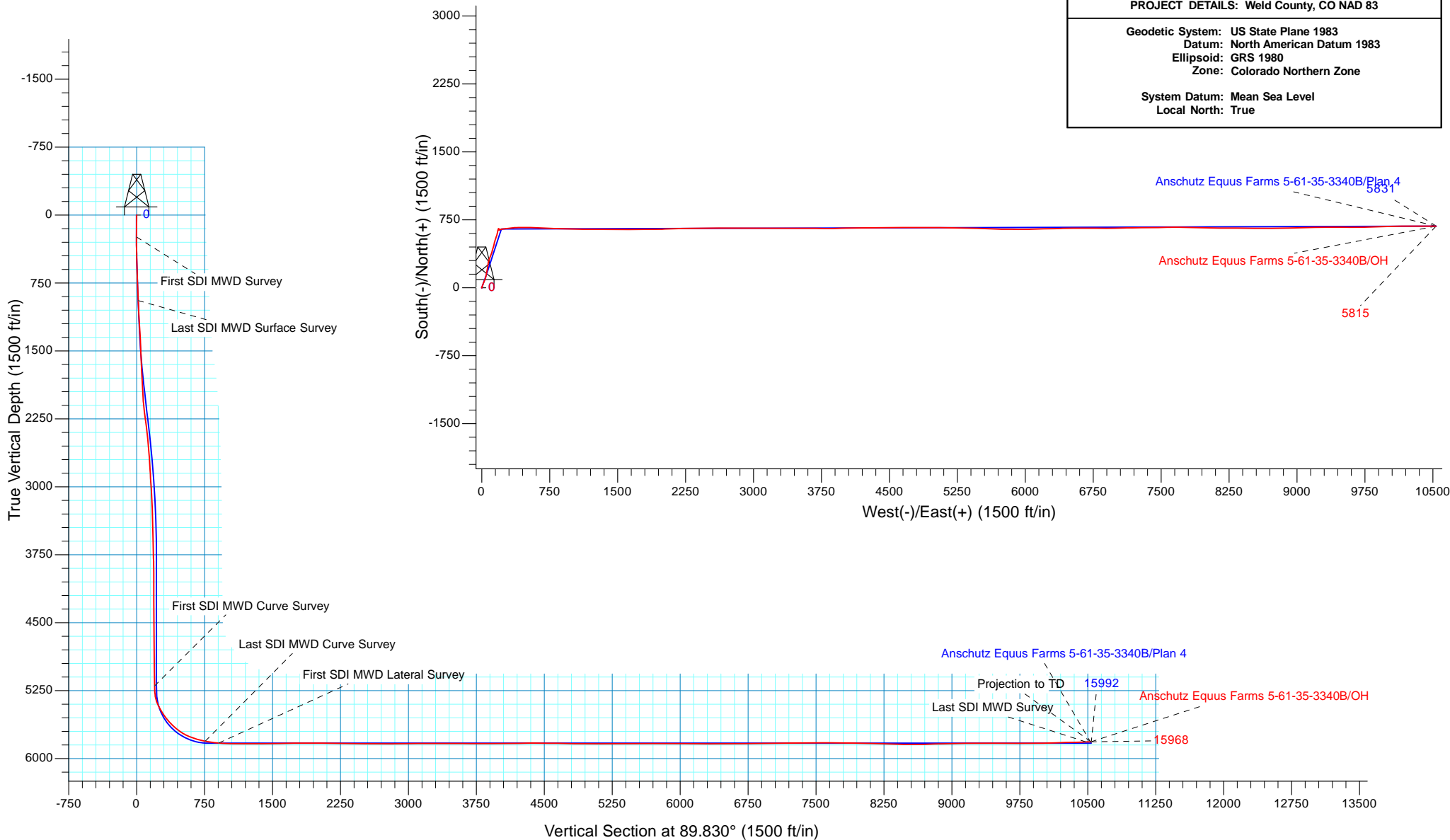
WELL DETAILS: Anschutz Equus Farms 5-61-35-3340B

GL 4479.6' & KB 16.5 @ 4496.10ft (Cade 24)			
4479.60			
Northing	Easting	Latitude	Longitude
1374779.16	3365994.64	40° 21' 17.029 N	104° 11' 12.170 W

ANNOTATIONS									
TVD	MD	Inc	Azi	+N/-S	+E/-W	VSect	Departure	Annotation	
242.00	242.00	0.58	227.600	-0.83	-0.90	-0.91	1.22	First SDI MWD Survey	
944.24	947.00	6.42	20.550	49.59	17.71	17.86	55.94	Last SDI MWD Surface Survey	
5198.62	5283.00	2.66	86.250	640.93	195.24	197.15	708.90	First SDI MWD Curve Survey	
5808.59	6184.00	78.53	92.010	657.12	755.76	757.71	1271.30	Last SDI MWD Curve Survey	
5828.99	6335.00	85.93	92.960	650.62	905.13	907.05	1420.81	First SDI MWD Lateral Survey	
5817.52	15912.00	92.55	89.610	679.44	10479.18	10481.15	10996.46	Last SDI MWD Survey	
5815.03	15968.00	92.55	89.610	679.82	10535.12	10537.09	11052.40	Projection to TD	

PROJECT DETAILS: Weld County, CO NAD 83

Geodetic System: US State Plane 1983  
Datum: North American Datum 1983  
Ellipsoid: GRS 1980  
Zone: Colorado Northern Zone  
  
System Datum: Mean Sea Level  
Local North: True





# HighPoint Resources

Weld County, CO NAD 83

Anschutz Equus Farms Fed 5-61-34 NESE Pad

Anschutz Equus Farms 5-61-35-3340B

OH

Design: OH

## Standard Survey Report

07 May, 2019



<b>Company:</b>	HighPoint Resources	<b>Local Co-ordinate Reference:</b>	Well Anschutz Equus Farms 5-61-35-3340B
<b>Project:</b>	Weld County, CO NAD 83	<b>TVD Reference:</b>	GL 4479.6' & KB 16.5 @ 4496.10ft (Cade 24)
<b>Site:</b>	Anschutz Equus Farms Fed 5-61-34 NESE Pad	<b>MD Reference:</b>	GL 4479.6' & KB 16.5 @ 4496.10ft (Cade 24)
<b>Well:</b>	Anschutz Equus Farms 5-61-35-3340B	<b>North Reference:</b>	True
<b>Wellbore:</b>	OH	<b>Survey Calculation Method:</b>	Minimum Curvature
<b>Design:</b>	OH	<b>Database:</b>	Casper District

<b>Project</b>	Weld County, CO NAD 83		
<b>Map System:</b>	US State Plane 1983	<b>System Datum:</b>	Mean Sea Level
<b>Geo Datum:</b>	North American Datum 1983		
<b>Map Zone:</b>	Colorado Northern Zone		

<b>Site</b>	Anschutz Equus Farms Fed 5-61-34 NESE Pad, Site Center : Anschutz Equus Farms 5-61-34-2532BS		
<b>Site Position:</b>		<b>Northing:</b>	1,374,782.51 usft
<b>From:</b>	Lat/Long	<b>Easting:</b>	3,366,009.33 usft
<b>Position Uncertainty:</b>	0.00 ft	<b>Slot Radius:</b>	13.200 in
		<b>Latitude:</b>	40° 21' 17.060 N
		<b>Longitude:</b>	104° 11' 11.980 W
		<b>Grid Convergence:</b>	0.85 °

<b>Well</b>	Anschutz Equus Farms 5-61-35-3340B, 1686' FSL 329' FEL Sec 34 T5N R61W		
<b>Well Position</b>	<b>+N/-S</b>	0.00 ft	<b>Northing:</b> 1,374,779.17 usft
	<b>+E/-W</b>	0.00 ft	<b>Easting:</b> 3,365,994.64 usft
<b>Position Uncertainty</b>	0.00 ft	<b>Wellhead Elevation:</b>	0.00 ft
		<b>Ground Level:</b>	4,479.60 ft

<b>Wellbore</b>	OH				
<b>Magnetics</b>	<b>Model Name</b>	<b>Sample Date</b>	<b>Declination (°)</b>	<b>Dip Angle (°)</b>	<b>Field Strength (nT)</b>
	HDGM	4/16/2019	8.10	66.95	52,185

<b>Design</b>	OH				
<b>Audit Notes:</b>					
<b>Version:</b>	1.0	<b>Phase:</b>	ACTUAL	<b>Tie On Depth:</b>	0.00
<b>Vertical Section:</b>	<b>Depth From (TVD) (ft)</b>	<b>+N/-S (ft)</b>	<b>+E/-W (ft)</b>	<b>Direction (°)</b>	
	0.00	0.00	0.00		89.830

<b>Survey Program</b>	<b>Date</b>	5/7/2019			
<b>From (ft)</b>	<b>To (ft)</b>	<b>Survey (Wellbore)</b>	<b>Tool Name</b>	<b>Description</b>	
242.00	947.00	Survey #1 - Surface (OH)	OWSG MWD	OWSG MWD - Standard	
1,068.00	6,184.00	Survey #2 - Intermediate (OH)	OWSG MWD	OWSG MWD - Standard	
6,335.00	15,968.00	Survey #3 - Lateral (OH)	OWSG MWD	OWSG MWD - Standard	

<b>Survey</b>									
<b>Measured Depth (ft)</b>	<b>Inclination (°)</b>	<b>Azimuth (°)</b>	<b>Vertical Depth (ft)</b>	<b>+N/-S (ft)</b>	<b>+E/-W (ft)</b>	<b>Vertical Section (ft)</b>	<b>Dogleg Rate (°/100ft)</b>	<b>Build Rate (°/100ft)</b>	<b>Turn Rate (°/100ft)</b>
0.00	0.00	0.000	0.00	0.00	0.00	0.00	0.00	0.00	0.00
242.00	0.58	227.600	242.00	-0.83	-0.90	-0.91	0.24	0.24	0.00
<b>First SDI MWD Survey</b>									
334.00	0.65	38.770	333.99	-0.73	-0.92	-0.92	1.33	0.08	186.05
426.00	2.11	23.930	425.97	1.22	0.09	0.10	1.62	1.59	-16.13
546.00	4.51	22.460	545.76	7.60	2.79	2.81	2.00	2.00	-1.23
610.00	5.48	18.420	609.51	12.83	4.72	4.76	1.61	1.52	-6.31
702.00	6.85	22.350	700.98	22.07	8.19	8.26	1.56	1.49	4.27
793.00	6.90	18.770	791.32	32.26	12.02	12.11	0.47	0.05	-3.93

<b>Company:</b>	HighPoint Resources	<b>Local Co-ordinate Reference:</b>	Well Anschutz Equus Farms 5-61-35-3340B
<b>Project:</b>	Weld County, CO NAD 83	<b>TVD Reference:</b>	GL 4479.6' & KB 16.5 @ 4496.10ft (Cade 24)
<b>Site:</b>	Anschutz Equus Farms Fed 5-61-34 NESE Pad	<b>MD Reference:</b>	GL 4479.6' & KB 16.5 @ 4496.10ft (Cade 24)
<b>Well:</b>	Anschutz Equus Farms 5-61-35-3340B	<b>North Reference:</b>	True
<b>Wellbore:</b>	OH	<b>Survey Calculation Method:</b>	Minimum Curvature
<b>Design:</b>	OH	<b>Database:</b>	Casper District

Survey									
Measured Depth (ft)	Inclination (°)	Azimuth (°)	Vertical Depth (ft)	+N/-S (ft)	+E/-W (ft)	Vertical Section (ft)	Dogleg Rate (°/100ft)	Build Rate (°/100ft)	Turn Rate (°/100ft)
885.00	6.90	16.970	882.66	42.78	15.41	15.53	0.24	0.00	-1.96
947.00	6.42	20.550	944.24	49.59	17.71	17.86	1.02	-0.77	5.77
Last SDI MWD Surface Survey									
1,068.00	7.13	22.210	1,064.39	62.88	22.92	23.11	0.61	0.59	1.37
1,159.00	7.52	24.320	1,154.65	73.53	27.51	27.73	0.52	0.43	2.32
1,255.00	10.06	25.930	1,249.52	86.80	33.76	34.02	2.66	2.65	1.68
1,351.00	11.41	15.110	1,343.84	103.51	39.91	40.21	2.52	1.41	-11.27
1,447.00	10.27	13.130	1,438.13	121.01	44.33	44.69	1.25	-1.19	-2.06
1,543.00	10.06	12.190	1,532.62	137.54	48.04	48.45	0.28	-0.22	-0.98
1,639.00	11.51	12.170	1,626.93	155.10	51.83	52.29	1.51	1.51	-0.02
1,735.00	13.23	10.160	1,720.69	175.28	55.79	56.31	1.85	1.79	-2.09
1,830.00	17.03	11.040	1,812.38	199.64	60.37	60.96	4.01	4.00	0.93
1,926.00	20.19	9.290	1,903.35	229.80	65.74	66.42	3.34	3.29	-1.82
2,022.00	20.43	7.470	1,993.39	262.76	70.59	71.37	0.70	0.25	-1.90
2,118.00	18.93	11.930	2,083.78	294.61	75.99	76.86	2.21	-1.56	4.65
2,214.00	18.92	22.000	2,174.62	324.28	85.04	86.00	3.40	-0.01	10.49
2,310.00	19.59	23.680	2,265.25	353.45	97.34	98.38	0.91	0.70	1.75
2,406.00	20.98	18.270	2,355.30	384.52	109.19	110.33	2.43	1.45	-5.64
2,502.00	20.92	14.920	2,444.95	417.40	118.99	120.23	1.25	-0.06	-3.49
2,597.00	18.88	15.600	2,534.28	448.60	127.49	128.82	2.16	-2.15	0.72
2,693.00	17.30	14.440	2,625.53	477.38	135.23	136.64	1.69	-1.65	-1.21
2,789.00	14.39	13.130	2,717.87	502.83	141.50	142.99	3.05	-3.03	-1.36
2,885.00	12.00	18.060	2,811.33	523.93	147.30	148.86	2.75	-2.49	5.14
2,981.00	10.75	14.720	2,905.45	542.08	152.67	154.28	1.47	-1.30	-3.48
3,077.00	10.86	20.580	2,999.75	559.21	158.13	159.78	1.15	0.11	6.10
3,172.00	10.77	22.040	3,093.06	575.82	164.60	166.31	0.30	-0.09	1.54
3,268.00	9.79	11.620	3,187.53	592.13	169.61	171.37	2.19	-1.02	-10.85
3,364.00	9.17	12.440	3,282.22	607.59	172.91	174.71	0.66	-0.65	0.85
3,460.00	7.01	9.580	3,377.26	620.84	175.53	177.37	2.29	-2.25	-2.98
3,556.00	5.42	10.260	3,472.69	631.08	177.31	179.18	1.66	-1.66	0.71
3,652.00	4.13	19.880	3,568.35	638.79	179.29	181.19	1.58	-1.34	10.02
3,748.00	4.54	23.650	3,664.08	645.52	181.99	183.91	0.52	0.43	3.93
3,844.00	2.66	33.620	3,759.89	650.86	184.75	186.68	2.06	-1.96	10.39
3,939.00	0.72	84.430	3,854.84	652.75	186.57	188.50	2.39	-2.04	53.48
4,035.00	0.81	134.740	3,950.84	652.33	187.65	189.58	0.68	0.09	52.41
4,131.00	0.45	176.650	4,046.83	651.48	188.15	190.09	0.59	-0.38	43.66
4,227.00	0.68	173.610	4,142.83	650.54	188.24	190.17	0.24	0.24	-3.17
4,323.00	1.05	189.300	4,238.82	649.10	188.16	190.08	0.45	0.39	16.34
4,419.00	1.11	184.180	4,334.80	647.31	187.95	189.87	0.12	0.06	-5.33
4,515.00	1.28	165.210	4,430.78	645.34	188.16	190.07	0.45	0.18	-19.76
4,611.00	1.52	146.620	4,526.75	643.24	189.13	191.04	0.53	0.25	-19.36
4,707.00	1.92	146.570	4,622.71	640.84	190.72	192.62	0.42	0.42	-0.05
4,803.00	0.88	99.310	4,718.68	639.37	192.33	194.23	1.53	-1.08	-49.23

<b>Company:</b>	HighPoint Resources	<b>Local Co-ordinate Reference:</b>	Well Anschutz Equus Farms 5-61-35-3340B
<b>Project:</b>	Weld County, CO NAD 83	<b>TVD Reference:</b>	GL 4479.6' & KB 16.5 @ 4496.10ft (Cade 24)
<b>Site:</b>	Anschutz Equus Farms Fed 5-61-34 NESE Pad	<b>MD Reference:</b>	GL 4479.6' & KB 16.5 @ 4496.10ft (Cade 24)
<b>Well:</b>	Anschutz Equus Farms 5-61-35-3340B	<b>North Reference:</b>	True
<b>Wellbore:</b>	OH	<b>Survey Calculation Method:</b>	Minimum Curvature
<b>Design:</b>	OH	<b>Database:</b>	Casper District

Survey									
Measured Depth (ft)	Inclination (°)	Azimuth (°)	Vertical Depth (ft)	+N/-S (ft)	+E/-W (ft)	Vertical Section (ft)	Dogleg Rate (°/100ft)	Build Rate (°/100ft)	Turn Rate (°/100ft)
4,899.00	0.55	79.160	4,814.67	639.34	193.51	195.41	0.43	-0.34	-20.99
4,995.00	0.59	123.020	4,910.67	639.16	194.38	196.27	0.45	0.04	45.69
5,091.00	1.13	315.820	5,006.66	639.57	194.13	196.03	1.78	0.56	-174.17
5,187.00	0.42	320.180	5,102.65	640.52	193.25	195.15	0.74	-0.74	4.54
5,283.00	2.66	86.250	5,198.62	640.93	195.24	197.15	3.05	2.33	131.32
First SDI MWD Curve Survey									
5,379.00	5.99	70.770	5,294.34	642.73	202.20	204.11	3.64	3.47	-16.13
5,475.00	22.67	81.770	5,387.03	647.06	225.41	227.32	17.53	17.38	11.46
5,570.00	32.43	83.320	5,471.16	652.66	268.93	270.87	10.30	10.27	1.63
5,666.00	35.18	82.580	5,550.92	659.22	321.93	323.88	2.90	2.86	-0.77
5,762.00	47.51	88.590	5,622.88	663.69	385.01	386.97	13.48	12.84	6.26
5,858.00	50.84	89.870	5,685.64	664.64	457.63	459.60	3.61	3.47	1.33
5,954.00	62.42	90.420	5,738.35	664.41	537.67	539.64	12.07	12.06	0.57
6,050.00	72.44	92.000	5,775.15	662.50	626.18	628.14	10.55	10.44	1.65
6,146.00	76.92	92.750	5,800.51	658.66	718.66	720.61	4.73	4.67	0.78
6,184.00	78.53	92.010	5,808.59	657.12	755.76	757.71	4.64	4.24	-1.95
Last SDI MWD Curve Survey									
6,335.00	85.93	92.960	5,828.99	650.62	905.13	907.05	4.94	4.90	0.63
First SDI MWD Lateral Survey									
6,380.00	85.73	92.070	5,832.26	648.65	949.96	951.88	2.02	-0.44	-1.98
6,431.00	88.02	91.320	5,835.04	647.15	1,000.86	1,002.78	4.72	4.49	-1.47
6,476.00	88.69	90.230	5,836.33	646.54	1,045.84	1,047.75	2.84	1.49	-2.42
6,527.00	89.50	90.570	5,837.14	646.18	1,096.83	1,098.74	1.72	1.59	0.67
6,622.00	90.13	90.330	5,837.45	645.44	1,191.83	1,193.74	0.71	0.66	-0.25
6,718.00	90.24	89.720	5,837.14	645.39	1,287.83	1,289.73	0.65	0.11	-0.64
6,814.00	90.40	90.010	5,836.60	645.62	1,383.82	1,385.73	0.35	0.17	0.30
6,910.00	90.81	90.550	5,835.59	645.15	1,479.82	1,481.72	0.71	0.43	0.56
7,006.00	90.91	90.440	5,834.15	644.32	1,575.80	1,577.71	0.15	0.10	-0.11
7,102.00	91.58	90.700	5,832.06	643.37	1,671.77	1,673.68	0.75	0.70	0.27
7,198.00	91.01	89.420	5,829.89	643.27	1,767.75	1,769.65	1.46	-0.59	-1.33
7,294.00	88.79	88.380	5,830.06	645.11	1,863.72	1,865.63	2.55	-2.31	-1.08
7,389.00	90.20	89.760	5,830.90	646.65	1,958.70	1,960.61	2.08	1.48	1.45
7,486.00	89.33	87.130	5,831.29	649.28	2,055.65	2,057.57	2.86	-0.90	-2.71
7,581.00	89.56	88.120	5,832.21	653.22	2,150.57	2,152.50	1.07	0.24	1.04
7,677.00	89.73	89.930	5,832.81	654.85	2,246.55	2,248.48	1.89	0.18	1.89
7,773.00	89.29	89.150	5,833.63	655.62	2,342.54	2,344.48	0.93	-0.46	-0.81
7,869.00	88.02	88.070	5,835.88	657.95	2,438.48	2,440.42	1.74	-1.32	-1.13
7,964.00	88.82	89.750	5,838.50	659.76	2,533.42	2,535.37	1.96	0.84	1.77
8,060.00	90.74	91.050	5,838.87	659.09	2,629.42	2,631.36	2.42	2.00	1.35
8,156.00	90.07	90.640	5,838.19	657.67	2,725.40	2,727.34	0.82	-0.70	-0.43
8,252.00	90.00	89.920	5,838.13	657.20	2,821.40	2,823.34	0.75	-0.07	-0.75
8,348.00	91.38	90.420	5,836.98	656.92	2,917.39	2,919.33	1.53	1.44	0.52
8,443.00	90.94	89.690	5,835.05	656.83	3,012.37	3,014.30	0.90	-0.46	-0.77
8,539.00	90.57	89.910	5,833.79	657.16	3,108.36	3,110.30	0.45	-0.39	0.23

<b>Company:</b>	HighPoint Resources	<b>Local Co-ordinate Reference:</b>	Well Anschutz Equus Farms 5-61-35-3340B
<b>Project:</b>	Weld County, CO NAD 83	<b>TVD Reference:</b>	GL 4479.6' & KB 16.5 @ 4496.10ft (Cade 24)
<b>Site:</b>	Anschutz Equus Farms Fed 5-61-34 NESE Pad	<b>MD Reference:</b>	GL 4479.6' & KB 16.5 @ 4496.10ft (Cade 24)
<b>Well:</b>	Anschutz Equus Farms 5-61-35-3340B	<b>North Reference:</b>	True
<b>Wellbore:</b>	OH	<b>Survey Calculation Method:</b>	Minimum Curvature
<b>Design:</b>	OH	<b>Database:</b>	Casper District

Survey									
Measured Depth (ft)	Inclination (°)	Azimuth (°)	Vertical Depth (ft)	+N/-S (ft)	+E/-W (ft)	Vertical Section (ft)	Dogleg Rate (°/100ft)	Build Rate (°/100ft)	Turn Rate (°/100ft)
8,635.00	89.87	89.890	5,833.42	657.33	3,204.36	3,206.29	0.73	-0.73	-0.02
8,731.00	90.24	90.340	5,833.33	657.14	3,300.36	3,302.29	0.61	0.39	0.47
8,827.00	89.50	90.210	5,833.55	656.68	3,396.36	3,398.29	0.78	-0.77	-0.14
8,923.00	89.87	90.290	5,834.07	656.26	3,492.35	3,494.29	0.39	0.39	0.08
9,019.00	89.83	90.250	5,834.33	655.80	3,588.35	3,590.28	0.06	-0.04	-0.04
9,115.00	89.87	90.430	5,834.58	655.24	3,684.35	3,686.28	0.19	0.04	0.19
9,211.00	89.97	90.370	5,834.71	654.56	3,780.35	3,782.27	0.12	0.10	-0.06
9,307.00	90.10	89.120	5,834.65	654.99	3,876.34	3,878.27	1.31	0.14	-1.30
9,403.00	90.24	88.380	5,834.37	657.09	3,972.32	3,974.25	0.78	0.15	-0.77
9,499.00	90.54	89.610	5,833.71	658.77	4,068.30	4,070.24	1.32	0.31	1.28
9,595.00	90.24	88.720	5,833.06	660.17	4,164.29	4,166.23	0.98	-0.31	-0.93
9,691.00	91.71	88.740	5,831.43	662.30	4,260.25	4,262.19	1.53	1.53	0.02
9,786.00	90.17	90.400	5,829.87	663.01	4,355.23	4,357.17	2.38	-1.62	1.75
9,882.00	89.56	89.460	5,830.09	663.13	4,451.22	4,453.17	1.17	-0.64	-0.98
9,978.00	88.69	89.760	5,831.56	663.78	4,547.21	4,549.16	0.96	-0.91	0.31
10,074.00	89.83	89.660	5,832.80	664.27	4,643.20	4,645.15	1.19	1.19	-0.10
10,170.00	89.06	90.230	5,833.73	664.36	4,739.19	4,741.14	1.00	-0.80	0.59
10,266.00	87.98	90.800	5,836.21	663.50	4,835.16	4,837.10	1.27	-1.13	0.59
10,362.00	89.43	89.760	5,838.38	663.03	4,931.13	4,933.07	1.86	1.51	-1.08
10,458.00	90.00	90.520	5,838.86	662.79	5,027.12	5,029.07	0.99	0.59	0.79
10,554.00	91.04	90.220	5,837.99	662.17	5,123.12	5,125.06	1.13	1.08	-0.31
10,646.00	89.70	90.970	5,837.39	661.22	5,215.11	5,217.05	1.67	-1.46	0.82
10,738.00	90.94	90.300	5,836.88	660.20	5,307.10	5,309.03	1.53	1.35	-0.73
10,830.00	90.60	90.170	5,835.64	659.82	5,399.09	5,401.02	0.40	-0.37	-0.14
10,922.00	89.80	92.590	5,835.32	657.60	5,491.05	5,492.98	2.77	-0.87	2.63
11,014.00	89.90	93.080	5,835.56	653.05	5,582.94	5,584.85	0.54	0.11	0.53
11,106.00	90.44	92.430	5,835.29	648.63	5,674.83	5,676.73	0.92	0.59	-0.71
11,167.00	89.36	90.820	5,835.39	646.90	5,735.81	5,737.70	3.18	-1.77	-2.64
11,198.00	90.27	89.570	5,835.49	646.80	5,766.80	5,768.70	4.99	2.94	-4.03
11,290.00	89.60	90.630	5,835.60	646.64	5,858.80	5,860.69	1.36	-0.73	1.15
11,381.00	90.00	91.380	5,835.92	645.04	5,949.79	5,951.67	0.93	0.44	0.82
11,473.00	90.00	88.010	5,835.92	645.53	6,041.77	6,043.66	3.66	0.00	-3.66
11,565.00	89.80	88.010	5,836.08	648.72	6,133.72	6,135.61	0.22	-0.22	0.00
11,657.00	89.53	88.800	5,836.62	651.29	6,225.68	6,227.58	0.91	-0.29	0.86
11,753.00	90.60	89.210	5,836.51	652.95	6,321.66	6,323.57	1.19	1.11	0.43
11,848.00	90.00	88.060	5,836.01	655.22	6,416.63	6,418.55	1.37	-0.63	-1.21
11,944.00	89.87	90.150	5,836.12	656.71	6,512.61	6,514.53	2.18	-0.14	2.18
12,040.00	89.06	88.920	5,837.01	657.49	6,608.60	6,610.53	1.53	-0.84	-1.28
12,136.00	90.54	90.950	5,837.35	657.60	6,704.60	6,706.52	2.62	1.54	2.11
12,232.00	91.21	90.270	5,835.88	656.58	6,800.58	6,802.50	0.99	0.70	-0.71
12,328.00	90.07	89.840	5,834.81	656.49	6,896.57	6,898.49	1.27	-1.19	-0.45
12,424.00	91.07	88.910	5,833.86	657.54	6,992.56	6,994.48	1.42	1.04	-0.97
12,520.00	91.24	87.640	5,831.92	660.42	7,088.49	7,090.42	1.33	0.18	-1.32
12,616.00	91.28	90.380	5,829.81	662.08	7,184.45	7,186.38	2.85	0.04	2.85

<b>Company:</b>	HighPoint Resources	<b>Local Co-ordinate Reference:</b>	Well Anschutz Equus Farms 5-61-35-3340B
<b>Project:</b>	Weld County, CO NAD 83	<b>TVD Reference:</b>	GL 4479.6' & KB 16.5 @ 4496.10ft (Cade 24)
<b>Site:</b>	Anschutz Equus Farms Fed 5-61-34 NESE Pad	<b>MD Reference:</b>	GL 4479.6' & KB 16.5 @ 4496.10ft (Cade 24)
<b>Well:</b>	Anschutz Equus Farms 5-61-35-3340B	<b>North Reference:</b>	True
<b>Wellbore:</b>	OH	<b>Survey Calculation Method:</b>	Minimum Curvature
<b>Design:</b>	OH	<b>Database:</b>	Casper District

Survey									
Measured Depth (ft)	Inclination (°)	Azimuth (°)	Vertical Depth (ft)	+N/-S (ft)	+E/-W (ft)	Vertical Section (ft)	Dogleg Rate (°/100ft)	Build Rate (°/100ft)	Turn Rate (°/100ft)
12,712.00	92.08	88.990	5,826.99	662.61	7,280.40	7,282.33	1.67	0.83	-1.45
12,807.00	89.50	90.150	5,825.68	663.32	7,375.38	7,377.31	2.98	-2.72	1.22
12,903.00	90.00	88.620	5,826.10	664.35	7,471.37	7,473.31	1.68	0.52	-1.59
12,999.00	89.90	87.850	5,826.19	667.31	7,567.32	7,569.27	0.81	-0.10	-0.80
13,095.00	89.73	90.580	5,826.50	668.62	7,663.30	7,665.25	2.85	-0.18	2.84
13,191.00	89.36	90.790	5,827.26	667.48	7,759.29	7,761.24	0.44	-0.39	0.22
13,287.00	88.86	92.660	5,828.75	664.59	7,855.23	7,857.17	2.02	-0.52	1.95
13,321.00	88.99	92.090	5,829.39	663.18	7,889.20	7,891.13	1.72	0.38	-1.68
13,383.00	88.49	91.900	5,830.75	661.02	7,951.15	7,953.07	0.86	-0.81	-0.31
13,479.00	89.06	89.210	5,832.81	660.09	8,047.11	8,049.03	2.86	0.59	-2.80
13,575.00	89.29	90.990	5,834.19	659.92	8,143.10	8,145.02	1.87	0.24	1.85
13,671.00	87.21	90.260	5,837.12	658.88	8,239.04	8,240.96	2.30	-2.17	-0.76
13,734.00	86.54	90.420	5,840.55	658.50	8,301.95	8,303.86	1.09	-1.06	0.25
13,766.00	88.59	90.420	5,841.91	658.27	8,333.91	8,335.83	6.41	6.41	0.00
13,862.00	89.40	90.680	5,843.60	657.35	8,429.89	8,431.81	0.89	0.84	0.27
13,958.00	90.00	90.720	5,844.10	656.18	8,525.88	8,527.79	0.63	0.63	0.04
14,054.00	91.74	89.790	5,842.64	655.75	8,621.87	8,623.78	2.06	1.81	-0.97
14,150.00	90.77	89.780	5,840.54	656.11	8,717.84	8,719.75	1.01	-1.01	-0.01
14,246.00	90.50	89.150	5,839.48	657.00	8,813.83	8,815.74	0.71	-0.28	-0.66
14,342.00	91.28	88.670	5,837.98	658.83	8,909.80	8,911.72	0.95	0.81	-0.50
14,438.00	91.31	88.060	5,835.81	661.57	9,005.74	9,007.66	0.64	0.03	-0.64
14,534.00	90.94	88.930	5,833.93	664.09	9,101.69	9,103.62	0.98	-0.39	0.91
14,630.00	91.04	88.800	5,832.27	665.99	9,197.65	9,199.59	0.17	0.10	-0.14
14,726.00	90.87	88.720	5,830.67	668.07	9,293.62	9,295.56	0.20	-0.18	-0.08
14,822.00	88.52	89.100	5,831.18	669.89	9,389.59	9,391.54	2.48	-2.45	0.40
14,918.00	89.90	91.240	5,832.51	669.61	9,485.57	9,487.52	2.65	1.44	2.23
15,014.00	89.73	90.410	5,832.82	668.23	9,581.56	9,583.50	0.88	-0.18	-0.86
15,110.00	89.97	89.230	5,833.07	668.53	9,677.56	9,679.50	1.25	0.25	-1.23
15,206.00	90.27	89.280	5,832.87	669.78	9,773.55	9,775.50	0.32	0.31	0.05
15,301.00	90.47	87.660	5,832.25	672.31	9,868.51	9,870.46	1.72	0.21	-1.71
15,397.00	90.54	88.550	5,831.41	675.49	9,964.46	9,966.42	0.93	0.07	0.93
15,493.00	91.48	88.630	5,829.71	677.85	10,060.41	10,062.38	0.98	0.98	0.08
15,589.00	92.65	88.810	5,826.25	679.99	10,156.32	10,158.30	1.23	1.22	0.19
15,685.00	90.54	90.900	5,823.58	680.23	10,252.27	10,254.25	3.09	-2.20	2.18
15,781.00	91.37	89.900	5,821.98	679.56	10,348.26	10,350.23	1.35	0.86	-1.04
15,877.00	92.22	90.290	5,818.98	679.41	10,444.21	10,446.18	0.97	0.89	0.41
15,912.00	92.55	89.610	5,817.52	679.44	10,479.18	10,481.15	2.16	0.94	-1.94
Last SDI MWD Survey									
15,968.00	92.55	89.610	5,815.03	679.82	10,535.12	10,537.09	0.00	0.00	0.00
Projection to TD									





<b>Company:</b>	HighPoint Resources	<b>Local Co-ordinate Reference:</b>	Well Anschutz Equus Farms 5-61-35-3340B
<b>Project:</b>	Weld County, CO NAD 83	<b>TVD Reference:</b>	GL 4479.6' & KB 16.5 @ 4496.10ft (Cade 24)
<b>Site:</b>	Anschutz Equus Farms Fed 5-61-34 NESE Pad	<b>MD Reference:</b>	GL 4479.6' & KB 16.5 @ 4496.10ft (Cade 24)
<b>Well:</b>	Anschutz Equus Farms 5-61-35-3340B	<b>North Reference:</b>	True
<b>Wellbore:</b>	OH	<b>Survey Calculation Method:</b>	Minimum Curvature
<b>Design:</b>	OH	<b>Database:</b>	Casper District

Design Annotations				
Measured Depth (ft)	Vertical Depth (ft)	Local Coordinates		Comment
		+N/-S (ft)	+E/-W (ft)	
242.00	242.00	-0.83	-0.90	First SDI MWD Survey
947.00	944.24	49.59	17.71	Last SDI MWD Surface Survey
5,283.00	5,198.62	640.93	195.24	First SDI MWD Curve Survey
6,184.00	5,808.59	657.12	755.76	Last SDI MWD Curve Survey
6,335.00	5,828.99	650.62	905.13	First SDI MWD Lateral Survey
15,912.00	5,817.52	679.44	10,479.18	Last SDI MWD Survey
15,968.00	5,815.03	679.82	10,535.12	Projection to TD

Checked By: _____	Approved By: _____	Date: _____
-------------------	--------------------	-------------