



Survey Certification

7327 West Barton Road
Casper, WY 82604
(307)-472-6621 Fax (307) 472-5439

Operator	HighPoint Resources
Well Name & No.	Anschutz Equus Farms 5-61-35-4841B
API #	05-123-49225
County & State	Weld County, CO
SDI Job #	OP.018091
Rig	Cade 24
Survey Date	28-Apr-2019

I, Seth M. Burstad, having personal knowledge of all the facts, hereby certify that the attached directional survey run from a measured depth of 0 feet to a measured depth of 15888 feet is true and correct as determined from all available records.

Seth M. Burstad

Signature

29-Apr-2019

Date

Seth M. Burstad

Rockies Region Well Planner
Scientific Drilling - Rocky Mountain District



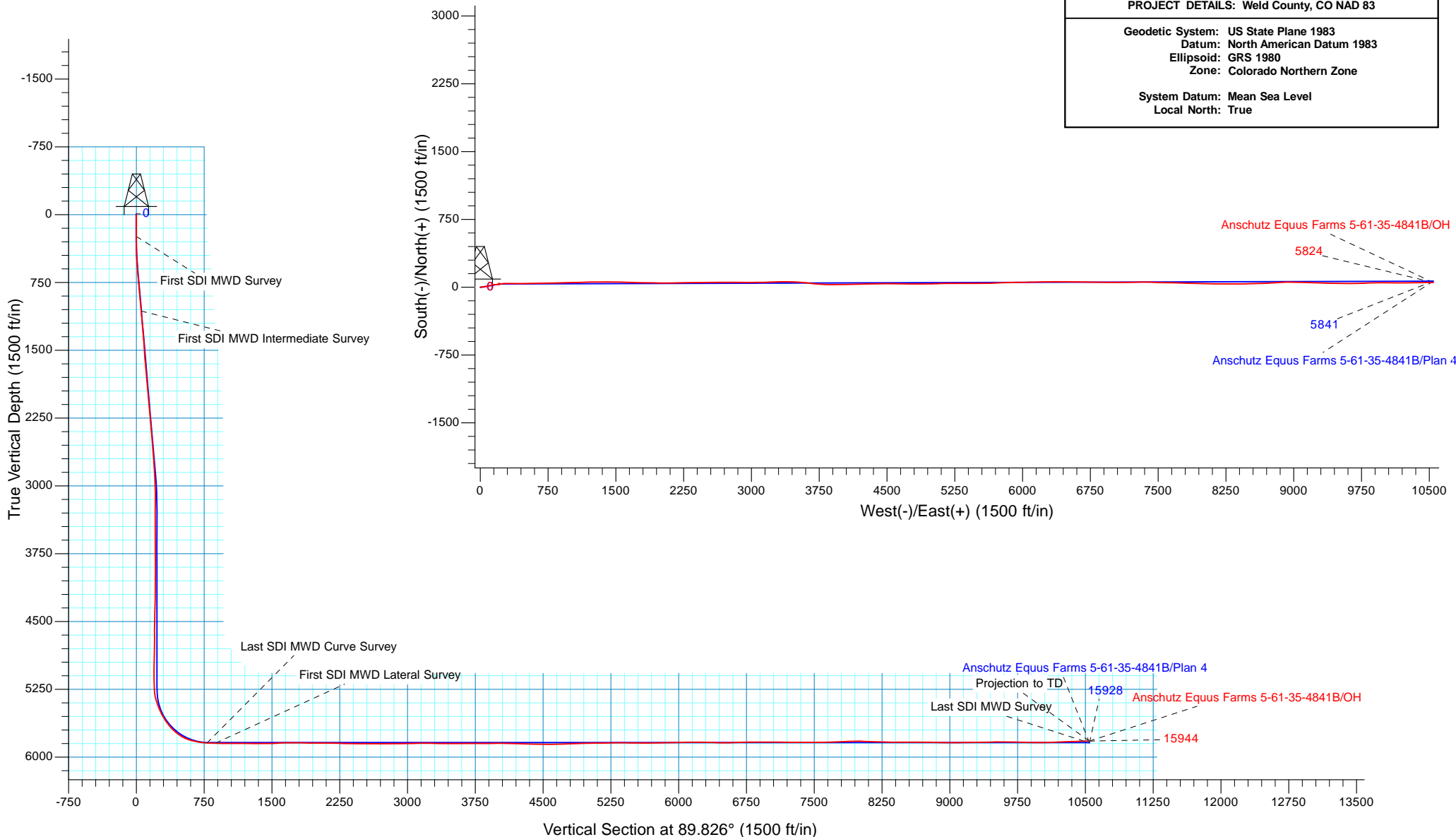
Project: Weld County, CO NAD 83
Site: Anschutz Equus Farms Fed 5-61-34 NESE Pad
Well: Anschutz Equus Farms 5-61-35-4841B
Wellbore: OH
Design: OH



WELL DETAILS: Anschutz Equus Farms 5-61-35-4841B			
GL 4479.6' & KB 8' @ 4487.60ft (Cartel 7)	4479.60		
Northings	Easting	Latitude	Longitude
1374778.96	3365979.94	40° 21' 17.030 N	104° 11' 12.360 W

ANNOTATIONS								
TVD	MD	Inc	Azi	+N/-S	+E/-W	VSection	Departure	Annotation
242.00	242.00	0.38	122.530	-0.43	0.68	0.68	0.80	First SDI MWD Survey
1066.75	1069.00	4.80	83.380	7.11	54.12	54.14	55.23	First SDI MWD Intermediate Survey
5844.98	6176.00	88.66	88.560	45.97	782.16	782.30	831.09	Last SDI MWD Curve Survey
5846.21	6270.00	89.83	87.910	48.87	876.11	876.25	925.08	First SDI MWD Lateral Survey
5825.18	15888.00	91.31	89.220	52.47	10488.37	10488.48	10540.94	Last SDI MWD Survey
5823.90	15944.00	91.31	89.220	53.23	10544.35	10544.46	10596.93	Projection to TD

PROJECT DETAILS: Weld County, CO NAD 83	
Geodetic System:	US State Plane 1983
Datum:	North American Datum 1983
Ellipsoid:	GRS 1980
Zone:	Colorado Northern Zone
System Datum:	Mean Sea Level
Local North:	True





HighPoint Resources

Weld County, CO NAD 83

Anschutz Equus Farms Fed 5-61-34 NESE Pad

Anschutz Equus Farms 5-61-35-4841B

OH

Design: OH

Standard Survey Report

29 April, 2019



Company:	HighPoint Resources	Local Co-ordinate Reference:	Well Anschutz Equus Farms 5-61-35-4841B
Project:	Weld County, CO NAD 83	TVD Reference:	GL 4479.6' & KB 8' @ 4487.60ft (Cartel 7)
Site:	Anschutz Equus Farms Fed 5-61-34 NESE Pad	MD Reference:	GL 4479.6' & KB 8' @ 4487.60ft (Cartel 7)
Well:	Anschutz Equus Farms 5-61-35-4841B	North Reference:	True
Wellbore:	OH	Survey Calculation Method:	Minimum Curvature
Design:	OH	Database:	Casper District

Project	Weld County, CO NAD 83		
Map System:	US State Plane 1983	System Datum:	Mean Sea Level
Geo Datum:	North American Datum 1983		
Map Zone:	Colorado Northern Zone		

Site	Anschutz Equus Farms Fed 5-61-34 NESE Pad, Site Center : Anschutz Equus Farms 5-61-34-2532BS				
Site Position:		Northing:	1,374,782.51 usft	Latitude:	40° 21' 17.060 N
From:	Lat/Long	Easting:	3,366,009.33 usft	Longitude:	104° 11' 11.980 W
Position Uncertainty:	0.00 ft	Slot Radius:	13.200 in	Grid Convergence:	0.85 °

Well	Anschutz Equus Farms 5-61-35-4841B, 1686' FSL 345' FEL Sec 34 T5N R61W					
Well Position	+N/-S	0.00 ft	Northing:	1,374,778.96 usft	Latitude:	40° 21' 17.030 N
	+E/-W	0.00 ft	Easting:	3,365,979.93 usft	Longitude:	104° 11' 12.360 W
Position Uncertainty		0.00 ft	Wellhead Elevation:	0.00 ft	Ground Level:	4,479.60 ft

Wellbore	OH				
Magnetics	Model Name	Sample Date	Declination (°)	Dip Angle (°)	Field Strength (nT)
	HDGM	4/16/2019	8.10	66.95	52,185

Design	OH				
Audit Notes:					
Version:	1.0	Phase:	ACTUAL	Tie On Depth:	0.00
Vertical Section:	Depth From (TVD) (ft)	+N/-S (ft)	+E/-W (ft)	Direction (°)	
	0.00	0.00	0.00	89.826	

Survey Program	Date	4/29/2019			
From (ft)	To (ft)	Survey (Wellbore)	Tool Name	Description	
242.00	943.00	Survey #1 - Surface (OH)	OWSG MWD	OWSG MWD - Standard	
1,069.00	6,176.00	Survey #2 - Intermediate (OH)	OWSG MWD	OWSG MWD - Standard	
6,270.00	15,944.00	Survey #3 - Lateral (OH)	OWSG MWD	OWSG MWD - Standard	

Survey										
Measured Depth (ft)	Inclination (°)	Azimuth (°)	Vertical Depth (ft)	+N/-S (ft)	+E/-W (ft)	Vertical Section (ft)	Dogleg Rate (°/100ft)	Build Rate (°/100ft)	Turn Rate (°/100ft)	
0.00	0.00	0.000	0.00	0.00	0.00	0.00	0.00	0.00	0.00	
242.00	0.38	122.530	242.00	-0.43	0.68	0.68	0.16	0.16	0.00	
First SDI MWD Survey										
334.00	0.45	132.700	334.00	-0.84	1.20	1.20	0.11	0.08	11.05	
426.00	1.48	90.560	425.98	-1.10	2.65	2.65	1.29	1.12	-45.80	
553.00	3.93	80.320	552.83	-0.38	8.58	8.58	1.96	1.93	-8.06	
635.00	5.37	75.490	634.56	1.05	15.07	15.07	1.82	1.76	-5.89	
738.00	5.52	78.250	737.10	3.27	24.59	24.60	0.29	0.15	2.68	
821.00	5.49	84.030	819.71	4.49	32.44	32.46	0.67	-0.04	6.96	

Company:	HighPoint Resources	Local Co-ordinate Reference:	Well Anschutz Equus Farms 5-61-35-4841B
Project:	Weld County, CO NAD 83	TVD Reference:	GL 4479.6' & KB 8' @ 4487.60ft (Cartel 7)
Site:	Anschutz Equus Farms Fed 5-61-34 NESE Pad	MD Reference:	GL 4479.6' & KB 8' @ 4487.60ft (Cartel 7)
Well:	Anschutz Equus Farms 5-61-35-4841B	North Reference:	True
Wellbore:	OH	Survey Calculation Method:	Minimum Curvature
Design:	OH	Database:	Casper District

Survey									
Measured Depth (ft)	Inclination (°)	Azimuth (°)	Vertical Depth (ft)	+N/-S (ft)	+E/-W (ft)	Vertical Section (ft)	Dogleg Rate (°/100ft)	Build Rate (°/100ft)	Turn Rate (°/100ft)
885.00	5.14	83.960	883.44	5.12	38.34	38.35	0.55	-0.55	-0.11
943.00	5.01	82.020	941.21	5.74	43.43	43.45	0.37	-0.22	-3.34
1,069.00	4.80	83.380	1,066.75	7.11	54.12	54.14	0.19	-0.17	1.08
First SDI MWD Intermediate Survey									
1,160.00	5.04	85.420	1,157.41	7.87	61.88	61.91	0.33	0.26	2.24
1,256.00	4.85	84.910	1,253.06	8.57	70.13	70.15	0.20	-0.20	-0.53
1,352.00	4.88	85.290	1,348.71	9.26	78.24	78.27	0.05	0.03	0.40
1,448.00	4.05	78.770	1,444.42	10.26	85.63	85.66	1.01	-0.86	-6.79
1,544.00	4.04	71.440	1,540.18	11.99	92.17	92.20	0.54	-0.01	-7.64
1,640.00	5.47	68.090	1,635.85	14.78	99.62	99.66	1.52	1.49	-3.49
1,736.00	5.03	66.270	1,731.45	18.18	107.71	107.77	0.49	-0.46	-1.90
1,831.00	6.21	77.400	1,825.99	20.98	116.54	116.61	1.69	1.24	11.72
1,927.00	5.41	69.310	1,921.50	23.71	125.84	125.91	1.19	-0.83	-8.43
2,023.00	5.38	76.730	2,017.07	26.34	134.46	134.54	0.73	-0.03	7.73
2,119.00	5.45	89.430	2,112.65	27.42	143.40	143.48	1.25	0.07	13.23
2,215.00	4.72	86.630	2,208.27	27.70	151.90	151.98	0.80	-0.76	-2.92
2,311.00	4.60	85.770	2,303.95	28.21	159.68	159.77	0.14	-0.13	-0.90
2,407.00	4.50	91.610	2,399.65	28.39	167.28	167.37	0.49	-0.10	6.08
2,503.00	5.19	83.360	2,495.31	28.79	175.36	175.45	1.02	0.72	-8.59
2,598.00	4.81	88.190	2,589.95	29.41	183.61	183.70	0.60	-0.40	5.08
2,694.00	4.11	82.150	2,685.66	30.01	191.04	191.13	0.88	-0.73	-6.29
2,790.00	3.85	74.360	2,781.43	31.34	197.55	197.65	0.62	-0.27	-8.11
2,886.00	2.90	60.610	2,877.26	33.41	202.77	202.87	1.29	-0.99	-14.32
2,982.00	2.93	58.280	2,973.13	35.89	206.98	207.08	0.13	0.03	-2.43
3,078.00	1.80	39.420	3,069.05	38.34	210.02	210.14	1.41	-1.18	-19.65
3,173.00	0.20	338.500	3,164.04	39.65	210.91	211.03	1.80	-1.68	-64.13
3,269.00	0.09	257.430	3,260.04	39.79	210.77	210.89	0.21	-0.11	-84.45
3,365.00	0.59	247.820	3,356.03	39.59	210.24	210.36	0.52	0.52	-10.01
3,461.00	0.46	225.370	3,452.03	39.13	209.51	209.63	0.25	-0.14	-23.39
3,557.00	0.17	246.510	3,548.03	38.80	209.10	209.22	0.32	-0.30	22.02
3,653.00	0.33	79.260	3,644.03	38.80	209.25	209.36	0.52	0.17	-174.22
3,749.00	0.48	84.500	3,740.03	38.89	209.92	210.03	0.16	0.16	5.46
3,845.00	0.71	69.070	3,836.02	39.14	210.87	210.99	0.29	0.24	-16.07
3,940.00	1.16	29.190	3,931.01	40.19	211.89	212.01	0.81	0.47	-41.98
4,036.00	0.75	338.730	4,027.00	41.62	212.14	212.26	0.93	-0.43	-52.56
4,132.00	1.41	251.660	4,122.98	41.83	210.79	210.91	1.63	0.69	-90.70
4,228.00	1.22	245.700	4,218.96	41.04	208.74	208.86	0.24	-0.20	-6.21
4,324.00	1.18	234.260	4,314.94	40.04	207.00	207.12	0.25	-0.04	-11.92
4,420.00	1.33	233.470	4,410.91	38.80	205.30	205.42	0.16	0.16	-0.82
4,516.00	1.38	226.490	4,506.89	37.34	203.57	203.68	0.18	0.05	-7.27
4,612.00	1.49	213.800	4,602.86	35.51	202.04	202.15	0.35	0.11	-13.22
4,708.00	1.02	207.090	4,698.83	33.71	200.95	201.06	0.51	-0.49	-6.99
4,804.00	0.60	314.910	4,794.83	33.31	200.21	200.31	1.39	-0.44	112.31

Company:	HighPoint Resources	Local Co-ordinate Reference:	Well Anschutz Equus Farms 5-61-35-4841B
Project:	Weld County, CO NAD 83	TVD Reference:	GL 4479.6' & KB 8' @ 4487.60ft (Cartel 7)
Site:	Anschutz Equus Farms Fed 5-61-34 NESE Pad	MD Reference:	GL 4479.6' & KB 8' @ 4487.60ft (Cartel 7)
Well:	Anschutz Equus Farms 5-61-35-4841B	North Reference:	True
Wellbore:	OH	Survey Calculation Method:	Minimum Curvature
Design:	OH	Database:	Casper District

Survey									
Measured Depth (ft)	Inclination (°)	Azimuth (°)	Vertical Depth (ft)	+N/-S (ft)	+E/-W (ft)	Vertical Section (ft)	Dogleg Rate (°/100ft)	Build Rate (°/100ft)	Turn Rate (°/100ft)
4,900.00	0.53	288.850	4,890.82	33.81	199.43	199.54	0.27	-0.07	-27.15
4,996.00	0.55	259.620	4,986.82	33.87	198.56	198.66	0.28	0.02	-30.45
5,092.00	0.32	292.250	5,082.82	33.88	197.86	197.96	0.34	-0.24	33.99
5,188.00	0.44	297.820	5,178.82	34.16	197.28	197.39	0.13	0.13	5.80
5,284.00	4.83	90.200	5,274.71	34.32	201.00	201.11	5.44	4.57	158.73
5,380.00	16.01	81.600	5,368.98	36.24	218.20	218.31	11.73	11.65	-8.96
5,476.00	24.29	86.330	5,459.03	39.45	251.06	251.18	8.78	8.63	4.93
5,571.00	27.37	89.370	5,544.54	40.94	292.40	292.53	3.53	3.24	3.20
5,667.00	36.88	90.920	5,625.74	40.72	343.39	343.51	9.94	9.91	1.61
5,763.00	46.20	89.230	5,697.52	40.72	406.98	407.10	9.78	9.71	-1.76
5,859.00	54.74	90.560	5,758.57	40.80	480.95	481.07	8.96	8.90	1.39
5,955.00	71.05	89.360	5,802.16	40.93	566.12	566.24	17.03	16.99	-1.25
6,051.00	77.89	88.600	5,827.85	42.58	658.54	658.67	7.17	7.13	-0.79
6,146.00	83.76	88.270	5,842.99	45.15	752.25	752.38	6.19	6.18	-0.35
6,176.00	88.66	88.560	5,844.98	45.97	782.16	782.30	16.36	16.33	0.97
Last SDI MWD Curve Survey									
6,270.00	89.83	87.910	5,846.21	48.87	876.11	876.25	1.42	1.24	-0.69
First SDI MWD Lateral Survey									
6,334.00	88.99	88.800	5,846.87	50.70	940.08	940.23	1.91	-1.31	1.39
6,430.00	89.40	89.300	5,848.22	52.30	1,036.05	1,036.21	0.67	0.43	0.52
6,526.00	89.60	88.070	5,849.06	54.50	1,132.02	1,132.18	1.30	0.21	-1.28
6,622.00	89.76	89.320	5,849.60	56.69	1,227.99	1,228.16	1.31	0.17	1.30
6,718.00	90.03	89.930	5,849.77	57.31	1,323.99	1,324.16	0.69	0.28	0.64
6,814.00	90.37	89.530	5,849.44	57.77	1,419.99	1,420.16	0.55	0.35	-0.42
6,909.00	90.81	90.450	5,848.46	57.78	1,514.98	1,515.15	1.07	0.46	0.97
6,991.00	94.10	93.000	5,844.95	55.32	1,596.85	1,597.01	5.07	4.01	3.11
7,005.00	94.17	93.110	5,843.94	54.58	1,610.80	1,610.96	0.93	0.50	0.79
7,102.00	89.80	91.100	5,840.58	51.02	1,707.65	1,707.79	4.96	-4.51	-2.07
7,197.00	88.99	90.820	5,841.58	49.43	1,802.63	1,802.77	0.90	-0.85	-0.29
7,293.00	87.45	91.000	5,844.56	47.90	1,898.56	1,898.70	1.62	-1.60	0.19
7,389.00	90.77	90.000	5,846.05	47.07	1,994.53	1,994.67	3.61	3.46	-1.04
7,485.00	90.37	89.490	5,845.10	47.49	2,090.53	2,090.66	0.68	-0.42	-0.53
7,581.00	89.13	89.060	5,845.52	48.71	2,186.52	2,186.66	1.37	-1.29	-0.45
7,677.00	87.75	89.120	5,848.13	50.23	2,282.47	2,282.61	1.44	-1.44	0.06
7,772.00	88.86	89.120	5,850.94	51.69	2,377.41	2,377.56	1.17	1.17	0.00
7,868.00	90.03	89.590	5,851.87	52.77	2,473.40	2,473.55	1.31	1.22	0.49
7,964.00	89.90	88.880	5,851.93	54.05	2,569.39	2,569.54	0.75	-0.14	-0.74
8,060.00	90.10	90.460	5,851.93	54.60	2,665.39	2,665.54	1.66	0.21	1.65
8,156.00	89.16	89.860	5,852.55	54.34	2,761.38	2,761.54	1.16	-0.98	-0.63
8,251.00	91.28	90.710	5,852.18	53.86	2,856.37	2,856.53	2.40	2.23	0.89
8,347.00	90.84	90.210	5,850.41	53.09	2,952.35	2,952.50	0.69	-0.46	-0.52
8,443.00	90.70	89.120	5,849.12	53.66	3,048.34	3,048.49	1.14	-0.15	-1.14
8,539.00	91.28	89.430	5,847.46	54.87	3,144.32	3,144.47	0.69	0.60	0.32
8,635.00	88.82	88.000	5,847.38	57.02	3,240.29	3,240.44	2.96	-2.56	-1.49

Company:	HighPoint Resources	Local Co-ordinate Reference:	Well Anschutz Equus Farms 5-61-35-4841B
Project:	Weld County, CO NAD 83	TVD Reference:	GL 4479.6' & KB 8' @ 4487.60ft (Cartel 7)
Site:	Anschutz Equus Farms Fed 5-61-34 NESE Pad	MD Reference:	GL 4479.6' & KB 8' @ 4487.60ft (Cartel 7)
Well:	Anschutz Equus Farms 5-61-35-4841B	North Reference:	True
Wellbore:	OH	Survey Calculation Method:	Minimum Curvature
Design:	OH	Database:	Casper District

Survey									
Measured Depth (ft)	Inclination (°)	Azimuth (°)	Vertical Depth (ft)	+N/-S (ft)	+E/-W (ft)	Vertical Section (ft)	Dogleg Rate (°/100ft)	Build Rate (°/100ft)	Turn Rate (°/100ft)
8,731.00	89.09	88.520	5,849.13	59.94	3,336.23	3,336.39	0.61	0.28	0.54
8,826.00	89.97	91.020	5,849.91	60.32	3,431.21	3,431.38	2.79	0.93	2.63
8,922.00	90.24	94.870	5,849.73	55.39	3,527.07	3,527.22	4.02	0.28	4.01
9,018.00	90.34	95.690	5,849.24	46.55	3,622.66	3,622.78	0.86	0.10	0.85
9,063.00	89.73	97.420	5,849.22	41.42	3,667.36	3,667.47	4.08	-1.36	3.84
9,114.00	90.07	95.680	5,849.31	35.60	3,718.03	3,718.12	3.48	0.67	-3.41
9,210.00	89.70	90.150	5,849.50	30.72	3,813.87	3,813.94	5.77	-0.39	-5.76
9,306.00	90.87	91.280	5,849.02	29.52	3,909.85	3,909.93	1.69	1.22	1.18
9,402.00	90.40	89.080	5,847.96	29.22	4,005.84	4,005.91	2.34	-0.49	-2.29
9,498.00	88.86	88.260	5,848.58	31.45	4,101.81	4,101.89	1.82	-1.60	-0.85
9,594.00	88.22	88.550	5,851.02	34.12	4,197.74	4,197.83	0.73	-0.67	0.30
9,690.00	88.42	89.010	5,853.84	36.16	4,293.68	4,293.77	0.52	0.21	0.48
9,786.00	88.93	89.480	5,856.06	37.43	4,389.64	4,389.74	0.72	0.53	0.49
9,882.00	89.19	89.150	5,857.63	38.57	4,485.62	4,485.72	0.44	0.27	-0.34
9,978.00	89.23	89.960	5,858.96	39.32	4,581.61	4,581.71	0.84	0.04	0.84
10,074.00	92.28	91.570	5,857.69	38.04	4,677.58	4,677.67	3.59	3.18	1.68
10,170.00	92.29	90.310	5,853.86	36.46	4,773.49	4,773.58	1.31	0.01	-1.31
10,266.00	91.91	89.460	5,850.35	36.66	4,869.42	4,869.51	0.97	-0.40	-0.89
10,362.00	91.48	89.660	5,847.51	37.39	4,965.38	4,965.47	0.49	-0.45	0.21
10,458.00	89.60	87.500	5,846.60	39.77	5,061.33	5,061.43	2.98	-1.96	-2.25
10,554.00	91.68	90.260	5,845.53	41.65	5,157.29	5,157.40	3.60	2.17	2.88
10,646.00	91.71	89.990	5,842.81	41.45	5,249.25	5,249.36	0.30	0.03	-0.29
10,738.00	90.17	89.830	5,841.30	41.59	5,341.24	5,341.34	1.68	-1.67	-0.17
10,830.00	88.25	89.170	5,842.57	42.40	5,433.22	5,433.33	2.21	-2.09	-0.72
10,922.00	89.60	90.120	5,844.29	42.97	5,525.20	5,525.31	1.79	1.47	1.03
11,014.00	90.37	89.290	5,844.32	43.44	5,617.20	5,617.30	1.23	0.84	-0.90
11,106.00	89.29	86.860	5,844.59	46.53	5,709.14	5,709.25	2.89	-1.17	-2.64
11,197.00	91.34	88.440	5,844.09	50.26	5,800.05	5,800.18	2.84	2.25	1.74
11,289.00	91.95	89.160	5,841.45	52.19	5,891.99	5,892.12	1.03	0.66	0.78
11,381.00	92.01	88.500	5,838.27	54.06	5,983.92	5,984.05	0.72	0.07	-0.72
11,472.00	91.01	89.840	5,835.87	55.38	6,074.87	6,075.01	1.84	-1.10	1.47
11,564.00	89.66	87.610	5,835.33	57.43	6,166.84	6,166.99	2.83	-1.47	-2.42
11,656.00	89.56	89.850	5,835.96	59.47	6,258.81	6,258.96	2.44	-0.11	2.43
11,752.00	87.88	89.110	5,838.10	60.34	6,354.78	6,354.93	1.91	-1.75	-0.77
11,848.00	88.96	90.140	5,840.75	60.97	6,450.74	6,450.89	1.55	1.13	1.07
11,944.00	91.14	91.180	5,840.67	59.86	6,546.72	6,546.88	2.52	2.27	1.08
12,040.00	91.35	90.850	5,838.58	58.16	6,642.69	6,642.83	0.41	0.22	-0.34
12,136.00	91.64	90.860	5,836.08	56.73	6,738.64	6,738.78	0.30	0.30	0.01
12,232.00	90.54	90.530	5,834.25	55.56	6,834.62	6,834.75	1.20	-1.15	-0.34
12,328.00	90.07	91.640	5,833.74	53.75	6,930.60	6,930.73	1.26	-0.49	1.16
12,424.00	89.53	90.630	5,834.07	51.84	7,026.57	7,026.70	1.19	-0.56	-1.05
12,520.00	89.90	88.580	5,834.55	52.51	7,122.57	7,122.69	2.17	0.39	-2.14
12,616.00	88.79	87.770	5,835.65	55.56	7,218.51	7,218.64	1.43	-1.16	-0.84

Company:	HighPoint Resources	Local Co-ordinate Reference:	Well Anschutz Equus Farms 5-61-35-4841B
Project:	Weld County, CO NAD 83	TVD Reference:	GL 4479.6' & KB 8' @ 4487.60ft (Cartel 7)
Site:	Anschutz Equus Farms Fed 5-61-34 NESE Pad	MD Reference:	GL 4479.6' & KB 8' @ 4487.60ft (Cartel 7)
Well:	Anschutz Equus Farms 5-61-35-4841B	North Reference:	True
Wellbore:	OH	Survey Calculation Method:	Minimum Curvature
Design:	OH	Database:	Casper District

Survey										
Measured Depth (ft)	Inclination (°)	Azimuth (°)	Vertical Depth (ft)	+N/-S (ft)	+E/-W (ft)	Vertical Section (ft)	Dogleg Rate (°/100ft)	Build Rate (°/100ft)	Turn Rate (°/100ft)	
12,712.00	88.52	90.200	5,837.90	57.26	7,314.46	7,314.60	2.55	-0.28	2.53	
12,807.00	90.27	92.170	5,838.91	55.30	7,409.43	7,409.56	2.77	1.84	2.07	
12,903.00	91.44	92.070	5,837.47	51.75	7,505.35	7,505.47	1.22	1.22	-0.10	
12,999.00	89.63	90.210	5,836.58	49.84	7,601.32	7,601.43	2.70	-1.89	-1.94	
13,095.00	93.23	91.280	5,834.18	48.59	7,697.26	7,697.37	3.91	3.75	1.11	
13,190.00	91.51	91.400	5,830.25	46.37	7,792.15	7,792.26	1.81	-1.81	0.13	
13,286.00	92.45	92.770	5,826.94	42.88	7,888.03	7,888.12	1.73	0.98	1.43	
13,382.00	89.70	91.500	5,825.14	39.31	7,983.93	7,984.01	3.16	-2.86	-1.32	
13,478.00	87.88	90.510	5,827.16	37.62	8,079.89	8,079.97	2.16	-1.90	-1.03	
13,574.00	87.95	90.700	5,830.66	36.61	8,175.82	8,175.89	0.21	0.07	0.20	
13,670.00	88.72	89.730	5,833.45	36.25	8,271.78	8,271.85	1.29	0.80	-1.01	
13,766.00	89.60	89.160	5,834.85	37.18	8,367.76	8,367.84	1.09	0.92	-0.59	
13,862.00	89.09	88.810	5,835.95	38.88	8,463.74	8,463.82	0.64	-0.53	-0.36	
13,958.00	90.97	90.140	5,835.90	39.76	8,559.73	8,559.81	2.40	1.96	1.39	
14,054.00	89.80	88.170	5,835.25	41.18	8,655.71	8,655.80	2.39	-1.22	-2.05	
14,150.00	89.30	85.280	5,836.01	46.66	8,751.54	8,751.64	3.06	-0.52	-3.01	
14,245.00	88.59	87.230	5,837.76	52.86	8,846.32	8,846.44	2.18	-0.75	2.05	
14,342.00	89.09	89.240	5,839.72	55.85	8,943.25	8,943.37	2.13	0.52	2.07	
14,437.00	89.70	90.870	5,840.73	55.76	9,038.24	9,038.36	1.83	0.64	1.72	
14,533.00	91.38	92.950	5,839.82	52.56	9,134.17	9,134.29	2.78	1.75	2.17	
14,629.00	90.84	92.740	5,837.96	47.80	9,230.03	9,230.14	0.60	-0.56	-0.22	
14,725.00	91.14	91.120	5,836.30	44.56	9,325.96	9,326.05	1.72	0.31	-1.69	
14,821.00	90.77	90.530	5,834.70	43.18	9,421.94	9,422.02	0.73	-0.39	-0.61	
14,917.00	90.67	90.440	5,833.50	42.37	9,517.93	9,518.01	0.14	-0.10	-0.09	
15,013.00	90.40	90.070	5,832.60	41.94	9,613.92	9,614.00	0.48	-0.28	-0.39	
15,109.00	89.06	89.110	5,833.05	42.63	9,709.91	9,710.00	1.72	-1.40	-1.00	
15,205.00	87.21	86.830	5,836.18	46.03	9,805.79	9,805.89	3.06	-1.93	-2.38	
15,254.00	87.48	87.700	5,838.45	48.36	9,854.68	9,854.79	1.86	0.55	1.78	
15,301.00	88.72	91.140	5,840.00	48.84	9,901.65	9,901.75	7.78	2.64	7.32	
15,397.00	91.65	90.210	5,839.69	47.70	9,997.63	9,997.73	3.20	3.05	-0.97	
15,493.00	91.95	89.690	5,836.68	47.79	10,093.58	10,093.68	0.63	0.31	-0.54	
15,588.00	92.25	89.780	5,833.20	48.23	10,188.52	10,188.62	0.33	0.32	0.09	
15,684.00	91.04	89.740	5,830.44	48.63	10,284.47	10,284.57	1.26	-1.26	-0.04	
15,780.00	91.65	88.540	5,828.19	50.07	10,380.43	10,380.54	1.40	0.64	-1.25	
15,876.00	91.58	88.840	5,825.48	52.26	10,476.37	10,476.48	0.32	-0.07	0.31	
15,888.00	91.31	89.220	5,825.18	52.47	10,488.37	10,488.48	3.88	-2.25	3.17	
Last SDI MWD Survey										
15,944.00	91.31	89.220	5,823.90	53.23	10,544.35	10,544.46	0.00	0.00	0.00	
Projection to TD										



Company:	HighPoint Resources	Local Co-ordinate Reference:	Well Anschutz Equus Farms 5-61-35-4841B
Project:	Weld County, CO NAD 83	TVD Reference:	GL 4479.6' & KB 8' @ 4487.60ft (Cartel 7)
Site:	Anschutz Equus Farms Fed 5-61-34 NESE Pad	MD Reference:	GL 4479.6' & KB 8' @ 4487.60ft (Cartel 7)
Well:	Anschutz Equus Farms 5-61-35-4841B	North Reference:	True
Wellbore:	OH	Survey Calculation Method:	Minimum Curvature
Design:	OH	Database:	Casper District

Design Annotations				
Measured Depth (ft)	Vertical Depth (ft)	Local Coordinates		Comment
		+N/-S (ft)	+E/-W (ft)	
242.00	242.00	-0.43	0.68	First SDI MWD Survey
1,069.00	1,066.75	7.11	54.12	First SDI MWD Intermediate Survey
6,176.00	5,844.98	45.97	782.16	Last SDI MWD Curve Survey
6,270.00	5,846.21	48.87	876.11	First SDI MWD Lateral Survey
15,888.00	5,825.18	52.47	10,488.37	Last SDI MWD Survey
15,944.00	5,823.90	53.23	10,544.35	Projection to TD

Checked By: _____	Approved By: _____	Date: _____
-------------------	--------------------	-------------