



RADIAL CEMENT
BOND LOG

Company NOBLE		Company NOBLE					
Well KANGA STATE D 36-1JI		Well KANGA STATE D 36-1JI					
Field WATTENBERG		Field WATTENBERG					
County WELD		County WELD					
State COLORADO		State COLORADO					
Location: API # : 05-123-23692 NE NE LAT: 40.18078 LONG: -104.49258 760' FNL & 600FEL SEC 36 TWP 3N RGE 64W		Other Services					
Permanent Datum GL Log Measured From KB=10' Drilling Measured From KB		Elevation 4788'					
Elevation K.B. 4798' D.F. 4797' G.L. 4788'							
Date 7/2/2019							
Run Number 1							
Depth Driller 7454'							
Depth Logger 645'							
Bottom Logged Interval 645'							
Top Log Interval SURFACE							
Open Hole Size 12.25"							
Type Fluid H2O							
Density / Viscosity 8.3~							
Max. Recorded Temp. N/A							
Estimated Cement Top SEE LOG							
Time Well Ready ROA							
Time Logger on Bottom 0845							
Equipment Number W-054							
Location WINDSOR							
Recorded By MCDANIEL							
Witnessed By PETER STEWART							
Borehole Record		Tubing Record					
Run Number	Bit	From	To	Size	Weight	From	To
1	12.25"	KB	718'				
2	7.875"	KB	7443'				
Casing Record		Size		Wgt/Ft		Top	
Surface String		12.25"		24#		KB 718'	
Prot. String							
Production String		4.50"		11.6#		KB 7443'	
Liner							

<<< Fold Here >>>

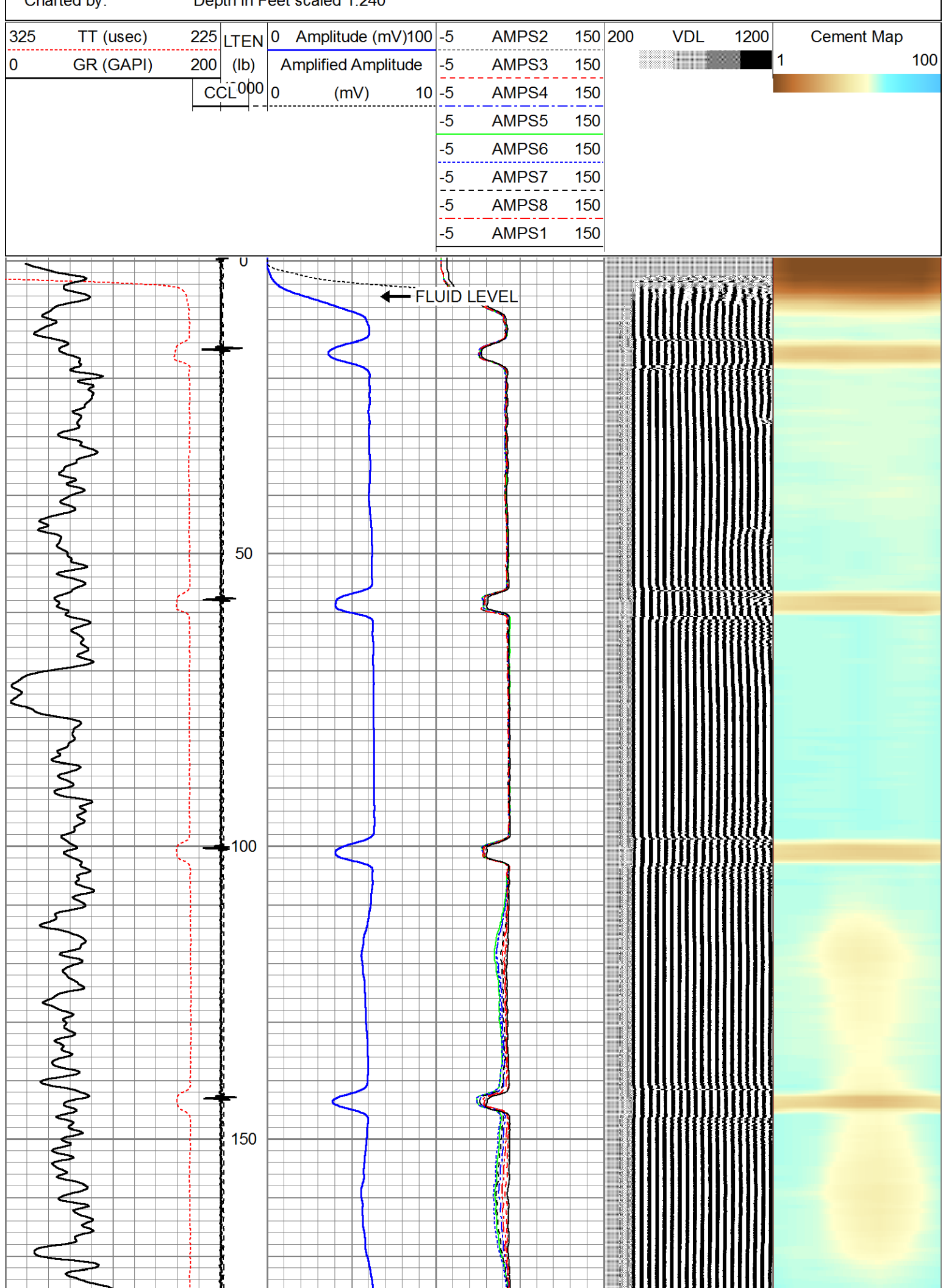
All interpretations are opinions based on inferences from electrical or other measurements and we cannot and do not guarantee the accuracy or correctness of any interpretation, and we shall not, except in the case of gross or willful negligence on our part, be liable or responsible for any loss, costs, damages, or expenses incurred or sustained by anyone resulting from any interpretation made by any of our officers, agents or employees. These interpretations are also subject to our general terms and conditions set out in our current Price Schedule.

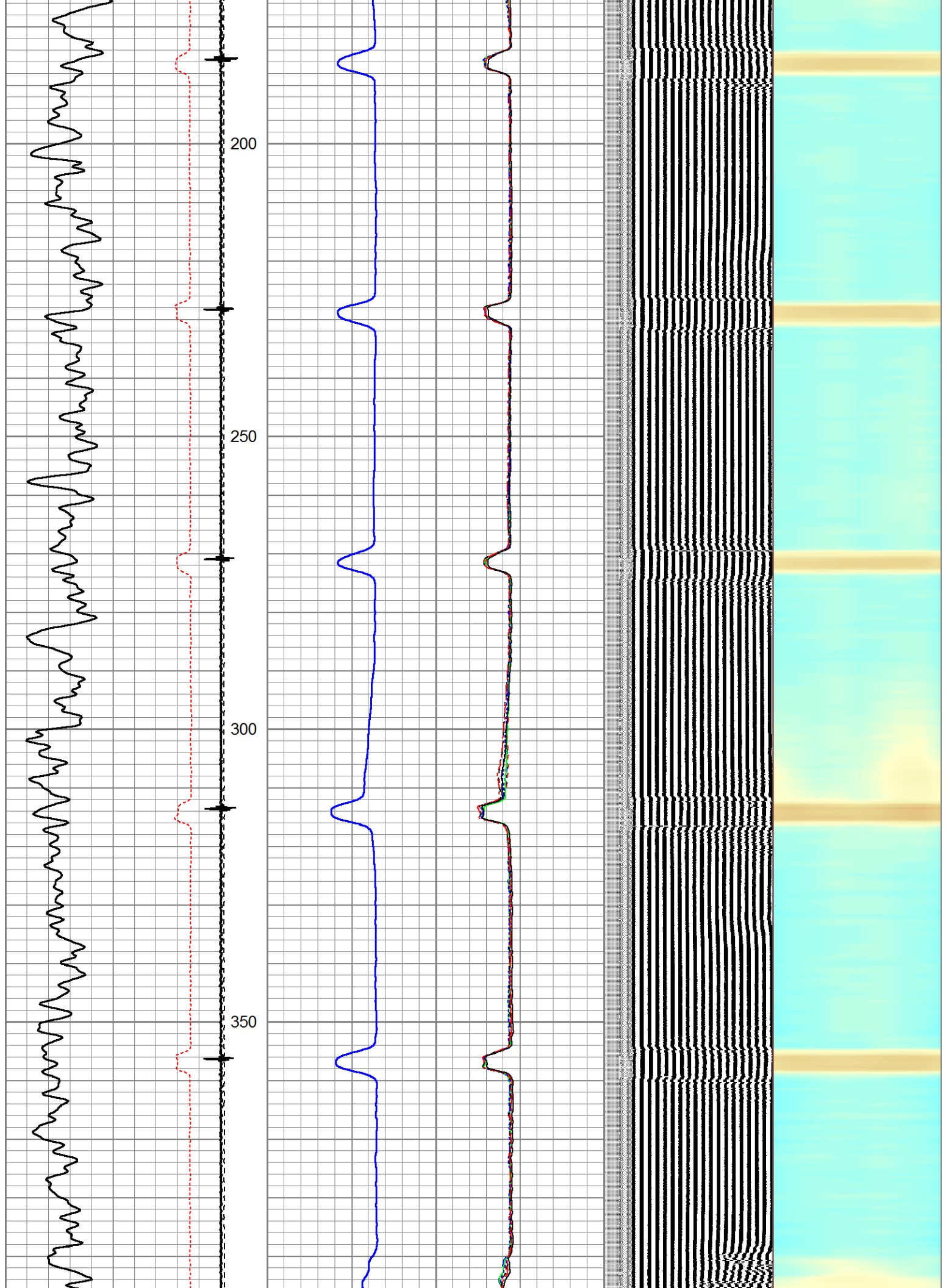
Comments

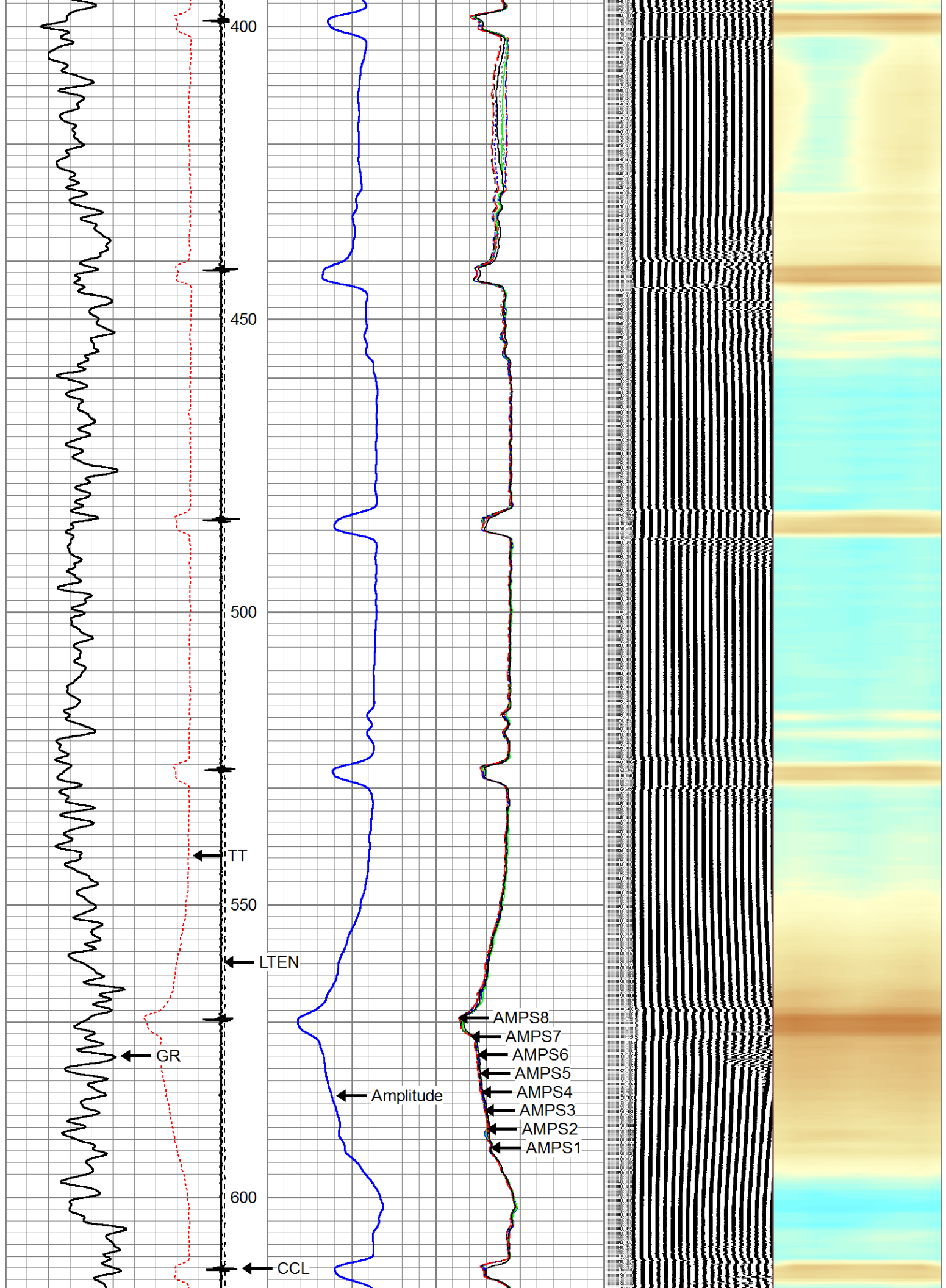
LOG NOT CORRELATED TO ANY OTHER LOG
LOG RAN W/ 0 PSI @ SURFACE
THANK YOU FOR CHOOSING CUTTERS WIRELINE SERVICE!!!

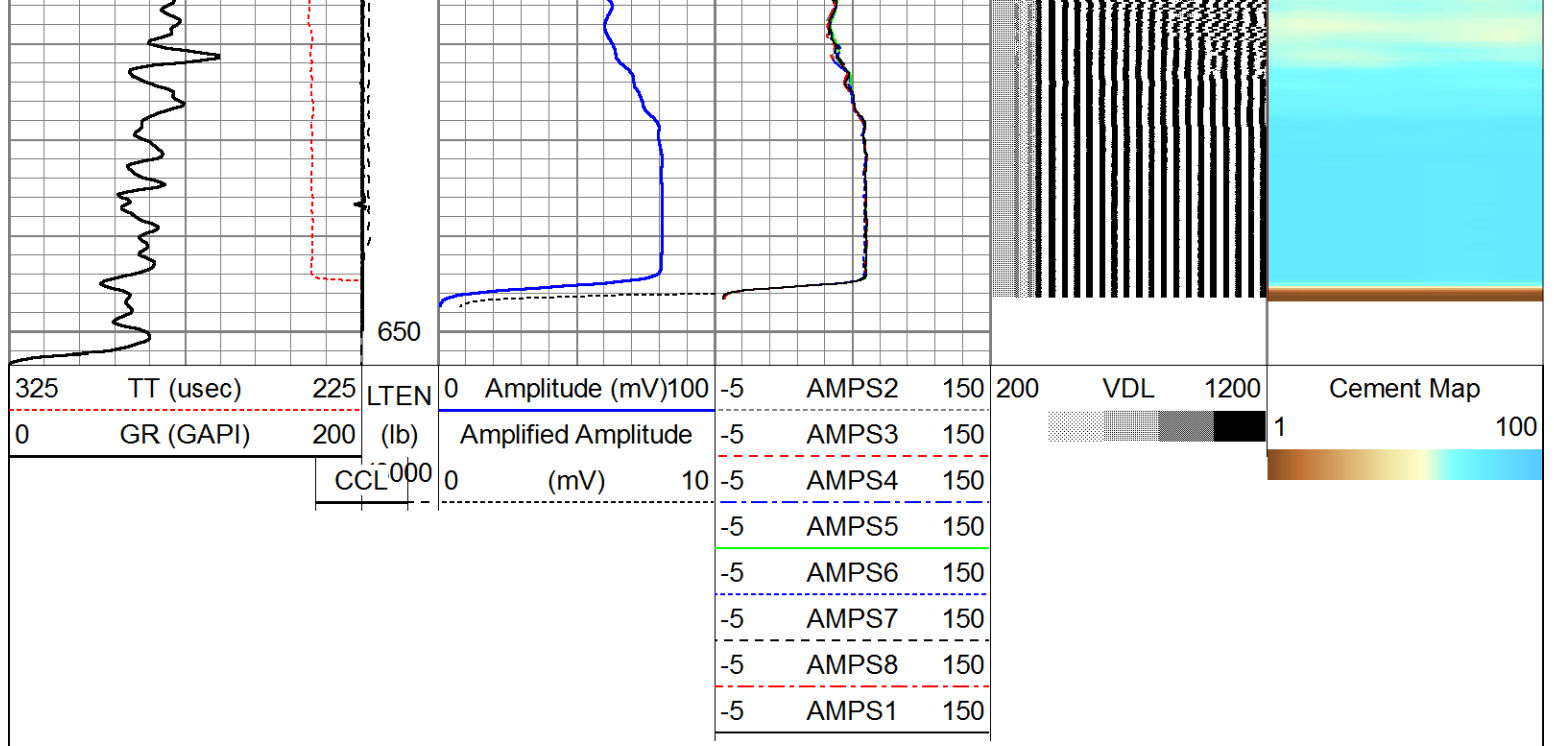
Sensor	Offset (ft)	Schematic	Description	Len (ft)	OD (in)	Wt (lb)

Tool Name	Length (ft)	Weight (lb)	Diameter (in)	Notes
WVFS8	8.19			
WVFS7	8.19			
WVFS6	8.19			
WVFS5	8.19			
WVFS4	8.19			
WVFS3	8.19			
WVFS2	8.19			
WVFS1	8.19			
WVFCAL	8.19			
WVF3FT	8.19			
CCL	3.50			
GR	1.00			
RBT-Probe (110217)	8.75	2.75	90.00	Probe 2.75" Radii Bond Tool
GR-Probe (060108)	4.00	2.75	30.00	Probe 2.75" 4 Channel Pulse
Dataset: kanga_state.db: field/well/run1/pass5.1 Total Length: 12.75 ft Total Weight: 120.00 lb O.D.: 2.75 in				









Company	NOBLE
Well	KANGA STATE D 36-1JI
Field	WATTENBERG
County	WELD
State	COLORADO