

HALLIBURTON

iCem[®] Service

HIGHPOINT RESOURCES CORP - EBUS

ANSCHUTZ EQUUS FARMS FED 5-61-34-5649B Production

Sincerely,
Meghan Jacobs

Legal Notice

Disclaimer:

All information in this report is provided subject to the terms and conditions which govern the services provided by Halliburton. Halliburton personnel use their best efforts in gathering information and their best judgment in interpreting it, but any interpretation, research, analysis or recommendation furnished by Halliburton are opinions based upon inferences from measurements and empirical relationships and assumptions, which inferences and empirical relationships and assumptions are not infallible, and with respect to which professionals in the industry may differ. iCem 3D Displacement results are used to understand how fluids intermix during a cement job. Simulation and 3D displacement results are not intended as and should not be used as a replacement for bond logs in determining top of cement. Current 3D model calculations are known to model more volume than the input volume for standard cases due to known calculation improvements required. For rotational cases, the modeled volume will be impacted by the same calculations impacting the standard cases, as well as additional constraints imposed to make the calculation time required operationally feasible. Therefore, until further notice, 3D displacement results should not be used for replacement of a bond log, or used as an identifier of top of cement. HALLIBURTON IS UNABLE TO GUARANTEE THE ACCURACY OF ANY CHART INTERPRETATION, RESEARCH ANALYSIS, OR JOB RECOMMENDATION and any interpretation or recommendation is not for use of or reliance upon by any third party. The customer has full responsibility for any of its decisions which are based on the information provided in this report.

Table of Contents

1.0 Cementing Job Summary 4

 1.1 Executive Summary4

2.0 Real-Time Job Summary 7

 2.1 Job Event Log7

3.0 Attachments..... 9

 3.1 ANSCHUTZ EQUUS FARMS FED 5-61-34-5649B PRODUCTION – Job Chart with Events9

 3.2 ANSCHUTZ EQUUS FARMS FED 5-61-34-5649B PRODUCTION – Job Chart with Events10

1.0 Cementing Job Summary

1.1 Executive Summary

Halliburton appreciates the opportunity to perform the cementing services on the **AEFF 5-61-34-5649B** cement **Production** casing job. A pre-job safety meeting was held before the job where details of the job were discussed, potential safety hazards were reviewed, and environmental compliance procedures were outlined.

Halliburton maintains a continuous quality improvement process and appreciates any comments or suggestions that you may have. Halliburton again thanks you for the opportunity to perform service work on this well. We hope to be your solutions provider for future projects.

Respectfully,

Halliburton Fort Lupton

The Road to Excellence Starts with Safety

Sold To #: 343492		Ship To #: 3912055		Quote #:		Sales Order #: 0905604166				
Customer: HIGHPOINT RESOURCES CORP-EBUS				Customer Rep: BOBBY						
Well Name: ANSCHUTZ EQUUS FARMS FED			Well #: 5-61-34-5649B		API/UWI #: 05-123-48183-00					
Field: WATTENBERG		City (SAP): ROGGEN		County/Parish: WELD		State: COLORADO				
Legal Description: NE SE-34-5N-61W-1685FSL-270FEL										
Contractor: CADE DRLG				Rig/Platform Name/Num: CADE 24						
Job BOM: 7523 7523										
Well Type: HORIZONTAL OIL										
Sales Person: HALAMERICA\H181357				Srv Supervisor: Lance Carpenter						
Job										
Formation Name										
Formation Depth (MD)		Top		Bottom						
Form Type				BHST						
Job depth MD		15964		Job Depth TVD		5927				
Water Depth				Wk Ht Above Floor		4				
Perforation Depth (MD)		From		To						
Well Data										
Description	New / Used	Size in	ID in	Weight lbm/ft	Thread	Grade	Top MD ft	Bottom MD ft	Top TVD ft	Bottom TVD ft
Casing		7	6.366	23			0	6294	0	6294
Casing		4.5	4	11.6	8 RD		0	15964	0	15964
Open Hole Section			6.125				6290	15967	0	15967
Tools and Accessories										
Type	Size in	Qty	Make	Depth ft		Type	Size in	Qty	Make	
Guide Shoe	4.5	1		15964		Top Plug	4.5	1		
Float Shoe	4.5					Bottom Plug	4.5			
Float Collar	4.5	1				SSR plug set	4.5			
Insert Float	4.5			15907		Plug Container	4.5			
Stage Tool	4.5					Centralizers	4.5			
Fluid Data										
Stage/Plug #: 1										

Fluid #	Stage Type	Fluid Name	Qty	Qty UoM	Mixing Density lbm/gal	Yield ft3/sack	Mix Fluid Gal	Rate bbl/min	Total Mix Fluid Gal
1	FDP-C1337-18	SBM FDP-C1337-18 CEMENT SPACER SYS	20	bbl	12	3.15	19.6		
2	NeoCem	NeoCem TM	185.3	bbl	13.2	2.04			9.74
3	Fresh Water		247	bbl	8.33				

Fluid #	Stage Type	Fluid Name	Qty	Qty UoM	Mixing Density lbm/gal	Yield ft3/sack	Mix Fluid Gal	Rate bbl/min	Total Mix Fluid Gal

Fluid #	Stage Type	Fluid Name	Qty	Qty UoM	Mixing Density lbm/gal	Yield ft3/sack	Mix Fluid Gal	Rate bbl/min	Total Mix Fluid Gal

Cement Left In Pipe	Amount	Reason	Shoe Joint
	55.89FT		

Mix Water:	7 PH	Mix Water Chloride:	100 ppm	Mix Water Temperature:	60°F
Cement Temperature:	## °F °C	Plug Displaced by:	## lb/gal kg/m3 XXXX	Disp. Temperature:	
Plug Bumped?	Yes	Bump Pressure:	865 psi	Floats Held?	Yes
Cement Returns:		Returns Density:		Returns Temperature:	

Comment

JOB WENT VERY WELL CEMENT VOLUMES WEIGHED AND SCALED THROUGHOUT JOB, DISPLACEMENT AT 7BPM SLOWED TO 3BPM AT 220BBLs AWAY BUMPED PLUG AT 247BBLs AWAY FINAL CIRCULATING PRESSURE 865PSI HELD PRESSURE AT 1500 PSI FOR 5 MIN AND OPENED WET SHOE SUB AT 3217PSI AND PUMPED 1 BBL WET SHOE. CHECKED FLOATS, FLOATS HELD .5 BBL BACK.

TOC 5229

TOS 4214

2.0 Real-Time Job Summary

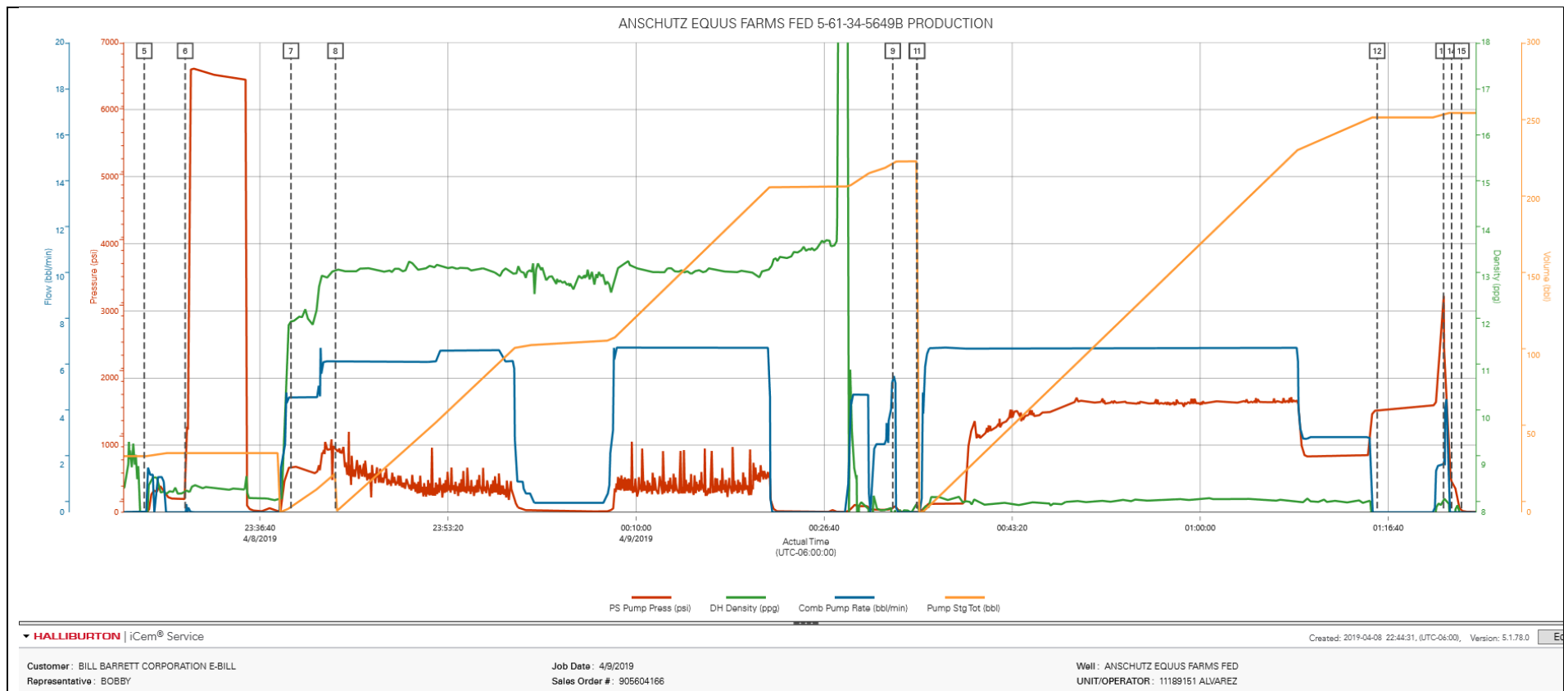
2.1 Job Event Log

Type	Seq. No.	Activity	Graph Label	Date	Time	Source	PS Pump Press (psi)	DH Density (ppg)	Comb Pump Rate (bbl/min)	Comments
Event	1	Call Out	Call Out	4/8/2019	16:30:00	USER				CREW CALLED OUT FOR JOB ON LOCATION AT 2000
Event	2	Arrive At Loc	Arrive At Loc	4/8/2019	21:15:00	USER				ARRIVED ON LOCATION RIG WAS ALREADY ON BOTTOM AT 2015 HRS CHECKED IN WITH COMPANY MAN AND WENT OVER JOB.
Event	3	Safety Meeting - Pre Rig-Up	Safety Meeting - Pre Rig-Up	4/8/2019	21:30:00	USER				HAD PRE RIG UP SAFETY MEETING WITH CREW AND DISCUSSED USING A SPOTTER WHILE BACKING UP TRUCKS AND TEAM LIFT AND HOW TO HAVE SAFE COMMUNICATION.
Event	4	Safety Meeting	Safety Meeting	4/8/2019	23:00:00	USER	-5.00	0.00	0.00	HAD SAFETY MEETING WITH RIG CREW AND DISCUSSED SLIPS TRIPS AND FALLS, S.W.A, RED ZONES, MUSTER AREAS, COMMUNICATION, HAZARDS AND POSSIBLE RATTLE SNAKE ENCOUNTERS. WENT OVER PUMP SCHEDULE.
Event	5	Start Job	Start Job	4/8/2019	23:26:24	COM6	-2.00	6.70	0.00	START JOB
Event	6	Test Lines	Test Lines	4/8/2019	23:30:02	COM6	197.00	8.51	0.00	TEST LINES TO 6500PSI
Event	7	Pump Spacer 1	Pump Spacer 1	4/8/2019	23:39:25	COM6	674.00	12.05	4.90	PUMP 20 BBLS OF (FDP) SPACER 12 PPG 3.15 YIELD 19.6 GAL
Event	8	Pump Cement	Pump Cement	4/8/2019	23:43:21	COM6	935.00	13.16	6.40	PUMP 510 SKS 185 BBL LEAD CEMENT (NEOCER) 13.2 PPG 2.04 YIELD 9.74 GAL
Event	9	Clean Lines	Clean Lines	4/9/2019	00:32:45	COM6	70.00	7.58	5.80	RIG BLEW DOWN LINES FROM RIG FLOOR AND WASHED PUMPS AND LINES TO WASH UP TANK.
Event	10	Drop Plug	Drop Top Plug	4/9/2019	00:34:52	COM6	1.00	8.19	0.00	DROPPED PLUG WITH COMPANY MAN AND WEATHERFORD TOOL HAND ON RIG FLOOR.
Event	11	Pump Displacement	Pump Displacement	4/9/2019	00:34:55	COM6	2.00	8.11	0.00	PUMPED 247 BBLS OF DISPLACEMENT WITH MMCR IN FIRST 5 BBLS THEN OXYGEN, ANHIB 2 AND B2-3 THROUGHOUT.

Event	12	Bump Plug	Bump Plug	4/9/2019	01:15:41	COM6	1513.00	7.50	0.00	BUMPED PLUG AT 247BBLs AWAY FINAL CIRCULATING PRESSURE 865 PSI AT 3BPM HELD PRESSURE AT 1500 PSI FOR 5 MIN.
Event	13	Other	Other	4/9/2019	01:21:34	USER	3192.00	8.27	2.00	OPENED UP WET SHOE SUB AT 3217 PSI AND PUMPED 1 BBL WET SHOE.
Event	14	Check Floats	Check Floats	4/9/2019	01:22:17	USER	454.00	7.79	0.00	CHECK FLOATS, FLOATS HELD .5 BBL BACK.
Event	15	End Job	End Job	4/9/2019	01:23:09	USER	25.00	7.84	0.00	END JOB.
Event	16	Post-Job Safety Meeting (Pre Rig-Down)	Post-Job Safety Meeting (Pre Rig-Down)	4/9/2019	01:30:00	USER				HAD PRE RIG DOWN SAFETY MEETING WITH CREW AND DISCUSSED TEAM LIFT AND TO WATCH FOOT PLACEMENT AND PINCH POINTS. CREW RIGGED DOWN IRON.
Event	17	Drop Plug	Crew Leave Location	4/9/2019	03:00:00	USER				CREW LEFT LOCATION, CALLED IN JOURNEY MANGEMENT. DISCUSSED SAFE ROUTE.

3.0 Attachments

3.1 ANSCHUTZ EQUUS FARMS FED 5-61-34-5649B PRODUCTION – Job Chart with Events



3.2 ANSCHUTZ EQUUS FARMS FED 5-61-34-5649B PRODUCTION – Job Chart with Events

