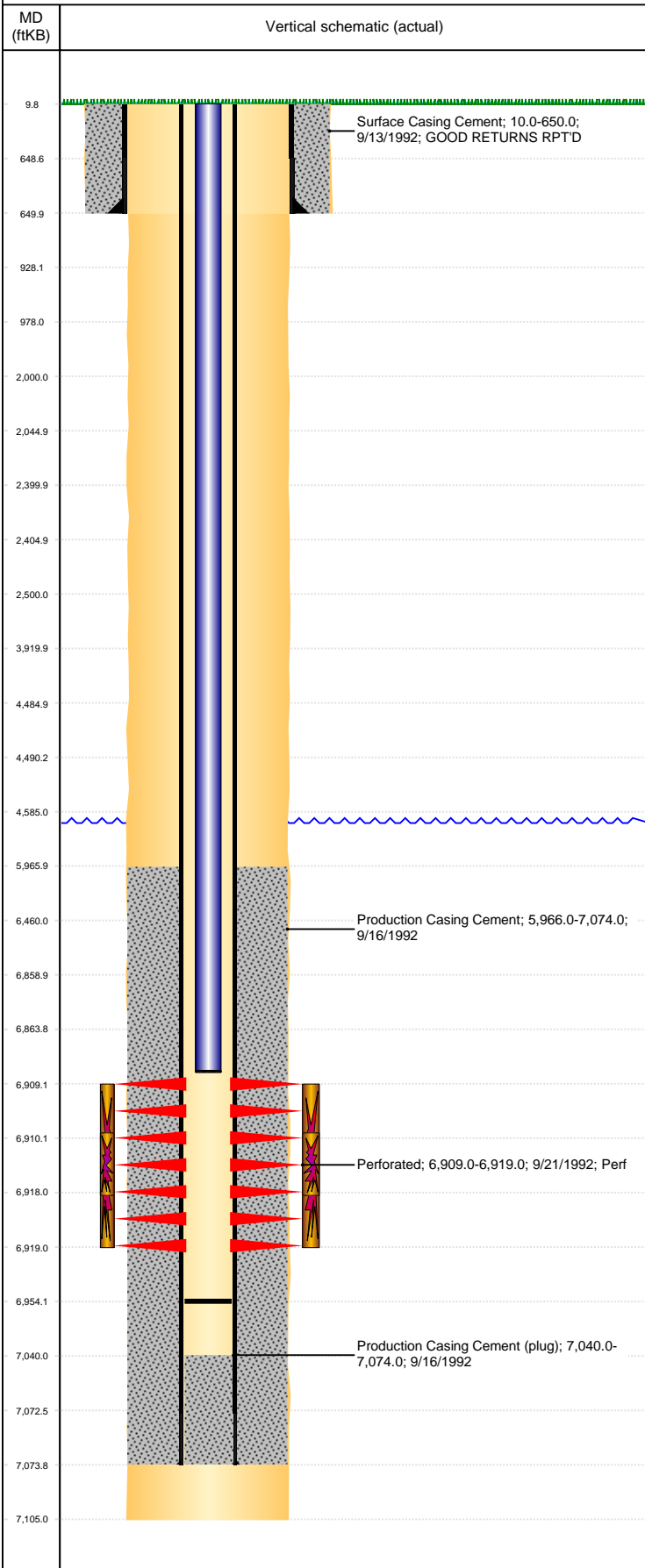


Well Name: SPIKE STATE D36-05

VERTICAL, ORIGINAL HOLE, 7/1/2019 4:09:26 PM



Well Header									
API 05-123-16130		Business Unit DJ BASIN		District 15		Well Config VERTICAL			
KB - GL / MSL (ft... 10.00		Spud Date 9/12/1992		P & A Date		Well Production Status SI			SoRT No
Comment DISCREPANCY: TD DRL/ST RPTS 7090', LOGS 7105'. USED LOGS. 1ST SALES DRL RPT 10/23/92, ST RPT 10/23/93. USED DRL RPT. PROD CSG DEPTH, ST RPT 7070', DRL RPT 7070', CSG TALLY 7074', USED CSG TALLY									
Surface Location (Congressional)									
Qtr 3 SW	Qtr 4 NW	Section 36	Twonshp 3	Twonsh... N	Range 64	Rng E/... W	Actual Latitude (°) 40.18369041	Actual Longitude (°) -104.50693276	
Wellbore Sections									
Section Des			Size (in)			Act Top, MD (ftKB)		Act Btm, MD (ftKB)	
SURFACE			12 1/4			10		650	
PRODUCTION			7 7/8			650		7,105	
Casing Strings									
Csg Des		Run Date		OD (in)	Wt/Len (lb/ft)	Grade	Top, MD (ftKB)	MD (ftKB)	
Surface		9/13/1992		8 5/8	24.00		10.0	650.0	
Production		9/16/1992		2 7/8	6.50	N-80	10.0	7,074.0	
Cement									
Des				Start Date		Top (ftKB)		Btm (ftKB)	
Surface Casing Cement				9/13/1992		10.0		650.0	
Production Casing Cement				9/16/1992		5,966.0		7,074.0	
Zone Statuses									
Zone Name		Status Date	Status	Fluid Type	Job			Prod Method	
CODELL		4/1/2010	PR	Water				Flowing	
CODELL		5/9/2017	SI						
Perforation Data									
Linked Zone			Bnch/Stg	Entered Shot Total	Top (ftKB)	Btm (ftKB)	Date		
CODELL, ORIGINAL HOLE				40	6,909.00	6,919.00	9/21/1992		
Stimulation Intervals									
Zone				Start Date		Top (ftKB)		Btm (ftKB)	
CODELL, ORIGINAL HOLE				9/30/1992		6,909.0		6,919.0	
CODELL, ORIGINAL HOLE				6/8/2006		6,910.0		6,918.0	
Other In Hole									
Run Date		Des				OD (in)	Top (ftKB)	Btm (ftKB)	
2/26/2015		Plunger Lift				1.265			
Logs									
Date		Type				Top, MD (ftKB)		Btm, MD (ftKB)	
9/16/1992		COMPENSATED DENSITY				6,150.0		7,100.0	
9/16/1992		INDUCTION				6,150.0		7,100.0	
9/21/1992		CEMENT BOND				5,880.0		6,968.0	
12/6/2017		GYRO				12.0		6,800.0	
Plug Back Total Depths									
Date		Type		Com				Depth (ftKB)	
5/22/2006		FILL		CLEAN OUT				6,978.0	
6/12/2006		FILL		TAGGED FILL				6,954.0	