

WALBRIDGE UNIT 3X
Current Wellbore

11/08/18

Rangely Weber Sand Unit

Well Details:		WALBRIDGE UNIT 3X	
STATE & CO		CO - Rio Blanco	
State Location		NENW Section 1,T1N,R102W, 6TH P.M.	
NAD83 location:		LAT: 40.0903239 LONG: 108.7927582	
API #		05-103-09206	
CHEVNO		FP7346	

Casing Details:		Depth	
Type		KB	
KB		5233	
GL		5213.51'	
16 in. UNKNOWN #/ft, UNKNOWN		0 - 53,' UNKNOWN sxs cmt	
9.625 in. 36 #/ft, K-55		0 - 3040,' 650 sxs cmt	
7 in. 23 #/ft, K-55		0 - 5295,' sxs cmt	
7 in. 26 #/ft, K-55		5295 - 5768,' sxs cmt	
7 in. 26 #/ft, K-55		5768 - 6551,' 890 sxs cmt	
Perfs, Top		6004	
Perfs, Btm		6400	
PBSD		6454	
TD		6552	

Formation	Depth
Niobrara	
Frontier	0
Frontier Snd	
Mowry	
Dakota	0
Morrison	0
Curtis	0
Entrada	0
Carmel	0
Navajo	0
Chinle	0
Shinarump	0
Moenkopi	0
Weber	5983

GOC_CALC	5563	FT	PAY
Weber 1a	5983	176	37
Weber 2	6159		
Weber 3a	6167	94	55
Weber 4	6261		
Weber 5a	6299	106	27
Weber 6	6405		
Weber 7a	6419	84	0
Weber 8	6503		
Weber 9a	0	0	0
Weber 10	0	0	0
Weber 11a	0	0	0
		460	119
OWC_CALC	6333		

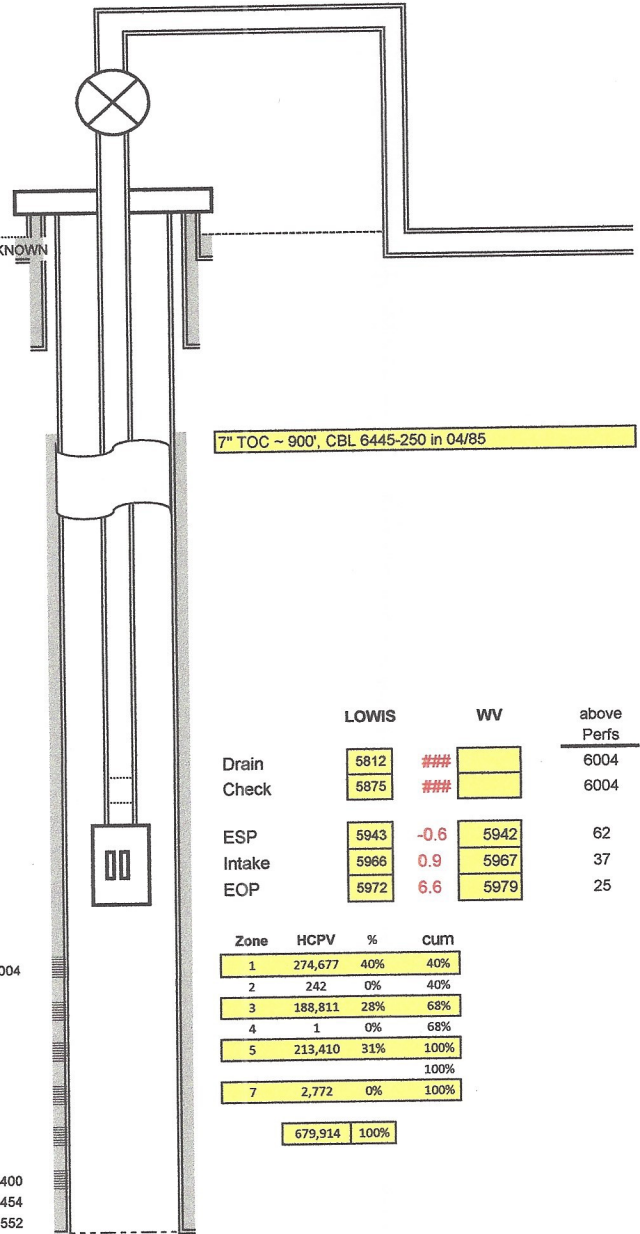
KB 5233
 GL 5213.51'
 16 in. UNKNOWN #/ft, UNKNOWN
 0 - 53,' UNKNOWN sxs cmt
 9.625 in. 36 #/ft, K-55
 0 - 3040,' 650 sxs cmt
 7 in. 23 #/ft, K-55
 0 - 5295,' sxs cmt

7 in. 26 #/ft, K-55
 5295 - 5768,' sxs cmt

7 in. 26 #/ft, K-55
 5768 - 6551,' 890 sxs cmt

Perfs, Top 6004

Perfs, Btm 6400
 PBSD 6454
 TD 6552



7" TOC ~ 900', CBL 6445-250 in 04/85

	LOWIS	WV	above Perfs
Drain	5812	###	6004
Check	5875	###	6004

ESP	5943	-0.6	5942	62
Intake	5966	0.9	5967	37
EOP	5972	6.6	5979	25

Zone	HCPV	%	CUM
1	274,677	40%	40%
2	242	0%	40%
3	188,811	28%	68%
4	1	0%	68%
5	213,410	31%	100%
7	2,772	0%	100%
	679,914	100%	

Notes:

- 1-
- 2-
- 3-