

LEGEND:

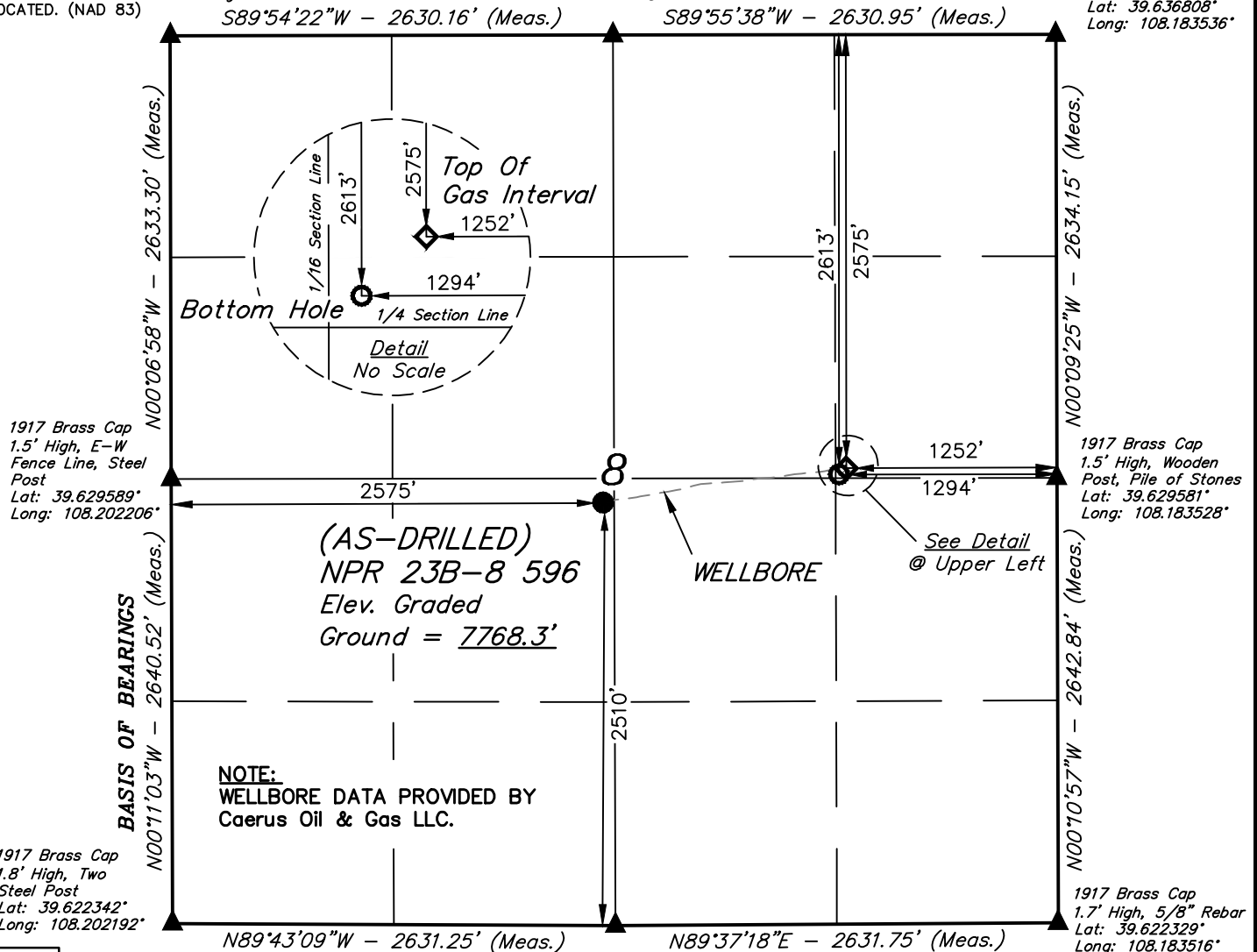
- = SURFACE LOCATION.
- ◆ = TOP OF GAS INTERVAL.
- = BOTTOM HOLE.
- ▲ = SECTION CORNERS LOCATED. (NAD 83)

T5S, R96W, 6th P.M.

1917 Brass Cap
1.5' High, Steel
Post, N-S Fence
Lat: 39.636814°
Long: 108.202208°

1917 Brass Cap
1.0' High
Lat: 39.636814°
Long: 108.192872°

1917 Brass Cap
2.5' High
Lat: 39.636808°
Long: 108.183536°



NOTE:
WELLBORE DATA PROVIDED BY
Caerus Oil & Gas LLC.

PDOP = 1.4

NAD 83 (SURFACE LOCATION)	
LATITUDE = 39°37'45.06" (39.629184)	
LONGITUDE = 108°11'35.03" (108.193064)	
NAD 27 (SURFACE LOCATION)	
LATITUDE = 39°37'45.15" (39.629208)	
LONGITUDE = 108°11'32.73" (108.192426)	
UTM NAD 27 (ZONE 12)	
N: 14403390.60 E: 2430996.81	

NOTE:

- Distances referenced on plat to section lines are perpendicular.



NAD 83 (TOP OF GAS INTERVAL)	NAD 83 (BOTTOM HOLE)
LATITUDE = 39°37'47.09" (39.629746)	LATITUDE = 39°37'46.70" (39.629640)
LONGITUDE = 108°11'16.69" (108.187969)	LONGITUDE = 108°11'17.23" (108.188119)
NAD 27 (TOP OF GAS INTERVAL)	NAD 27 (BOTTOM HOLE)
LATITUDE = 39°37'47.17" (39.629770)	LATITUDE = 39°37'46.79" (39.629664)
LONGITUDE = 108°11'14.39" (108.187331)	LONGITUDE = 108°11'14.93" (108.187482)
UTM NAD 27 (ZONE 12)	UTM NAD 27 (ZONE 12)
N: 14403640.18 E: 2432425.24	N: 14403600.31 E: 2432384.18

1975 Brass Cap
1.0' High, Fence
Corner, Steel Post
Lat: 39.622294°
Long: 108.192853°

CERTIFICATE

THIS IS TO CERTIFY THAT THE ABOVE PLAT WAS PREPARED AND LOCATION AS SHOWN WAS STAKED ON THE GROUND FROM FIELD NOTES OF ACTUAL SURVEYS MADE BY ME OR UNDER MY SUPERVISION AND THAT THE SAME ARE TRUE AND CORRECT TO THE BEST OF MY KNOWLEDGE AND BELIEF.

REGISTERED LAND SURVEYOR
REGISTRATION NO. 38130
STATE OF COLORADO 06/17-19

BASIS OF BEARINGS

BEARINGS ARE BASED ASSUMPTION THAT THE WEST LINE OF THE SOUTHWEST 1/4 OF SECTION 8 BEARS N00°11'03"W. MONUMENTS DESCRIBED HEREON.

BASIS OF ELEVATION

BENCH MARK (H79) LOCATED IN THE NE 1/4 OF SECTION 35, T4S, R98W, 6th P.M., TAKEN FROM THE BULL FORK, QUADRANGLE, COLORADO, 7.5 MINUTE QUAD. (TOPOGRAPHIC MAP) PUBLISHED BY THE UNITED STATES DEPARTMENT OF THE INTERIOR, GEOLOGICAL SURVEY. SAID ELEVATION IS MARKED AS BEING 8535 FEET.



UELS, LLC
Corporate Office * 85 South 200 East
Vernal, UT 84078 * (435) 789-1017

**Caerus Oil & Gas LLC**

(AS-DRILLED) NPR 23B-8 596
NE 1/4 SW 1/4, SECTION 8, T5S, R96W, 6th P.M.
GARFIELD COUNTY, COLORADO

SURVEYED BY	BART HUNTING, L.W.	05-20-19	SCALE
DRAWN BY	T.L.L.	05-21-19	1" = 1000'

AS-DRILLED WELL LOCATION PLAT