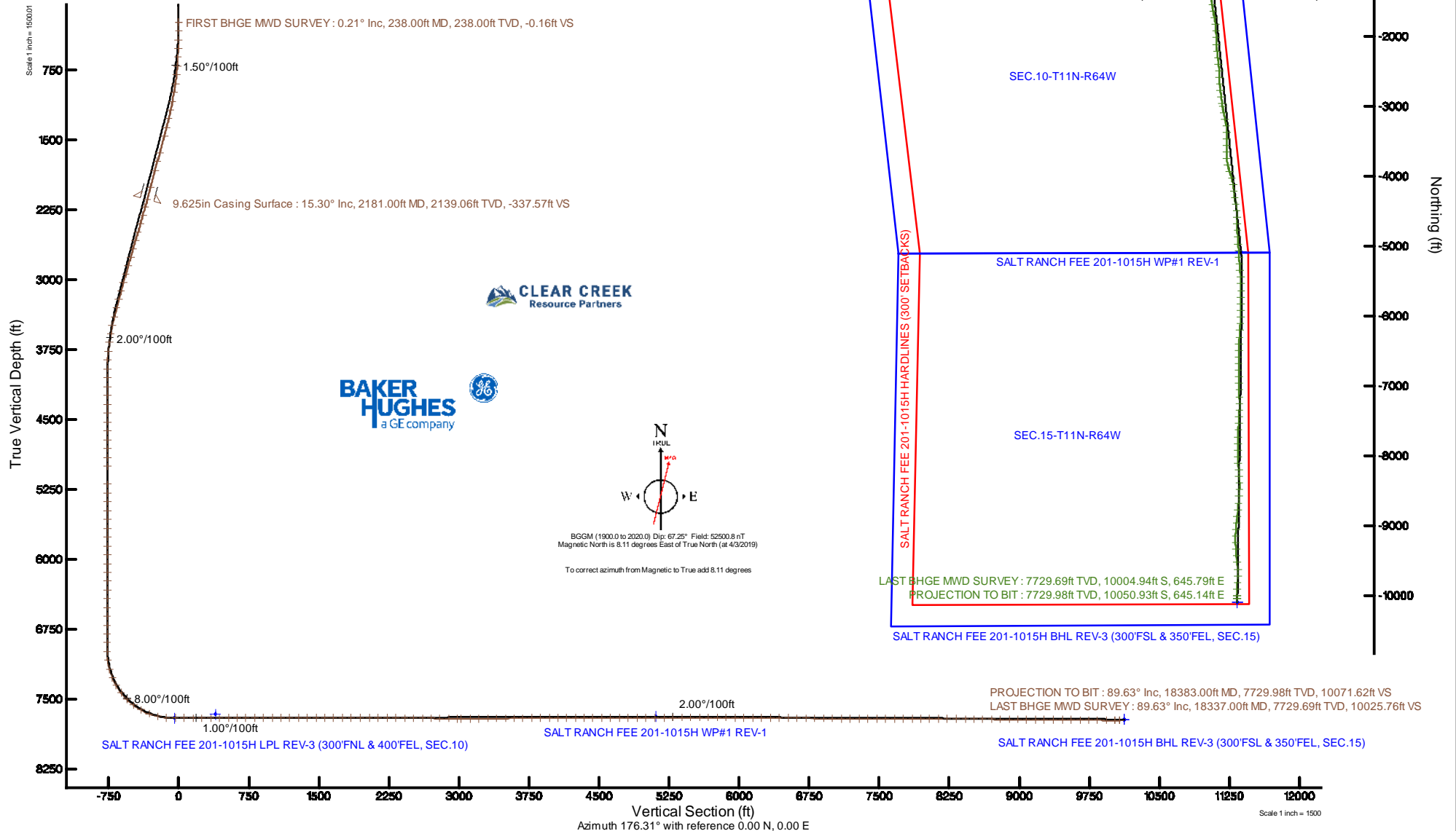


CCRP OPERATING INC.

Location: COLORADO Slot: SLOT#01 SALT RANCH FEE 201-1015H (358°FNL & 578°FEL, SEC.10)
Field: WELD COUNTY (NAD 83/TN) Well: SALT RANCH FEE 201-1015H
Facility: SEC.10-T11N-R64W Wellbore: SALT RANCH FEE 201-1015H PWB

Plot reference wellpath is SALT RANCH FEE 201-1015H (REV-C.O) PWP	Grid System: NAD83 / Lambert Colorado SP, Northern Zone (501), US feet
True vertical depths are referenced to UNIT 406 (22KB) (RKB)	* = Wellpath was transformed from a different geodetic datum
Measured depths are referenced to UNIT 406 (22KB) (RKB)	North Reference: True north
UNIT 406 (22KB) (RKB) to Mean Sea Level: 5456 feet	Scale: True distance
Mean Sea Level to Mud line (At Slot: SLOT#01 SALT RANCH FEE 201-1015H (358°FNL & 578°FEL, SEC.10)): 0 feet	Depths are in feet
Coordinates are in feet referenced to Slot	Created by: adamkat on 2019-05-08
	Database: Denver



Actual Wellpath Report

SALT RANCH FEE 201-1015H AWP

Page 1 of 8

REFERENCE WELLPATH IDENTIFICATION			
Operator	CCRP OPERATING INC.	Slot	SLOT#01 SALT RANCH FEE 201-1015H (358'FNL & 578'FEL, SEC.10)
Area	COLORADO	Well	SALT RANCH FEE 201-1015H
Field	WELD COUNTY (NAD 83/TN)	Wellbore	SALT RANCH FEE 201-1015H AWB
Facility	SEC.10-T11N-R64W		

REPORT SETUP INFORMATION			
Projection System	NAD83 / Lambert Colorado SP, Northern Zone (501), US feet	Software System	WellArchitect® 5.0
North Reference	True	User	Adamkat
Scale	1.000030	Report Generated	5/8/2019 at 1:26:31 PM
Convergence at slot	0.63° East	Database/Source file	Denver/SALT_RANCH_FEE_201-1015H_AWP.xml

WELLPATH LOCATION						
	Local coordinates		Grid coordinates		Geographic coordinates	
	North[ft]	East[ft]	Easting[US ft]	Northing[US ft]	Latitude	Longitude
Slot Location	-0.40	29.85	3269179.94	1587572.01	40°56'31.884"N	104°31'32.480"W
Facility Reference Pt			3269150.08	1587572.09	40°56'31.888"N	104°31'32.869"W
Field Reference Pt			3242001.26	1607883.12	40°59'55.356"N	104°37'23.988"W

WELLPATH DATUM			
Calculation method	Minimum curvature	UNIT 406 (22'KB) (RKB) to Facility Vertical Datum	5456.00ft
Horizontal Reference Pt	Slot	UNIT 406 (22'KB) (RKB) to Mean Sea Level	5456.00ft
Vertical Reference Pt	UNIT 406 (22'KB) (RKB)	UNIT 406 (22'KB) (RKB) to Mud Line at Slot (SLOT#01 SALT RANCH FEE 201-1015H (358'FNL & 578'FEL, SEC.10))	5456.00ft
MD Reference Pt	UNIT 406 (22'KB) (RKB)	Section Origin	N 0.00, E 0.00 ft
Field Vertical Reference	Mean Sea Level	Section Azimuth	176.31°

Actual Wellpath Report

SALT RANCH FEE 201-1015H AWP
Page 2 of 8

REFERENCE WELLPATH IDENTIFICATION

Operator	CCRP OPERATING INC.	Slot	SLOT#01 SALT RANCH FEE 201-1015H (358'FNL & 578'FEL, SEC.10)
Area	COLORADO	Well	SALT RANCH FEE 201-1015H
Field	WELD COUNTY (NAD 83/TN)	Wellbore	SALT RANCH FEE 201-1015H AWB
Facility	SEC.10-T11N-R64W		

WELLPATH DATA (191 stations) † = interpolated/extrapolated station

MD [ft]	Inclination [°]	Azimuth [°]	TVD [ft]	Vert Sect [ft]	North [ft]	East [ft]	Grid East [US ft]	Grid North [US ft]	Latitude	Longitude	DLS [°/100ft]	Comments
0.00†	0.000	289.910	0.00	0.00	0.00	0.00	3269179.93	1587572.01	40°56'31.884"N	104°31'32.480"W	0.00	
22.00	0.000	289.910	22.00	0.00	0.00	0.00	3269179.93	1587572.01	40°56'31.884"N	104°31'32.480"W	0.00	
238.00	0.210	289.910	238.00	-0.16	0.13	-0.37	3269179.56	1587572.14	40°56'31.885"N	104°31'32.485"W	0.10	FIRST BHGE MWD SURVEY
330.00	0.660	64.470	330.00	-0.42	0.42	-0.05	3269179.88	1587572.43	40°56'31.888"N	104°31'32.481"W	0.89	
426.00	2.240	356.750	425.97	-2.51	2.53	0.34	3269180.25	1587574.55	40°56'31.909"N	104°31'32.476"W	2.17	
521.00	3.120	17.510	520.87	-6.77	6.85	1.01	3269180.87	1587578.88	40°56'31.952"N	104°31'32.467"W	1.36	
614.00	2.550	27.260	613.75	-10.91	11.10	2.72	3269182.53	1587583.15	40°56'31.994"N	104°31'32.445"W	0.80	
710.00	4.670	24.390	709.56	-16.19	16.56	5.31	3269185.07	1587588.63	40°56'32.048"N	104°31'32.411"W	2.22	
805.00	6.580	19.930	804.09	-24.59	25.20	8.77	3269188.42	1587597.31	40°56'32.133"N	104°31'32.366"W	2.06	
901.00	8.290	10.380	899.29	-36.34	37.18	11.89	3269191.41	1587609.32	40°56'32.251"N	104°31'32.325"W	2.19	
997.00	10.100	8.270	994.05	-51.29	52.32	14.35	3269193.71	1587624.49	40°56'32.401"N	104°31'32.293"W	1.92	
1092.00	11.280	9.160	1087.40	-68.50	69.74	17.02	3269196.19	1587641.94	40°56'32.573"N	104°31'32.258"W	1.25	
1188.00	12.370	15.050	1181.37	-87.39	88.94	21.19	3269200.15	1587661.18	40°56'32.763"N	104°31'32.204"W	1.69	
1284.00	14.280	18.570	1274.78	-108.09	110.09	27.63	3269206.35	1587682.41	40°56'32.972"N	104°31'32.120"W	2.16	
1379.00	16.280	15.990	1366.42	-131.47	134.00	35.03	3269213.49	1587706.40	40°56'33.208"N	104°31'32.024"W	2.22	
1475.00	15.760	16.350	1458.69	-156.39	159.45	42.41	3269220.59	1587731.92	40°56'33.459"N	104°31'31.927"W	0.55	
1665.00	14.950	12.280	1641.91	-204.19	208.16	54.88	3269232.53	1587780.77	40°56'33.941"N	104°31'31.765"W	0.71	
1760.00	16.710	12.150	1733.30	-229.11	233.48	60.37	3269237.73	1587806.15	40°56'34.191"N	104°31'31.693"W	1.85	
1856.00	15.340	12.640	1825.57	-254.58	259.37	66.05	3269243.13	1587832.10	40°56'34.447"N	104°31'31.619"W	1.43	
2047.00	15.270	10.020	2009.80	-303.26	308.79	75.95	3269252.49	1587881.63	40°56'34.935"N	104°31'31.490"W	0.36	
2264.00	15.320	10.040	2219.11	-358.86	365.16	85.92	3269261.84	1587938.10	40°56'35.492"N	104°31'31.360"W	0.02	
2359.00	15.500	9.770	2310.70	-383.40	390.02	90.27	3269265.91	1587963.02	40°56'35.738"N	104°31'31.304"W	0.20	
2454.00	16.850	11.040	2401.93	-409.06	416.05	95.06	3269270.42	1587989.09	40°56'35.995"N	104°31'31.241"W	1.47	
2549.00	17.650	3.760	2492.67	-436.66	443.94	98.64	3269273.69	1588017.02	40°56'36.270"N	104°31'31.195"W	2.42	
2644.00	16.950	348.900	2583.42	-464.69	471.91	96.92	3269271.66	1588044.97	40°56'36.547"N	104°31'31.217"W	4.70	
2738.00	15.430	347.460	2673.69	-490.64	497.57	91.56	3269266.03	1588070.57	40°56'36.800"N	104°31'31.287"W	1.67	
2832.00	15.950	1.770	2764.22	-515.86	522.69	89.24	3269263.43	1588095.67	40°56'37.049"N	104°31'31.317"W	4.14	
2926.00	16.510	7.470	2854.48	-541.82	548.85	91.38	3269265.28	1588121.84	40°56'37.307"N	104°31'31.289"W	1.80	
3020.00	16.430	11.750	2944.62	-567.74	575.11	95.82	3269269.44	1588148.15	40°56'37.566"N	104°31'31.231"W	1.29	
3115.00	16.360	15.820	3035.77	-593.30	601.13	102.21	3269275.53	1588174.25	40°56'37.824"N	104°31'31.148"W	1.21	
3209.00	16.370	20.270	3125.96	-617.88	626.30	110.41	3269283.46	1588199.50	40°56'38.072"N	104°31'31.041"W	1.33	
3303.00	16.490	21.430	3216.12	-642.07	651.14	119.87	3269292.65	1588224.45	40°56'38.318"N	104°31'30.918"W	0.37	
3397.00	16.110	14.840	3306.35	-666.51	676.17	128.08	3269300.59	1588249.57	40°56'38.565"N	104°31'30.811"W	2.01	
3492.00	13.920	2.040	3398.13	-690.39	700.34	131.87	3269304.10	1588273.78	40°56'38.804"N	104°31'30.762"W	4.17	
3586.00	11.220	348.920	3489.88	-710.72	720.62	130.51	3269302.53	1588294.04	40°56'39.004"N	104°31'30.779"W	4.16	
3680.00	9.790	354.070	3582.31	-727.77	737.55	127.93	3269299.76	1588310.94	40°56'39.171"N	104°31'30.813"W	1.82	
3774.00	7.670	355.060	3675.21	-742.03	751.75	126.56	3269298.23	1588325.12	40°56'39.312"N	104°31'30.831"W	2.26	
3869.00	5.520	352.650	3769.58	-752.93	762.60	125.43	3269296.98	1588335.96	40°56'39.419"N	104°31'30.845"W	2.28	
3963.00	3.770	351.030	3863.27	-760.52	770.13	124.37	3269295.84	1588343.49	40°56'39.493"N	104°31'30.859"W	1.87	
4058.00	1.810	321.380	3958.16	-764.86	774.39	122.95	3269294.37	1588347.73	40°56'39.536"N	104°31'30.878"W	2.50	
4153.00	0.360	140.570	4053.14	-765.85	775.33	122.20	3269293.61	1588348.66	40°56'39.545"N	104°31'30.888"W	2.28	
4249.00	0.060	325.320	4149.14	-765.65	775.14	122.37	3269293.78	1588348.47	40°56'39.543"N	104°31'30.885"W	0.44	
4343.00	0.030	53.460	4243.14	-765.70	775.20	122.36	3269293.77	1588348.53	40°56'39.543"N	104°31'30.886"W	0.07	
4439.00	0.190	48.280	4339.14	-765.82	775.32	122.50	3269293.91	1588348.65	40°56'39.545"N	104°31'30.884"W	0.17	
4534.00	0.130	103.210	4434.14	-765.88	775.40	122.72	3269294.13	1588348.73	40°56'39.545"N	104°31'30.881"W	0.17	

Actual Wellpath Report

SALT RANCH FEE 201-1015H AWP
Page 3 of 8

REFERENCE WELLPATH IDENTIFICATION

Operator	CCRP OPERATING INC.	Slot	SLOT#01 SALT RANCH FEE 201-1015H (358'FNL & 578'FEL, SEC.10)
Area	COLORADO	Well	SALT RANCH FEE 201-1015H
Field	WELD COUNTY (NAD 83/TN)	Wellbore	SALT RANCH FEE 201-1015H AWB
Facility	SEC.10-T11N-R64W		

WELLPATH DATA (191 stations)

MD [ft]	Inclination [°]	Azimuth [°]	TVD [ft]	Vert Sect [ft]	North [ft]	East [ft]	Grid East [US ft]	Grid North [US ft]	Latitude	Longitude	DLS [°/100ft]	Comments
4629.00	0.100	325.870	4529.14	-765.92	775.44	122.78	3269294.19	1588348.78	40°56'39.546"N	104°31'30.880"W	0.23	
4725.00	0.110	163.390	4625.14	-765.90	775.42	122.76	3269294.17	1588348.76	40°56'39.546"N	104°31'30.880"W	0.22	
4820.00	0.300	41.380	4720.14	-765.99	775.52	122.95	3269294.36	1588348.86	40°56'39.547"N	104°31'30.878"W	0.39	
4915.00	0.070	224.040	4815.14	-766.13	775.67	123.07	3269294.48	1588349.01	40°56'39.548"N	104°31'30.876"W	0.39	
5011.00	0.070	66.760	4911.14	-766.11	775.65	123.08	3269294.49	1588348.99	40°56'39.548"N	104°31'30.876"W	0.14	
5106.00	0.090	175.330	5006.14	-766.05	775.60	123.14	3269294.55	1588348.94	40°56'39.547"N	104°31'30.875"W	0.14	
5296.00	0.140	71.320	5196.14	-765.96	775.52	123.38	3269294.79	1588348.86	40°56'39.547"N	104°31'30.872"W	0.10	
5392.00	0.090	98.290	5292.14	-765.98	775.55	123.56	3269294.97	1588348.89	40°56'39.547"N	104°31'30.870"W	0.08	
5487.00	0.070	112.230	5387.14	-765.94	775.51	123.69	3269295.10	1588348.86	40°56'39.547"N	104°31'30.868"W	0.03	
5580.00	0.030	48.050	5480.14	-765.93	775.51	123.76	3269295.17	1588348.86	40°56'39.547"N	104°31'30.867"W	0.07	
5675.00	0.070	142.590	5575.14	-765.89	775.48	123.81	3269295.22	1588348.83	40°56'39.546"N	104°31'30.867"W	0.08	
5770.00	0.030	271.100	5670.14	-765.85	775.43	123.82	3269295.23	1588348.78	40°56'39.546"N	104°31'30.866"W	0.10	
5865.00	0.030	32.370	5765.14	-765.87	775.46	123.81	3269295.22	1588348.80	40°56'39.546"N	104°31'30.867"W	0.06	
5959.00	0.070	317.140	5859.14	-765.93	775.52	123.79	3269295.20	1588348.87	40°56'39.547"N	104°31'30.867"W	0.07	
6055.00	0.070	282.050	5955.14	-766.00	775.57	123.69	3269295.10	1588348.92	40°56'39.547"N	104°31'30.868"W	0.04	
6150.00	0.070	120.620	6050.14	-765.98	775.56	123.68	3269295.09	1588348.90	40°56'39.547"N	104°31'30.868"W	0.15	
6243.00	0.140	217.400	6143.14	-765.86	775.44	123.66	3269295.07	1588348.78	40°56'39.546"N	104°31'30.869"W	0.18	
6337.00	0.380	268.340	6237.14	-765.79	775.34	123.28	3269294.69	1588348.68	40°56'39.545"N	104°31'30.874"W	0.33	
6432.00	0.260	329.410	6332.14	-765.99	775.51	122.86	3269294.27	1588348.85	40°56'39.547"N	104°31'30.879"W	0.36	
6526.00	0.060	73.860	6426.14	-766.19	775.71	122.80	3269294.20	1588349.05	40°56'39.549"N	104°31'30.880"W	0.30	
6620.00	0.110	20.170	6520.14	-766.28	775.81	122.87	3269294.28	1588349.15	40°56'39.550"N	104°31'30.879"W	0.09	
6714.00	0.140	344.880	6614.14	-766.48	776.00	122.87	3269294.28	1588349.34	40°56'39.551"N	104°31'30.879"W	0.09	
6809.00	0.090	44.190	6709.14	-766.64	776.17	122.90	3269294.30	1588349.51	40°56'39.553"N	104°31'30.879"W	0.13	
6905.00	0.100	350.510	6805.14	-766.78	776.31	122.94	3269294.34	1588349.65	40°56'39.554"N	104°31'30.878"W	0.09	
6998.00	0.120	10.520	6898.14	-766.95	776.48	122.94	3269294.34	1588349.82	40°56'39.556"N	104°31'30.878"W	0.05	
7093.00	0.560	194.720	6993.13	-766.61	776.13	122.84	3269294.24	1588349.47	40°56'39.553"N	104°31'30.879"W	0.72	
7188.00	8.780	187.960	7087.74	-759.05	768.49	121.72	3269293.20	1588341.81	40°56'39.477"N	104°31'30.894"W	8.66	
7284.00	14.790	180.980	7181.68	-739.65	748.96	120.49	3269292.19	1588322.27	40°56'39.284"N	104°31'30.910"W	6.42	
7378.00	21.610	178.060	7270.92	-710.35	719.63	120.87	3269292.90	1588292.95	40°56'38.994"N	104°31'30.905"W	7.32	
7472.00	28.940	176.760	7355.87	-670.25	679.57	122.75	3269295.21	1588252.91	40°56'38.599"N	104°31'30.881"W	7.82	
7568.00	37.660	178.200	7436.03	-617.61	626.97	124.98	3269298.03	1588200.33	40°56'38.079"N	104°31'30.851"W	9.12	
7664.00	45.890	181.970	7507.57	-553.89	563.09	124.72	3269298.46	1588136.45	40°56'37.448"N	104°31'30.855"W	8.96	
7757.00	54.490	184.610	7567.06	-483.07	491.85	120.52	3269295.05	1588065.17	40°56'36.744"N	104°31'30.910"W	9.50	
7853.00	61.090	185.210	7618.21	-402.80	410.97	113.56	3269288.97	1587984.22	40°56'35.945"N	104°31'31.000"W	6.90	
7949.00	68.240	178.050	7659.30	-316.53	324.37	111.25	3269287.62	1587897.59	40°56'35.089"N	104°31'31.030"W	10.04	
8044.00	76.680	174.950	7687.91	-226.04	234.05	116.83	3269294.19	1587807.34	40°56'34.197"N	104°31'30.958"W	9.41	
8140.00	85.990	175.860	7702.36	-131.25	139.56	124.42	3269302.82	1587712.93	40°56'33.263"N	104°31'30.859"W	9.74	
8234.00	89.820	176.220	7705.80	-37.33	45.86	130.91	3269310.33	1587619.31	40°56'32.337"N	104°31'30.774"W	4.09	
8329.00	89.630	174.210	7706.25	57.64	-48.80	138.83	3269319.30	1587524.74	40°56'31.402"N	104°31'30.671"W	2.13	
8423.00	89.850	170.440	7706.68	151.40	-141.94	151.38	3269332.87	1587431.74	40°56'30.482"N	104°31'30.507"W	4.02	
8519.00	90.060	168.200	7706.76	246.68	-236.27	169.17	3269351.70	1587337.61	40°56'29.549"N	104°31'30.276"W	2.34	
8614.00	89.970	169.130	7706.73	340.83	-329.42	187.84	3269371.39	1587244.67	40°56'28.629"N	104°31'30.032"W	0.98	
8709.00	90.090	171.440	7706.68	435.30	-423.05	203.87	3269388.45	1587151.22	40°56'27.704"N	104°31'29.823"W	2.43	
8804.00	90.150	174.500	7706.48	530.13	-517.32	215.50	3269401.11	1587057.07	40°56'26.772"N	104°31'29.672"W	3.22	
8898.00	90.370	176.860	7706.06	624.12	-611.05	222.58	3269409.22	1586963.43	40°56'25.846"N	104°31'29.580"W	2.52	

Actual Wellpath Report

SALT RANCH FEE 201-1015H AWP
Page 4 of 8

REFERENCE WELLPATH IDENTIFICATION

Operator	CCRP OPERATING INC.	Slot	SLOT#01 SALT RANCH FEE 201-1015H (358'FNL & 578'FEL, SEC.10)
Area	COLORADO	Well	SALT RANCH FEE 201-1015H
Field	WELD COUNTY (NAD 83/TN)	Wellbore	SALT RANCH FEE 201-1015H AWP
Facility	SEC.10-T11N-R64W		

WELLPATH DATA (191 stations)

MD [ft]	Inclination [°]	Azimuth [°]	TVD [ft]	Vert Sect [ft]	North [ft]	East [ft]	Grid East [US ft]	Grid North [US ft]	Latitude	Longitude	DLS [°/100ft]	Comments
8993.00	90.120	178.970	7705.65	719.07	-705.98	226.03	3269413.72	1586868.54	40°56'24.908"N	104°31'29.535"W	2.24	
9087.00	90.030	178.890	7705.53	812.97	-799.96	227.79	3269416.51	1586774.58	40°56'23.980"N	104°31'29.512"W	0.13	
9182.00	90.250	181.210	7705.29	907.77	-894.96	227.71	3269417.47	1586679.59	40°56'23.041"N	104°31'29.513"W	2.45	
9277.00	90.280	184.050	7704.85	1002.18	-989.85	223.35	3269414.15	1586584.65	40°56'22.104"N	104°31'29.570"W	2.99	
9371.00	90.250	177.330	7704.42	1095.85	-1083.78	222.22	3269414.05	1586490.71	40°56'21.175"N	104°31'29.585"W	7.15	
9464.00	90.180	173.800	7704.07	1188.82	-1176.49	229.41	3269422.26	1586398.08	40°56'20.259"N	104°31'29.491"W	3.80	
9557.00	90.310	170.820	7703.67	1281.59	-1268.64	241.85	3269435.72	1586306.07	40°56'19.349"N	104°31'29.329"W	3.21	
9652.00	90.220	168.720	7703.23	1375.96	-1362.13	258.72	3269453.61	1586212.77	40°56'18.425"N	104°31'29.109"W	2.21	
9747.00	90.280	170.480	7702.82	1470.31	-1455.56	275.87	3269471.79	1586119.53	40°56'17.502"N	104°31'28.885"W	1.85	
9840.00	90.180	170.170	7702.44	1562.80	-1547.24	291.50	3269488.42	1586028.03	40°56'16.596"N	104°31'28.682"W	0.35	
9934.00	89.630	170.510	7702.60	1656.29	-1639.90	307.27	3269505.22	1585935.54	40°56'15.681"N	104°31'28.476"W	0.69	
10030.00	89.600	170.170	7703.25	1751.77	-1734.54	323.38	3269522.36	1585841.08	40°56'14.745"N	104°31'28.266"W	0.36	
10126.00	90.030	173.240	7703.56	1847.45	-1829.52	337.23	3269537.25	1585746.25	40°56'13.807"N	104°31'28.086"W	3.23	
10221.00	89.940	176.430	7703.58	1942.40	-1924.13	345.78	3269546.85	1585651.75	40°56'12.872"N	104°31'27.975"W	3.36	
10317.00	90.220	178.680	7703.45	2038.37	-2020.03	349.88	3269551.99	1585555.89	40°56'11.925"N	104°31'27.921"W	2.36	
10413.00	89.290	177.200	7703.86	2134.33	-2115.97	353.33	3269556.50	1585460.00	40°56'10.977"N	104°31'27.876"W	1.82	
10508.00	89.350	173.060	7704.98	2229.28	-2210.60	361.39	3269565.60	1585365.46	40°56'10.042"N	104°31'27.771"W	4.36	
10603.00	89.420	172.880	7706.00	2324.12	-2304.88	373.02	3269578.26	1585271.31	40°56'09.110"N	104°31'27.620"W	0.20	
10698.00	89.290	174.300	7707.07	2419.00	-2399.27	383.62	3269589.90	1585177.03	40°56'08.177"N	104°31'27.482"W	1.50	
10792.00	90.580	177.080	7707.18	2512.98	-2493.00	390.68	3269598.00	1585083.39	40°56'07.251"N	104°31'27.390"W	3.26	
10887.00	89.230	177.510	7707.34	2607.97	-2587.89	395.17	3269603.52	1584988.55	40°56'06.314"N	104°31'27.331"W	1.49	
10982.00	89.350	175.850	7708.52	2702.95	-2682.72	400.67	3269610.07	1584893.78	40°56'05.377"N	104°31'27.260"W	1.75	
11076.00	89.540	173.950	7709.43	2796.92	-2776.34	409.02	3269619.45	1584800.26	40°56'04.452"N	104°31'27.151"W	2.03	
11172.00	89.200	172.150	7710.48	2892.75	-2871.62	420.64	3269632.11	1584705.11	40°56'03.510"N	104°31'27.000"W	1.91	
11266.00	89.570	171.760	7711.49	2986.48	-2964.69	433.79	3269646.29	1584612.18	40°56'02.591"N	104°31'26.828"W	0.57	
11306.00	89.780	171.660	7711.72	3026.35	-3004.27	439.56	3269652.49	1584572.67	40°56'02.200"N	104°31'26.753"W	0.58	
11402.00	90.340	168.670	7711.62	3121.78	-3098.85	455.96	3269669.92	1584478.27	40°56'01.265"N	104°31'26.539"W	3.17	
11497.00	90.250	166.220	7711.13	3215.64	-3191.57	476.61	3269691.59	1584385.78	40°56'00.349"N	104°31'26.270"W	2.58	
11592.00	90.340	172.310	7710.64	3309.88	-3284.86	494.29	3269710.30	1584292.69	40°55'59.427"N	104°31'26.040"W	6.41	
11688.00	90.620	178.640	7709.83	3405.82	-3380.51	501.86	3269718.92	1584197.13	40°55'58.482"N	104°31'25.941"W	6.60	
11783.00	90.370	181.500	7709.01	3500.60	-3475.50	501.75	3269719.85	1584102.14	40°55'57.544"N	104°31'25.943"W	3.02	
11877.00	90.580	182.330	7708.23	3594.15	-3569.44	498.60	3269717.74	1584008.17	40°55'56.615"N	104°31'25.984"W	0.91	
11969.00	90.430	179.980	7707.42	3685.81	-3661.41	496.75	3269716.90	1583916.18	40°55'55.707"N	104°31'26.008"W	2.56	
12062.00	90.490	174.740	7706.67	3778.75	-3754.28	501.03	3269722.20	1583823.36	40°55'54.789"N	104°31'25.952"W	5.63	
12157.00	90.520	166.640	7705.84	3873.22	-3847.95	516.39	3269738.59	1583729.87	40°55'53.863"N	104°31'25.752"W	8.53	
12252.00	90.430	161.260	7705.05	3965.98	-3939.21	542.64	3269765.84	1583638.90	40°55'52.962"N	104°31'25.410"W	5.66	
12347.00	90.180	163.360	7704.54	4058.15	-4029.71	571.51	3269795.70	1583548.72	40°55'52.067"N	104°31'25.034"W	2.23	
12441.00	89.940	171.910	7704.44	4150.99	-4211.44	591.62	3269816.82	1583457.21	40°55'51.161"N	104°31'24.772"W	9.10	
12537.00	90.150	176.240	7704.37	4246.89	-4216.91	601.53	3269827.77	1583361.85	40°55'50.218"N	104°31'24.643"W	4.52	
12632.00	90.120	170.520	7704.14	4341.73	-4311.23	612.47	3269839.76	1583267.65	40°55'49.286"N	104°31'24.501"W	6.02	
12726.00	89.940	168.760	7704.10	4435.09	-4403.70	629.38	3269857.68	1583175.38	40°55'48.372"N	104°31'24.280"W	1.88	
12820.00	90.120	175.970	7704.05	4528.81	-4496.80	641.86	3269871.18	1583082.41	40°55'47.452"N	104°31'24.118"W	7.67	
12915.00	90.120	178.690	7703.85	4623.78	-4591.69	646.28	3269876.65	1582987.57	40°55'46.515"N	104°31'24.060"W	2.86	
13011.00	90.280	179.080	7703.51	4719.68	-4687.67	648.15	3269879.57	1582891.62	40°55'45.566"N	104°31'24.036"W	0.44	
13104.00	90.310	177.290	7703.03	4812.63	-4780.62	651.10	3269883.54	1582798.70	40°55'44.648"N	104°31'23.998"W	1.92	

Actual Wellpath Report

SALT RANCH FEE 201-1015H AWP

Page 5 of 8

REFERENCE WELLPATH IDENTIFICATION

Operator	CCRP OPERATING INC.	Slot	SLOT#01 SALT RANCH FEE 201-1015H (358'FNL & 578'FEL, SEC.10)
Area	COLORADO	Well	SALT RANCH FEE 201-1015H
Field	WELD COUNTY (NAD 83/TN)	Wellbore	SALT RANCH FEE 201-1015H AWP
Facility	SEC.10-T11N-R64W		

WELLPATH DATA (191 stations)

MD [ft]	Inclination [°]	Azimuth [°]	TVD [ft]	Vert Sect [ft]	North [ft]	East [ft]	Grid East [US ft]	Grid North [US ft]	Latitude	Longitude	DLS [°/100ft]	Comments
13199.00	90.220	176.520	7702.59	4907.62	-4875.48	656.22	3269889.71	1582703.90	40°55'43.711"N	104°31'23.931"W	0.82	
13295.00	90.180	175.230	7702.26	5003.62	-4971.23	663.13	3269897.66	1582608.23	40°55'42.765"N	104°31'23.841"W	1.34	
13391.00	90.120	177.740	7702.01	5099.61	-5067.04	669.02	3269904.60	1582512.49	40°55'41.818"N	104°31'23.764"W	2.62	
13487.00	90.490	175.410	7701.50	5195.60	-5162.86	674.75	3269911.39	1582416.74	40°55'40.871"N	104°31'23.690"W	2.46	
13582.00	90.430	175.130	7700.73	5290.58	-5257.53	682.58	3269920.26	1582322.15	40°55'39.936"N	104°31'23.588"W	0.30	
13678.00	90.550	175.610	7699.91	5386.56	-5353.22	690.33	3269929.06	1582226.56	40°55'38.990"N	104°31'23.487"W	0.52	
13771.00	90.220	175.340	7699.29	5479.55	-5445.92	697.67	3269937.42	1582133.93	40°55'38.074"N	104°31'23.391"W	0.46	
13867.00	90.030	178.390	7699.08	5575.54	-5541.77	702.92	3269943.72	1582038.15	40°55'37.127"N	104°31'23.323"W	3.18	
13963.00	89.690	179.700	7699.31	5671.42	-5637.75	704.52	3269946.38	1581942.19	40°55'36.179"N	104°31'23.302"W	1.41	
14059.00	89.510	181.040	7699.98	5767.18	-5733.75	703.90	3269946.81	1581846.19	40°55'35.230"N	104°31'23.310"W	1.41	
14155.00	89.510	180.350	7700.80	5862.89	-5829.73	702.73	3269946.70	1581750.19	40°55'34.282"N	104°31'23.325"W	0.72	
14250.00	89.690	180.660	7701.47	5957.64	-5924.73	701.90	3269946.91	1581655.19	40°55'33.343"N	104°31'23.336"W	0.38	
14345.00	89.820	181.850	7701.87	6052.28	-6019.70	699.82	3269945.87	1581560.20	40°55'32.405"N	104°31'23.363"W	1.26	
14441.00	89.720	184.280	7702.26	6147.60	-6115.56	694.68	3269941.79	1581464.29	40°55'31.458"N	104°31'23.430"W	2.53	
14536.00	89.290	183.840	7703.08	6241.73	-6210.32	687.96	3269936.11	1581369.46	40°55'30.521"N	104°31'23.518"W	0.65	
14631.00	89.510	183.750	7704.07	6335.92	-6305.10	681.67	3269930.86	1581274.61	40°55'29.585"N	104°31'23.600"W	0.25	
14727.00	89.420	183.500	7704.97	6431.13	-6400.91	675.60	3269925.84	1581178.74	40°55'28.638"N	104°31'23.679"W	0.28	
14822.00	89.480	181.970	7705.88	6525.53	-6495.79	671.07	3269922.35	1581083.81	40°55'27.701"N	104°31'23.738"W	1.61	
14916.00	89.450	180.960	7706.76	6619.14	-6589.75	668.67	3269920.98	1580989.82	40°55'26.772"N	104°31'23.769"W	1.07	
15012.00	89.380	180.180	7707.74	6714.87	-6685.74	667.71	3269921.08	1580893.82	40°55'25.824"N	104°31'23.782"W	0.82	
15107.00	89.200	178.410	7708.92	6809.73	-6780.73	668.88	3269923.30	1580798.86	40°55'24.885"N	104°31'23.767"W	1.87	
15201.00	89.480	178.080	7710.00	6903.67	-6874.67	671.76	3269927.21	1580704.94	40°55'23.957"N	104°31'23.729"W	0.46	
15296.00	89.820	177.630	7710.58	6998.63	-6969.61	675.31	3269931.81	1580610.06	40°55'23.019"N	104°31'23.683"W	0.59	
15391.00	89.510	178.970	7711.14	7093.57	-7064.56	678.13	3269935.67	1580515.13	40°55'22.081"N	104°31'23.646"W	1.45	
15486.00	89.290	178.810	7712.13	7188.47	-7159.54	679.97	3269938.55	1580420.18	40°55'21.142"N	104°31'23.622"W	0.29	
15582.00	89.350	179.580	7713.27	7284.34	-7255.52	681.32	3269940.95	1580324.22	40°55'20.194"N	104°31'23.605"W	0.80	
15677.00	89.850	181.540	7713.93	7379.07	-7350.51	680.39	3269941.07	1580229.22	40°55'19.255"N	104°31'23.617"W	2.13	
15773.00	89.880	183.140	7714.16	7474.53	-7446.42	676.47	3269938.20	1580133.26	40°55'18.308"N	104°31'23.668"W	1.67	
15868.00	89.820	184.530	7714.41	7568.71	-7541.21	670.12	3269932.89	1580038.41	40°55'17.371"N	104°31'23.751"W	1.46	
15964.00	89.570	182.310	7714.92	7663.97	-7637.03	664.39	3269928.22	1579947.53	40°55'16.424"N	104°31'23.825"W	2.33	
16059.00	89.970	181.430	7715.30	7758.52	-7731.98	661.29	3269926.16	1579847.55	40°55'15.486"N	104°31'23.866"W	1.02	
16154.00	89.780	182.070	7715.51	7853.09	-7826.93	658.39	3269924.30	1579752.57	40°55'14.548"N	104°31'23.904"W	0.70	
16248.00	89.780	178.930	7715.87	7946.82	-7920.92	657.57	3269924.52	1579658.58	40°55'13.619"N	104°31'23.914"W	3.34	
16341.00	89.940	178.660	7716.10	8039.74	-8013.90	659.53	3269927.49	1579565.63	40°55'12.701"N	104°31'23.889"W	0.34	
16435.00	90.000	176.210	7716.15	8133.71	-8107.80	663.73	3269932.73	1579471.78	40°55'11.773"N	104°31'23.834"W	2.61	
16530.00	89.940	176.000	7716.20	8228.71	-8202.58	670.19	3269940.23	1579377.07	40°55'10.836"N	104°31'23.750"W	0.23	
16626.00	89.750	176.700	7716.46	8324.71	-8298.38	676.30	3269947.39	1579281.34	40°55'09.890"N	104°31'23.670"W	0.76	
16722.00	89.880	178.420	7716.77	8420.68	-8394.29	680.39	3269952.53	1579185.47	40°55'08.942"N	104°31'23.617"W	1.80	
16816.00	89.850	181.980	7716.99	8514.45	-8488.27	680.06	3269953.23	1579091.49	40°55'08.013"N	104°31'23.622"W	3.79	
16912.00	89.320	184.210	7717.68	8609.77	-8584.12	674.87	3269949.11	1578995.59	40°55'07.066"N	104°31'23.689"W	2.39	
17008.00	89.570	184.700	7718.61	8704.79	-8679.83	667.42	3269942.70	1578899.80	40°55'06.121"N	104°31'23.786"W	0.57	
17102.00	89.510	184.450	7719.37	8797.81	-8773.53	659.92	3269936.23	1578806.02	40°55'05.195"N	104°31'23.884"W	0.27	
17197.00	89.510	187.180	7720.18	8891.50	-8868.03	650.30	3269927.65	1578711.42	40°55'04.261"N	104°31'24.009"W	2.87	
17292.00	89.820	185.900	7720.73	8984.98	-8962.40	639.48	3269917.87	1578616.93	40°55'03.329"N	104°31'24.150"W	1.39	
17386.00	89.260	184.660	7721.49	9077.83	-9056.00	630.83	3269910.24	1578523.24	40°55'02.404"N	104°31'24.263"W	1.45	

Actual Wellpath Report

SALT RANCH FEE 201-1015H AWP

Page 6 of 8

REFERENCE WELLPATH IDENTIFICATION

Operator	CCRP OPERATING INC.	Slot	SLOT#01 SALT RANCH FEE 201-1015H (358'FNL & 578'FEL, SEC.10)
Area	COLORADO	Well	SALT RANCH FEE 201-1015H
Field	WELD COUNTY (NAD 83/TN)	Wellbore	SALT RANCH FEE 201-1015H AWB
Facility	SEC.10-T11N-R64W		

WELLPATH DATA (191 stations)

MD [ft]	Inclination [°]	Azimuth [°]	TVD [ft]	Vert Sect [ft]	North [ft]	East [ft]	Grid East [US ft]	Grid North [US ft]	Latitude	Longitude	DLS [°/100ft]	Comments
17482.00	89.480	181.730	7722.55	9173.12	-9151.83	625.48	3269905.95	1578427.35	40°55'01.457"N	104°31'24.333"W	3.06	
17578.00	89.600	177.830	7723.32	9268.92	-9247.81	625.85	3269907.37	1578331.38	40°55'00.509"N	104°31'24.328"W	4.06	
17673.00	89.320	175.910	7724.21	9363.91	-9342.66	631.03	3269913.60	1578236.59	40°54'59.571"N	104°31'24.260"W	2.04	
17768.00	89.290	174.920	7725.36	9458.89	-9437.35	638.63	3269922.23	1578141.99	40°54'58.636"N	104°31'24.162"W	1.04	
17863.00	89.420	172.750	7726.43	9553.79	-9531.79	648.83	3269933.47	1578047.67	40°54'57.703"N	104°31'24.029"W	2.29	
17958.00	89.600	176.880	7727.25	9648.73	-9626.37	657.41	3269943.09	1577953.18	40°54'56.768"N	104°31'23.917"W	4.35	
18053.00	89.750	181.240	7727.79	9743.60	-9721.34	658.97	3269945.69	1577858.23	40°54'55.830"N	104°31'23.897"W	4.59	
18148.00	89.380	185.370	7728.51	9837.86	-9816.16	653.49	3269941.26	1577763.36	40°54'54.893"N	104°31'23.968"W	4.36	
18243.00	89.780	181.570	7729.20	9932.10	-9910.96	647.74	3269936.55	1577668.49	40°54'53.956"N	104°31'24.043"W	4.02	
18337.00	89.630	180.810	7729.69	10025.76	-10004.94	645.79	3269935.64	1577574.50	40°54'53.028"N	104°31'24.068"W	0.82	LAST BHGE MWD SURVEY
18383.00	89.630	180.810	7729.98	10071.62	-10050.93	645.14	3269935.49	1577528.50	40°54'52.573"N	104°31'24.077"W	0.00	PROJECTION TO BIT

HOLE & CASING SECTIONS - Ref Wellbore: SALT RANCH FEE 201-1015H AWP Ref Wellpath: SALT RANCH FEE 201-1015H AWP

String/Diameter	Start MD [ft]	End MD [ft]	Interval [ft]	Start TVD [ft]	End TVD [ft]	Start N/S [ft]	Start E/W [ft]	End N/S [ft]	End E/W [ft]
13.5in Open Hole	92.00	2222.00	2130.00	92.00	2178.60	0.01	-0.04	354.23	83.99
9.625in Casing Surface	22.00	2181.00	2159.00	22.00	2139.06	0.00	0.00	343.58	82.10
8.5in Open Hole	2222.00	18383.00	16161.00	2178.60	7729.98	354.23	83.99	-10050.93	645.14

Actual Wellpath Report

SALT RANCH FEE 201-1015H AWP
Page 7 of 8

REFERENCE WELLPATH IDENTIFICATION

Operator	CCRP OPERATING INC.	Slot	SLOT#01 SALT RANCH FEE 201-1015H (358'FNL & 578'FEL, SEC.10)
Area	COLORADO	Well	SALT RANCH FEE 201-1015H
Field	WELD COUNTY (NAD 83/TN)	Wellbore	SALT RANCH FEE 201-1015H AWB
Facility	SEC.10-T11N-R64W		

TARGETS

Name	TVD [ft]	North [ft]	East [ft]	Grid East [US ft]	Grid North [US ft]	Latitude	Longitude	Shape
SEC.02-T11N-R64W	0.00	0.40	-29.85	3269150.08	1587572.09	40°56'31.888"N	104°31'32.869"W	polygon
SEC.03-T11N-R64W	0.00	0.40	-29.85	3269150.08	1587572.09	40°56'31.888"N	104°31'32.869"W	polygon
SEC.10-T11N-R64W	0.00	0.40	-29.85	3269150.08	1587572.09	40°56'31.888"N	104°31'32.869"W	polygon
SEC.15-T11N-R64W	0.00	0.40	-29.85	3269150.08	1587572.09	40°56'31.888"N	104°31'32.869"W	polygon
SEC.34-T12N-R64W	0.00	0.40	-29.85	3269150.08	1587572.09	40°56'31.888"N	104°31'32.869"W	polygon
SEC.35-T12N-R64W	0.00	0.40	-29.85	3269150.08	1587572.09	40°56'31.888"N	104°31'32.869"W	polygon
SALT RANCH FEE 201-1015H LPL REV-1 (735'FNL & 350'FEL, SEC.10)	7666.00	-375.60	263.60	3269447.65	1587199.32	40°56'28.173"N	104°31'29.045"W	point
SALT RANCH FEE 201-1015H LPL REV-2 (300'FNL & 400'FEL, SEC.10)	7685.00	60.60	178.00	3269357.26	1587634.57	40°56'32.483"N	104°31'30.161"W	point
SALT RANCH FEE 201-1015H WP#1 REV-1	7692.60	-5079.30	702.40	3269938.12	1582500.60	40°55'41.697"N	104°31'23.329"W	point
SALT RANCH FEE 201-1015H LPL REV-3 (300'FNL & 400'FEL, SEC.10)	7705.00	60.60	178.00	3269357.26	1587634.57	40°56'32.483"N	104°31'30.161"W	point
SALT RANCH FEE 201-1015H BHL REV-3 (300'FSL & 350'FEL, SEC.15)	7720.00	-10101.40	652.00	3269942.90	1577478.11	40°54'52.074"N	104°31'23.988"W	point
SALT RANCH FEE 201-1015H BHL REV-1 (300'FSL & 350'FEL, SEC.15)	7721.00	-10101.40	652.00	3269942.90	1577478.11	40°54'52.074"N	104°31'23.988"W	point
SALT RANCH FEE 201-1015H BHL REV-2 (300'FSL & 350'FEL, SEC.15)	7724.00	-10101.40	652.00	3269942.90	1577478.11	40°54'52.074"N	104°31'23.988"W	point
SALT RANCH FEE 201-1015H HARDLINES (300' SETBACKS)	7905.00	0.40	-29.85	3269150.08	1587572.09	40°56'31.888"N	104°31'32.869"W	polygon
SALT RANCH FEE 502-1034H HARDLINES (600' SETBACKS)	7905.00	0.40	-29.85	3269150.08	1587572.09	40°56'31.888"N	104°31'32.869"W	polygon
SALT RANCH FEE 506-1035H HARDLINES (600' SETBACKS)	7905.00	0.40	-29.85	3269150.08	1587572.09	40°56'31.888"N	104°31'32.869"W	polygon

WELLPATH COMPOSITION - Ref Wellbore: SALT RANCH FEE 201-1015H AWB Ref Wellpath: SALT RANCH FEE 201-1015H AWP

Start MD [ft]	End MD [ft]	Positional Uncertainty Model	Log Name/Comment	Wellbore
22.00	2047.00	BHI NaviTrak (Rotating+Axial Corr)	BHGE NAVITRAK (ROTATING + AXIAL CORR) <22 - 2047>	SALT RANCH FEE 201-1015H AWB
2047.00	18337.00	BHI AutoTrak Curve (Axial Corr, Short spacing)	BHGE AUTOTRAK CURVE 8 1/2" MONOBORE (AXIAL CORR, SHORT) <2047 - 18337>	SALT RANCH FEE 201-1015H AWB
18337.00	18383.00	Blind Drilling (std)	Projection to bit	SALT RANCH FEE 201-1015H AWB

Actual Wellpath Report

SALT RANCH FEE 201-1015H AWP
Page 8 of 8

REFERENCE WELLPATH IDENTIFICATION			
Operator	CCRP OPERATING INC.	Slot	SLOT#01 SALT RANCH FEE 201-1015H (358'FNL & 578'FEL, SEC.10)
Area	COLORADO	Well	SALT RANCH FEE 201-1015H
Field	WELD COUNTY (NAD 83/TN)	Wellbore	SALT RANCH FEE 201-1015H AWB
Facility	SEC.10-T11N-R64W		

WELLPATH COMMENTS				
MD [ft]	Inclination [°]	Azimuth [°]	TVD [ft]	Comment
238.00	0.210	289.910	238.00	FIRST BHGE MWD SURVEY
18337.00	89.630	180.810	7729.69	LAST BHGE MWD SURVEY
18383.00	89.630	180.810	7729.98	PROJECTION TO BIT