



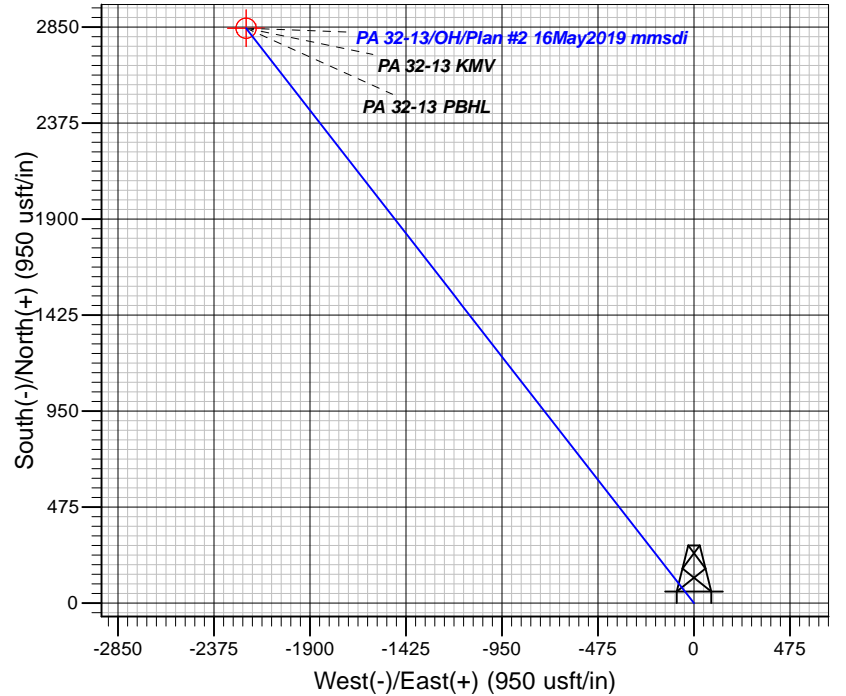
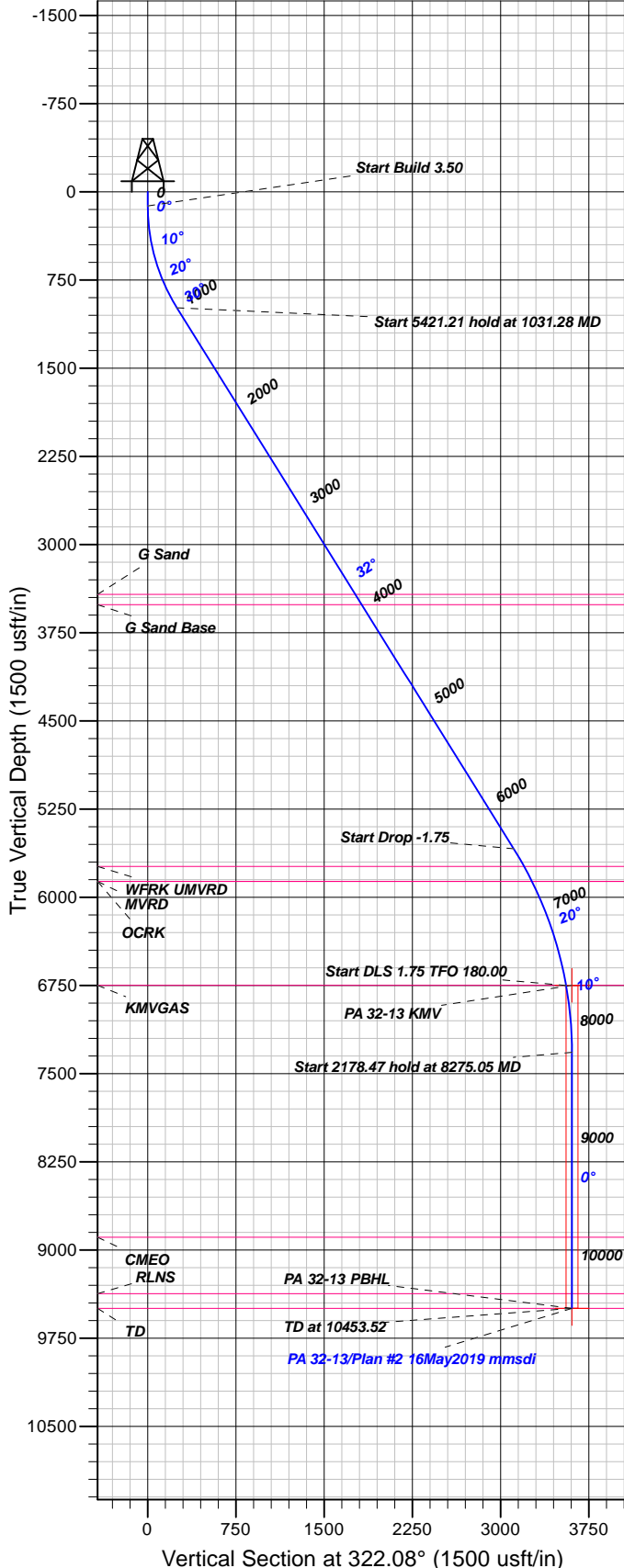
Azimuths to True North
Magnetic North: 9.32°

Magnetic Field
Strength: 51491.8snT
Dip Angle: 65.75°
Date: 5/2/2019
Model: HDGM

Well Details: PA 32-13

GL 6571.1& RKB 24' @ 6595.10usft (H&P 318)

+N/-S	+E/-W	Northing	Easting	Latitude	Longitude	Slot
0.00	0.00	1623811.10	2311223.90	39.5207275	-107.9418852	PA 32-13 (B11)



FORMATION TOP DETAILS

TVDPth	MDPath	Formation
3423.00	3902.90	G Sand
3512.00	4007.72	G Sand Base
5737.00	6625.63	WFRK UMVRD
5865.00	6770.07	OCRK
5865.00	6770.07	MVRD
6749.00	7703.62	KMVGAS
8891.00	9848.52	CMEO
9371.00	10328.52	RLNS
9496.00	10453.52	TD

Plan: Plan #2 16May2019 mmsdi

12:08, May 20 2019
Created By: Mel Mireles

PROJECT DETAILS: Garfield County, CO NAD83

Geodetic System: US State Plane 1983
Datum: North American Datum 1983
Ellipsoid: GRS 1980
Zone: Colorado Central Zone

System Datum: Mean Sea Level

CASING DETAILS

No casing data is available

SECTION DETAILS

Sec	MD	Inc	Azi	TVD	+N/-S	+E/-W	Dleg	TFace	Vsect	Target
1	0.00	0.00	0.00	0.00	0.00	0.00	0.00	0.00	0.00	
2	120.00	0.00	0.00	120.00	0.00	0.00	0.00	0.00	0.00	
3	1031.28	31.89	322.08	984.94	194.98	-151.89	3.50	322.08	247.16	
4	6452.49	31.89	322.08	5587.66	2454.61	-1912.17	0.00	0.003111.51		
5	7703.62	10.00	322.08	6749.00	2805.33	-2185.38	1.75	180.003556.09		
6	8275.05	0.00	0.00	7317.53	2844.57	-2215.95	1.75	180.003605.83		
7	10453.52	0.00	0.00	9496.00	2844.57	-2215.95	0.00	0.003605.83		PA 32-13 PBHL

DESIGN TARGET DETAILS

Name	TVD	+N/-S	+E/-W	Northing	Easting	Latitude	Longitude	Shape
PA 32-13 KMV	6749.00	2844.57	-2215.95	1626714.20	2309085.20	39.5285368	-107.9497412	Circle (Radius: 50.00)
- plan misses target center by 49.00usft at 7711.54usft MD (6756.80 TVD, 2806.41 N, -2186.22 E)								
PA 32-13 PBHL	9496.00	2844.57	-2215.95	1626714.20	2309085.20	39.5285368	-107.9497412	Point
- plan hits target center								



TEP Rocky Mountain LLC

Garfield County, CO NAD83

PA 44-13 Pad

PA 32-13 - Slot PA 32-13 (B11)

OH

Plan: Plan #2 16May2019 mmsdi

Standard Planning Report

20 May, 2019



Database:	Grand Junction District	Local Co-ordinate Reference:	Well PA 32-13 - Slot PA 32-13 (B11)
Company:	TEP Rocky Mountain LLC	TVD Reference:	GL 6571.1& RKB 24' @ 6595.10usft (H&P 318)
Project:	Garfield County, CO NAD83	MD Reference:	GL 6571.1& RKB 24' @ 6595.10usft (H&P 318)
Site:	PA 44-13 Pad	North Reference:	True
Well:	PA 32-13	Survey Calculation Method:	Minimum Curvature
Wellbore:	OH		
Design:	Plan #2 16May2019 mmsdi		

Project	Garfield County, CO NAD83		
Map System:	US State Plane 1983	System Datum:	Mean Sea Level
Geo Datum:	North American Datum 1983		
Map Zone:	Colorado Central Zone		

Site		PA 44-13 Pad			
Site Position:		Northing:	1,623,813.70 usft	Latitude:	39.5207354
From:	Map	Easting:	2,311,233.50 usft	Longitude:	-107.9418514
Position Uncertainty:	0.00 usft	Slot Radius:	13.20 in	Grid Convergence:	-1.54 °

Well	PA 32-13 - Slot PA 32-13 (B11)					
Well Position	+N/-S	-2.86 usft	Northing:	1,623,811.10 usft	Latitude:	39.5207276
	+E/-W	-9.53 usft	Easting:	2,311,223.90 usft	Longitude:	-107.9418852
Position Uncertainty		0.00 usft	Wellhead Elevation:	0.00 usft	Ground Level:	6,571.10 usft

Wellbore	OH				
Magnetics	Model Name	Sample Date	Declination (°)	Dip Angle (°)	Field Strength (nT)
	HDGM	5/2/2019	9.32	65.75	51,492

Design	Plan #2 16May2019 mmsdi			
Audit Notes:				
Version:	Phase:	PLAN	Tie On Depth:	0.00
Vertical Section:	Depth From (TVD) (usft)	+N/-S (usft)	+E/-W (usft)	Direction (°)
	0.00	0.00	0.00	322.08

Plan Sections										
Measured Depth (usft)	Inclination (°)	Azimuth (°)	Vertical Depth (usft)	+N/-S (usft)	+E/-W (usft)	Dogleg Rate (°/100usft)	Build Rate (°/100usft)	Turn Rate (°/100usft)	TFO (°)	Target
0.00	0.00	0.00	0.00	0.00	0.00	0.00	0.00	0.00	0.00	
120.00	0.00	0.00	120.00	0.00	0.00	0.00	0.00	0.00	0.00	
1,031.28	31.89	322.08	984.94	194.98	-151.89	3.50	3.50	0.00	322.08	
6,452.49	31.89	322.08	5,587.66	2,454.61	-1,912.17	0.00	0.00	0.00	0.00	
7,703.62	10.00	322.08	6,749.00	2,805.33	-2,185.38	1.75	-1.75	0.00	180.00	
8,275.05	0.00	0.00	7,317.53	2,844.57	-2,215.95	1.75	-1.75	6.64	180.00	
10,453.52	0.00	0.00	9,496.00	2,844.57	-2,215.95	0.00	0.00	0.00	0.00	PA 32-13 PBHL

Database:	Grand Junction District	Local Co-ordinate Reference:	Well PA 32-13 - Slot PA 32-13 (B11)
Company:	TEP Rocky Mountain LLC	TVD Reference:	GL 6571.1& RKB 24' @ 6595.10usft (H&P 318)
Project:	Garfield County, CO NAD83	MD Reference:	GL 6571.1& RKB 24' @ 6595.10usft (H&P 318)
Site:	PA 44-13 Pad	North Reference:	True
Well:	PA 32-13	Survey Calculation Method:	Minimum Curvature
Wellbore:	OH		
Design:	Plan #2 16May2019 mmsdi		

Planned Survey										
Measured Depth (usft)	Inclination (°)	Azimuth (°)	Vertical Depth (usft)	+N/-S (usft)	+E/-W (usft)	Vertical Section (usft)	Dogleg Rate (°/100usft)	Build Rate (°/100usft)	Turn Rate (°/100usft)	
0.00	0.00	0.00	0.00	0.00	0.00	0.00	0.00	0.00	0.00	
100.00	0.00	0.00	100.00	0.00	0.00	0.00	0.00	0.00	0.00	
120.00	0.00	0.00	120.00	0.00	0.00	0.00	0.00	0.00	0.00	
Start Build 3.50										
200.00	2.80	322.08	199.97	1.54	-1.20	1.95	3.50	3.50	0.00	
300.00	6.30	322.08	299.64	7.80	-6.08	9.89	3.50	3.50	0.00	
400.00	9.80	322.08	398.64	18.84	-14.68	23.89	3.50	3.50	0.00	
500.00	13.30	322.08	496.60	34.64	-26.98	43.91	3.50	3.50	0.00	
600.00	16.80	322.08	593.15	55.12	-42.94	69.87	3.50	3.50	0.00	
700.00	20.30	322.08	687.94	80.21	-62.49	101.68	3.50	3.50	0.00	
800.00	23.80	322.08	780.61	109.82	-85.55	139.21	3.50	3.50	0.00	
900.00	27.30	322.08	870.82	143.84	-112.05	182.34	3.50	3.50	0.00	
1,000.00	30.80	322.08	958.23	182.14	-141.89	230.89	3.50	3.50	0.00	
1,031.28	31.89	322.08	984.94	194.98	-151.89	247.16	3.50	3.50	0.00	
Start 5421.21 hold at 1031.28 MD										
1,100.00	31.89	322.08	1,043.28	223.62	-174.20	283.47	0.00	0.00	0.00	
1,200.00	31.89	322.08	1,128.19	265.30	-206.67	336.30	0.00	0.00	0.00	
1,300.00	31.89	322.08	1,213.09	306.98	-239.14	389.14	0.00	0.00	0.00	
1,400.00	31.89	322.08	1,297.99	348.67	-271.61	441.98	0.00	0.00	0.00	
1,500.00	31.89	322.08	1,382.89	390.35	-304.08	494.81	0.00	0.00	0.00	
1,600.00	31.89	322.08	1,467.79	432.03	-336.55	547.65	0.00	0.00	0.00	
1,700.00	31.89	322.08	1,552.70	473.71	-369.02	600.48	0.00	0.00	0.00	
1,800.00	31.89	322.08	1,637.60	515.39	-401.50	653.32	0.00	0.00	0.00	
1,900.00	31.89	322.08	1,722.50	557.07	-433.97	706.16	0.00	0.00	0.00	
2,000.00	31.89	322.08	1,807.40	598.75	-466.44	758.99	0.00	0.00	0.00	
2,100.00	31.89	322.08	1,892.30	640.44	-498.91	811.83	0.00	0.00	0.00	
2,200.00	31.89	322.08	1,977.21	682.12	-531.38	864.66	0.00	0.00	0.00	
2,300.00	31.89	322.08	2,062.11	723.80	-563.85	917.50	0.00	0.00	0.00	
2,400.00	31.89	322.08	2,147.01	765.48	-596.32	970.34	0.00	0.00	0.00	
2,500.00	31.89	322.08	2,231.91	807.16	-628.79	1,023.17	0.00	0.00	0.00	
2,600.00	31.89	322.08	2,316.81	848.84	-661.26	1,076.01	0.00	0.00	0.00	
2,700.00	31.89	322.08	2,401.72	890.52	-693.73	1,128.84	0.00	0.00	0.00	
2,800.00	31.89	322.08	2,486.62	932.21	-726.20	1,181.68	0.00	0.00	0.00	
2,900.00	31.89	322.08	2,571.52	973.89	-758.67	1,234.52	0.00	0.00	0.00	
3,000.00	31.89	322.08	2,656.42	1,015.57	-791.14	1,287.35	0.00	0.00	0.00	
3,100.00	31.89	322.08	2,741.32	1,057.25	-823.61	1,340.19	0.00	0.00	0.00	
3,200.00	31.89	322.08	2,826.23	1,098.93	-856.08	1,393.02	0.00	0.00	0.00	
3,300.00	31.89	322.08	2,911.13	1,140.61	-888.55	1,445.86	0.00	0.00	0.00	
3,400.00	31.89	322.08	2,996.03	1,182.29	-921.02	1,498.70	0.00	0.00	0.00	
3,500.00	31.89	322.08	3,080.93	1,223.97	-953.49	1,551.53	0.00	0.00	0.00	
3,600.00	31.89	322.08	3,165.83	1,265.66	-985.96	1,604.37	0.00	0.00	0.00	
3,700.00	31.89	322.08	3,250.74	1,307.34	-1,018.43	1,657.21	0.00	0.00	0.00	
3,800.00	31.89	322.08	3,335.64	1,349.02	-1,050.90	1,710.04	0.00	0.00	0.00	
3,900.00	31.89	322.08	3,420.54	1,390.70	-1,083.37	1,762.88	0.00	0.00	0.00	
3,902.90	31.89	322.08	3,423.00	1,391.91	-1,084.31	1,764.41	0.00	0.00	0.00	
G Sand										
4,000.00	31.89	322.08	3,505.44	1,432.38	-1,115.84	1,815.71	0.00	0.00	0.00	
4,007.72	31.89	322.08	3,512.00	1,435.60	-1,118.35	1,819.79	0.00	0.00	0.00	
G Sand Base										
4,100.00	31.89	322.08	3,590.34	1,474.06	-1,148.31	1,868.55	0.00	0.00	0.00	
4,200.00	31.89	322.08	3,675.25	1,515.74	-1,180.78	1,921.39	0.00	0.00	0.00	
4,300.00	31.89	322.08	3,760.15	1,557.43	-1,213.25	1,974.22	0.00	0.00	0.00	

Database:	Grand Junction District	Local Co-ordinate Reference:	Well PA 32-13 - Slot PA 32-13 (B11)
Company:	TEP Rocky Mountain LLC	TVD Reference:	GL 6571.1& RKB 24' @ 6595.10usft (H&P 318)
Project:	Garfield County, CO NAD83	MD Reference:	GL 6571.1& RKB 24' @ 6595.10usft (H&P 318)
Site:	PA 44-13 Pad	North Reference:	True
Well:	PA 32-13	Survey Calculation Method:	Minimum Curvature
Wellbore:	OH		
Design:	Plan #2 16May2019 mmsdi		

Planned Survey									
Measured Depth (usft)	Inclination (°)	Azimuth (°)	Vertical Depth (usft)	+N/-S (usft)	+E/-W (usft)	Vertical Section (usft)	Dogleg Rate (°/100usft)	Build Rate (°/100usft)	Turn Rate (°/100usft)
4,400.00	31.89	322.08	3,845.05	1,599.11	-1,245.72	2,027.06	0.00	0.00	0.00
4,500.00	31.89	322.08	3,929.95	1,640.79	-1,278.19	2,079.89	0.00	0.00	0.00
4,600.00	31.89	322.08	4,014.85	1,682.47	-1,310.66	2,132.73	0.00	0.00	0.00
4,700.00	31.89	322.08	4,099.76	1,724.15	-1,343.13	2,185.57	0.00	0.00	0.00
4,800.00	31.89	322.08	4,184.66	1,765.83	-1,375.60	2,238.40	0.00	0.00	0.00
4,900.00	31.89	322.08	4,269.56	1,807.51	-1,408.07	2,291.24	0.00	0.00	0.00
5,000.00	31.89	322.08	4,354.46	1,849.20	-1,440.54	2,344.07	0.00	0.00	0.00
5,100.00	31.89	322.08	4,439.36	1,890.88	-1,473.01	2,396.91	0.00	0.00	0.00
5,200.00	31.89	322.08	4,524.27	1,932.56	-1,505.48	2,449.75	0.00	0.00	0.00
5,300.00	31.89	322.08	4,609.17	1,974.24	-1,537.95	2,502.58	0.00	0.00	0.00
5,400.00	31.89	322.08	4,694.07	2,015.92	-1,570.42	2,555.42	0.00	0.00	0.00
5,500.00	31.89	322.08	4,778.97	2,057.60	-1,602.89	2,608.25	0.00	0.00	0.00
5,600.00	31.89	322.08	4,863.87	2,099.28	-1,635.36	2,661.09	0.00	0.00	0.00
5,700.00	31.89	322.08	4,948.78	2,140.96	-1,667.83	2,713.93	0.00	0.00	0.00
5,800.00	31.89	322.08	5,033.68	2,182.65	-1,700.30	2,766.76	0.00	0.00	0.00
5,900.00	31.89	322.08	5,118.58	2,224.33	-1,732.77	2,819.60	0.00	0.00	0.00
6,000.00	31.89	322.08	5,203.48	2,266.01	-1,765.24	2,872.43	0.00	0.00	0.00
6,100.00	31.89	322.08	5,288.38	2,307.69	-1,797.71	2,925.27	0.00	0.00	0.00
6,200.00	31.89	322.08	5,373.29	2,349.37	-1,830.18	2,978.11	0.00	0.00	0.00
6,300.00	31.89	322.08	5,458.19	2,391.05	-1,862.65	3,030.94	0.00	0.00	0.00
6,400.00	31.89	322.08	5,543.09	2,432.73	-1,895.12	3,083.78	0.00	0.00	0.00
6,452.49	31.89	322.08	5,587.66	2,454.61	-1,912.17	3,111.51	0.00	0.00	0.00
Start Drop -1.75									
6,500.00	31.06	322.08	5,628.17	2,474.18	-1,927.41	3,136.32	1.75	-1.75	0.00
6,600.00	29.31	322.08	5,714.61	2,513.85	-1,958.32	3,186.60	1.75	-1.75	0.00
6,625.63	28.86	322.08	5,737.00	2,523.68	-1,965.97	3,199.06	1.75	-1.75	0.00
WFRK UMVRD									
6,700.00	27.56	322.08	5,802.54	2,551.42	-1,987.58	3,234.22	1.75	-1.75	0.00
6,770.07	26.34	322.08	5,865.00	2,576.47	-2,007.10	3,265.98	1.75	-1.75	0.00
OCRK - MVRD									
6,800.00	25.81	322.08	5,891.88	2,586.85	-2,015.18	3,279.14	1.75	-1.75	0.00
6,900.00	24.06	322.08	5,982.55	2,620.11	-2,041.09	3,321.30	1.75	-1.75	0.00
7,000.00	22.31	322.08	6,074.47	2,651.17	-2,065.29	3,360.67	1.75	-1.75	0.00
7,100.00	20.56	322.08	6,167.55	2,680.00	-2,087.75	3,397.22	1.75	-1.75	0.00
7,200.00	18.81	322.08	6,261.70	2,706.58	-2,108.45	3,430.91	1.75	-1.75	0.00
7,300.00	17.06	322.08	6,356.83	2,730.88	-2,127.38	3,461.71	1.75	-1.75	0.00
7,400.00	15.31	322.08	6,452.86	2,752.87	-2,144.51	3,489.59	1.75	-1.75	0.00
7,500.00	13.56	322.08	6,549.70	2,772.54	-2,159.83	3,514.52	1.75	-1.75	0.00
7,600.00	11.81	322.08	6,647.26	2,789.86	-2,173.33	3,536.48	1.75	-1.75	0.00
7,700.00	10.06	322.08	6,745.44	2,804.83	-2,184.99	3,555.46	1.75	-1.75	0.00
7,703.62	10.00	322.08	6,749.00	2,805.33	-2,185.38	3,556.09	1.75	-1.75	0.00
Start DLS 1.75 TFO 180.00 - KMGAS									
7,711.54	9.86	322.08	6,756.80	2,806.41	-2,186.22	3,557.45	1.75	-1.75	0.00
PA 32-13 KMV									
7,800.00	8.31	322.08	6,844.15	2,817.43	-2,194.81	3,571.42	1.75	-1.75	0.00
7,900.00	6.56	322.08	6,943.30	2,827.64	-2,202.76	3,584.37	1.75	-1.75	0.00
8,000.00	4.81	322.08	7,042.81	2,835.46	-2,208.85	3,594.28	1.75	-1.75	0.00
8,100.00	3.06	322.08	7,142.57	2,840.88	-2,213.07	3,601.15	1.75	-1.75	0.00
8,200.00	1.31	322.08	7,242.49	2,843.89	-2,215.42	3,604.97	1.75	-1.75	0.00
8,275.05	0.00	0.00	7,317.53	2,844.57	-2,215.95	3,605.83	1.75	-1.75	0.00
Start 2178.47 hold at 8275.05 MD									

Database:	Grand Junction District	Local Co-ordinate Reference:	Well PA 32-13 - Slot PA 32-13 (B11)
Company:	TEP Rocky Mountain LLC	TVD Reference:	GL 6571.1& RKB 24' @ 6595.10usft (H&P 318)
Project:	Garfield County, CO NAD83	MD Reference:	GL 6571.1& RKB 24' @ 6595.10usft (H&P 318)
Site:	PA 44-13 Pad	North Reference:	True
Well:	PA 32-13	Survey Calculation Method:	Minimum Curvature
Wellbore:	OH		
Design:	Plan #2 16May2019 mmsdi		

Planned Survey										
Measured Depth (usft)	Inclination (°)	Azimuth (°)	Vertical Depth (usft)	+N/-S (usft)	+E/-W (usft)	Vertical Section (usft)	Dogleg Rate (°/100usft)	Build Rate (°/100usft)	Turn Rate (°/100usft)	
8,300.00	0.00	0.00	7,342.48	2,844.57	-2,215.95	3,605.83	0.00	0.00	0.00	
8,400.00	0.00	0.00	7,442.48	2,844.57	-2,215.95	3,605.83	0.00	0.00	0.00	
8,500.00	0.00	0.00	7,542.48	2,844.57	-2,215.95	3,605.83	0.00	0.00	0.00	
8,600.00	0.00	0.00	7,642.48	2,844.57	-2,215.95	3,605.83	0.00	0.00	0.00	
8,700.00	0.00	0.00	7,742.48	2,844.57	-2,215.95	3,605.83	0.00	0.00	0.00	
8,800.00	0.00	0.00	7,842.48	2,844.57	-2,215.95	3,605.83	0.00	0.00	0.00	
8,900.00	0.00	0.00	7,942.48	2,844.57	-2,215.95	3,605.83	0.00	0.00	0.00	
9,000.00	0.00	0.00	8,042.48	2,844.57	-2,215.95	3,605.83	0.00	0.00	0.00	
9,100.00	0.00	0.00	8,142.48	2,844.57	-2,215.95	3,605.83	0.00	0.00	0.00	
9,200.00	0.00	0.00	8,242.48	2,844.57	-2,215.95	3,605.83	0.00	0.00	0.00	
9,300.00	0.00	0.00	8,342.48	2,844.57	-2,215.95	3,605.83	0.00	0.00	0.00	
9,400.00	0.00	0.00	8,442.48	2,844.57	-2,215.95	3,605.83	0.00	0.00	0.00	
9,500.00	0.00	0.00	8,542.48	2,844.57	-2,215.95	3,605.83	0.00	0.00	0.00	
9,600.00	0.00	0.00	8,642.48	2,844.57	-2,215.95	3,605.83	0.00	0.00	0.00	
9,700.00	0.00	0.00	8,742.48	2,844.57	-2,215.95	3,605.83	0.00	0.00	0.00	
9,800.00	0.00	0.00	8,842.48	2,844.57	-2,215.95	3,605.83	0.00	0.00	0.00	
9,848.52	0.00	0.00	8,891.00	2,844.57	-2,215.95	3,605.83	0.00	0.00	0.00	
CMEO										
9,900.00	0.00	0.00	8,942.48	2,844.57	-2,215.95	3,605.83	0.00	0.00	0.00	
10,000.00	0.00	0.00	9,042.48	2,844.57	-2,215.95	3,605.83	0.00	0.00	0.00	
10,100.00	0.00	0.00	9,142.48	2,844.57	-2,215.95	3,605.83	0.00	0.00	0.00	
10,200.00	0.00	0.00	9,242.48	2,844.57	-2,215.95	3,605.83	0.00	0.00	0.00	
10,300.00	0.00	0.00	9,342.48	2,844.57	-2,215.95	3,605.83	0.00	0.00	0.00	
10,328.52	0.00	0.00	9,371.00	2,844.57	-2,215.95	3,605.83	0.00	0.00	0.00	
RLNS										
10,400.00	0.00	0.00	9,442.48	2,844.57	-2,215.95	3,605.83	0.00	0.00	0.00	
10,453.52	0.00	0.00	9,496.00	2,844.57	-2,215.95	3,605.83	0.00	0.00	0.00	
TD at 10453.52 - TD - PA 32-13 PBHL										

Design Targets										
Target Name	Dip Angle (°)	Dip Dir. (°)	TVD (usft)	+N/-S (usft)	+E/-W (usft)	Northing (usft)	Easting (usft)	Latitude	Longitude	
PA 32-13 KMV	0.00	0.00	6,749.00	2,844.57	-2,215.95	1,626,714.20	2,309,085.20	39.5285369	-107.9497412	
- hit/miss target										
- Shape										
- plan misses target center by 49.00usft at 7711.54usft MD (6756.80 TVD, 2806.41 N, -2186.22 E)										
- Circle (radius 50.00)										
PA 32-13 PBHL	0.00	0.00	9,496.00	2,844.57	-2,215.95	1,626,714.20	2,309,085.20	39.5285369	-107.9497412	
- plan hits target center										
- Point										

Database:	Grand Junction District	Local Co-ordinate Reference:	Well PA 32-13 - Slot PA 32-13 (B11)
Company:	TEP Rocky Mountain LLC	TVD Reference:	GL 6571.1& RKB 24' @ 6595.10usft (H&P 318)
Project:	Garfield County, CO NAD83	MD Reference:	GL 6571.1& RKB 24' @ 6595.10usft (H&P 318)
Site:	PA 44-13 Pad	North Reference:	True
Well:	PA 32-13	Survey Calculation Method:	Minimum Curvature
Wellbore:	OH		
Design:	Plan #2 16May2019 mmsdi		

Formations					
Measured Depth (usft)	Vertical Depth (usft)	Name	Lithology	Dip (°)	Dip Direction (°)
3,902.90	3,423.00	G Sand		0.00	0.00
4,007.72	3,512.00	G Sand Base		0.00	0.00
6,625.63	5,737.00	WFRK UMVRD		0.00	0.00
6,770.07	5,865.00	OCRK		0.00	0.00
6,770.07	5,865.00	MVRD		0.00	0.00
7,703.62	6,749.00	KMVGAS		0.00	0.00
9,848.52	8,891.00	CMEO		0.00	0.00
10,328.52	9,371.00	RLNS		0.00	0.00
10,453.52	9,496.00	TD		0.00	0.00

Plan Annotations				
Measured Depth (usft)	Vertical Depth (usft)	Local Coordinates		Comment
		+N/-S (usft)	+E/-W (usft)	
120.00	120.00	0.00	0.00	Start Build 3.50
1,031.28	984.94	194.98	-151.89	Start 5421.21 hold at 1031.28 MD
6,452.49	5,587.66	2,454.61	-1,912.17	Start Drop -1.75
7,703.62	6,749.00	2,805.33	-2,185.38	Start DLS 1.75 TFO 180.00
8,275.05	7,317.53	2,844.57	-2,215.95	Start 2178.47 hold at 8275.05 MD
10,453.52	9,496.00	2,844.57	-2,215.95	TD at 10453.52