



RADIAL CEMENT
BOND LOG

| | | | | | | | |
|------------------------|-------|--|--------|------|--------|------|--------|
| Company | | ANADARKO PETROLEUM CORP. | | | | | |
| Well | | Koch Kenneth E A-1 | | | | | |
| Field | | WATTENBERG | | | | | |
| County | | WELD | | | | | |
| State | | COLORADO | | | | | |
| Location: | | API # : 05-123-12456 | | | | | |
| SEC 6 TWP 1N RGE 68w | | SW SE | | | | | |
| Permanent Datum | | GROUND LEVEL Elevation 5000' | | | | | |
| Log Measured From | | KELLY BUSHING = 11' | | | | | |
| Drilling Measured From | | KELLY BUSHING | | | | | |
| Other Services | | NONE | | | | | |
| Elevation | | K.B. 5011' D.F. 5011' G.L. 5000' | | | | | |
| Date | | 24 JUNE 2019 | | | | | |
| Run Number | | ONE | | | | | |
| Depth Driller | | 8358' | | | | | |
| Depth Logger | | 2000' | | | | | |
| Bottom Logged Interval | | 2000' | | | | | |
| Top Log Interval | | SURFACE | | | | | |
| Open Hole Size | | 7.875" | | | | | |
| Type Fluid | | WATER | | | | | |
| Density / Viscosity | | ~8.3# | | | | | |
| Max. Recorded Temp. | | | | | | | |
| Estimated Cement Top | | NA | | | | | |
| Time Well Ready | | ROA | | | | | |
| Time Logger on Bottom | | 0815 | | | | | |
| Equipment Number | | W-060 | | | | | |
| Location | | WINDSOR, CO | | | | | |
| Recorded By | | T. HAWLEY | | | | | |
| Witnessed By | | S. CHAPPELL | | | | | |
| Borehole Record | | Tubing Record | | | | | |
| Run Number | Bit | From | To | Size | Weight | From | To |
| | | | | | | | |
| | | | | | | | |
| | | | | | | | |
| Casing Record | Size | | Wgt/Ft | | Top | | Bottom |
| Surface String | 8.63" | | 24# | | 0' | | 690' |
| Prot. String | | | | | | | |
| Production String | 5.5" | | 17# | | 0' | | 8355" |
| Liner | | | | | | | |

<<< Fold Here >>>

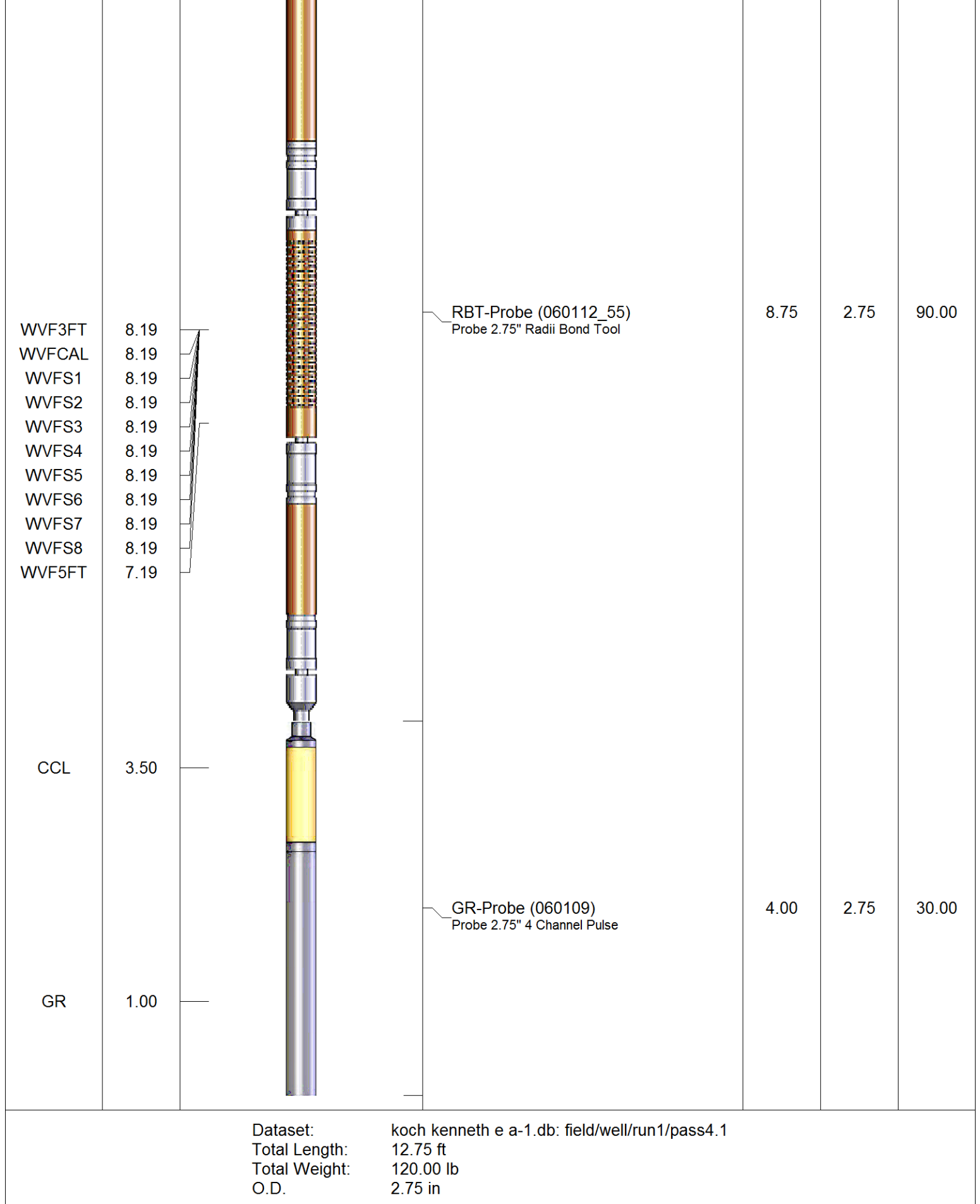
All interpretations are opinions based on inferences from electrical or other measurements and we cannot and do not guarantee the accuracy or correctness of any interpretation, and we shall not, except in the case of gross or willful negligence on our part, be liable or responsible for any loss, costs, damages, or expenses incurred or sustained by anyone resulting from any interpretation made by any of our officers, agents or employees. These interpretations are also subject to our general terms and conditions set out in our current Price Schedule.

Comments

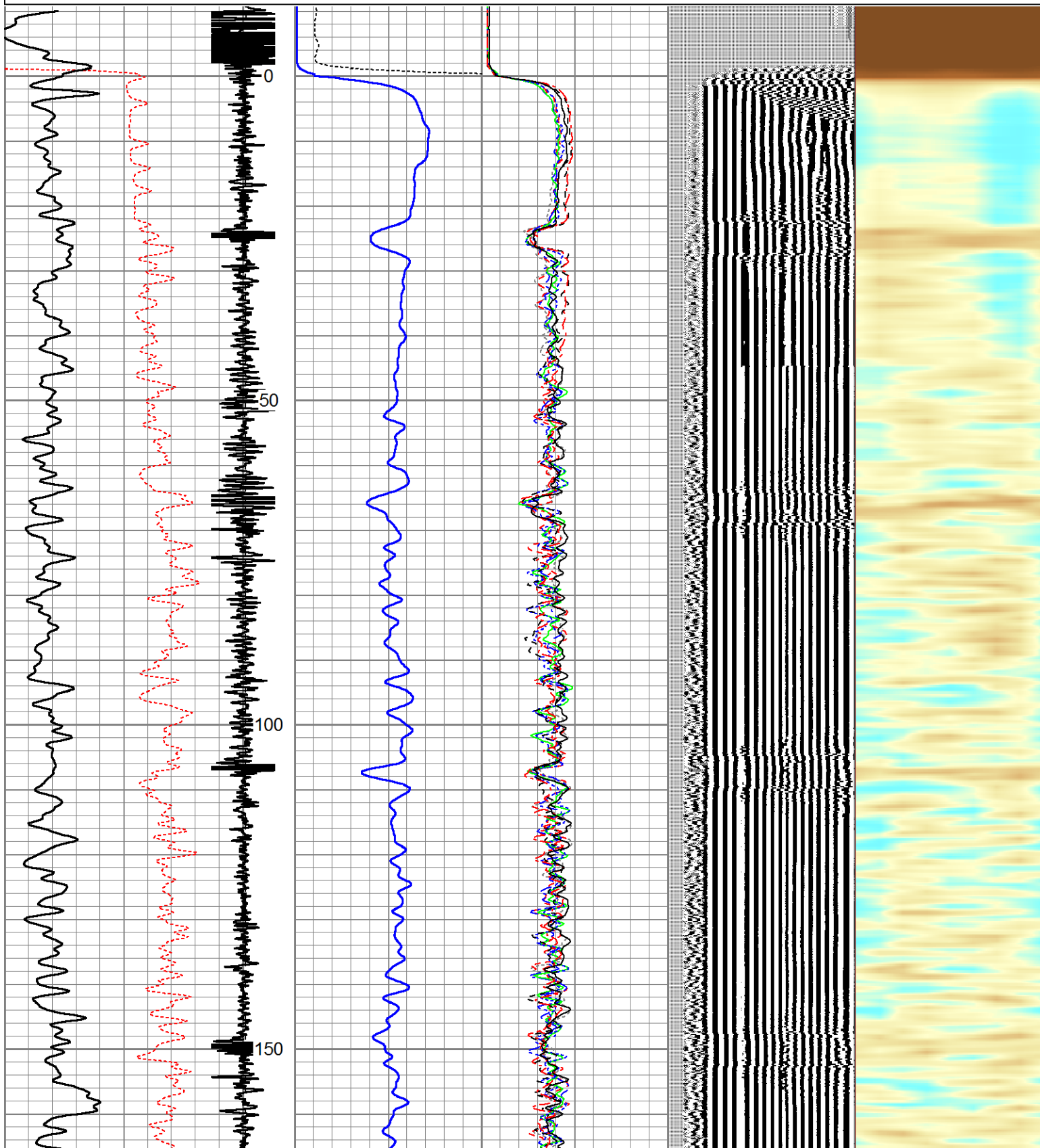
THANK YOU FOR USING CUTTERS WIRELINE

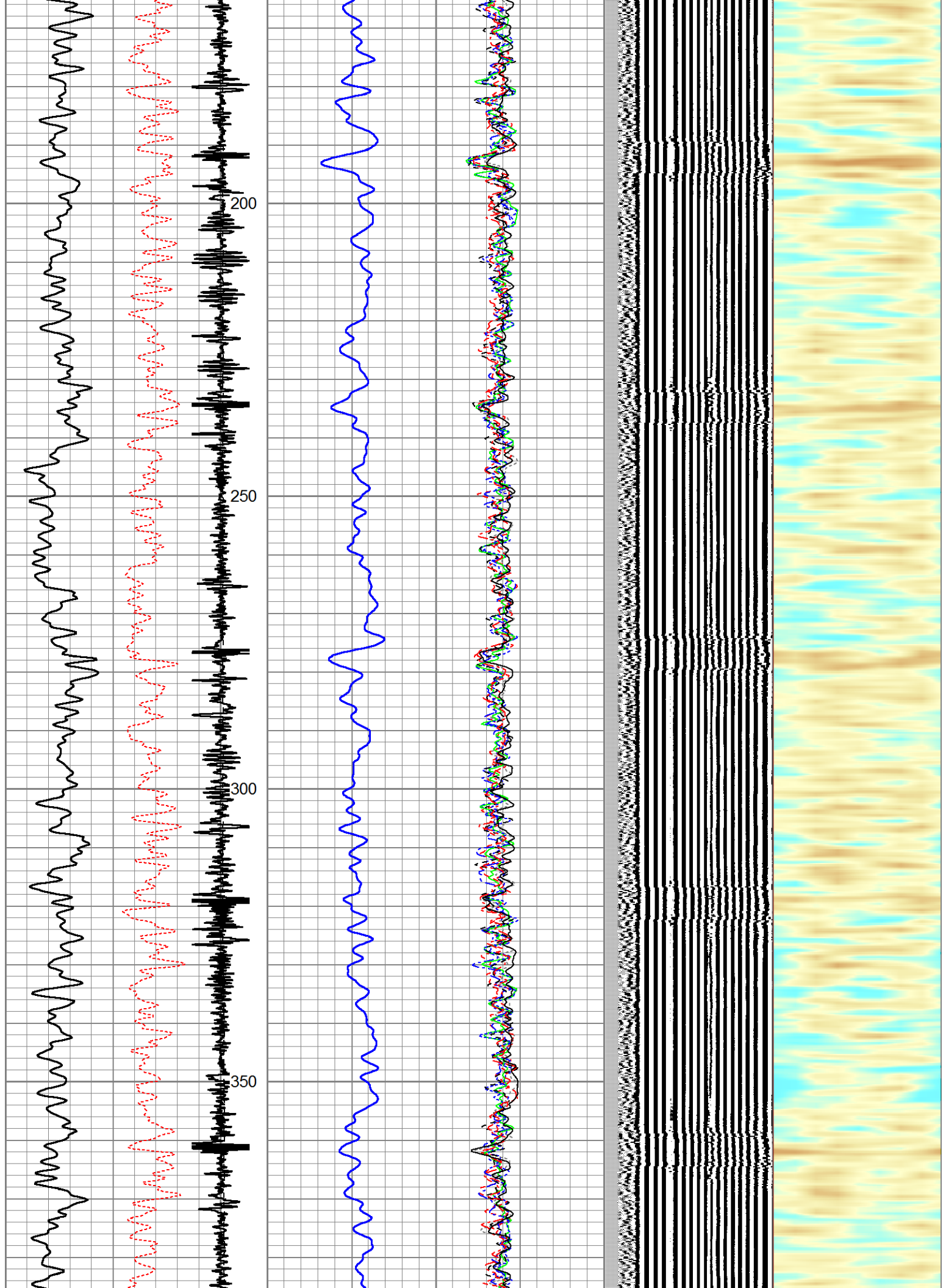
DATE OF SHOP CALIBRATION: 10/18
LOG RAN UNDER 500PSI
FREE PIPE CALIBRATION @ 140'

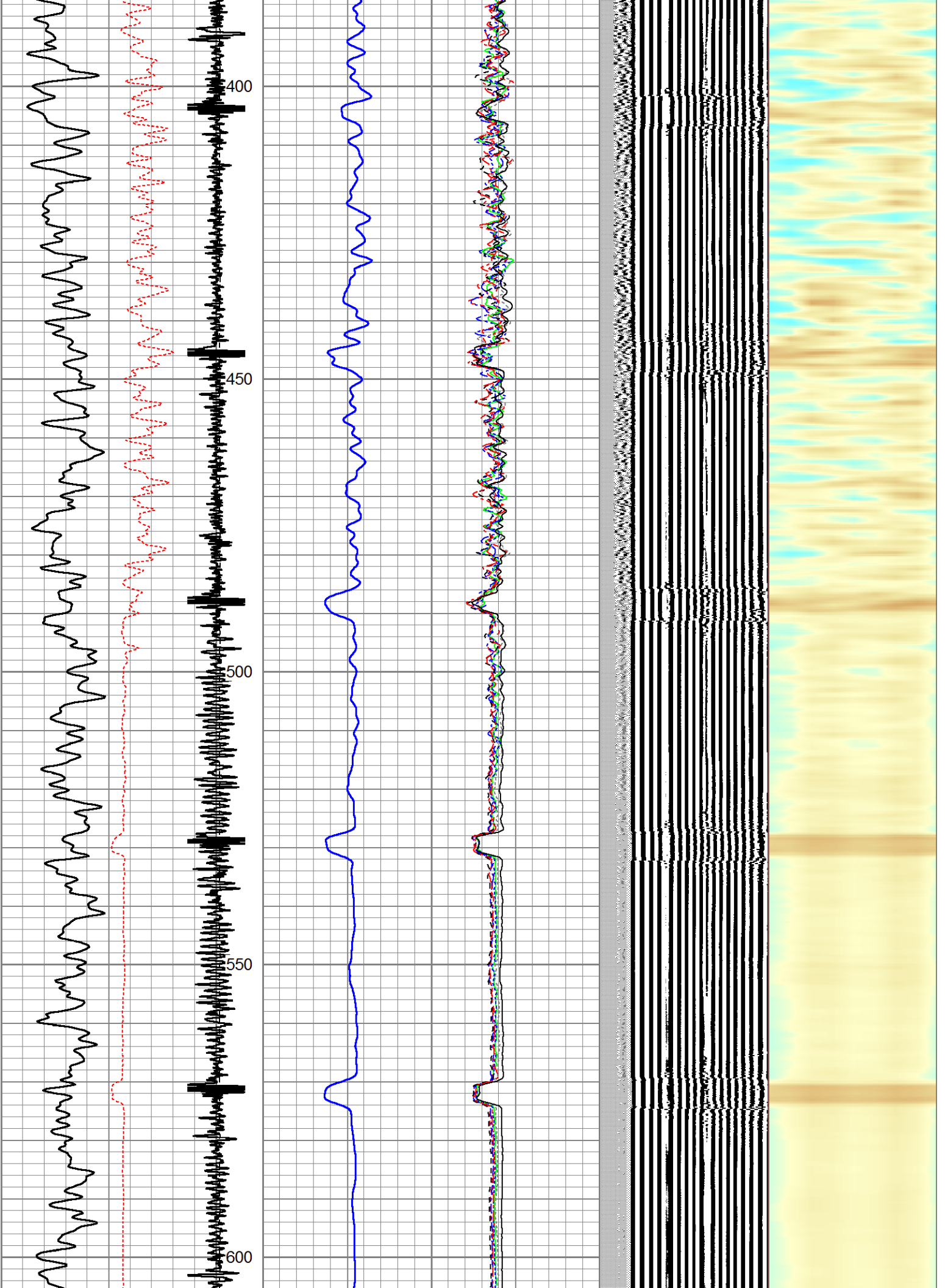
| Sensor | Offset (ft) | Schematic | Description | Len (ft) | OD (in) | Wt (lb) |
|--------|-------------|-----------|-------------|----------|---------|---------|
| | | | | | | |

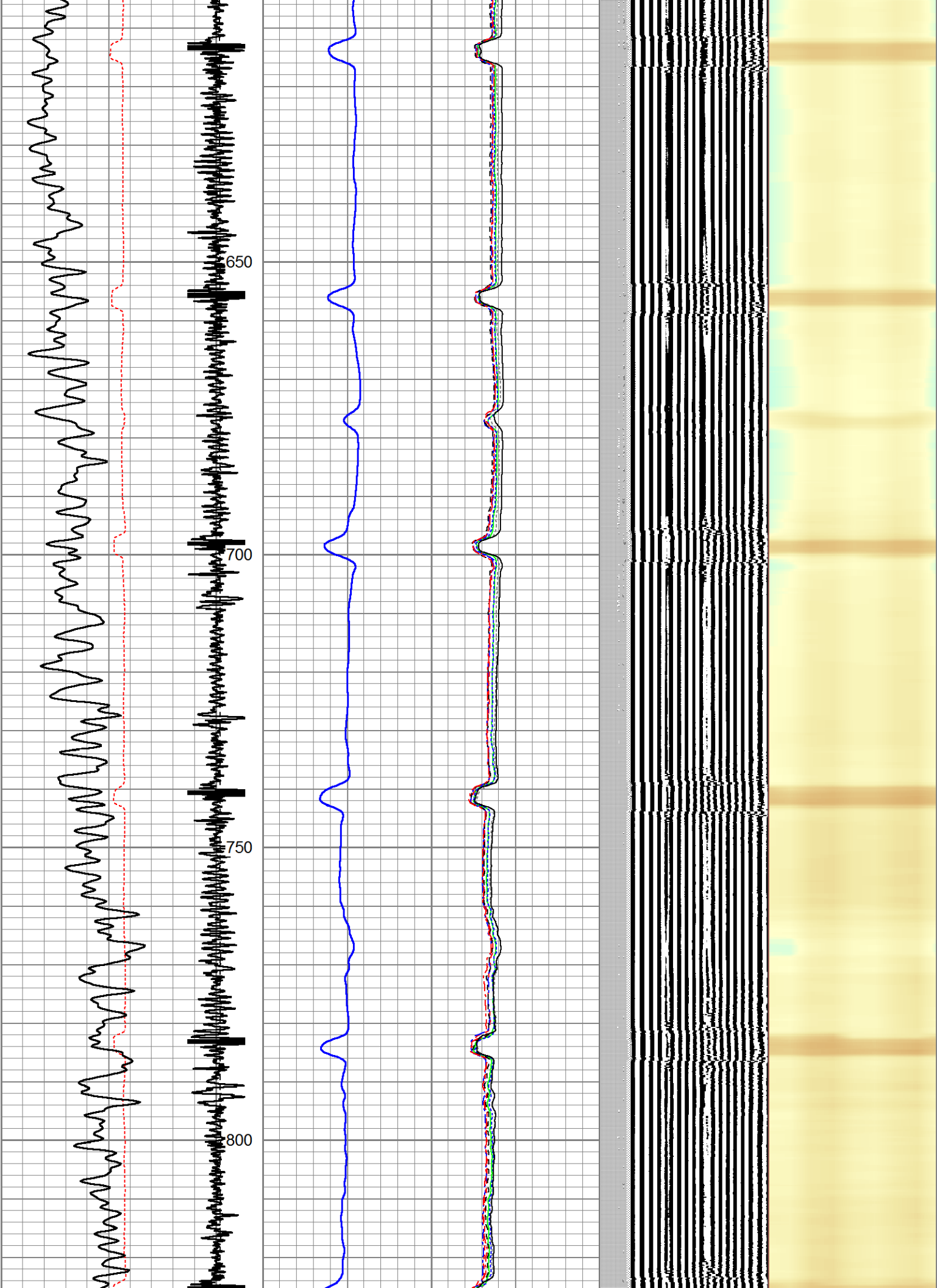


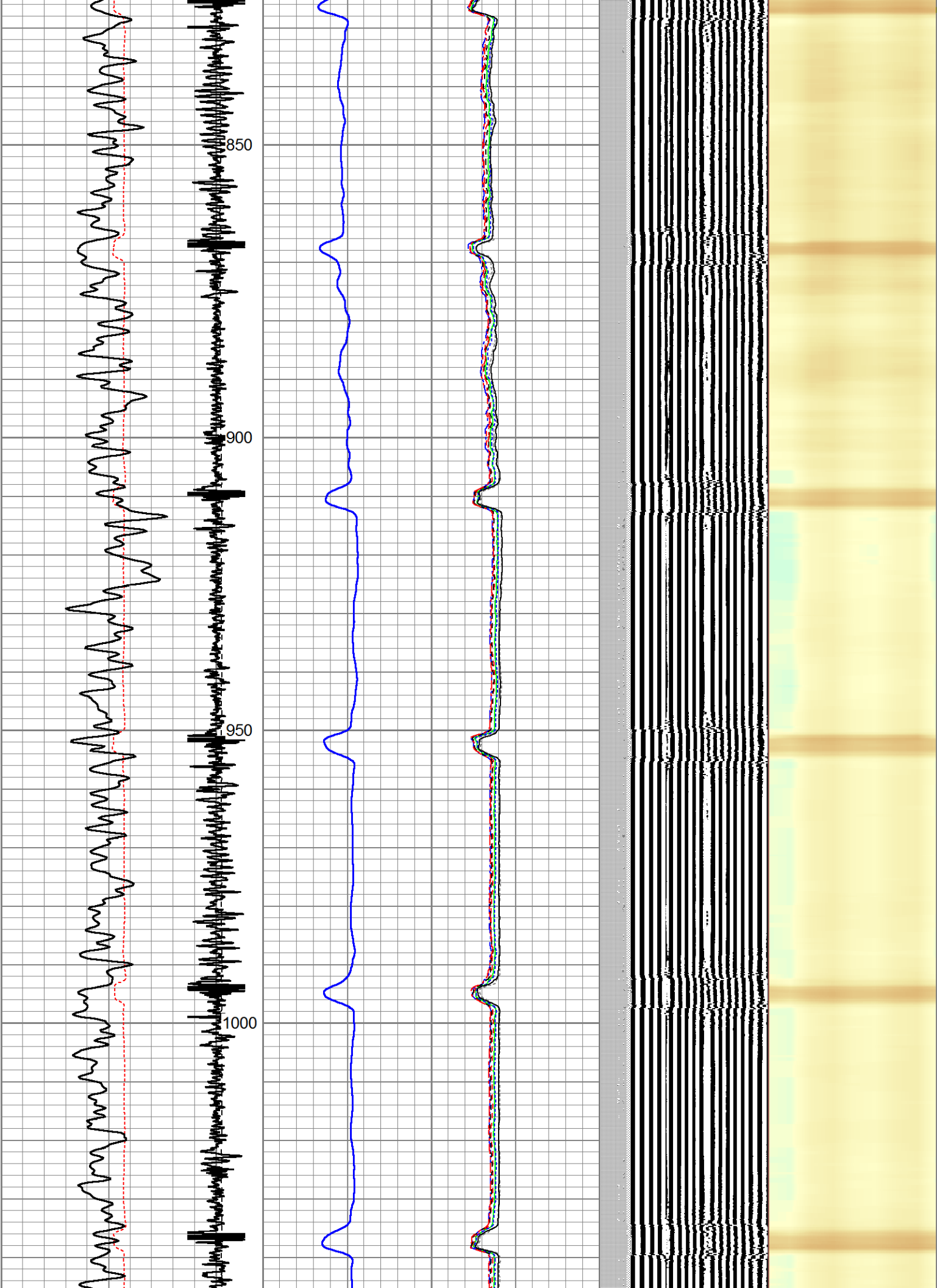
| | | | | | | | | | | | | | | | |
|-----|-----------|-----|------|-----|---------------------|-----|----|-------|-----|-----|-----|------|------------|---|-----|
| 325 | TT (usec) | 225 | LTEN | 0 | Amplitude (mV) | 100 | -5 | AMPS2 | 150 | 200 | VDL | 1200 | Cement Map | 1 | 100 |
| 0 | GR (GAPI) | 200 | (lb) | 0 | Amplified Amplitude | 10 | -5 | AMPS3 | 150 | | | | | | |
| | | | CCL | 000 | (mV) | 10 | -5 | AMPS4 | 150 | | | | | | |
| | | | | | | | -5 | AMPS5 | 150 | | | | | | |
| | | | | | | | -5 | AMPS6 | 150 | | | | | | |
| | | | | | | | -5 | AMPS7 | 150 | | | | | | |
| | | | | | | | -5 | AMPS8 | 150 | | | | | | |
| | | | | | | | -5 | AMPS1 | 150 | | | | | | |

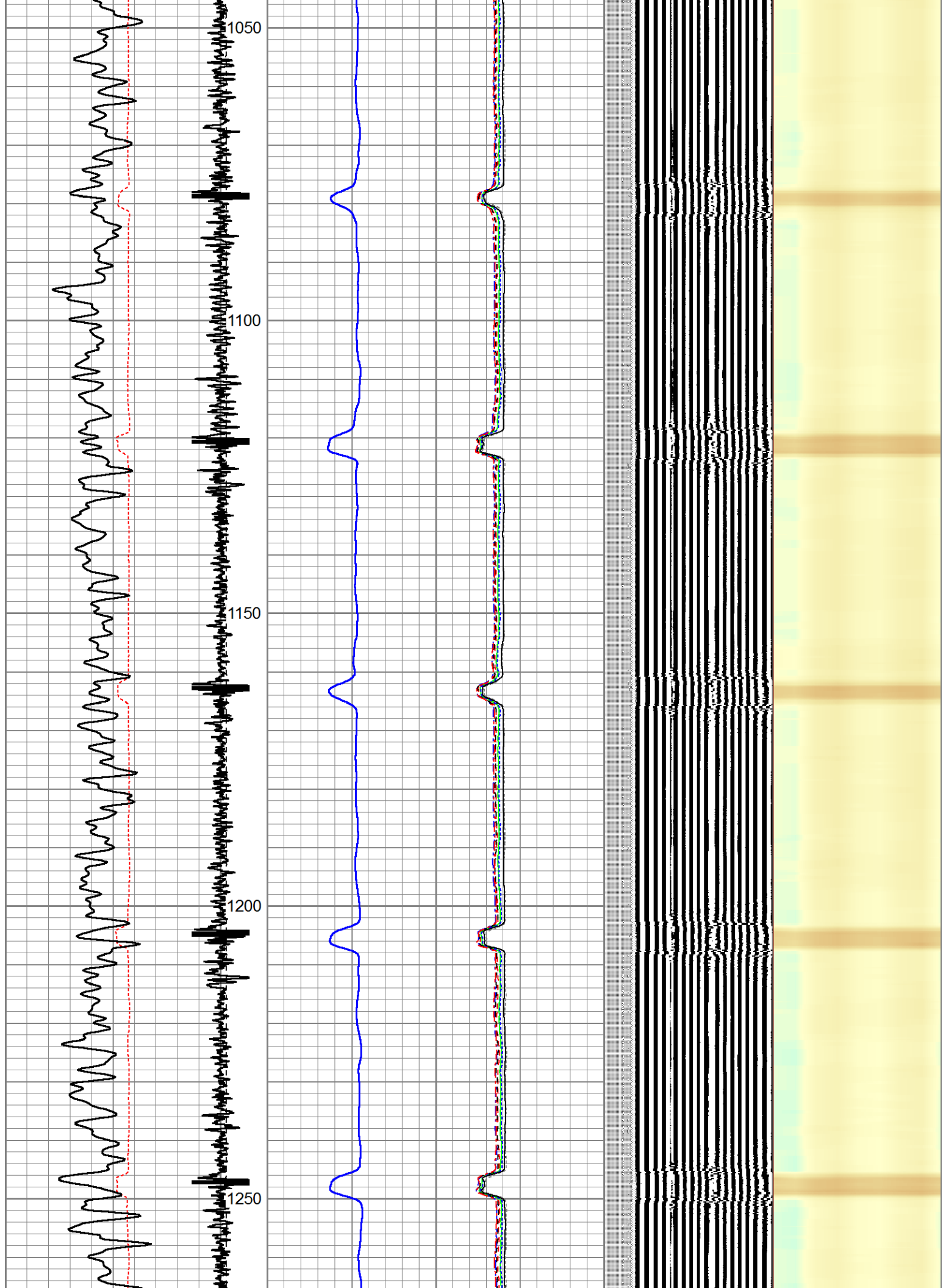


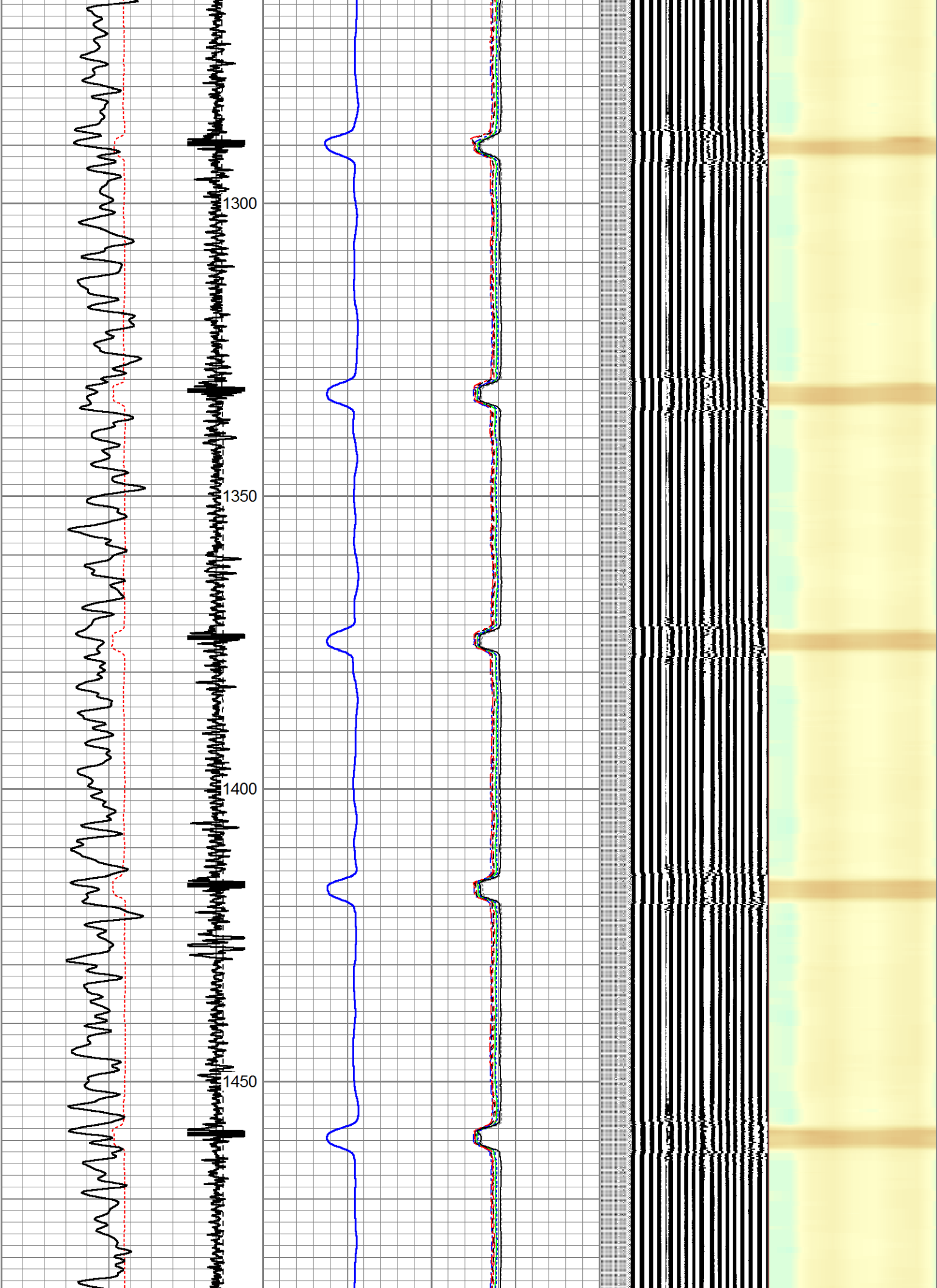


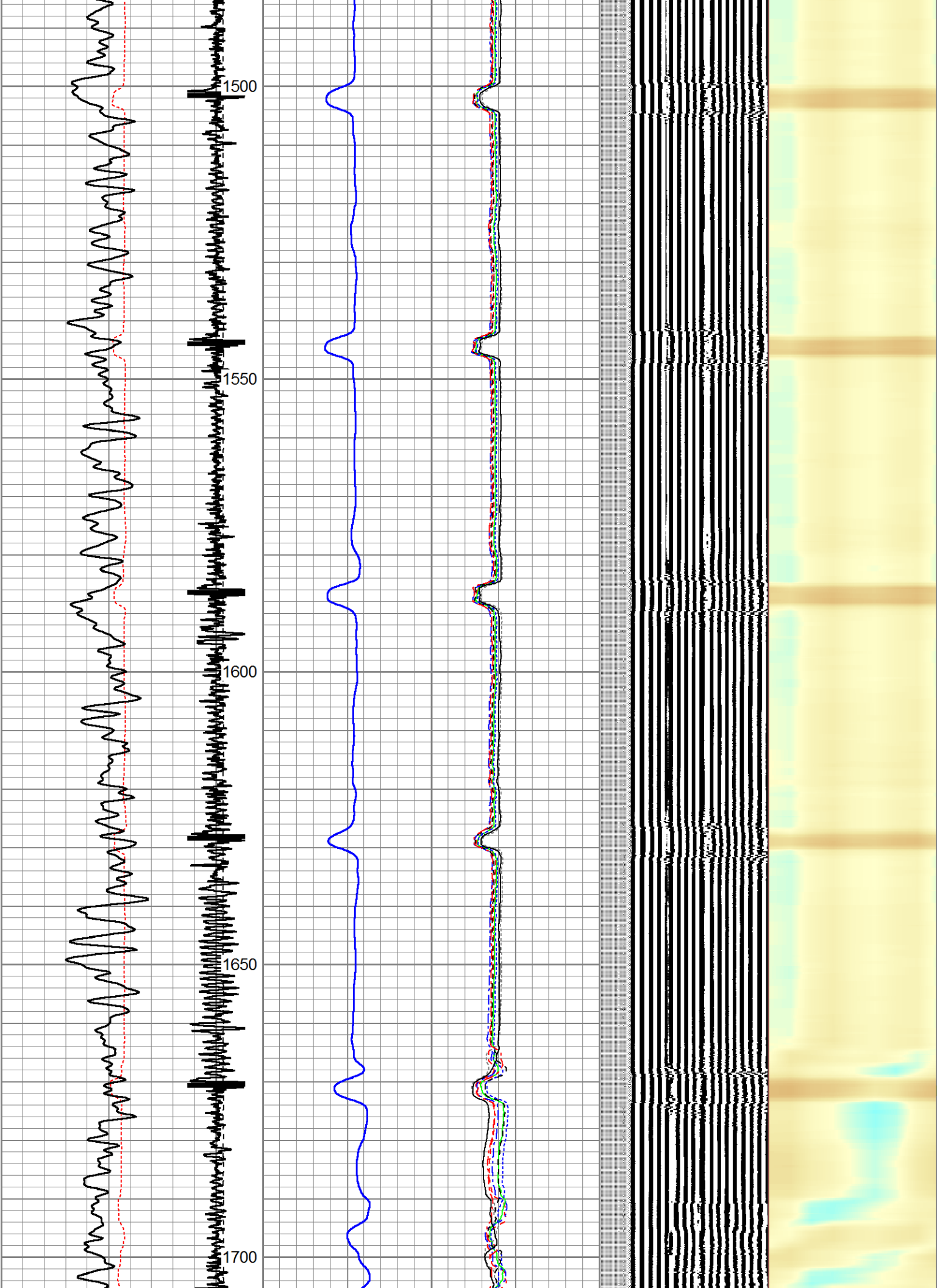


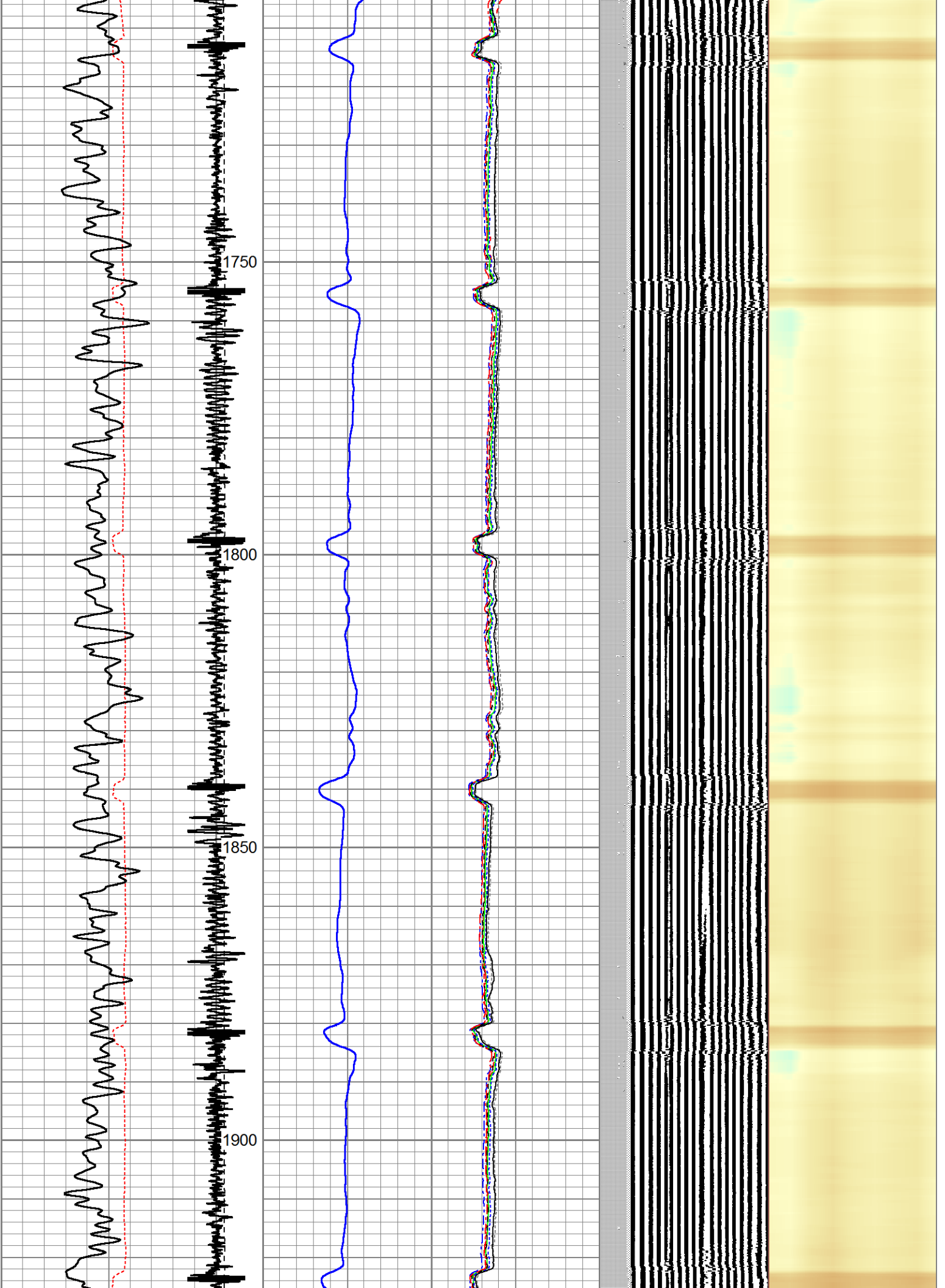


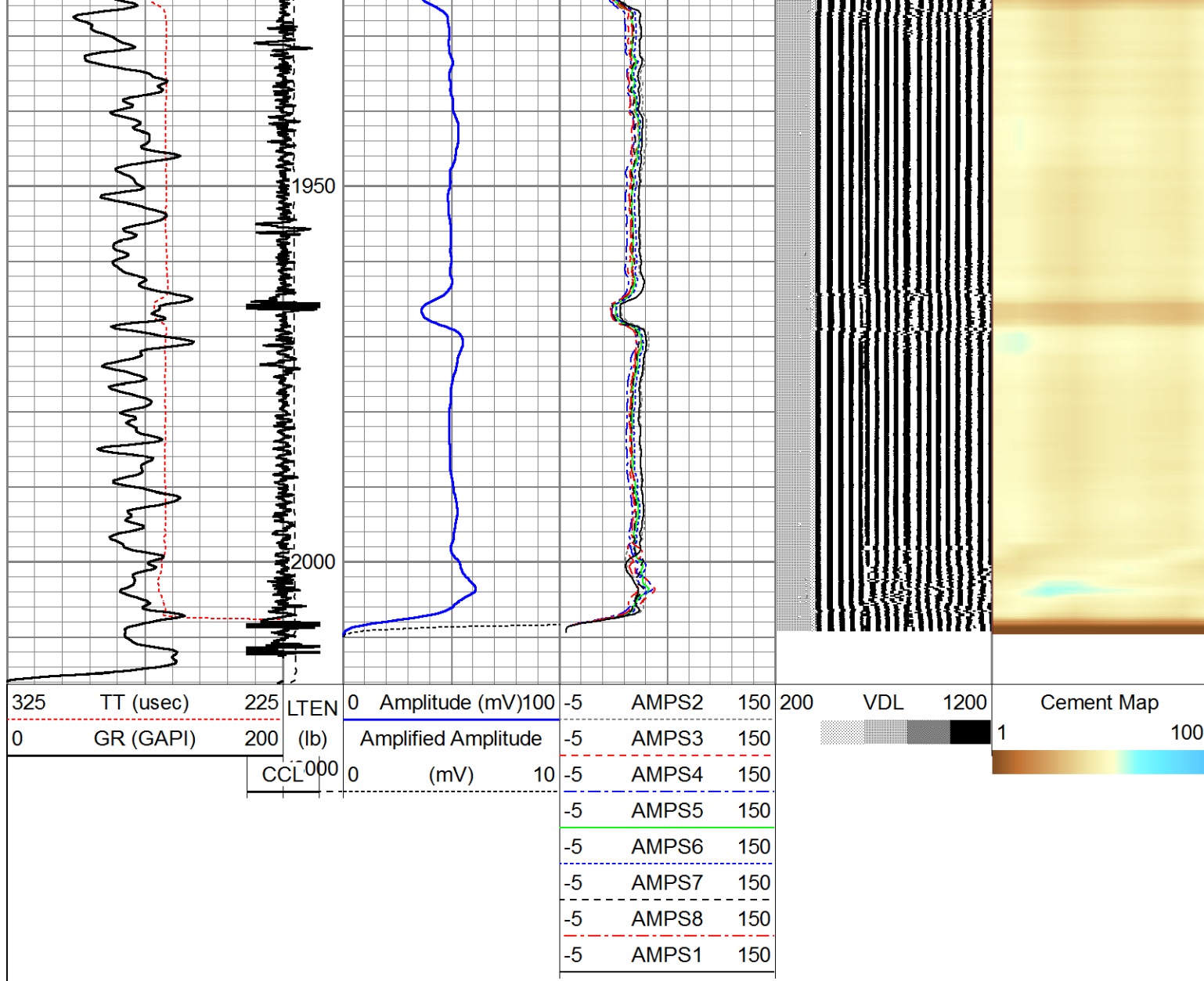












Company ANADARKO PETROLEUM CORP.
 Well Koch Kenneth E A-1
 Field WATTENBERG
 County WELD
 State COLORADO