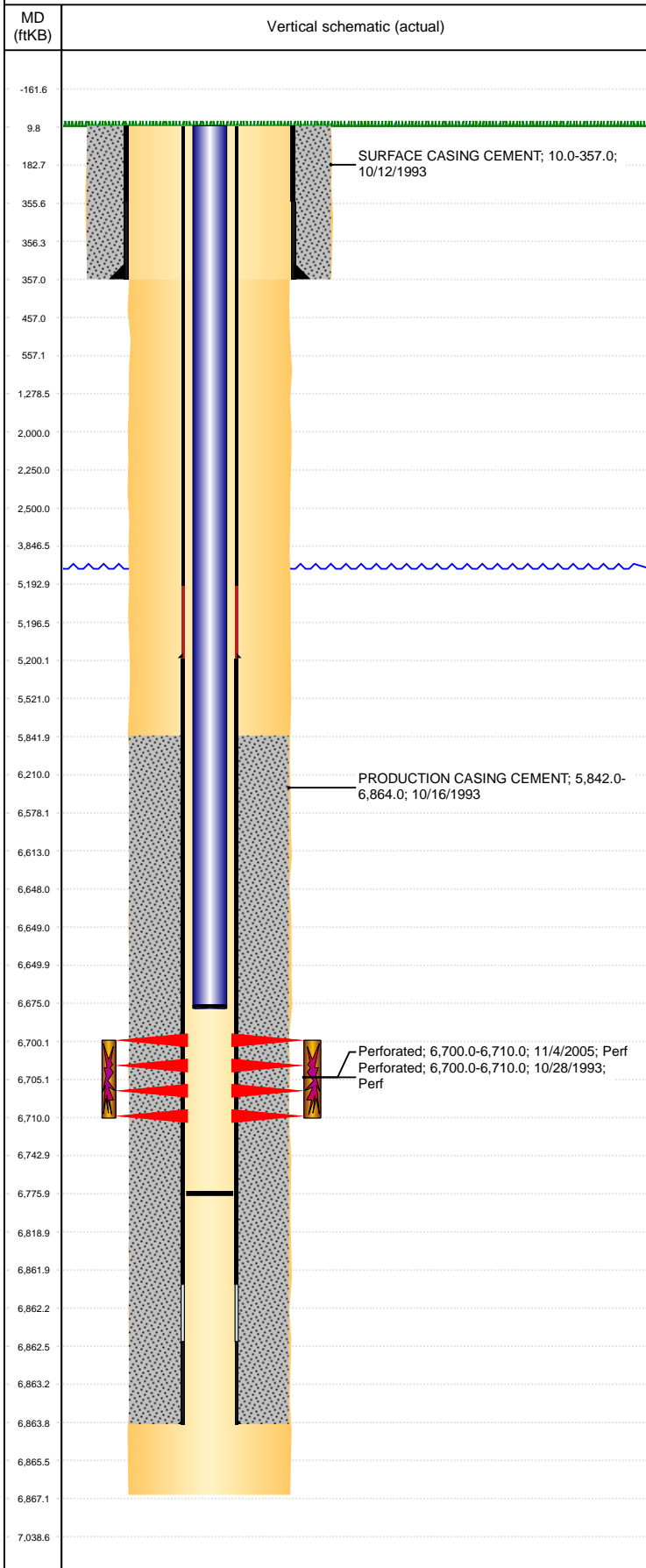


Well Name: BAKER STATE B36-13

VERTICAL, ORIGINAL HOLE, 6/19/2019 1:48:35 PM



Well Header									
API 05-123-17431		Business Unit DJ BASIN			District 15		Well Config VERTICAL		
KB - GL / MSL (ft... 10.00		Spud Date 10/11/1993		P & A Date		Well Production Status PR			SoRT No
Comment RPR CSG 11/98, PATCH @5200'									
Surface Location (Congressional)									
Qtr 3 SW	Qtr 4 SW	Section 36	Twnshp 5	Twنش... N	Range 64	Rng E... W	Actual Latitude (°) 40.35046471	Actual Longitude (°) -104.50525017	
Wellbore Sections									
Section Des			Size (in)			Act Top, MD (ftKB)		Act Btm, MD (ftKB)	
SURFACE			12 1/4			10		357	
PRODUCTION			7 7/8			357		6,867	
Casing Strings									
Csg Des			Run Date		OD (in)	Wt/Len (lb/ft)	Grade	Top, MD (ftKB)	MD (ftKB)
Surface			10/12/1993		8 5/8	24.00	?	10.0	357.0
Production			12/2/1998		2 7/8			10.0	5,200.0
Production			10/16/1993		2 7/8	6.50	N-80	10.0	6,864.0
Cement									
Des					Start Date		Top (ftKB)		Btm (ftKB)
SURFACE CASING CEMENT					10/12/1993		10.0		357.0
PRODUCTION CASING CEMENT					10/16/1993		5,842.0		6,864.0
Zone Statuses									
Zone Name		Status Date		Status	Fluid Type		Job		Prod Method
CODELL		9/30/2015		PR					
CODELL		5/12/2016		PR					
Perforation Data									
Linked Zone			Bnch/Stg	Entered Shot Total		Top (ftKB)		Btm (ftKB)	Date
CODELL, ORIGINAL HOLE				39		6,700.00		6,710.00	10/28/1993
CODELL, ORIGINAL HOLE				40		6,700.00		6,710.00	11/4/2005
Stimulation Intervals									
Zone					Start Date		Top (ftKB)		Btm (ftKB)
CODELL, ORIGINAL HOLE					10/28/1993		6,700.0		6,710.0
CODELL, ORIGINAL HOLE					11/15/2005		6,700.0		6,710.0
Other In Hole									
Run Date		Des				OD (in)		Top (ftKB)	Btm (ftKB)
Logs									
Date		Type					Top, MD (ftKB)		Btm, MD (ftKB)
10/15/1993		COMPENSATED DENSITY					3,000.0		6,870.0
10/27/1993		CEMENT BOND					5,750.0		6,839.0
8/22/2016		GYRO					0.0		6,600.0
Plug Back Total Depths									
Date		Type			Com				Depth (ftKB)
10/27/1993		FILL			DEPTH LOGGER ON CBL				6,846.0
11/19/2005		FILL			TAG TO LAND TUBING				6,776.0