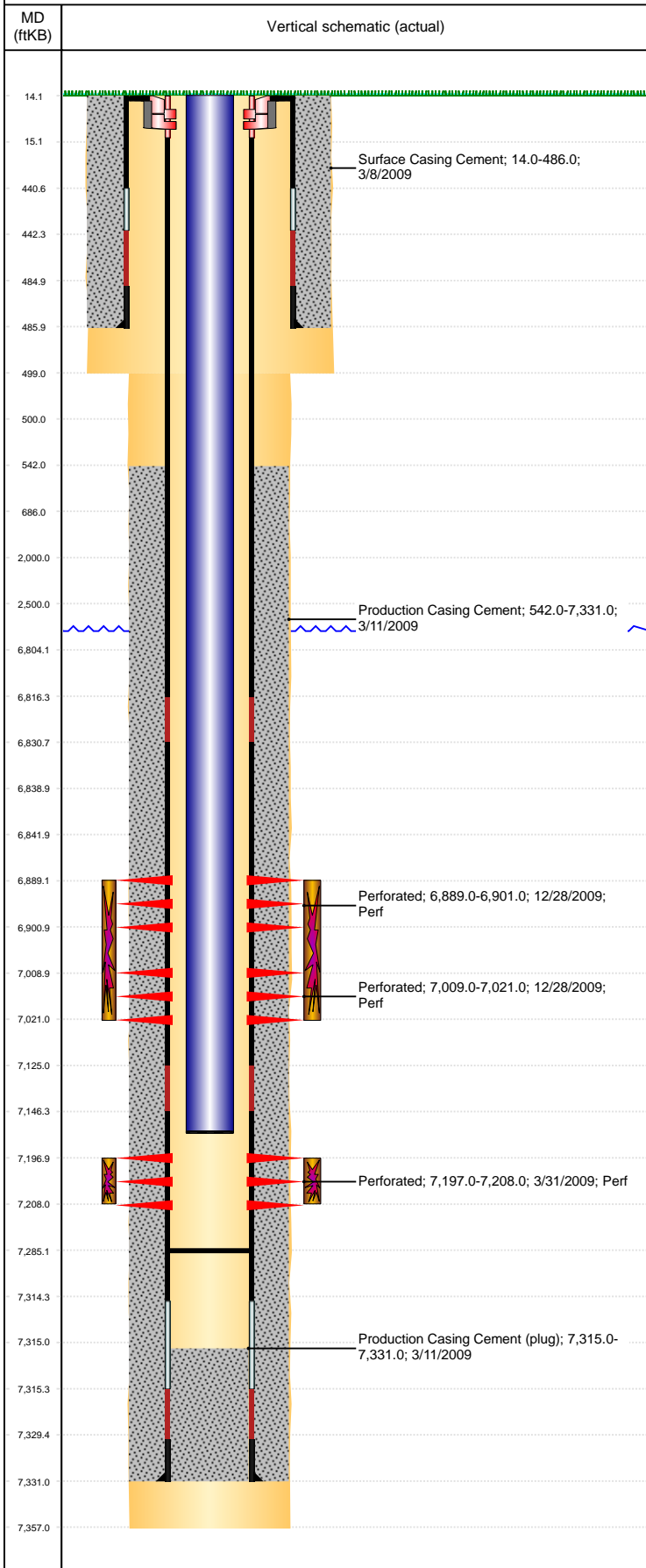


Well Name: ROACH N14-21

VERTICAL, ORIGINAL HOLE, 6/18/2019 10:59:58 AM



Well Header									
API 05-123-29725		Business Unit DJ BASIN			District 15		Well Config VERTICAL		
KB - GL / MSL (ft... 14.00		Spud Date 3/7/2009		P & A Date		Well Production Status PR		SoRT No	
Comment 318Ae LOCATION									
Surface Location (Congressional)									
Qtr 3 NW	Qtr 4 SE	Section 14	Twnshp 5	Twnsh... N	Range 67	Rng E... W	Actual Latitude (°) 40.39939082	Actual Longitude (°) -104.85974529	
Wellbore Sections									
Section Des			Size (in)			Act Top, MD (ftKB)		Act Btm, MD (ftKB)	
SURFACE			12 1/4			14		499	
PRODUCTION			7 7/8			499		7,357	
Casing Strings									
Csg Des			Run Date		OD (in)	Wt/Len (lb/ft)	Grade	Top, MD (ftKB)	MD (ftKB)
Surface			3/7/2009		8 5/8	24.00	J-55	14.0	486.0
Production			3/10/2009		4 1/2	11.60	M-80	14.0	7,331.0
Cement									
Des					Start Date		Top (ftKB)		Btm (ftKB)
Surface Casing Cement					3/8/2009		14.0		486.0
Production Casing Cement					3/11/2009		542.0		7,331.0
Zone Statuses									
Zone Name	Status Date	Status	Fluid Type	Job				Prod Method	
NIOBRARA	12/31/2009	PR		DRILLING/COMPLETION - ORIGINAL, 3/6/2009...					
CODELL	12/31/2009	PR		DRILLING/COMPLETION - ORIGINAL, 3/6/2009...					
Perforation Data									
Linked Zone		Bnch/Stg	Entered Shot Total	Top (ftKB)		Btm (ftKB)		Date	
NIOBRARA, ORIGINAL HOLE		A	24	6,889.00		6,901.00		12/28/2009	
NIOBRARA, ORIGINAL HOLE		B	24	7,009.00		7,021.00		12/28/2009	
CODELL, ORIGINAL HOLE			44	7,197.00		7,208.00		3/31/2009	
Stimulation Intervals									
Zone				Start Date		Top (ftKB)		Btm (ftKB)	
NIOBRARA, ORIGINAL HOLE				12/28/2009		6,889.0		7,021.0	
CODELL, ORIGINAL HOLE				12/28/2009		7,197.0		7,208.0	
Other In Hole									
Run Date		Des				OD (in)	Top (ftKB)	Btm (ftKB)	
7/11/2018		Plunger Lift				1 7/8			
Logs									
Date		Type				Top, MD (ftKB)		Btm, MD (ftKB)	
3/10/2009		Caliper/Comp. Density/Neutron/GR/SP/ML				2,490.0		7,337.0	
3/10/2009		DIL/GR/SP/Caliper				487.0		7,337.0	
3/18/2009		CBL/CCL/GR				300.0		7,320.0	
6/15/2017		GYRO				0.0		7,100.0	
Plug Back Total Depths									
Date		Type		Com				Depth (ftKB)	
4/7/2010		FILL						7,319.0	
6/28/2013		FILL						7,285.0	