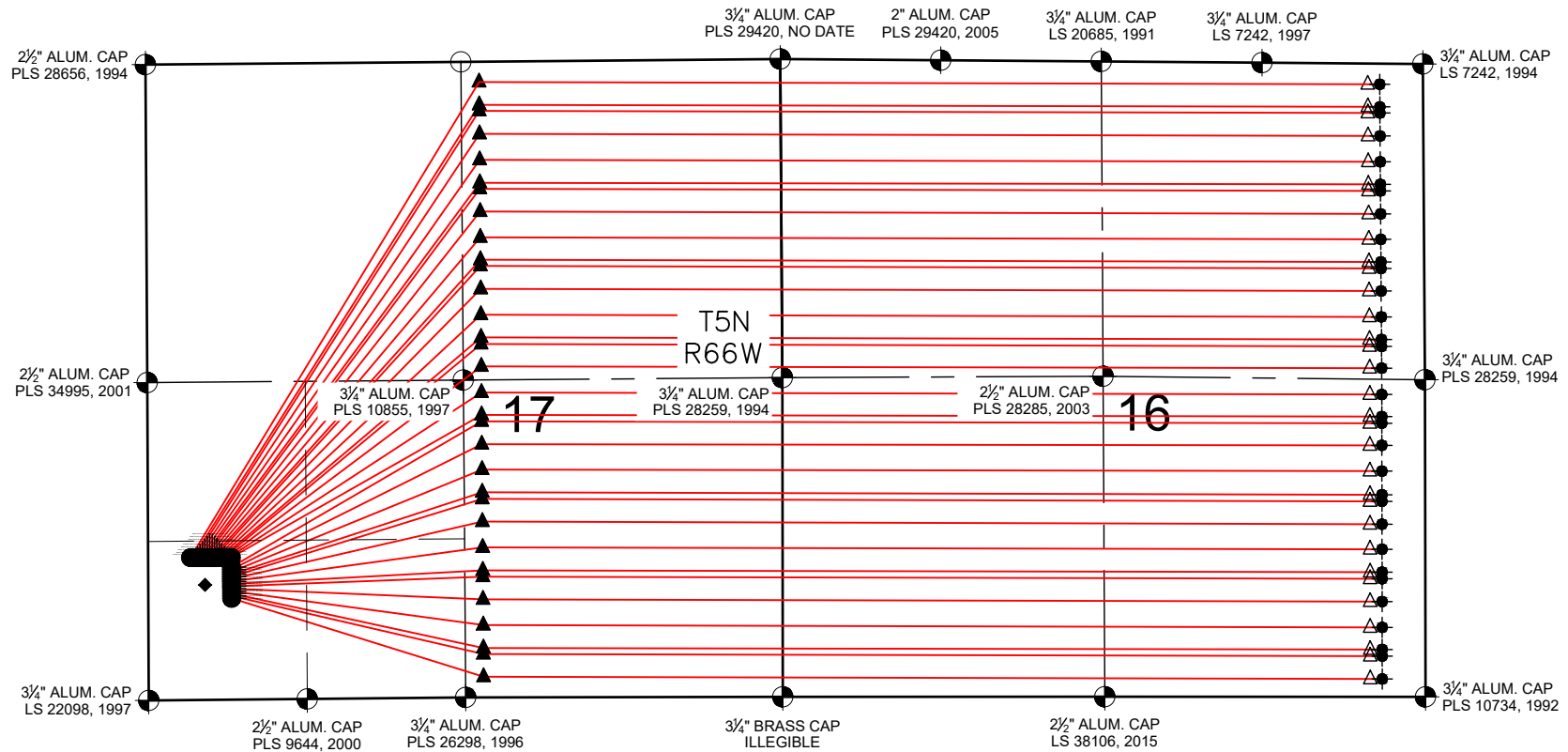


RIDGE STATE 33-17 PAD MULTI-WELL PLAN

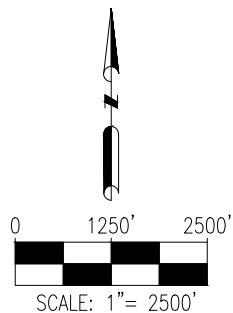


NOTES:

1. THIS FIELD SURVEY CONFORMS TO THE MINIMUM STANDARDS SET BY THE C.O.G.C.C., RULE NO. 215
2. ALL DISTANCES AND BEARINGS SHOWN HEREON ARE GROUND VALUES AS GPS MEASURED IN THE FIELD, WITH TIES TO WELLS MEASURED PERPENDICULAR TO SECTION LINES. THIS LOW DISTORTION PROJECTION (LDP) IS BASED ON THE NORTH AMERICAN DATUM OF 1983, U.S. SURVEY FOOT WITH A LATITUDE ORIGIN OF 40.392315°, A CENTRAL MERIDIAN LONGITUDE OF -104.794248°, AND A SCALE FACTOR ON THE CENTRAL MERIDIAN OF 1.000228 (EXACT). THE LDP BASIS OF BEARINGS IS GEODETIC NORTH.
3. FIELD VERIFICATION OF MONUMENTS COMPLETED WITHIN 1 YEAR OF SIGNATURE DATE.

LEGEND

- | | |
|-------------------------|---------------------------------|
| ● = EXISTING MONUMENT | △ = BOTTOM OF PRODUCTION ZONE |
| ○ = CALCULATED POSITION | ▲ = TOP OF PRODUCTION ZONE |
| ● = PROPOSED WELL | TPZ = TOP OF PRODUCTION ZONE |
| ◆ = EXISTING WELL | BHL = BOTTOM HOLE LOCATION |
| ⬮ = BOTTOM HOLE | BPZ = BOTTOM OF PRODUCTION ZONE |



SHEET 1 OF 7



FIELD DATE:
06-06-18

DRAWING DATE:
11-21-18

BY:
JDG

CHECKED BY:
CSG

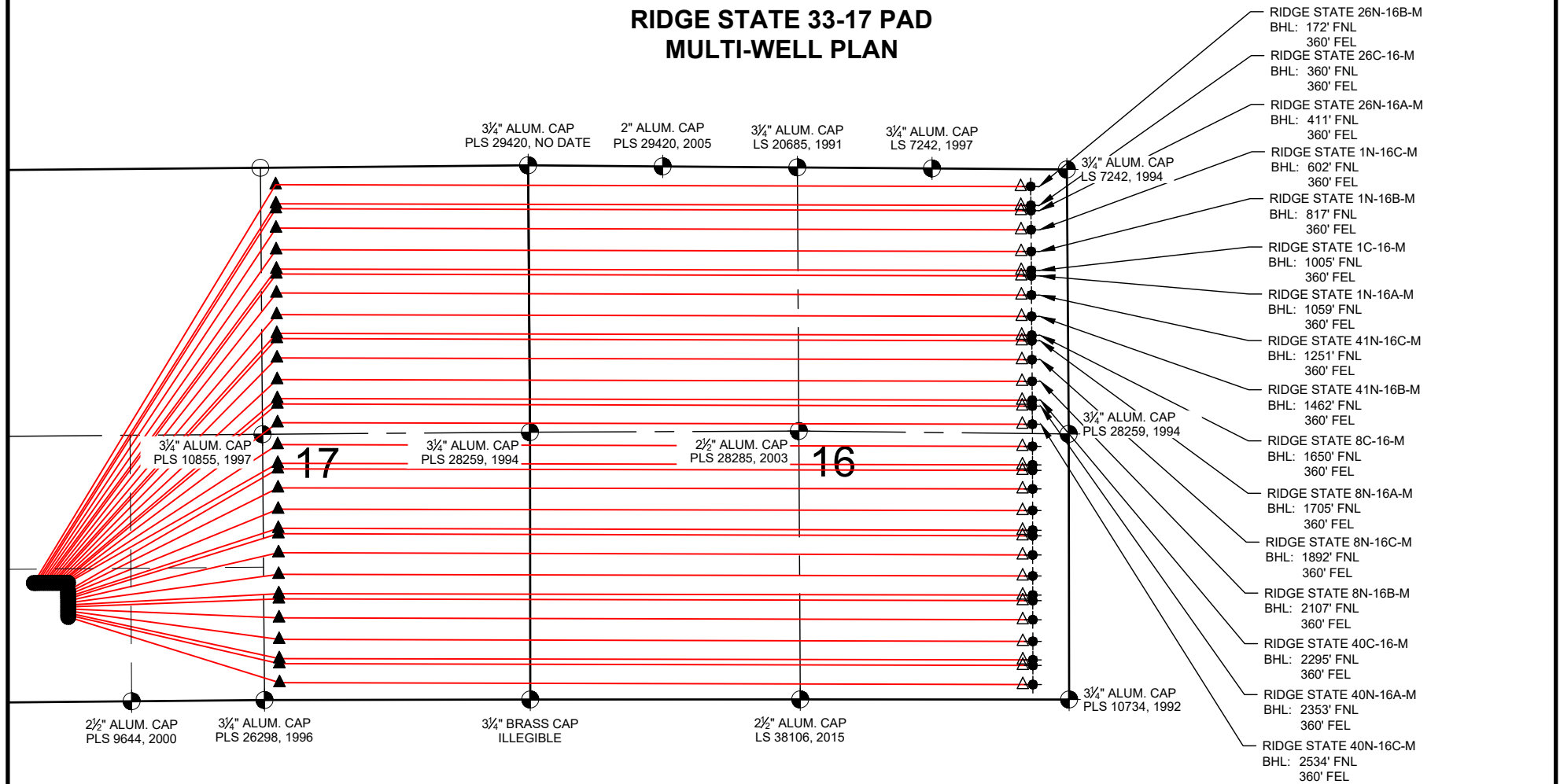
WELL NAME:
RIDGE STATE 33-17 PAD

SURFACE LOCATION:
SW 1/4 SW 1/4 SEC. 17, T5N, R66W, 6TH P.M.
WELD COUNTY, COLORADO

PREPARED FOR:



RIDGE STATE 33-17 PAD MULTI-WELL PLAN

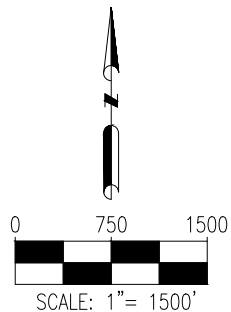


NOTES:

1. THIS FIELD SURVEY CONFORMS TO THE MINIMUM STANDARDS SET BY THE C.O.G.C.C., RULE NO. 215
2. ALL DISTANCES AND BEARINGS SHOWN HEREON ARE GROUND VALUES AS GPS MEASURED IN THE FIELD, WITH TIES TO WELLS MEASURED PERPENDICULAR TO SECTION LINES. THIS LOW DISTORTION PROJECTION (LDP) IS BASED ON THE NORTH AMERICAN DATUM OF 1983, U.S. SURVEY FOOT WITH A LATITUDE ORIGIN OF 40.392315°, A CENTRAL MERIDIAN LONGITUDE OF -104.794248°, AND A SCALE FACTOR ON THE CENTRAL MERIDIAN OF 1.000228 (EXACT). THE LDP BASIS OF BEARINGS IS GEODETIC NORTH.
3. FIELD VERIFICATION OF MONUMENTS COMPLETED WITHIN 1 YEAR OF SIGNATURE DATE.

LEGEND

- = EXISTING MONUMENT
- = CALCULATED POSITION
- = PROPOSED WELL
- ◆ = EXISTING WELL
- ⬮ = BOTTOM HOLE
- △ = BOTTOM OF PRODUCTION ZONE
- ▲ = TOP OF PRODUCTION ZONE
- TPZ = TOP OF PRODUCTION ZONE
- BHL = BOTTOM HOLE LOCATION
- BPZ = BOTTOM OF PRODUCTION ZONE



SHEET 2 OF 7



FIELD DATE:
06-06-18

DRAWING DATE:
11-21-18

BY:
JDG

CHECKED BY:
CSG

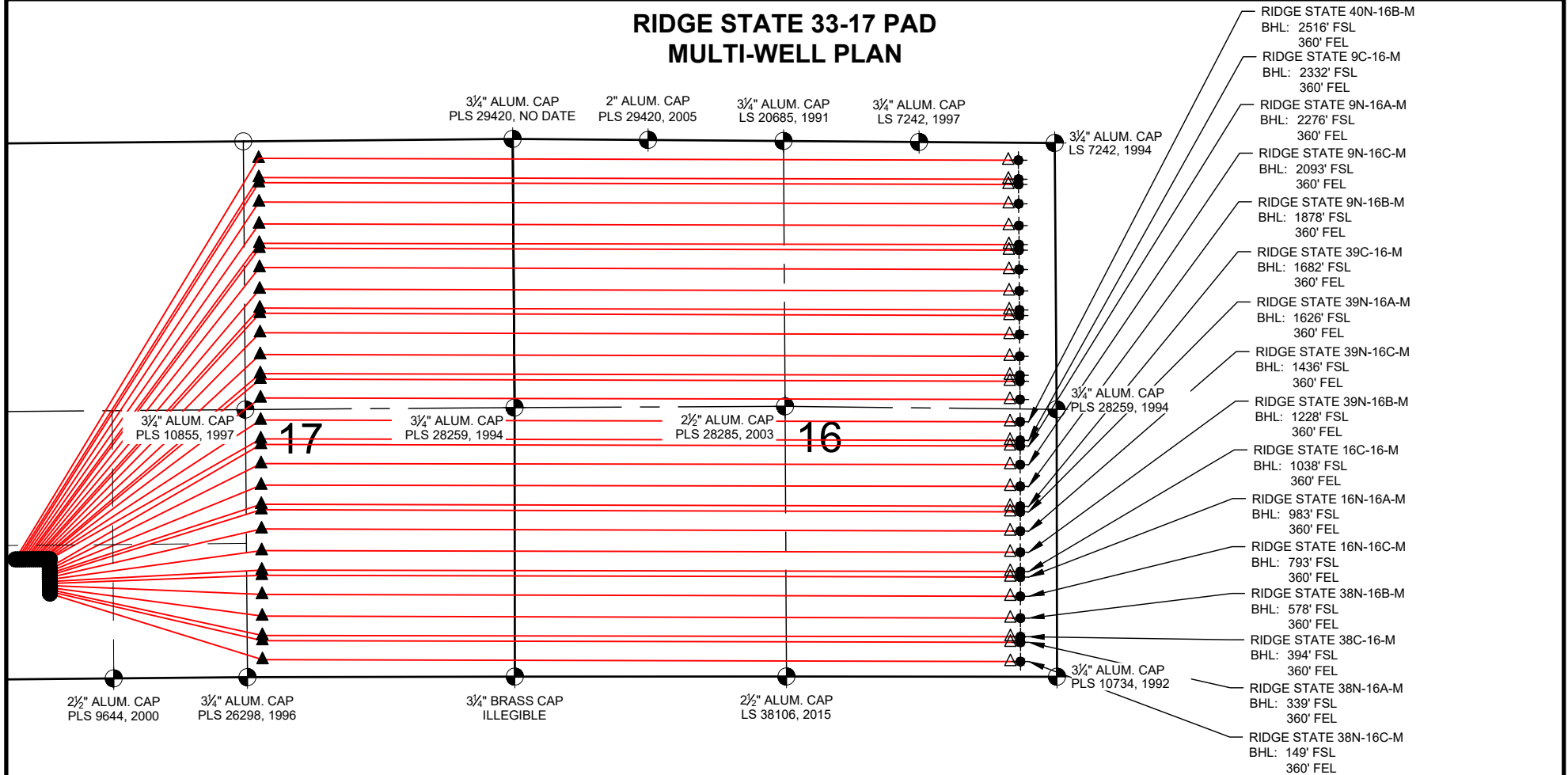
WELL NAME:
RIDGE STATE 33-17 PAD

SURFACE LOCATION:
SW 1/4 SW 1/4 SEC. 17, T5N, R66W, 6TH P.M.
WELD COUNTY, COLORADO

PREPARED FOR:



RIDGE STATE 33-17 PAD MULTI-WELL PLAN

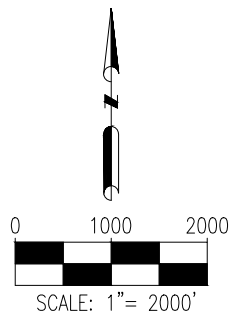


NOTES:

1. THIS FIELD SURVEY CONFORMS TO THE MINIMUM STANDARDS SET BY THE C.O.G.C.C., RULE NO. 215
2. ALL DISTANCES AND BEARINGS SHOWN HEREON ARE GROUND VALUES AS GPS MEASURED IN THE FIELD, WITH TIES TO WELLS MEASURED PERPENDICULAR TO SECTION LINES. THIS LOW DISTORTION PROJECTION (LDP) IS BASED ON THE NORTH AMERICAN DATUM OF 1983, U.S. SURVEY FOOT WITH A LATITUDE ORIGIN OF 40.392315°, A CENTRAL MERIDIAN LONGITUDE OF -104.794248°, AND A SCALE FACTOR ON THE CENTRAL MERIDIAN OF 1.000228 (EXACT). THE LDP BASIS OF BEARINGS IS GEODETIC NORTH.
3. FIELD VERIFICATION OF MONUMENTS COMPLETED WITHIN 1 YEAR OF SIGNATURE DATE.

LEGEND

- = EXISTING MONUMENT
- = CALCULATED POSITION
- = PROPOSED WELL
- ◆ = EXISTING WELL
- ⬮ = BOTTOM HOLE
- △ = BOTTOM OF PRODUCTION ZONE
- ▲ = TOP OF PRODUCTION ZONE
- TPZ = TOP OF PRODUCTION ZONE
- BHL = BOTTOM HOLE LOCATION
- BPZ = BOTTOM OF PRODUCTION ZONE



SHEET 3 OF 7



FIELD DATE:
06-06-18

DRAWING DATE:
11-21-18

BY:
JDG

CHECKED BY:
CSG

WELL NAME:

RIDGE STATE 33-17 PAD

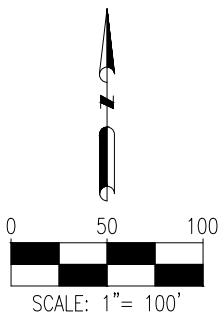
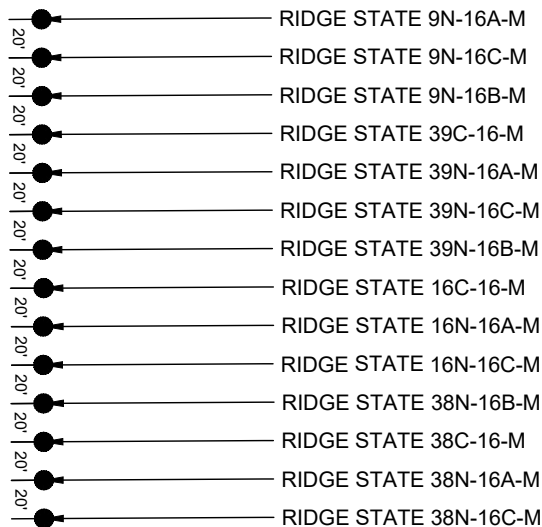
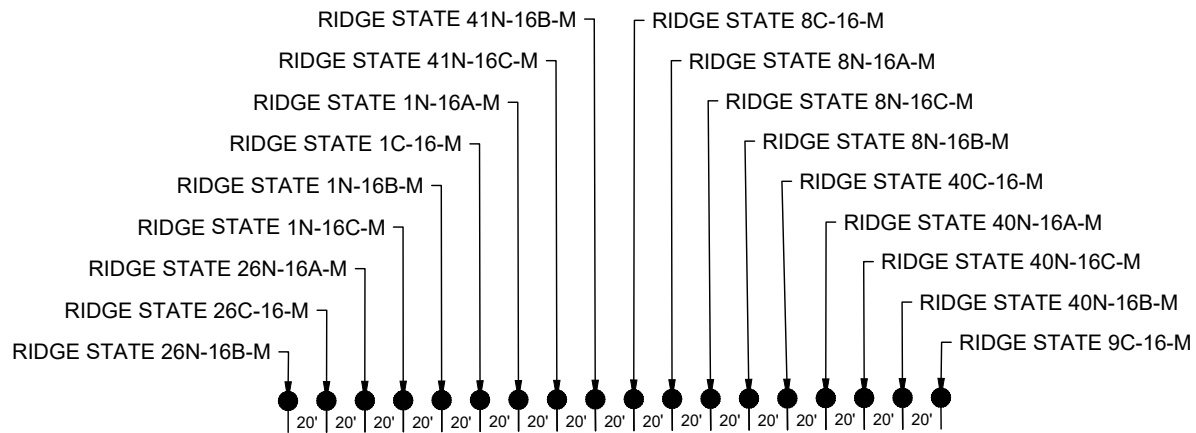
SURFACE LOCATION:

SW 1/4 SW 1/4 SEC. 17, T5N, R66W, 6TH P.M.
WELD COUNTY, COLORADO

PREPARED FOR:



RIDGE STATE 33-17 PAD MULTI-WELL PLAN



LEGEND

● = PROPOSED WELL

SHEET 4 OF 7

FIELD DATE:
06-06-18

DRAWING DATE:
11-21-18

BY:
JDG

CHECKED BY:
CSG

WELL NAME:
RIDGE STATE 33-17 PAD

SURFACE LOCATION:
SW 1/4 SW 1/4 SEC. 17, T5N, R66W, 6TH P.M.
WELD COUNTY, COLORADO

PREPARED FOR:



SRC ENERGY

RIDGE STATE 33-17 PAD MULTI-WELL PLAN

Ridge State 26N-16B-M

SURFACE HOLE	TOP OF PRODUCTION ZONE	BOTTOM OF PRODUCTION ZONE	BOTTOM HOLE	FORMATION
1185' FSL & 354' FWL	169' FNL & 2508' FEL	173' FNL & 460' FEL	172' FNL & 360' FEL	NIOBRARA
LAT: 40.395491°	LAT: 40.406351°	LAT: 40.406300°	LAT: 40.406300°	
LONG: -104.811946°	LONG: -104.803326°	LONG: -104.776766°	LONG: -104.776407°	

Ridge State 26C-16-M

SURFACE HOLE	TOP OF PRODUCTION ZONE	BOTTOM OF PRODUCTION ZONE	BOTTOM HOLE	FORMATION
1185' FSL & 374' FWL	359' FNL & 2508' FEL	360' FNL & 460' FEL	360' FNL & 360' FEL	CODELL
LAT: 40.395491°	LAT: 40.405831°	LAT: 40.405785°	LAT: 40.405784°	
LONG: -104.811874°	LONG: -104.803321°	LONG: -104.776761°	LONG: -104.776402°	

Ridge State 26N-16A-M

SURFACE HOLE	TOP OF PRODUCTION ZONE	BOTTOM OF PRODUCTION ZONE	BOTTOM HOLE	FORMATION
1185' FSL & 394' FWL	408' FNL & 2508' FEL	412' FNL & 460' FEL	411' FNL & 360' FEL	NIOBRARA
LAT: 40.395492°	LAT: 40.405695°	LAT: 40.405645°	LAT: 40.405644°	
LONG: -104.811803°	LONG: -104.803320°	LONG: -104.776760°	LONG: -104.776401°	

Ridge State 1N-16C-M

SURFACE HOLE	TOP OF PRODUCTION ZONE	BOTTOM OF PRODUCTION ZONE	BOTTOM HOLE	FORMATION
1184' FSL & 414' FWL	600' FNL & 2508' FEL	603' FNL & 460' FEL	602' FNL & 360' FEL	NIOBRARA
LAT: 40.395492°	LAT: 40.405168°	LAT: 40.405120°	LAT: 40.405119°	
LONG: -104.811731°	LONG: -104.803314°	LONG: -104.776756°	LONG: -104.776397°	

Ridge State 1N-16B-M

SURFACE HOLE	TOP OF PRODUCTION ZONE	BOTTOM OF PRODUCTION ZONE	BOTTOM HOLE	FORMATION
1184' FSL & 434' FWL	816' FNL & 2508' FEL	818' FNL & 460' FEL	817' FNL & 360' FEL	NIOBRARA
LAT: 40.395492°	LAT: 40.404577°	LAT: 40.404530°	LAT: 40.404529°	
LONG: -104.811659°	LONG: -104.803308°	LONG: -104.776750°	LONG: -104.776391°	

Ridge State 1C-16-M

SURFACE HOLE	TOP OF PRODUCTION ZONE	BOTTOM OF PRODUCTION ZONE	BOTTOM HOLE	FORMATION
1184' FSL & 454' FWL	1008' FNL & 2508' FEL	1005' FNL & 460' FEL	1005' FNL & 360' FEL	CODELL
LAT: 40.395493°	LAT: 40.404051°	LAT: 40.404015°	LAT: 40.404014°	
LONG: -104.811587°	LONG: -104.803303°	LONG: -104.776746°	LONG: -104.776387°	

Ridge State 1N-16A-M

SURFACE HOLE	TOP OF PRODUCTION ZONE	BOTTOM OF PRODUCTION ZONE	BOTTOM HOLE	FORMATION
1184' FSL & 474' FWL	1057' FNL & 2508' FEL	1060' FNL & 460' FEL	1059' FNL & 360' FEL	NIOBRARA
LAT: 40.395493°	LAT: 40.403915°	LAT: 40.403865°	LAT: 40.403864°	
LONG: -104.811515°	LONG: -104.803302°	LONG: -104.776745°	LONG: -104.776386°	

Ridge State 41N-16C-M

SURFACE HOLE	TOP OF PRODUCTION ZONE	BOTTOM OF PRODUCTION ZONE	BOTTOM HOLE	FORMATION
1184' FSL & 494' FWL	1246' FNL & 2508' FEL	1251' FNL & 460' FEL	1251' FNL & 360' FEL	NIOBRARA
LAT: 40.395493°	LAT: 40.403397°	LAT: 40.403341°	LAT: 40.403340°	
LONG: -104.811444°	LONG: -104.803296°	LONG: -104.776740°	LONG: -104.776381°	

Ridge State 41N-16B-M

SURFACE HOLE	TOP OF PRODUCTION ZONE	BOTTOM OF PRODUCTION ZONE	BOTTOM HOLE	FORMATION
1184' FSL & 514' FWL	1461' FNL & 2508' FEL	1463' FNL & 460' FEL	1462' FNL & 360' FEL	NIOBRARA
LAT: 40.395493°	LAT: 40.402807°	LAT: 40.402760°	LAT: 40.402759°	
LONG: -104.811372°	LONG: -104.803290°	LONG: -104.776735°	LONG: -104.776376°	

Ridge State 8C-16-M

SURFACE HOLE	TOP OF PRODUCTION ZONE	BOTTOM OF PRODUCTION ZONE	BOTTOM HOLE	FORMATION
1184' FSL & 534' FWL	1647' FNL & 2507' FEL	1650' FNL & 460' FEL	1650' FNL & 360' FEL	CODELL
LAT: 40.395494°	LAT: 40.402297°	LAT: 40.402245°	LAT: 40.402244°	
LONG: -104.811300°	LONG: -104.803285°	LONG: -104.776730°	LONG: -104.776371°	

Ridge State 8N-16A-M

SURFACE HOLE	TOP OF PRODUCTION ZONE	BOTTOM OF PRODUCTION ZONE	BOTTOM HOLE	FORMATION
1184' FSL & 554' FWL	1698' FNL & 2507' FEL	1705' FNL & 460' FEL	1705' FNL & 360' FEL	NIOBRARA
LAT: 40.395494°	LAT: 40.402155°	LAT: 40.402095°	LAT: 40.402094°	
LONG: -104.811228°	LONG: -104.803284°	LONG: -104.776729°	LONG: -104.776370°	

Ridge State 8N-16C-M

SURFACE HOLE	TOP OF PRODUCTION ZONE	BOTTOM OF PRODUCTION ZONE	BOTTOM HOLE	FORMATION
1184' FSL & 574' FWL	1890' FNL & 2507' FEL	1893' FNL & 460' FEL	1892' FNL & 360' FEL	NIOBRARA
LAT: 40.395494°	LAT: 40.401629°	LAT: 40.401580°	LAT: 40.401579°	
LONG: -104.811156°	LONG: -104.803278°	LONG: -104.776725°	LONG: -104.776366°	

SHEET 5 OF 7

FIELD DATE:
06-06-18

DRAWING DATE:
11-21-18

BY:
JDG

CHECKED BY:
CSG

WELL NAME:

RIDGE STATE 33-17 PAD

SURFACE LOCATION:

SW 1/4 SW 1/4 SEC. 17, T5N, R66W, 6TH P.M.
WELD COUNTY, COLORADO

PREPARED FOR:



SRC ENERGY

RIDGE STATE 33-17 PAD MULTI-WELL PLAN

Ridge State 8N-16B-M

SURFACE HOLE	TOP OF PRODUCTION ZONE	BOTTOM OF PRODUCTION ZONE	BOTTOM HOLE	FORMATION
1184' FSL & 594' FWL	2105' FNL & 2507' FEL	2108' FNL & 460' FEL	2107' FNL & 360' FEL	NIOBRARA
LAT: 40.395495°	LAT: 40.401039°	LAT: 40.400990°	LAT: 40.400989°	
LONG: -104.811085°	LONG: -104.803272°	LONG: -104.776719°	LONG: -104.776361°	

Ridge State 40C-16-M

SURFACE HOLE	TOP OF PRODUCTION ZONE	BOTTOM OF PRODUCTION ZONE	BOTTOM HOLE	FORMATION
1184' FSL & 614' FWL	2294' FNL & 2507' FEL	2295' FNL & 460' FEL	2295' FNL & 360' FEL	CODELL
LAT: 40.395495°	LAT: 40.400521°	LAT: 40.400475°	LAT: 40.400474°	
LONG: -104.811013°	LONG: -104.803267°	LONG: -104.776715°	LONG: -104.776356°	

Ridge State 40N-16A-M

SURFACE HOLE	TOP OF PRODUCTION ZONE	BOTTOM OF PRODUCTION ZONE	BOTTOM HOLE	FORMATION
1183' FSL & 634' FWL	2348' FNL & 2507' FEL	2353' FNL & 460' FEL	2353' FNL & 360' FEL	NIOBRARA
LAT: 40.395495°	LAT: 40.400372°	LAT: 40.400315°	LAT: 40.400315°	
LONG: -104.810941°	LONG: -104.803265°	LONG: -104.776714°	LONG: -104.776355°	

Ridge State 40N-16C-M

SURFACE HOLE	TOP OF PRODUCTION ZONE	BOTTOM OF PRODUCTION ZONE	BOTTOM HOLE	FORMATION
1183' FSL & 654' FWL	2534' FNL & 2507' FEL	2534' FNL & 460' FEL	2534' FNL & 360' FEL	NIOBRARA
LAT: 40.395496°	LAT: 40.399861°	LAT: 40.399819°	LAT: 40.399818°	
LONG: -104.810869°	LONG: -104.803260°	LONG: -104.776709°	LONG: -104.776350°	

Ridge State 40N-16B-M

SURFACE HOLE	TOP OF PRODUCTION ZONE	BOTTOM OF PRODUCTION ZONE	BOTTOM HOLE	FORMATION
1183' FSL & 674' FWL	2537' FSL & 2506' FEL	2516' FSL & 460' FEL	2516' FSL & 360' FEL	NIOBRARA
LAT: 40.395496°	LAT: 40.399264°	LAT: 40.399217°	LAT: 40.399216°	
LONG: -104.810798°	LONG: -104.803254°	LONG: -104.776706°	LONG: -104.776347°	

Ridge State 9C-16-M

SURFACE HOLE	TOP OF PRODUCTION ZONE	BOTTOM OF PRODUCTION ZONE	BOTTOM HOLE	FORMATION
1183' FSL & 694' FWL	2351' FSL & 2505' FEL	2332' FSL & 460' FEL	2332' FSL & 360' FEL	CODELL
LAT: 40.395496°	LAT: 40.398753°	LAT: 40.398712°	LAT: 40.398712°	
LONG: -104.810726°	LONG: -104.803249°	LONG: -104.776705°	LONG: -104.776346°	

Ridge State 9N-16A-M

SURFACE HOLE	TOP OF PRODUCTION ZONE	BOTTOM OF PRODUCTION ZONE	BOTTOM HOLE	FORMATION
1103' FSL & 694' FWL	2296' FSL & 2504' FEL	2277' FSL & 460' FEL	2276' FSL & 360' FEL	NIOBRARA
LAT: 40.395277°	LAT: 40.398604°	LAT: 40.398561°	LAT: 40.398560°	
LONG: -104.810724°	LONG: -104.803247°	LONG: -104.776705°	LONG: -104.776346°	

Ridge State 9N-16C-M

SURFACE HOLE	TOP OF PRODUCTION ZONE	BOTTOM OF PRODUCTION ZONE	BOTTOM HOLE	FORMATION
1083' FSL & 694' FWL	2107' FSL & 2503' FEL	2093' FSL & 460' FEL	2093' FSL & 360' FEL	NIOBRARA
LAT: 40.395222°	LAT: 40.398085°	LAT: 40.398056°	LAT: 40.398056°	
LONG: -104.810724°	LONG: -104.803242°	LONG: -104.776704°	LONG: -104.776345°	

Ridge State 9N-16B-M

SURFACE HOLE	TOP OF PRODUCTION ZONE	BOTTOM OF PRODUCTION ZONE	BOTTOM HOLE	FORMATION
1063' FSL & 694' FWL	1896' FSL & 2502' FEL	1878' FSL & 460' FEL	1878' FSL & 360' FEL	NIOBRARA
LAT: 40.395167°	LAT: 40.397503°	LAT: 40.397467°	LAT: 40.397467°	
LONG: -104.810723°	LONG: -104.803236°	LONG: -104.776703°	LONG: -104.776344°	

Ridge State 39C-16-M

SURFACE HOLE	TOP OF PRODUCTION ZONE	BOTTOM OF PRODUCTION ZONE	BOTTOM HOLE	FORMATION
1043' FSL & 694' FWL	1707' FSL & 2501' FEL	1682' FSL & 460' FEL	1682' FSL & 360' FEL	CODELL
LAT: 40.395112°	LAT: 40.396985°	LAT: 40.396929°	LAT: 40.396928°	
LONG: -104.810723°	LONG: -104.803231°	LONG: -104.776702°	LONG: -104.776343°	

Ridge State 39N-16A-M

SURFACE HOLE	TOP OF PRODUCTION ZONE	BOTTOM OF PRODUCTION ZONE	BOTTOM HOLE	FORMATION
1023' FSL & 694' FWL	1652' FSL & 2500' FEL	1627' FSL & 460' FEL	1626' FSL & 360' FEL	NIOBRARA
LAT: 40.395057°	LAT: 40.396836°	LAT: 40.396777°	LAT: 40.396776°	
LONG: -104.810723°	LONG: -104.803229°	LONG: -104.776702°	LONG: -104.776343°	

Ridge State 39N-16C-M

SURFACE HOLE	TOP OF PRODUCTION ZONE	BOTTOM OF PRODUCTION ZONE	BOTTOM HOLE	FORMATION
1003' FSL & 694' FWL	1463' FSL & 2499' FEL	1437' FSL & 460' FEL	1436' FSL & 360' FEL	NIOBRARA
LAT: 40.395002°	LAT: 40.396317°	LAT: 40.396255°	LAT: 40.396255°	
LONG: -104.810722°	LONG: -104.803224°	LONG: -104.776701°	LONG: -104.776342°	

SHEET 6 OF 7

RIDGE STATE 33-17 PAD MULTI-WELL PLAN

Ridge State 39N-16B-M

SURFACE HOLE	TOP OF PRODUCTION ZONE	BOTTOM OF PRODUCTION ZONE	BOTTOM HOLE	FORMATION
983' FSL & 694' FWL	1248' FSL & 2498' FEL	1228' FSL & 460' FEL	1228' FSL & 360' FEL	NIOBRARA
LAT: 40.394947°	LAT: 40.395727°	LAT: 40.395683°	LAT: 40.395683°	
LONG: -104.810722°	LONG: -104.803218°	LONG: -104.776699°	LONG: -104.776341°	

Ridge State 16C-16-M

SURFACE HOLE	TOP OF PRODUCTION ZONE	BOTTOM OF PRODUCTION ZONE	BOTTOM HOLE	FORMATION
963' FSL & 694' FWL	1057' FSL & 2496' FEL	1038' FSL & 460' FEL	1038' FSL & 360' FEL	CODELL
LAT: 40.394892°	LAT: 40.395201°	LAT: 40.395162°	LAT: 40.395161°	
LONG: -104.810720°	LONG: -104.803213°	LONG: -104.776698°	LONG: -104.776340°	

Ridge State 16N-16A-M

SURFACE HOLE	TOP OF PRODUCTION ZONE	BOTTOM OF PRODUCTION ZONE	BOTTOM HOLE	FORMATION
943' FSL & 694' FWL	1005' FSL & 2496' FEL	983' FSL & 460' FEL	983' FSL & 360' FEL	NIOBRARA
LAT: 40.394838°	LAT: 40.395060°	LAT: 40.395010°	LAT: 40.395010°	
LONG: -104.810721°	LONG: -104.803211°	LONG: -104.776698°	LONG: -104.776339°	

Ridge State 16N-16C-M

SURFACE HOLE	TOP OF PRODUCTION ZONE	BOTTOM OF PRODUCTION ZONE	BOTTOM HOLE	FORMATION
923' FSL & 694' FWL	816' FSL & 2495' FEL	793' FSL & 460' FEL	793' FSL & 360' FEL	NIOBRARA
LAT: 40.394783°	LAT: 40.394541°	LAT: 40.394489°	LAT: 40.394488°	
LONG: -104.810721°	LONG: -104.803206°	LONG: -104.776697°	LONG: -104.776338°	

Ridge State 38N-16B-M

SURFACE HOLE	TOP OF PRODUCTION ZONE	BOTTOM OF PRODUCTION ZONE	BOTTOM HOLE	FORMATION
903' FSL & 694' FWL	602' FSL & 2493' FEL	578' FSL & 460' FEL	578' FSL & 360' FEL	NIOBRARA
LAT: 40.394728°	LAT: 40.393954°	LAT: 40.393900°	LAT: 40.393899°	
LONG: -104.810720°	LONG: -104.803200°	LONG: -104.776696°	LONG: -104.776337°	

Ridge State 38C-16-M

SURFACE HOLE	TOP OF PRODUCTION ZONE	BOTTOM OF PRODUCTION ZONE	BOTTOM HOLE	FORMATION
883' FSL & 694' FWL	411' FSL & 2492' FEL	394' FSL & 460' FEL	394' FSL & 360' FEL	CODELL
LAT: 40.394673°	LAT: 40.393429°	LAT: 40.393395°	LAT: 40.393394°	
LONG: -104.810720°	LONG: -104.803195°	LONG: -104.776695°	LONG: -104.776336°	

Ridge State 38N-16A-M

SURFACE HOLE	TOP OF PRODUCTION ZONE	BOTTOM OF PRODUCTION ZONE	BOTTOM HOLE	FORMATION
863' FSL & 694' FWL	361' FSL & 2492' FEL	339' FSL & 460' FEL	339' FSL & 360' FEL	NIOBRARA
LAT: 40.394618°	LAT: 40.393291°	LAT: 40.393243°	LAT: 40.393243°	
LONG: -104.810720°	LONG: -104.803194°	LONG: -104.776695°	LONG: -104.776336°	

Ridge State 38N-16C-M

SURFACE HOLE	TOP OF PRODUCTION ZONE	BOTTOM OF PRODUCTION ZONE	BOTTOM HOLE	FORMATION
843' FSL & 694' FWL	173' FSL & 2491' FEL	149' FSL & 460' FEL	149' FSL & 360' FEL	NIOBRARA
LAT: 40.394563°	LAT: 40.392775°	LAT: 40.392722°	LAT: 40.392721°	
LONG: -104.810719°	LONG: -104.803188°	LONG: -104.776694°	LONG: -104.776335°	

SHEET 7 OF 7



FIELD DATE: 06-06-18	WELL NAME: RIDGE STATE 33-17 PAD
DRAWING DATE: 11-21-18	SURFACE LOCATION: SW 1/4 SW 1/4 SEC. 17, T5N, R66W, 6TH P.M. WELD COUNTY, COLORADO
BY: JDG	CHECKED BY: CSG

