

Site: State  
Challenger 5-65 2-3 3BYH  
Location ID: 451622



Gravel Pad



Disturbed Area

ConocoPhillips



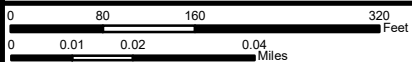
Wells

Author: Maxwell Blair

User Name: farkas

Scale: 1:2,000

Date: 6/11/2019



Coordinate System: NAD 1927 StatePlane Colorado Central FIPS 0502  
Units: US Feet

DISCLAIMER: NEITHER CONOCOPHILLIPS COMPANY (COPC)  
NOR ANY OF COPC'S REPRESENTATIVES MAKE ANY  
REPRESENTATION OR WARRANTY, EXPRESS OR IMPLIED, AS TO  
THE QUALITY, ACCURACY, COMPLETENESS OF THE  
INFORMATION CONTAINED HEREIN. This information is being  
furnished by COPC and COPC's Representatives as a convenience only,  
any reliance on or use of is at the sole risk of the user.

S:\ARC\_GIS\_DATA\COGCC Surveys -06-07-19\06-10-19\_COGCC\_Surveyed\_Sites.mxd

Location: State Challenger 5-65 2-3  
Size: 4.38 acres



Location: State Challenger 5-65 2-3  
Size: 2.77 acres







# STATE CHALLENGER 5-65 2-3 3BYH

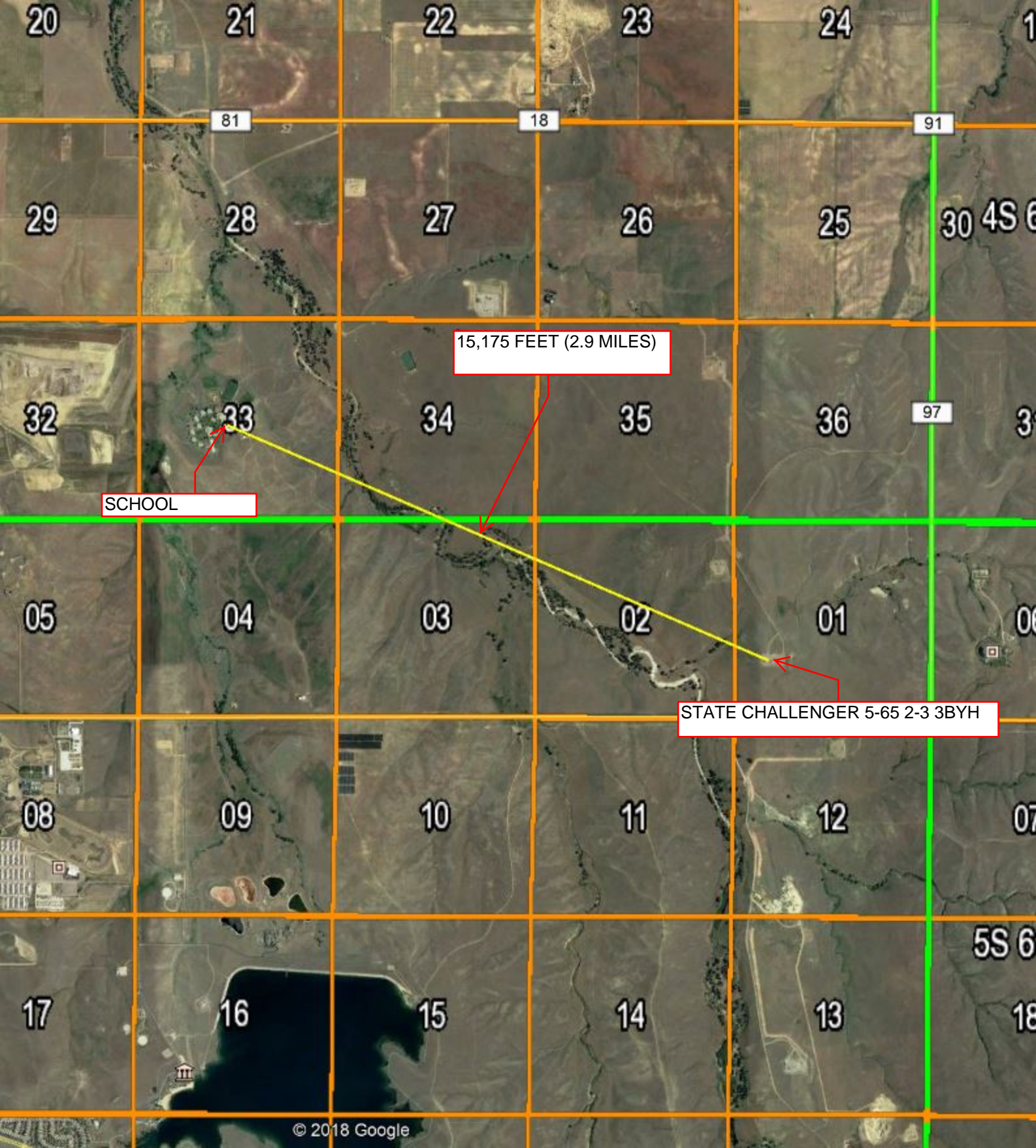
Well Site Photos











15,175 FEET (2.9 MILES)

SCHOOL

STATE CHALLENGER 5-65 2-3 3BYH