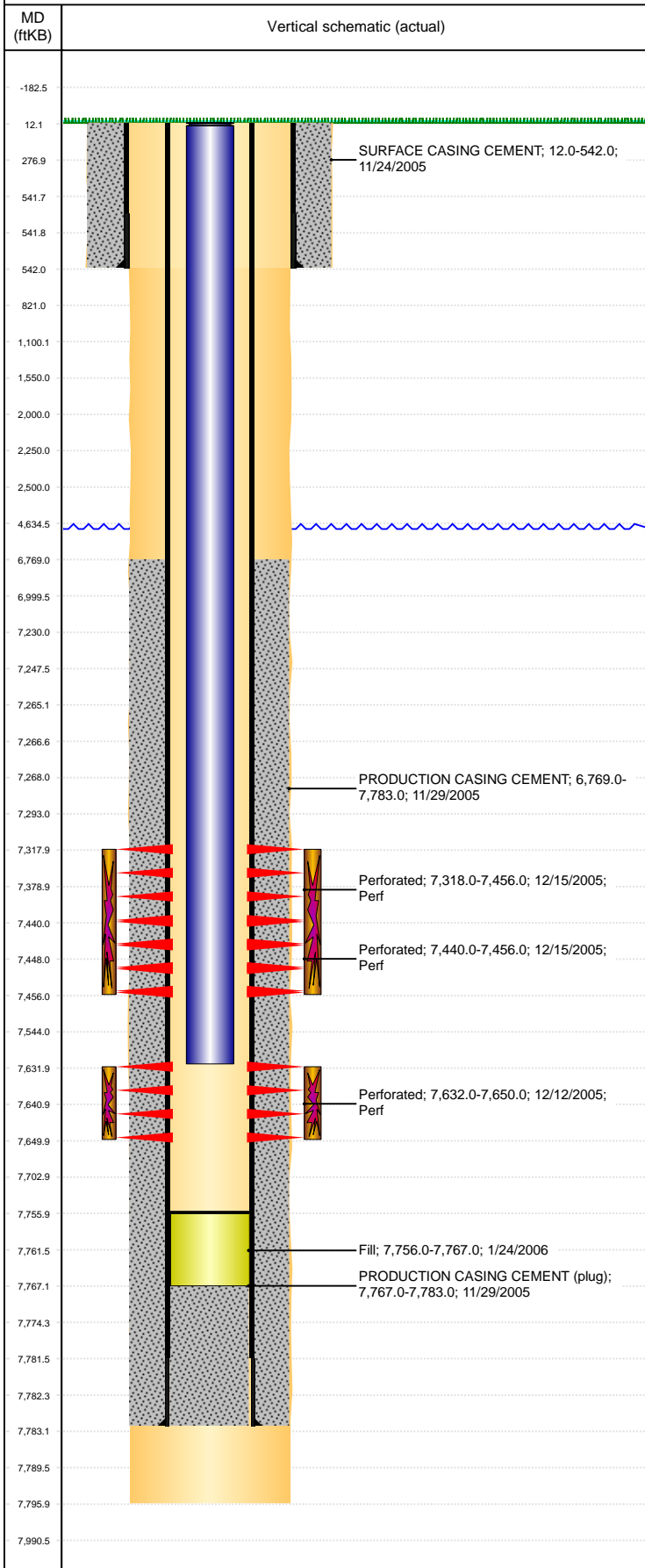


Well Name: STEVE J30-06

DEVIATED, ORIGINAL HOLE, 6/12/2019 10:38:09 AM



Well Header										
API 05-123-23353		Business Unit DJ BASIN			District 15		Well Config DEVIATED			
KB - GL / MSL (ft... 12.00		Spud Date 11/23/2005		P & A Date		Well Production Status PR			SoRT No	
Comment										
Surface Location (Congressional)										
Qtr 3 SW	Qtr 4 NW	Section 30	Twنشp 5	Twنش... N	Range 66	Rng E/... W	Actual Latitude (°) 40.37253254	Actual Longitude (°) -104.82972252		
Wellbore Sections										
Section Des			Size (in)			Act Top, MD (ftKB)		Act Btm, MD (ftKB)		
SURFACE			12 1/4			12		542		
PRODUCTION			7 7/8			542		7,796		
Casing Strings										
Csg Des			Run Date		OD (in)	Wt/Len (lb/ft)	Grade	Top, MD (ftKB)	MD (ftKB)	
Surface			11/23/2005		8 5/8	24.00	J-55	12.0	542.0	
PRODUCTION			11/29/2005		4 1/2	11.60	M-80	12.0	7,783.0	
Cement										
Des					Start Date		Top (ftKB)		Btm (ftKB)	
SURFACE CASING CEMENT					11/24/2005		12.0		542.0	
PRODUCTION CASING CEMENT					11/29/2005		6,769.0		7,783.0	
Zone Statuses										
Zone Name		Status Date	Status	Fluid Type	Job			Prod Method		
CODELL		12/17/2005	PR		DRILLING/COMPLETION - ORIGINAL, 11/23/200...					
NIOBRARA		12/17/2005	PR		DRILLING/COMPLETION - ORIGINAL, 11/23/200...					
Perforation Data										
Linked Zone			Bnch/Stg	Entered Shot Total	Top (ftKB)		Btm (ftKB)		Date	
NIOBRARA, ORIGINAL HOLE			A	96	7,318.00		7,456.00		12/15/2005	
NIOBRARA, ORIGINAL HOLE			B	96	7,440.00		7,456.00		12/15/2005	
CODELL, ORIGINAL HOLE				72	7,632.00		7,650.00		12/12/2005	
Stimulation Intervals										
Zone					Start Date		Top (ftKB)		Btm (ftKB)	
NIOBRARA, ORIGINAL HOLE					12/15/2005		7,318.0		7,456.0	
CODELL, ORIGINAL HOLE					12/15/2005		7,632.0		7,650.0	
Other In Hole										
Run Date			Des			OD (in)		Top (ftKB)		Btm (ftKB)
1/24/2006			Fill			4		7,756.0		7,767.0
6/8/2018			Plunger Lift			1 7/8				
Logs										
Date			Type				Top, MD (ftKB)		Btm, MD (ftKB)	
11/29/2005			INDUCTION				549.0		7,796.0	
12/12/2005			CBL/CCL/GR				6,649.0		7,762.0	
12/10/2018			GYRO				12.0		7,550.0	
Plug Back Total Depths										
Date			Type		Com				Depth (ftKB)	
12/12/2005			FILL		DEPTH LOGGER				7,764.0	
1/24/2006			FILL		SAND & CFP REMNANTS				7,756.0	