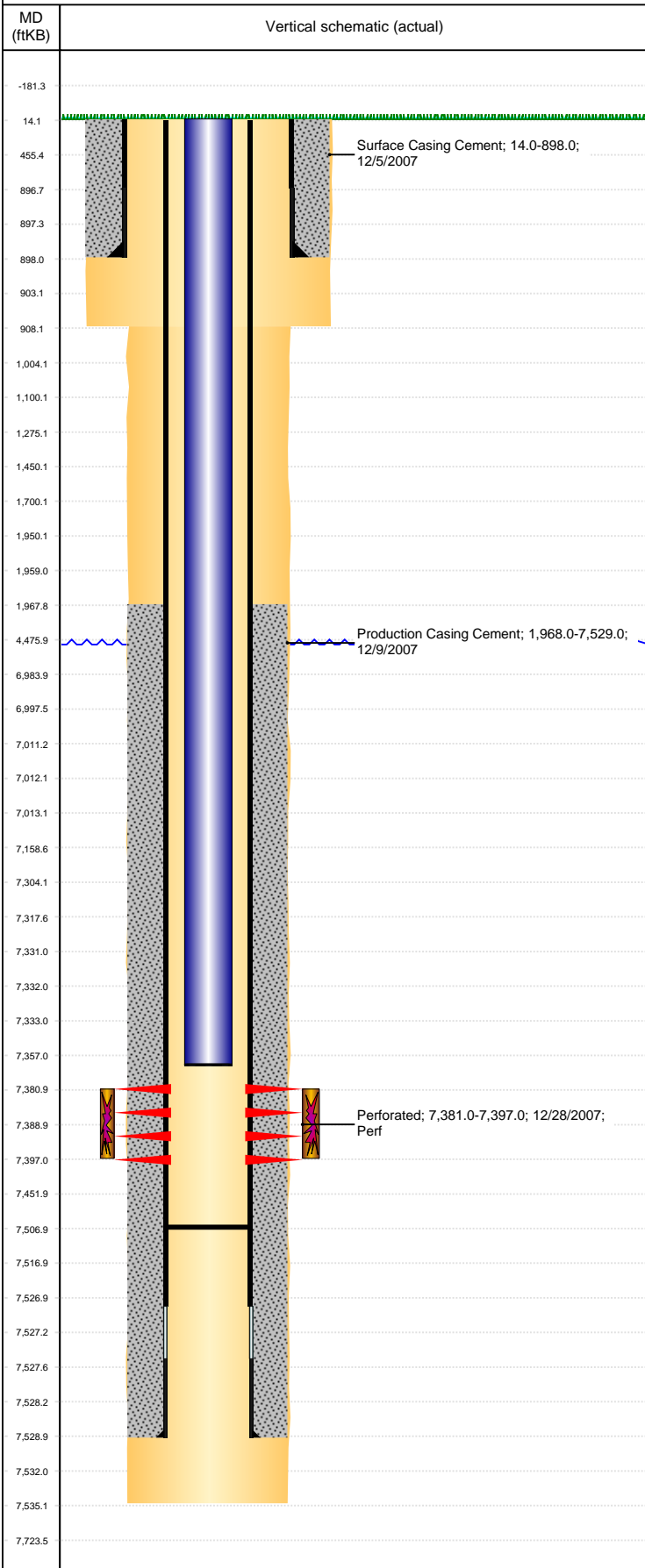


Well Name: MOSSBERG J30-23

VERTICAL, ORIGINAL HOLE, 6/12/2019 7:50:01 AM



Well Header									
API 05-123-26554		Business Unit DJ BASIN			District 15		Well Config VERTICAL		
KB - GL / MSL (ft... 14.00		Spud Date 12/4/2007		P & A Date		Well Production Status SI			SoRT No
Comment SURFACE & PROD CSG # JTS UNKNOWN. DISCREPANCY: PROD CSG GRADE - CMT RPT N-80, PATTERSON CSG TALLY SHEET I-80. STATE SHOWS SHUT IN SINCE JUNE 2017.									
Surface Location (Congressional)									
Qtr 3 SE	Qtr 4 SE	Section 30	Twnshp 5	Twnsh... N	Range 66	Rng E/... W	Actual Latitude (°) 40.36656794	Actual Longitude (°) -104.81681664	
Wellbore Sections									
Section Des			Size (in)			Act Top, MD (ftKB)		Act Btm, MD (ftKB)	
Surface			12 1/4			14		908	
Production			7 7/8			908		7,535	
Casing Strings									
Csg Des			Run Date		OD (in)	Wt/Len (lb/ft)	Grade	Top, MD (ftKB)	MD (ftKB)
Surface			12/5/2007		8 5/8	24.00	J-55	14.0	898.0
Production			12/9/2007		4 1/2	11.60	M-80	14.0	7,529.0
Cement									
Des					Start Date		Top (ftKB)		Btm (ftKB)
Surface Casing Cement					12/5/2007		14.0		898.0
Production Casing Cement					12/9/2007		1,968.0		7,529.0
Zone Statuses									
Zone Name		Status Date	Status	Fluid Type	Job			Prod Method	
CODELL		2/8/2010	PR	Water				Flowing	
CODELL		5/9/2017	SI						
Perforation Data									
Linked Zone			Bnch/Stg	Entered Shot Total	Top (ftKB)		Btm (ftKB)		Date
CODELL, ORIGINAL HOLE				64	7,381.00		7,397.00		12/28/2007
Stimulation Intervals									
Zone					Start Date		Top (ftKB)		Btm (ftKB)
CODELL, ORIGINAL HOLE					1/18/2008		7,381.0		7,397.0
Other In Hole									
Run Date		Des				OD (in)	Top (ftKB)		Btm (ftKB)
6/9/2016		Plunger Lift				1 7/8			
Logs									
Date		Type					Top, MD (ftKB)		Btm, MD (ftKB)
12/8/2007		Caliper/Comp.Density/Neutron/GR/SP/ML					2,590.0		7,517.0
12/8/2007		DIL/GR/SP/Caliper					898.0		7,537.0
12/26/2007		CEMENT BOND					1,830.0		7,505.0
12/28/2007		CBL/CCL/GR					898.0		7,537.0
Plug Back Total Depths									
Date		Type			Com				Depth (ftKB)
12/9/2007		FILL			Calculated PBTD				7,514.3
12/26/2007					DEPTH LOGGER ON CBL				7,507.0