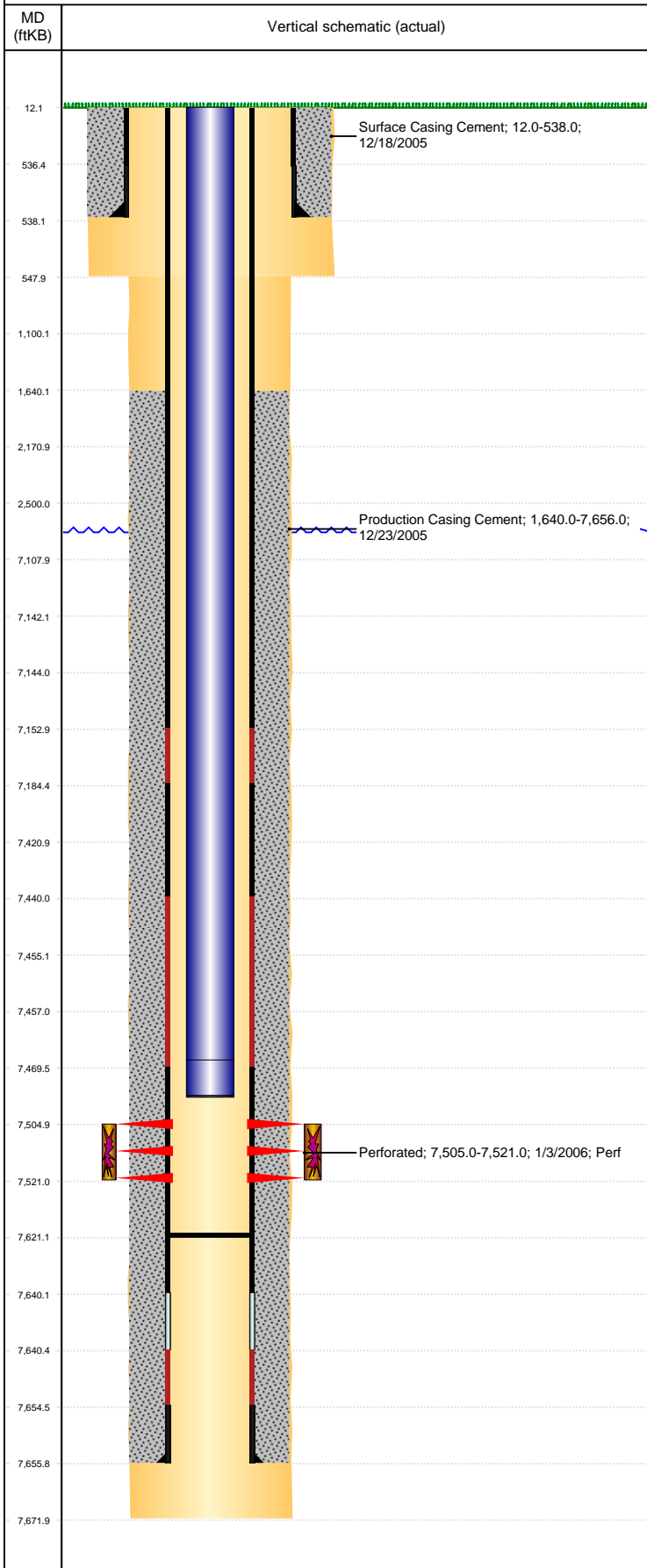


Well Name: KORI J19-25

VERTICAL, ORIGINAL HOLE, 6/12/2019 7:43:06 AM



Well Header									
API 05-123-23230			Business Unit DJ BASIN			District 15		Well Config VERTICAL	
KB - GL / MSL (ft... 12.00		Spud Date 12/18/2005		P & A Date		Well Production Status PR			SoRT No
Comment DISCREPANCY: SURFACE CSG SET DEPTH- STATE 542', DAILY RPTS 538', USED 538'. STATE SHOWS SHUT IN SINCE OCT 2016.									
Surface Location (Congressional)									
Qtr 3 SE	Qtr 4 SW	Section 19	Twnshp 5	Twnsh... N	Range 66	Rng E/... W	Actual Latitude (°) 40.38129709		Actual Longitude (°) -104.82714636
Wellbore Sections									
Section Des			Size (in)			Act Top, MD (ftKB)		Act Btm, MD (ftKB)	
SURFACE			12 1/4			12		548	
PRODUCTION			7 7/8			548		7,672	
Casing Strings									
Csg Des		Run Date		OD (in)	Wt/Len (lb/ft)	Grade	Top, MD (ftKB)	MD (ftKB)	
Surface		12/18/2005		8 5/8	24.00	J-55	12.0	538.0	
Production		12/23/2005		4 1/2	11.60	M-80	12.0	7,656.0	
Cement									
Des				Start Date		Top (ftKB)		Btm (ftKB)	
Surface Casing Cement				12/18/2005		12.0		538.0	
Production Casing Cement				12/23/2005		1,640.0		7,656.0	
Zone Statuses									
Zone Name		Status Date	Status	Fluid Type	Job			Prod Method	
CODELL		1/21/2006	PR	Oil				Flowing	
CODELL		2/2/2010	PR	Water				Flowing	
Perforation Data									
Linked Zone			Bnch/Stg	Entered Shot Total	Top (ftKB)		Btm (ftKB)		Date
CODELL, ORIGINAL HOLE				72	7,505.00		7,521.00		1/3/2006
Stimulation Intervals									
Zone				Start Date		Top (ftKB)		Btm (ftKB)	
CODELL, ORIGINAL HOLE				1/19/2006		7,505.0		7,521.0	
Other In Hole									
Run Date		Des				OD (in)	Top (ftKB)		Btm (ftKB)
Logs									
Date		Type				Top, MD (ftKB)		Btm, MD (ftKB)	
12/22/2005		COMPENSATED DENSITY				2,850.0		7,649.0	
12/22/2005		INDUCTION				550.0		7,669.0	
12/30/2005		CEMENT BOND				1,500.0		7,620.0	
Plug Back Total Depths									
Date		Type		Com				Depth (ftKB)	
12/23/2005		FLOAT COLLAR		TOP OF LATCH DOWN BAFFLE				7,640.0	
12/30/2005		FILL		DEPTH LOGGER ON CBL				7,621.0	