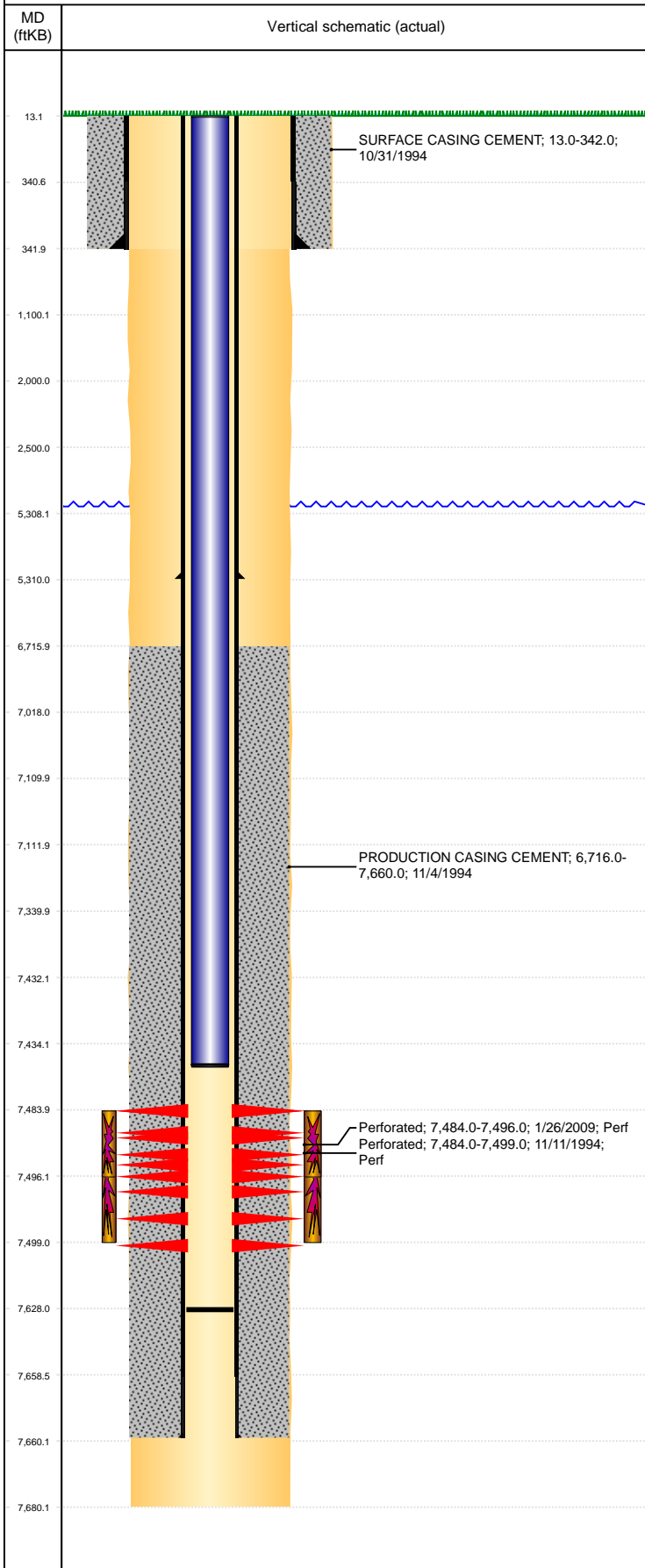


Well Name: KORJ J19-16

VERTICAL, ORIGINAL HOLE, 6/12/2019 7:35:49 AM



Well Header									
API 05-123-17999		Business Unit DJ BASIN			District 15		Well Config VERTICAL		
KB - GL / MSL (ft... 13.00		Spud Date 10/31/1994		P & A Date		Well Production Status SI			SoRT No
Comment									
Surface Location (Congressional)									
Qtr 3 SE	Qtr 4 SE	Section 19	Twnshp 5	Twnsh... N	Range 66	Rng E/... W	Actual Latitude (°) 40.37959694	Actual Longitude (°) -104.81525555	
Wellbore Sections									
Section Des			Size (in)			Act Top, MD (ftKB)		Act Btm, MD (ftKB)	
SURFACE			12 1/4			13		342	
PRODUCTION			7 7/8			342		7,680	
Casing Strings									
Csg Des			Run Date		OD (in)	Wt/Len (lb/ft)	Grade	Top, MD (ftKB)	MD (ftKB)
Surface Casing			10/31/1994		8 5/8	24.00		13.0	342.0
Production			1/17/2001		2 7/8	6.50	N-80	13.0	5,310.0
Production			11/4/1994		2 7/8	6.50	N-80	13.0	7,660.0
Cement									
Des					Start Date		Top (ftKB)		Btm (ftKB)
SURFACE CASING CEMENT					10/31/1994		13.0		342.0
PRODUCTION CASING CEMENT					11/4/1994		6,716.0		7,660.0
Zone Statuses									
Zone Name		Status Date	Status	Fluid Type	Job			Prod Method	
CODELL		2/2/2010	PR	Water				Flowing	
CODELL		9/22/2016	SI						
Perforation Data									
Linked Zone			Bnch/Stg	Entered Shot Total	Top (ftKB)		Btm (ftKB)		Date
CODELL, ORIGINAL HOLE				61	7,484.00		7,499.00		11/11/1994
CODELL, ORIGINAL HOLE				48	7,484.00		7,496.00		1/26/2009
Stimulation Intervals									
Zone				Start Date		Top (ftKB)		Btm (ftKB)	
CODELL, ORIGINAL HOLE				11/15/1994		7,484.0		7,499.0	
CODELL, ORIGINAL HOLE				2/19/2009		7,484.0		7,496.0	
Other In Hole									
Run Date		Des				OD (in)	Top (ftKB)		Btm (ftKB)
Logs									
Date		Type				Top, MD (ftKB)		Btm, MD (ftKB)	
11/3/1994		COMPENSATED DENSITY				6,600.0		7,697.0	
11/3/1994		INDUCTION				6,600.0		7,697.0	
11/10/1994		CEMENT BOND				6,550.0		7,573.0	
Plug Back Total Depths									
Date		Type		Com					Depth (ftKB)
11/4/1994		LATCH DOWN COLLAR							7,656.0
2/24/2009		FILL							7,628.0