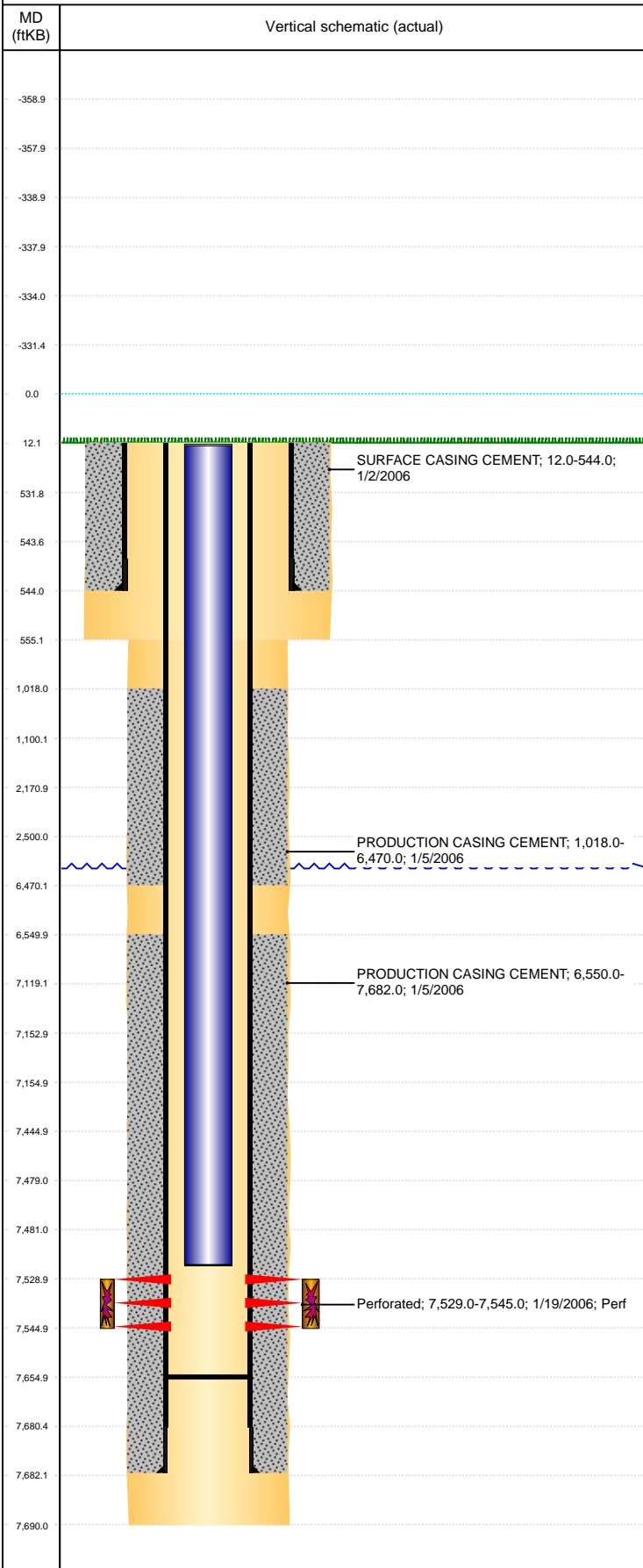


**Well Name: KORI J19-11**

VERTICAL, ORIGINAL HOLE, 6/11/2019 4:43:49 PM



Well Header									
API 05-123-22718		Business Unit DJ BASIN			District 15		Well Config VERTICAL		
KB - GL / MSL (ft... 12.00		Spud Date 1/1/2006		P & A Date		Well Production Status SI		SoRT No	
Comment									
Surface Location (Congressional)									
Qtr 3 NE	Qtr 4 SW	Section 19	Twshp 5	Twshsh... N	Range 66	Rng E/... W	Actual Latitude (°) 40.38371447	Actual Longitude (°) -104.82541700	
Wellbore Sections									
Section Des			Size (in)		Act Top, MD (ftKB)		Act Btm, MD (ftKB)		
SURFACE			12 1/4		12		555		
PRODUCTION			7 7/8		555		7,690		
Casing Strings									
Csg Des			Run Date	OD (in)	Wt/Len (lb/ft)	Grade	Top, MD (ftKB)	MD (ftKB)	
Surface			1/2/2006	8 5/8	24.00	J-55	12.0	544.0	
PRODUCTION			1/5/2006	4 1/2	11.60	M-80	12.0	7,682.0	
Cement									
Des				Start Date		Top (ftKB)		Btm (ftKB)	
SURFACE CASING CEMENT				1/2/2006		12.0		544.0	
PRODUCTION CASING CEMENT				1/5/2006		1,018.0		6,470.0	
PRODUCTION CASING CEMENT				1/5/2006		6,550.0		7,682.0	
Zone Statuses									
Zone Name		Status Date	Status	Fluid Type	Job			Prod Method	
CODELL		2/2/2010	PR	Water				Flowing	
CODELL		9/22/2016	SI						
Perforation Data									
Linked Zone			Bnch/Stg	Entered Shot Total	Top (ftKB)	Btm (ftKB)	Date		
CODELL, ORIGINAL HOLE				64	7,529.00	7,545.00	1/19/2006		
Stimulation Intervals									
Zone				Start Date		Top (ftKB)		Btm (ftKB)	
CODELL, ORIGINAL HOLE				1/30/2006		7,529.0		7,545.0	
Other In Hole									
Run Date		Des				OD (in)	Top (ftKB)	Btm (ftKB)	
8/23/2015		Plunger Lift				1 7/8			
Logs									
Date		Type				Top, MD (ftKB)	Btm, MD (ftKB)		
1/5/2005		COMPENSATED DENSITY				2,750.0	7,662.0		
1/5/2005		INDUCTION				544.0	7,682.0		
1/16/2006		CBL/CCL/GR				900.0	7,630.0		
Plug Back Total Depths									
Date		Type		Com				Depth (ftKB)	
1/5/2006		GUIDE SHOE						7,665.0	
2/25/2010		FILL						7,655.0	