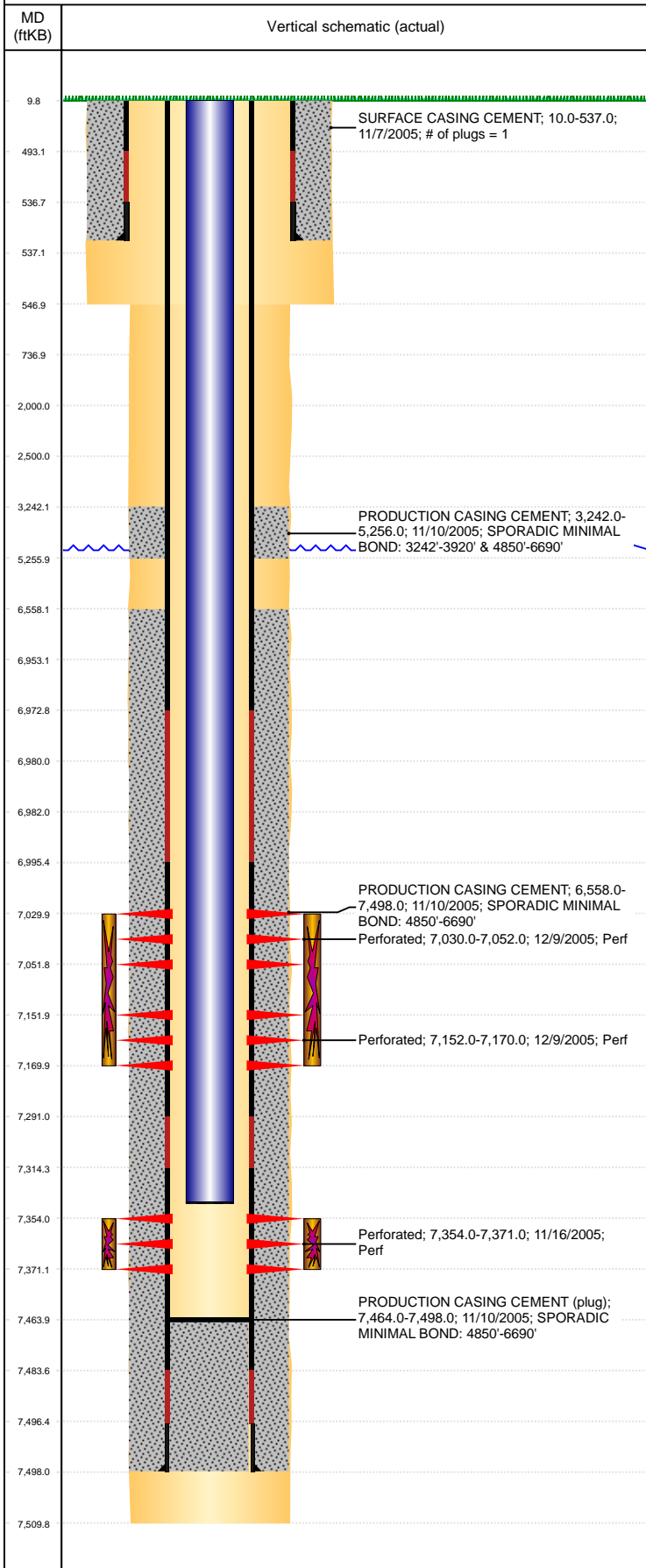


Well Name: BERNHARDT J31-19

VERTICAL, ORIGINAL HOLE, 6/11/2019 7:41:24 AM



Well Header									
API 05-123-23226			Business Unit DJ BASIN			District 15		Well Config VERTICAL	
KB - GL / MSL (ft... 10.00		Spud Date 11/6/2005		P & A Date		Well Production Status SI			SoRT No
Comment poor Sx bond									
Surface Location (Congressional)									
Qtr 3 SE	Qtr 4 NW	Section 31	Twonshp 5	Twonsh... N	Range 66	Rng E/... W	Actual Latitude (°) 40.35945363	Actual Longitude (°) -104.82684182	
Wellbore Sections									
Section Des			Size (in)			Act Top, MD (ftKB)		Act Btm, MD (ftKB)	
SURFACE			12 1/4			10		547	
PRODUCTION			7 7/8			547		7,510	
Casing Strings									
Csg Des			Run Date		OD (in)	Wt/Len (lb/ft)	Grade	Top, MD (ftKB)	MD (ftKB)
Surface			11/7/2005		8 5/8	24.00	J-55	9.8	537.0
Production			11/10/2005		4 1/2	11.60	M-80	10.0	7,498.0
Cement									
Des					Start Date		Top (ftKB)		Btm (ftKB)
SURFACE CASING CEMENT					11/7/2005		10.0		537.0
PRODUCTION CASING CEMENT					11/10/2005		3,242.0		5,256.0
PRODUCTION CASING CEMENT					11/10/2005		6,558.0		7,498.0
Zone Statuses									
Zone Name		Status Date	Status	Fluid Type	Job			Prod Method	
CODELL		12/11/2005	PR	Water	DRILLING/COMPLETION - ORIGINAL, 11/1/2005...			Flowing	
CODELL		2/9/2010	PR						
NIOBRARA		2/9/2010	PR						
NIOBRARA		6/13/2017	SI						
Perforation Data									
Linked Zone			Bnch/Stg	Entered Shot Total	Top (ftKB)		Btm (ftKB)		Date
NIOBRARA, ORIGINAL HOLE			A	132	7,030.00		7,052.00		12/9/2005
NIOBRARA, ORIGINAL HOLE			B	108	7,152.00		7,170.00		12/9/2005
CODELL, ORIGINAL HOLE				68	7,354.00		7,371.00		11/16/2005
Stimulation Intervals									
Zone					Start Date		Top (ftKB)		Btm (ftKB)
NIOBRARA, ORIGINAL HOLE					12/9/2005		7,030.0		7,170.0
CODELL, ORIGINAL HOLE					12/9/2005		7,354.0		7,371.0
Other In Hole									
Run Date		Des				OD (in)	Top (ftKB)	Btm (ftKB)	
Logs									
Date		Type					Top, MD (ftKB)		Btm, MD (ftKB)
11/10/2005		COMPENSATED DENSITY					3,000.0		7,513.0
11/10/2005		INDUCTION					537.0		7,513.0
11/16/2005		CBL/CCL/GR					3,100.0		7,464.0
Plug Back Total Depths									
Date		Type			Com				Depth (ftKB)
11/10/2005		LATCH DOWN COLLAR			LATCH DOWN COLLAR				7,484.0
11/16/2005		FILL			DEPTH LOGGER				7,464.0