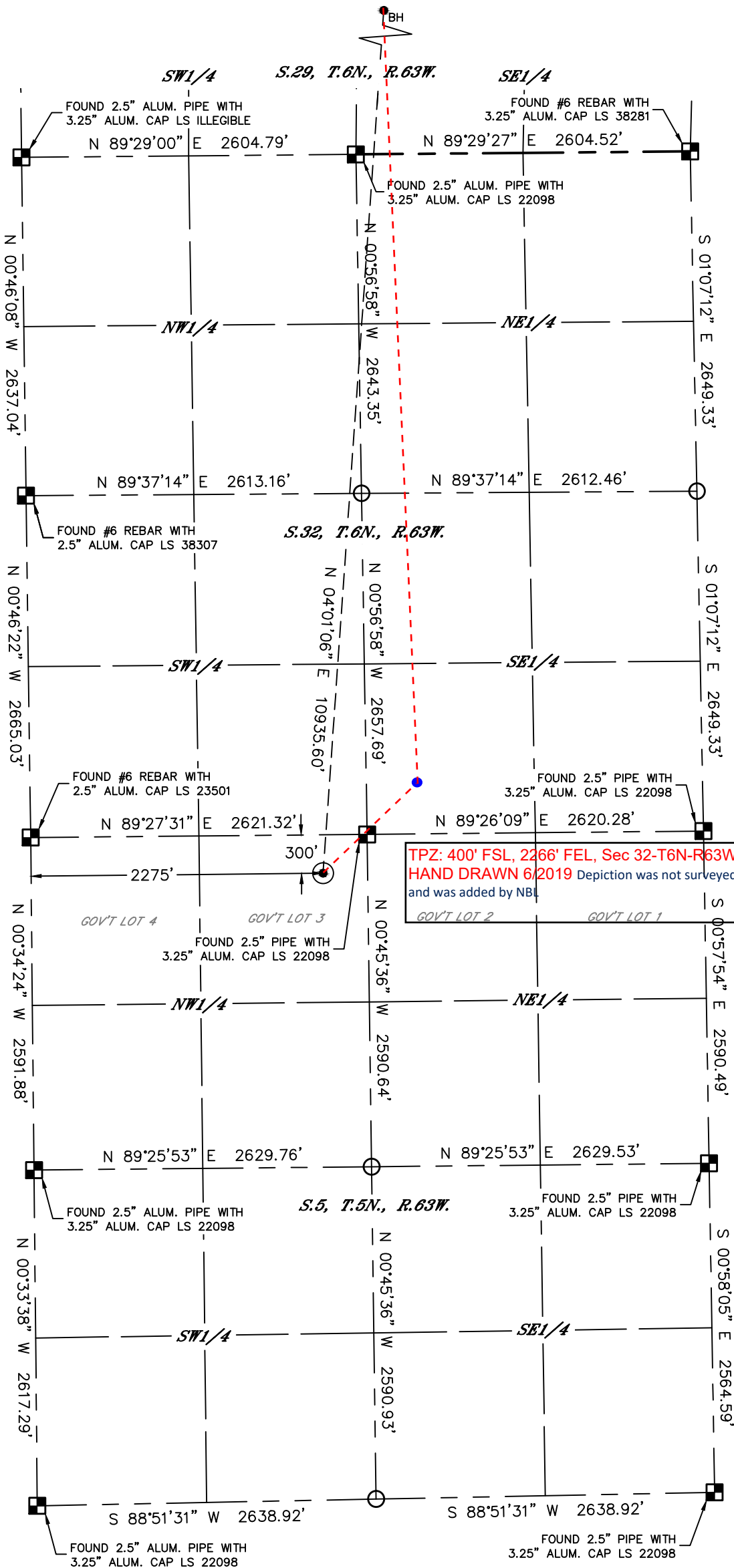




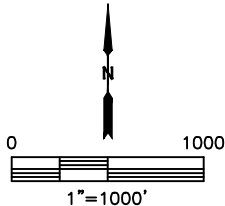
Lat40°, Inc. 6250 W. 10th Street, Unit 2, Greeley, CO 970-515-5294

WELL LOCATION CERTIFICATE  
WELLS RANCH STATE AA32-745

SECTION: 5  
TOWNSHIP: 5N  
RANGE: 63W  
6TH. P.M.  
WELD COUNTY, CO



**APPROVED**  
By Cory at 3:21 pm, Jun 05, 2019

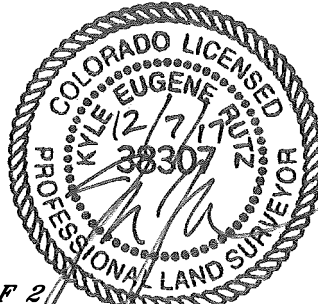


CLIENT: NOBLE ENERGY, INC.				LANDMAN: CORY NEIGHBORS			
INSTRUMENT OPERATOR: JAKE STILLE				SURVEY DATE: 11/06/2017		SURFACE USE: RANGELAND	
SHL FOOTAGE	SHL LAT°	SHL LONG°	SHL PDOP	SHL ELEV (FT.)	SHL 1/4/1/4	SHL S-T-R	
300	FNL	2275	FWL	40.43488	-104.46204	3.0	4685
							NENW
							5-5-63

BHL FOOTAGE	BHL LAT°	BHL LONG°	BHL S-T-R
0	FNL	2240	FEL
			40.46479
			-104.45882
			29-6-63

NOTE:  
1) Bearings shown are Grid Bearings of the Colorado State Plane Coordinate System, North Zone, North American Datum 1983. The lineal dimensions as contained herein are based upon the "U.S. Survey Foot."  
2) Distances to section lines measured at 90 degrees from said section lines.  
3) Ground elevations are based on an observed GPS elevation (NAVD 1988 DATUM).  
4) Latitude and Longitude shown are (NAD 83 DATUM).  
5) IMPROVEMENTS: See LOCATION DRAWING for all visible improvements within 500' of oil and gas location.  
6) This map does not represent a boundary survey.

- LEGEND
- = ALIQUOT MONUMENT AS DESCRIBED
  - = CALCULATED POSITION
  - = SURFACE HOLE LOCATION (SHL)
  - ▲ = ENTRY POINT LOCATION (EP)
  - = BOTTOM HOLE LOCATION (BHL)
  - ⊙ = EXISTING WELL
  - ⊙ = ABANDONED WELL

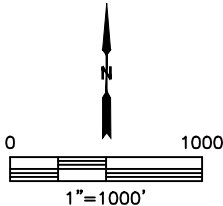
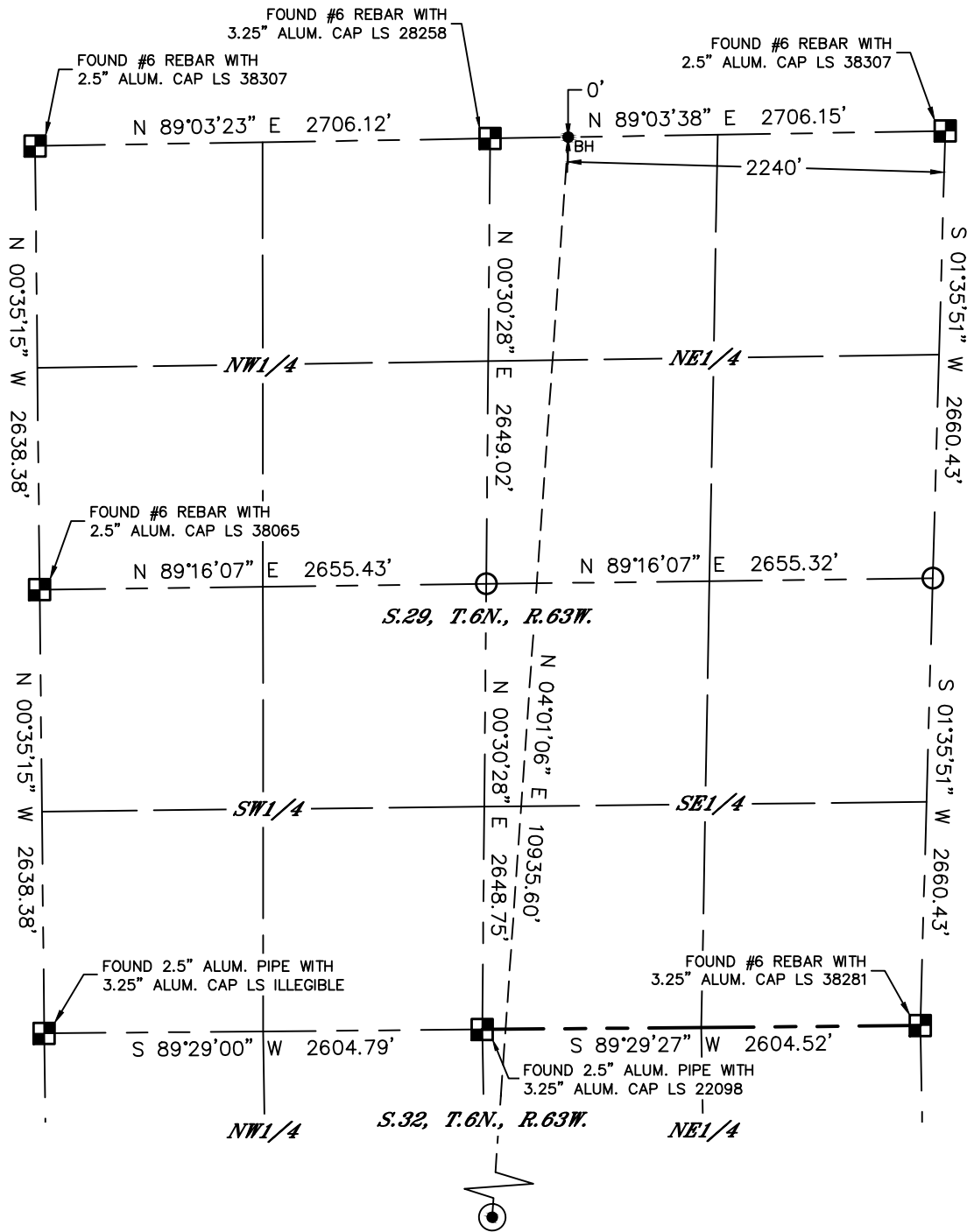


**SHEET 1 OF 2**  
Kyle E. Rutz—On behalf of Lat40°, Inc.  
Colorado Licensed Professional Land Surveyor No. 38307  
DATE: 12/7/2017  
PROJECT#: 2017094



WELL LOCATION CERTIFICATE  
WELLS RANCH STATE AA32-745

SECTION: 5  
TOWNSHIP: 5N  
RANGE: 63W  
6TH. P.M.  
WELD COUNTY, CO



- LEGEND
- = ALIQUOT MONUMENT AS DESCRIBED
  - = CALCULATED POSITION
  - ⊙ = SURFACE HOLE LOCATION (SHL)
  - ▲ = ENTRY POINT LOCATION (EP)
  - = BOTTOM HOLE LOCATION (BHL)
  - ⊕ = EXISTING WELL
  - ⊖ = ABANDONED WELL

