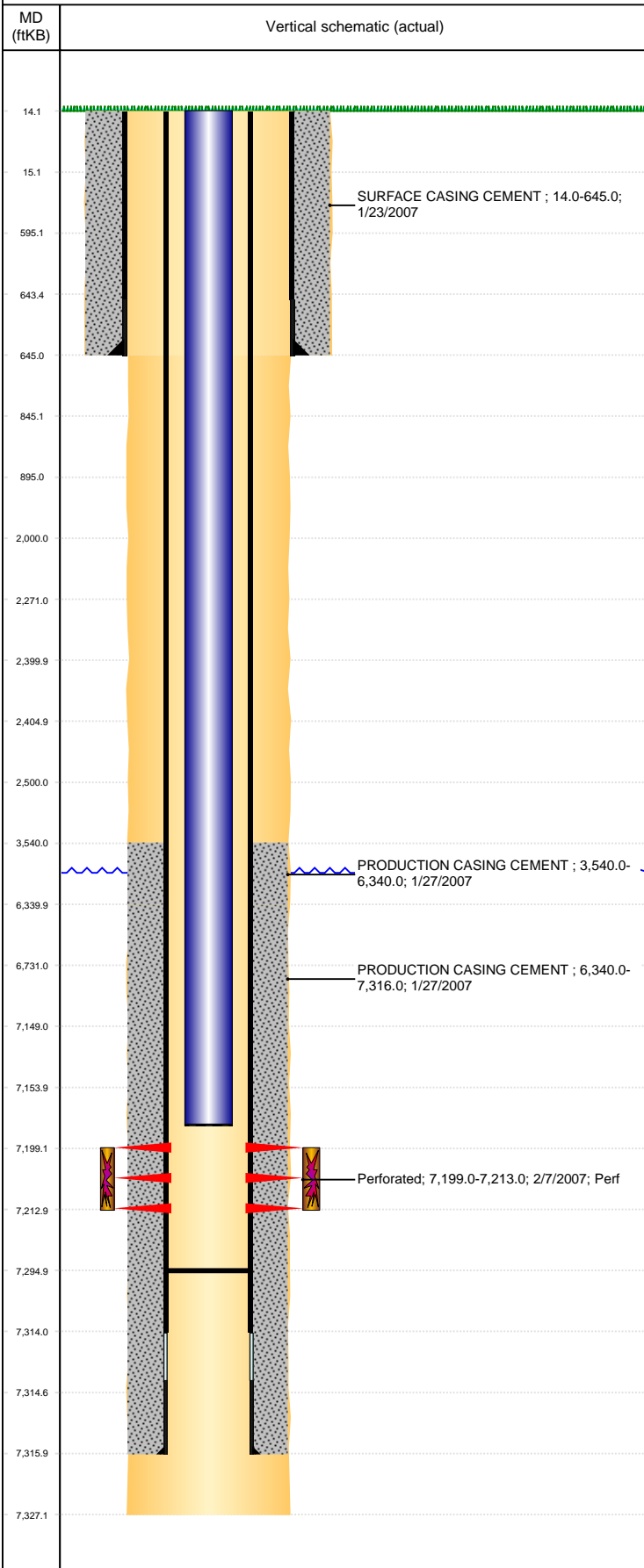


Well Name: HARPER USX EE27-17

VERTICAL, ORIGINAL HOLE, 6/4/2019 3:24:03 PM



Well Header									
API 05-123-24564		Business Unit DJ BASIN			District 15		Well Config VERTICAL		
KB - GL / MSL (ft... 14.00		Spud Date 1/22/2007		P & A Date		Well Production Status PR			SoRT No
Comment DISCREPANCY:									
Surface Location (Congressional)									
Qtr 3 SE	Qtr 4 NE	Section 27	Twنشp 7	Twنش... N	Range 65	Rng E/... W	Actual Latitude (°) 40.54974528	Actual Longitude (°) -104.64441148	
Wellbore Sections									
Section Des			Size (in)			Act Top, MD (ftKB)		Act Btm, MD (ftKB)	
SURFACE			12 1/4			14		645	
PRODUCTION			7 7/8			645		7,327	
Casing Strings									
Csg Des			Run Date		OD (in)	Wt/Len (lb/ft)	Grade	Top, MD (ftKB)	MD (ftKB)
Surface			1/23/2007		8 5/8	24.00	J-55	14.0	645.0
Production			1/26/2007		4 1/2	11.60	M-80	14.0	7,316.0
Cement									
Des					Start Date		Top (ftKB)		Btm (ftKB)
SURFACE CASING CEMENT					1/23/2007		14.0		645.0
PRODUCTION CASING CEMENT					1/27/2007		3,540.0		6,340.0
PRODUCTION CASING CEMENT					1/27/2007		6,340.0		7,316.0
Zone Statuses									
Zone Name		Status Date	Status	Fluid Type	Job			Prod Method	
CODELL		3/17/2007	PR		DRILLING/COMPLETION - ORIGINAL, 1/22/2007...				
Perforation Data									
Linked Zone			Bnch/Stg	Entered Shot Total	Top (ftKB)		Btm (ftKB)		Date
CODELL, ORIGINAL HOLE				56	7,199.00		7,213.00		2/7/2007
Stimulation Intervals									
Zone				Start Date		Top (ftKB)		Btm (ftKB)	
				2/23/2007		7,199.0		7,213.0	
Other In Hole									
Run Date		Des				OD (in)	Top (ftKB)	Btm (ftKB)	
Logs									
Date		Type				Top, MD (ftKB)		Btm, MD (ftKB)	
1/26/2007		COMPENSATED DENSITY				2,500.0		7,302.0	
1/26/2007		INDUCTION				633.0		7,322.0	
1/31/2007		CBL/CCL/GR				3,350.0		7,292.0	
6/25/2018		GYRO				14.0		7,100.0	
Plug Back Total Depths									
Date		Type		Com				Depth (ftKB)	
1/26/2007		FLOAT SHOE		FLOAT SHOE				7,315.0	
1/31/2007		FILL		DEPTH LOGGER FROM CBL				7,295.0	