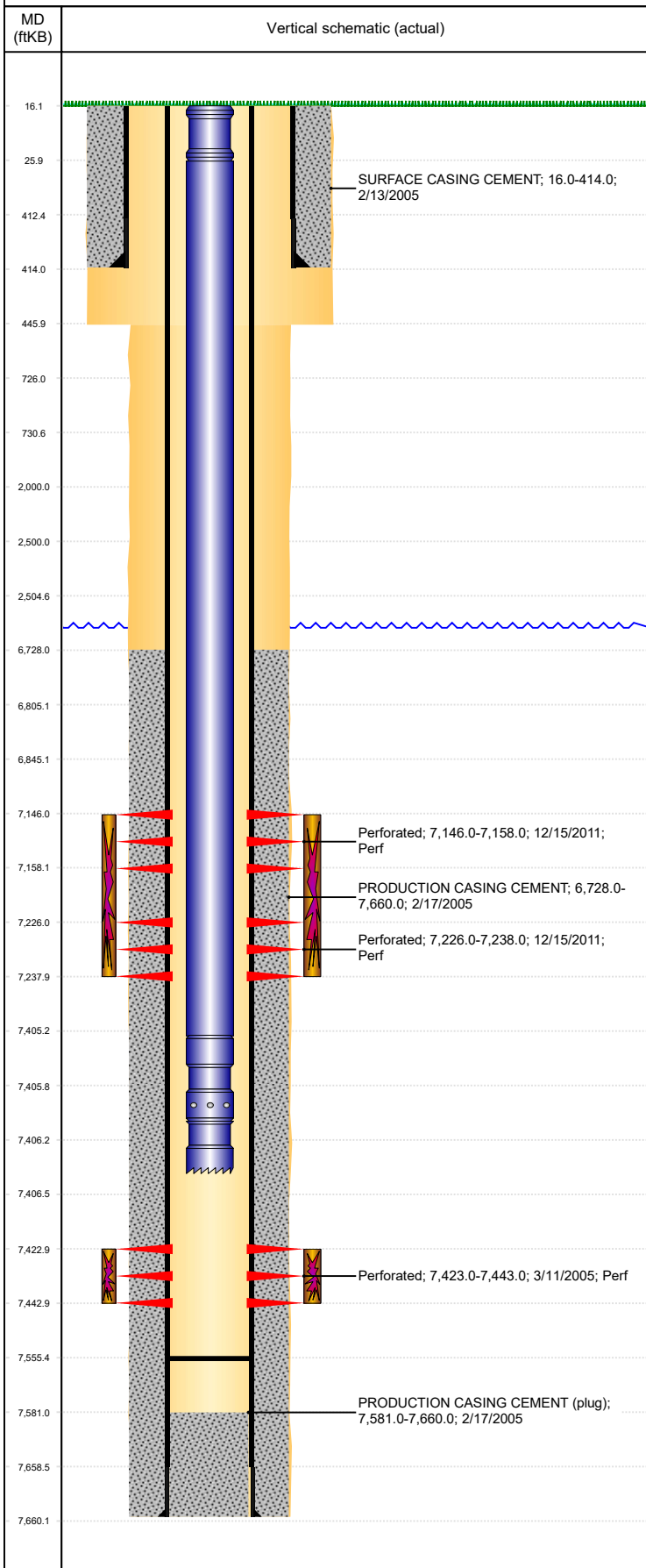


Well Name: BOOTH N25-25

VERTICAL, ORIGINAL HOLE, 5/29/2019 4:40:10 PM



Well Header									
API 05-123-22706		Business Unit DJ BASIN		District 15		Well Config VERTICAL			
KB - GL / MSL (ft... 16.00		Spud Date 2/12/2005		P & A Date		Well Production Status SI			SoRT No
Comment RESPECT LAND OWNERS REQUESTS KEEP ELECTRIC FENCES ATTACHED.									
Surface Location (Congressional)									
Qtr 3 NW	Qtr 4 SW	Section 25	Twnshp 5	Twnsh... N	Range 67	Rng E /... W	Actual Latitude (°) 40.36709912	Actual Longitude (°) -104.84652754	
Wellbore Sections									
Section Des			Size (in)			Act Top, MD (ftKB)		Act Btm, MD (ftKB)	
SURFACE			12 1/4			16		446	
PRODUCTION			7 7/8			446		7,660	
Casing Strings									
Csg Des			Run Date		OD (in)	Wt/Len (lb/ft)	Grade	Top, MD (ftKB)	MD (ftKB)
Surface			2/13/2005		8 5/8	24.00		16.0	414.0
Production			2/17/2005		4 1/2	11.60	M-80	16.0	7,660.0
Cement									
Des					Start Date		Top (ftKB)		Btm (ftKB)
SURFACE CASING CEMENT					2/13/2005		16.0		414.0
PRODUCTION CASING CEMENT					2/17/2005		6,728.0		7,660.0
Zone Statuses									
Zone Name	Status Date	Status	Fluid Type	Job				Prod Method	
CODELL	3/12/2012	PR		RE-FRAC & RECOMPLETE, 12/1/2011 09:30					
CODELL	10/27/2016	SI							
NIOBRARA	12/19/2011	PR		RE-FRAC & RECOMPLETE, 12/1/2011 09:30					
Perforation Data									
Linked Zone		Bnch/Stg	Entered Shot Total	Top (ftKB)		Btm (ftKB)		Date	
NIOBRARA, ORIGINAL HOLE		A	24	7,146.00		7,158.00		12/15/2011	
NIOBRARA, ORIGINAL HOLE		B	24	7,226.00		7,238.00		12/15/2011	
CODELL, ORIGINAL HOLE			80	7,423.00		7,443.00		3/11/2005	
Stimulation Intervals									
Zone				Start Date		Top (ftKB)		Btm (ftKB)	
NIOBRARA, ORIGINAL HOLE				12/15/2011		7,146.0		7,238.0	
				12/15/2011		7,146.0		6,805.0	
CODELL, ORIGINAL HOLE				3/29/2005		7,423.0		7,443.0	
CODELL, ORIGINAL HOLE				12/15/2011		7,423.0		7,443.0	
				12/15/2011		7,423.0		6,805.0	
Other In Hole									
Run Date		Des				OD (in)	Top (ftKB)	Btm (ftKB)	
Logs									
Date		Type				Top, MD (ftKB)		Btm, MD (ftKB)	
2/16/2005		COMPENSATED DENSITY				3,000.0		7,637.0	
2/16/2005		INDUCTION				414.0		7,657.0	
3/9/2005		CBL/CCL/GR				6,540.0		7,578.0	
11/15/2013		GYRO				16.0		7,300.0	
Plug Back Total Depths									
Date		Type		Com				Depth (ftKB)	
12/2/2011		FILL		DID NOT USE P/S DUE TO HAVING 112.49' RAT HOLE				7,555.5	
3/9/2012		FILL		CLEANED OUT CFTP W/P-S.C/O DN TO 7555.49' KB.				7,555.5	