

Mud Properties Record

Date / Time	Run No.	Depth (ft)	Mud Type	Density (ppg)	Viscosity (cP)	pH	Fluid Loss (cm3)	Oil / Water	Source	Total Chlorides (ppm)	K+ (%)
2019-04-04 13:00	1	2393.00	Oil Based Mud	9.5	17	N/A	16.0	71/18	Active Pit	24295	0.00
2019-04-05 04:00	1	6444.00	Oil Based Mud	9.2	12	N/A	17.0	72/18	Active Pit	24295	0.00
2019-04-05 15:00	1	8305.00	Oil Based Mud	9.4	13	N/A	18.0	71/17	Active Pit	25267	0.00
2019-04-06 04:00	1	12338.00	Oil Based Mud	9.6	15	N/A	17.0	71/16	Active Pit	22352	0.00
2019-04-06 15:00	1	15580.00	Oil Based Mud	9.8	18	N/A	19.0	72/15	Active Pit	21380	0.00

Equipment and Service Data

Run No.	Tool	Serial Number	Measurement	Sensor Offset (ft)	Bit Offset (ft)	Max O.D. (in)	Min I.D. (in)
1	AutoTrak Curve Steering Unit	12124244	Near Bit Inclination	5.93	6.73	7.375	4.330
1	AutoTrak Curve Steering Unit	12124244	Near Bit VSS	5.93	6.73	7.375	4.330
1	AutoTrak Curve MWD	12332940	Gamma (single)	2.75	12.90	6.875	3.250
1	AutoTrak Curve MWD	12332940	Directional (mag)	12.27	22.42	6.875	3.250

Service and Tool Mnemonics

Mnemonic	Name	Description
ATC SU	AutoTrak Curve SU	Auto Trak Curve Steering Unit
ATC MWD	AutoTrak Curve MWD	Auto Trak Curve MWD
ATC LCPM	AutoTrak Curve LCPM	Auto Trak Curve LCPM

Comments

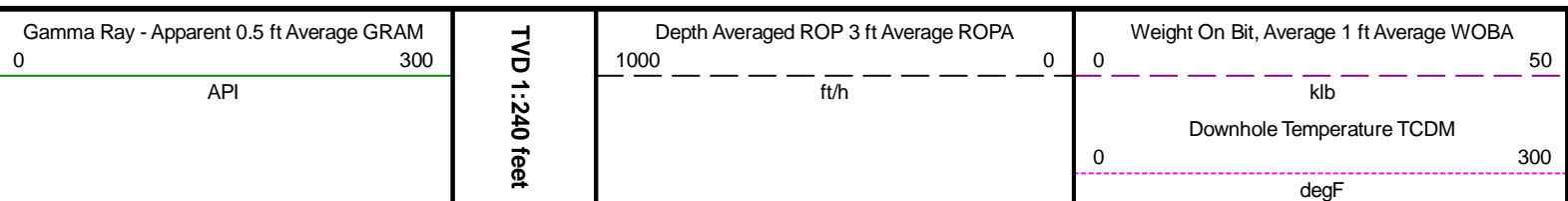
- 1 Depth measurements were obtained from a depth control system not supplied or operated by Baker Hughes. Due to the lack of control by Baker Hughes, depth calibrations and measurements could not be independently verified.
- 2 Baker Hughes LWD run 1 utilized a 6.75 inch NaviGamma service (Directional and Gamma Ray) behind a 8.5 inch bit and rotary steerable assembly from 1973 to 17810 feet MD (1973 to 6844 feet TVD).
- 3 The Gamma Ray Apparent (GRAM) data is presented 0 to 300 API, per the customer's request.

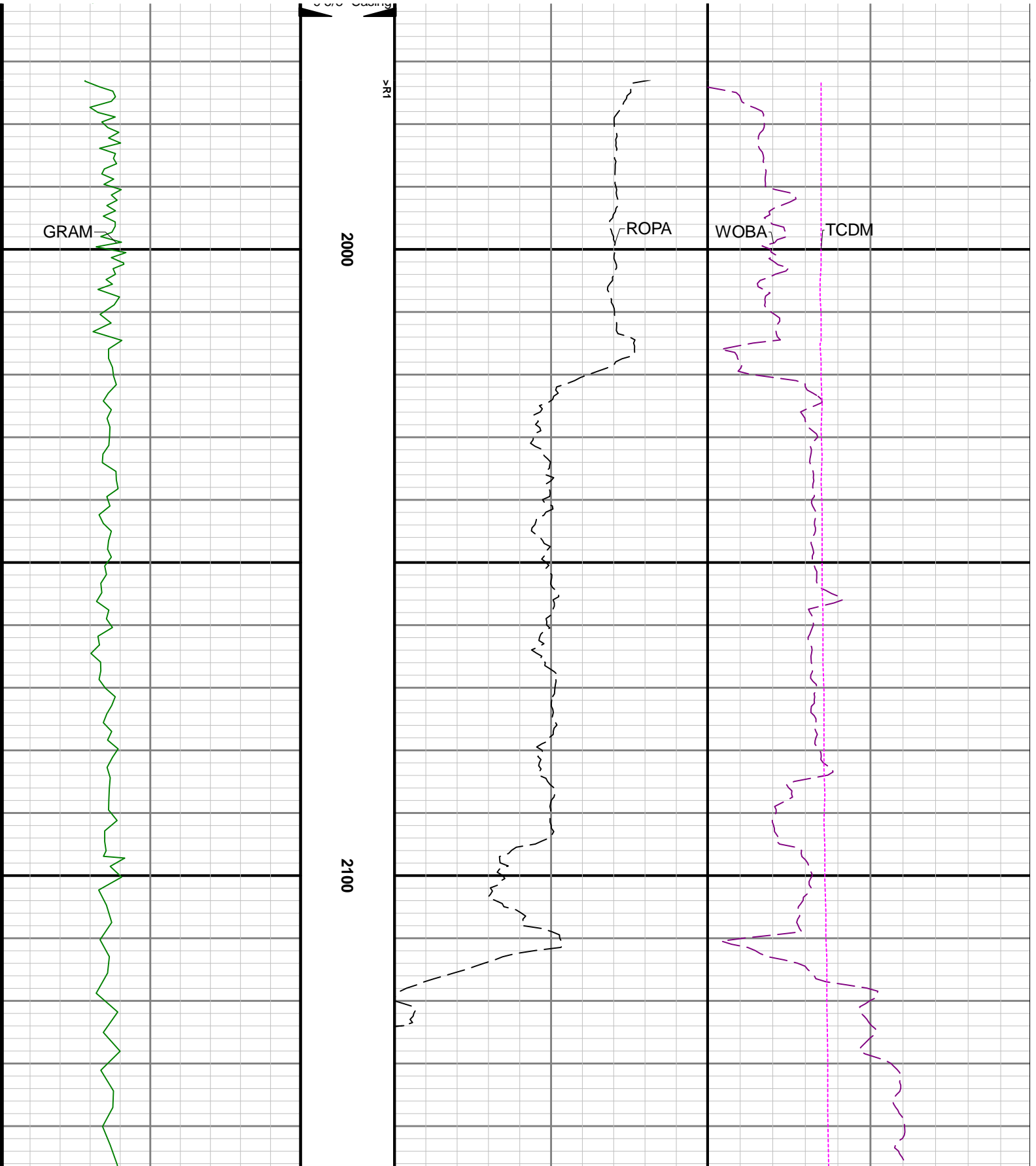
Remarks

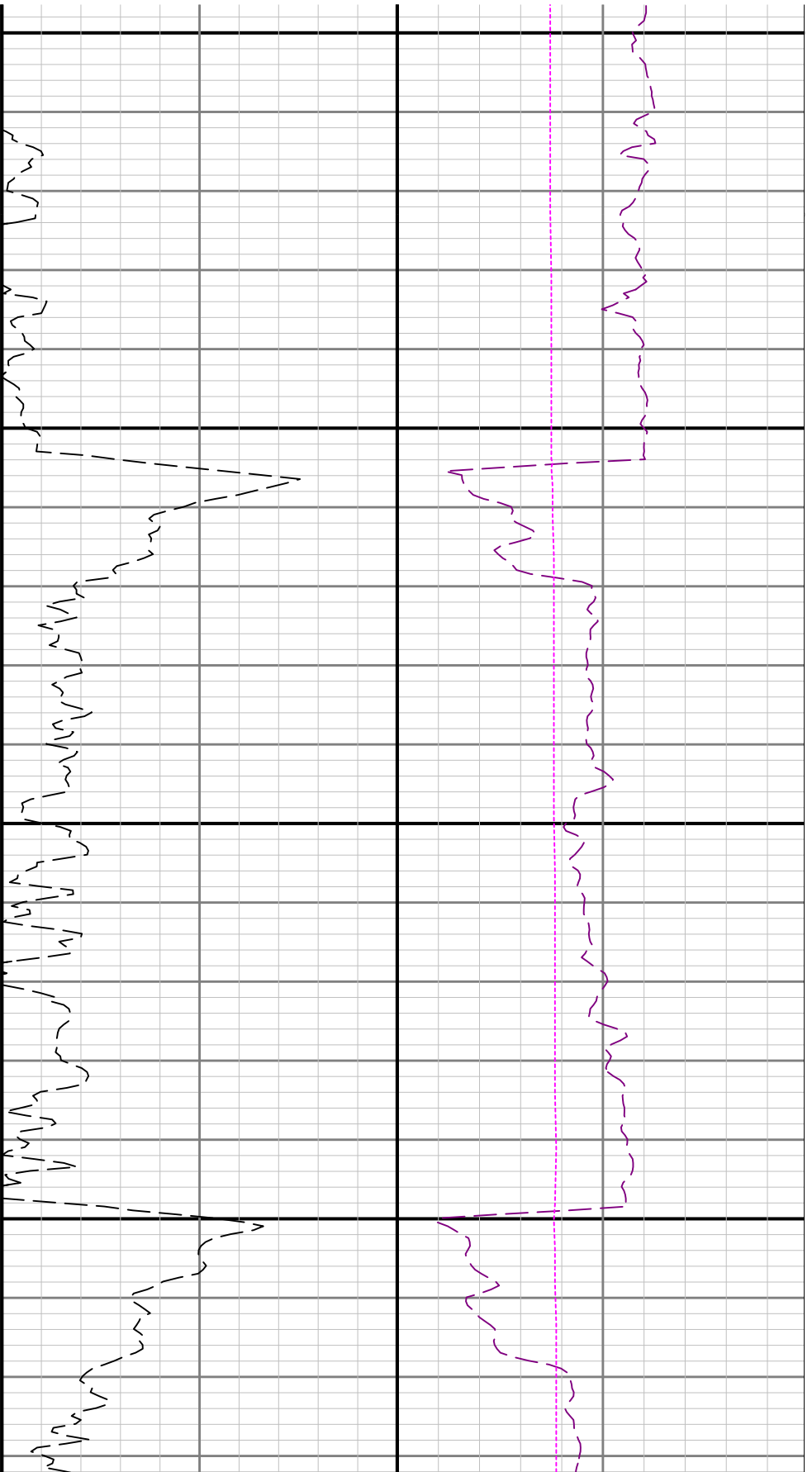
Number	Depth (ft)	Hole Section (in)	Run No.	Remark
1	3624.00	8.500	1	The interval from 3556 to 3611 feet MD (3522 to 3573 feet TVD) has a gap in gamma ray and gamma ray time since drilled due to the LWD assembly failing to power on while drilling ahead.
2	6876.00	8.500	1	The interval from 6854 to 6865 feet MD (6448 to 6458 feet TVD) has a gap in gamma ray and gamma ray time since drilled due to the LWD assembly failing to power on after an attempted downlink.

Curve Mnemonics

Presented Curves	Description	Units
ROPA	Depth Averaged ROP 3 ft Average	ft/h
WOBA	Weight On Bit, Average 1 ft Average	klb
GRAM	Gamma Ray - Apparent - Memory 0.5 ft Average	API
TCDM	Directional Real-Time Survey Temperature	degF

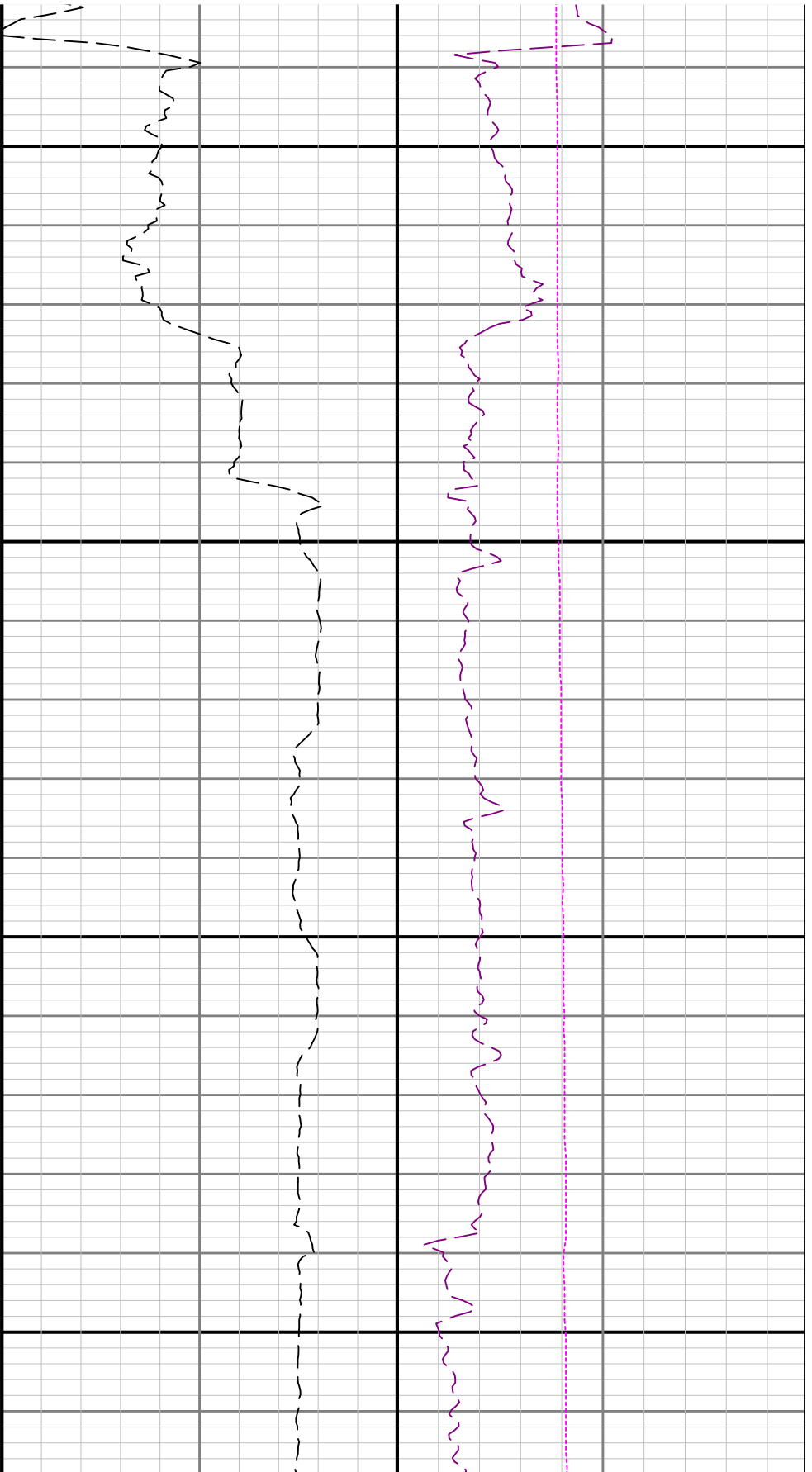
[illegible]





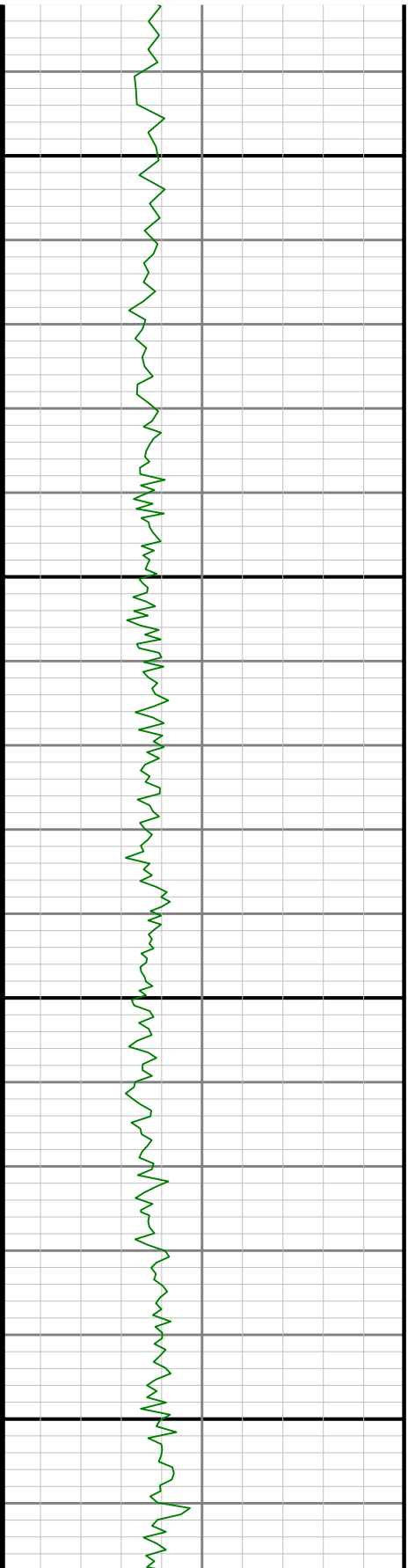
2200

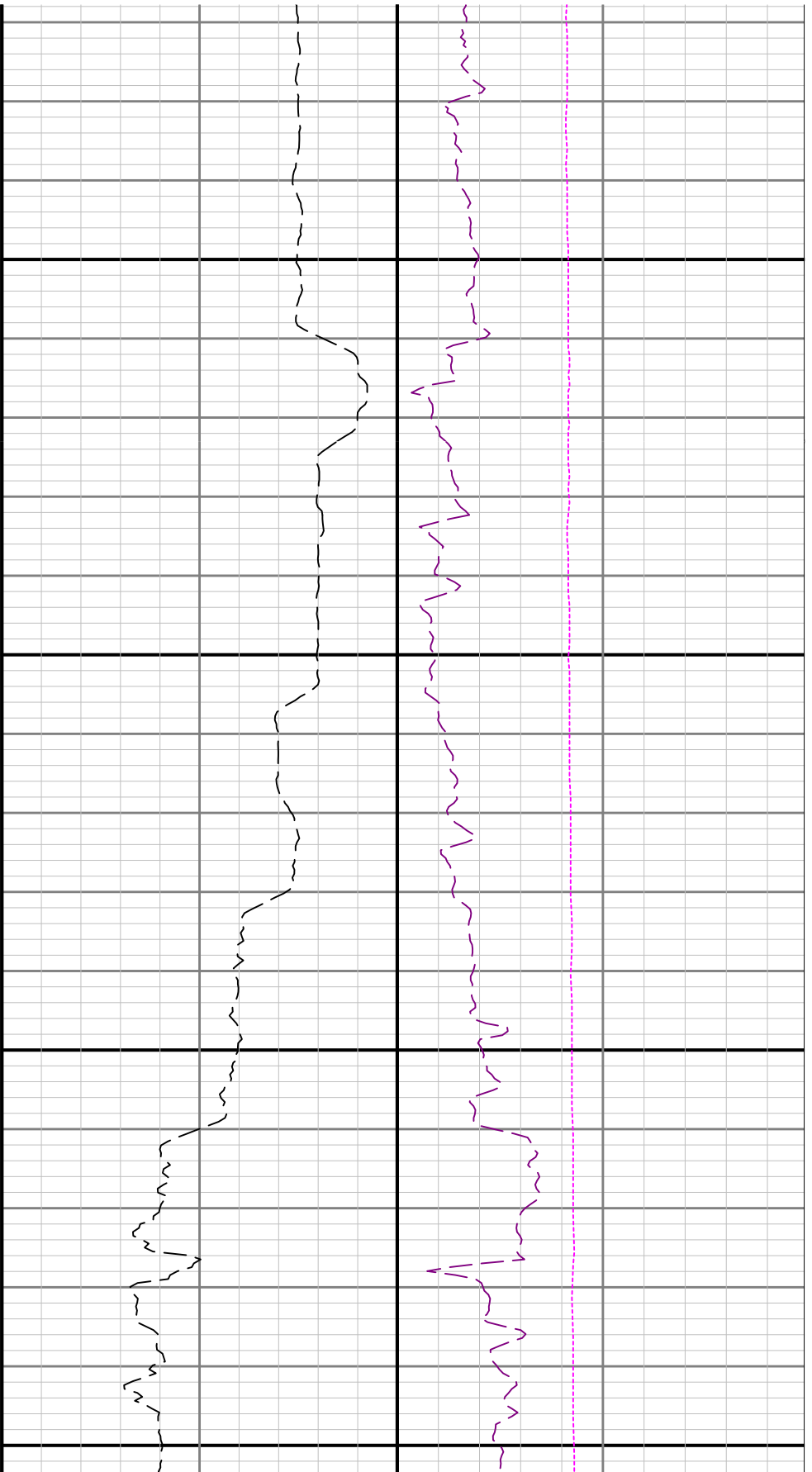
2300



2400

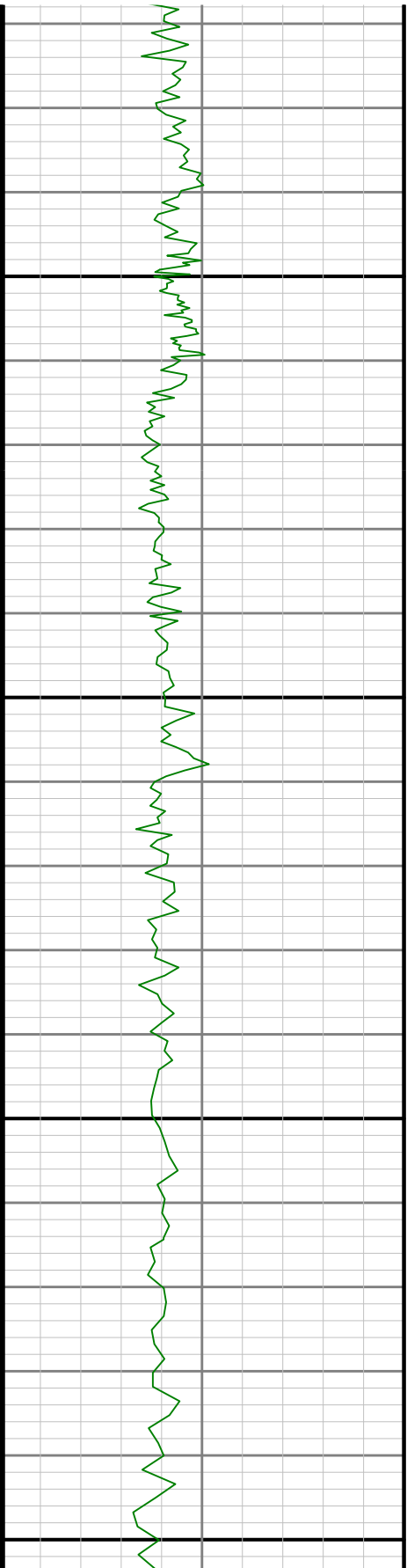
2500

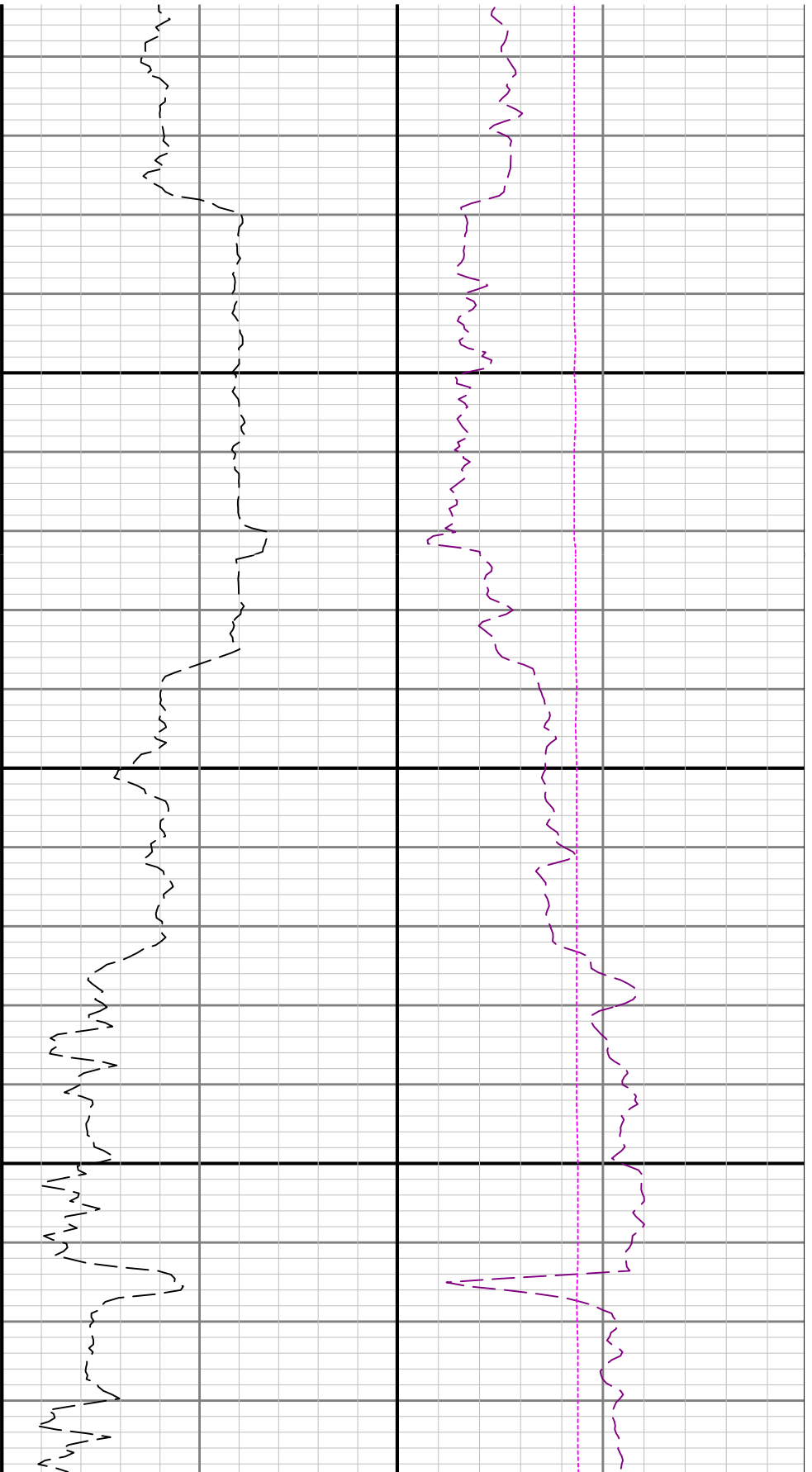




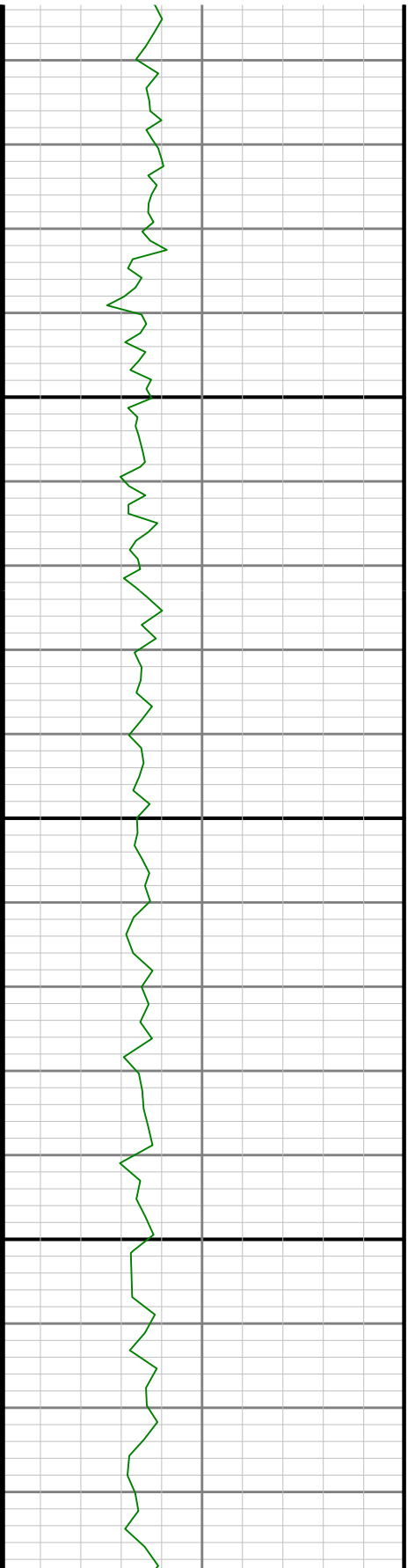
2600

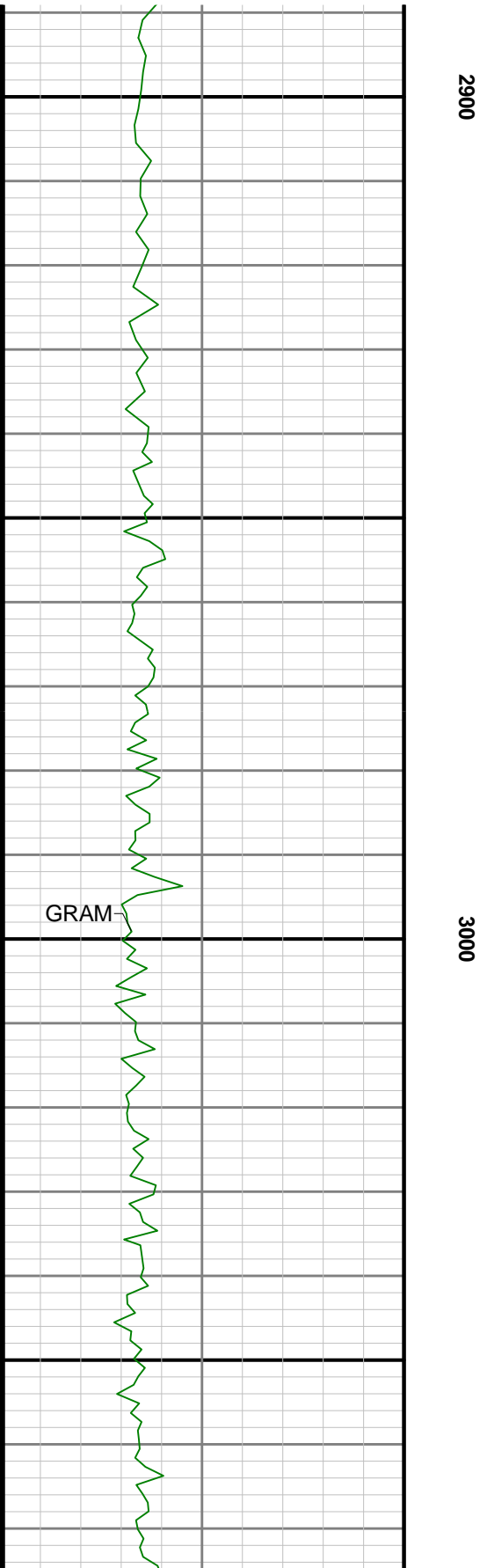
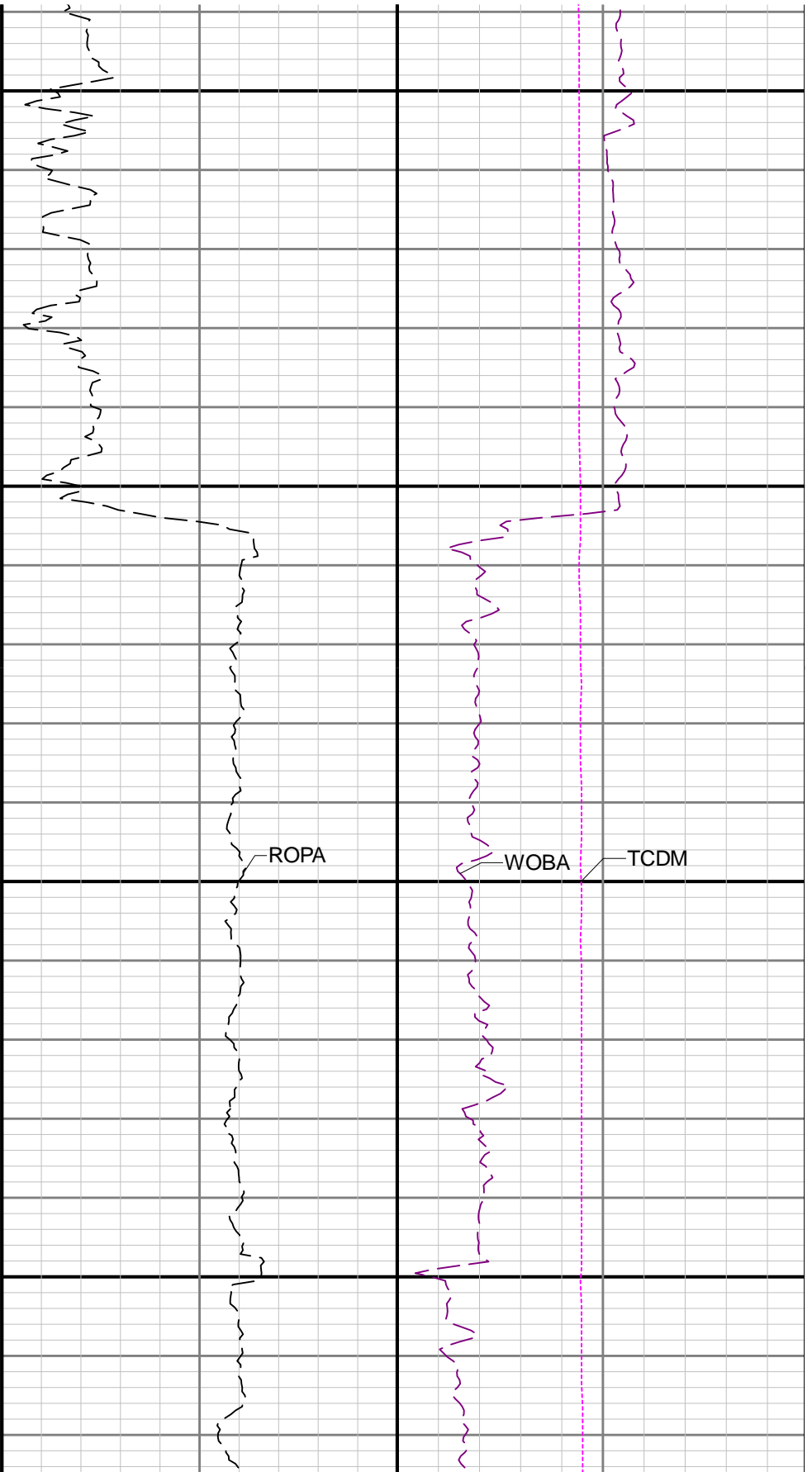
2700

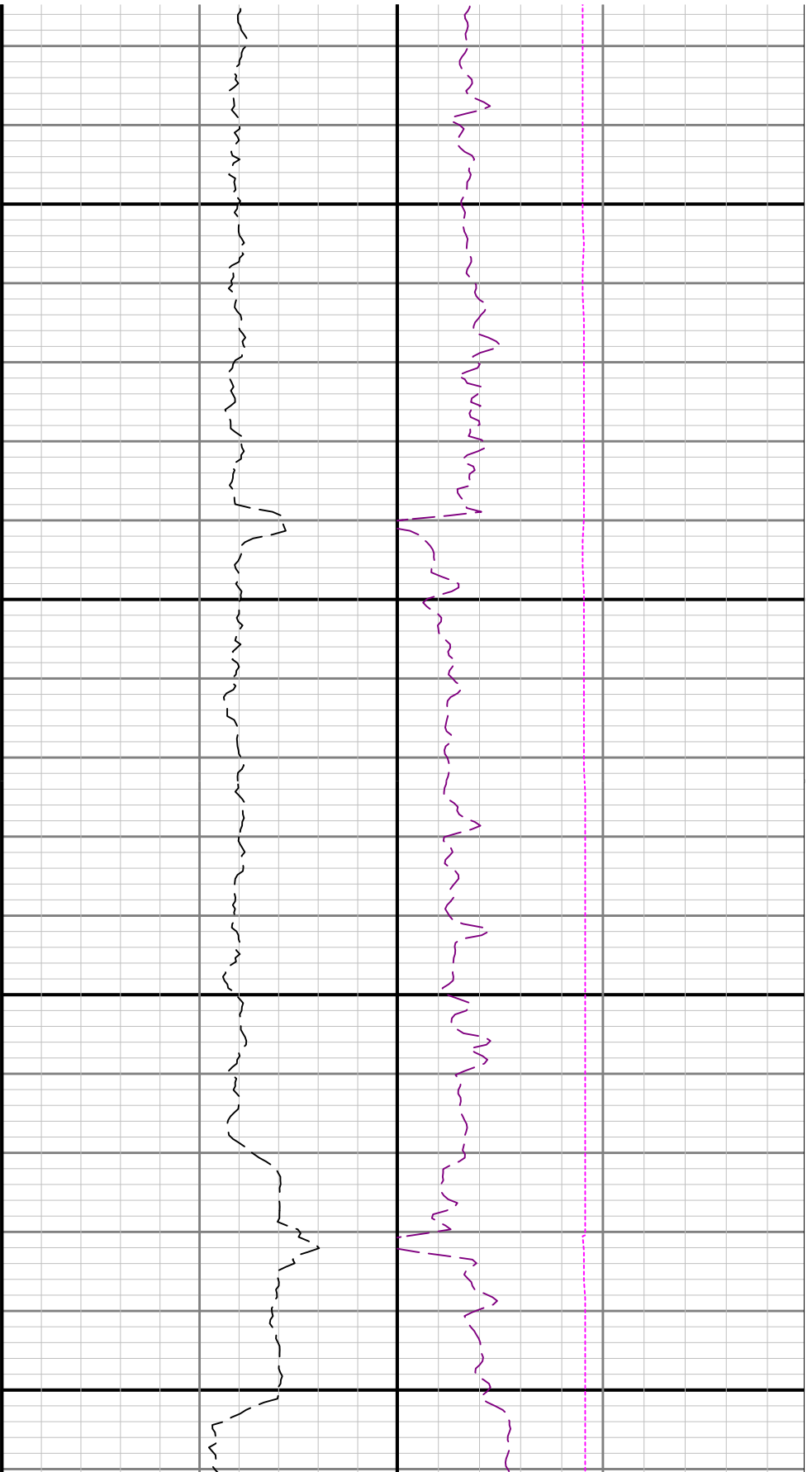




2800

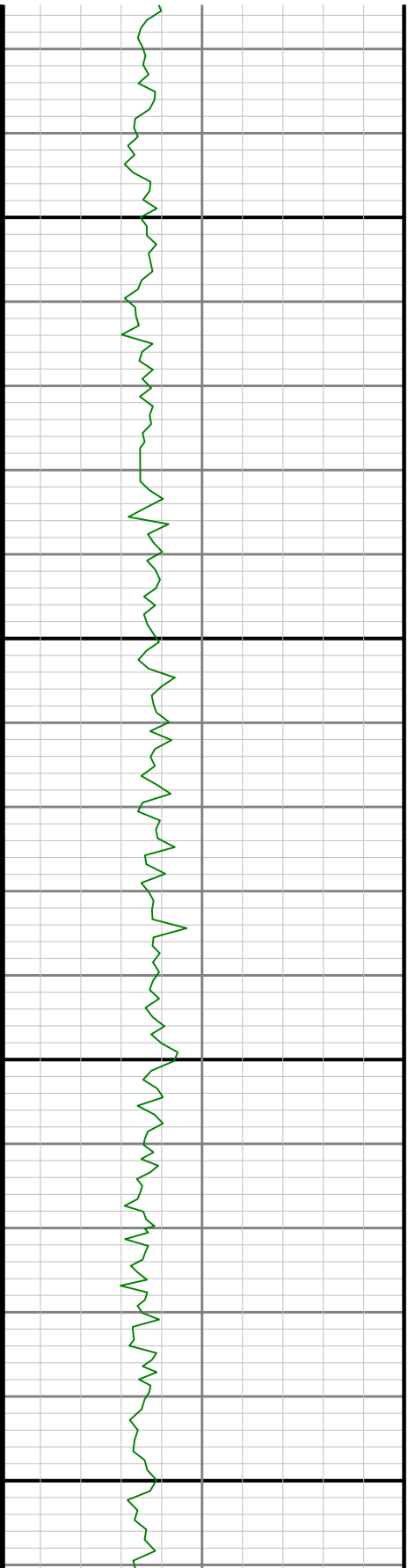


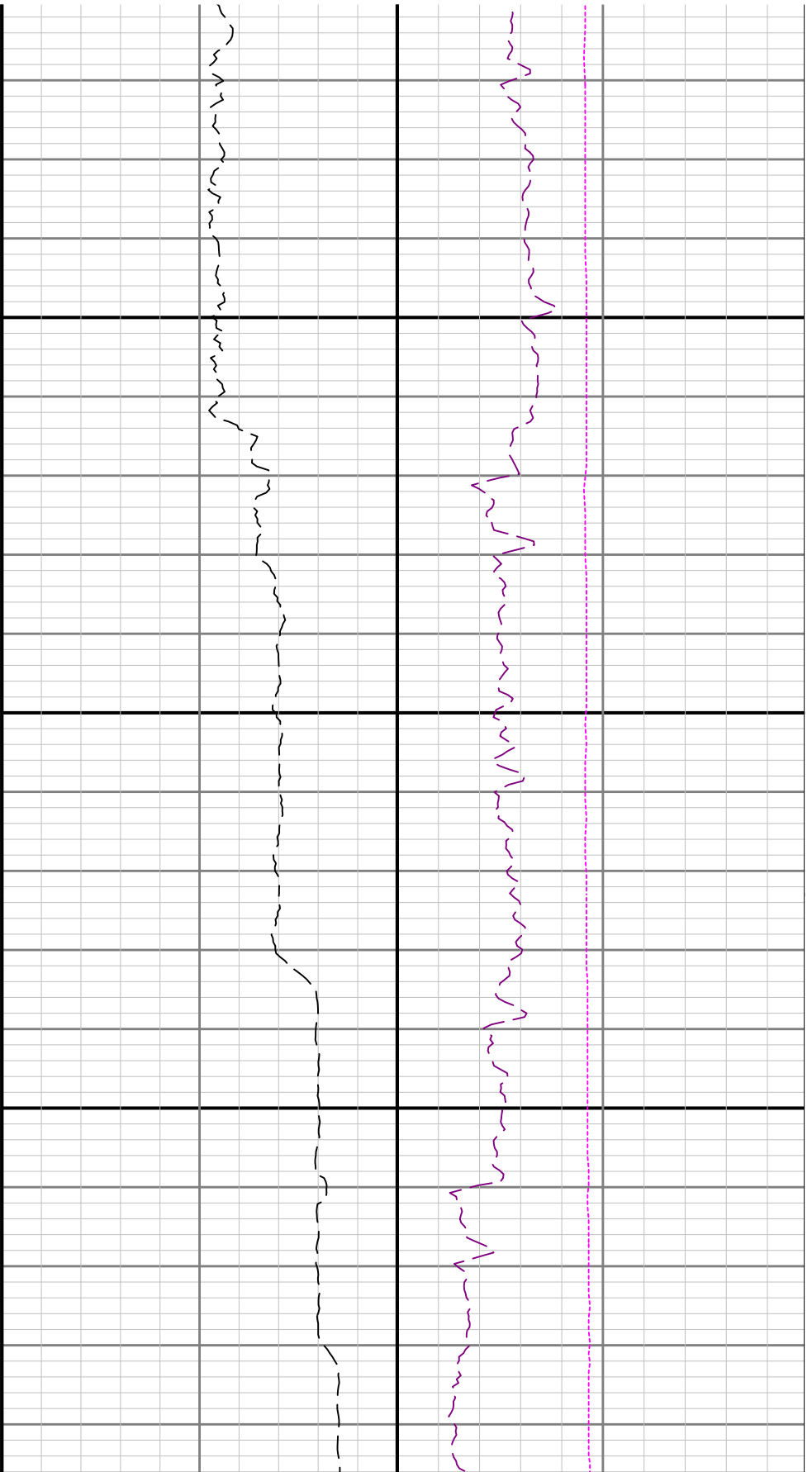




3100

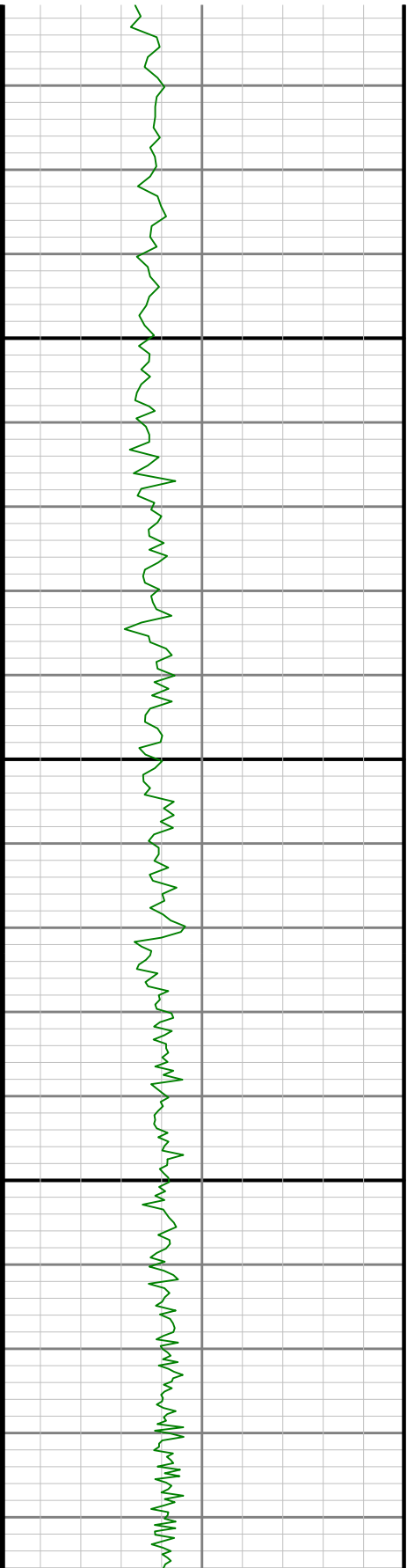
3200

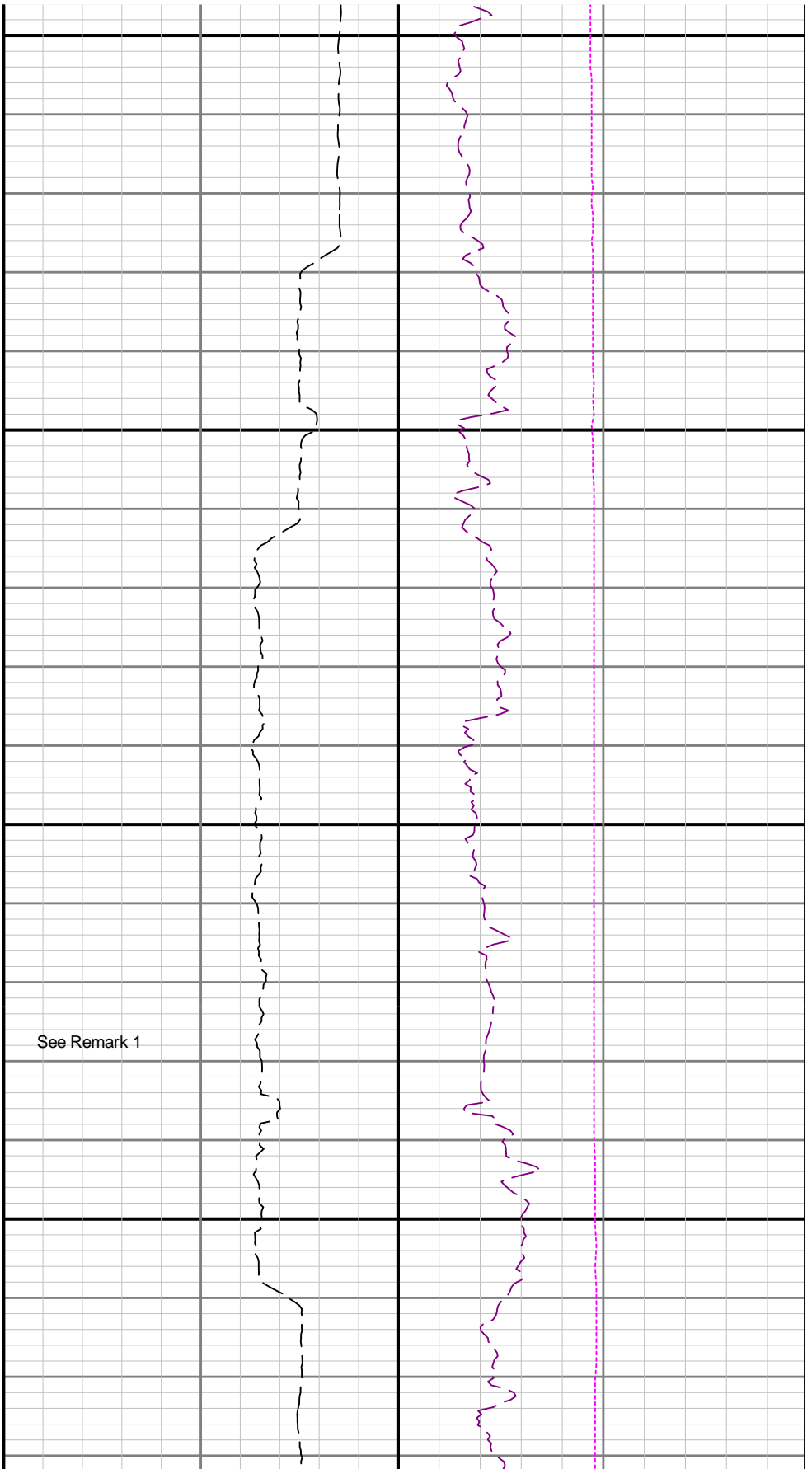




3300

3400

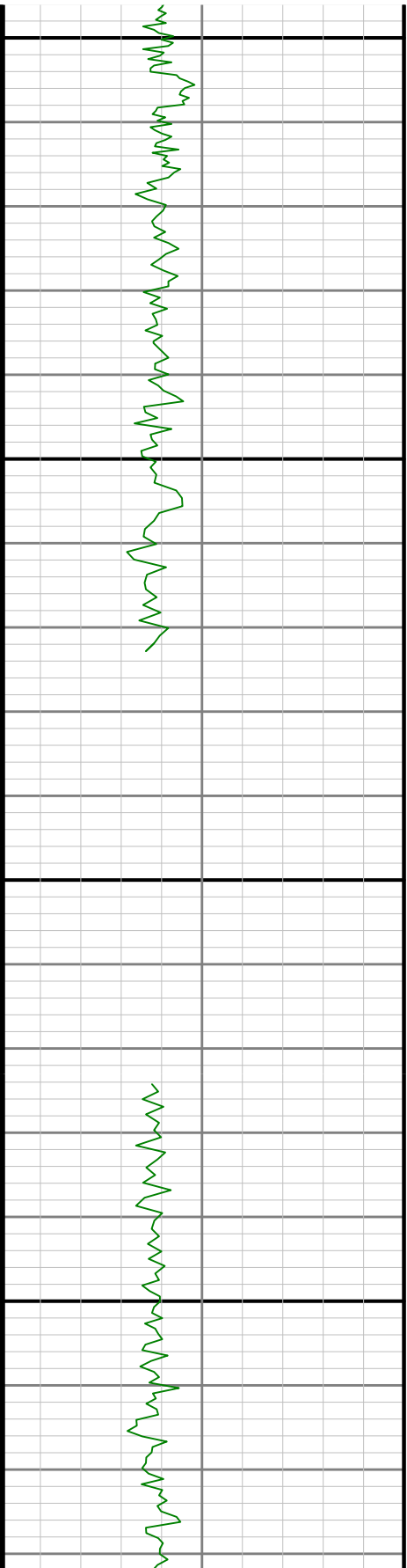


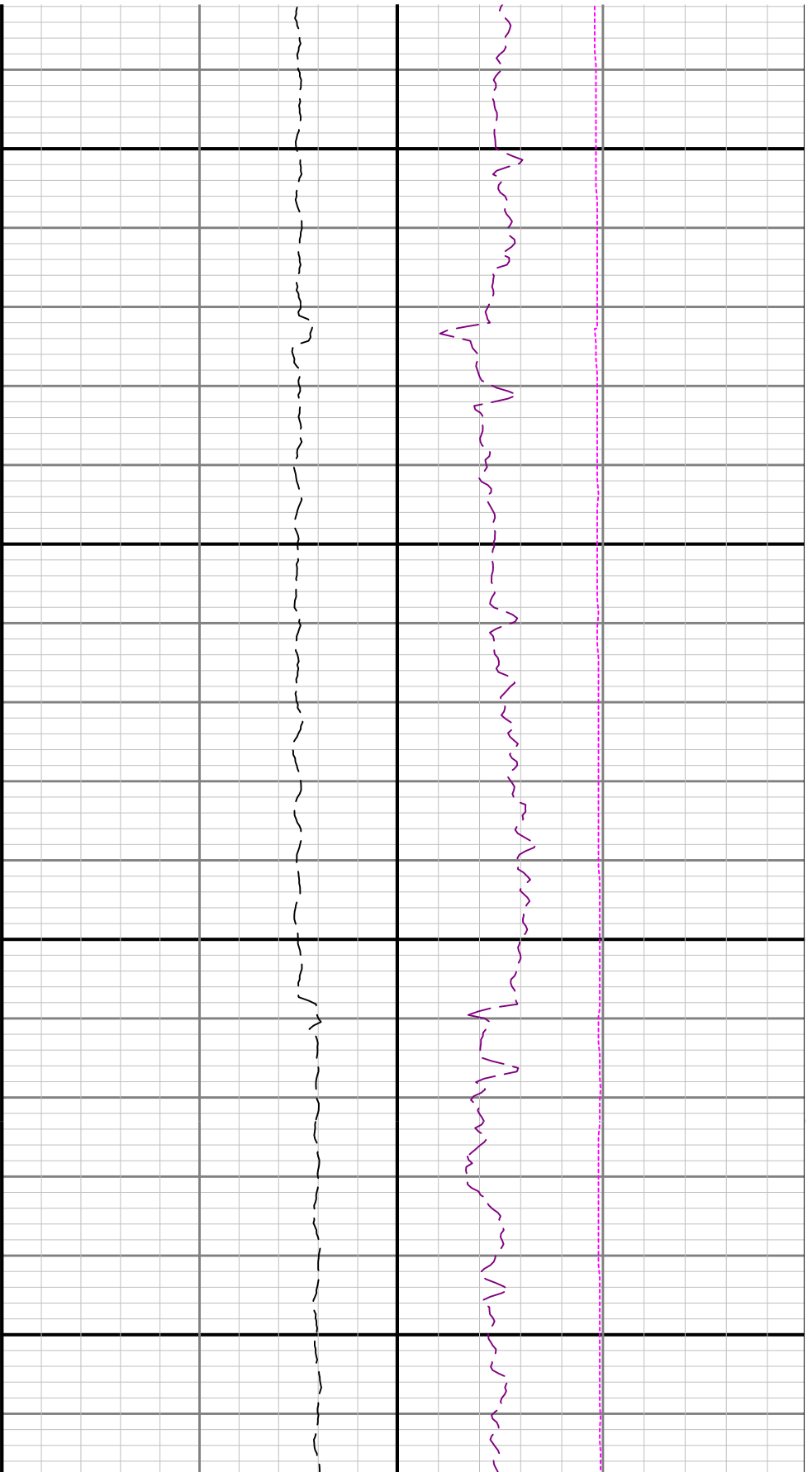


See Remark 1

3500

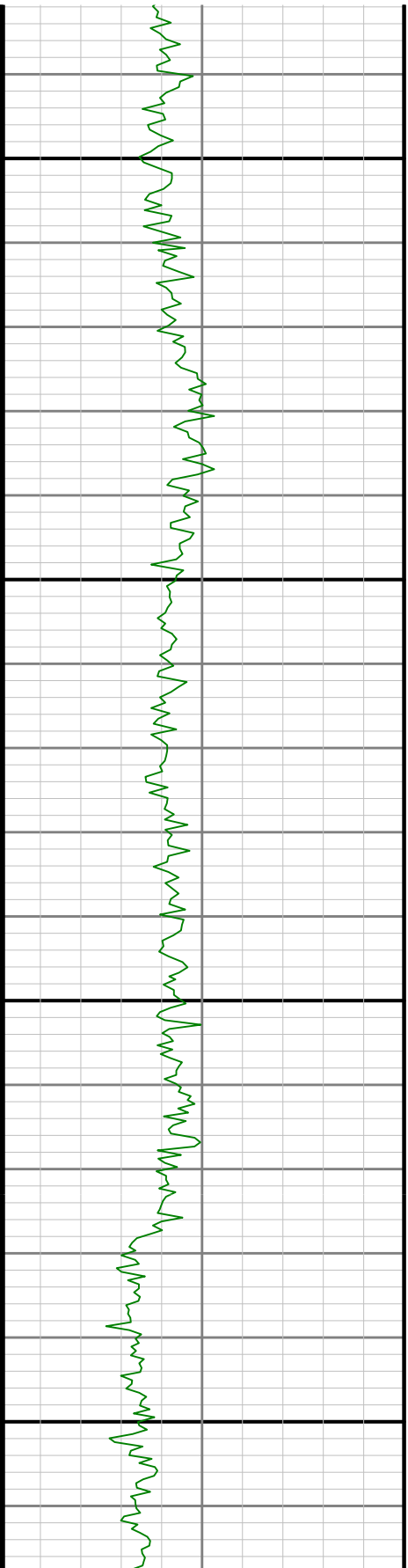
3600

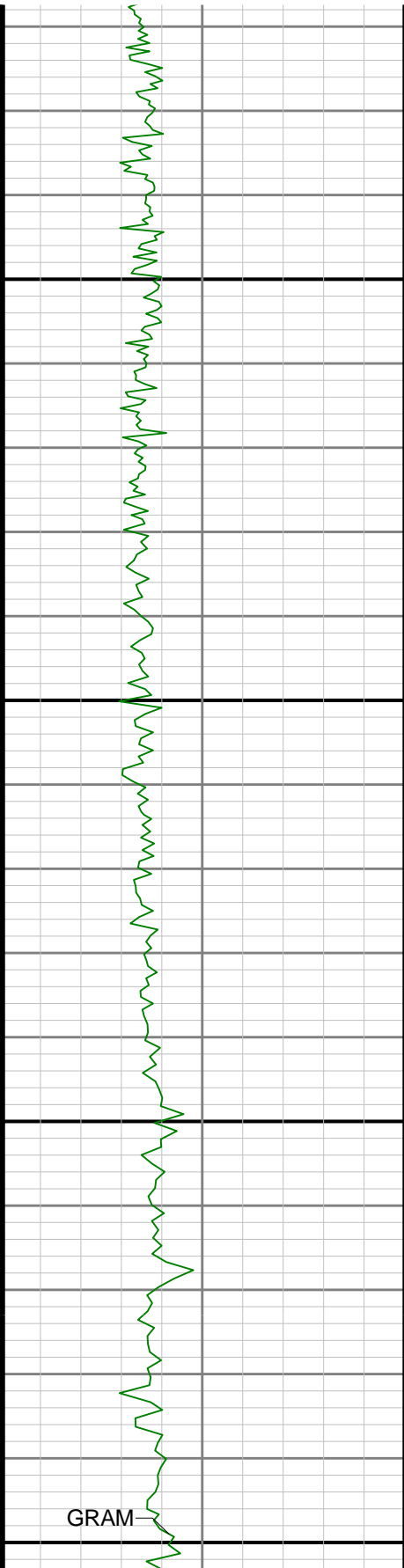




3700

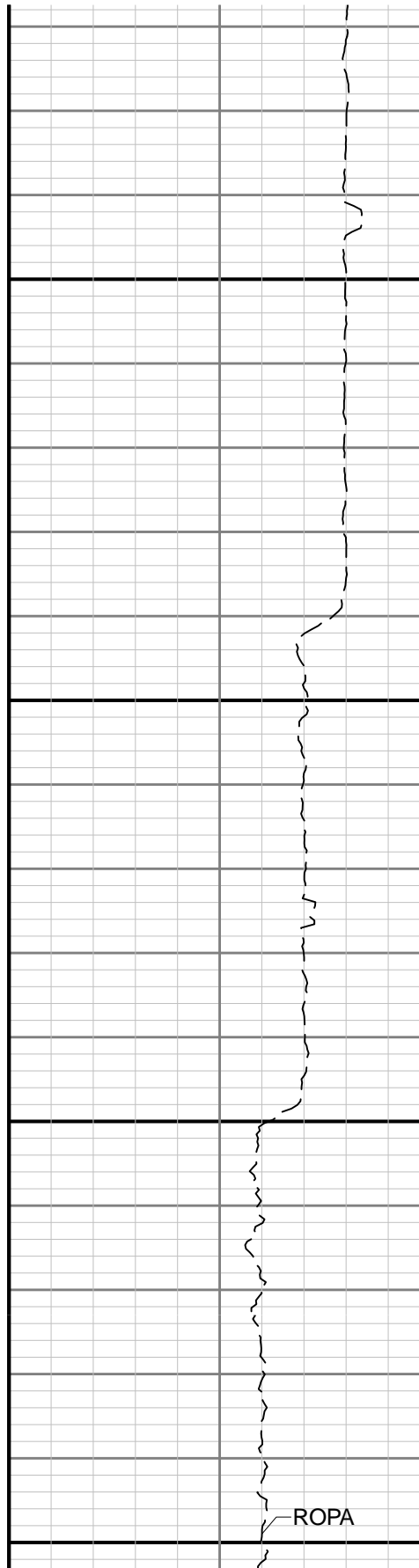
3800





3900

4000

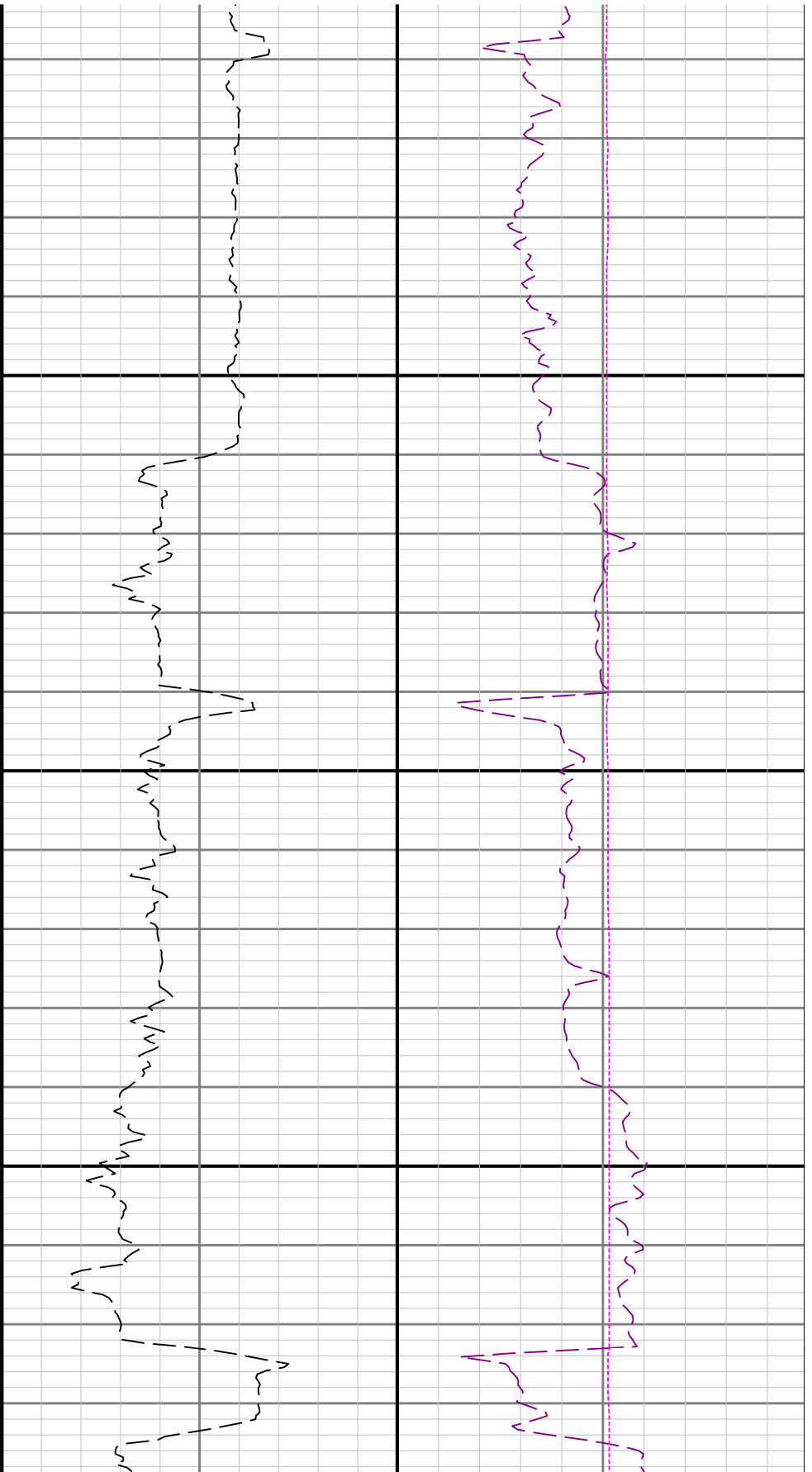


ROPA

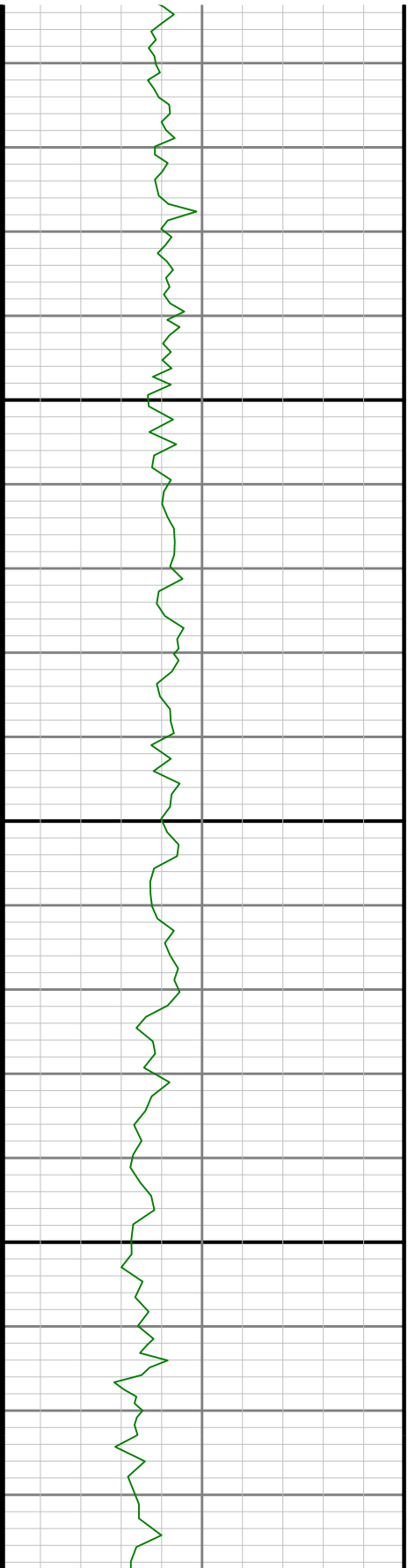


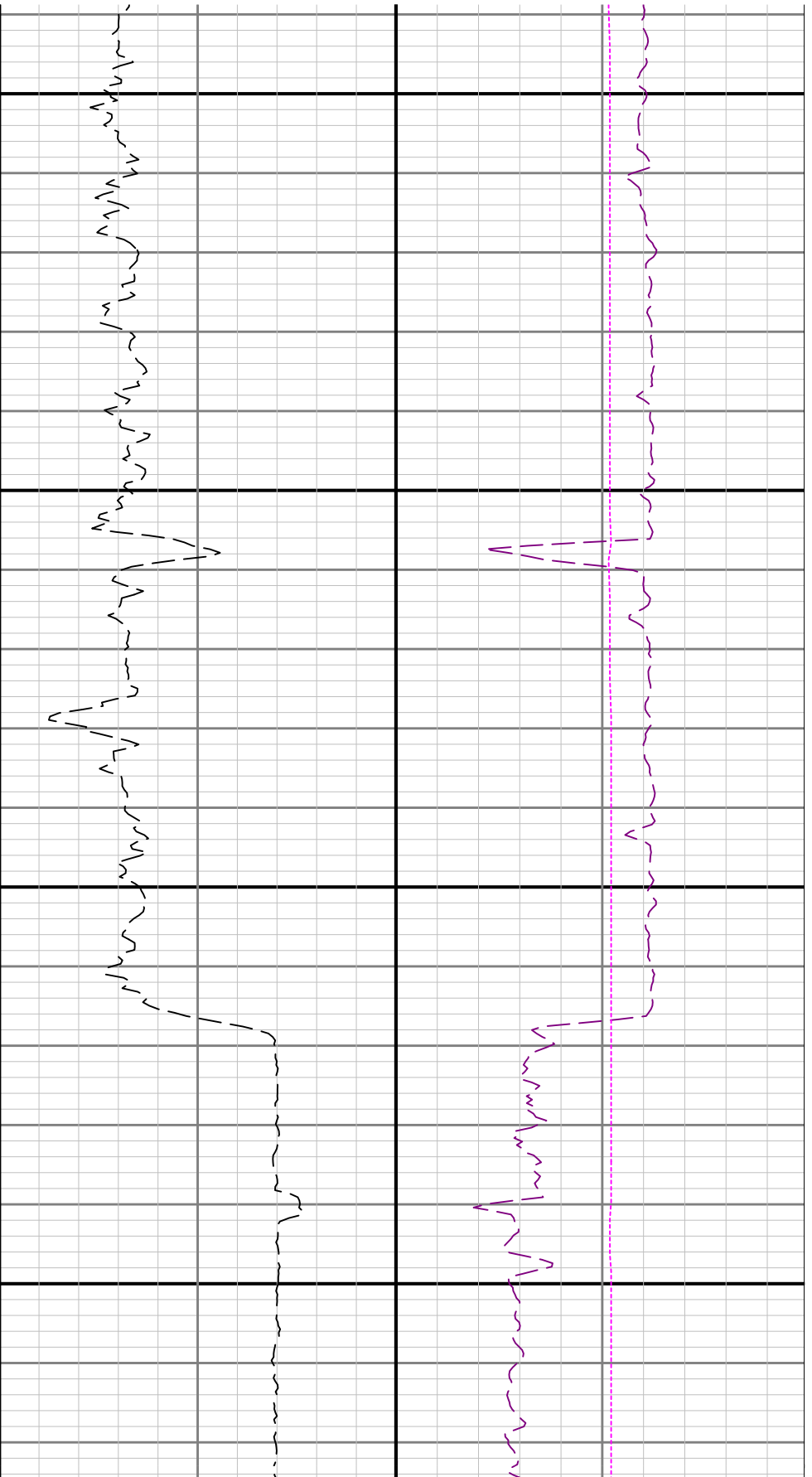
WOBA

TCDM



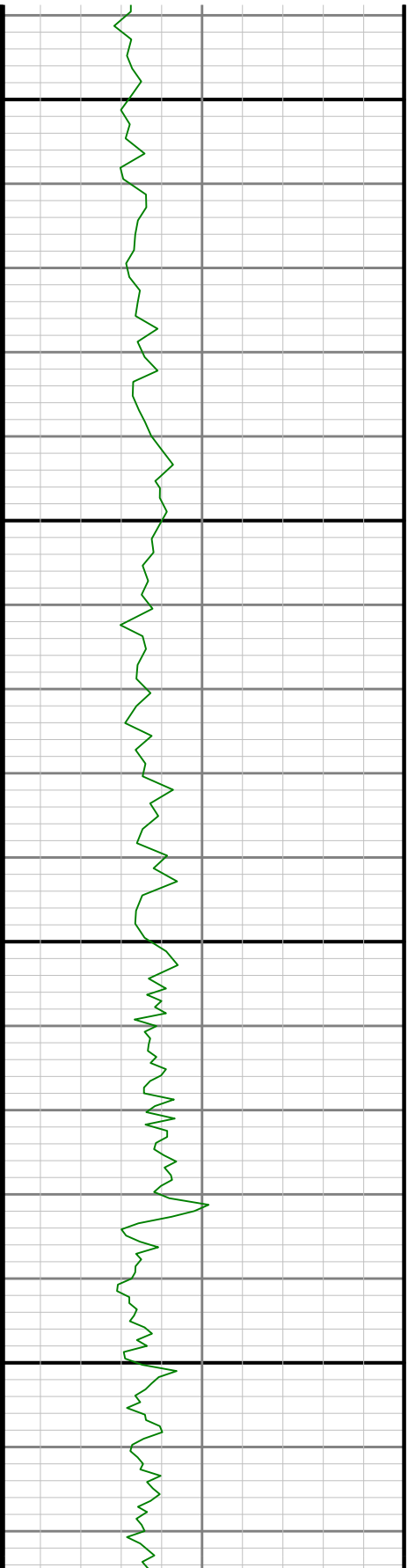
4100

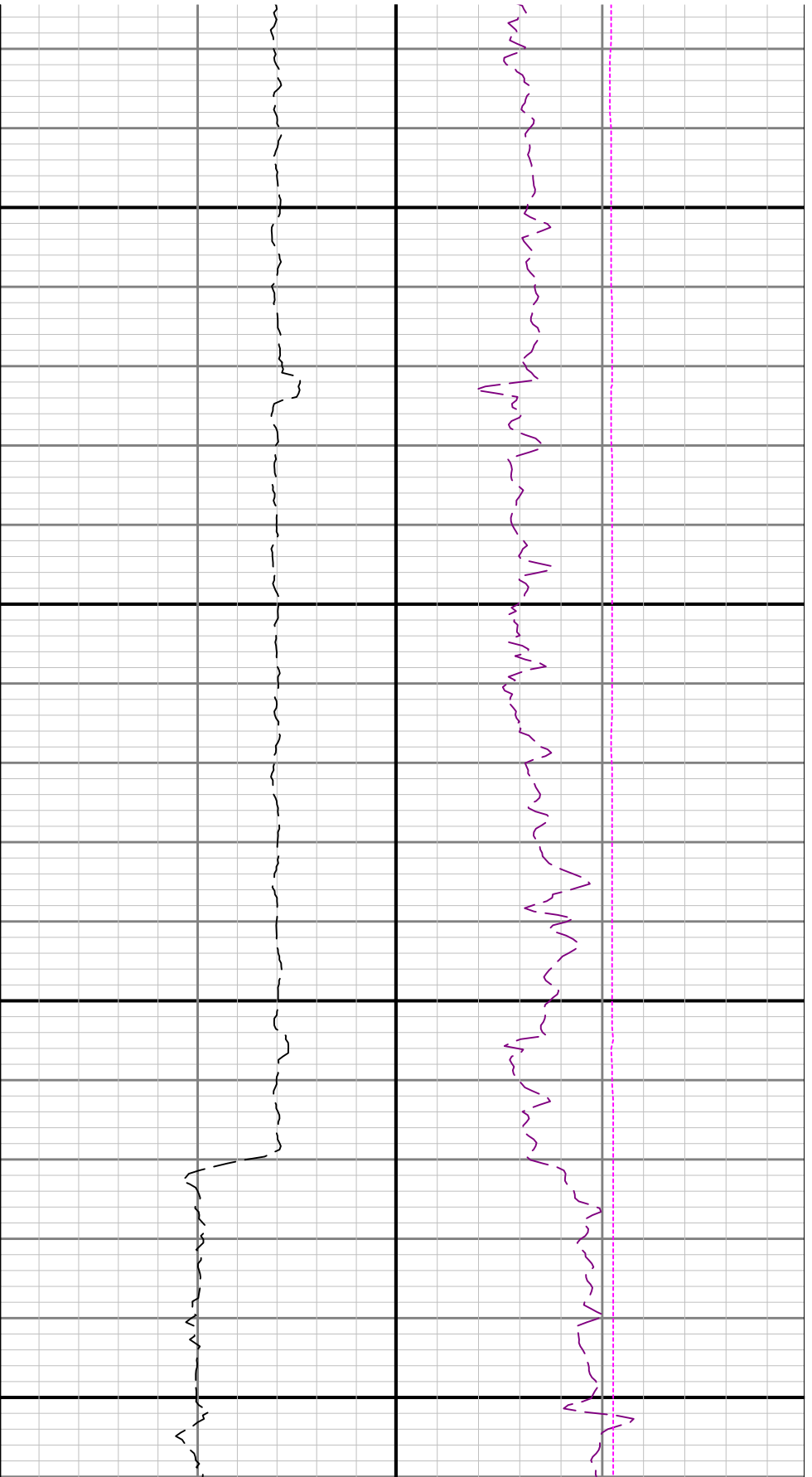




4200

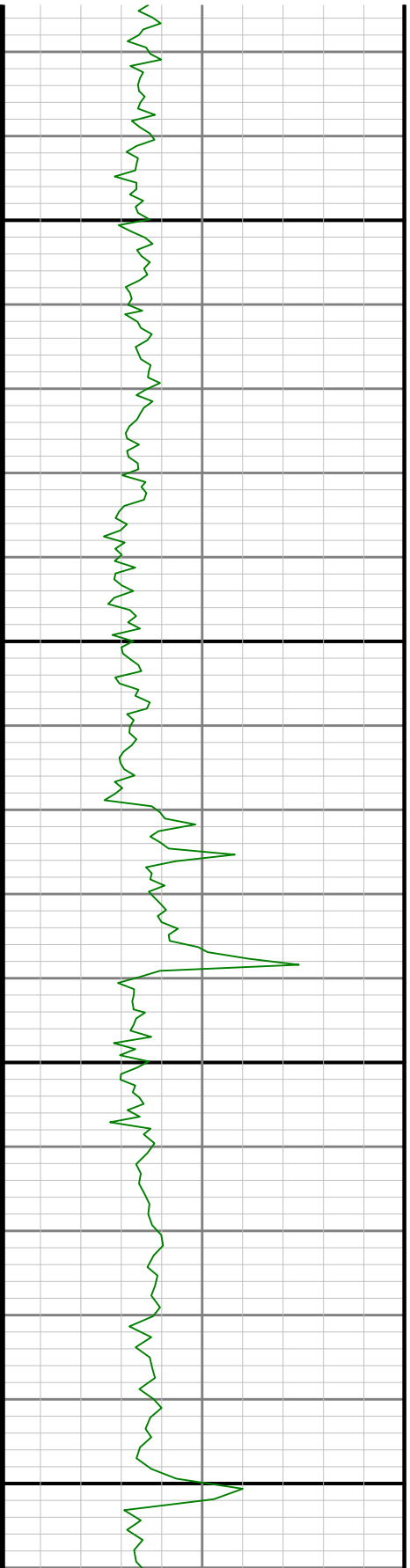
4300

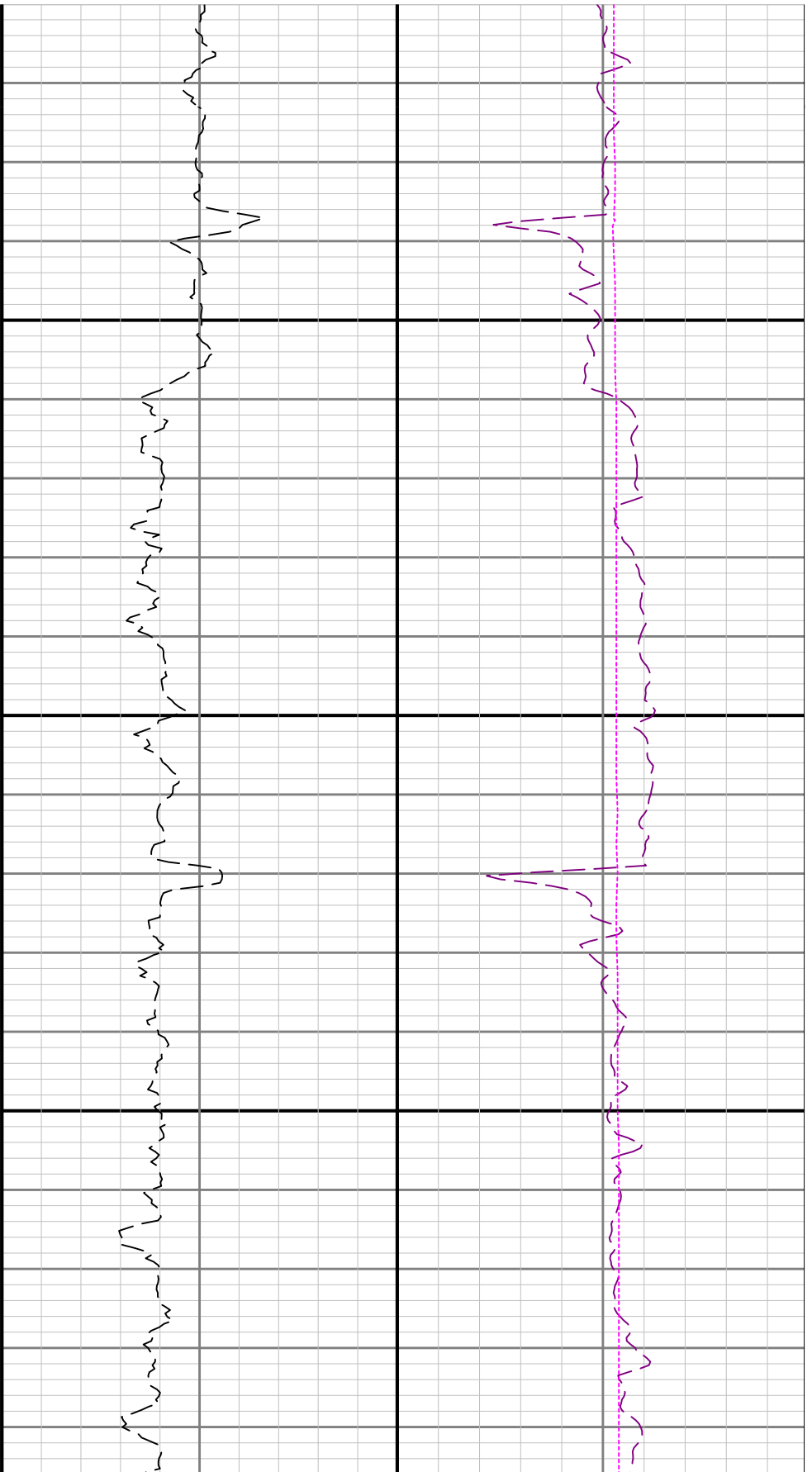




4400

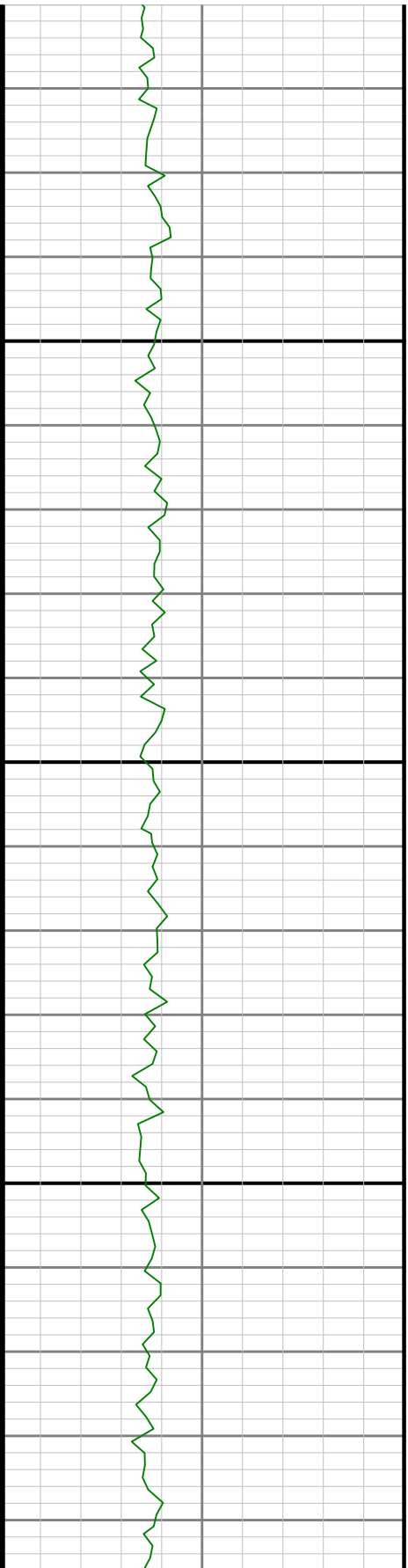
4500

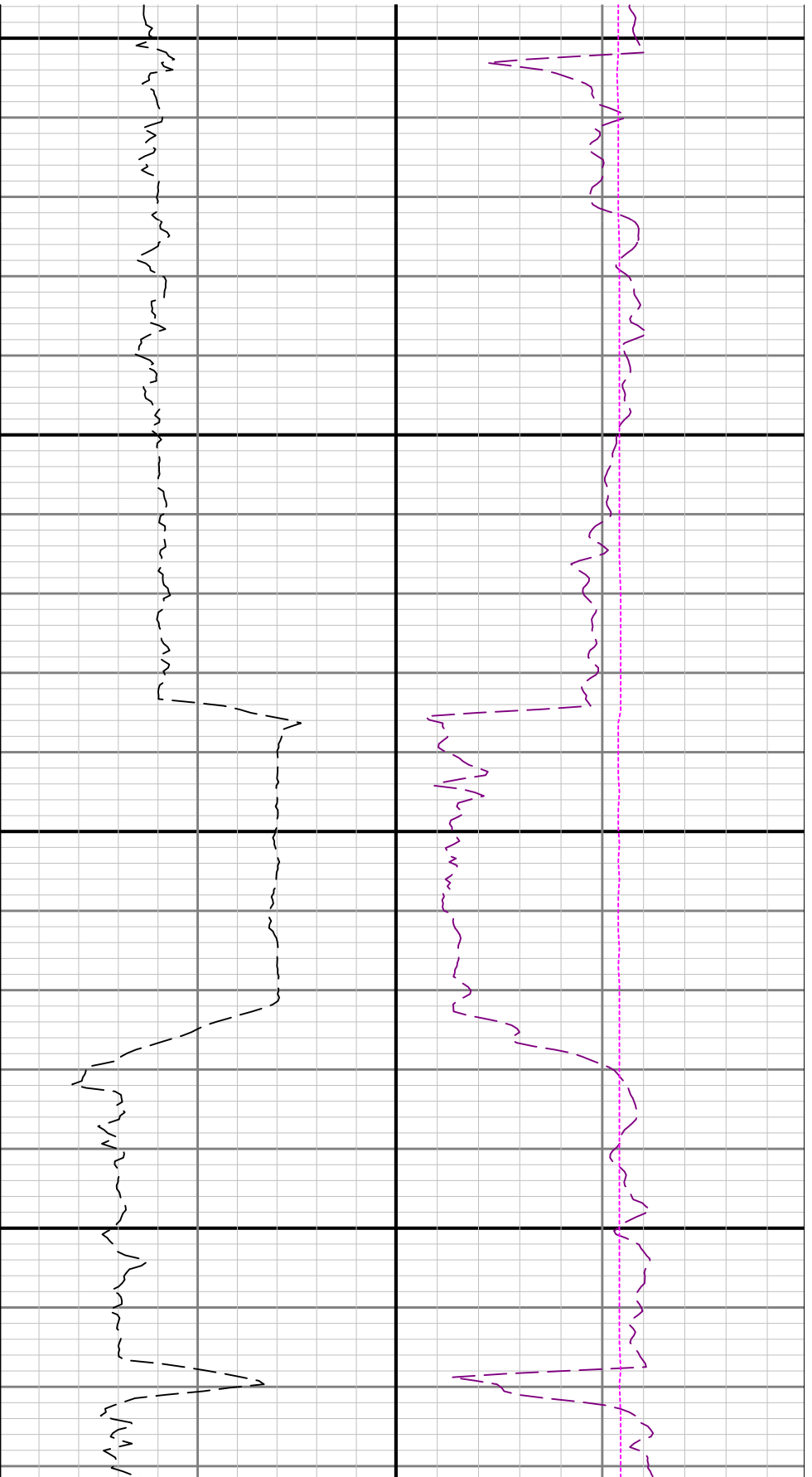




4600

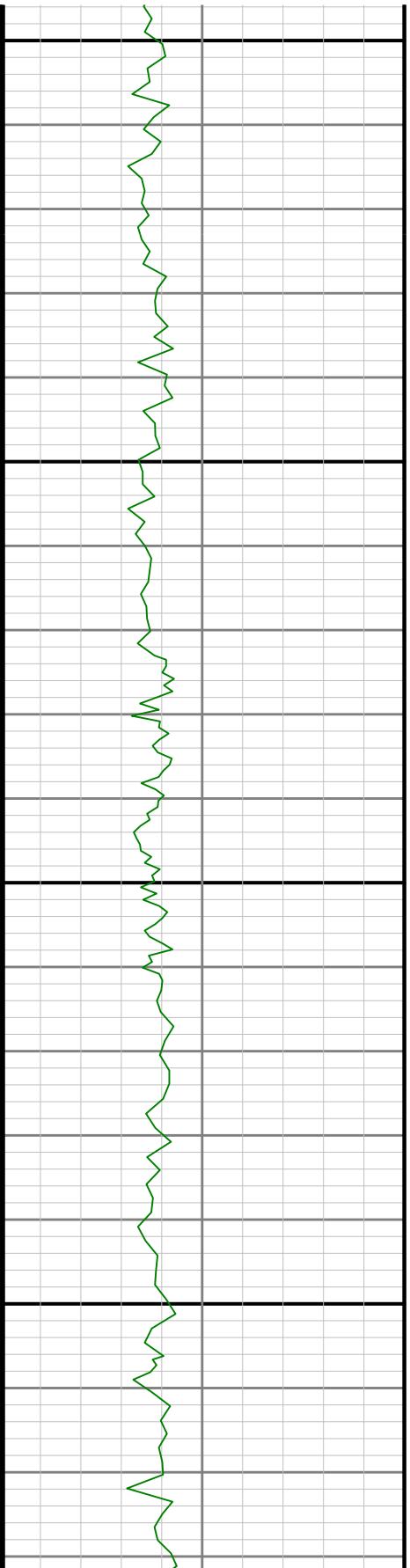
4700

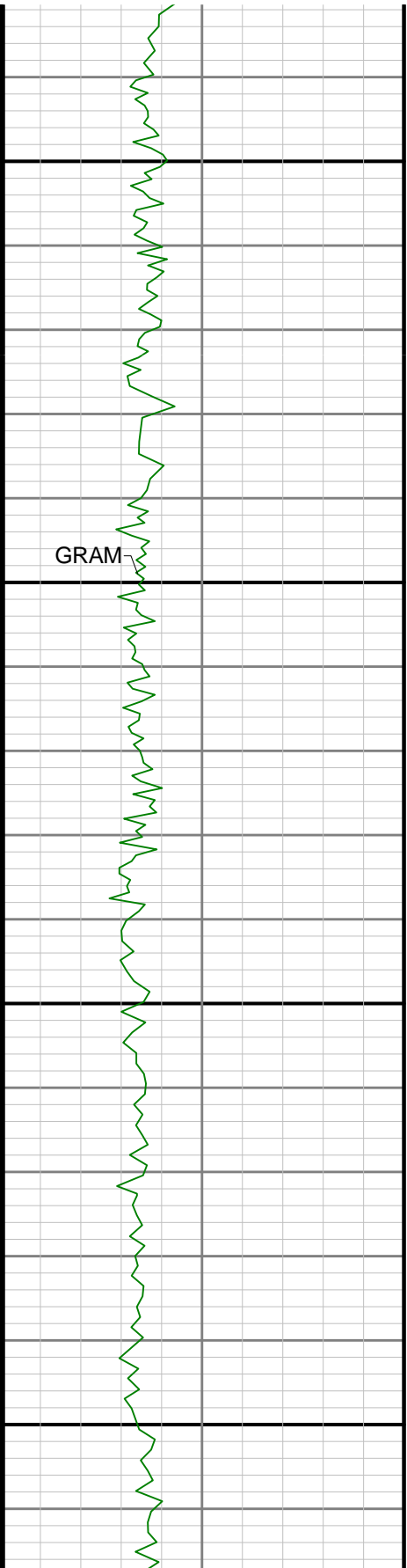




4800

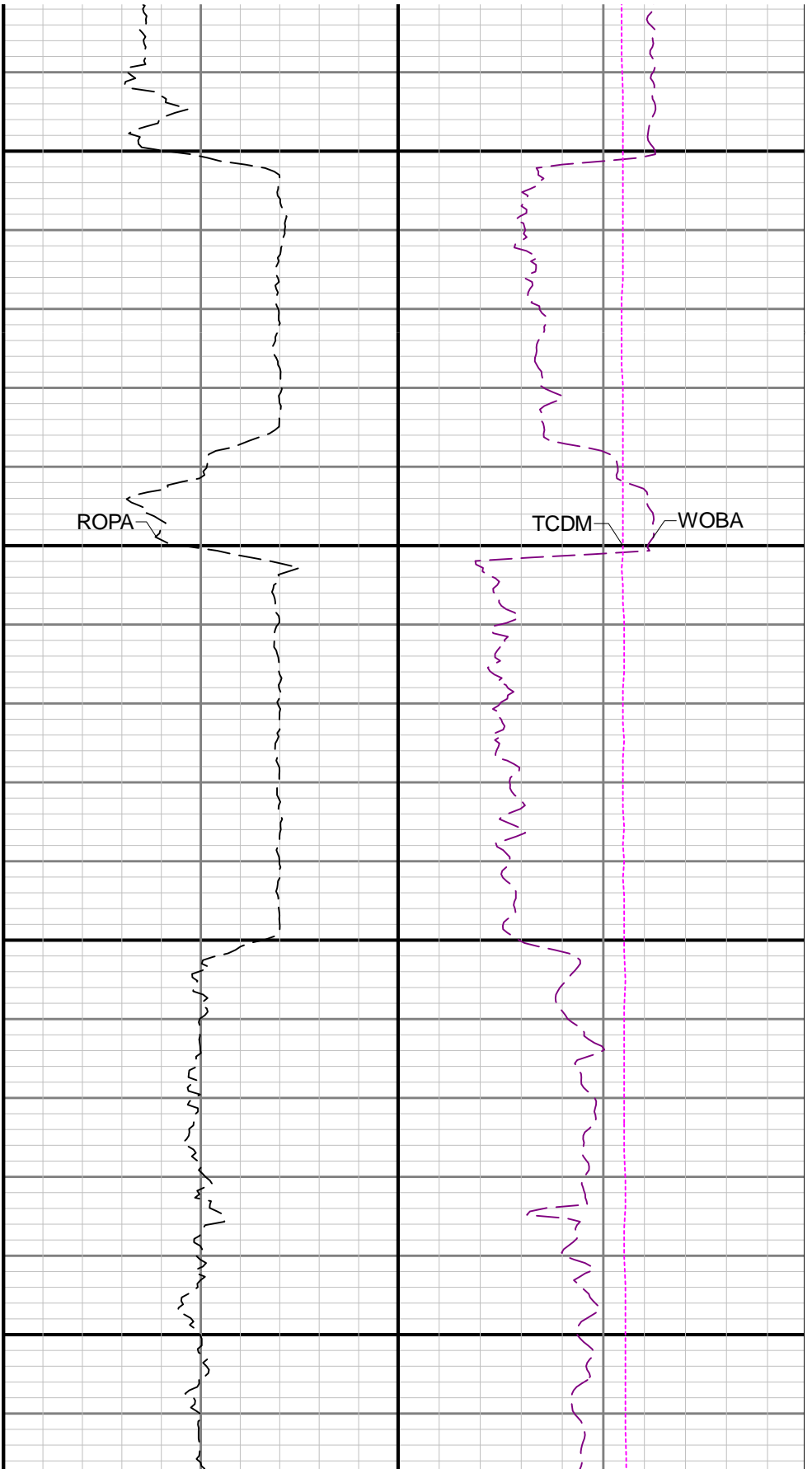
4900

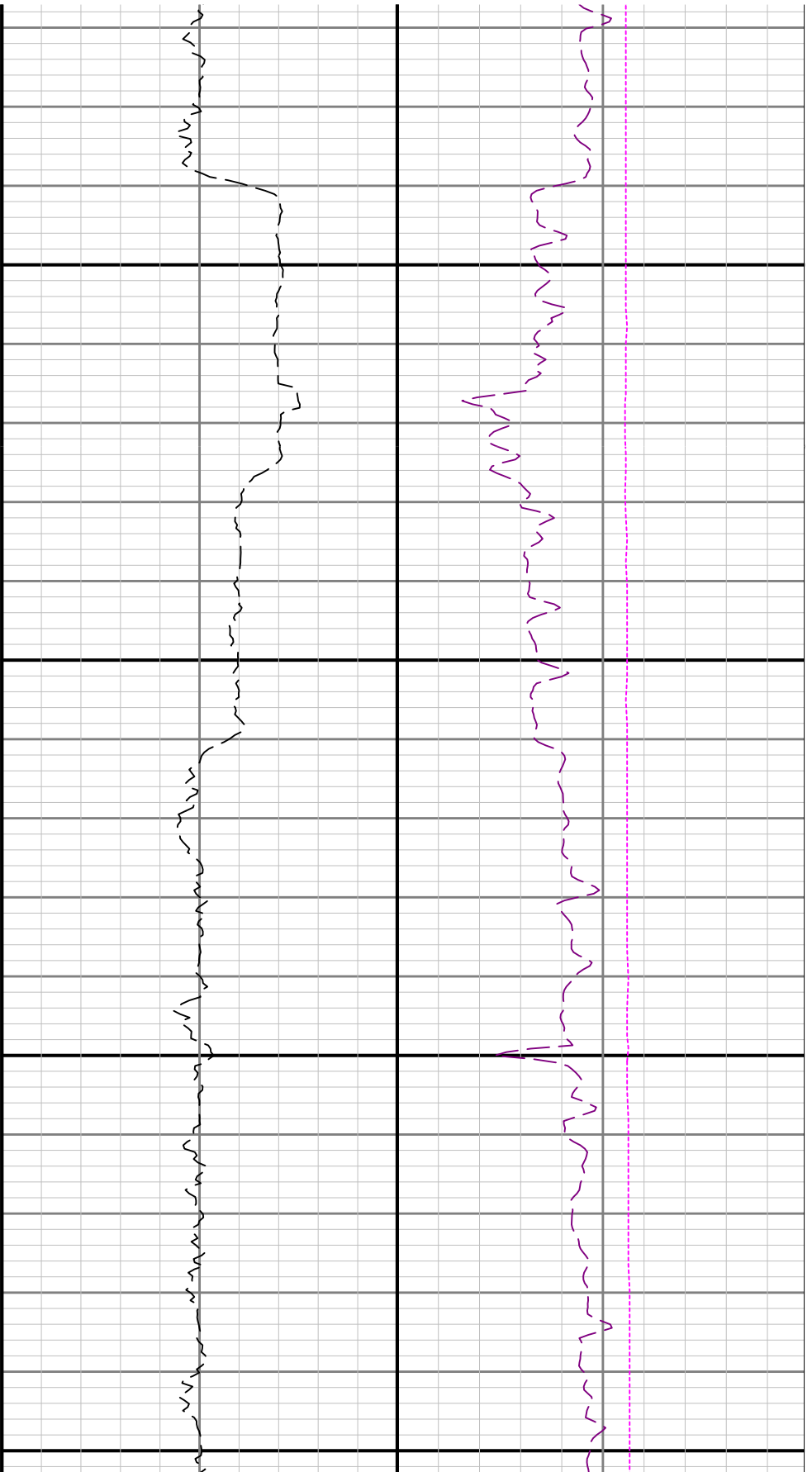




5000

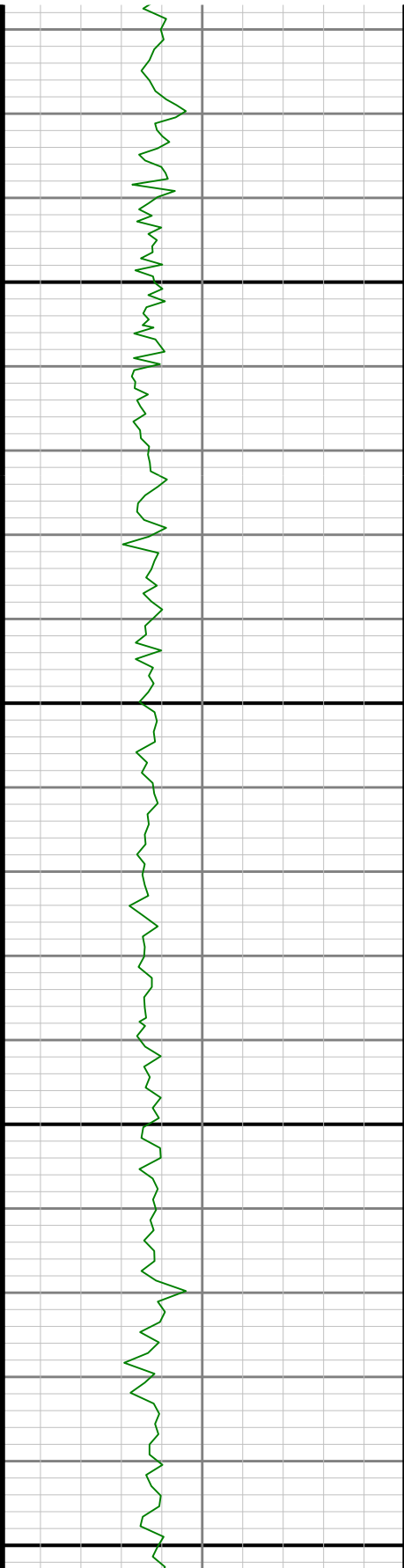
5100

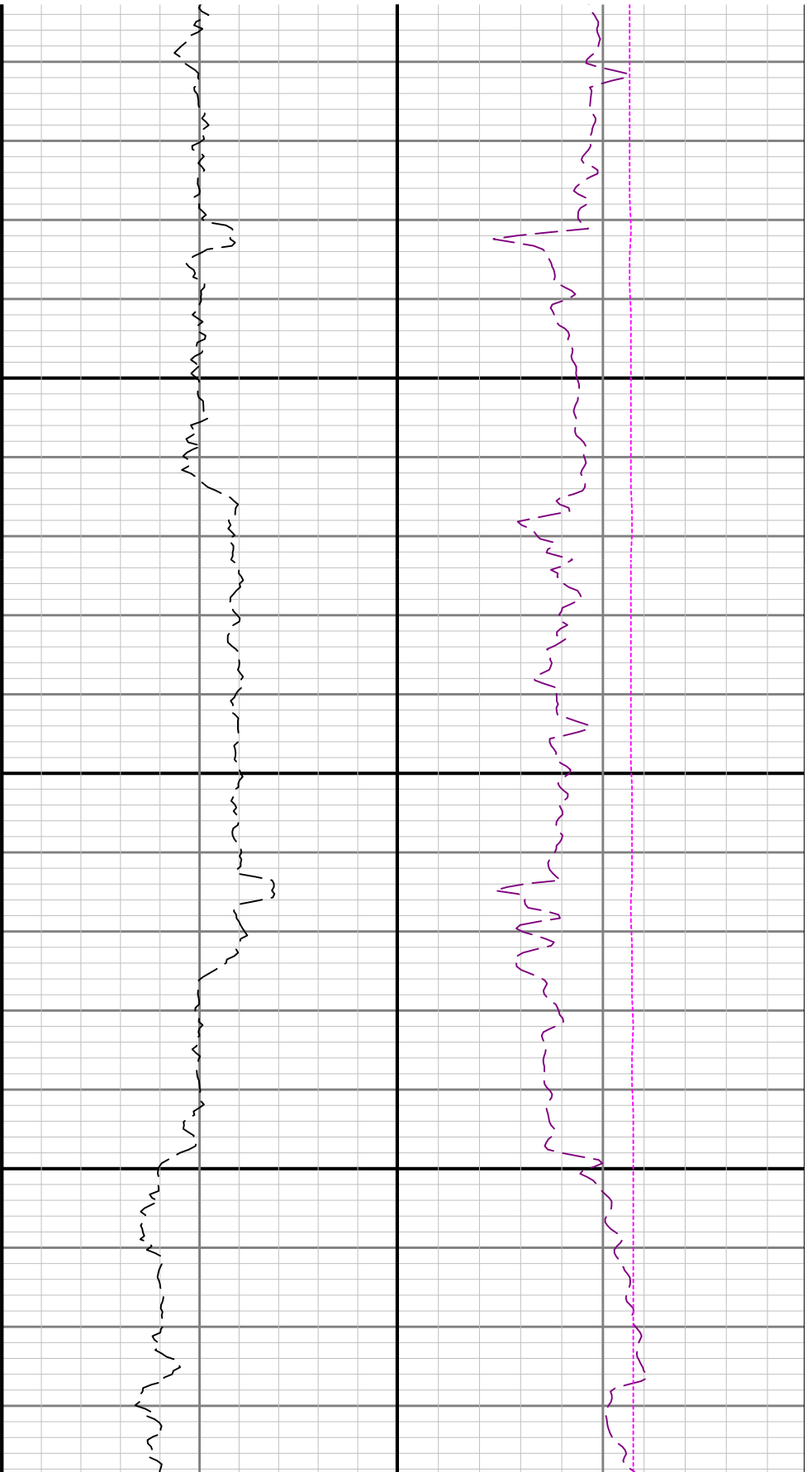




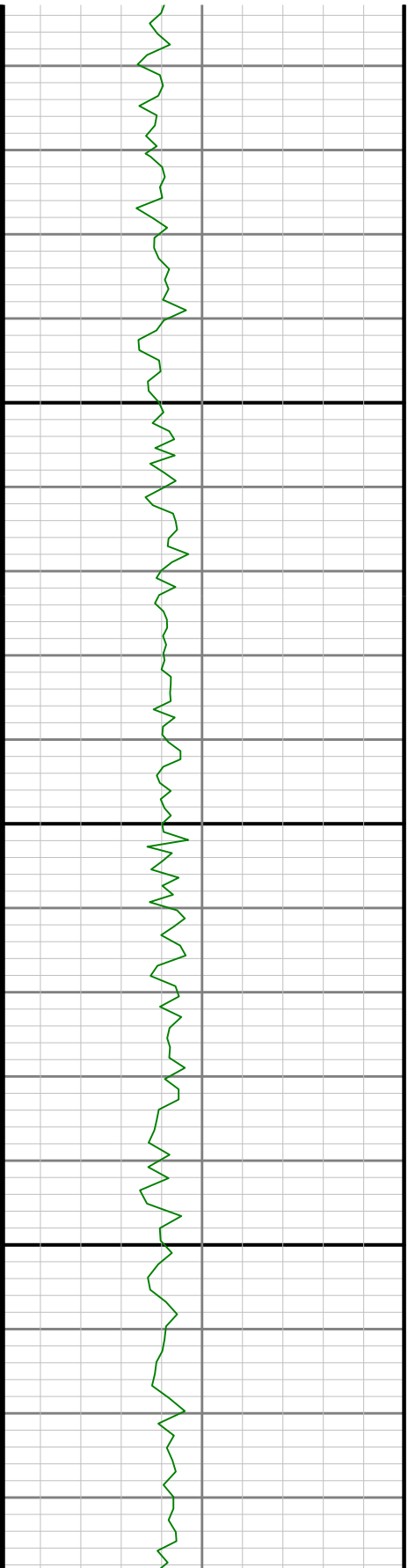
5200

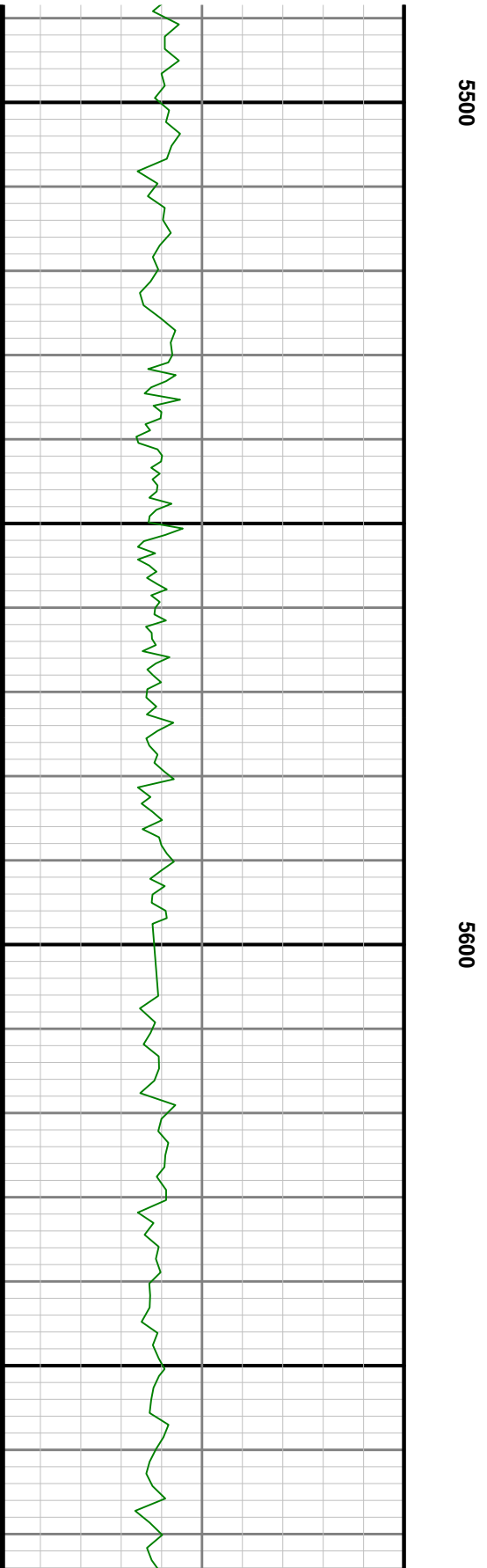
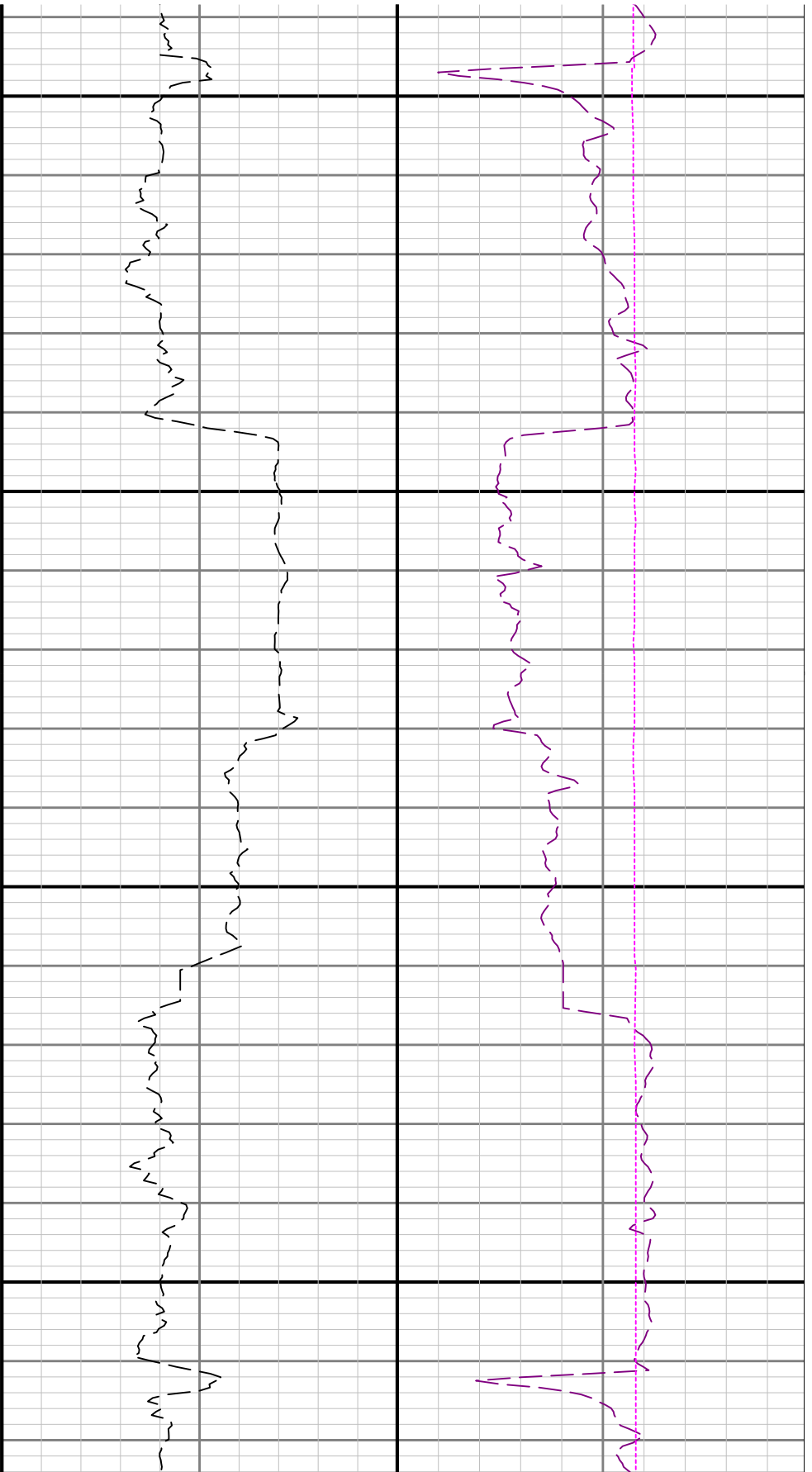
5300

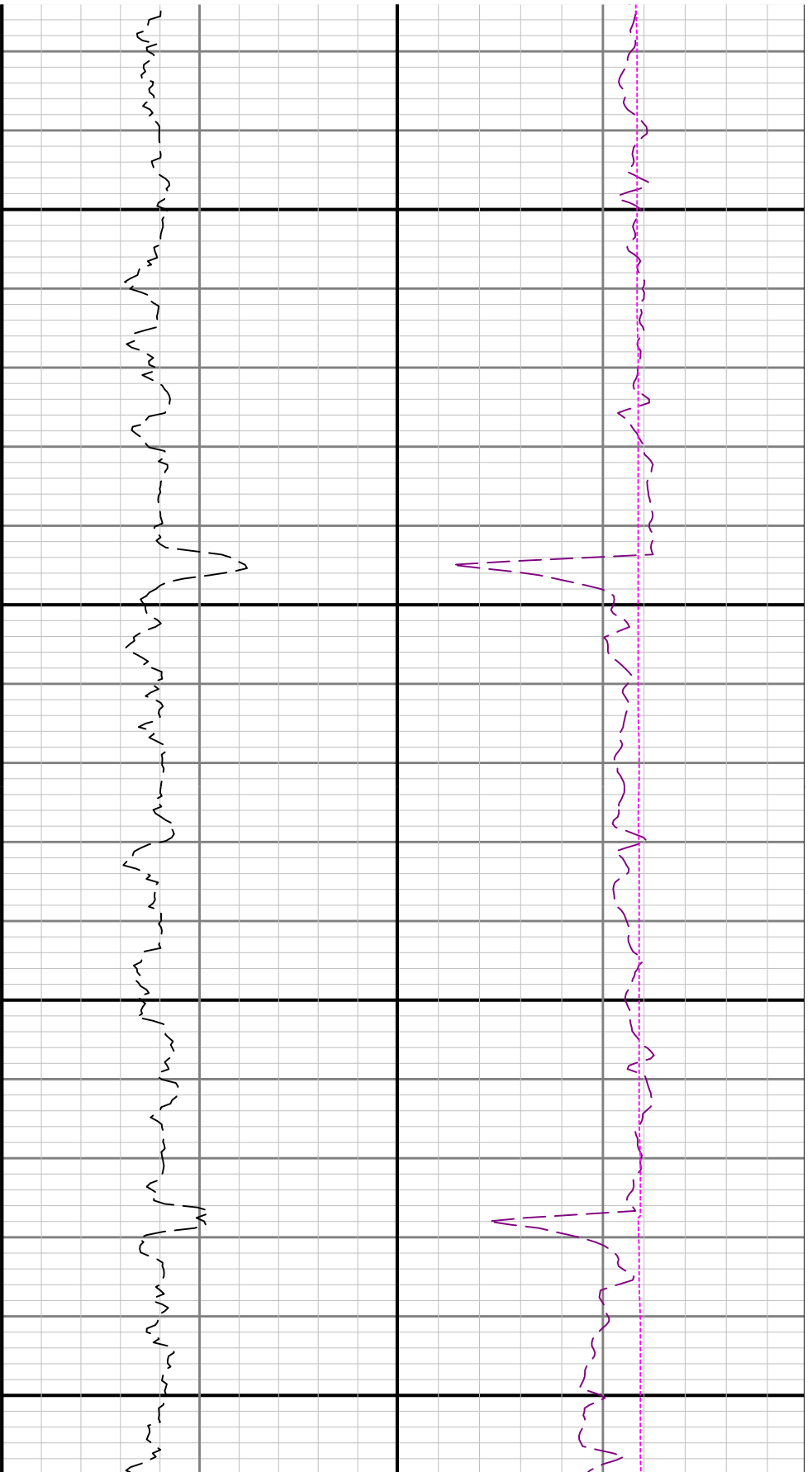




5400

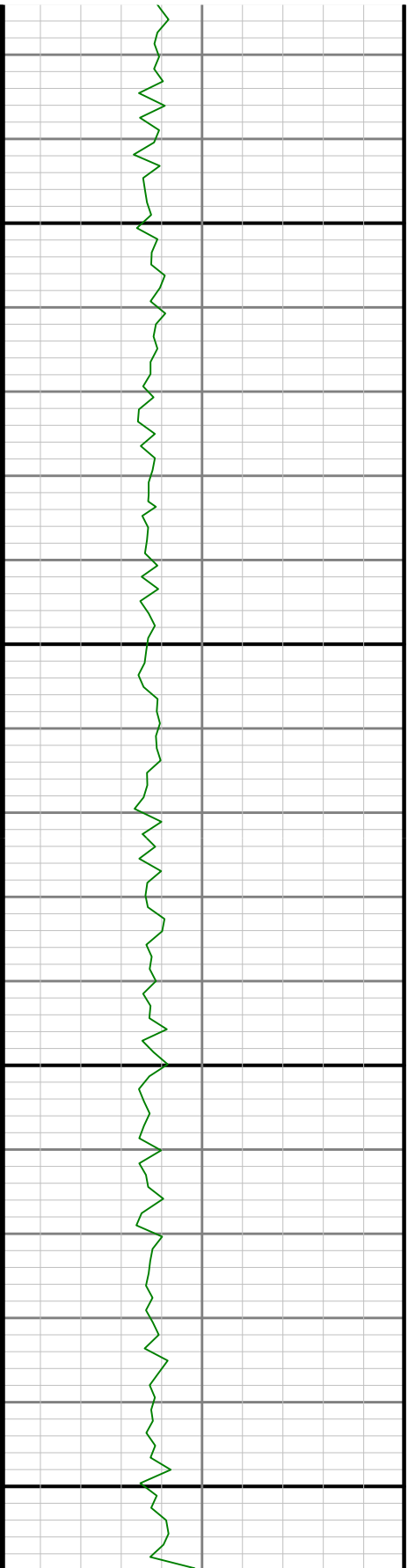


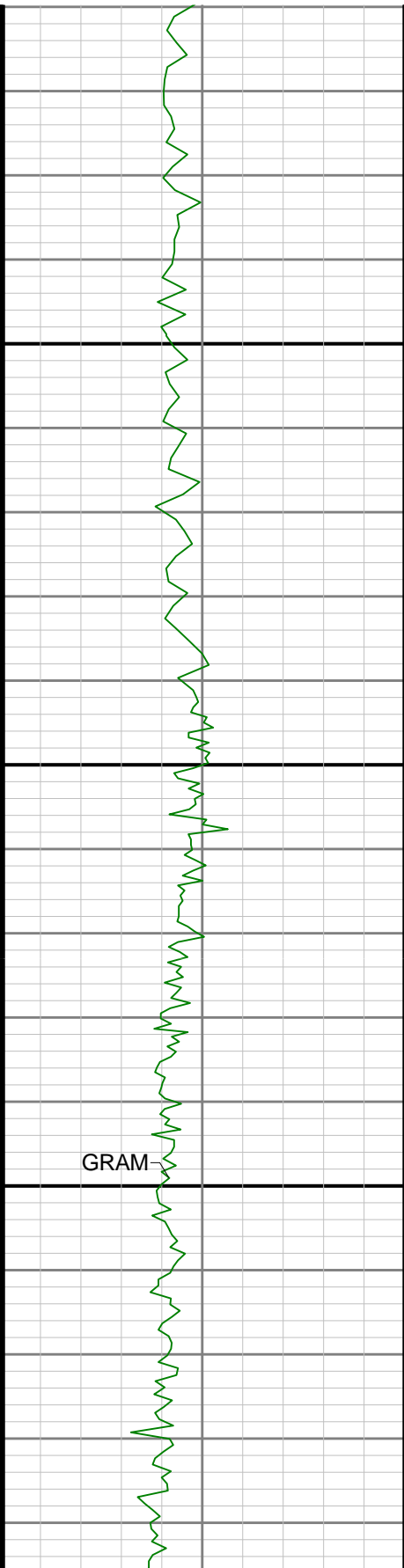




5700

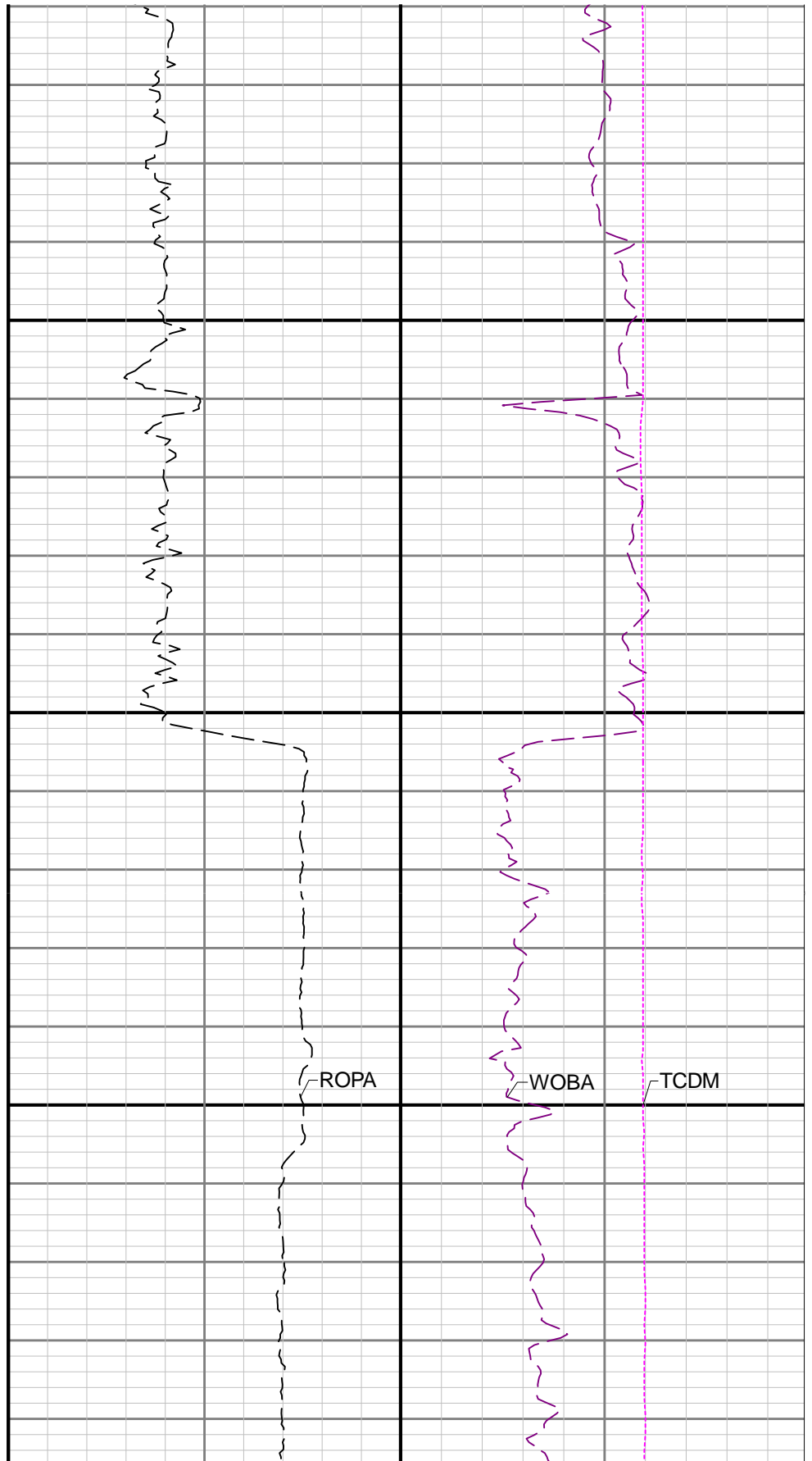
5800

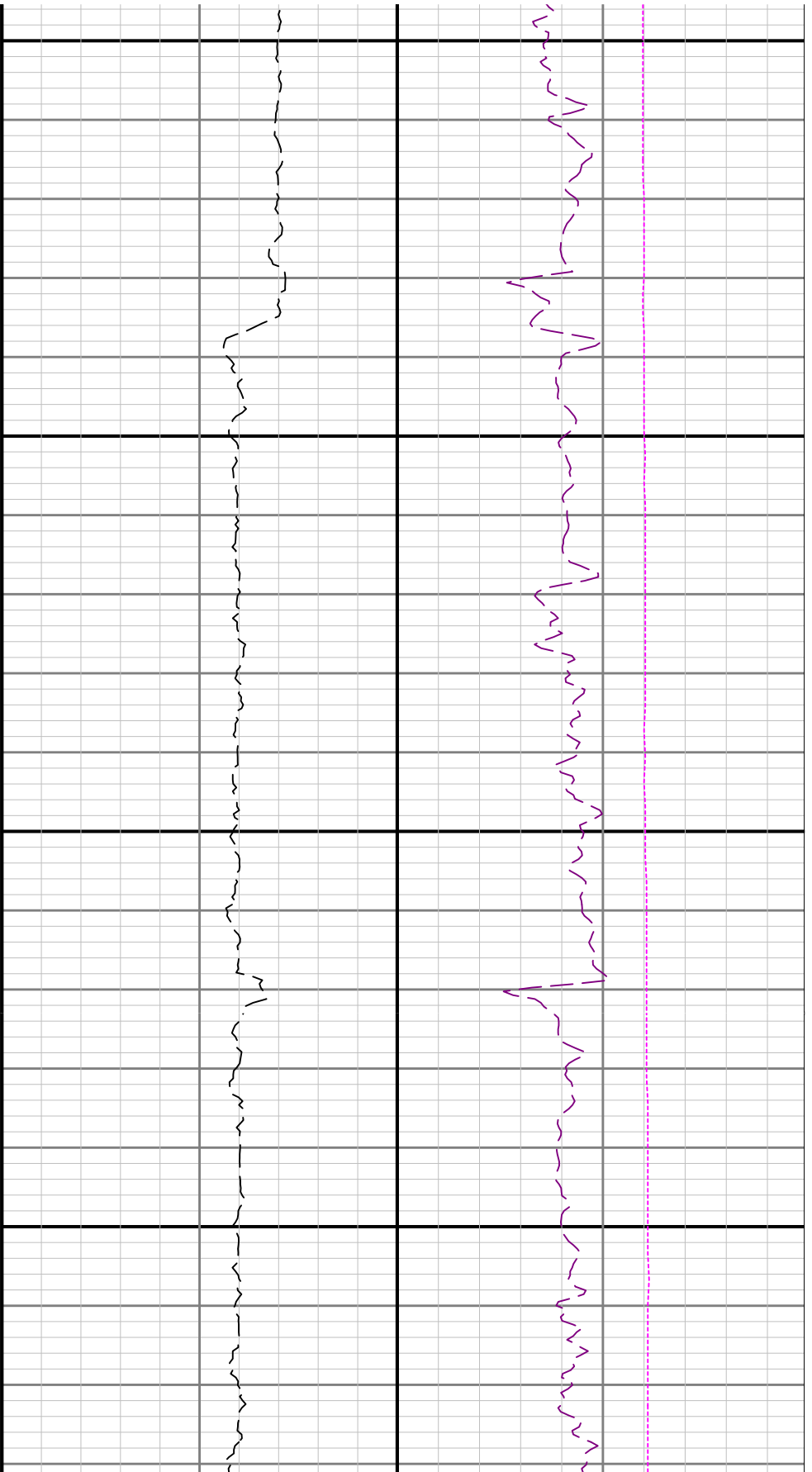




5900

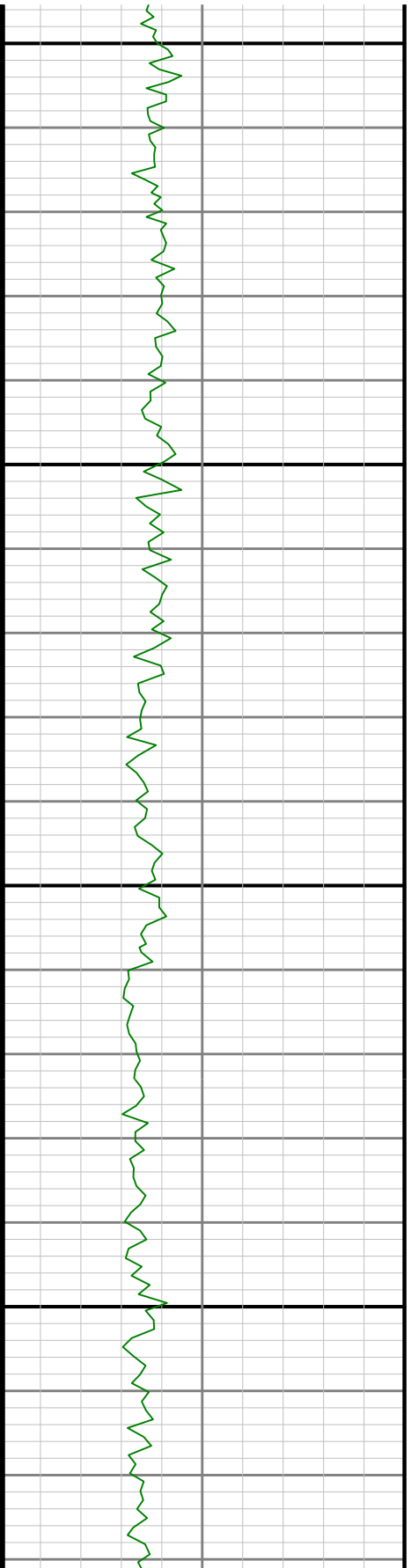
6000

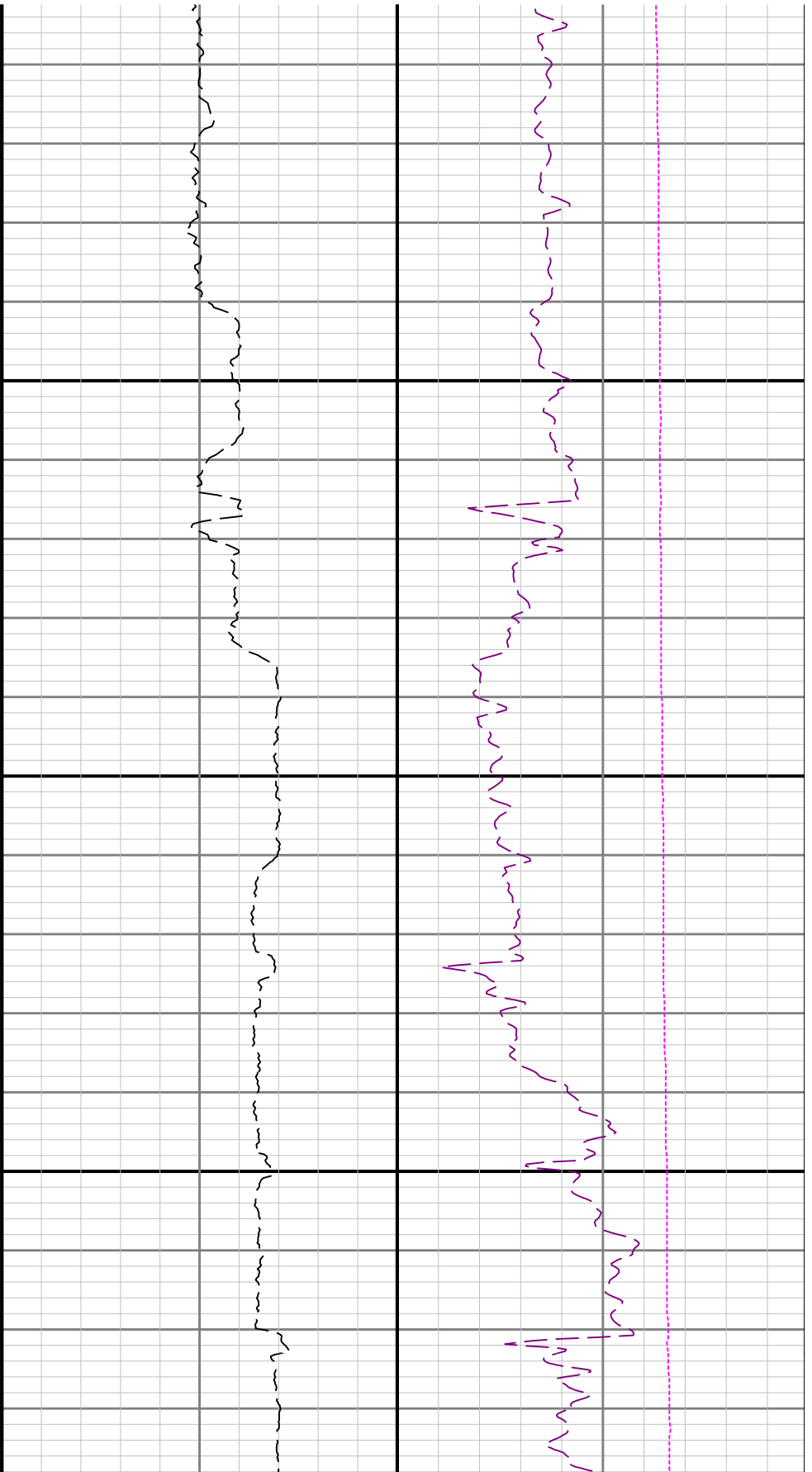




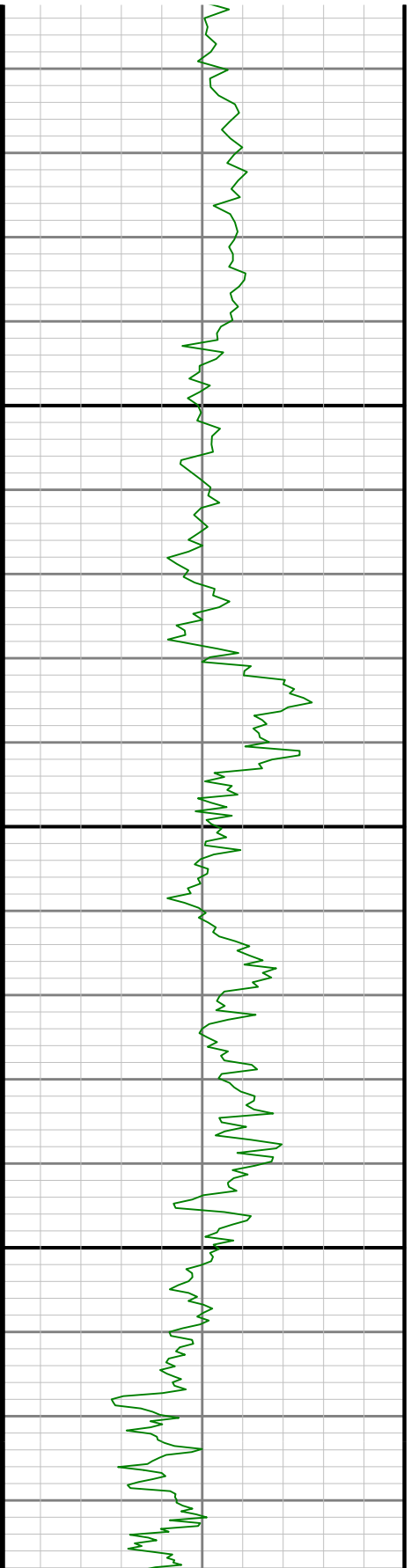
6100

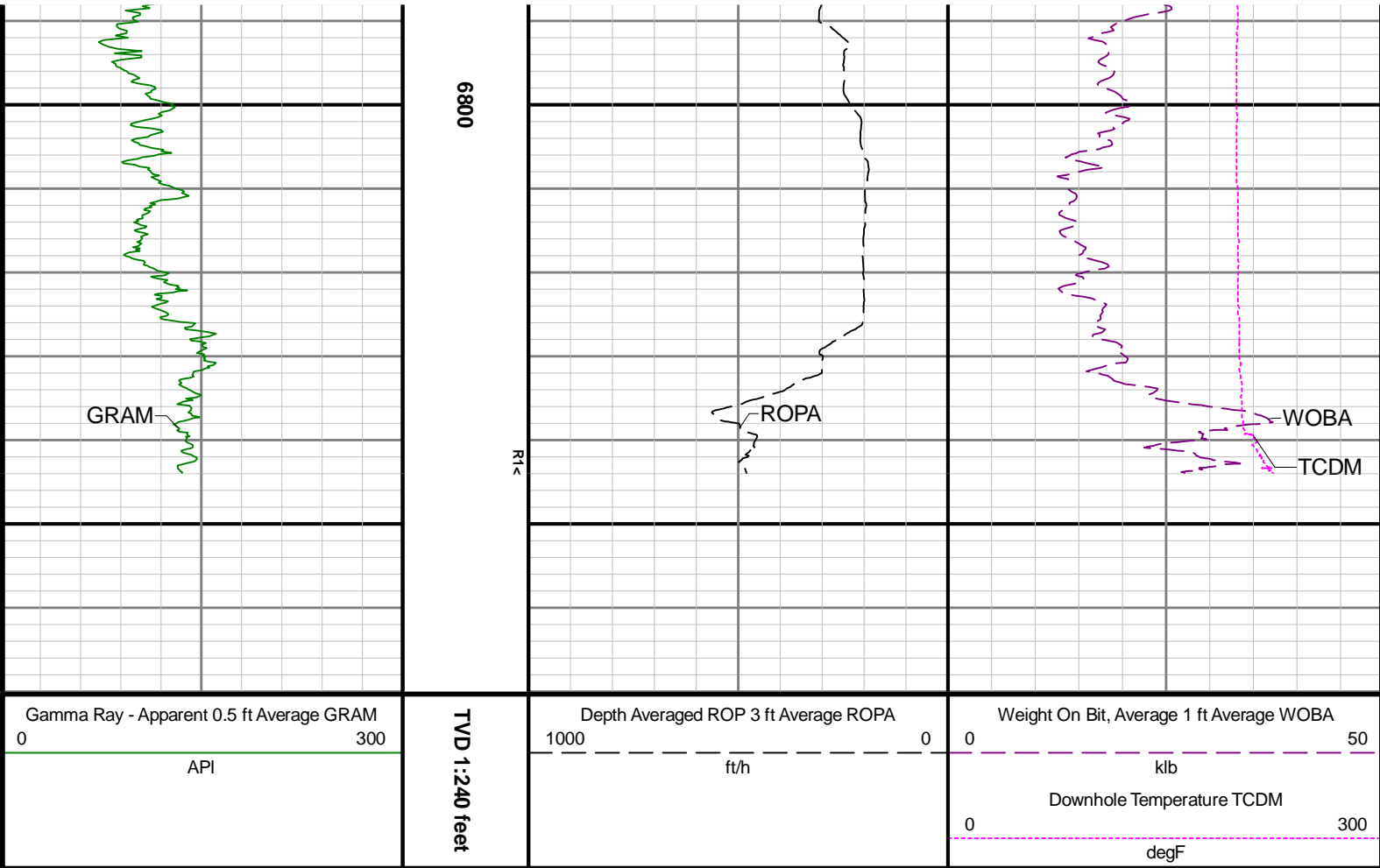
6200





6700





Directional Survey Summary

Latitude:	040° 12' 22.428" N	Longitude:	104° 33' 20.340" W
North Reference:	Grid	Drill Depth Zero:	Rig Floor
Vertical Datum is:	Mean Sea Level	Vertical Datum to DDZ: (ft)	4855.00
Vertical Section North: (ft)	0.00	Vertical Section East: (ft)	0.00
Vertical Section Azimuth: (deg)	6.31		
Grid Convergence: (deg)	-0.61	Magnetic Declination: (deg)	8.09
Total Correction: (deg)	7.48	TVD Calculation Method:	Minimum Curvature
Magnetic Correction:	On	Local Magnetic Field: (nT)	52058
Local Magnetic Dip Angle: (deg)	66.67	Local Gravity Field: (m/s2)	9.800

Tie-In / Projection	Measured Depth (ft)	Inclination (deg)	Azimuth (deg)	Temperature (degF)	North (ft)	East (ft)	True Vertical Depth (ft)	TVD Subsea (ft)	Vertical Section (ft)	Course Length (ft)	Dog Leg Severity (deg/100ft)	Build Rate (deg/100ft)	Turn Rate (deg/100ft)
Tie-In	0.00	0.00	0.00	N/A	0.00	0.00	0.00	-4855.00	0.00	0.00	0.00	0.00	0.00
	50.00	0.27	268.31	N/A	-0.00	-0.12	50.00	-4805.00	-0.02	50.00	0.54	0.54	-183.38
	114.00	0.65	290.70	N/A	0.12	-0.61	114.00	-4741.00	0.05	64.00	0.65	0.59	34.98
	177.00	0.55	267.37	N/A	0.23	-1.24	176.99	-4678.01	0.09	63.00	0.42	-0.16	-37.03
	270.00	0.66	300.07	N/A	0.48	-2.15	269.99	-4585.01	0.24	93.00	0.38	0.12	35.16
	365.00	0.41	288.14	N/A	0.86	-2.95	364.99	-4490.01	0.53	95.00	0.29	-0.26	-12.56
	459.00	0.54	358.05	N/A	1.41	-3.29	458.98	-4396.02	1.04	94.00	0.59	0.14	74.37
	554.00	0.49	24.76	N/A	2.22	-3.13	553.98	-4301.02	1.87	95.00	0.26	-0.05	28.12
	648.00	0.39	58.38	N/A	2.76	-2.69	647.98	-4207.02	2.44	94.00	0.29	-0.11	35.77
	743.00	0.12	286.40	N/A	2.95	-2.51	742.98	-4112.02	2.66	95.00	0.50	-0.28	-138.93
	838.00	0.27	255.86	N/A	2.93	-2.82	837.98	-4017.02	2.60	95.00	0.19	0.16	-32.15
	933.00	0.15	146.53	N/A	2.77	-2.97	932.97	-3922.03	2.43	95.00	0.37	-0.13	-115.08
	1027.00	0.25	196.83	N/A	2.47	-2.96	1026.97	-3828.03	2.13	94.00	0.20	0.11	53.51

		1027.00	0.23	196.63	N/A	2.47	-2.96	1026.97	-3626.03	2.13	94.00	0.20	0.11	53.31
		1122.00	0.10	315.35	N/A	2.33	-3.08	1121.97	-3733.03	1.98	95.00	0.33	-0.16	124.76
		1217.00	0.23	213.18	N/A	2.23	-3.24	1216.97	-3638.03	1.86	95.00	0.28	0.14	-107.55
		1312.00	0.74	236.39	N/A	1.73	-3.86	1311.97	-3543.03	1.30	95.00	0.56	0.54	24.43
		1406.00	0.49	221.29	N/A	1.09	-4.63	1405.96	-3449.04	0.58	94.00	0.31	-0.27	-16.06
		1501.00	0.34	207.88	N/A	0.54	-5.03	1500.96	-3354.04	-0.02	95.00	0.19	-0.16	-14.12
		1596.00	0.25	213.23	N/A	0.12	-5.27	1595.96	-3259.04	-0.46	95.00	0.10	-0.09	5.63
		1690.00	0.10	192.37	N/A	-0.13	-5.40	1689.96	-3165.04	-0.73	94.00	0.17	-0.16	-22.19
		1785.00	0.31	254.08	N/A	-0.29	-5.67	1784.96	-3070.04	-0.91	95.00	0.29	0.22	64.96
		1880.00	0.34	243.95	N/A	-0.48	-6.17	1879.96	-2975.04	-1.16	95.00	0.07	0.03	-10.66
Tie-In		1957.00	0.47	257.95	N/A	-0.65	-6.68	1956.96	-2898.04	-1.38	77.00	0.21	0.17	18.18
		1993.00	0.32	227.31	104.1	-0.75	-6.90	1992.96	-2862.04	-1.50	36.00	0.71	-0.42	-85.11
		2087.00	0.07	222.57	106.8	-0.97	-7.13	2086.95	-2768.05	-1.74	94.00	0.27	-0.27	-5.04
		2182.00	0.82	46.47	112.2	-0.54	-6.68	2181.95	-2673.05	-1.27	95.00	0.94	0.79	-185.37
		2371.00	0.23	27.87	114.9	0.73	-5.52	2370.94	-2484.06	0.11	189.00	0.32	-0.31	-9.84
		2466.00	1.60	139.45	120.3	-0.11	-4.57	2465.93	-2389.07	-0.61	95.00	1.79	1.44	117.45
		2561.00	2.84	146.02	125.7	-3.07	-2.39	2560.86	-2294.14	-3.32	95.00	1.33	1.31	6.92
		2655.00	5.64	147.93	128.4	-8.92	1.36	2654.59	-2200.41	-8.72	94.00	2.98	2.98	2.03
		2750.00	8.24	150.70	128.4	-18.81	7.17	2748.89	-2106.11	-17.91	95.00	2.76	2.74	2.92
		2845.00	11.29	150.95	131.1	-32.88	15.02	2842.50	-2012.50	-31.03	95.00	3.21	3.21	0.26
		2940.00	12.59	153.15	133.8	-50.25	24.21	2935.44	-1919.56	-47.28	95.00	1.45	1.37	2.32
		3034.00	14.55	154.61	133.8	-70.06	33.91	3026.82	-1828.18	-65.91	94.00	2.12	2.09	1.55
		3129.00	16.59	152.78	136.5	-92.90	45.23	3118.32	-1736.68	-87.37	95.00	2.21	2.15	-1.93
		3224.00	17.38	149.04	136.5	-117.13	58.73	3209.18	-1645.82	-109.97	95.00	1.42	0.83	-3.94
		3319.00	18.94	145.07	136.5	-141.94	74.86	3299.45	-1555.55	-132.85	95.00	2.10	1.64	-4.18
		3413.00	18.51	140.73	139.2	-166.00	93.04	3388.48	-1466.52	-154.77	94.00	1.55	-0.46	-4.62
		3508.00	21.07	137.92	141.9	-190.35	114.03	3477.86	-1377.14	-176.67	95.00	2.87	2.69	-2.96
		3697.00	23.45	134.63	144.6	-242.00	163.57	3652.77	-1202.23	-222.56	189.00	1.42	1.26	-1.74
		3792.00	25.34	134.73	147.3	-269.59	191.47	3739.29	-1115.71	-246.91	95.00	1.99	1.99	0.11
		3886.00	28.94	136.97	147.3	-300.38	221.29	3822.93	-1032.07	-274.24	94.00	3.98	3.83	2.38
		3981.00	29.05	140.90	150.0	-335.09	251.52	3906.03	-948.97	-305.41	95.00	2.01	0.12	4.14
		4076.00	28.70	148.33	150.0	-372.41	278.05	3989.24	-865.76	-339.59	95.00	3.79	-0.37	7.82
		4170.00	28.80	155.46	152.7	-412.23	299.32	4071.68	-783.32	-376.83	94.00	3.65	0.11	7.59
		4265.00	28.95	158.24	155.4	-454.40	317.34	4154.87	-700.13	-416.77	95.00	1.42	0.16	2.93
		4360.00	28.66	159.25	155.4	-497.06	333.94	4238.12	-616.88	-457.35	95.00	0.60	-0.31	1.06
		4454.00	28.57	166.32	155.4	-539.99	347.24	4320.66	-534.34	-498.55	94.00	3.60	-0.10	7.52
		4549.00	29.27	166.04	155.4	-584.60	358.22	4403.81	-451.19	-541.69	95.00	0.75	0.74	-0.29
		4643.00	29.57	161.82	158.1	-628.94	371.00	4485.70	-369.30	-584.36	94.00	2.23	0.32	-4.49
		4738.00	29.53	155.38	158.1	-672.51	388.07	4568.36	-286.64	-625.78	95.00	3.34	-0.04	-6.78
		4833.00	29.35	152.62	160.8	-714.47	408.53	4651.10	-203.90	-665.24	95.00	1.44	-0.19	-2.91
		4928.00	29.33	148.38	160.8	-754.96	431.44	4733.92	-121.08	-702.97	95.00	2.19	-0.02	-4.46
		5022.00	29.42	142.89	160.8	-792.98	457.45	4815.85	-39.15	-737.90	94.00	2.87	0.10	-5.84
		5117.00	28.37	142.39	163.5	-829.47	485.30	4899.03	44.03	-771.11	95.00	1.13	-1.11	-0.53
		5212.00	29.22	150.34	163.5	-867.51	510.56	4982.31	127.31	-806.14	95.00	4.13	0.89	8.37
		5307.00	29.29	150.79	166.2	-907.95	533.37	5065.19	210.19	-843.82	95.00	0.24	0.07	0.47
		5401.00	29.35	148.91	166.2	-947.74	556.49	5147.15	292.15	-880.84	94.00	0.98	0.06	-2.00
		5496.00	29.33	147.10	168.9	-987.22	581.15	5229.97	374.97	-917.36	95.00	0.93	-0.02	-1.91
		5591.00	29.32	145.05	168.9	-1025.82	607.12	5312.80	457.80	-952.88	95.00	1.06	-0.01	-2.16
		5685.00	29.32	143.24	171.6	-1063.12	634.07	5394.76	539.76	-986.99	94.00	0.94	0.00	-1.93
		5780.00	28.93	140.77	171.6	-1099.56	662.53	5477.75	622.75	-1020.08	95.00	1.33	-0.41	-2.60
		5875.00	29.23	141.82	171.6	-1135.59	691.40	5560.77	705.77	-1052.72	95.00	0.62	0.32	1.11
		5969.00	29.21	134.86	174.3	-1169.82	721.85	5642.84	787.84	-1083.40	94.00	3.61	-0.02	-7.40
		6064.00	29.24	135.57	174.3	-1202.74	754.53	5725.74	870.74	-1112.53	95.00	0.37	0.03	0.75
		6158.00	29.03	135.21	177.0	-1235.32	786.66	5807.85	952.85	-1141.38	94.00	0.29	-0.22	-0.38
		6253.00	28.61	139.51	177.0	-1268.98	817.68	5891.09	1036.09	-1171.43	95.00	2.23	-0.44	4.53
		6348.00	29.25	139.94	177.0	-1304.05	847.38	5974.24	1119.24	-1203.01	95.00	0.71	0.67	0.45
		6443.00	21.76	119.53	179.7	-1330.58	877.74	6060.08	1205.08	-1226.05	95.00	12.05	-7.88	-21.48
		6538.00	17.30	98.78	182.5	-1341.43	907.07	6149.70	1294.70	-1233.61	95.00	8.61	-4.69	-21.84
		6632.00	16.30	86.30	182.5	-1342.71	934.06	6239.72	1384.72	-1231.92	94.00	3.97	-1.06	-13.28
		6727.00	17.67	78.01	182.5	-1338.86	961.47	6330.58	1475.58	-1225.07	95.00	2.93	1.44	-8.73
		6822.00	23.85	49.59	182.5	-1323.36	990.30	6419.59	1564.59	-1206.50	95.00	12.26	6.51	-29.92
		6916.00	29.19	28.97	185.2	-1290.89	1015.95	6503.85	1648.85	-1171.41	94.00	11.25	5.68	-21.94
		7011.00	40.07	21.40	187.0	-1242.00	1028.45	6581.04	1726.04	-1120.35	95.00	12.28	11.45	7.87

	7011.00	40.07	21.49	187.9	-1242.00	1038.45	6581.94	1726.94	-1120.35	95.00	12.28	11.45	-7.87
	7105.00	46.22	23.00	190.6	-1182.56	1062.81	6650.49	1795.49	-1058.58	94.00	6.63	6.54	1.61
	7200.00	54.12	19.69	193.3	-1114.63	1089.23	6711.30	1856.30	-988.17	95.00	8.73	8.32	-3.48
	7295.00	62.20	12.97	196.0	-1037.26	1111.68	6761.42	1906.42	-908.79	95.00	10.41	8.51	-7.07
	7390.00	69.12	4.96	198.7	-951.88	1124.98	6800.60	1945.60	-822.47	95.00	10.58	7.28	-8.43
	7485.00	78.26	357.31	201.4	-860.89	1126.64	6827.29	1972.29	-731.85	95.00	12.33	9.62	-8.05
	7579.00	88.55	356.88	201.4	-767.76	1121.91	6838.07	1983.07	-639.80	94.00	10.96	10.95	-0.46
	7674.00	90.00	357.20	204.1	-672.90	1117.01	6839.27	1984.27	-546.05	95.00	1.56	1.53	0.34
	7769.00	89.94	357.47	206.8	-578.00	1112.59	6839.32	1984.32	-452.22	95.00	0.29	-0.06	0.28
	7863.00	90.03	355.93	209.5	-484.16	1107.18	6839.35	1984.35	-359.54	94.00	1.64	0.10	-1.64
	7958.00	89.57	355.33	209.5	-389.44	1099.94	6839.68	1984.68	-266.19	95.00	0.80	-0.48	-0.63
	8053.00	89.78	354.73	212.2	-294.80	1091.71	6840.22	1985.22	-173.02	95.00	0.67	0.22	-0.63
	8148.00	89.69	354.46	209.5	-200.22	1082.76	6840.66	1985.66	-80.00	95.00	0.30	-0.09	-0.28
	8242.00	89.66	355.29	212.2	-106.60	1074.36	6841.19	1986.19	12.13	94.00	0.88	-0.03	0.88
	8337.00	89.69	355.34	214.9	-11.92	1066.61	6841.73	1986.73	105.38	95.00	0.06	0.03	0.05
	8432.00	89.78	357.02	214.9	82.87	1060.28	6842.17	1987.17	198.90	95.00	1.77	0.09	1.77
	8527.00	89.63	357.04	217.6	177.74	1055.35	6842.66	1987.66	292.65	95.00	0.16	-0.16	0.02
	8622.00	89.78	359.66	217.6	272.69	1052.62	6843.15	1988.15	386.73	95.00	2.76	0.16	2.76
	8717.00	90.00	2.91	220.3	367.65	1054.75	6843.33	1988.33	481.35	95.00	3.43	0.23	3.42
	8812.00	90.00	4.97	220.3	462.42	1061.28	6843.33	1988.33	576.26	95.00	2.17	0.00	2.17
	8906.00	90.00	4.64	220.3	556.09	1069.15	6843.33	1988.33	670.23	94.00	0.35	0.00	-0.35
	9001.00	90.06	4.40	220.3	650.80	1076.64	6843.28	1988.28	765.18	95.00	0.26	0.06	-0.25
	9096.00	89.91	2.37	220.3	745.63	1082.25	6843.31	1988.31	860.06	95.00	2.14	-0.16	-2.14
	9191.00	89.78	0.05	220.3	840.60	1084.25	6843.56	1988.56	954.67	95.00	2.45	-0.14	-2.44
	9286.00	89.88	357.78	223.0	935.57	1082.45	6843.84	1988.84	1048.88	95.00	2.39	0.11	-2.39
	9380.00	89.91	356.73	223.0	1029.46	1077.95	6844.02	1989.02	1141.70	94.00	1.12	0.03	-1.12
	9475.00	89.91	355.46	225.7	1124.24	1071.48	6844.17	1989.17	1235.20	95.00	1.34	0.00	-1.34
	9570.00	89.97	355.65	225.7	1218.96	1064.12	6844.27	1989.27	1328.53	95.00	0.21	0.06	0.20
	9664.00	90.03	355.39	228.4	1312.67	1056.78	6844.27	1989.27	1420.86	94.00	0.28	0.06	-0.28
	9759.00	89.97	355.69	228.4	1407.38	1049.39	6844.27	1989.27	1514.19	95.00	0.32	-0.06	0.32
	9854.00	90.18	357.20	231.1	1502.20	1043.50	6844.14	1989.14	1607.78	95.00	1.60	0.22	1.59
	9948.00	90.15	359.76	231.1	1596.15	1041.01	6843.87	1988.87	1700.90	94.00	2.72	-0.03	2.72
	10043.00	90.09	4.43	233.8	1691.06	1044.48	6843.67	1988.67	1795.62	95.00	4.92	-0.06	4.92
	10138.00	90.06	8.01	233.8	1785.49	1054.77	6843.55	1988.55	1890.60	95.00	3.77	-0.03	3.77
	10233.00	90.03	8.16	233.8	1879.55	1068.13	6843.47	1988.47	1985.55	95.00	0.16	-0.03	0.16
	10327.00	90.12	4.94	233.8	1972.92	1078.85	6843.35	1988.35	2079.54	94.00	3.43	0.10	-3.43
	10422.00	90.12	2.13	236.5	2067.73	1084.71	6843.15	1988.15	2174.42	95.00	2.96	0.00	-2.96
	10517.00	90.09	0.98	236.5	2162.69	1087.29	6842.98	1987.98	2269.09	95.00	1.21	-0.03	-1.21
	10706.00	90.15	358.34	239.2	2351.67	1086.16	6842.58	1987.58	2456.80	189.00	1.40	0.03	-1.40
	10801.00	90.22	355.22	239.2	2446.51	1080.83	6842.27	1987.27	2550.48	95.00	3.29	0.07	-3.28
	10896.00	90.03	357.69	241.9	2541.32	1074.96	6842.07	1987.07	2644.07	95.00	2.61	-0.20	2.60
	10991.00	89.97	1.13	241.9	2636.30	1073.98	6842.07	1987.07	2738.37	95.00	3.62	-0.06	3.62
	11085.00	89.94	359.94	241.9	2730.30	1074.86	6842.14	1987.14	2831.89	94.00	1.27	-0.03	-1.27
	11180.00	89.94	354.46	241.9	2825.15	1070.22	6842.24	1987.24	2925.66	95.00	5.77	-0.00	-5.77
	11275.00	89.91	354.02	52.7	2919.67	1060.68	6842.36	1987.36	3018.55	95.00	0.46	-0.03	-0.46
	11369.00	90.00	355.92	244.6	3013.30	1052.44	6842.44	1987.44	3110.72	94.00	2.02	0.10	2.02
	11464.00	89.78	355.67	244.6	3108.04	1045.47	6842.62	1987.62	3204.12	95.00	0.35	-0.23	-0.26
	11559.00	89.91	354.52	244.6	3202.69	1037.35	6842.88	1987.88	3297.30	95.00	1.22	0.14	-1.21
	11654.00	89.82	355.66	244.6	3297.34	1029.22	6843.10	1988.10	3390.49	95.00	1.20	-0.09	1.20
	11749.00	90.00	359.25	247.3	3392.23	1025.00	6843.25	1988.25	3484.34	95.00	3.78	0.19	3.78
	11844.00	90.09	2.93	241.9	3487.20	1026.81	6843.18	1988.18	3578.93	95.00	3.87	0.09	3.87
	11939.00	90.00	3.54	244.6	3582.05	1032.17	6843.10	1988.10	3673.79	95.00	0.65	-0.09	0.64
	12033.00	90.00	3.20	244.6	3675.89	1037.70	6843.10	1988.10	3767.67	94.00	0.36	0.00	-0.36
	12128.00	89.91	2.52	247.3	3770.77	1042.44	6843.18	1988.18	3862.49	95.00	0.72	-0.09	-0.72
	12222.00	90.00	0.95	247.3	3864.72	1045.28	6843.25	1988.25	3956.19	94.00	1.67	0.10	-1.67
	12317.00	90.00	358.39	247.3	3959.71	1044.74	6843.25	1988.25	4050.55	95.00	2.69	0.00	-2.69
	12412.00	90.00	358.40	247.3	4054.67	1042.08	6843.25	1988.25	4144.64	95.00	0.01	0.00	0.01
	12506.00	90.00	358.52	247.3	4148.64	1039.55	6843.25	1988.25	4237.76	94.00	0.13	0.00	0.13
	12601.00	89.82	359.83	247.3	4243.63	1038.18	6843.40	1988.40	4332.02	95.00	1.39	-0.19	1.38
	12696.00	90.00	0.97	247.3	4338.62	1038.84	6843.55	1988.55	4426.52	95.00	1.21	0.19	1.20
	12791.00	89.91	0.97	247.3	4433.61	1040.45	6843.62	1988.62	4521.10	95.00	0.09	-0.09	0.00
	12885.00	89.88	0.36	250.0	4527.60	1041.54	6843.79	1988.79	4614.65	94.00	0.65	-0.03	-0.65
	12980.00	89.84	0.75	250.0	4622.59	1042.58	6843.84	1988.84	4708.47	95.00	0.45	0.03	0.45

	12980.00	89.94	0.79	250.0	4622.60	1042.50	6843.94	1988.94	4709.17	95.00	0.46	0.06	0.45
	13075.00	89.97	1.48	250.0	4717.58	1044.38	6844.02	1989.02	4803.78	95.00	0.73	0.03	0.73
	13169.00	89.91	1.65	250.0	4811.54	1046.95	6844.12	1989.12	4897.46	94.00	0.19	-0.06	0.18
	13264.00	90.03	1.58	252.7	4906.51	1049.62	6844.17	1989.17	4992.14	95.00	0.15	0.13	-0.07
	13359.00	90.00	3.19	252.7	5001.42	1053.58	6844.14	1989.14	5086.92	95.00	1.70	-0.03	1.69
	13454.00	90.03	1.94	252.7	5096.32	1057.83	6844.12	1989.12	5181.71	95.00	1.32	0.03	-1.32
	13548.00	90.06	357.96	252.7	5190.30	1057.75	6844.04	1989.04	5275.11	94.00	4.23	0.03	-4.23
	13643.00	90.09	356.45	255.4	5285.19	1053.11	6843.92	1988.92	5368.91	95.00	1.59	0.03	-1.59
	13738.00	90.18	357.14	258.1	5380.04	1047.80	6843.70	1988.70	5462.61	95.00	0.73	0.09	0.73
	13833.00	90.03	357.75	187.9	5474.94	1043.57	6843.52	1988.52	5556.47	95.00	0.66	-0.16	0.64
	13927.00	90.03	357.92	255.4	5568.88	1040.02	6843.47	1988.47	5649.45	94.00	0.18	0.00	0.18
	14022.00	90.00	358.27	258.1	5663.82	1036.86	6843.45	1988.45	5743.47	95.00	0.37	-0.03	0.37
	14117.00	90.06	359.22	260.8	5758.80	1034.78	6843.40	1988.40	5837.64	95.00	1.00	0.06	1.00
	14212.00	90.12	358.91	260.8	5853.79	1033.23	6843.25	1988.25	5931.88	95.00	0.33	0.06	-0.33
	14306.00	90.12	0.57	260.8	5947.78	1032.80	6843.05	1988.05	6025.26	94.00	1.77	0.00	1.77
	14401.00	90.22	4.12	258.1	6042.69	1036.69	6842.77	1987.77	6120.02	95.00	3.74	0.11	3.74
	14496.00	90.06	7.05	260.8	6137.23	1045.93	6842.54	1987.54	6215.00	95.00	3.09	-0.17	3.08
	14591.00	90.03	5.15	260.8	6231.68	1056.03	6842.46	1987.46	6310.00	95.00	2.00	-0.03	-2.00
	14686.00	89.94	3.98	260.8	6326.38	1063.59	6842.49	1987.49	6404.95	95.00	1.24	-0.09	-1.23
	14781.00	90.03	2.99	260.8	6421.20	1069.36	6842.51	1987.51	6499.83	95.00	1.05	0.09	-1.04
	14875.00	89.97	1.83	260.8	6515.12	1073.31	6842.51	1987.51	6593.61	94.00	1.24	-0.06	-1.23
	14970.00	89.91	0.39	123.0	6610.10	1075.15	6842.61	1987.61	6688.22	95.00	1.52	-0.06	-1.52
	15065.00	90.06	1.04	260.8	6705.09	1076.34	6842.64	1987.64	6782.77	95.00	0.70	0.16	0.68
	15160.00	90.12	2.10	260.8	6800.05	1078.94	6842.49	1987.49	6877.44	95.00	1.12	0.06	1.12
	15255.00	89.97	359.90	260.8	6895.03	1080.60	6842.41	1987.41	6972.03	95.00	2.32	-0.16	-2.32
	15349.00	89.94	358.41	260.8	6989.02	1079.21	6842.49	1987.49	7065.29	94.00	1.59	-0.03	-1.59
	15444.00	89.88	355.83	260.8	7083.89	1074.44	6842.64	1987.64	7159.07	95.00	2.72	-0.06	-2.72
	15539.00	90.00	356.76	263.5	7178.69	1068.30	6842.74	1987.74	7252.62	95.00	0.99	0.13	0.98
	15633.00	90.06	357.80	260.8	7272.59	1063.84	6842.69	1987.69	7345.45	94.00	1.11	0.06	1.11
	15728.00	89.88	358.10	263.5	7367.52	1060.44	6842.74	1987.74	7439.44	95.00	0.37	-0.19	0.32
	15823.00	89.82	358.17	263.5	7462.47	1057.35	6842.98	1987.98	7533.48	95.00	0.10	-0.06	0.07
	15918.00	89.94	357.93	263.5	7557.42	1054.12	6843.18	1988.18	7627.49	95.00	0.28	0.13	-0.25
	16012.00	89.91	358.07	263.5	7651.36	1050.84	6843.31	1988.31	7720.50	94.00	0.15	-0.03	0.15
	16107.00	90.00	358.14	263.5	7746.31	1047.70	6843.38	1988.38	7814.53	95.00	0.12	0.09	0.07
	16202.00	89.91	358.44	314.9	7841.27	1044.86	6843.46	1988.46	7908.60	95.00	0.33	-0.09	0.32
	16297.00	90.03	358.67	260.8	7936.24	1042.47	6843.51	1988.51	8002.73	95.00	0.27	0.13	0.24
	16391.00	89.91	359.10	260.8	8030.22	1040.64	6843.55	1988.55	8095.94	94.00	0.47	-0.13	0.46
	16486.00	90.00	359.78	263.5	8125.21	1039.71	6843.63	1988.63	8190.26	95.00	0.72	0.09	0.72
	16581.00	90.06	0.02	263.5	8220.21	1039.54	6843.58	1988.58	8284.67	95.00	0.26	0.06	0.25
	16675.00	89.91	359.42	263.5	8314.21	1039.08	6843.60	1988.60	8378.05	94.00	0.66	-0.16	-0.64
	16771.00	89.85	357.97	266.2	8410.18	1036.90	6843.81	1988.81	8473.20	96.00	1.51	-0.06	-1.51
	16865.00	90.03	356.77	266.2	8504.08	1032.59	6843.90	1988.90	8566.05	94.00	1.29	0.19	-1.28
	16960.00	90.06	354.89	269.0	8598.83	1025.68	6843.83	1988.83	8659.46	95.00	1.98	0.03	-1.98
	17055.00	89.94	355.11	269.0	8693.47	1017.40	6843.83	1988.83	8752.62	95.00	0.26	-0.13	0.23
	17150.00	89.94	356.21	271.7	8788.19	1010.21	6843.93	1988.93	8845.98	95.00	1.16	0.00	1.16
	17245.00	89.91	356.64	271.7	8883.01	1004.28	6844.05	1989.05	8939.57	95.00	0.45	-0.03	0.45
	17340.00	90.06	356.80	271.7	8977.85	998.85	6844.08	1989.08	9033.24	95.00	0.23	0.16	0.17
	17434.00	89.97	358.67	274.4	9071.77	995.13	6844.05	1989.05	9126.19	94.00	1.99	-0.10	1.99
	17529.00	89.94	1.89	274.4	9166.76	995.60	6844.13	1989.13	9220.65	95.00	3.39	-0.03	3.39
	17624.00	90.03	2.48	274.4	9261.69	999.22	6844.15	1989.15	9315.40	95.00	0.63	0.09	0.62
	17719.00	90.06	0.52	274.4	9356.65	1001.71	6844.08	1989.08	9410.06	95.00	2.06	0.03	-2.06
	17786.00	89.94	359.53	331.1	9423.65	1001.74	6844.08	1989.08	9476.66	67.00	1.49	-0.18	-1.48
Projection	17810.00	89.94	359.53	N/A	9447.65	1001.54	6844.10	1989.10	9500.49	24.00	0.00	0.01	-0.00