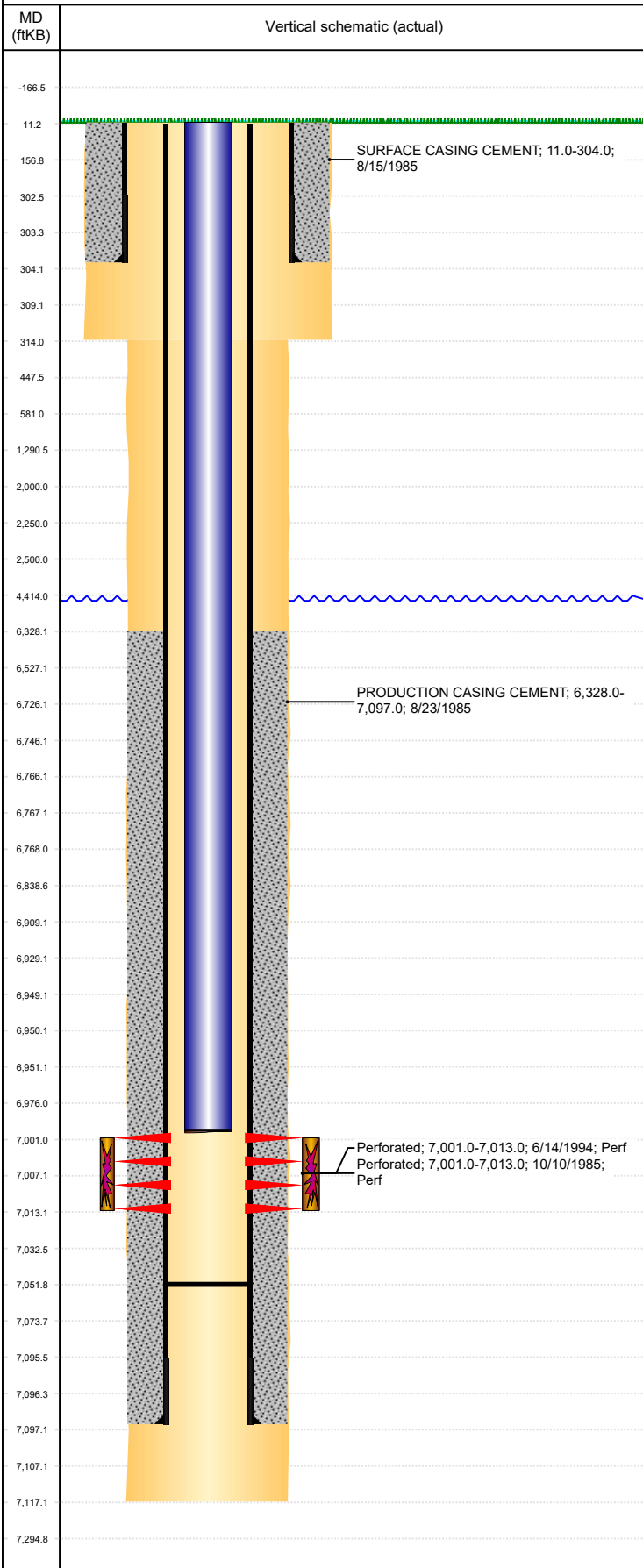


**Well Name: WILMOTH 06-02**

VERTICAL, ORIGINAL HOLE, 6/2/2019 1:44:09 PM



Well Header									
API 05-123-12538		Business Unit DJ BASIN			District 15		Well Config VERTICAL		
KB - GL / MSL (ft... 11.00		Spud Date 8/14/1985		P & A Date		Well Production Status SI			SoRT No
Comment									
Surface Location (Congressional)									
Qtr 3 NE	Qtr 4 NE	Section 6	Twtnshp 4	Twtnsh... N	Range 64	Rng E/... W	Actual Latitude (°) 40.34611500	Actual Longitude (°) -104.58586100	
Wellbore Sections									
Section Des			Size (in)			Act Top, MD (ftKB)		Act Btm, MD (ftKB)	
SURFACE			12 1/4			11		314	
PRODUCTION			7 7/8			314		7,117	
Casing Strings									
Csg Des			Run Date		OD (in)	Wt/Len (lb/ft)	Grade	Top, MD (ftKB)	MD (ftKB)
Surface			8/15/1985		8 5/8	24.00		11.0	304.0
Production			8/23/1985		4 1/2	11.60	N-80	11.0	7,097.0
Cement									
Des					Start Date		Top (ftKB)		Btm (ftKB)
SURFACE CASING CEMENT					8/15/1985		11.0		304.0
PRODUCTION CASING CEMENT					8/23/1985		6,328.0		7,097.0
Zone Statuses									
Zone Name	Status Date	Status	Fluid Type	Job				Prod Method	
CODELL	9/22/2016	SI	Oil Water					Flowing Flowing	
CODELL	12/11/2017	SI							
NIOBRARA	10/28/1985	PR							
NIOBRARA	6/17/2010	PR							
Perforation Data									
Linked Zone		Bnch/Stg	Entered Shot Total	Top (ftKB)		Btm (ftKB)		Date	
CODELL, ORIGINAL HOLE			24	7,001.00		7,013.00		10/10/1985	
CODELL, ORIGINAL HOLE			48	7,001.00		7,013.00		6/14/1994	
Stimulation Intervals									
Zone				Start Date		Top (ftKB)		Btm (ftKB)	
CODELL, ORIGINAL HOLE				10/12/1985		7,001.0		7,013.0	
CODELL, ORIGINAL HOLE				6/15/1994		7,001.0		7,013.0	
Other In Hole									
Run Date		Des				OD (in)	Top (ftKB)	Btm (ftKB)	
Logs									
Date		Type				Top, MD (ftKB)		Btm, MD (ftKB)	
8/22/1985		COMPENSATED DENSITY				4,250.0		7,138.0	
8/22/1985		INDUCTION				304.0		7,138.0	
8/22/1985		WELLSITE SANDSTONE ANALYSIS				6,750.0		7,120.0	
8/28/1985		CEMENT BOND				6,268.0		7,080.0	
4/7/2011		GYRO				10.0		6,950.0	
Plug Back Total Depths									
Date		Type		Com				Depth (ftKB)	
8/23/1985		GUIDE SHOE						7,052.0	