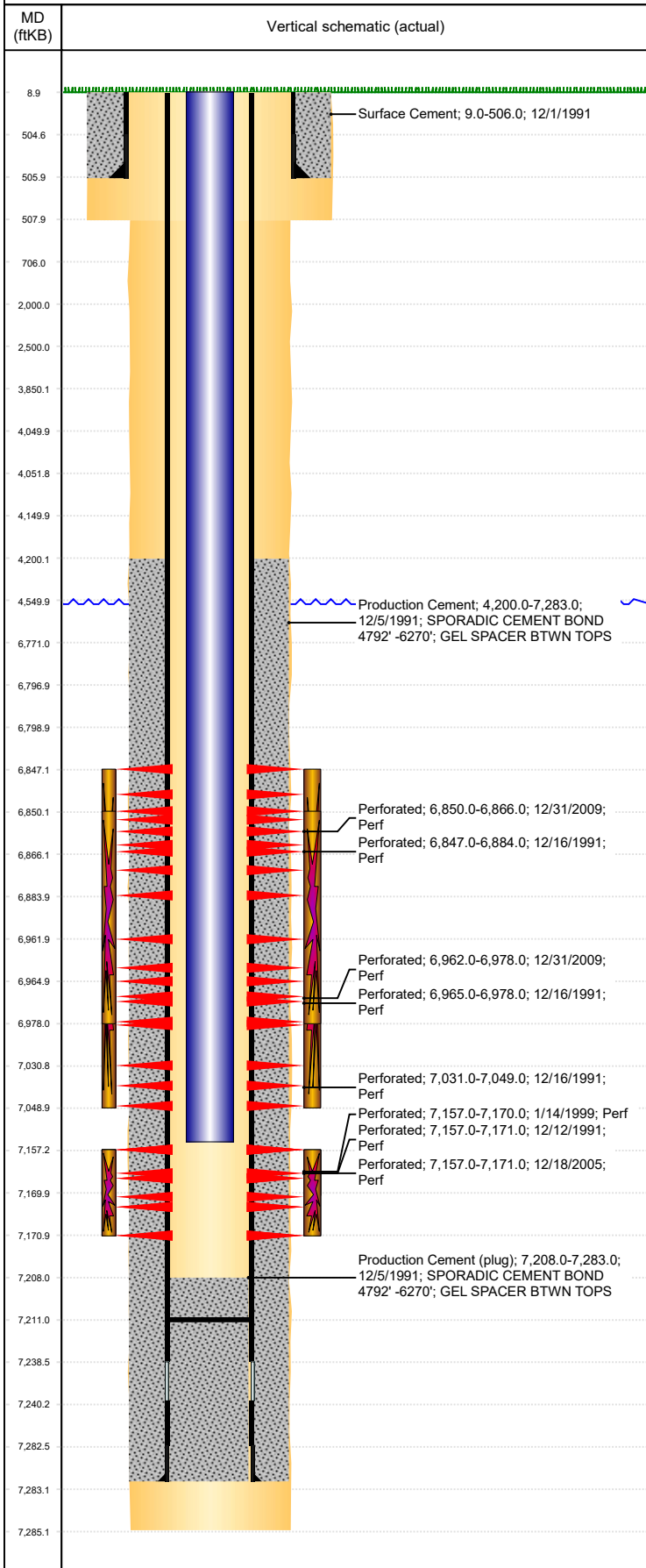


**Well Name: UPRC 07-03G**

VERTICAL, ORIGINAL HOLE, 6/2/2019 1:17:36 PM



Well Header									
API 05-123-15155		Business Unit DJ BASIN		District 15		Well Config VERTICAL			
KB - GL / MSL (ft... 9.00		Spud Date 11/24/1991		P & A Date		Well Production Status SI			SoRT No
Comment SPORADIC CEMENT BOND 4792' -6270'									
Surface Location (Congressional)									
Qtr 3 NE	Qtr 4 NW	Section 7	Twنشp 4	Twنش... N	Range 65	Rng E/... W	Actual Latitude (°) 40.33235776	Actual Longitude (°) -104.70886573	
Wellbore Sections									
Section Des			Size (in)			Act Top, MD (ftKB)		Act Btm, MD (ftKB)	
SURFACE			12 1/4			9		508	
PRODUCTION			7 7/8			508		7,285	
Casing Strings									
Csg Des			Run Date		OD (in)	Wt/Len (lb/ft)	Grade	Top, MD (ftKB)	MD (ftKB)
Surface			12/1/1991		8 5/8	24.00	WC-50	9.0	506.0
Production			12/4/1991		4 1/2	11.60	M-75	9.0	7,283.0
Cement									
Des					Start Date		Top (ftKB)		Btm (ftKB)
Surface Cement					12/1/1991		9.0		506.0
Production Cement					12/5/1991		4,200.0		7,283.0
Zone Statuses									
Zone Name	Status Date	Status	Fluid Type	Job				Prod Method	
NIOBRARA	1/23/2010	PR	Water	RE-FRAC, 12/29/2009 07:30				Flowing	
NIOBRARA	1/29/2010	PR							
CODELL	1/29/2010	PR							
CODELL	10/7/2016	SI	Water						
Perforation Data									
Linked Zone		Bnch/Stg	Entered Shot Total	Top (ftKB)		Btm (ftKB)		Date	
NIOBRARA, ORIGINAL HOLE		A	10	6,847.00		6,884.00		12/16/1991	
NIOBRARA, ORIGINAL HOLE		A	32	6,850.00		6,866.00		12/31/2009	
NIOBRARA, ORIGINAL HOLE		B	32	6,962.00		6,978.00		12/31/2009	
NIOBRARA, ORIGINAL HOLE		B	10	6,965.00		6,978.00		12/16/1991	
NIOBRARA, ORIGINAL HOLE		C	8	7,031.00		7,049.00		12/16/1991	
CODELL, ORIGINAL HOLE			26	7,157.00		7,170.00		1/14/1999	
CODELL, ORIGINAL HOLE			56	7,157.00		7,171.00		12/12/1991	
CODELL, ORIGINAL HOLE			82	7,157.00		7,171.00		12/18/2005	
Stimulation Intervals									
Zone				Start Date		Top (ftKB)		Btm (ftKB)	
NIOBRARA, ORIGINAL HOLE				12/17/1991		6,847.0		7,049.0	
NIOBRARA, ORIGINAL HOLE				1/11/2010		6,850.0		6,978.0	
CODELL, ORIGINAL HOLE				12/13/1991		7,157.0		7,171.0	
CODELL, ORIGINAL HOLE				1/19/1999		7,157.0		7,170.0	
CODELL, ORIGINAL HOLE				12/19/2005		7,157.0		7,171.0	
Other In Hole									
Run Date		Des				OD (in)	Top (ftKB)		Btm (ftKB)
5/25/2016		Plunger Lift				1 7/8			
Logs									
Date		Type				Top, MD (ftKB)		Btm, MD (ftKB)	
12/5/1991		COMPENSATED DENSITY				3,600.0		7,249.0	
12/5/1991		INDUCTION				505.0		7,277.0	
12/12/1991		CEMENT BOND				6,960.0		7,183.0	
11/26/2018		GYRO				9.0		7,100.0	
Plug Back Total Depths									
Date		Type		Com				Depth (ftKB)	
12/21/2005		FILL		C/O LAND TBG				7,207.0	
1/20/2010		FILL		C/O LAND TBG				7,211.0	