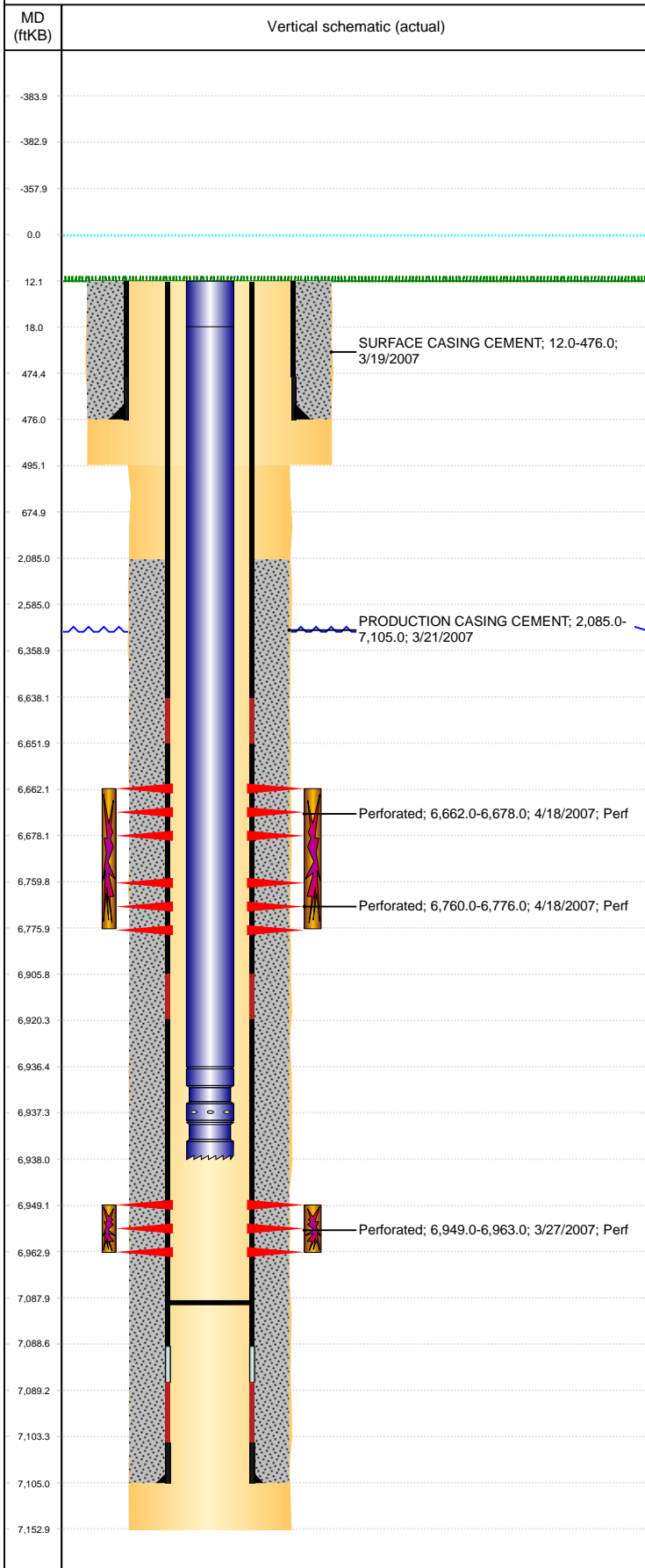


Well Name: NICMOTH C05-19

VERTICAL, ORIGINAL HOLE, 5/31/2019 8:41:09 AM



Well Header									
API 05-123-24522		Business Unit DJ BASIN			District 15		Well Config VERTICAL		
KB - GL / MSL (ft... 12.00		Spud Date 3/18/2007		P & A Date		Well Production Status SI			SoRT No
Comment STATE SHOWS SHUT IN SINCE DEC 2016.									
Surface Location (Congressional)									
Qtr 3 SE	Qtr 4 NW	Section 5	Twonshp 4	Twonsh... N	Range 64	Rng E/... W	Actual Latitude (°) 40.34486605	Actual Longitude (°) -104.57875805	
Wellbore Sections									
Section Des			Size (in)			Act Top, MD (ftKB)		Act Btm, MD (ftKB)	
SURFACE			12 1/4			12		495	
PRODUCTION			7 7/8			495		7,153	
Casing Strings									
Csg Des			Run Date		OD (in)	Wt/Len (lb/ft)	Grade	Top, MD (ftKB)	MD (ftKB)
Surface			3/19/2007		8 5/8	24.00		12.0	476.0
Production			3/21/2007		4 1/2	11.60	M-80	12.0	7,105.0
Cement									
Des					Start Date		Top (ftKB)		Btm (ftKB)
SURFACE CASING CEMENT					3/19/2007		12.0		476.0
PRODUCTION CASING CEMENT					3/21/2007		2,085.0		7,105.0
Zone Statuses									
Zone Name	Status Date	Status	Fluid Type	Job					Prod Method
NIOBRARA	6/5/2015	PR	Water	DRILLING/COMPLETION - ORIGINAL, 3/18/2007...					Flowing
NIOBRARA	11/29/2016	SI							
CODELL	4/20/2007	PR							
CODELL	3/7/2010	PR							
Perforation Data									
Linked Zone		Bnch/Stg	Entered Shot Total	Top (ftKB)		Btm (ftKB)		Date	
NIOBRARA, ORIGINAL HOLE			64	6,662.00		6,678.00		4/18/2007	
NIOBRARA, ORIGINAL HOLE			64	6,760.00		6,776.00		4/18/2007	
CODELL, ORIGINAL HOLE			56	6,949.00		6,963.00		3/27/2007	
Stimulation Intervals									
Zone				Start Date		Top (ftKB)		Btm (ftKB)	
NIOBRARA, ORIGINAL HOLE				4/18/2007		6,662.0		6,776.0	
CODELL, ORIGINAL HOLE				4/18/2007		6,949.0		6,963.0	
Other In Hole									
Run Date		Des				OD (in)	Top (ftKB)	Btm (ftKB)	
Logs									
Date		Type				Top, MD (ftKB)		Btm, MD (ftKB)	
3/21/2007		COMPENSATED DENSITY				2,000.0		7,104.0	
3/21/2007		INDUCTION				476.0		7,124.0	
3/27/2007		CEMENT BOND				1,960.0		7,016.0	
6/14/2016		GYRO				0.0		6,850.0	
Plug Back Total Depths									
Date		Type		Com				Depth (ftKB)	
3/27/2007		FILL		DEPTH LOGGER ON CBL				7,018.0	
7/20/2007		FILL		CIRC. THRU REMAINS OF PLUG, CLEAN OUT				7,088.0	