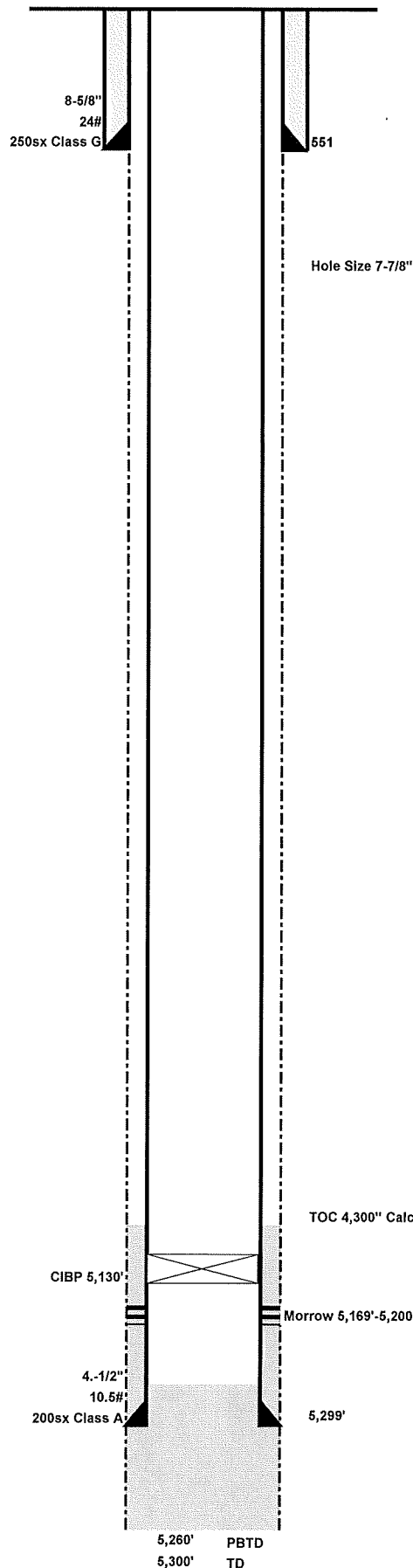


Citation Oil & Gas Corp.

Lease:	Arapahoe Unit		Well No.	103 24-6
API No.	05-017-6790		Status	PA
Location:	804' FSL, 1380' FWL SE SW Sec 6 T15S R41W			
County:	Cheyenne	State:	CO	
Field:	Arapahoe			
TD	5,300'	GL	3936'	Spud Date: 3/14/88
PBTD	5,260'	KB	3944'	Comp Date: 3/21/88
Current Perfs/OH:	5,169'-5,200'		Current Zone:	Morrow



Unit Make:	Unit Size:
Unit S/N:	Unit Rotation:
SPM:	Stroke Length:
Prime Mover:	Unit Sheave:
Motor S/N:	Motor Sheave:
	Motor RPM:

	Size	Grade / Wt	Depth	Cement
Surface	8-5/8"	24#	551'	250sx Class G
Production	4.-1/2"	10.5#	5,299'	200sx Class A
Liner				
Liner				
Liner				

[illegible][illegible]

<p>PREPARED BY:</p> <p style="font-size: 2em; font-weight: bold; margin-left: 100px;">LL</p>	<p>UPDATED:</p> <p style="font-size: 2em; font-weight: bold; margin-left: 100px;">10/30/2018</p>
---	---