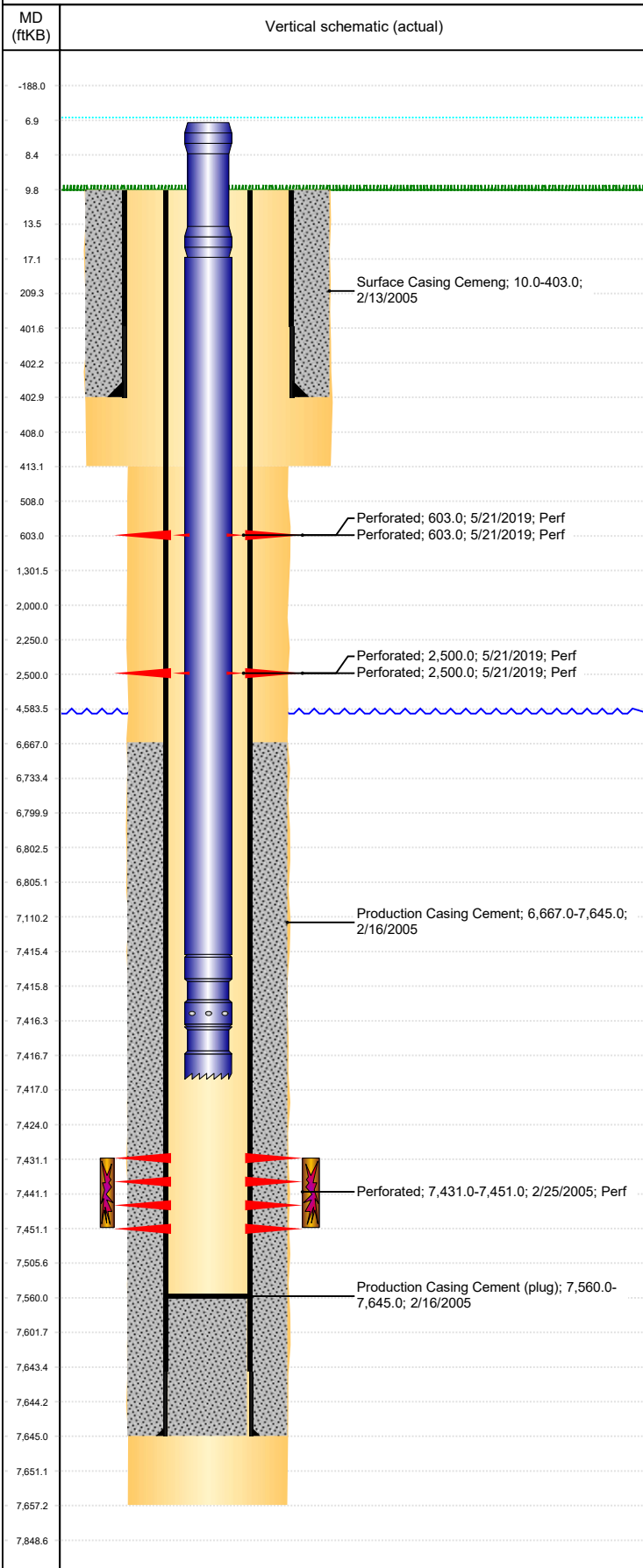


Well Name: BOOTH N25-12

VERTICAL, ORIGINAL HOLE, 5/29/2019 4:38:32 PM



Well Header									
API 05-123-22681		Business Unit DJ BASIN			District 15		Well Config VERTICAL		
KB - GL / MSL (ft... 10.00		Spud Date 2/13/2005		P & A Date		Well Production Status SI			SoRT No
Comment									
Surface Location (Congressional)									
Qtr 3 NW	Qtr 4 SW	Section 25	Twnshp 5	Twنش... N	Range 67	Rng E/... W	Actual Latitude (°) 40.36834340	Actual Longitude (°) -104.84916853	
Wellbore Sections									
Section Des			Size (in)			Act Top, MD (ftKB)		Act Btm, MD (ftKB)	
SURFACE			12 1/4			10		413	
PRODUCTION			7 7/8			413		7,657	
Casing Strings									
Csg Des			Run Date		OD (in)	Wt/Len (lb/ft)	Grade	Top, MD (ftKB)	MD (ftKB)
Surface			2/13/2005		8 5/8	24.00	?	10.0	403.0
Production			2/16/2005		4 1/2	11.60	M-80	10.0	7,645.0
Cement									
Des					Start Date		Top (ftKB)		Btm (ftKB)
Surface Casing Cemeng					2/13/2005		10.0		403.0
Production Casing Cement					2/16/2005		6,667.0		7,645.0
Zone Statuses									
Zone Name	Status Date	Status	Fluid Type	Job				Prod Method	
CODELL	1/4/2012	PR		RE-FRAC, 12/12/2011 06:00					
CODELL	10/27/2016	SI							
Perforation Data									
Linked Zone			Bnch/Stg	Entered Shot Total	Top (ftKB)		Btm (ftKB)		Date
					603.00		603.00		5/21/2019
					603.00		603.00		5/21/2019
					2,500.00		2,500.00		5/21/2019
					2,500.00		2,500.00		5/21/2019
CODELL, ORIGINAL HOLE				80	7,431.00		7,451.00		2/25/2005
Stimulation Intervals									
Zone				Start Date		Top (ftKB)		Btm (ftKB)	
CODELL, ORIGINAL HOLE				3/14/2005		7,431.0		7,451.0	
CODELL, ORIGINAL HOLE				1/3/2012		7,431.0		7,451.0	
				1/3/2012		7,431.0		6,805.0	
Other In Hole									
Run Date		Des				OD (in)	Top (ftKB)	Btm (ftKB)	
Logs									
Date		Type				Top, MD (ftKB)		Btm, MD (ftKB)	
2/17/2005		COMPENSATED DENSITY				3,000.0		7,625.0	
2/17/2005		INDUCTION				403.0		7,645.0	
2/21/2005		CBL/CCL/GR				6,500.0		7,560.0	
Plug Back Total Depths									
Date		Type		Com				Depth (ftKB)	
2/17/2005		FLOAT COLLAR		FLOAT COLLAR				7,635.0	
2/21/2005		CEMENT PLUG		DEPTH LOGGER				7,560.0	