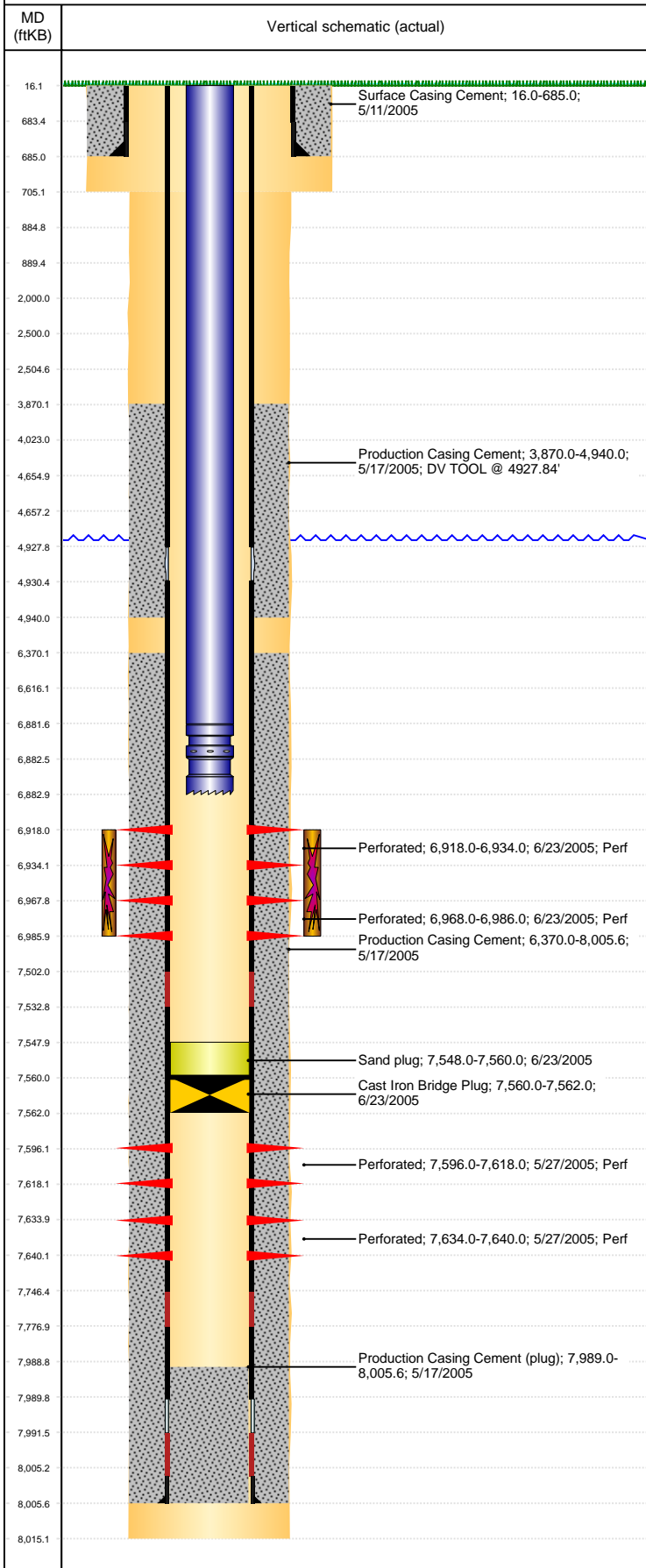


Well Name: HELMS H12-14D

VERTICAL, ORIGINAL HOLE, 5/28/2019 4:07:07 PM



Well Header									
API 05-123-22903		Business Unit DJ BASIN			District 15		Well Config VERTICAL		
KB - GL / MSL (ft... 16.00		Spud Date 5/11/2005		P & A Date		Well Production Status SI			SoRT No
Comment DV TOOL @ 4928', DRILLED OUT 5/26/05									
WELLHEAD IS 5000# WP, 3000# BACKSIDE VALVE RATING									
Surface Location (Congressional)									
Qtr 3 SE	Qtr 4 SW	Section 12	Twnshp 3	Twnsh... N	Range 65	Rng E... W	Actual Latitude (°) 40.23357393	Actual Longitude (°) -104.61379916	
Wellbore Sections									
Section Des			Size (in)			Act Top, MD (ftKB)		Act Btm, MD (ftKB)	
SURFACE			12 1/4			16		705	
PRODUCTION			7 7/8			705		8,015	
Casing Strings									
Csg Des		Run Date		OD (in)	Wt/Len (lb/ft)	Grade	Top, MD (ftKB)	MD (ftKB)	
Surface		5/11/2005		8 5/8	24.00	J-55	16.0	685.0	
Production		5/16/2005		4 1/2	11.60	M-80	16.0	8,005.6	
Cement									
Des				Start Date		Top (ftKB)		Btm (ftKB)	
Surface Casing Cement				5/11/2005		16.0		685.0	
Production Casing Cement				5/17/2005		3,870.0		4,940.0	
Production Casing Cement				5/17/2005		6,370.0		8,005.6	
Zone Statuses									
Zone Name	Status Date	Status	Fluid Type	Job				Prod Method	
J SAND	7/7/2005	PR	Oil					Flowing	
J SAND	6/1/2010	PR	Water					Flowing	
NIOBRARA	7/7/2005	PR	Oil					Flowing	
NIOBRARA	6/1/2010	PR	Water					Flowing	
Perforation Data									
Linked Zone		Bnch/Stg	Entered Shot Total	Top (ftKB)		Btm (ftKB)		Date	
NIOBRARA, ORIGINAL HOLE		A	96	6,918.00		6,934.00		6/23/2005	
NIOBRARA, ORIGINAL HOLE		B	108	6,968.00		6,986.00		6/23/2005	
J SAND, ORIGINAL HOLE			88	7,596.00		7,618.00		5/27/2005	
J SAND, ORIGINAL HOLE			24	7,634.00		7,640.00		5/27/2005	
Stimulation Intervals									
Zone			Start Date			Top (ftKB)		Btm (ftKB)	
NIOBRARA, ORIGINAL HOLE			7/6/2005			6,918.0		6,986.0	
Other In Hole									
Run Date		Des				OD (in)	Top (ftKB)	Btm (ftKB)	
6/23/2005		Cast Iron Bridge Plug				4	7,560.0	7,562.0	
6/23/2005		Sand plug				4	7,548.0	7,560.0	
Logs									
Date		Type				Top, MD (ftKB)		Btm, MD (ftKB)	
5/16/2005		COMPENSATED DENSITY				3,500.0		7,994.0	
5/16/2005		INDUCTION				685.0		8,014.0	
5/27/2005		CBL/CCL/GR				3,650.0		7,964.0	
8/24/2018		GYRO				16.0		6,800.0	
Plug Back Total Depths									
Date		Type		Com				Depth (ftKB)	
5/27/2005		FILL		DEPTH LOGGER ON CBL				7,967.0	
6/23/2005		PLUG		CIBP W/ 2 SX SAND OVER J SAND				7,560.0	